

Sta. 0+00 - Const.
Standard Type B
Manhole (D = 5')
1 - 24" Stub (W)
and Pipe Plug.
Top Elev. = 141.30
.41

Sta. 0+23.4
Install 8" Cleanout Riser
Assembly with 8" x 4"
Single Wye Fitting.
1 - 4" Stub (W)
Top Elev. = 142.40
.22



SCALE: 1" = 40' HORIZONTAL
1" = 5' VERTICAL

● = IRON

GENERAL NOTE:

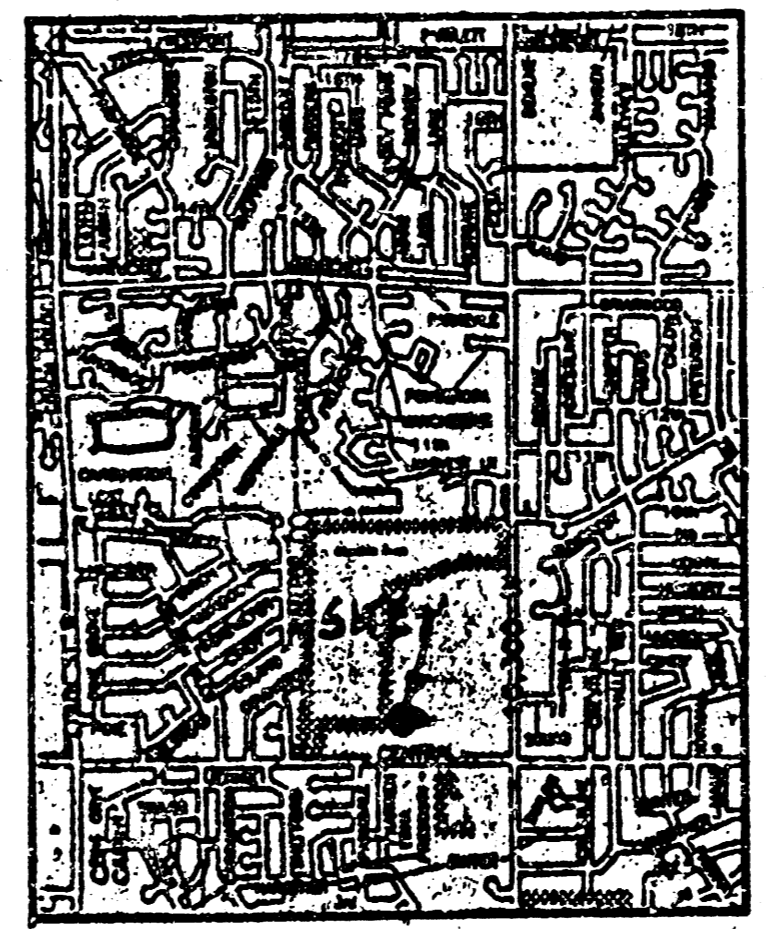
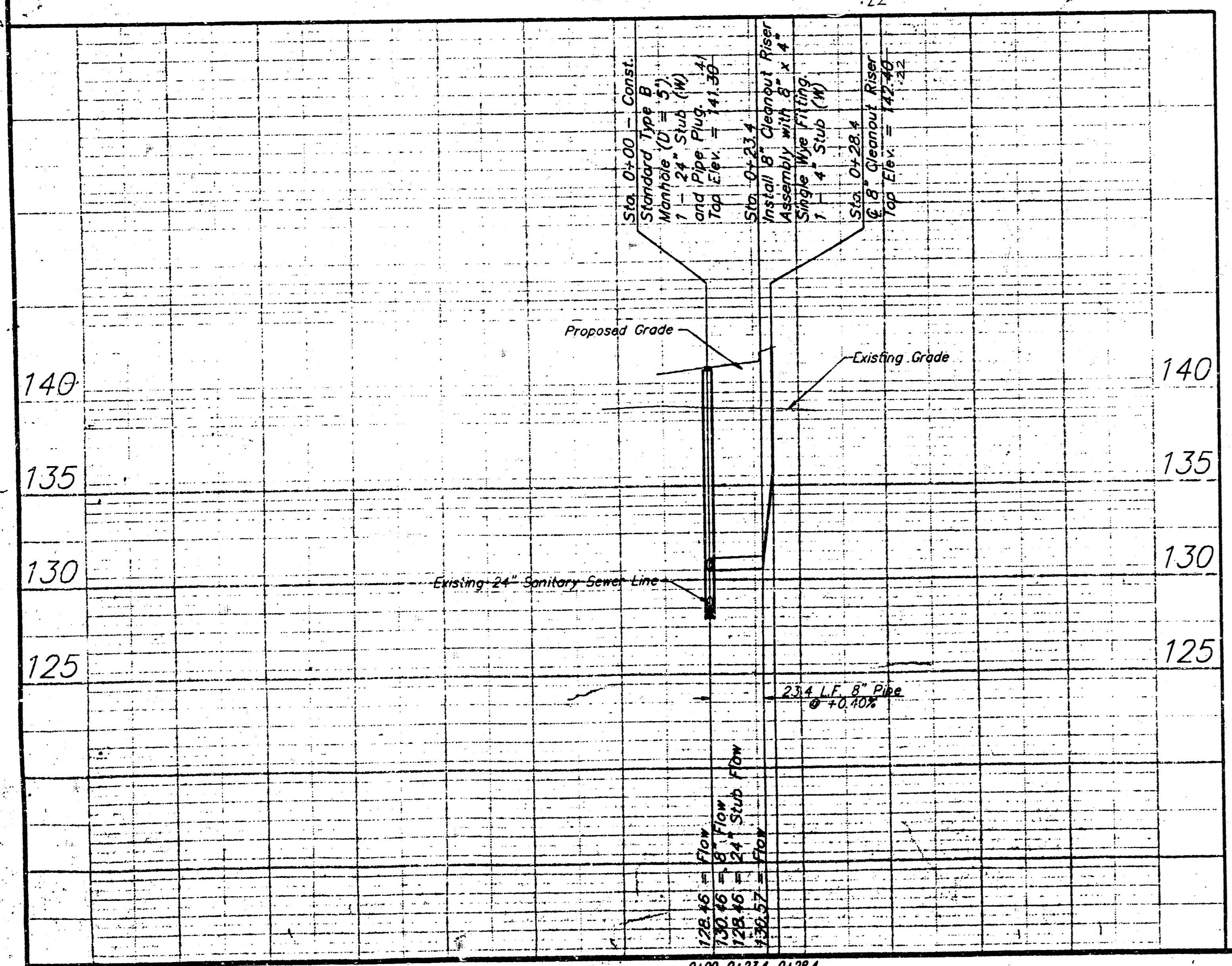
- The Contractor shall be responsible for maintaining continuous flow of sewage through construction. Contractor's proposed method for maintaining sewage flow shall be approved by the Engineer. Cost of maintaining flow of sewage through construction will not be paid for directly and this cost shall be considered as subsidiary to the other pay items of work.

City Disc Located in island at
Northeast Corner of Maize Road
and Central.

Elevation = 146.00 (City Datum)

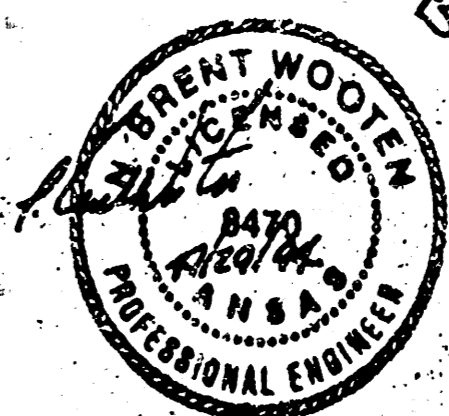
□ Cut in Top of Curb on West
Side of Maize Road Between Lots
2 & 3, Block 1, Teh-N-Huh
Village.

Elevation = 151.29 (City Datum)



LOCATION MAP

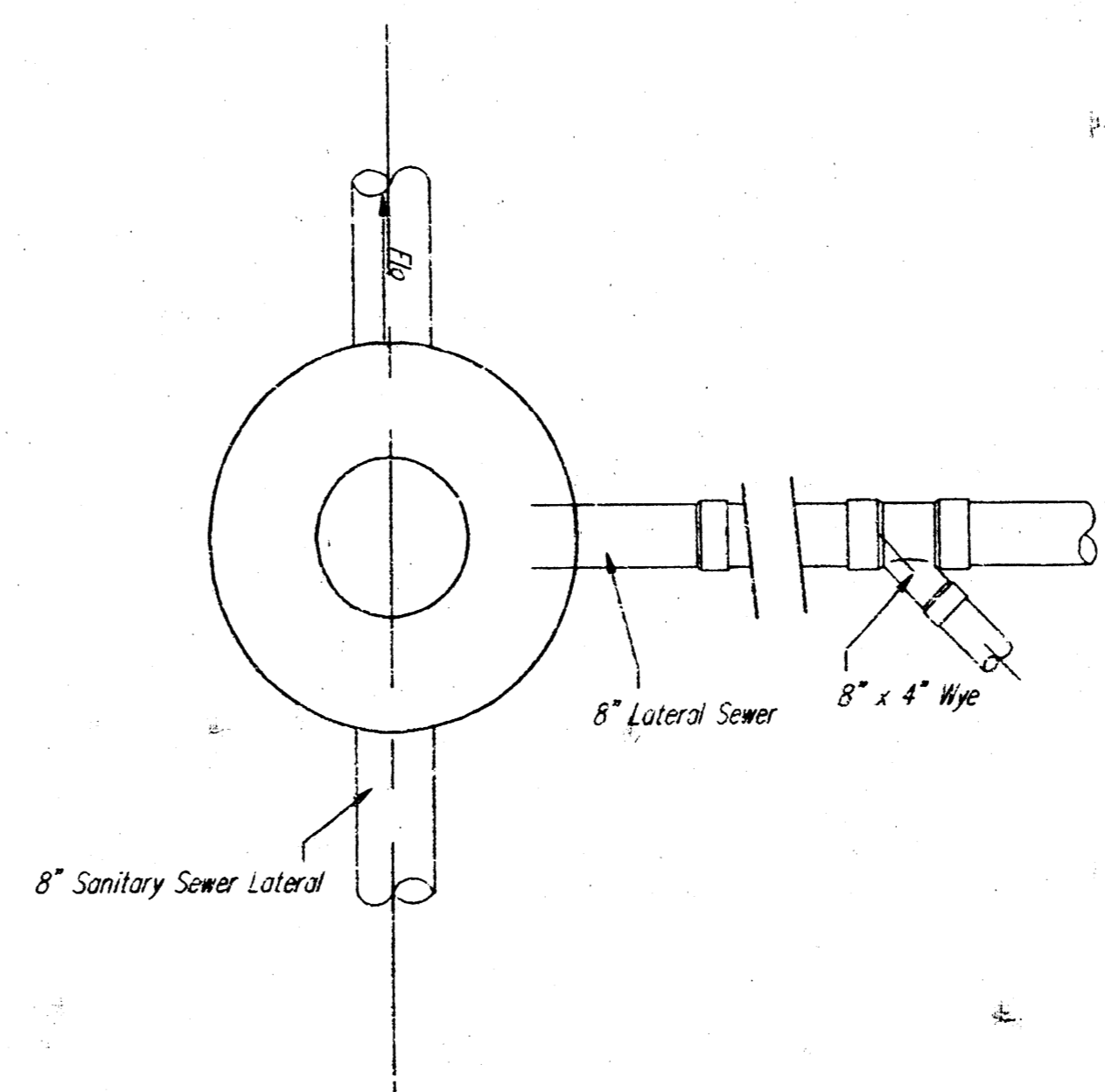
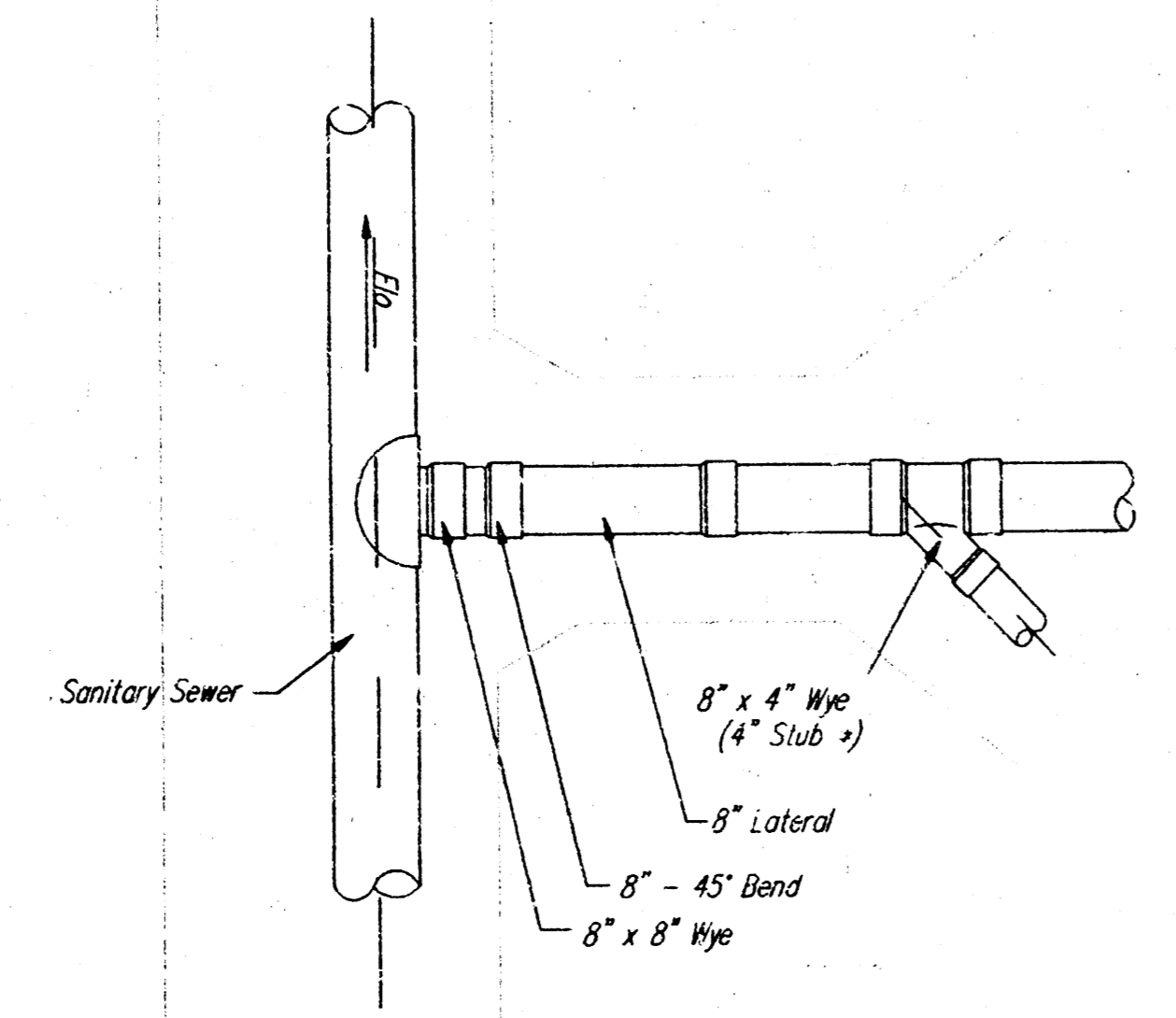
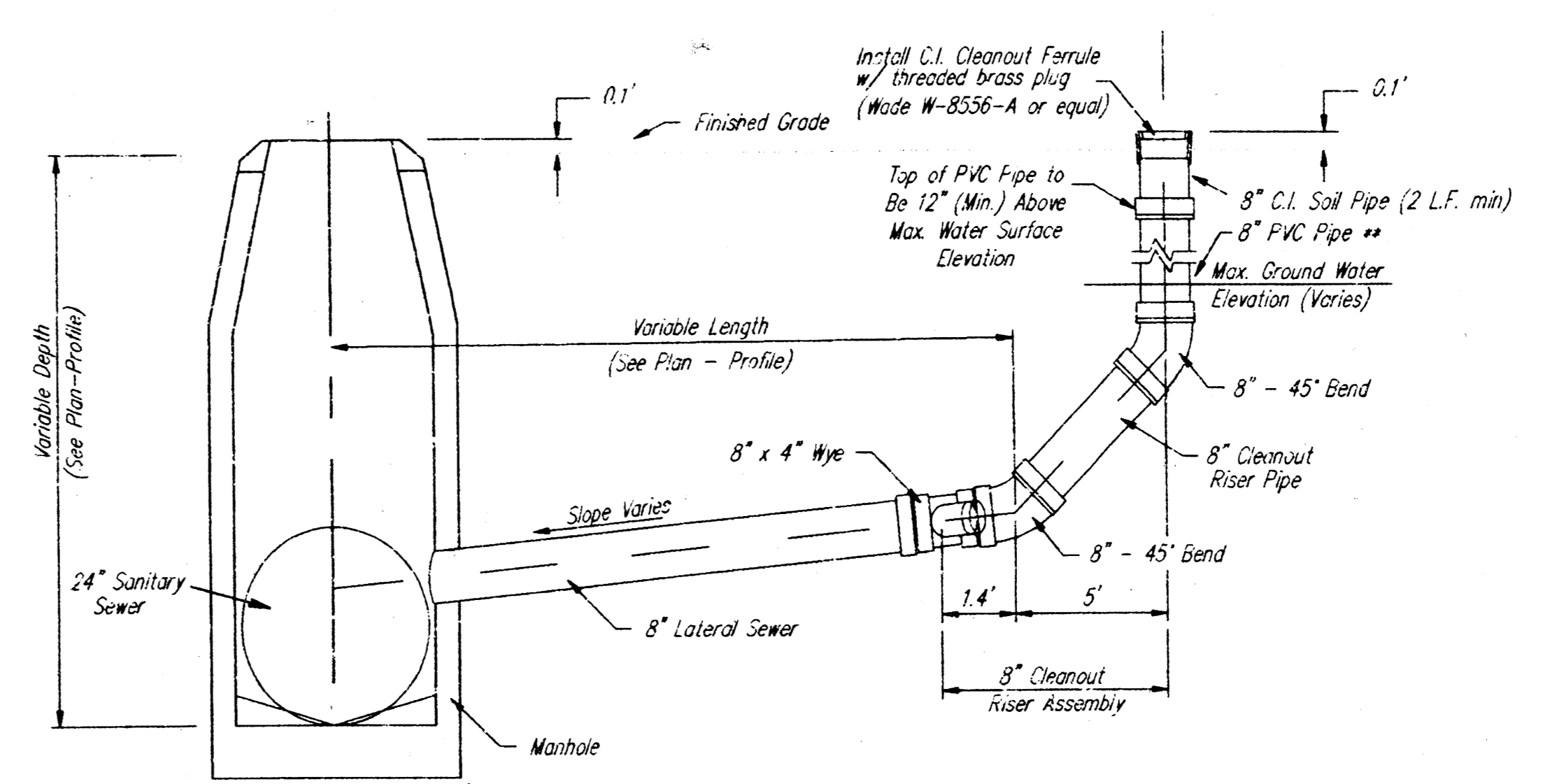
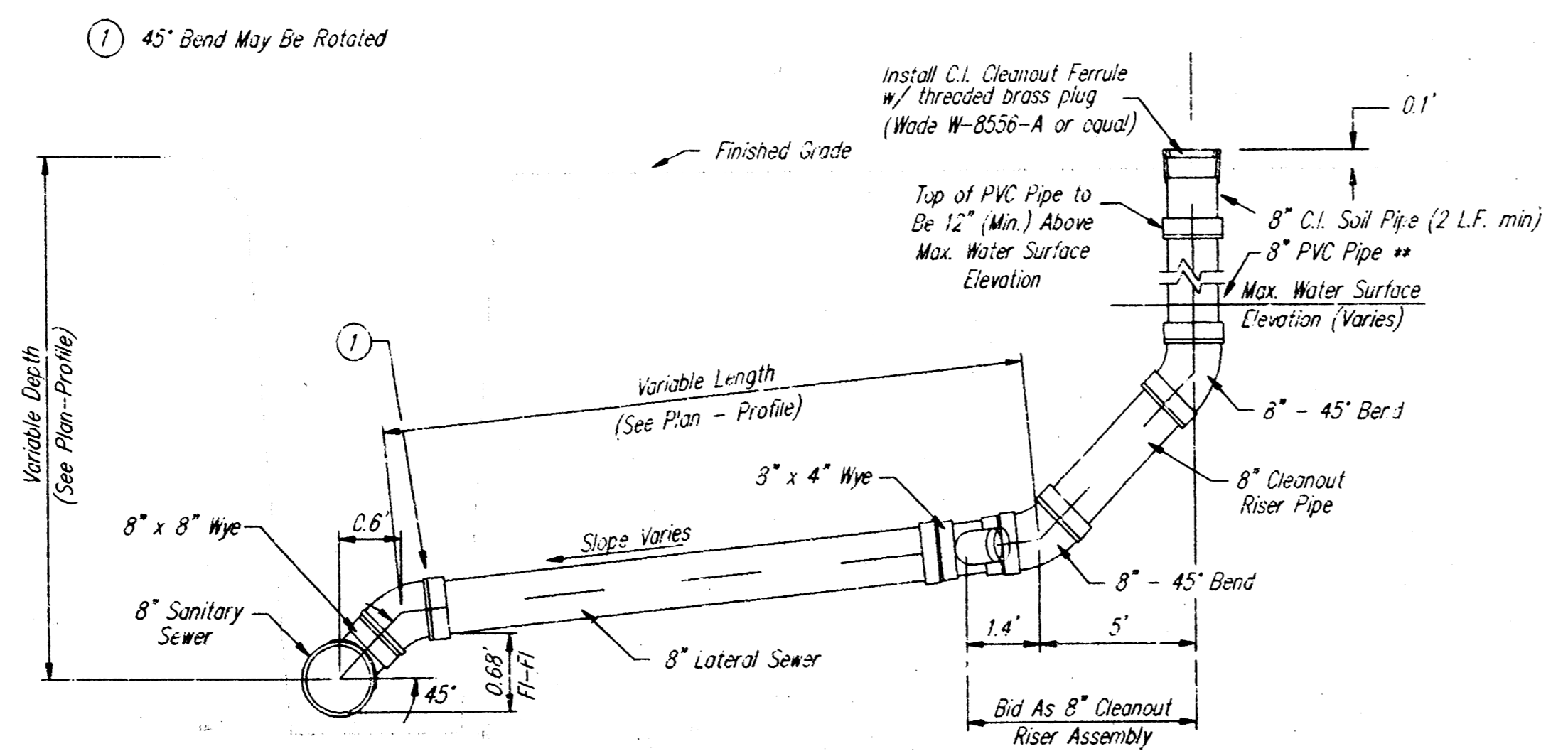
Booked 1-19-95
SKB
From As Bldgs



As Built 9-9-94

TIMBER GROVE LAKES COMMERCIAL ADDITION SANITARY SEWER			
BAUGHMAN COMPANY P.A. ENGINEERING, SURVEYING & PLANNING 316-202-7271 315 E. BLUE, WICHITA, KANSAS 67201			
PROJECT NUMBER 483 PPS (607861)			
DESIGN NGW	DRAWN DMV	APPROVED DATE 7-27-94	SCALE NOTED
SHEET 1			OF 2

94-05-1684



* 4" Branch To Serve as 4" Stub. Temporary Plug Until Service Connection is Required.

** 8" Lateral to be Air-Tested up to the Top of PVC Pipe, per Standard Specifications.

8" CLEANOUT RISER ASSEMBLY DETAIL
W/ WYE CONNECTION

8" CLEANOUT RISER ASSEMBLY DETAIL
W/ MANHOLE CONNECTION

CLEANOUT RISER ASSEMBLY					
BAUGHMAN COMPANY P. A. ENGINEERING & SURVEYING 316/262-7271 • 315 ELLIS • WICHITA, KANSAS 67211					REV.
PROJECT NUMBER					SHEET
DESIGN	DRAWN	APPROVED	DATE	SCALE	2
TCR	KLK		7-15-92	NONE	2