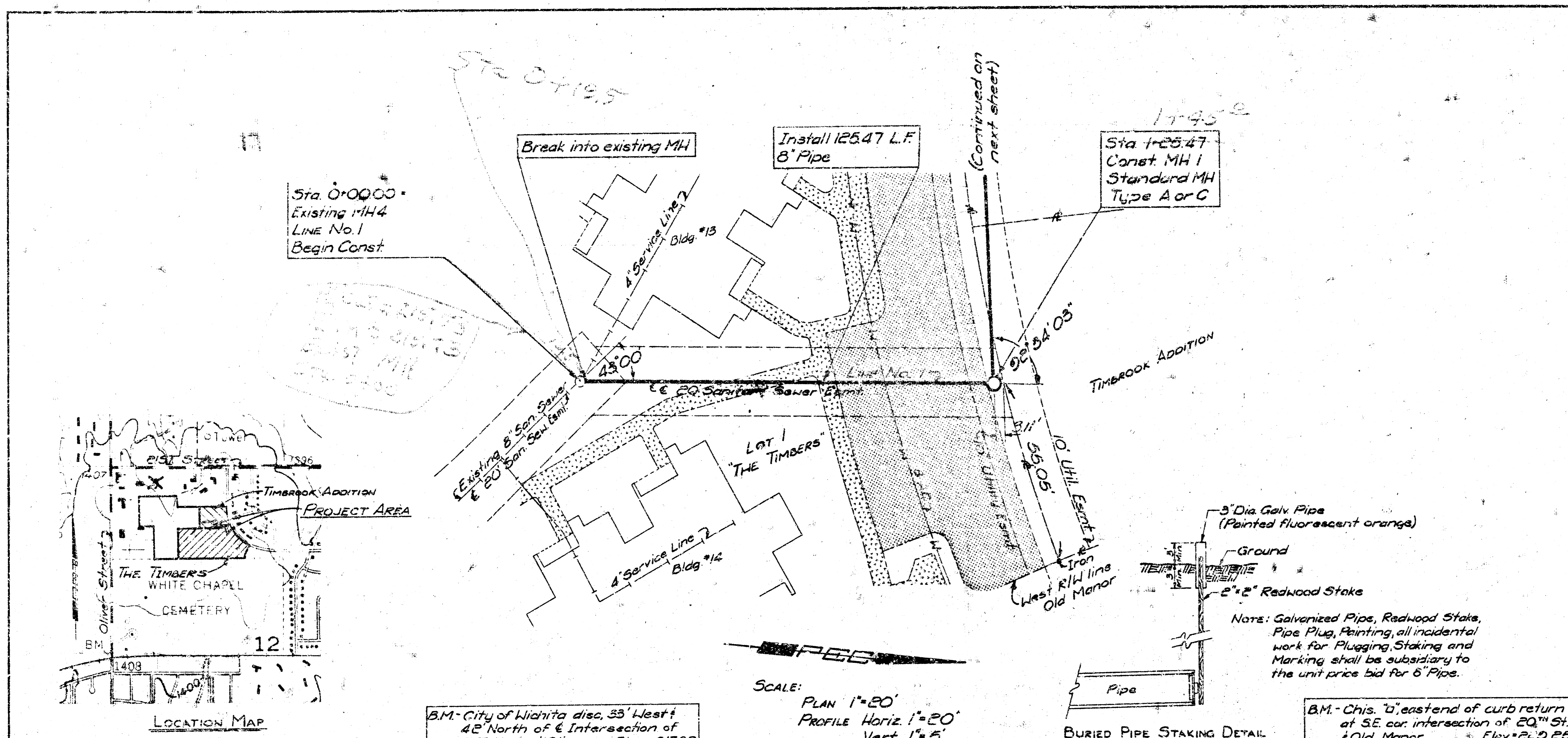


PLAN	DATE	BY	CHKD
10/1/78	10/1/78	RFL	KDE
10/1/78	10/1/78	RFL	KDE
10/1/78	10/1/78	RFL	KDE

PROFILE	DATE	BY	CHKD
10/1/78	10/1/78	RFL	KDE
10/1/78	10/1/78	RFL	KDE
10/1/78	10/1/78	RFL	KDE

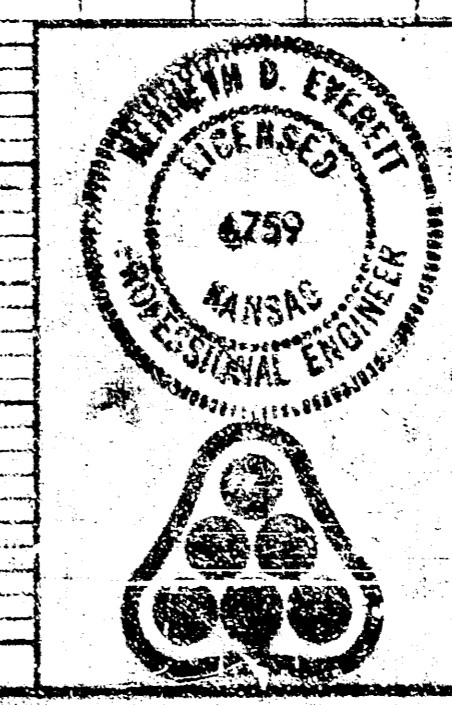
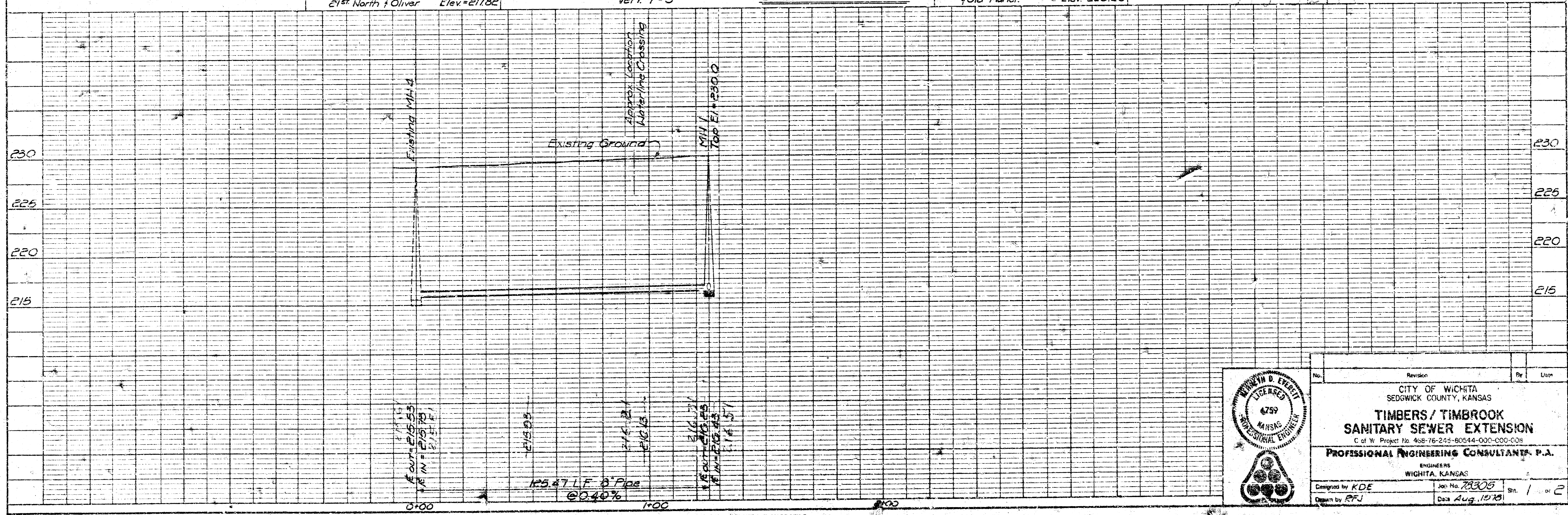


NOTES

- All construction and materials to comply with standard City of Wichita Specifications.
 - Sewer line to be inspected by the Dept of Public Works Inspection.
 - Sidewalks, drives, and parking to be constructed under separate contract after completion of sanitary sewer construction. Sidewalk [] Bituminous parking and drive []
 - The contractor will be required to notify each of the following utility companies prior to the beginning of construction and should request that any existing lines be flagged:
- City of Wichita Water Dept.
455 N. Main St
268-4657 Benny Gegen
- The contractor is responsible for supporting and protecting the 8" A.C. Waterline during the period of time it is uncovered and for properly backfilling it in accordance with standard City of Wichita Specifications.
 - The existing 8" Sanitary Sewer and MH4 were constructed under City of Wichita Sanitary Sewer Project No. DBKW 707063.
 - All excavation shall be sand backfilled and flushed per City of Wichita Specifications.

NOTE TO CONTRACTOR
This project will be constructed in accordance with the specifications of the City of Wichita. The contractor shall be responsible for obtaining all necessary permits and for the safety of the public during construction. The contractor shall be responsible for the protection of existing utilities and for the proper disposal of all waste materials.

9-20-78
APPROVED AS NOTED
BY CITY ENGINEER
Sanitary Sewer
Storm Sewer
Drainage Approaches



No.	Revision	By	Date

CITY OF WICHITA
SEGWICK COUNTY, KANSAS

**TIMBERS / TIMBROOK
SANITARY SEWER EXTENSION**

C of W. Project No. 468-76-245-80544-000-C00-C08

PROFESSIONAL ENGINEERING CONSULTANTS, P.A.

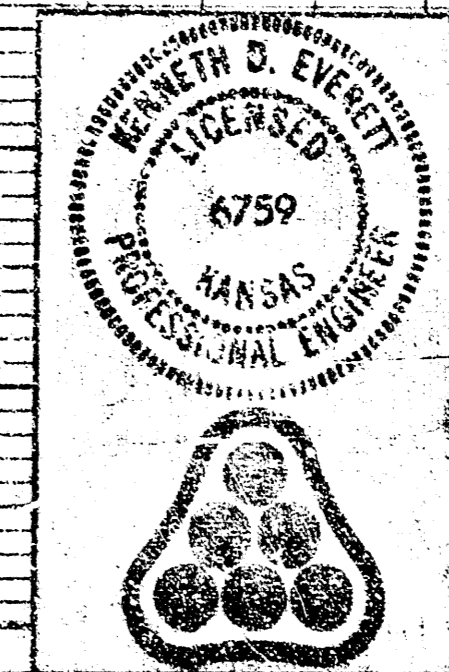
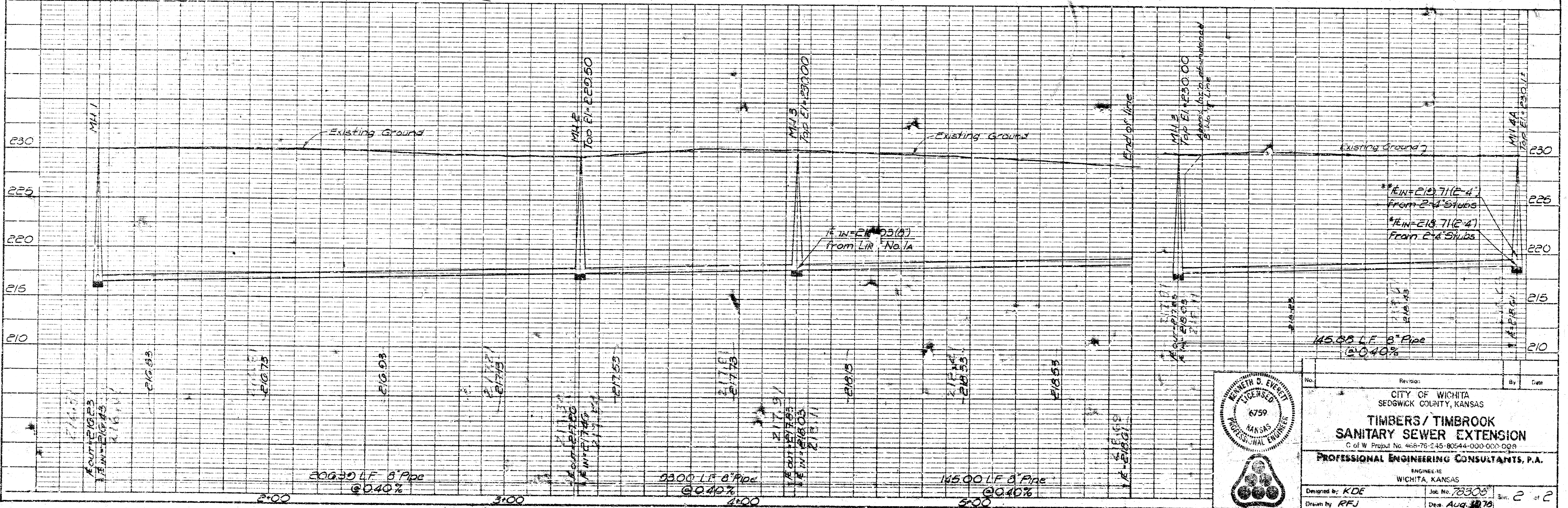
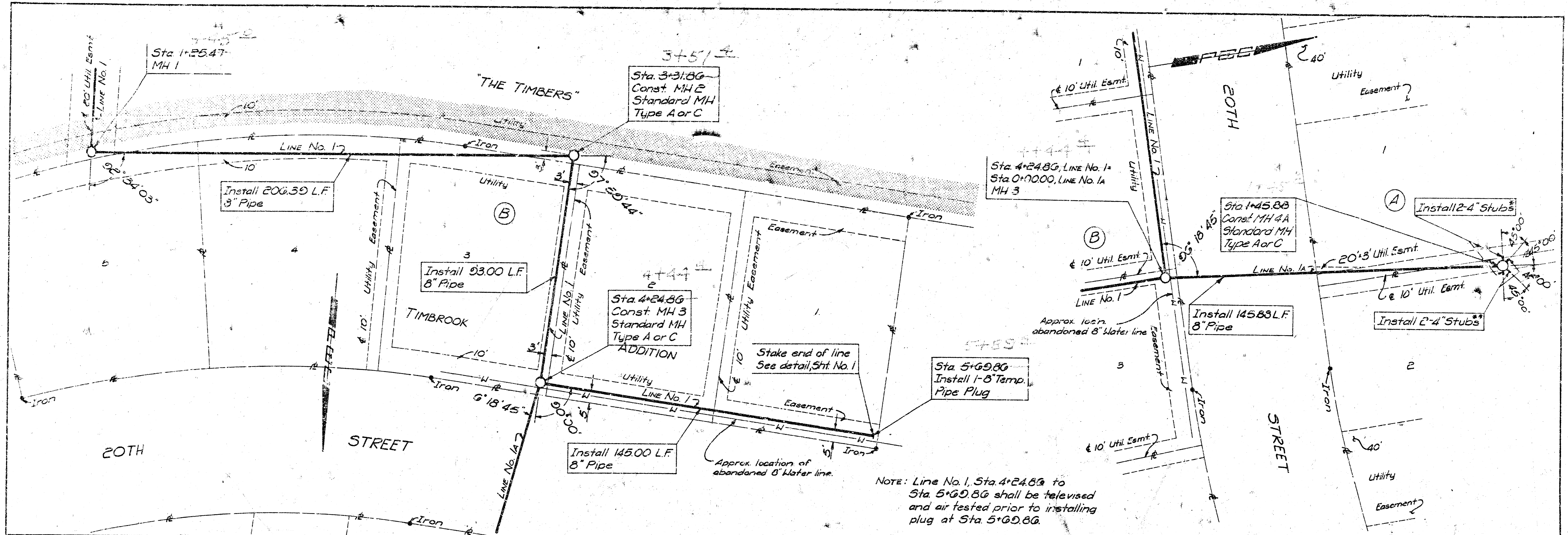
ENGINEERS
WICHITA, KANSAS

Designed by KDE Job No. 78306
Drawn by RFL Date Aug. 1978

Sht. 1 of 2

DATE	
SCALE	
PROJECT	
CLIENT	
DESIGNER	
CHECKER	
DATE	

PROJECT	
DATE	
SCALE	
PROJECT	
CLIENT	
DESIGNER	
CHECKER	
DATE	



No.	Rev.	By	Date
CITY OF WICHITA SEDGWICK COUNTY, KANSAS			
TIMBERS/TIMBROOK SANITARY SEWER EXTENSION			
C of W Project No. 468-76-245-80544-000-000-009			
PROFESSIONAL ENGINEERING CONSULTANTS, P.A.			
ENGINEERS WICHITA, KANSAS			
Designed by: KDE	Job No. 78303	Sht. 2 of 2	
Drawn by: RFJ	Date: Aug. 27, 78		

18 2 4 2