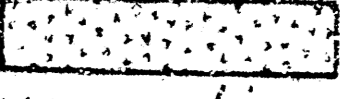



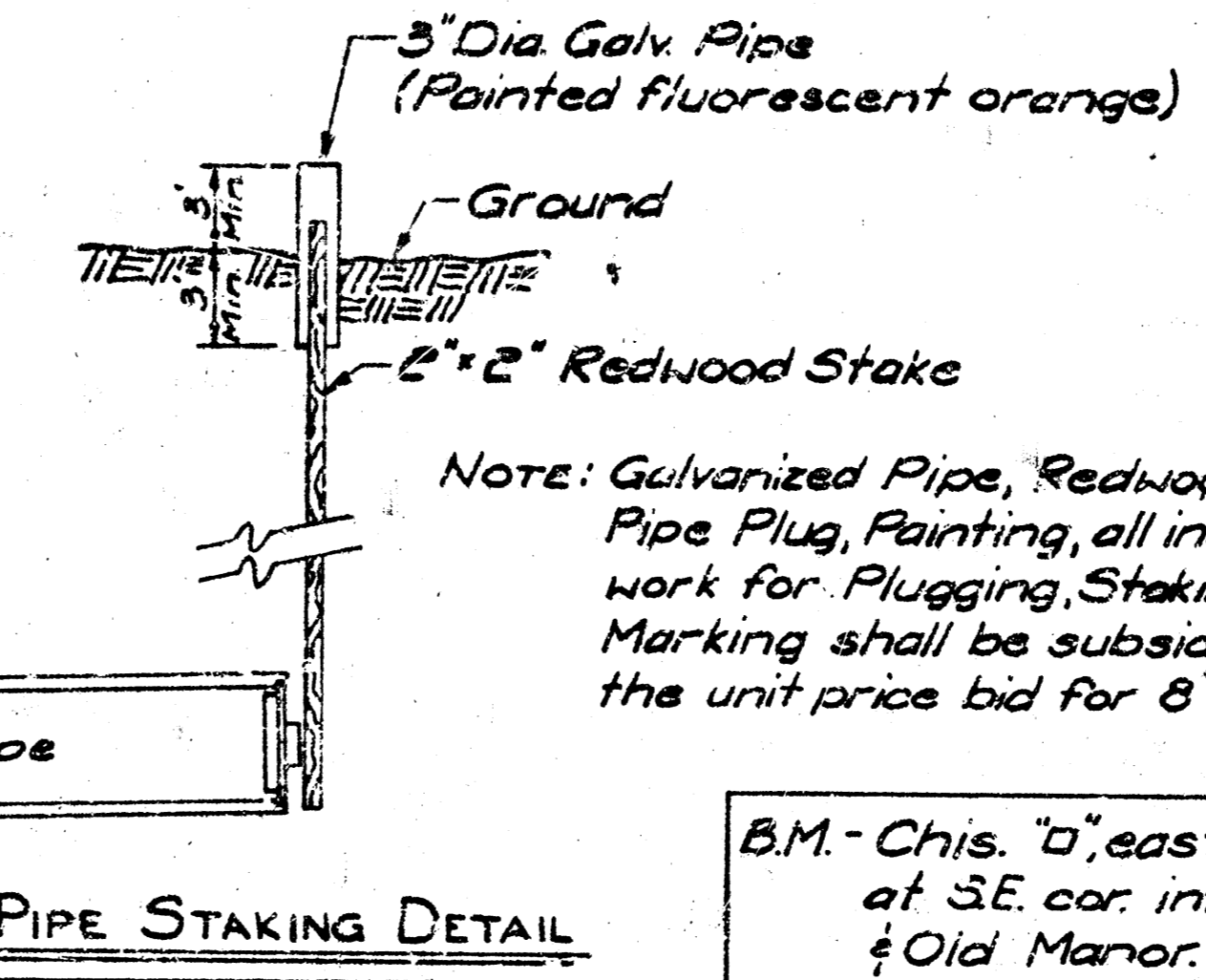
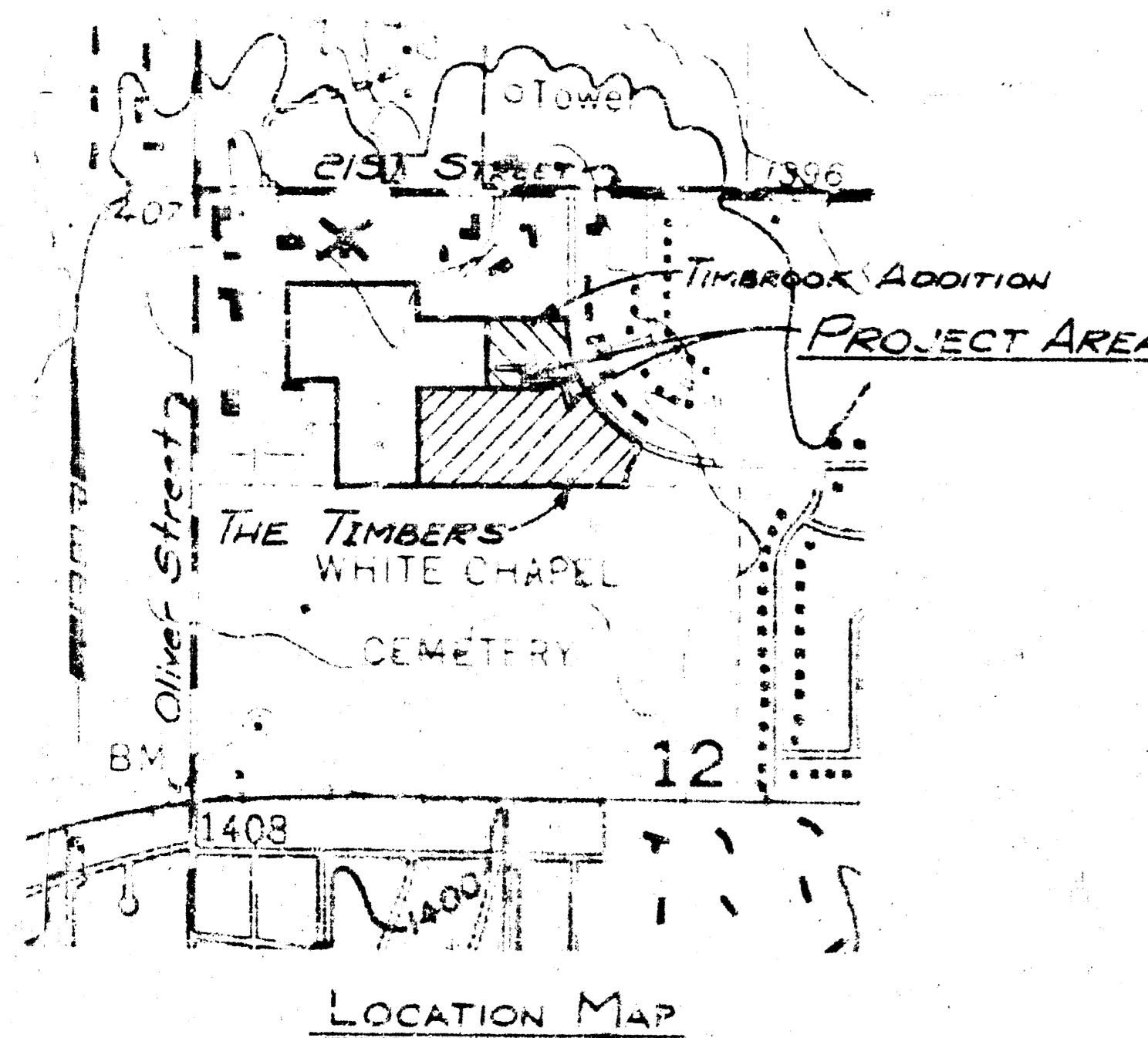
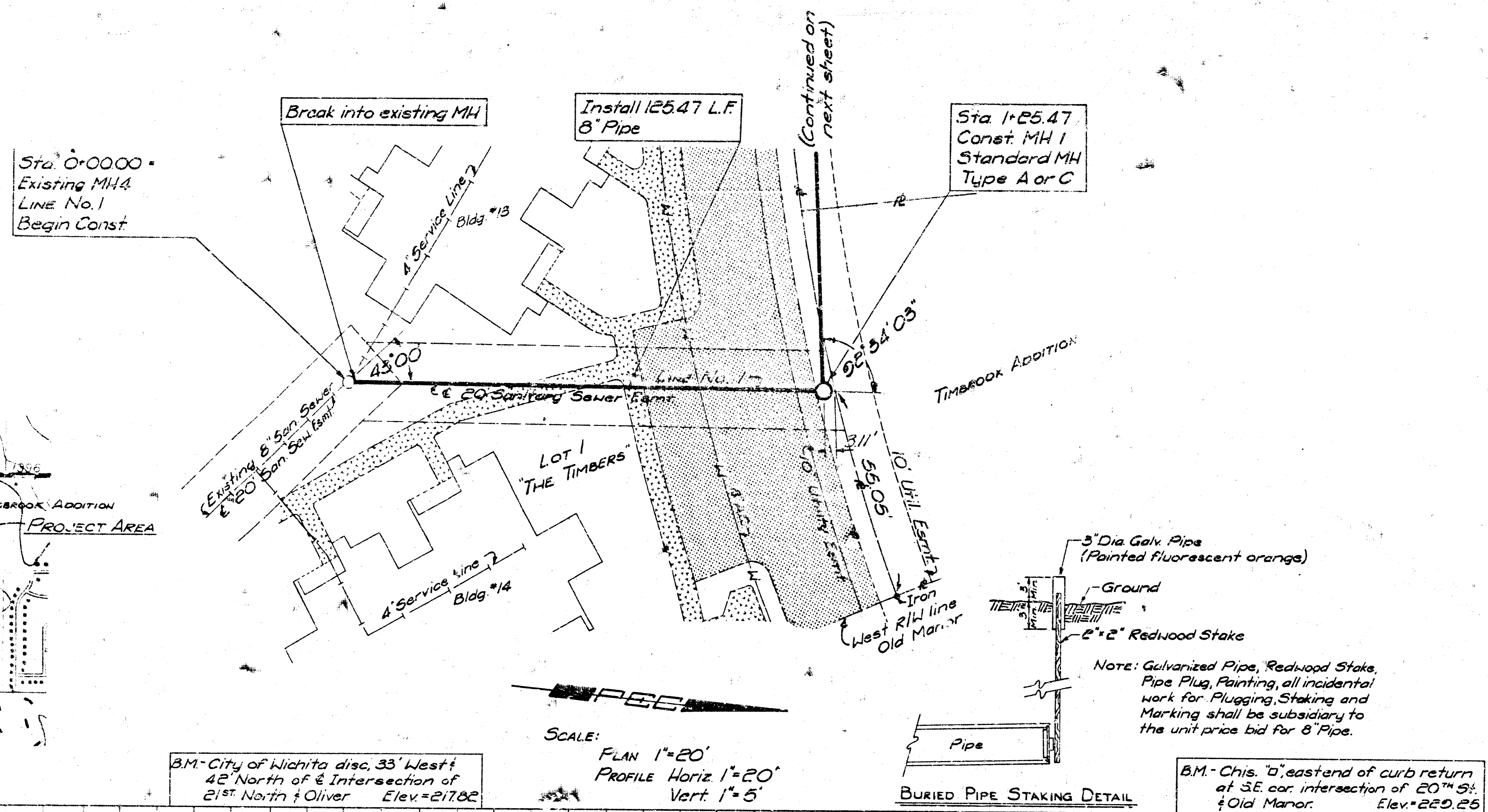
NOTES

1. All construction and materials to comply with standard City of Wichita Specifications.
2. Sewer line to be inspected by the Dept of Public Works Inspection.
3. Sidewalks, drives, and parking to be constructed under separate contract after completion of sanitary sewer construction.
Sidewalk 
Bituminous parking and drive 
4. The contractor will be required to notify each of the following utility companies prior to the beginning of construction and should request that any existing lines be flagged:

City of Wichita Water Dept.
455 N. Main St.
268-4557 Benny Gegen

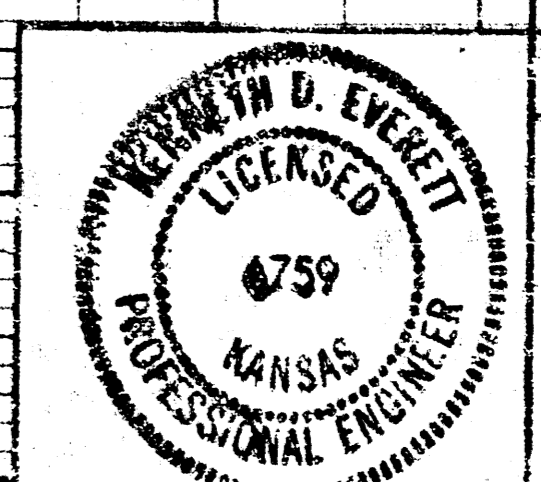
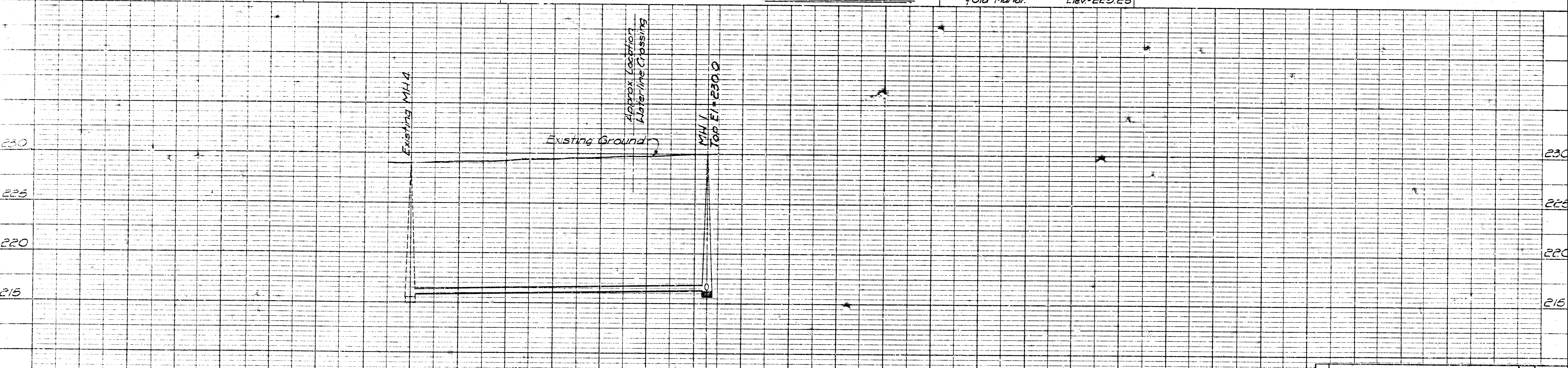
5. The contractor is responsible for supporting and protecting the 8" A.C. Waterline during the period of time it is uncovered and for properly backfilling it in accordance with standard City of Wichita Specifications.
6. The existing 8" Sanitary Sewer and MH4 were constructed under City of Wichita Sanitary Sewer Project No. DBK/W 7070G3.
7. All excavation shall be sand backfilled and flushed per City of Wichita Specifications.

APPROVED AS SHOWN
9-23-76
CITY ENGINEER
Sewer Dept.
Sewer Section
Sewer Division



B.M. - City of Wichita disc, 33' West & 42' North of E Intersection of 21st North & Oliver Elev. = 217.82

B.M. - Chis. "d", east end of curb return at SE cor. intersection of 20th St. & Old Manor. Elev. = 220.25



No.	Revision	By	Date

CITY OF WICHITA
 SEDGWICK COUNTY, KANSAS
**TIMBERS / TIMBROOK
 SANITARY SEWER EXTENSION**
 C of W Project No. 468-76-245-80544-000-000-006

