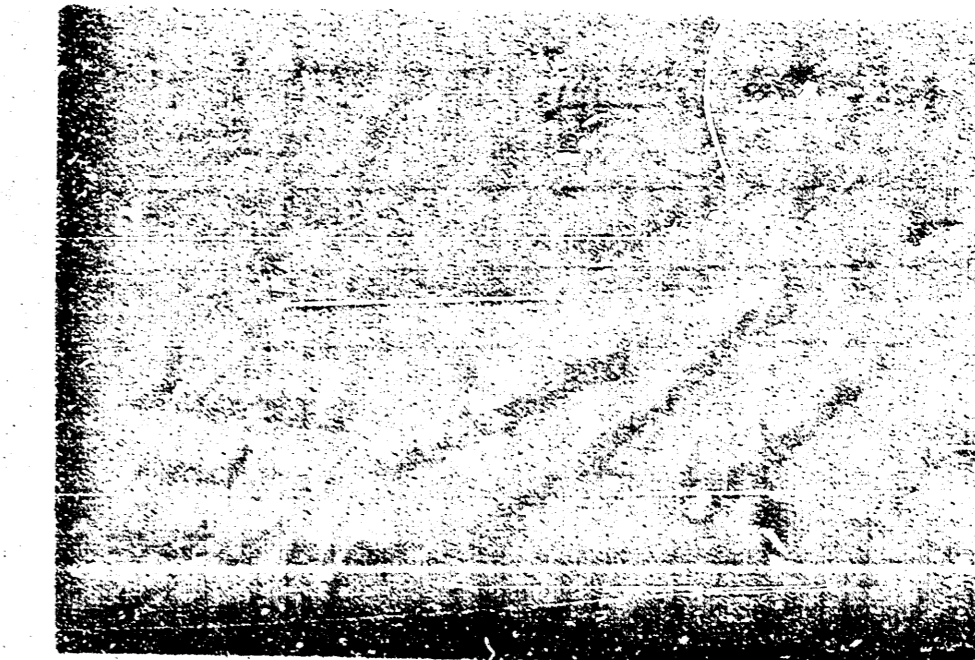


# SANITARY SEWER RELOCATION

## LOT 2, BLOCK 1, TORLINE ADDITION

### PRIVATE PROJECT NUMBER 1567 PPS (607861)



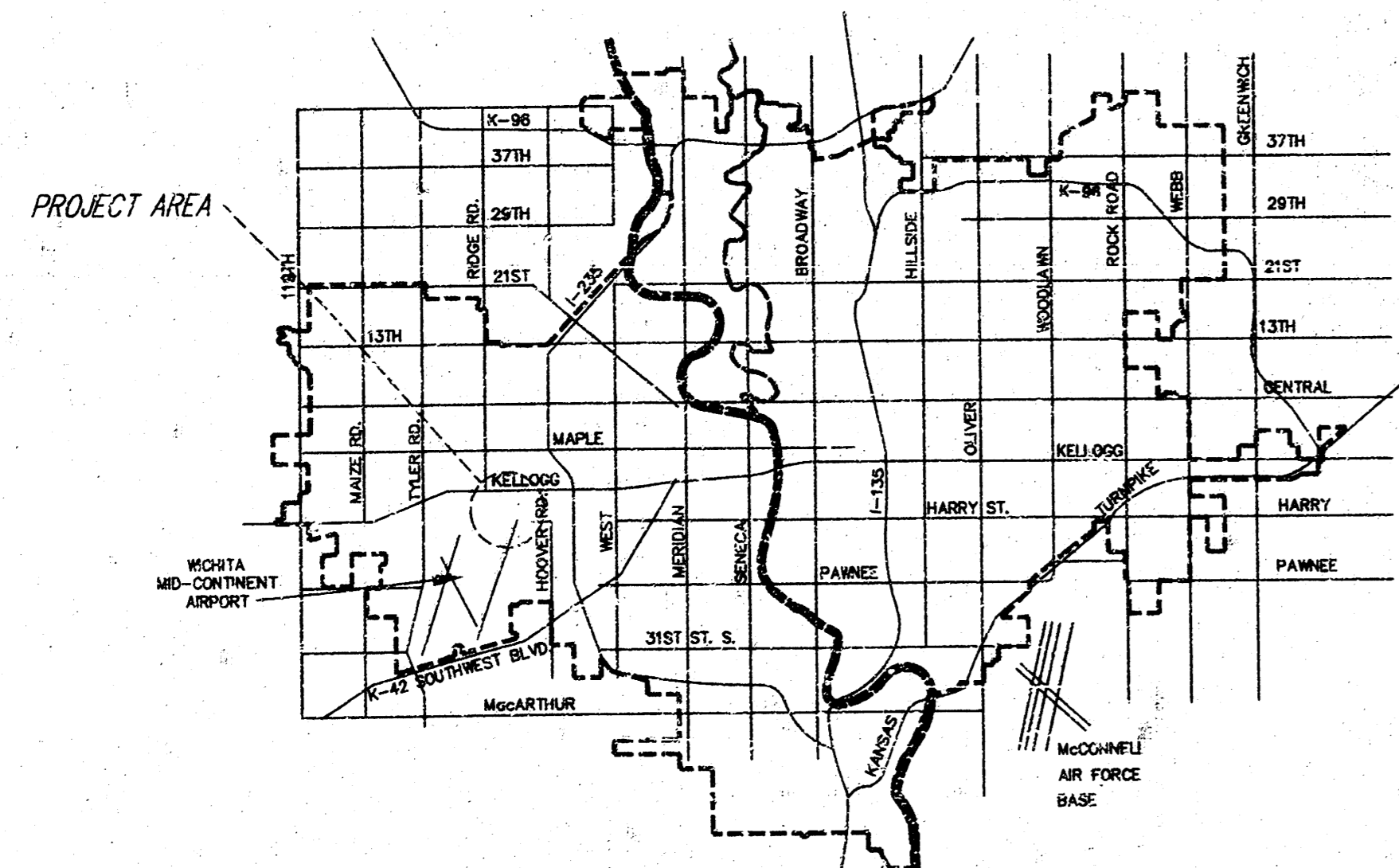
#### GENERAL NOTES

- Contractor will be required to provide a minimum advance notice of forty-eight (48) hours to utility companies prior to starting any excavation as follows:  

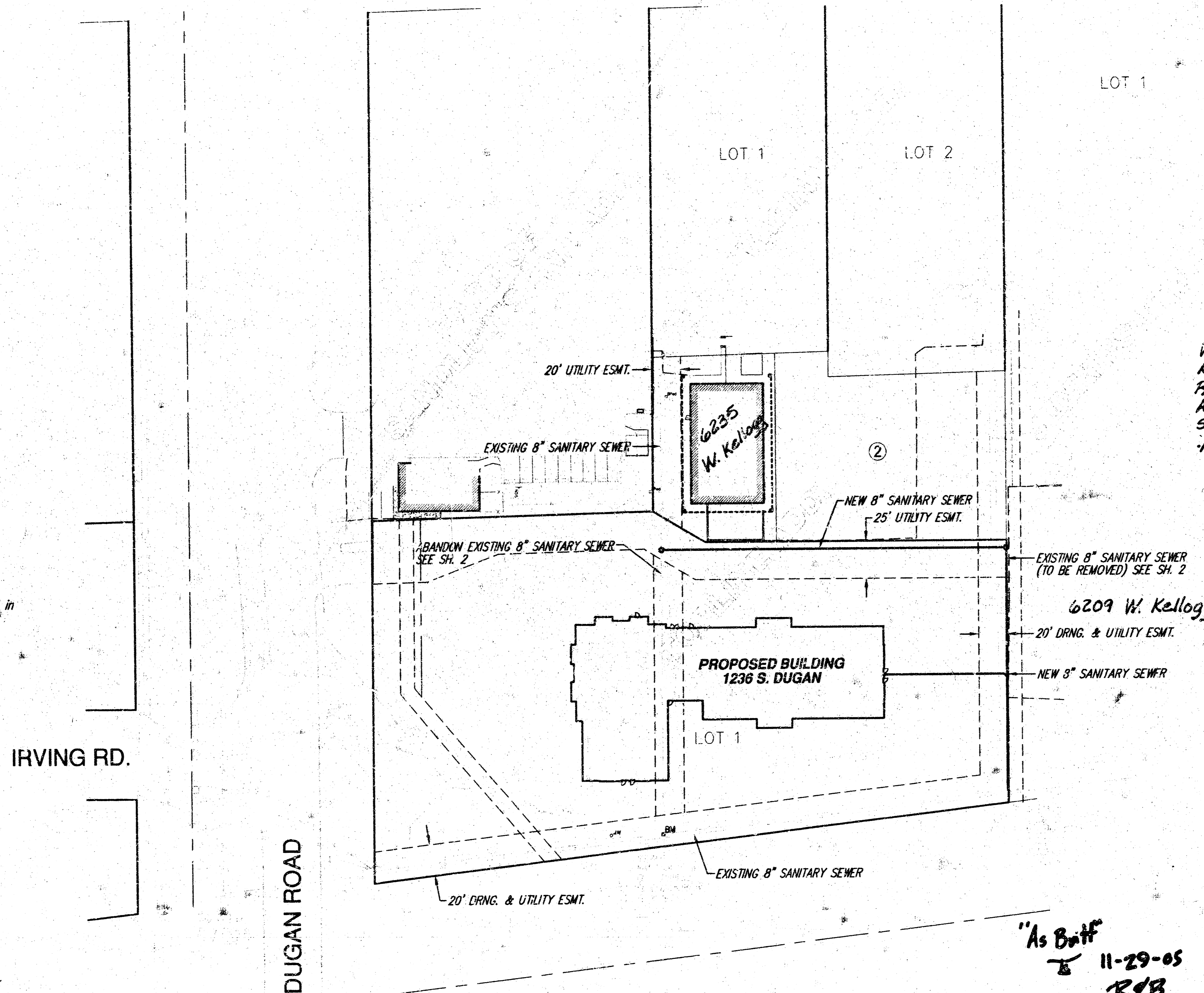
Kansas One-Call	687-2470
-----------------	----------

The Contractor must notify the following in case of an emergency:

Cox Communications	262-0661
Kansas Gas Service	383-8600
Westar	383-8600
Aquila Energy	1-800-303-0357
Southwestern Bell Telephone Company	1-800-286-8313
City of Wichita Water Department	262-6000
City of Wichita Sewer Maintenance	262-6000
- Existing utilities and their location, as shown on the plans, represent the best information obtainable for design. Location information has been obtained from the various utility companies and is either from company record drawings or company-provided field locations. The Contractor will be required to work around existing utilities within the right-of-way which do not conflict with proposed construction.
- This project is located within the limits of a larger project which will include building construction. The General Contractor for the project will submit a Storm Water Pollution Prevention Plan for the entire project prior to beginning any work on this project.
- This project is to be constructed in accordance with City of Wichita Standard Specifications for the Construction of City Projects, and Policy on Construction of Public Works Improvements by Private Contract.
- No work shall begin on this project before required bonds are submitted to the City of Wichita, and the project inspector has been notified.
- All areas of public R/W disturbed by construction of this project are to be restored in accordance with Administrative Regulation AR 78 of the City of Wichita.
- Sewage flow in the existing sanitary sewer shall be maintained at all times. The Contractor's plan for maintaining flow shall be submitted and approved by the Engineer prior to beginning work on the project.
- Traffic will not be affected by this project.



KELLOGG DRIVE



#### INDEX OF SHEETS

- INDEX SHEET
- SANITARY SEWER PLAN/PROFILE
- TYPE "P" MANHOLE DETAILS
- PLAT COPY

#### BENCHMARKS

NORTH RIM OF M.H. 20' E. & 6' N. OF  
S.W. COR. OF TORLINE ADDITION  
ELEV. 1304.14

Wildcat Construction Co., Inc. - Contractor  
Kelly, R+B - Inspector  
Released 11/30/05  
As-Built  
Some existing line abandoned, some removed + replaced  
pdf by JDL 12/6/05

APPROVED AS NOTED  
BY CITY ENGINEER, OF WICHITA

Sanitary Sewers URH 7/19/05

Storm Sewers \_\_\_\_\_

Driveway Approaches \_\_\_\_\_

Water Mains \_\_\_\_\_

Paving \_\_\_\_\_

NOTE TO CONTRACTORS

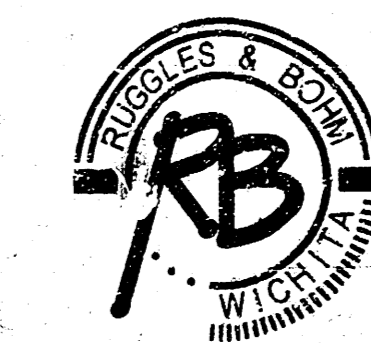
Inspection and testing for this project are to be provided by a Licensed Consulting Engineering Firm under contract with the Owner/Developer. Said inspection to be in accordance with the City of Wichita standard construction engineering practices and certified by a Licensed Professional Engineer. No work shall be performed in dedicated easements or public right-of-way by the Contractor without such inspection, nor shall any work be commenced without written authorization by the City Engineer.

"As Built"  
11-29-05  
R+B



SCALE: 1"=50'

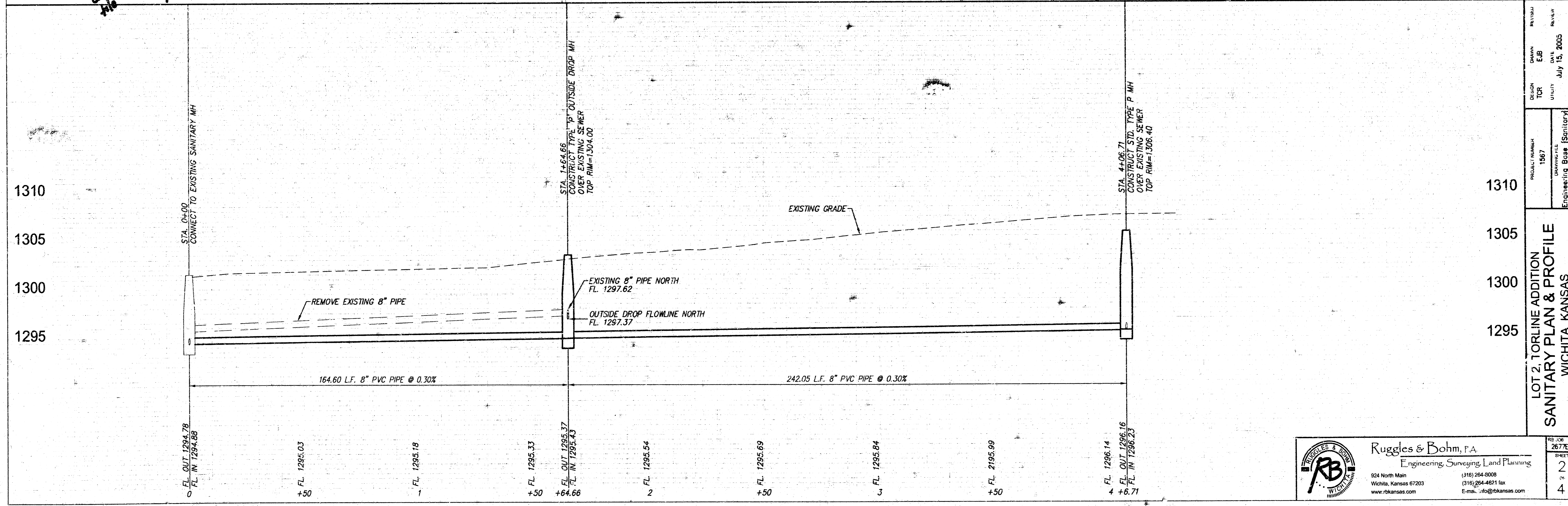
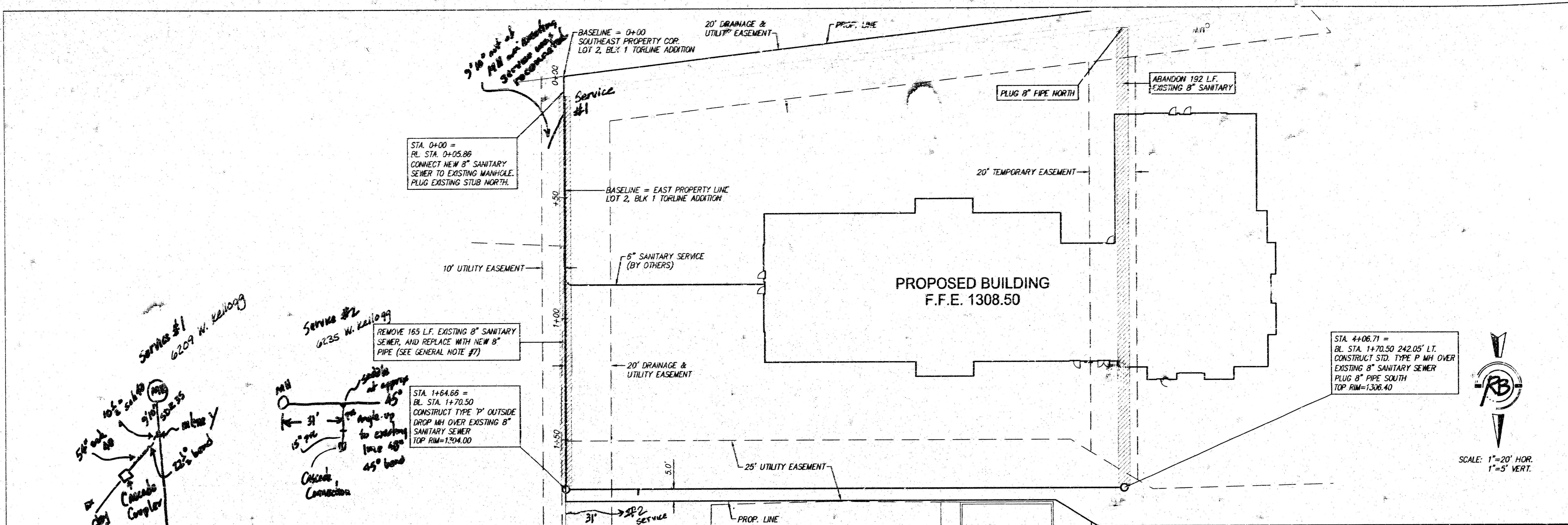
**CITY OF WICHITA, KANSAS**  
**JAMES L. ARMOUR, P.E., CITY ENGINEER**



**Ruggles & Bohm, P.A.**  
Engineering, Surveying, Land Planning  
924 North Main (316) 264-8008  
Wichita, Kansas 67203 (316) 264-4621  
www.rbkansas.com E-mail: info@rbkansas.com

267E

18 08 02 08



LOT 2, TORLINE ADDITION  
 SANITARY PLAN & PROFILE  
 WICHITA, KANSAS

Product Number: 1587  
 Drawing File: 040705-1587.dwg  
 Engineering Base (Sanitary)

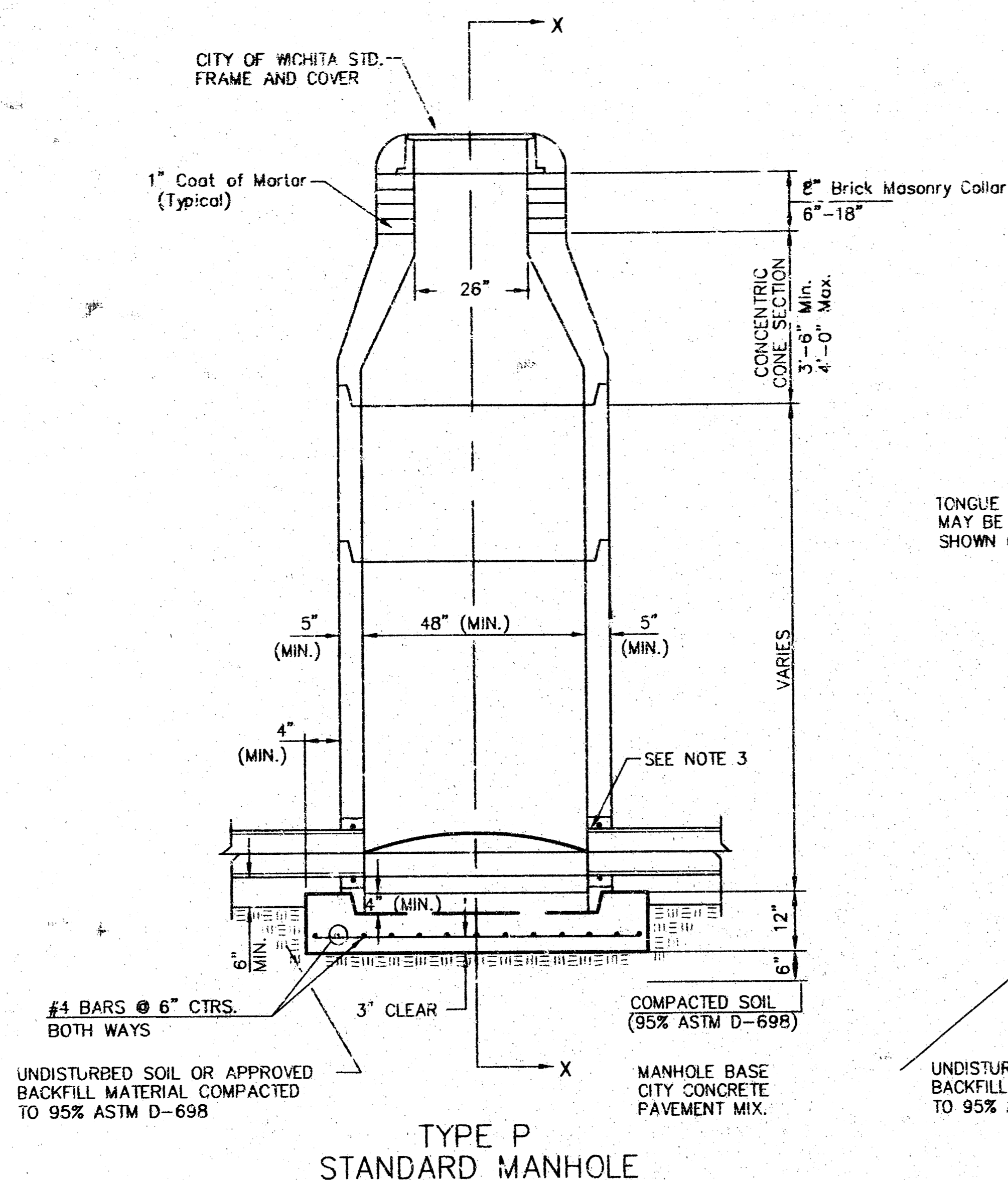
DESIGN: TCR  
 CHECK: EJP  
 DATE: July 15, 2005  
 REVIEW: H.W.

**Ruggles & Bohm, P.A.**  
 Engineering, Surveying, Land Planning

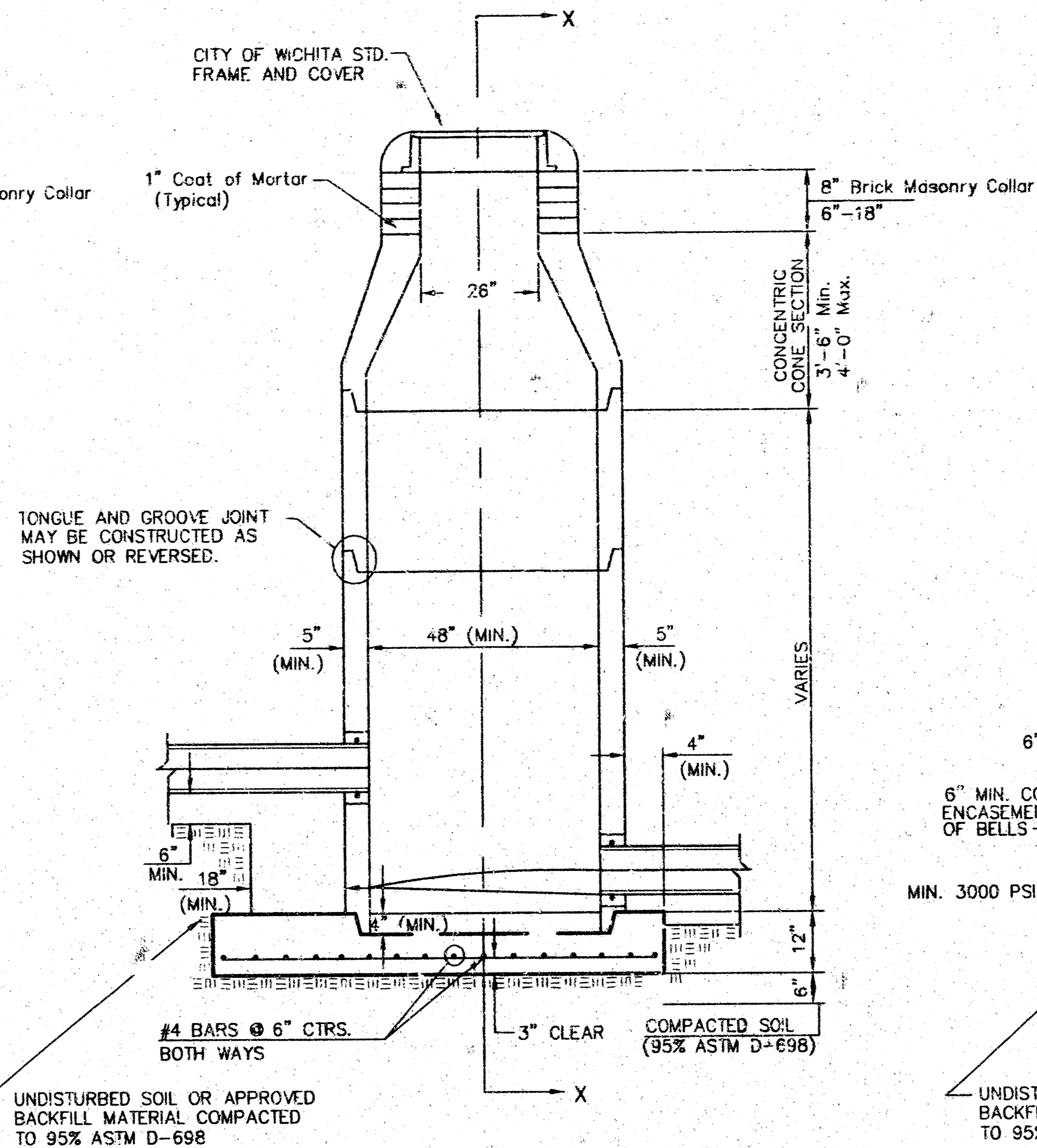
504 North Main  
 Wichita, Kansas 67203  
 www.rbkansas.com

(316) 264-0008  
 (316) 264-4621 fax  
 E-mail: info@rbkansas.com

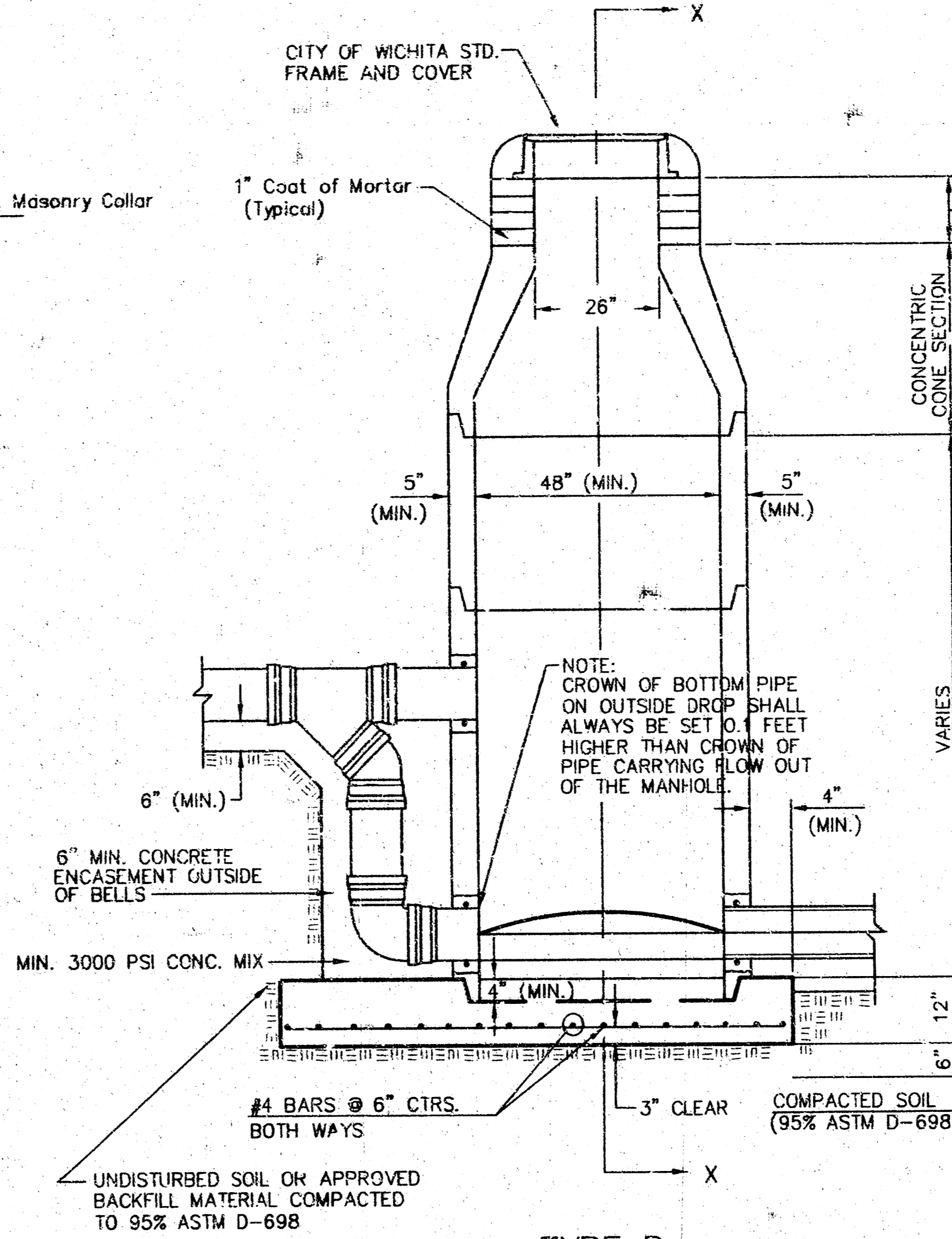
# SEWER APPURTENANCES DETAILS



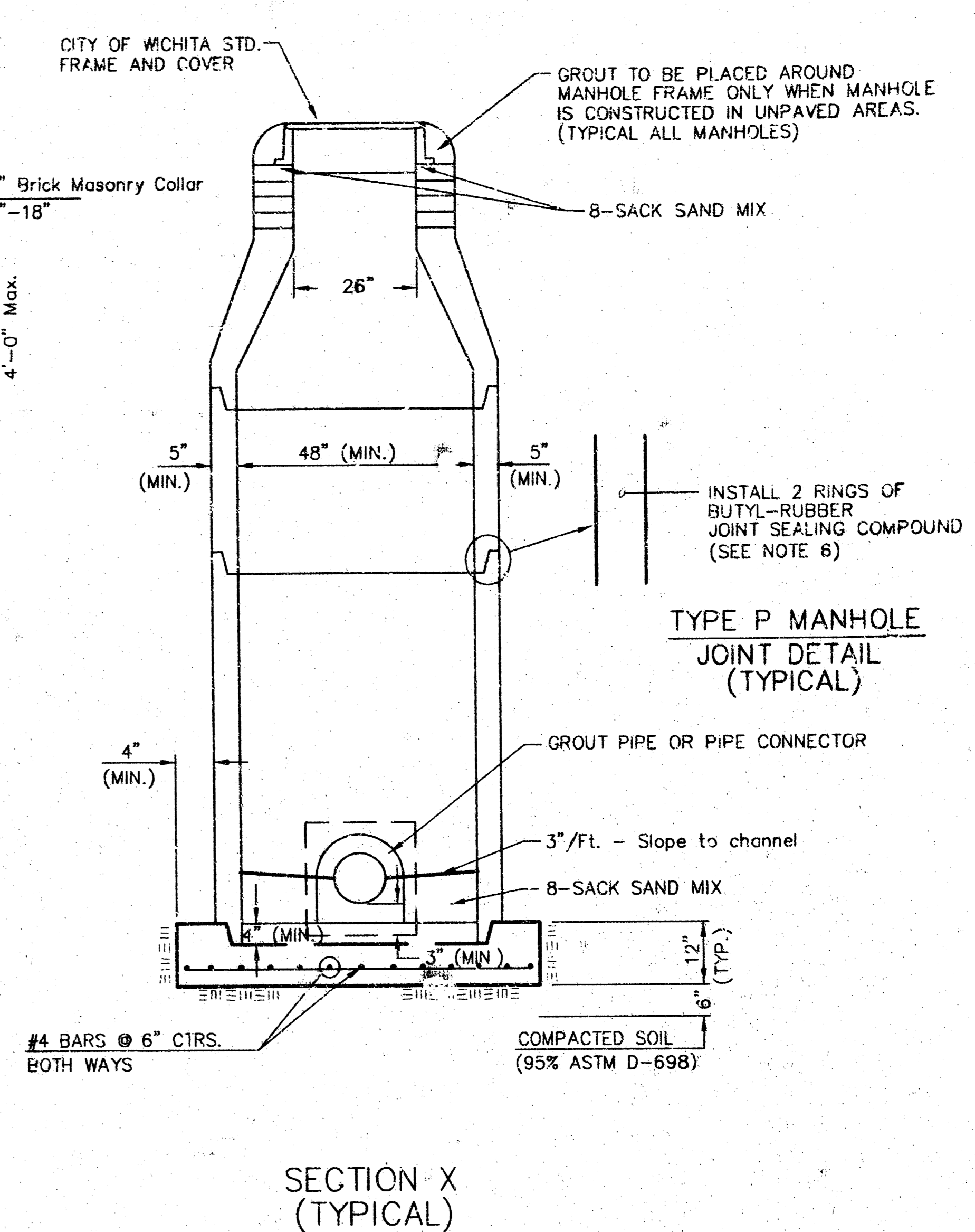
TYPE P STANDARD MANHOLE



TYPE P INSIDE DROP MANHOLE



TYPE P OUTSIDE DROP MANHOLE



SECTION X (TYPICAL)

GENERAL NOTES  
PRECAST MANHOLE NOTES

- ALL PRECAST CONCRETE MANHOLE SECTIONS SHALL CONFORM TO THE LATEST REVISIONS OF A.S.T.M. C478 AS MODIFIED BY THE SPECIFICATIONS.
- NON-SHRINK GROUT SHALL BE NON-METALLIC TYPE.
- APPROVED FLEXIBLE WATERSTOP GASKETS SHALL BE INSTALLED TO JOIN THE SEWER TO THE MANHOLE WALL WHEN A.B.S. COMPOSITE PIPE OR P.V.C. PIPE IS USED. FOR OTHER TYPES OF PIPE THE SEWER SHALL BE GROUTED IN PLACE WITH NON-SHRINK GROUT. THE SEWER PIPE SHALL BE SUPPORTED WITH CONCRETE ENCASEMENT A MINIMUM OF 3 FEET FROM THE MANHOLE WALL AND TO THE FIRST JOINT FOR V.C.P. SUCH THAT THE JOINT REMAINS FLEXIBLE.
- ALL INSIDE SURFACES OF THE CONCRETE MANHOLE WHICH WOULD BE EXPOSED TO SEWER GAS SHALL BE COATED WITH 2 COATS INEMEC SERIES 66 HI-BUILD EPOXYLINE, DRY THICKNESS OF 8 MILS (MIN.)
- EXTERIOR MANHOLE WALLS SHALL BE COATED WITH 1 COAT MOBILARMA 633 BITUMINOUS COATING.
- JOINT SEALING COMPOUND SHALL BE KENT SEAL NO. 2 OR APPROVED EQUAL.
- PRECAST MANHOLES SHALL BE SET AT LEAST 4 INCHES INTO THE MANHOLE BASE.
- TOP OF MANHOLE FLOOR SLAB SHALL BE AT LEAST 3 INCHES BELOW THE FLOW LINE OF THE OUTLET PIPE TO INSURE SUFFICIENT MINIMUM THICKNESS OF SHAPED INVERT.
- LIFTING HOLES SHALL BE FILLED WITH NON-SHRINK GROUT AND THE INTERIOR SURFACE COATED AS SPECIFIED.
- MORTAR USED IN MASONRY CONSTRUCTION SHALL CONTAIN 8 SACKS OF CEMENT PER CUBIC YARD. CONCRETE USED IN MANHOLE BASES SHALL CONFORM TO THE REQUIREMENTS OF CONCRETE FOR CONCRETE PAVEMENT CONSTRUCTION AS SPECIFIED IN THE CITY STANDARD PAVING SPECIFICATIONS USING CITY CONCRETE PAVEMENT MIX WITHOUT AIR ENTRAINING ADMIXTURE. MORTAR SHALL BE PLACED AROUND THE MANHOLE RING AS SHOWN ON THE DRAWINGS WHEN MANHOLES ARE CONSTRUCTED IN UNPAVED AREAS. MANHOLES CONSTRUCTED WHERE PIPE SIZES ARE SMALLER THAN 24" SHALL HAVE AN INSIDE DIAMETER OF 4". MANHOLES CONSTRUCTED WHERE PIPE SIZES ARE 24" OR LARGER SHALL HAVE AN INSIDE DIAMETER OF 5". COMPLETED MANHOLE SHALL BE WITHOUT LEAKS AND WATER TIGHT.

- REINFORCING STEEL SHALL BE INSTALLED IN THE MANHOLE BASES AND SHALL CONSIST OF NO. 4 BARS PLACED ON 6" CENTERS IN BOTH DIRECTIONS. THE MANHOLE BASE REINFORCEMENT SHALL BE PLACED AT LEAST 3" ABOVE THE BOTTOM OF THE MANHOLE BASE. ALL COSTS FOR FURNISHING AND INSTALLING REINFORCING STEEL SHALL BE INCLUDED IN THE UNIT PRICE BID FOR THE MANHOLE.
- OPENINGS SHALL BE CUT INTO THE MANHOLE WALL WHEN OUTSIDE DROPS ARE CONSTRUCTED ON EXISTING MANHOLES. SUCH OPENINGS CUT INTO EXISTING MANHOLES SHALL BE AS SMALL AS PRACTICAL TO FACILITATE INSTALLING AND GROUTING THE NEW PIPE IN PLACE. WATERSTOP GASKETS SHALL BE USED WITH P.V.C. AND A.B.S. COMPOSITE PIPE. THE NEW PIPE SHALL BE GROUTED INTO THE OPENING USING AN APPROVED NONSHRINK GROUT FOR THE FULL MANHOLE WALL THICKNESS. THE EXTERIOR OF THE COMPLETED CONNECTION SHALL BE SEALED WITH AN APPROVED BITUMINOUS COATING SUCH THAT THE CONNECTION WILL BE WATER TIGHT. FLOOR OF MANHOLE SHALL BE MODIFIED TO FORM NEW FLOW CHANNEL FOR THE NEW CONNECTION AS INDICATED BY THE DRAWING. THIS WORK, INCLUDING MODIFICATION OF MANHOLE FLOOR, SHALL BE PAID FOR AT THE UNIT PRICE BID FOR OUTSIDE DROP STACK CONSTRUCTED ON EXISTING MANHOLE.
- FLOORS OF ALL MANHOLES SHALL BE SHAPED WITH FLOW CHANNELS SUCH THAT THE MANHOLES WILL BE SELF-CLEANING AND FREE OF AREAS WHERE SOLIDS COULD BE DEPOSITED AS SEWAGE FLOWS THROUGH THE MANHOLE FROM ALL INLET PIPES TO THE OUTLET PIPE. FLOW CHANNELS SHALL BE FORMED TO MATCH THE BOTTOM HALVES OF THE INFLOWING PIPES AND THE OUTFLOWING PIPE AS SHOWN BY THE DRAWINGS EXCEPT FOR INSIDE DROP MANHOLES. FLOW CHANNELS FOR INSIDE DROP MANHOLES SHALL BE CONSTRUCTED AS INDICATED BY THE DRAWING. MANHOLE FLOORS SHALL HAVE SLOPES OF 3 INCHES PER FOOT IN THE AREAS OUTSIDE OF THE FLOW CHANNELS SLOPED TOWARD THE FLOW CHANNELS. PIPES LAID THROUGH MANHOLES SHALL HAVE THE TOP HALF REMOVED TO NEAT LINES FOR THE FULL INSIDE DIAMETER OF THE MANHOLE. MANHOLE FLOORS SHALL BE SHAPED AROUND THE BOTTOM HALF OF THE PIPE WHICH FORMS THE FLOW CHANNEL.
- PIPES INSTALLED WITHIN THE EXCAVATION MADE FOR THE MANHOLE SHALL BE CRADLED WITH CONCRETE TO THE LIMITS OF THE MANHOLE EXCAVATION. WHEN CLAY PIPE IS USED, THE CRADLE SHALL EXTEND TO THE FIRST JOINT OUTSIDE THE MANHOLE. THE CRADLE SHALL BE TERMINATED AT THE CLAY PIPE JOINT IN A MANNER WHICH WILL MAINTAIN THE FLEXIBILITY OF THE JOINT. COST OF CRADLE WITHIN MANHOLE EXCAVATION OR TO CLAY PIPE JOINTS ADJACENT TO MANHOLE SHALL BE INCLUDED IN THE UNIT PRICE BID FOR THE MANHOLE.

- MANHOLE COVER CASTINGS AND MANHOLE FRAME CASTINGS SHALL CONFORM TO THE REQUIREMENTS AS INDICATED IN THE STANDARD SPECIFICATIONS AND AS SHOWN IN THE STANDARD DETAIL DRAWING.
- THE VERTICAL DROP IN INSIDE DROP MANHOLES SHALL NOT EXCEED 2' FOR INFLOWING PIPES SIZED 12" OR SMALLER AND 2' FOR INFLOWING PIPES LARGER THAN 12". THE CROWNS OF INFLOWING PIPES SHALL NEVER BE SET LOWER THAN THE CROWN OF THE OUTFLOWING PIPE.
- STANDARD MANHOLES AND STANDARD INSIDE DROP MANHOLES SHALL BE BID AS STANDARD MANHOLES FOR THE TYPE AND DIAMETER INDICATED. OUTSIDE DROP MANHOLES SHALL BE BID AS STANDARD OUTSIDE DROP MANHOLES FOR THE TYPE AND DIAMETER INDICATED. ALL MANHOLE DIAMETERS WILL BE 4' UNLESS INDICATED OTHERWISE.
- A BRICK MASONRY COLLAR SHALL BE INSTALLED BETWEEN THE CAST IRON FRAME AND THE CONCENTRIC CONE. THE COLLAR WILL HAVE 8" WALLS AND A VERTICAL HEIGHT OF 6" MINIMUM AND 18" MAXIMUM. A 1" COAT OF MORTAR WILL BE PLASTERED ON THE OUTSIDE OF THE COLLAR. THE USE OF PRE-CAST CONCRETE SPACERS FOR MANHOLE TOP ADJUSTMENT IS ALSO ALLOWED.

<p>THE CITY OF WICHITA</p> <p>CITY ENGINEER'S OFFICE CITY HALL - SEVENTH FLOOR 455 NORTH MAIN STREET WICHITA, KANSAS 67202 (316) 268-4500 FAX (316) 268-4118 FAX</p>	<p><b>STANDARD TYPE 'P' MANHOLES</b></p>	
	<p>PROJECT NUMBER 1567</p>	<p>OCA #</p>
<p>DATE MAR 95</p>	<p>SHEET 3 OF 4</p>	

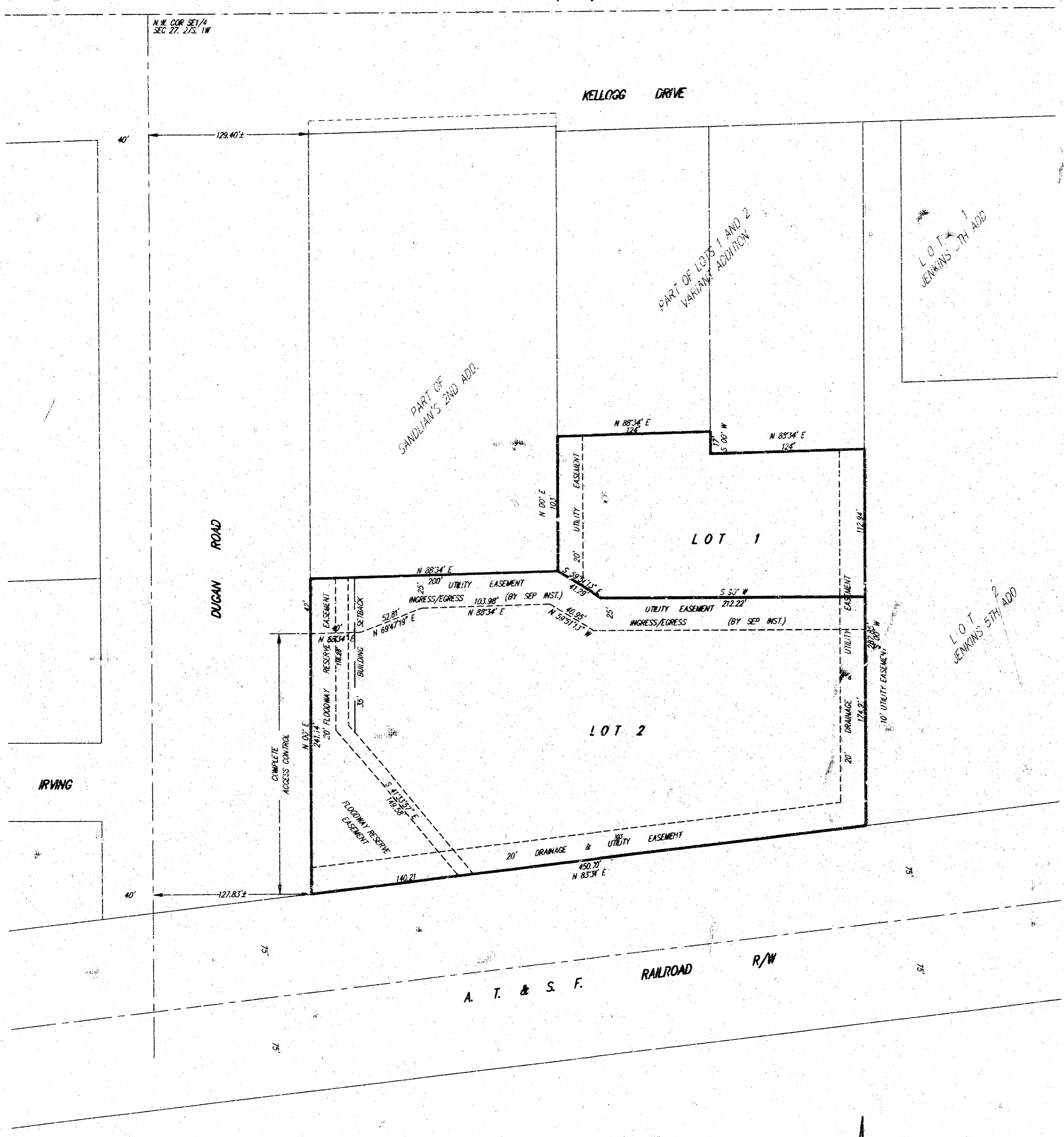
PC 80-10

KELLOGG (US 54) ST

KELLOGG DRIVE

# TORLINE ADDITION

WICHITA, SEDGWICK COUNTY, KANSAS



State of Kansas) SS  
Sedgwick County)

We, Savoy, Ruggles & Bohm, P.A., Surveyors in aforesaid county and state do hereby certify that, under the supervision of the undersigned, we have surveyed and plotted the "TORLINE ADDITION", Wichita, Sedgwick County, Kansas and that the accompanying plat is a true and correct exhibit of the property surveyed, described as follows:

The south 17 feet of Lot 1 and Lot 2, except the north 250 feet thereof, Variant Addition to Wichita, Kansas and part of Lot 1, Sandlian's 2nd Addition, Wichita, Kansas, described as beginning at the S.W. Corner of said Lot 1; thence north, 241.14 along the west line of Sandlian's 2nd Addition to a point being 350 feet south of the N.W. Corner of Sandlian's 2nd Addition; thence east, with a deflection angle to the right of 88°33'23", a distance of 200 feet to the east line of Sandlian's 2nd Addition; thence south, along the east line of Sandlian's 2nd Addition a distance of 223.60 feet to the S.E. Corner of Sandlian's 2nd Addition; thence southwest, along the south line of Sandlian's 2nd Addition, a distance of 201.2 feet to the point of beginning.

All being situated in the SE1/4 of Sec. 27, Twp. 27-S, R-1-W of the 6th P.M., Sedgwick County, Kansas.

Existing public easements and dedications being vacated by virtue of K.S.A. 12-312(b).

Savoy, Ruggles & Bohm, P.A.

Date 21 Sep 7  
Mark G. Savoy, P.L.S. #708 Surveyor



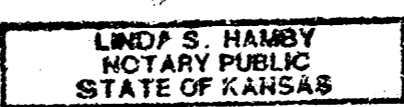
Know all men by these presents that we, the undersigned, have caused the land described in the surveyors certificate to be plotted into Lots and Streets to be known as "TORLINE ADDITION", Wichita, Sedgwick County, Kansas. The utility easements are hereby granted as indicated for the construction and maintenance of all public utilities. The private ingress-egress easement is being recorded by separate instrument. All abutting rights of access to or from Dugan Road, over and across all except the north 42 feet of the west line of Lot 2, are hereby granted to the City of Wichita, Kansas. The Floodway Reserve Easement is hereby reserved for floodway and shall be the responsibility of the owners of Lot 2, until such time as the governing body elects to assume responsibility for maintenance and improvement of the drainage, provided further that no building shall be constructed on or within said floodway, nor shall any fill, change of grade, creation of channel or other work be carried on without the permission of the appropriate governing body. The minimum pad elevation for the lowest opening to any structure on Lot 2, shall be 1308.5 Mean Sea Level, being 121.1 City Datum.

Randall J. Voith, President  
Voith Oil Company, Inc.

State of Kansas) SS  
Sedgwick County)

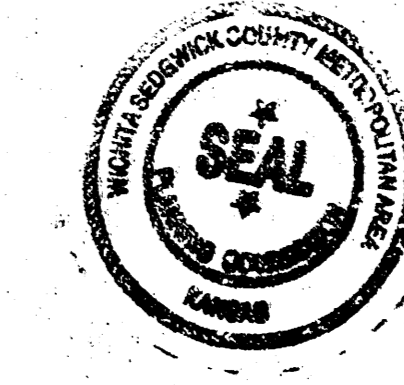
The foregoing instrument acknowledged before me, this 31st day of September, 1997, by Randall J. Voith, President of Voith Oil Company, Inc. on behalf of the corporation.

My App. Exp. 12-30-99  
Linda S. Hamby, Notary Public



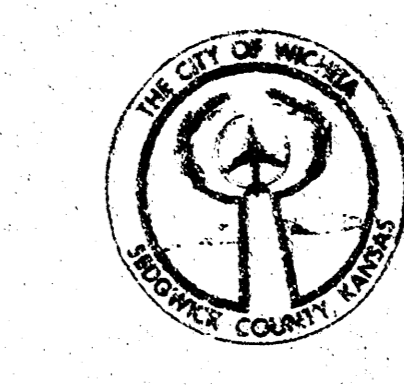
This plat of "TORLINE ADDITION", Wichita, Sedgwick County, Kansas has been submitted to and approved by the Wichita-Sedgwick County Metropolitan Area Commission, Wichita, Kansas, Dated this 29th day of December, 1997.

Wichita-Sedgwick County Metropolitan Area Planning Commission



John W. McKay, Chairman  
Marin S. Kraut, Secretary

This plat approved and all dedications shown hereon, accepted by the City Council of the City of Wichita, Kansas, this 7th day of October, 1997.



Bob Knight, Mayor  
Pat Burnett, City Clerk

Entered on transfer record this 22nd day of October, 1997.

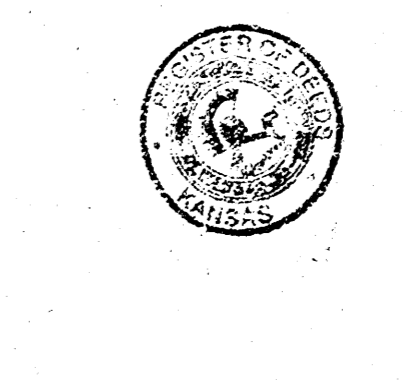


James Worford, County Clerk

State of Kansas) SS  
Sedgwick County)

This is to certify that this plat has been filed for record in the office of the Register of Deeds, this 22nd day of October, 1997, at 1:30 o'clock P.M. and is duly recorded.

Larry Consvler, Register of Deeds  
Michael D. Hurtt, Deputy



BENCHMARK:  
Pin of 1/4" x 20" E and 3/4" N of  
S.W. Corner of Torline Addition  
Elevation = 1304.14 M.S.L.  
Elevation = 118.74 City Datum

1" = 50'  
Iron  
Minimum Pad Elevation  
for lowest opening to any  
structure on Lot 2, shall  
be 1308.5 M.S.L.  
121.1 City Datum

SRB 924 NORTH MAIN 316-284-8008  
WICHITA, KANSAS 67203 FAX 264-4821  
SAVOY, RUGGLES & BOHM, P.A.  
ENGINEERING & SURVEYING

PROJECT NO. 9480021P  
DWG FILE 001219P - S.A.M.

PC 80-10

SHEET 4 OF 4

18 08 05 08