

SANITARY SEWER IMPROVEMENTS FOR TOWNE PARC ADDITION

PROJECT NO.

468-76-245-80001-000-000-145

APPROVED AS NOTED
By CITY ENGINEER OF WICHITA
Sanitary Sewers ELB 1/19/88
Storm Sewers _____
Driveway Approaches _____
Water Mains _____
Revised _____

NOTE TO CONTRACTOR

This project will be completed under the supervision of the CITY ENGINEER and conforming to the SPECIFICATIONS of the CITY OF WICHITA. The CONTRACTOR will pay the City of Wichita for all costs of plan review, inspection and booking per contract.

INDEX TO DRAWINGS

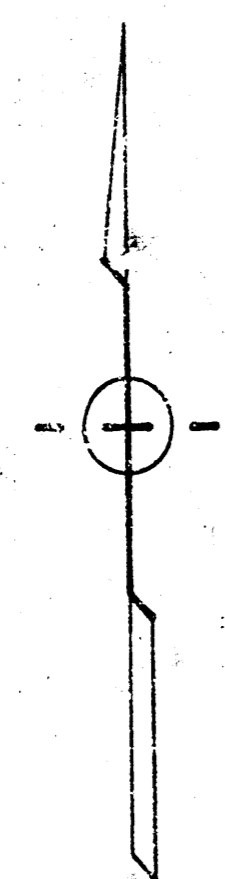
SH. NO.	DESCRIPTION
1	TITLE SHEET
2	LINE 1, PLAN - PROFILE
3	LINE 2, PLAN - PROFILE
4	LINE 3, PLAN - PROFILE

CITY OF WICHITA, KANSAS

MICHAEL E. LINDEBAK CITY ENGINEER

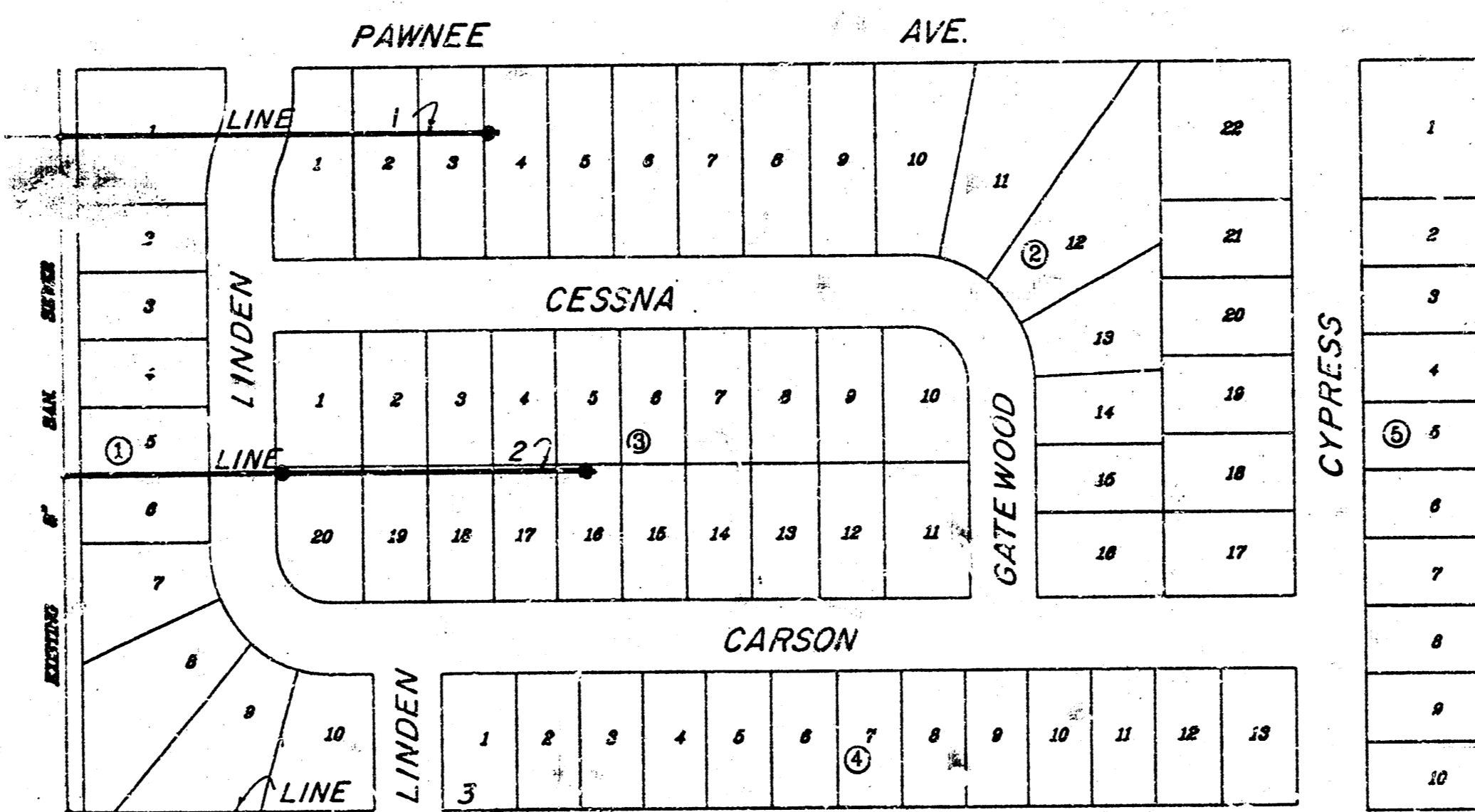
GENERAL NOTES

- Underground utility service lines and overhead utility pole lines are to be adjusted as necessary by others prior to construction unless the plans specifically call for their adjustment by the Contractor. Existing utilities and their location, as shown on the plans, represent the best information obtainable for design. Location information has been obtained from the various utility companies and is either from company record drawings or company provided field locations. The Contractor will be required to work around existing utilities within the right-of-way which do not conflict with proposed construction.
- The Contractor shall notify pipeline companies at least 24 hours in advance of work being performed across and/or adjacent to pipelines.
- The Contractor shall be responsible for preserving property irons. The Contractor will be required to re-establish any property irons which are damaged or destroyed by his construction operations. Such irons shall be re-established by a licensed land surveyor in accordance with state law.
- The Contractor shall use extreme care when working around the existing Southwestern Bell Underground Fiber Optic Cable and the existing Conoco Gas Pipeline. Extreme caution shall be exercised when excavating in the vicinity of these underground lines.
- The Contractor shall contact the appropriate adjacent property owners 7 days before entering their lots for construction of the sanitary sewer line.
- The Contractor shall rework inverts of Existing Manholes as required to provide smooth flow through Manholes.
- Contractor to maintain continuous flow of sewage at all times.



BENCH MARKS
Standard City Disk 2 feet east and 48 feet south of the N.W. Corner, N.E. Quarter, Section 5-28-2E Elevation = 192.20 City Datum.
Step Bench in south face of power pole, 591 feet east and 39 feet south of the N.W. Corner, N.E. Quarter, Section 5-28-2E, Elevation = 200.13

SCALE 1" = 150'



LOCATION MAP

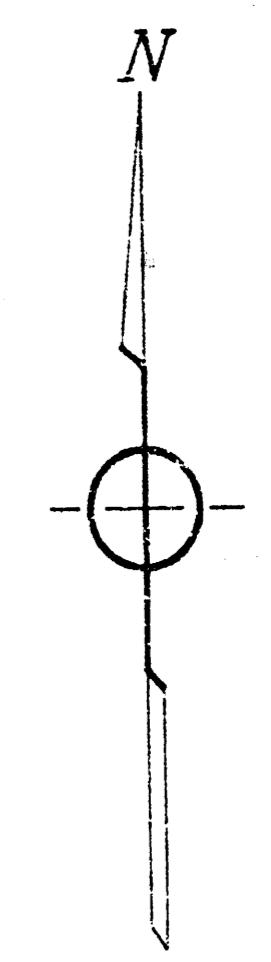
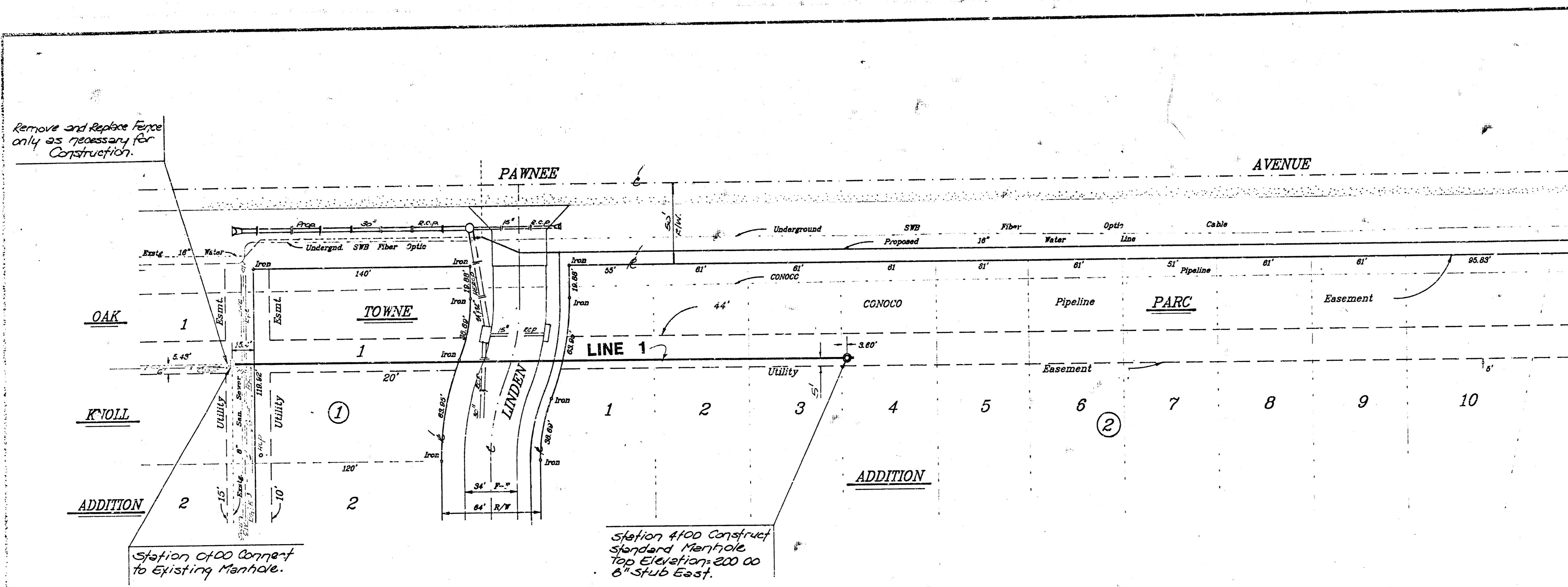


*Booked
as per plan
RDL*

Rev 2/19/88
BAUGHMAN COMPANY P. A.
SURVEYING & ENGINEERING
316/222-7271 • 315 ELLIS • WICHITA, KANSAS 67211

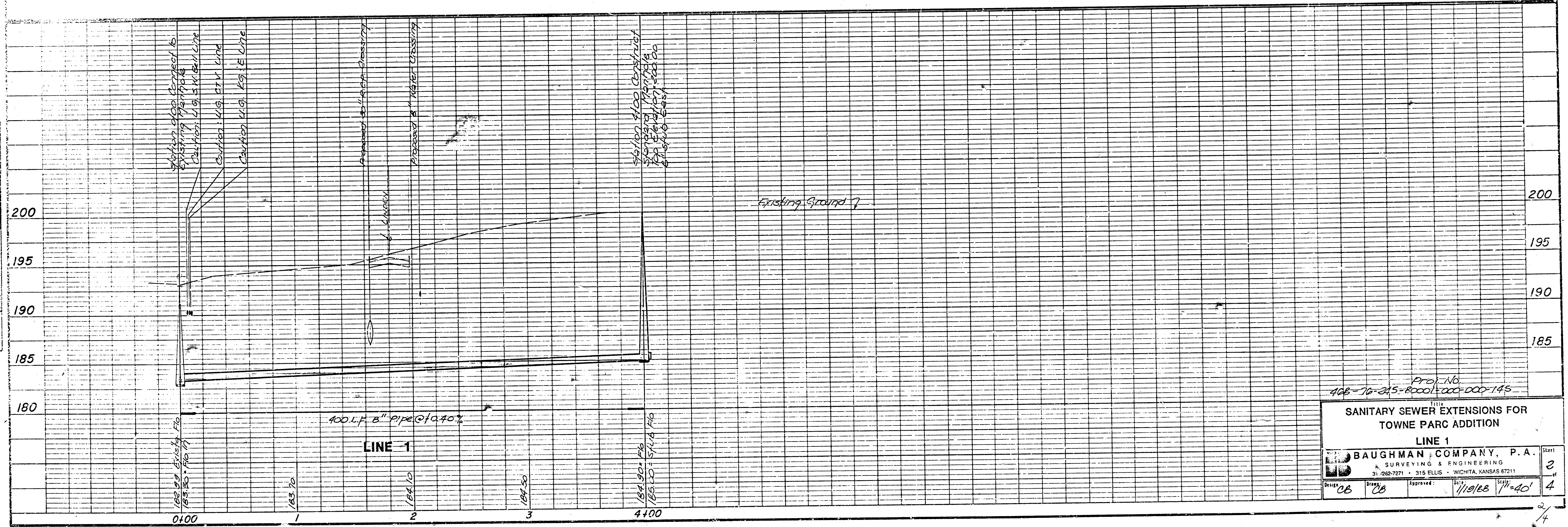
FILMED FROM THE BEST
AVAILABLE COPY.....

DATE	11/18/88
BY	CB
CHECKED	CB
APPROVED	CB
SCALE	1" = 40' PLAN 1" = 5' PROFILE
PROJECT	Sanitary Sewer Extensions for Towne Parc Addition
CLIENT	BAUGHMAN COMPANY, P.A.
PROJECT NO.	406-70-215-8001/000-000-145
DATE	11/18/88
SCALE	1" = 40'



Scale: 1" = 40' Plan
1" = 5' Profile

PROJECT	Sanitary Sewer Extensions for Towne Parc Addition
DATE	11/18/88
BY	CB
CHECKED	CB
APPROVED	CB
SCALE	1" = 40' PLAN 1" = 5' PROFILE
PROJECT NO.	406-70-215-8001/000-000-145
DATE	11/18/88
SCALE	1" = 40'



Proj. No.
406-70-215-8001/000-000-145

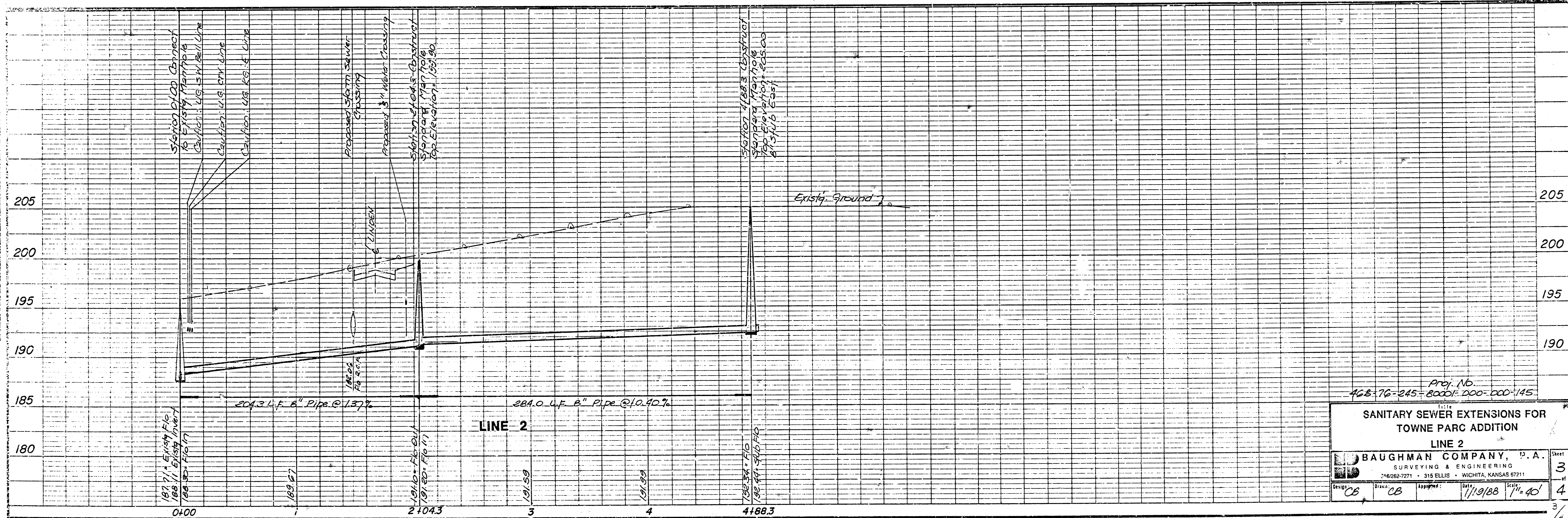
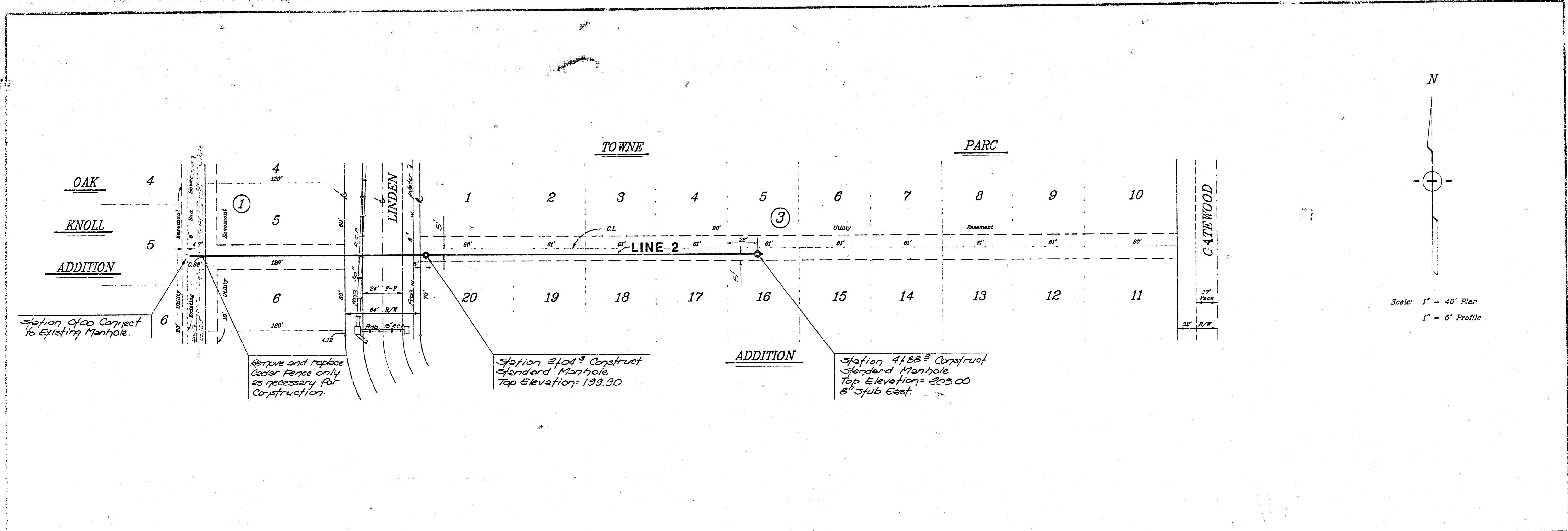
SANITARY SEWER EXTENSIONS FOR TOWNE PARC ADDITION
LINE 1

BAUGHMAN COMPANY, P.A.
A SURVEYING & ENGINEERING FIRM
315 ELLIS • WICHITA, KANSAS 67211

DATE: 11/18/88
SCALE: 1" = 40'

DESIGNED	CB
DRAWN	CB
CHECKED	CB
APPROVED	CB

FILMED FROM THE BEST AVAILABLE COPY.....



Proj. No.
468-76-245-80001-000-000-145

**SANITARY SEWER EXTENSIONS FOR
TOWNE PARC ADDITION**

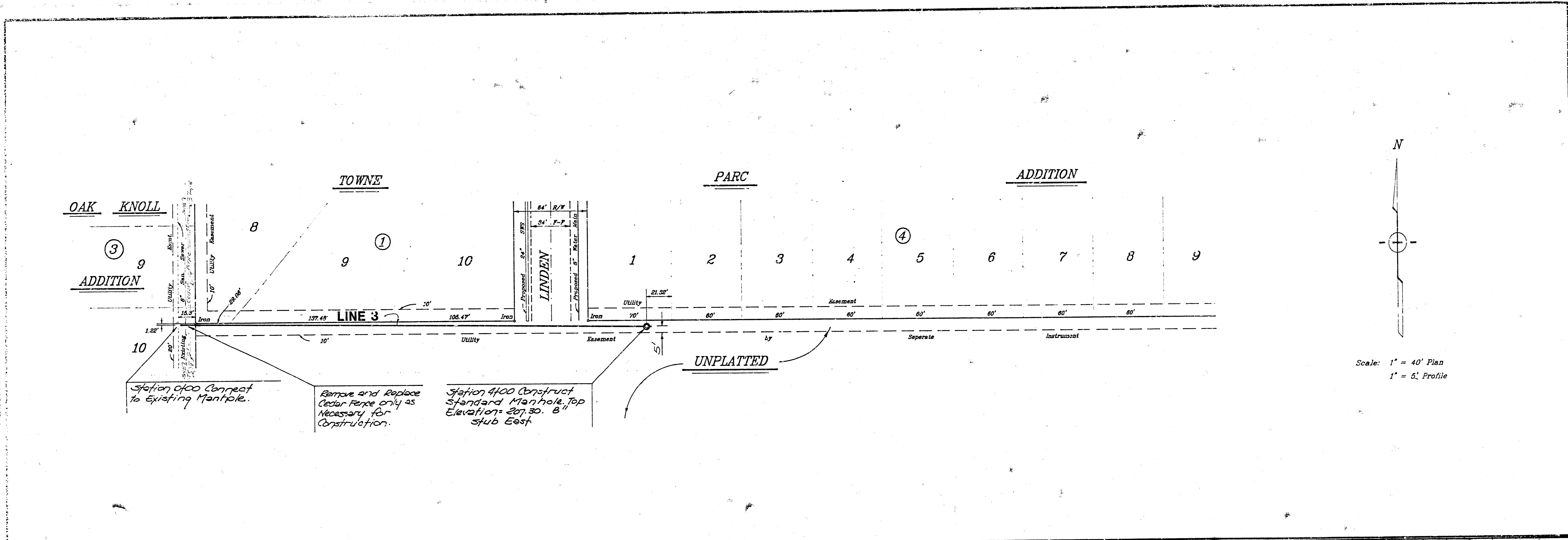
LINE 2

BAUGHMAN COMPANY, P.A.
SURVEYING & ENGINEERING
2462627271 • 315 ELLIS • WICHITA, KANSAS 67211

DATE: 11/19/88 SCALE: 1" = 40'

Sheet 3 of 4

FILMED FROM THE BEST AVAILABLE COPY.....

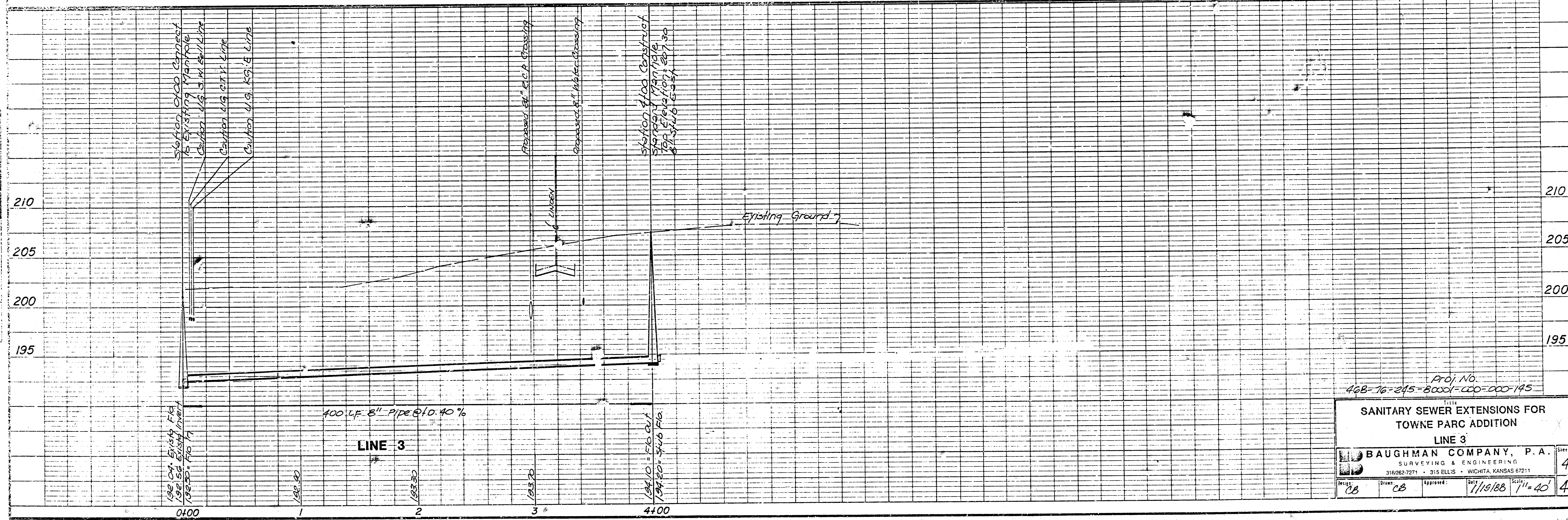


Station 0+00 Connect to Existing Manhole.

Remove and Replace Cedar Fence only as Necessary for Construction.

Station 4+00 Construct Standard Manhole Top Elevations 207.30, 8" stub East

UNPLATTED



Proj. No.
408-76-245-80001-100-000-145

TITLE
SANITARY SEWER EXTENSIONS FOR
TOWNE PARC ADDITION
LINE 3

BAUGHMAN COMPANY, P.A.	Sheet
SURVEYING & ENGINEERING	4
316.062-7271 • 316 ELLIS • WICHITA, KANSAS 67211	
Drawn: CB	Scale: 1" = 40'
Approved: 1/15/88	4

10 2 3 4

FILMED FROM THE BEST AVAILABLE COPY.....