

Scale: 1" = 20' Plan
1" = 5' Profile

Bench Mark: Square Cut in Top of Curb located at the Southwest Corner of Linden and Carson, Elevation = 201.71 City Datum

UNPLATED GROUND

GENERAL NOTES

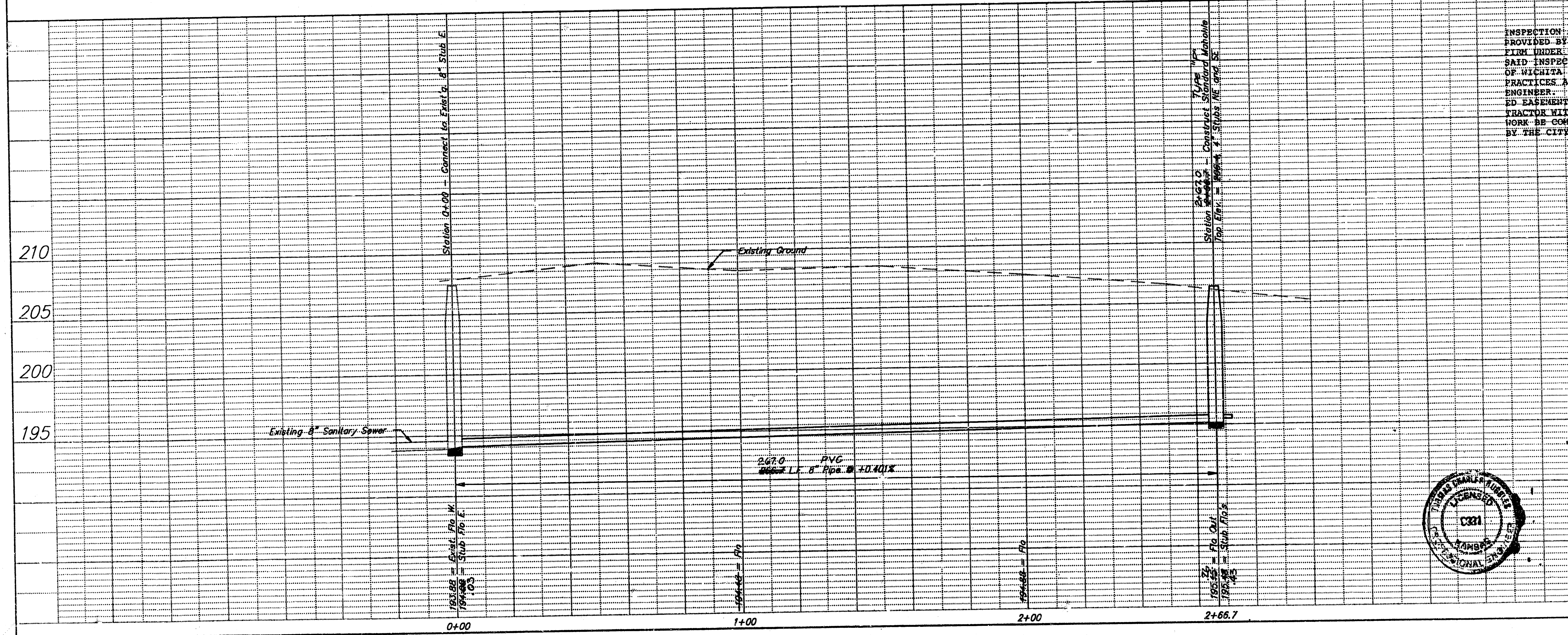
APPROVED AS NOTED
By CITY ENGINEER OF WICHITA
Sanitary Sewers *VRH 7/25/89*
Storm Sewers _____
Driveway Approaches _____
Water Mains _____
Paving _____

Underground utility service lines and overhead utility pole lines are to be adjusted as necessary by others prior to construction unless the plans specifically call for their adjustment by the Contractor or unless the plans specifically identify a utility to be adjusted by its owner during construction. Existing utilities and their location, as shown on the plans, represent the best information obtainable for design. The Contractor will be required to work around existing utilities within the right-of-way which do not conflict with proposed construction.

The Contractor shall be responsible for preserving property irons. The Contractor will be required to re-establish any property irons which are damaged or destroyed by his construction operations. Such irons shall be re-established by a licensed land surveyor in accordance with state laws.

NOTE TO CONTRACTOR

INSPECTION AND TESTING FOR THIS PROJECT IS TO BE PROVIDED BY A LICENSED CONSULTING ENGINEER FIRM UNDER CONTRACT WITH THE OWNER/DEVELOPER. SAID INSPECTION TO BE IN ACCORDANCE WITH THE CITY OF WICHITA STANDARD CONSTRUCTION ENGINEERING PRACTICES AND CERTIFIED BY A LICENSED PROFESSIONAL ENGINEER. NO WORK SHALL BE PERFORMED IN DEDICATED EASEMENTS OR PUBLIC RIGHT-OF-WAY BY THE CONTRACTOR WITHOUT SUCH INSPECTION AND SHALL ANY WORK BE COMMENCED WITHOUT WRITTEN AUTHORIZATION BY THE CITY ENGINEER.



*Booked
2-10
JPL*

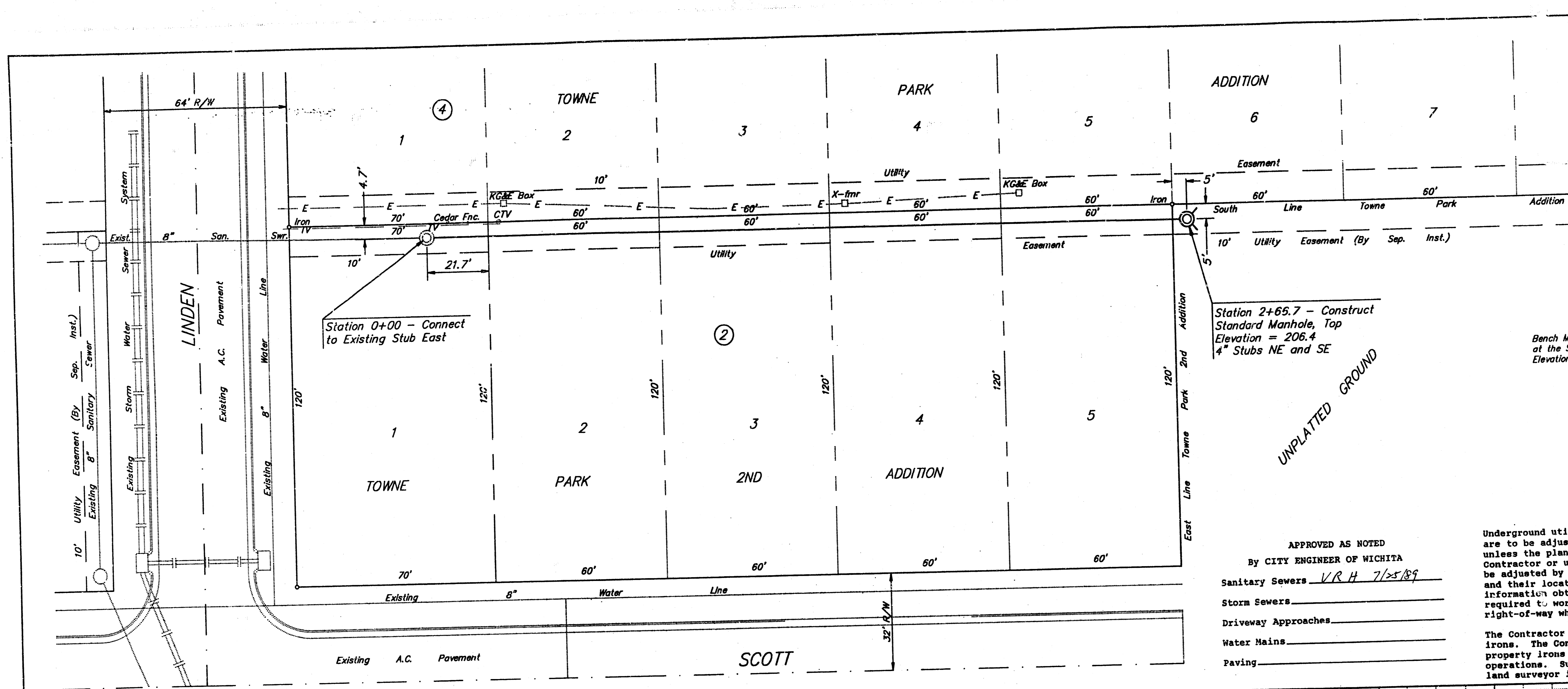
Revised as built 8-1-89 TCR



PRIVATE SANITARY SEWER EXTENSION TO SERVE LOTS 2 - 6, BLOCK 4, TOWNE PARK ADDITION LOTS 1 - 5, BLOCK 2, TOWNE PARK 2ND ADDITION	
BAUGHMAN COMPANY P. A. SURVEYING & ENGINEERING 316/262-7771 • 315 ELLIS • WICHITA, KANSAS 67211	
PROJECT NUMBER 224 PPS	SHEET 1 OF 1
DESIGN C. Bohm	DATE July 1989
DRAWN C. Bohm	SCALE Noted
APPROVED N.B.W.	

FILMED FROM THE BEST AVAILABLE COPY...

Scale: 1" = 20' Plan
1" = 5' Profile



Bench Mark: Square Cut in Top of Curb located at the Southwest Corner of Linden and Carson, Elevation = 201.71 City Datum

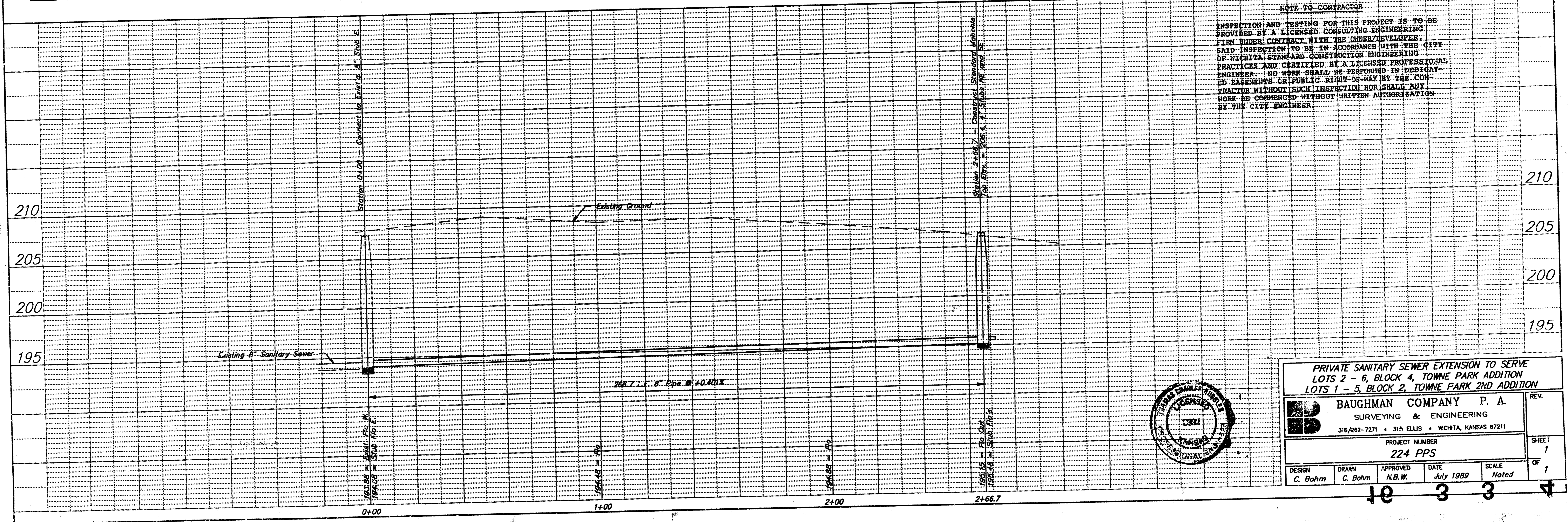
APPROVED AS NOTED
By CITY ENGINEER OF WICHITA
Sanitary Sewers V.R.H. 7/25/89
Storm Sewers _____
Driveway Approaches _____
Water Mains _____
Paving _____

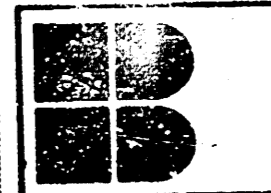
GENERAL NOTES

Underground utility service lines and overhead utility pole lines are to be adjusted as necessary by others prior to construction unless the plans specifically call for their adjustment by the Contractor or unless the plans specifically identify a utility to be adjusted by its owner during construction. Existing utilities and their location, as shown on the plans, represent the best information obtainable for design. The Contractor will be required to work around existing utilities within the right-of-way which do not conflict with proposed construction.

The Contractor shall be responsible for preserving property irons. The Contractor will be required to re-establish any property irons which are damaged or destroyed by his construction operations. Such irons shall be re-established by a licensed land surveyor in accordance with state laws.

NOTE TO CONTRACTOR
INSPECTION AND TESTING FOR THIS PROJECT IS TO BE PROVIDED BY A LICENSED CONSULTING ENGINEERING FIRM UNDER CONTRACT WITH THE OWNER/DEVELOPER. SAID INSPECTION TO BE IN ACCORDANCE WITH THE CITY OF WICHITA STANDARD CONSTRUCTION ENGINEERING PRACTICES AND CERTIFIED BY A LICENSED PROFESSIONAL ENGINEER. NO WORK SHALL BE PERFORMED IN DEDICATED EASEMENTS OR PUBLIC RIGHT-OF-WAY BY THE CONTRACTOR WITHOUT SUCH INSPECTION AND TESTING. ANY WORK BE COMMENCED WITHOUT WRITTEN AUTHORIZATION BY THE CITY ENGINEER.



PRIVATE SANITARY SEWER EXTENSION TO SERVE LOTS 2 - 6, BLOCK 4, TOWNE PARK ADDITION LOTS 1 - 5, BLOCK 2, TOWNE PARK 2ND ADDITION			
 BAUGHMAN COMPANY P. A. SURVEYING & ENGINEERING 316/262-7271 • 315 ELLIS • WICHITA, KANSAS 67211			
PROJECT NUMBER 224 PPS		SHEET 1 OF 1	
DESIGN C. Bohm	DRAWN C. Bohm	APPROVED N.B.W.	DATE July 1989
SCALE Noted		SCALE Noted	

FILMED FROM THE BEST AVAILABLE COPY