

SANITARY SEWER EXTENSIONS

To Serve

TOWNE PARC 3rd ADDITION

Private Project No. 261 PPS

Index Code 607861

CITY OF WICHITA, KANSAS
Michael E. Lindebak City Engineer

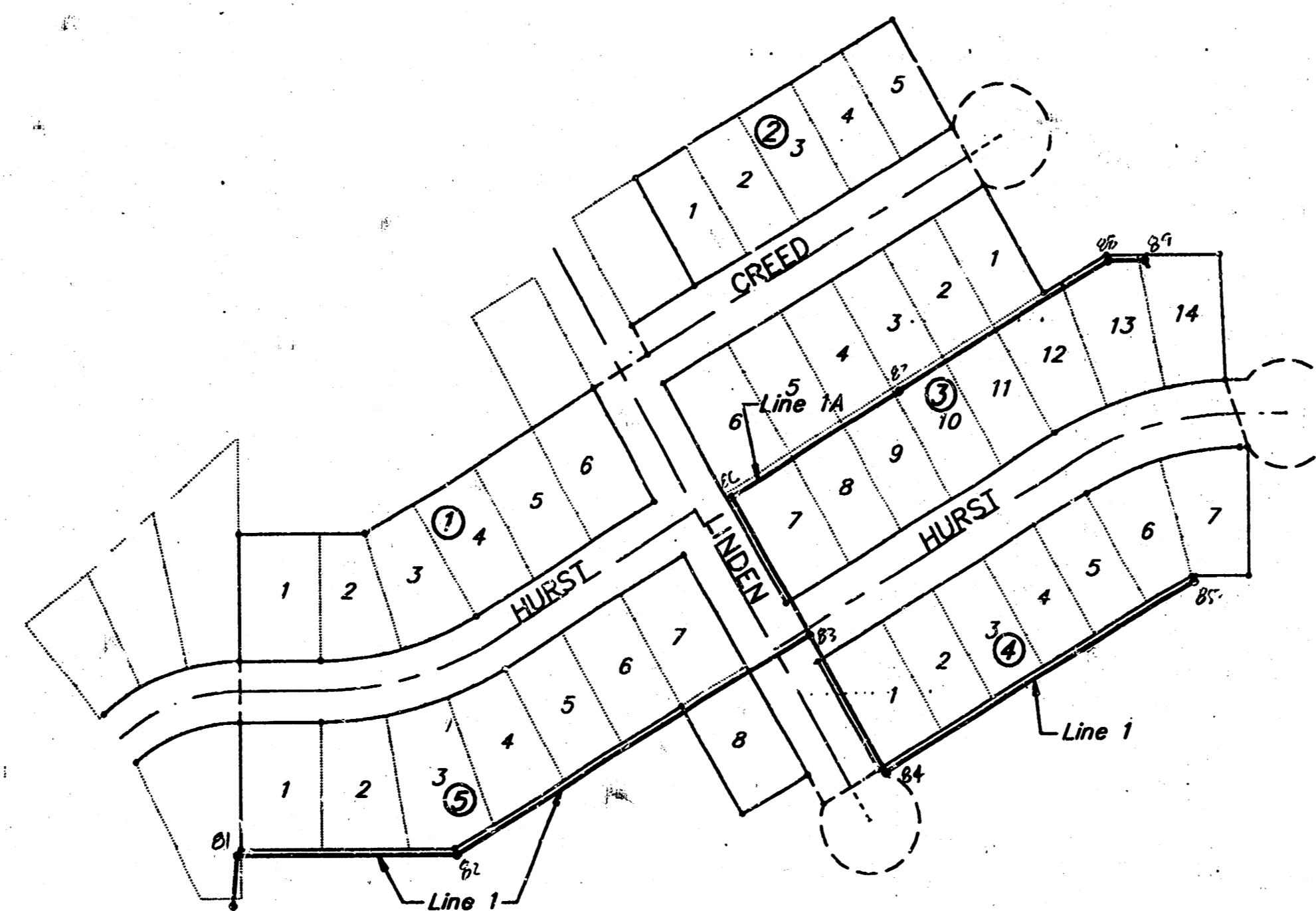
APPROVED AS NOTED
By CITY ENGINEER OF WICHITA
Sanitary Sewers VRH 9/6/90
Storm Sewers _____
Driveway Approaches _____
Water Mains _____
Paving _____

NOTE TO CONTRACTOR

INSPECTION AND TESTING FOR THIS PROJECT IS TO BE PROVIDED BY A LICENSED CONSULTING ENGINEERING FIRM UNDER CONTRACT WITH THE OWNER/DEVELOPER. SAID INSPECTION TO BE IN ACCORDANCE WITH THE CITY OF WICHITA STANDARD CONSTRUCTION ENGINEERING PRACTICES AND CERTIFIED BY A LICENSED PROFESSIONAL ENGINEER. NO WORK SHALL BE PERFORMED IN DEDICATED EASEMENTS OR PUBLIC RIGHT-OF-WAY BY THE CONTRACTOR WITHOUT SUCH INSPECTION NOR SHALL ANY WORK BE COMMENCED WITHOUT WRITTEN AUTHORIZATION BY THE CITY ENGINEER.

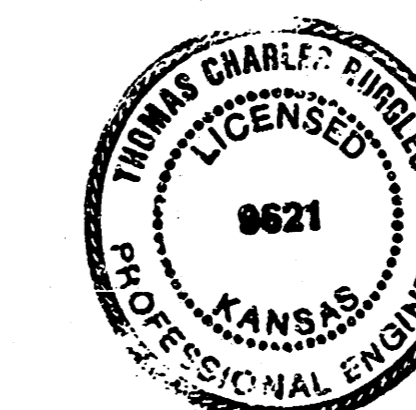
GENERAL NOTES

1. The Contractor shall be responsible for preserving property irons. The Contractor will be required to re-establish any property irons which are damaged or destroyed by his construction operations. Such irons shall be re-established by a licensed land surveyor in accordance with state laws.
2. The Contractor shall verify locations of underground utilities through Kansas One-Call (687-2470) prior to any excavation.
3. This project may be constructed prior to recording of the plat of Towne Parc 3rd Addition; Utility easements have been granted by separate instruments over the areas indicated on the plans as street right of way or utility easements.
4. The construction area shall be graded to the elevations shown on the plans after completion of sewer construction. The Contractor shall be responsible for grading all areas along the sewer, within the utility easement, to drain.



INDEX

- 1 - Title Sheet
- 2-3 - Plan/Profile
- 4 - Std. Manhole Detail

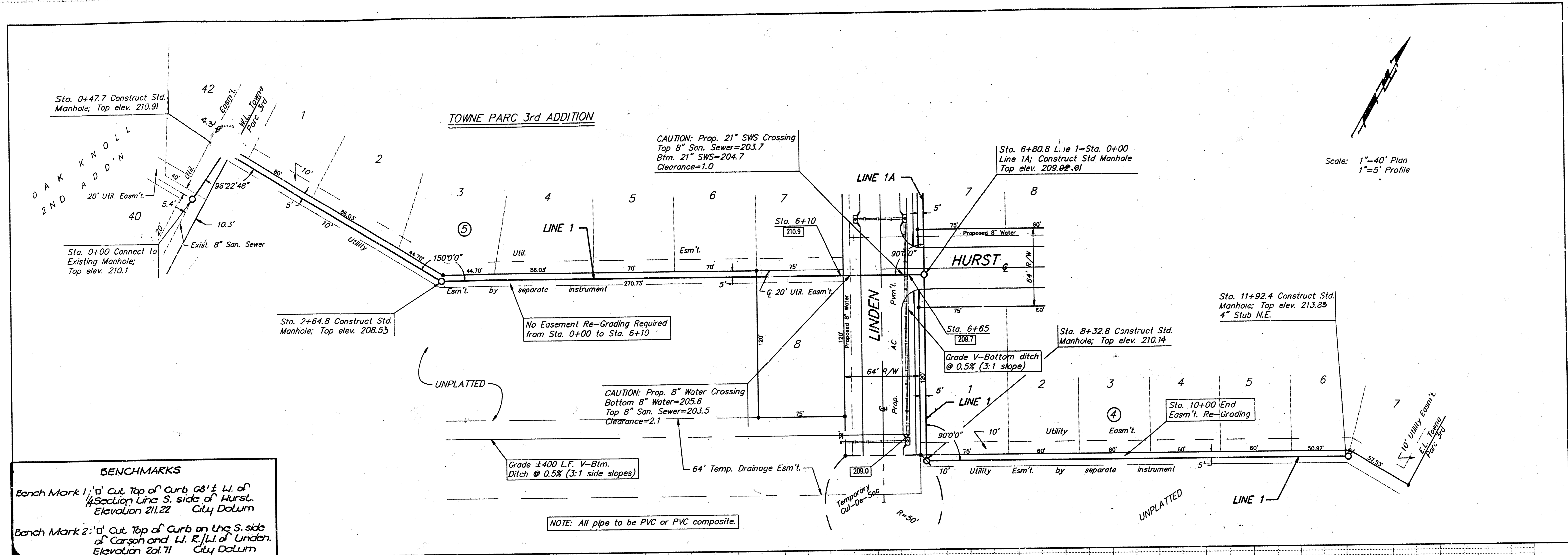


Booked
3-91
RDL

Revised As-Built 12-3-90

BAUGHMAN COMPANY P. A.
SURVEYING & ENGINEERING
316/282-7271 • 315 ELLIS • WICHITA, KANSAS 67211

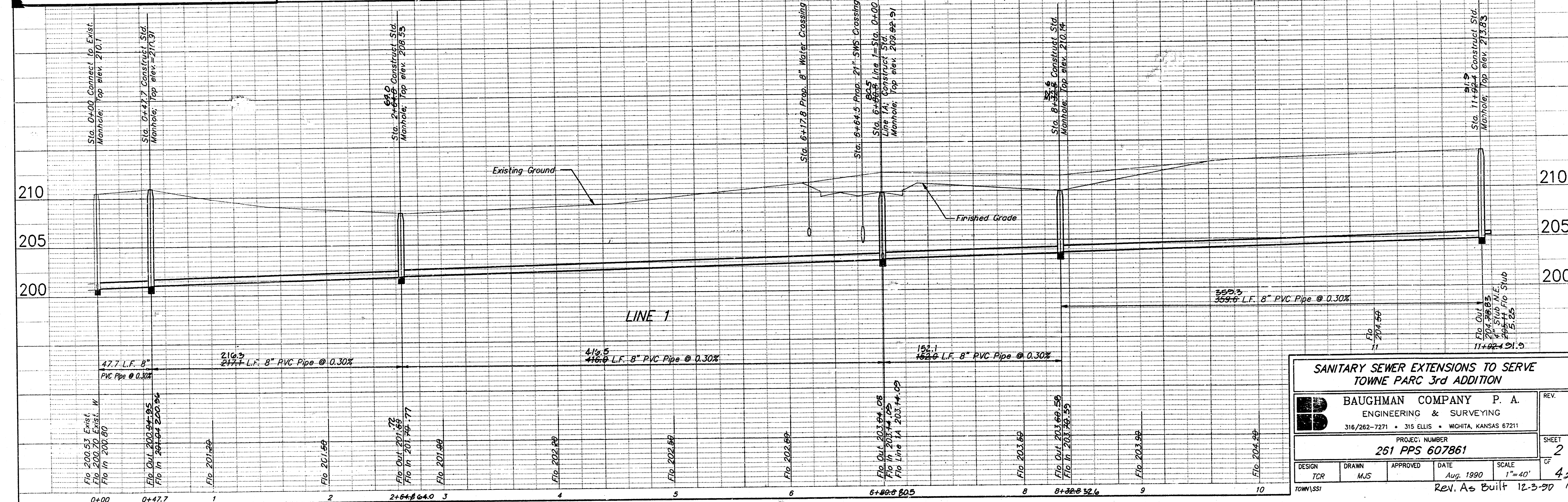
FILMED FROM THE BEST
AVAILABLE COPY



BENCHMARKS

Bench Mark 1: 1' d' Cut Top of Curb 08' ± W. of 1/4 Section Line S. side of Hurst. Elevation 211.22 City Datum

Bench Mark 2: 1' d' Cut Top of Curb on the S. side of Carson and W. R. W. of Linden. Elevation 201.71 City Datum



SANITARY SEWER EXTENSIONS TO SERVE TOWNE PARC 3rd ADDITION

BAUGHMAN COMPANY P. A.
ENGINEERING & SURVEYING
316/262-7271 • 315 ELLIS • WICHITA, KANSAS 67211

PROJECT NUMBER
261 PPS 607861

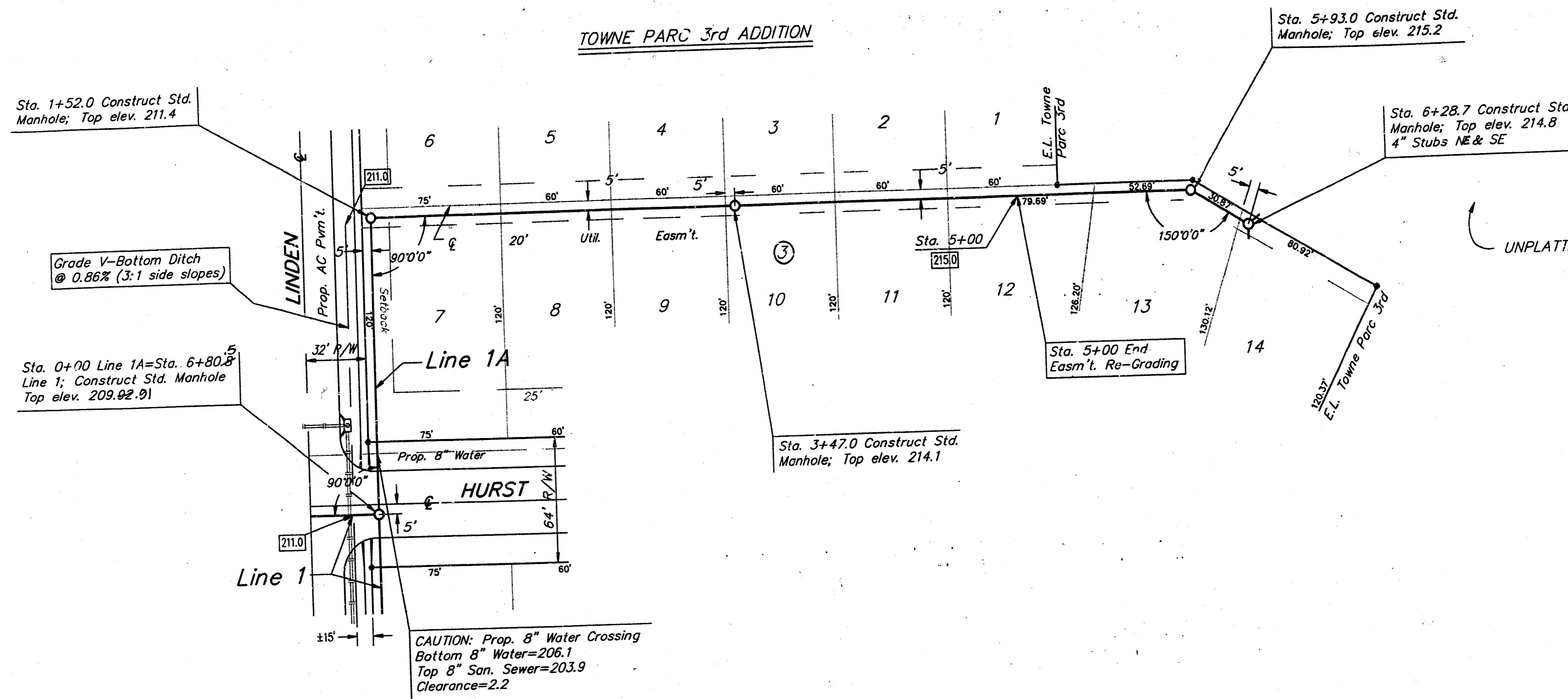
DESIGN TCR	DRAWN MJS	APPROVED	DATE Aug. 1990	SCALE 1"=40'
---------------	--------------	----------	-------------------	-----------------

SHEET 2 OF 4

REV. As Built 12-3-90

FILMED FROM THE BEST AVAILABLE COPY...

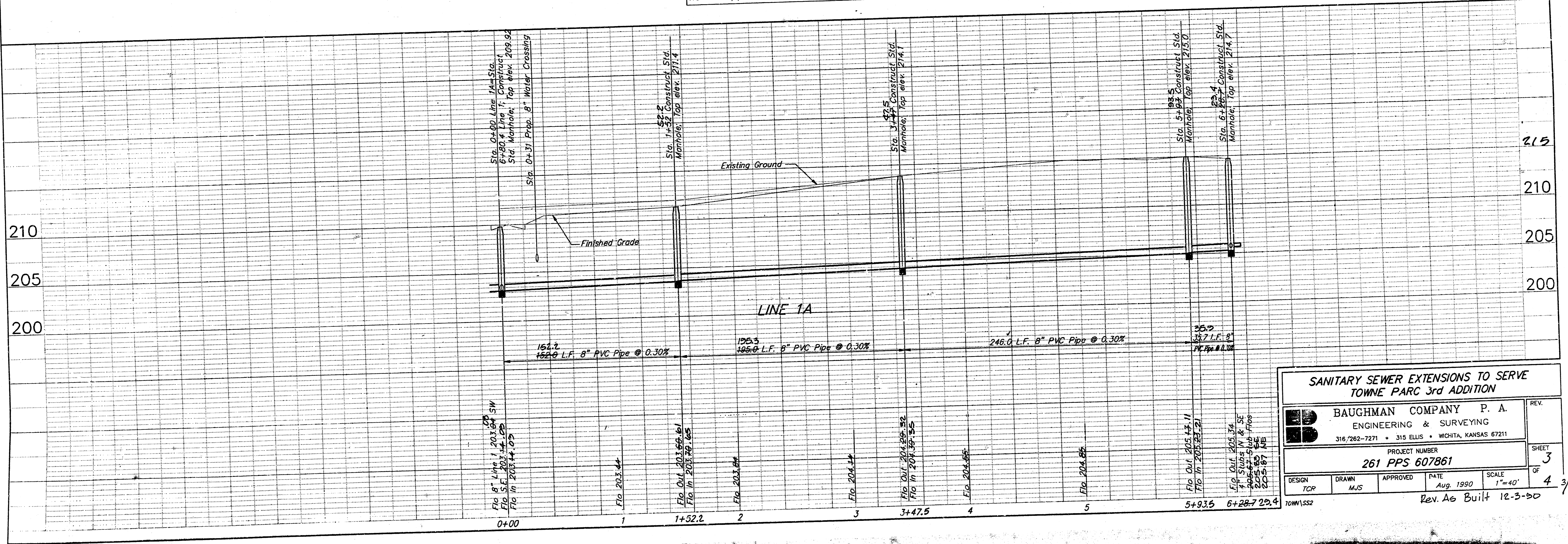
TOWNE PARC 3rd ADDITION



Scale: 1"=40' Plan
1"=5' Profile

CAUTION: Prop. 8" Water Crossing Bottom 8" Water=206.1 Top 8" San. Sewer=203.9 Clearance=2.2

NOTE: All pipe to be PVC or PVC Composite



SANITARY SEWER EXTENSIONS TO SERVE TOWNE PARC 3rd ADDITION

BAUGHMAN COMPANY P. A.
ENGINEERING & SURVEYING
316/262-7271 • 315 ELLIS • WICHITA, KANSAS 67211

PROJECT NUMBER
261 PPS 607861

DESIGN TCP	DRAWN MJS	APPROVED	DATE Aug. 1990	SCALE 1"=40'
---------------	--------------	----------	-------------------	-----------------

Rev. As Built 12-3-90

FILMED FROM THE BEST AVAILABLE COPY

201102

SANITARY SEWER EXTENSIONS

To Serve

TOWNE PARC 3rd ADDITION

Private Project No. 261 PPS

Index Code 607861

CITY OF WICHITA, KANSAS
Michael E. Lindebak City Engineer

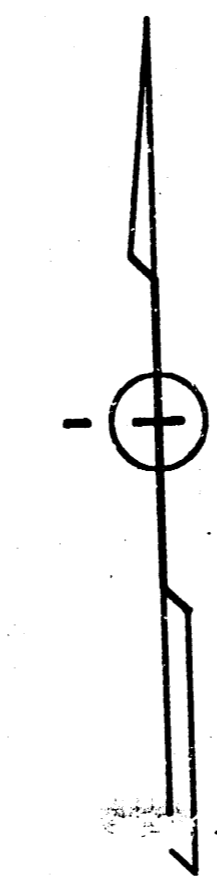
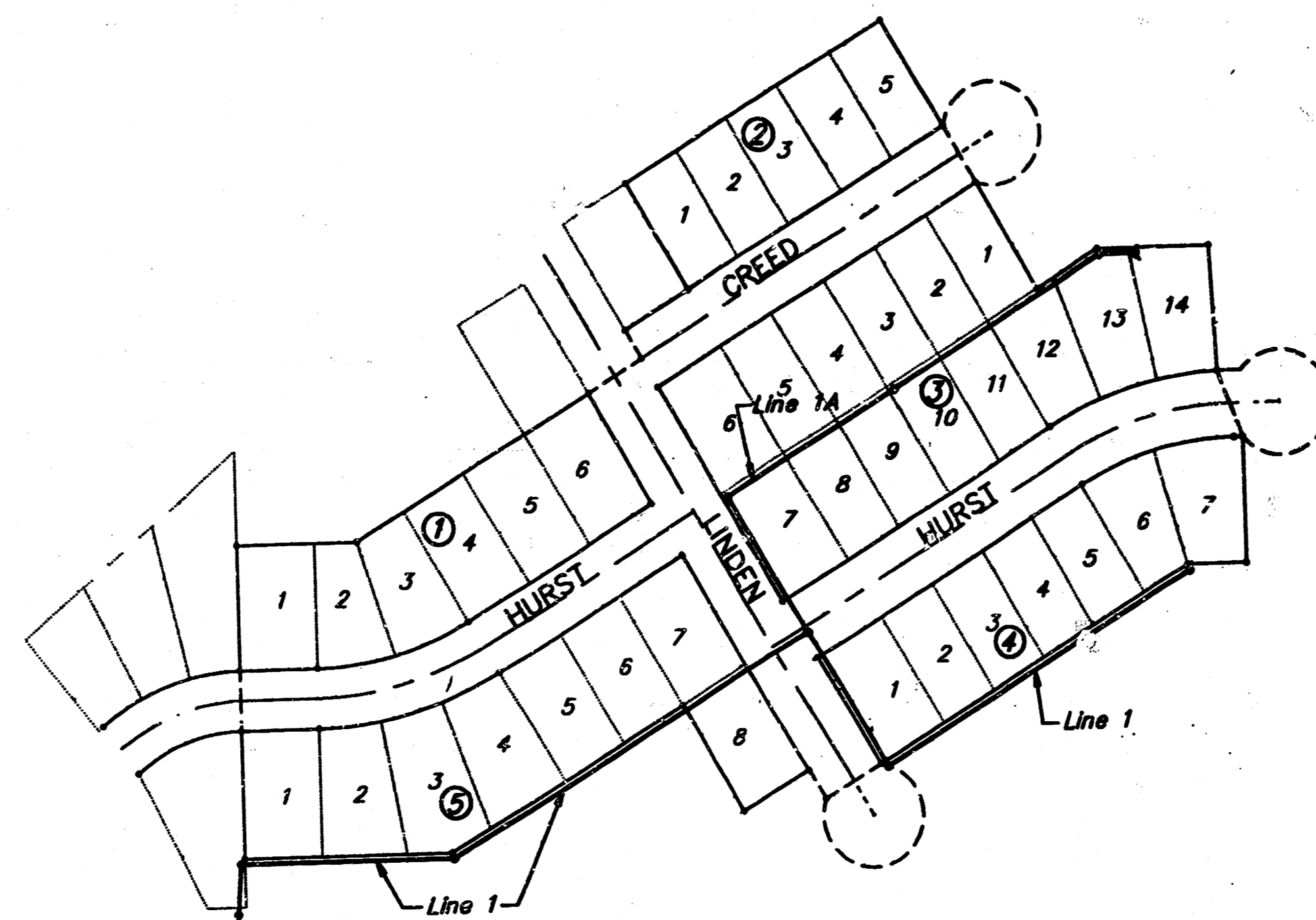
APPROVED AS NOTED
By CITY ENGINEER OF WICHITA
Sanitary Sewers VRH 9/6/40
Storm Sewers _____
Driveway Approaches _____
Water Mains _____
Paving _____

NOTE TO CONTRACTOR

INSPECTION AND TESTING FOR THIS PROJECT IS TO BE PROVIDED BY A LICENSED CONSULTING ENGINEERING FIRM UNDER CONTRACT WITH THE OWNER/DEVELOPER. SAID INSPECTION TO BE IN ACCORDANCE WITH THE CITY OF WICHITA STANDARD CONSTRUCTION ENGINEERING PRACTICES AND CERTIFIED BY A LICENSED PROFESSIONAL ENGINEER. NO WORK SHALL BE PERFORMED IN DEDICATED EASEMENTS OR PUBLIC RIGHT-OF-WAY BY THE CONTRACTOR WITHOUT SUCH INSPECTION NOR SHALL ANY WORK BE COMMENCED WITHOUT WRITTEN AUTHORIZATION BY THE CITY ENGINEER.

GENERAL NOTES

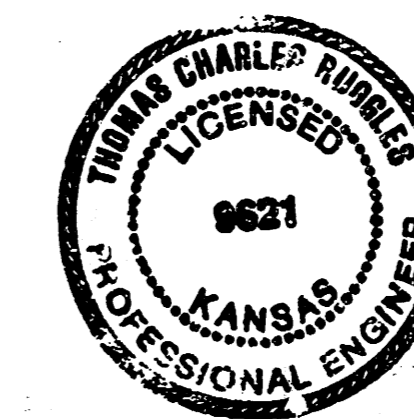
1. The Contractor shall be responsible for preserving property irons. The Contractor will be required to re-establish any property irons which are damaged or destroyed by his construction operations. Such irons shall be re-established by a licensed land surveyor in accordance with state laws.
2. The Contractor shall verify locations of underground utilities through Kansas One-Call (687-2470) prior to any excavation.
3. This project may be constructed prior to recording of the plat of Towne Parc 3rd Addition; Utility easements have been granted by separate instruments over the areas indicated on the plans as street right of way or utility easements.
4. The construction area shall be graded to the elevations shown on the plans after completion of sewer construction. The Contractor shall be responsible for grading all areas along the sewer, within the utility easement, to drain.



SCALE: 1" = 150'

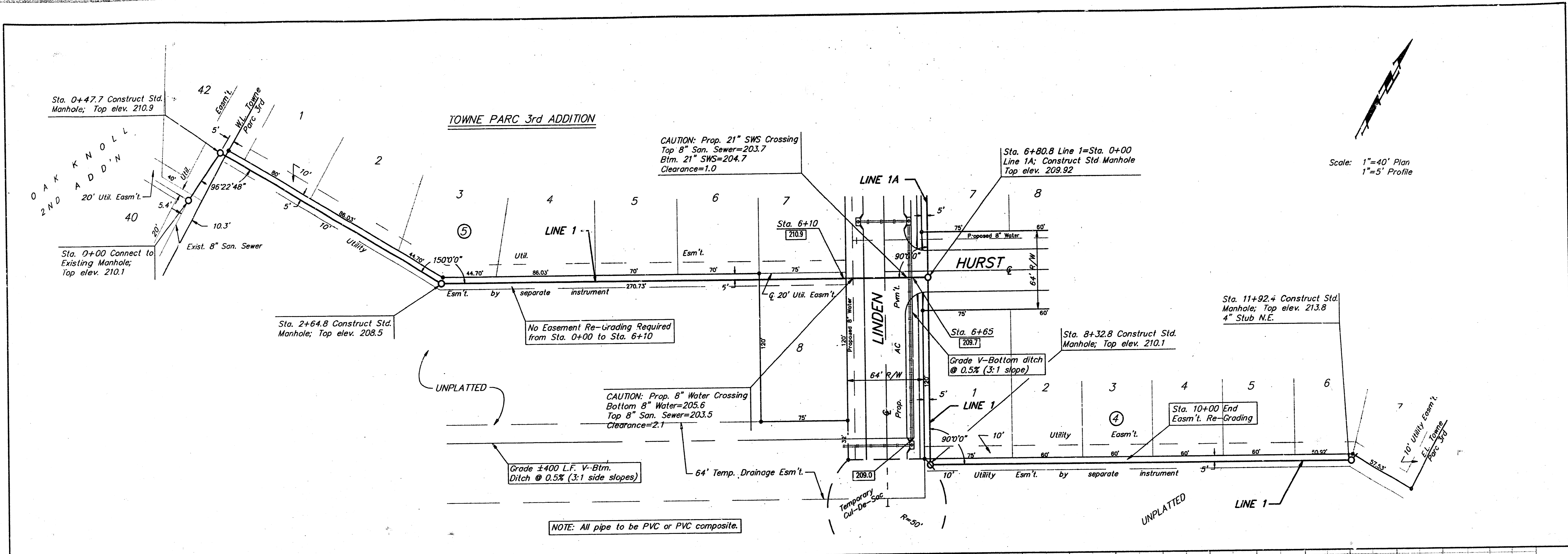
INDEX

- 1 - Title Sheet
- 2-3 - Plan/Profile
- 4 - Std. Manhole Detail



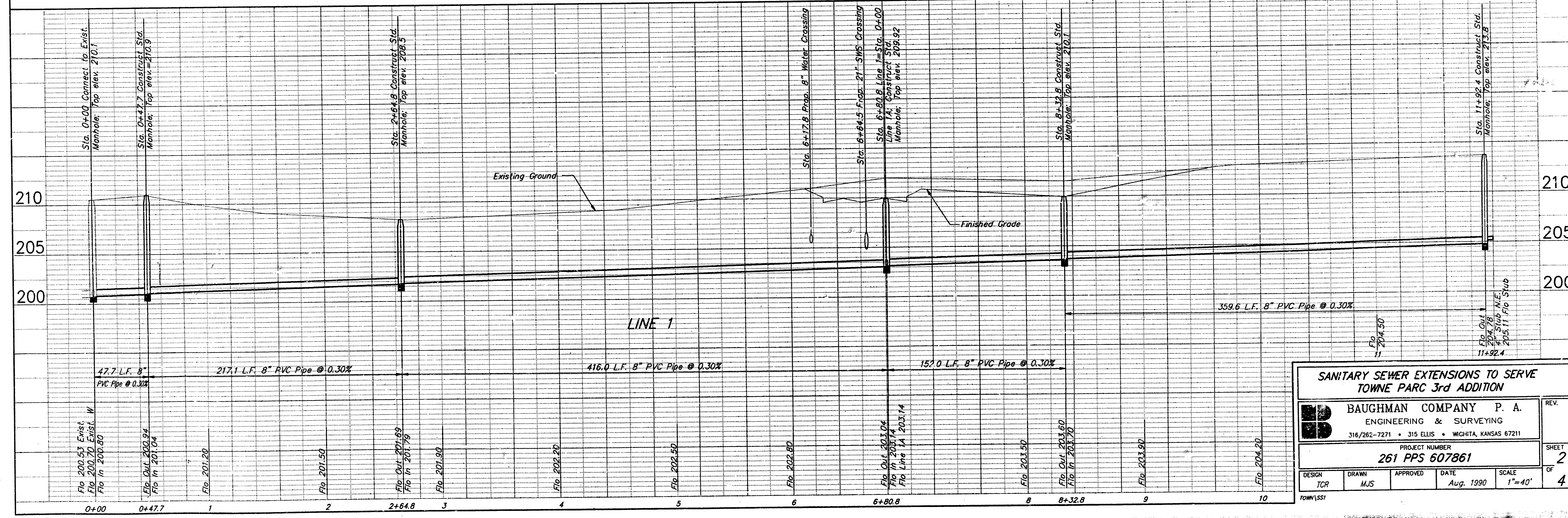
BAUGHMAN COMPANY P. A.
SURVEYING & ENGINEERING
318/262-7271 • 315 ELLIS • WICHITA, KANSAS 67211

FILMED FROM THE BEST
AVAILABLE COPY



Scale: 1"=40' Plan
1"=5' Profile

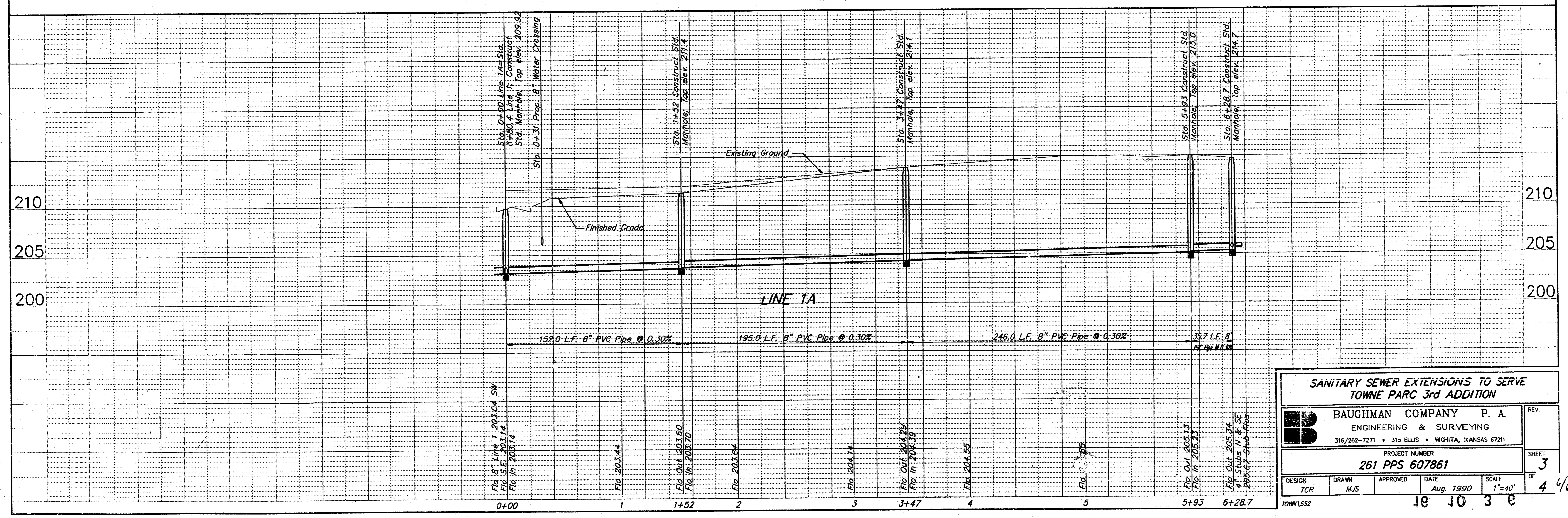
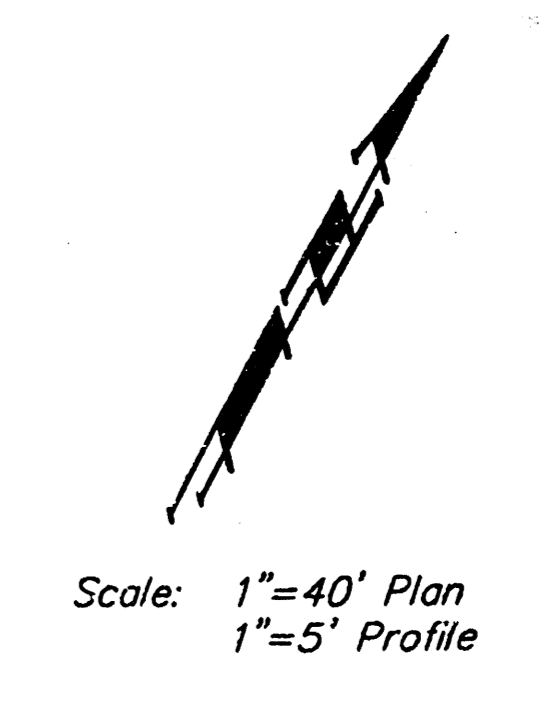
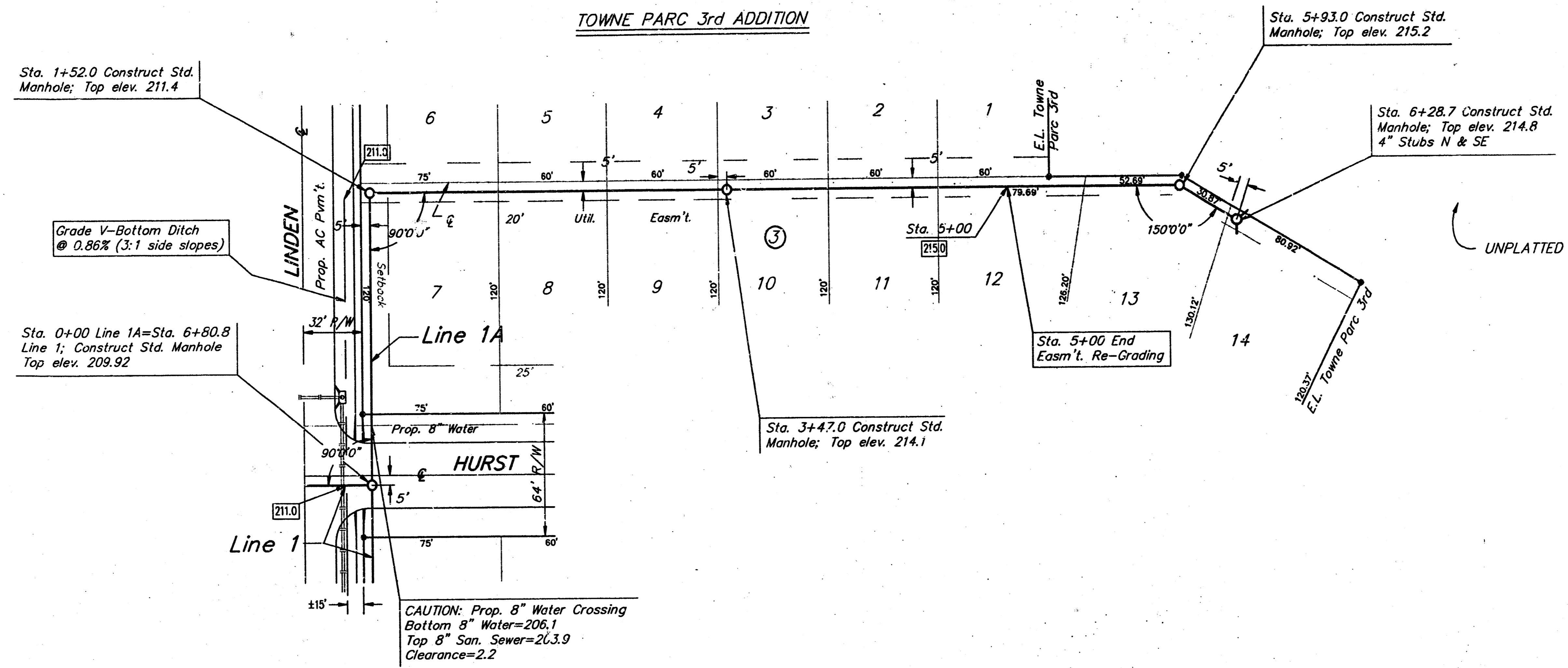
NOTE: All pipe to be PVC or PVC composite.



SANITARY SEWER EXTENSIONS TO SERVE TOWNE PARC 3rd ADDITION					
BAUGHMAN COMPANY P. A. ENGINEERING & SURVEYING 316/262-7271 • 315 ELLIS • WICHITA, KANSAS 67211					
PROJECT NUMBER 261 PPS 607861					
DESIGN TCR	DRAWN MJS	APPROVED	DATE Aug, 1990	SCALE 1"=40'	REV. 2
SHEET OF 4 5/6					

FILMED FROM THE BEST
AVAILABLE COPY

TOWNE PARC 3rd ADDITION



SANITARY SEWER EXTENSIONS TO SERVE TOWNE PARC 3rd ADDITION					
BAUGHMAN COMPANY P. A. ENGINEERING & SURVEYING 316/262-7271 • 315 ELLIS • WICHITA, KANSAS 67211					
PROJECT NUMBER 261 PPS 607861					
DESIGN	DRAWN	APPROVED	DATE	SCALE	REV.
TCR	MJS		Aug. 1990	1"=40'	3
TOWN\SS2					4

FILMED FROM THE BEST AVAILABLE COPY