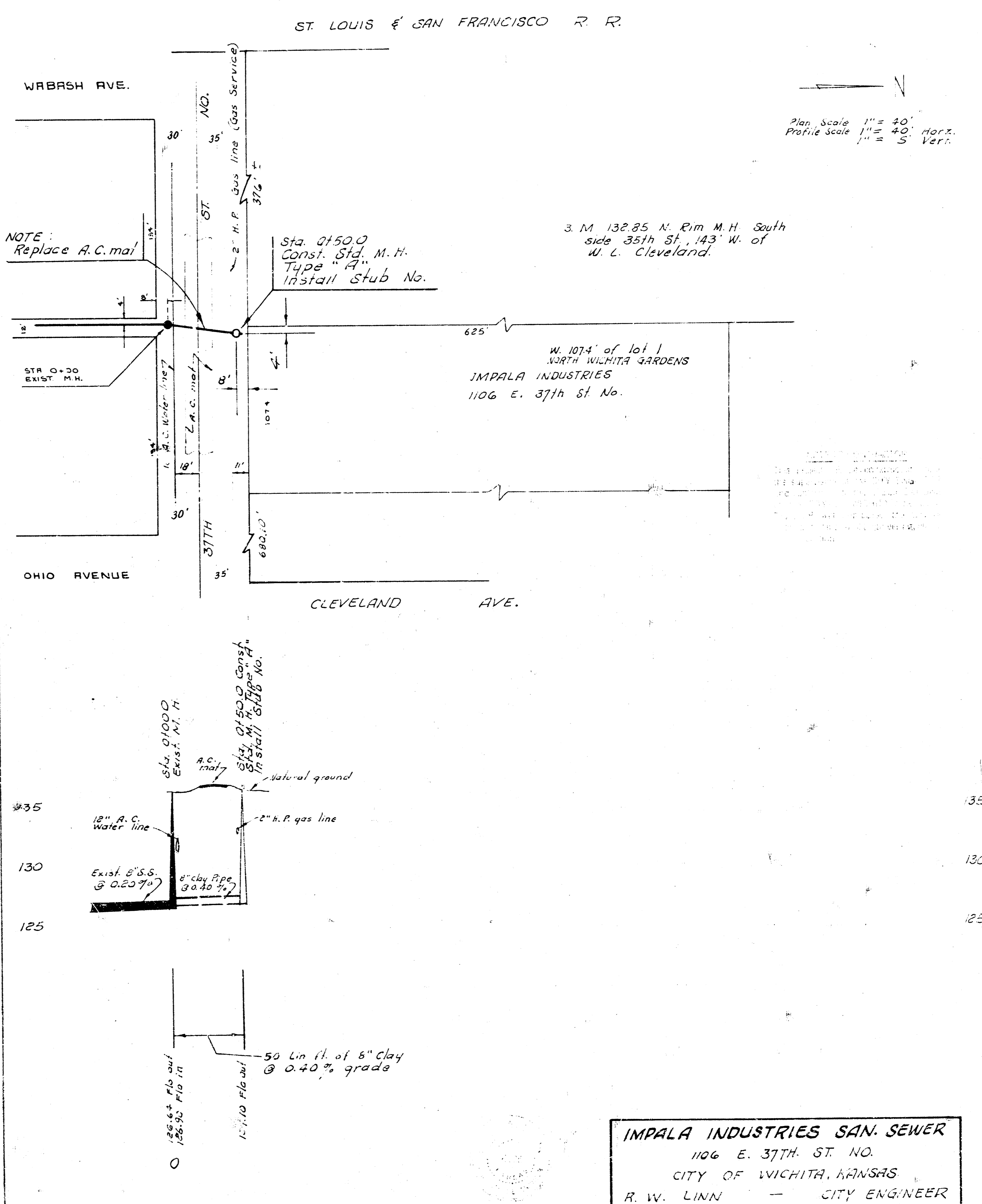


TOWNSEND PROPERTIES SAN. SEWER
 TOWNSEND SECOND ADDITION
 CITY OF WICHITA, KANSAS
 R. W. LINN — CITY ENGINEER
 FEB. 1972 PRIVATE CONTRACT



IMPALA INDUSTRIES SAN. SEWER
 1106 E. 37TH ST. NO.
 CITY OF WICHITA, KANSAS
 R. W. LINN — CITY ENGINEER
 APRIL 1972 PRIVATE CONTRACT
 A.A.K.B502001

