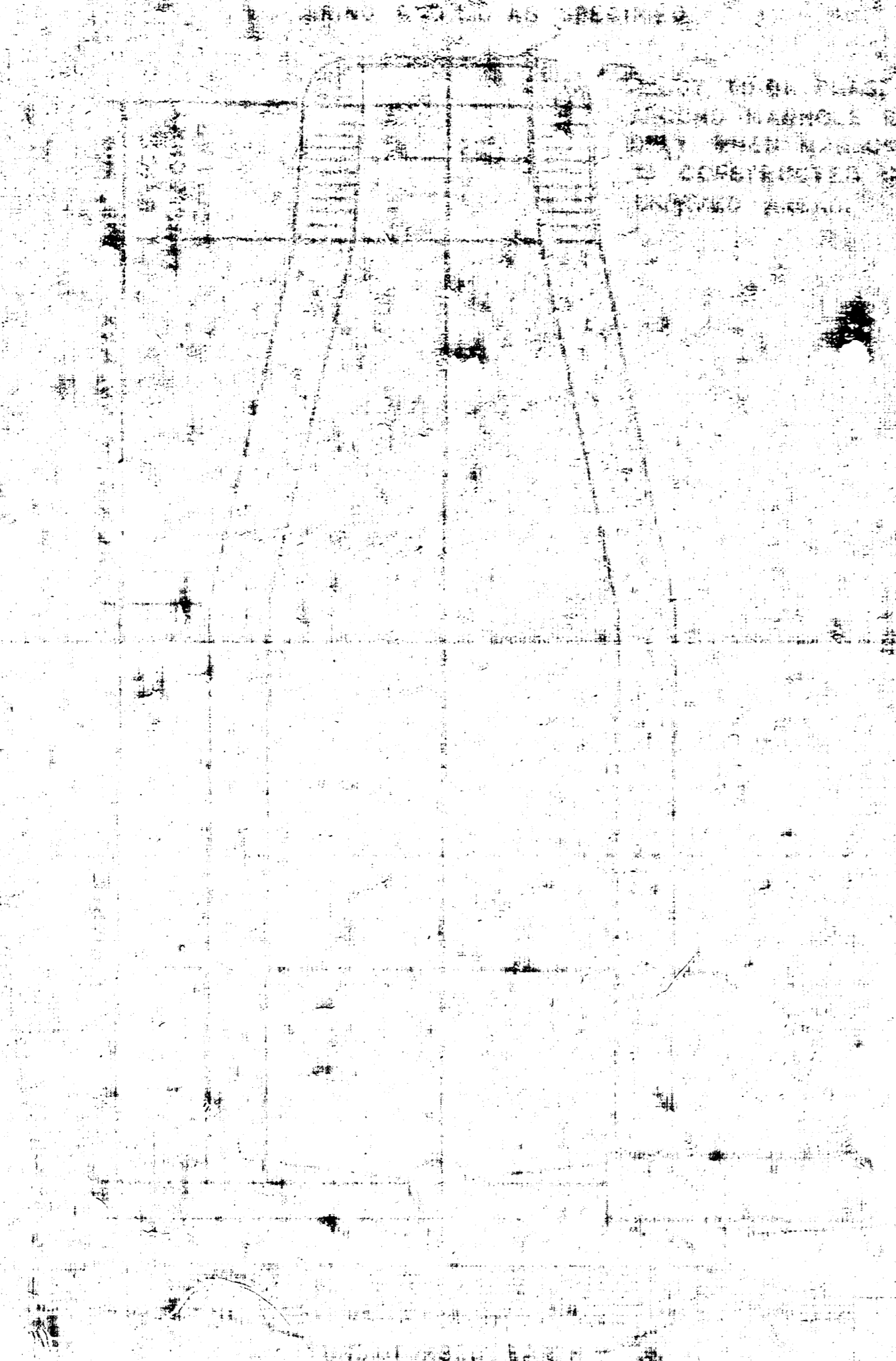
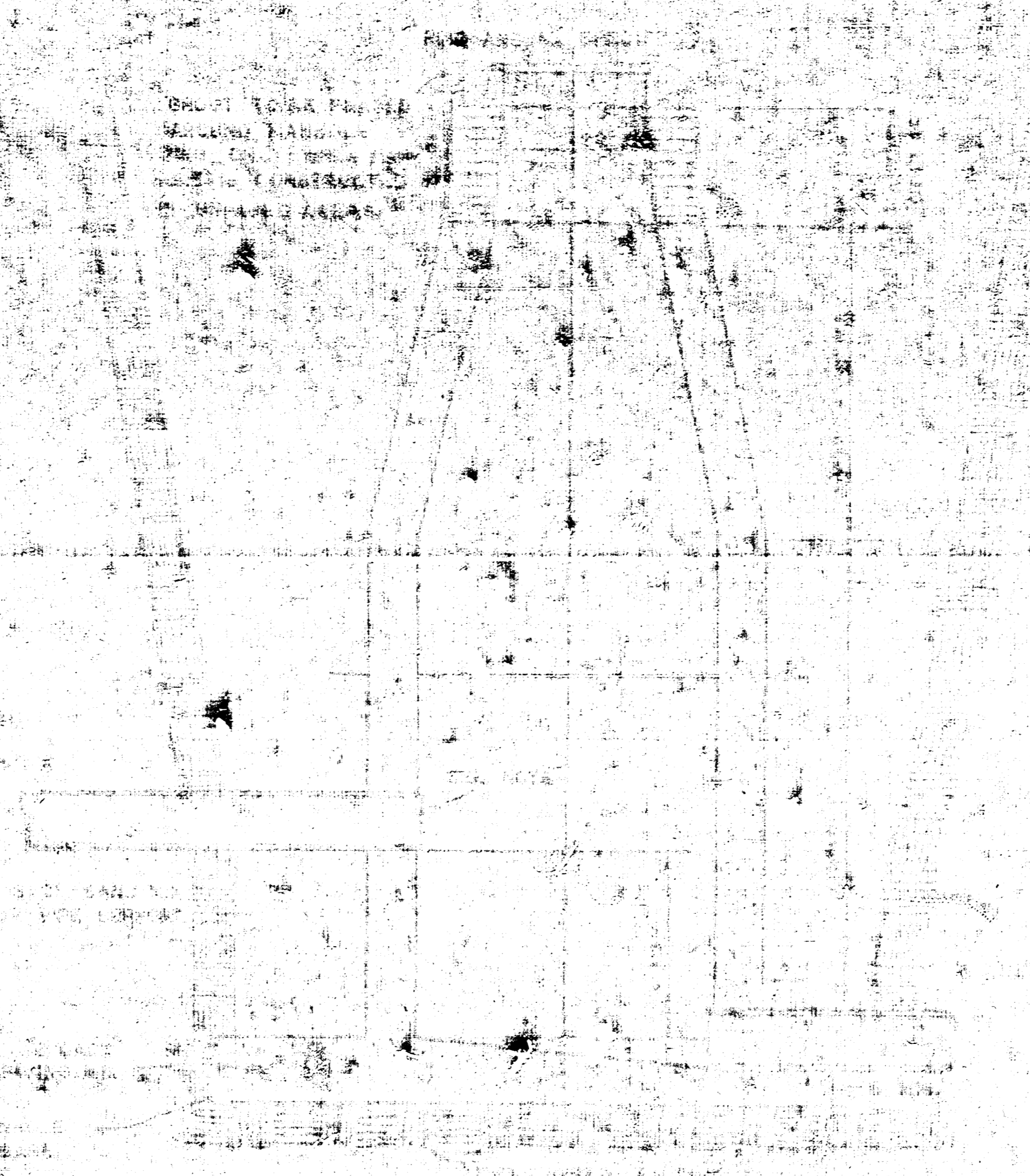


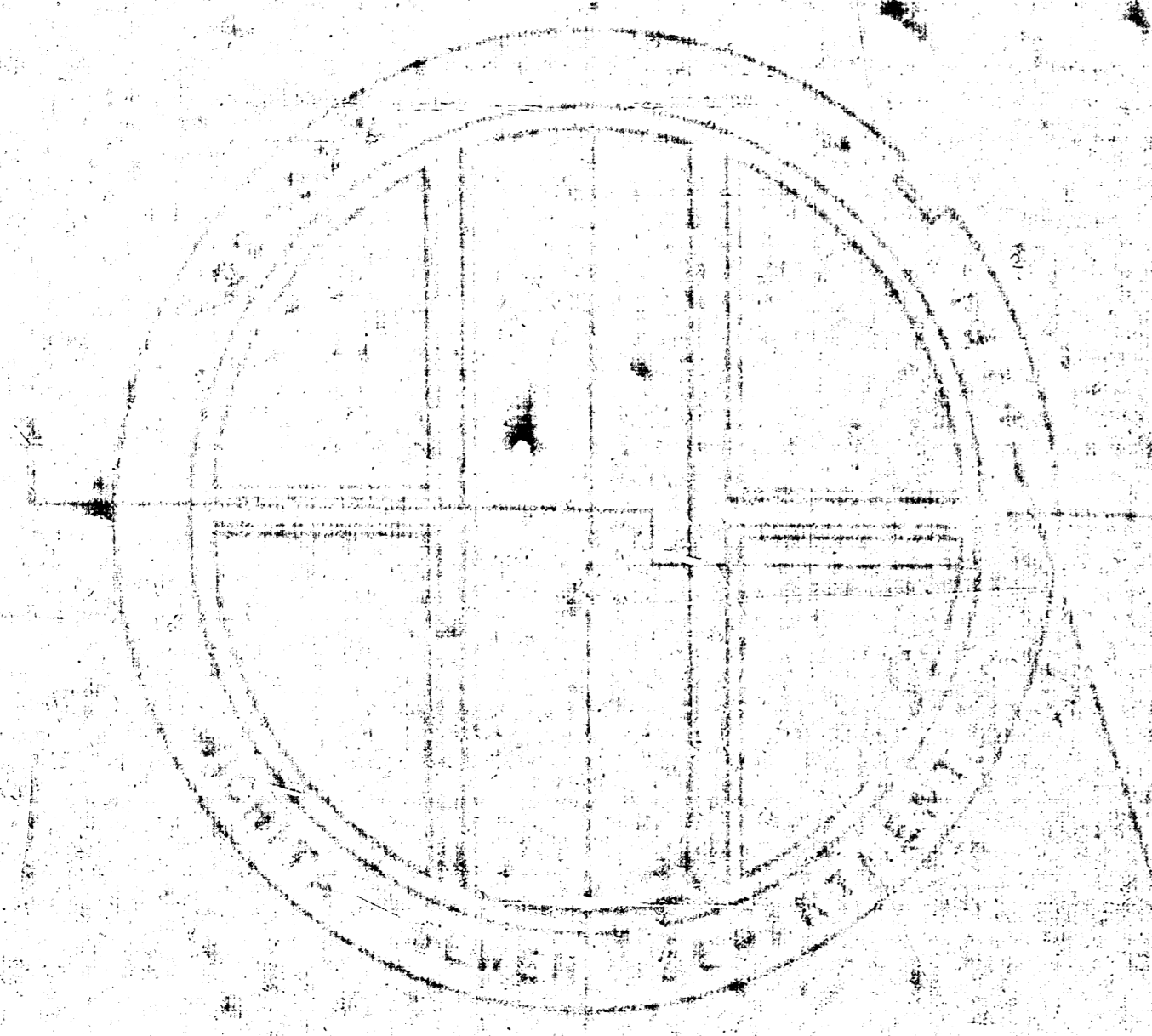
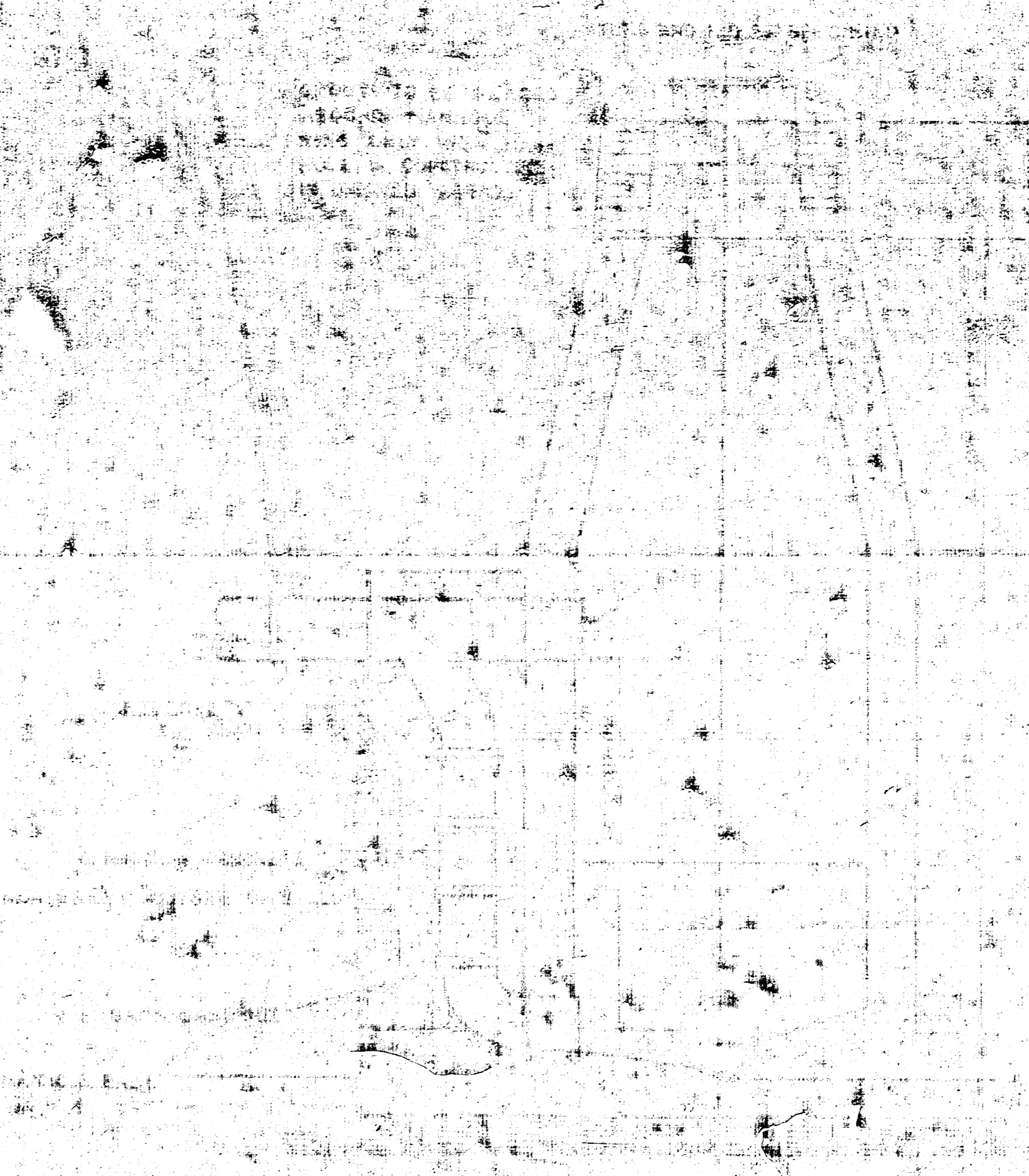
STANDARD MANHOLE, TYPE "C"



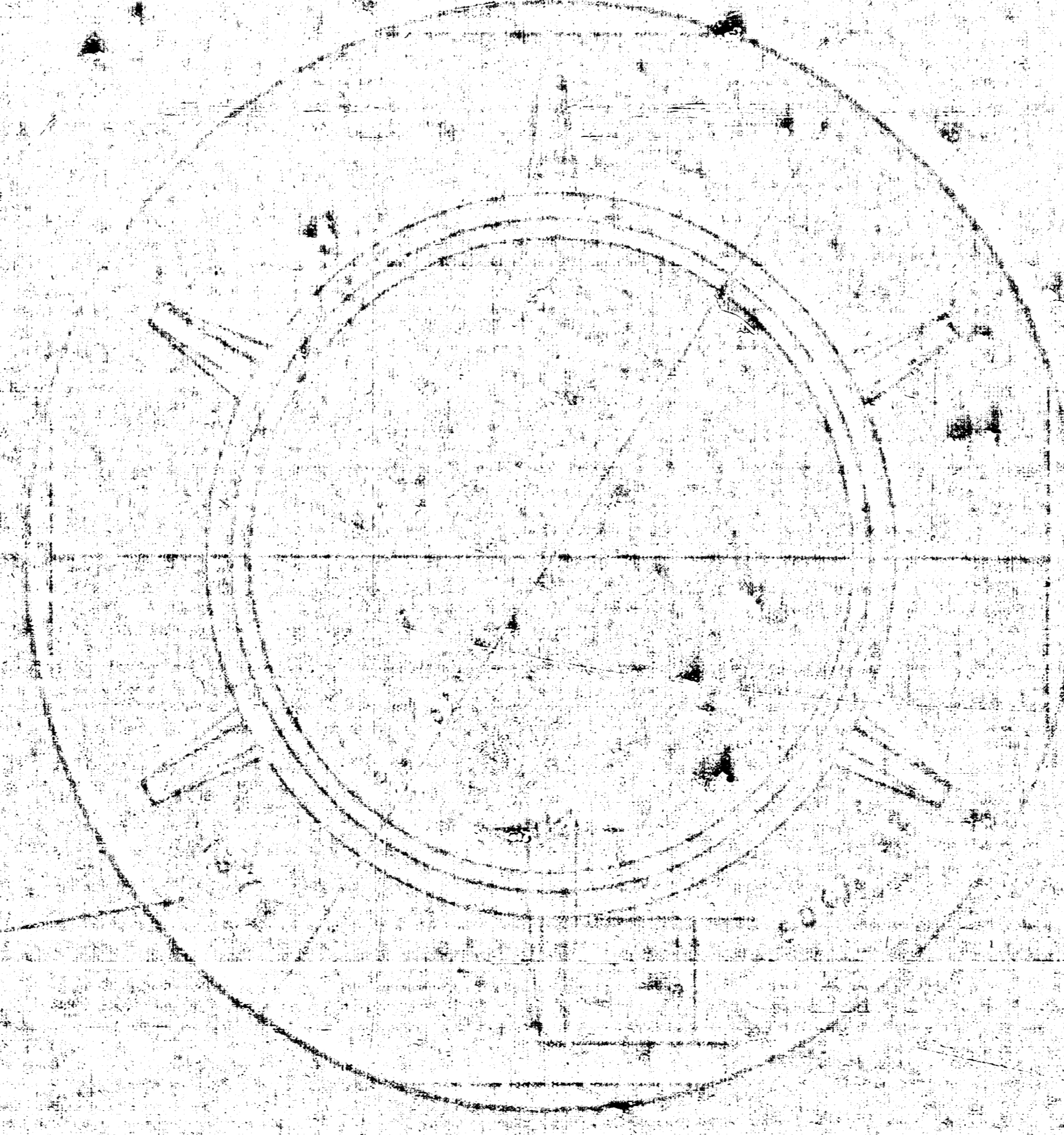
DROP MANHOLE, TYPE "C"



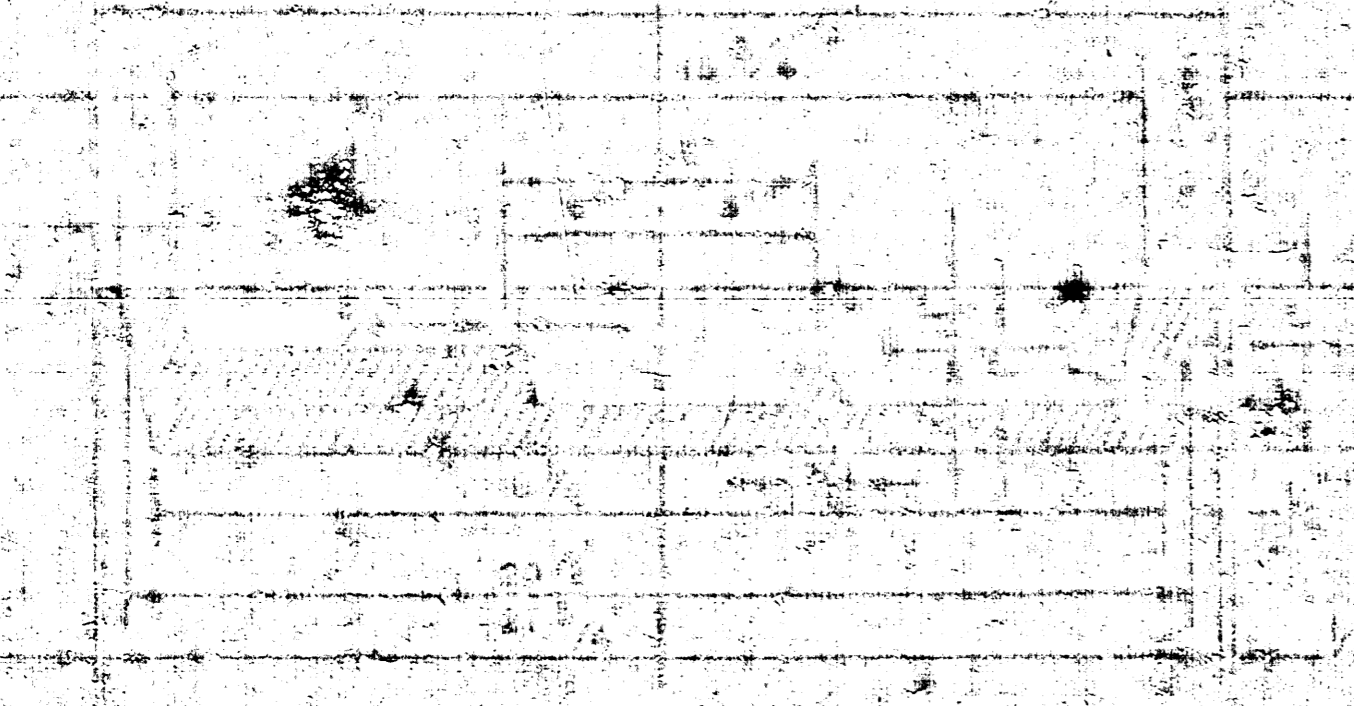
OUTSIDE DROP MANHOLE, TYPE "C"



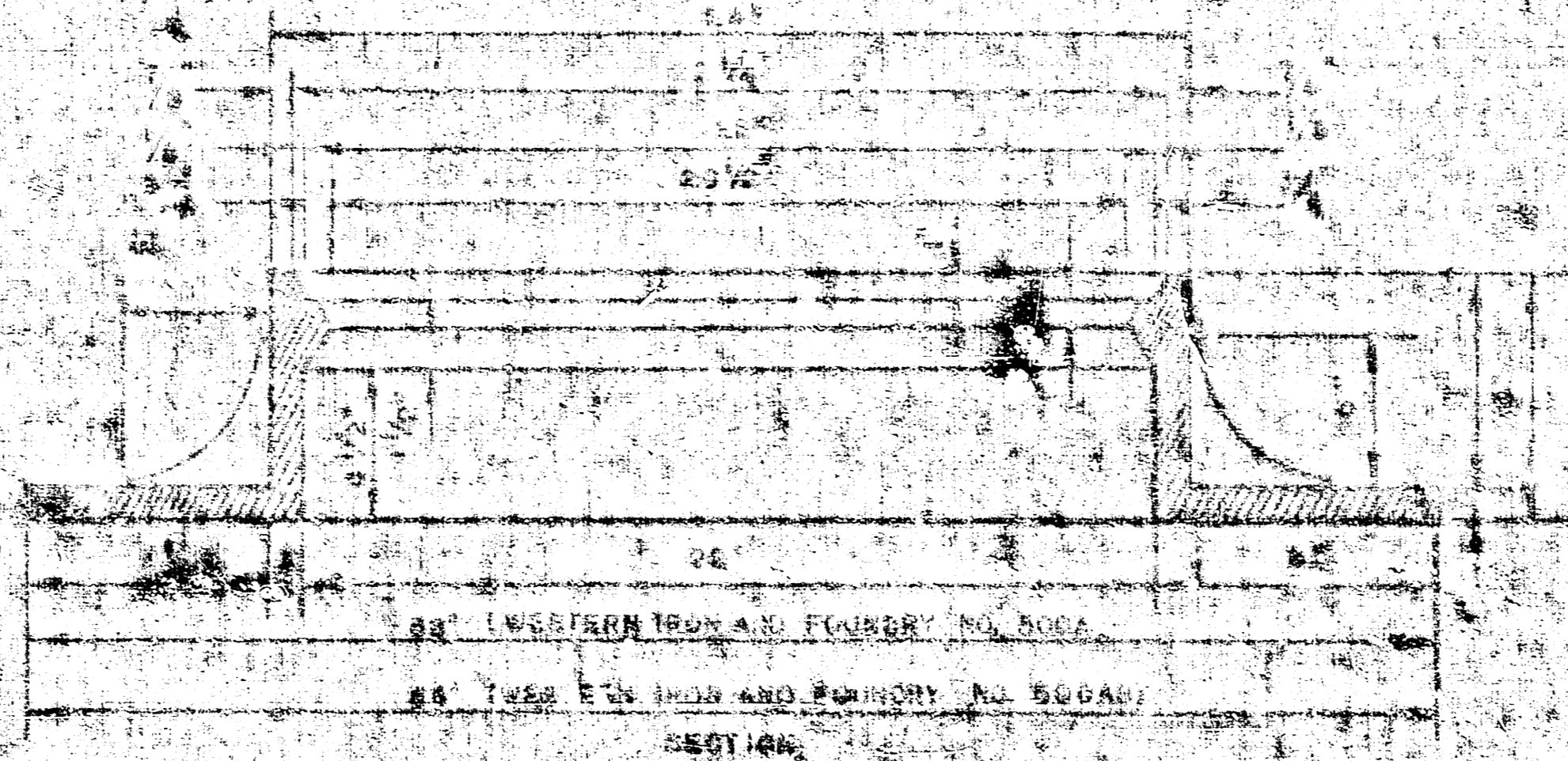
MANHOLE COVER



MANHOLE RING



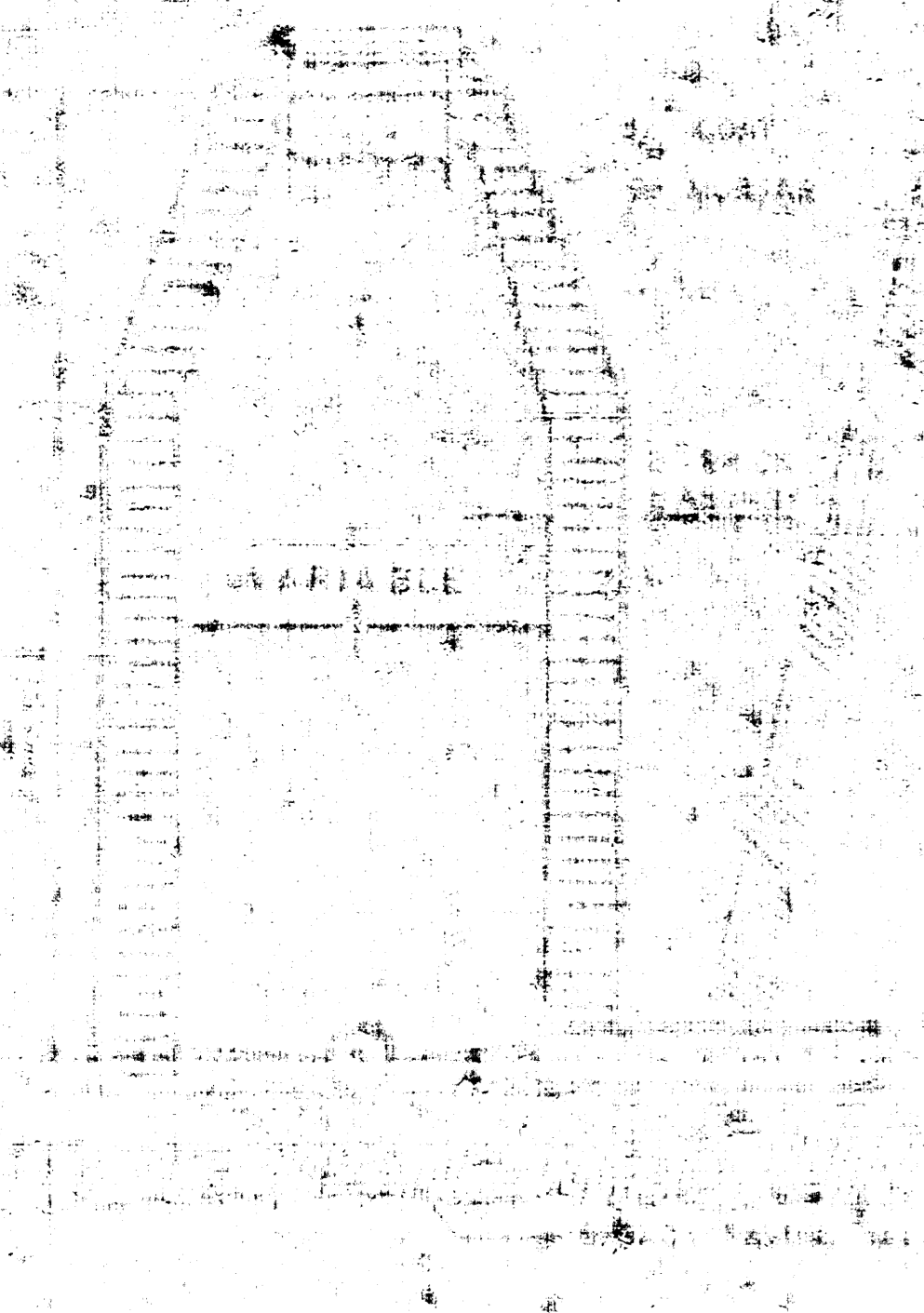
MANHOLE COVER



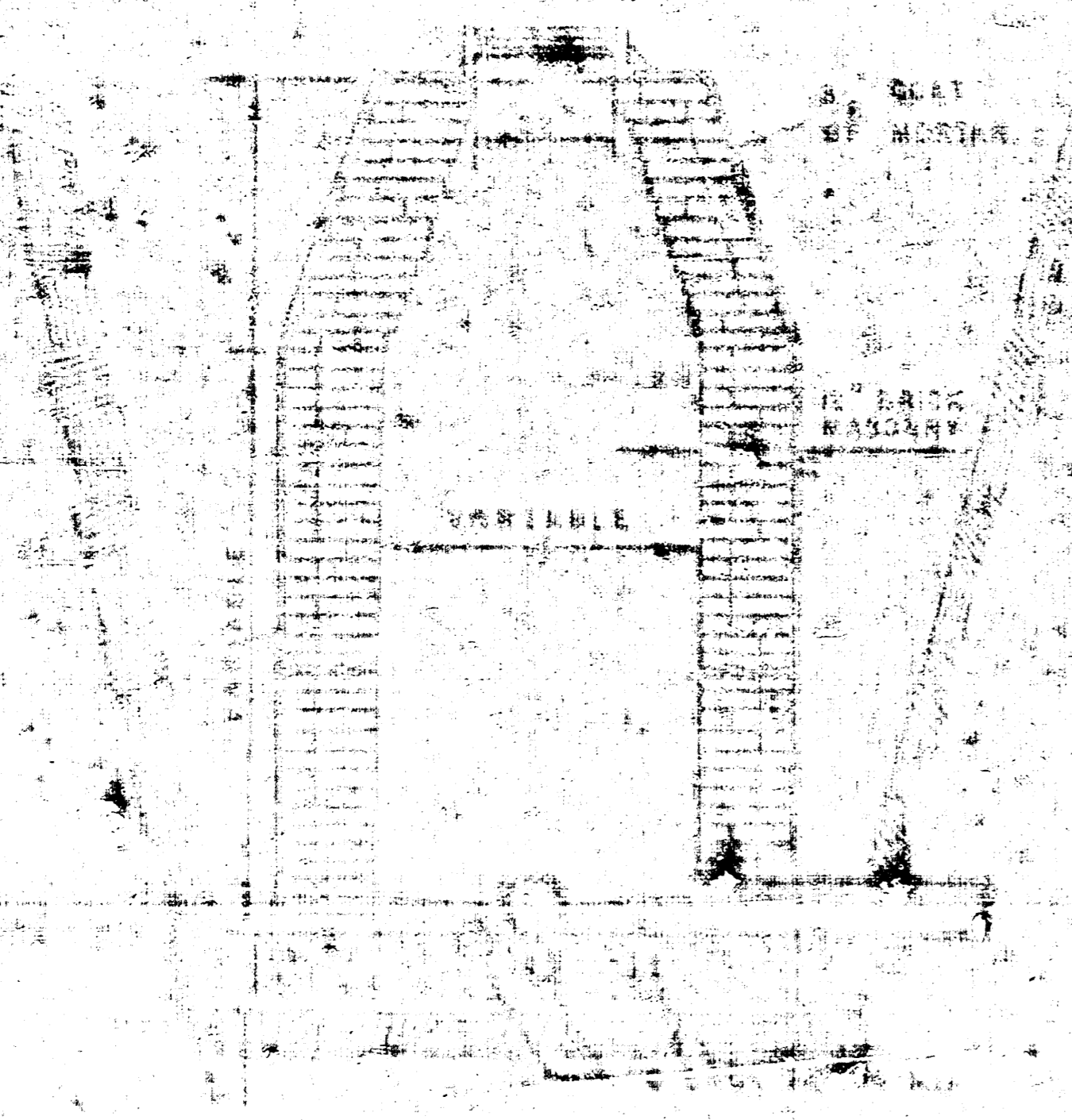
MANHOLE RING

NOTES: 1. REFER TO THE CITY OF WICHITA SPECIFICATIONS FOR THE MANHOLE COVER AND RING. 2. THE MANHOLE COVER AND RING SHALL BE CAST IN PLACE WITH A FINISHING GRIT. 3. THE COVER AND RING SHALL BE CONNECTED TO THE SEWER PIPE WITH AN APPROVED JOINT.

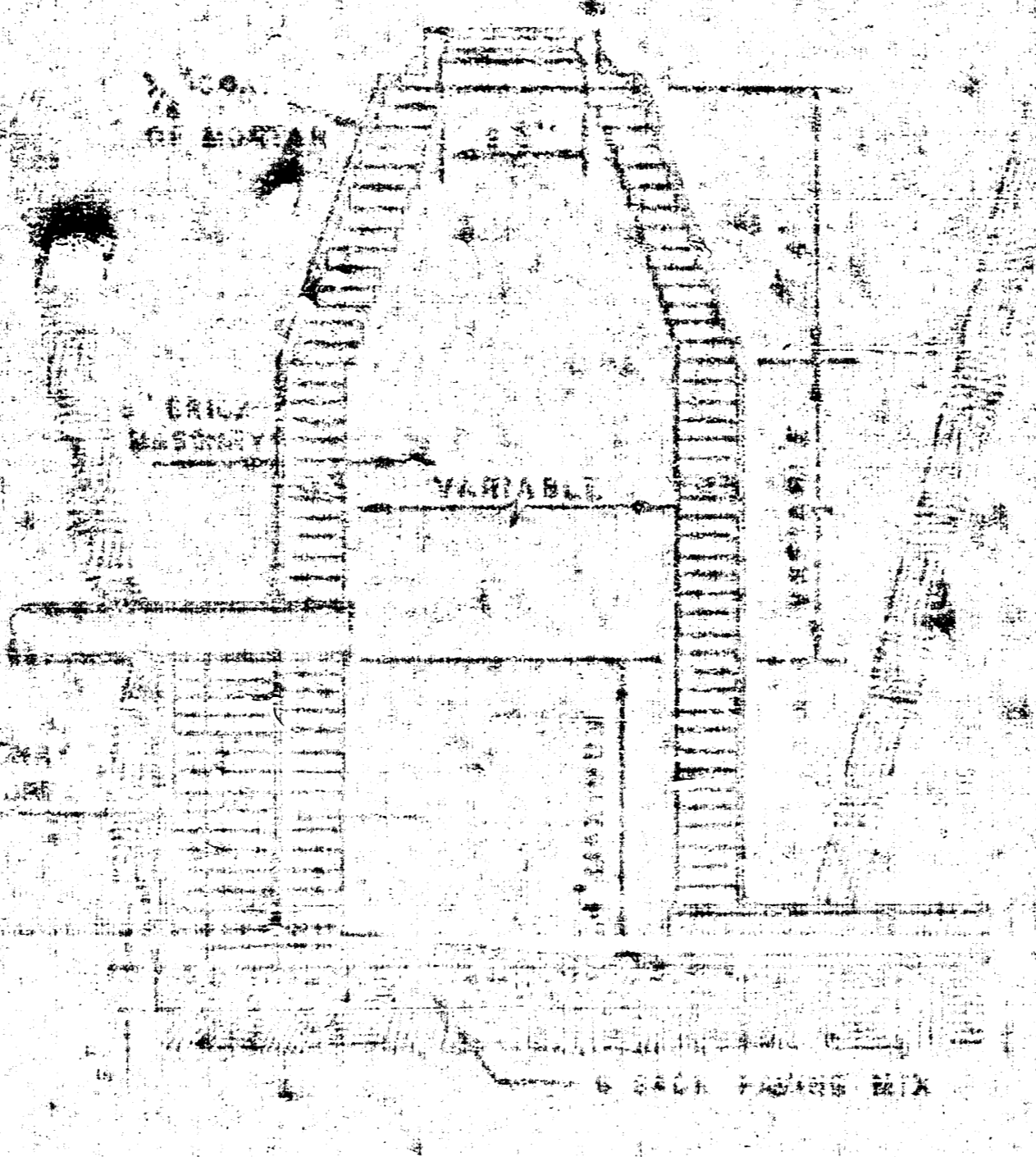
DETAILS OF SEWER APPURTENANCE  
 ADOPTED AS STANDARD DESIGN  
 BY  
 ENGINEERING DIVISION  
 CITY OF WICHITA, KANSAS  
 R. W. LIME, CITY ENGINEER  
 1974



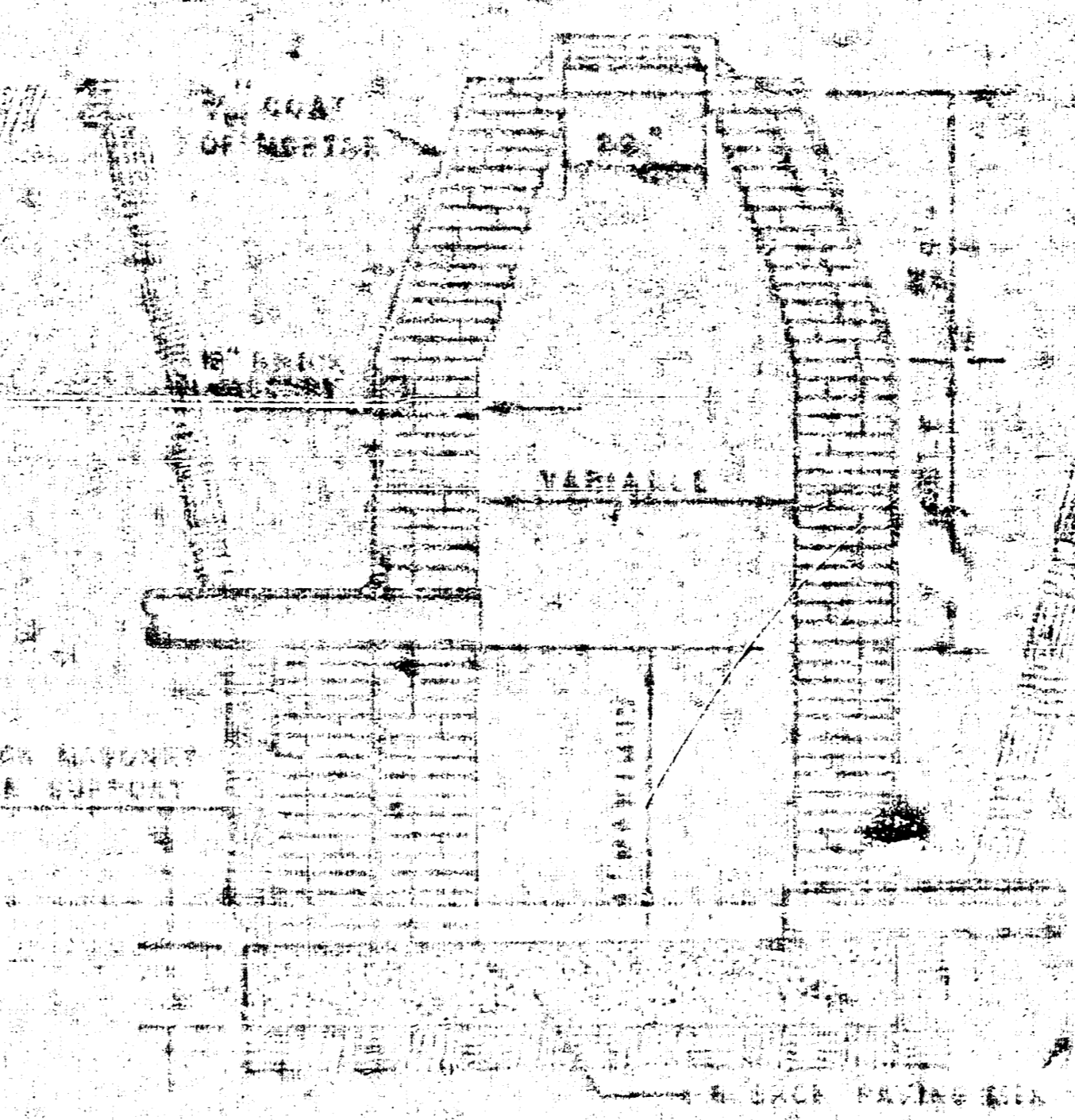
STANDARD MANHOLE TYPE "A"



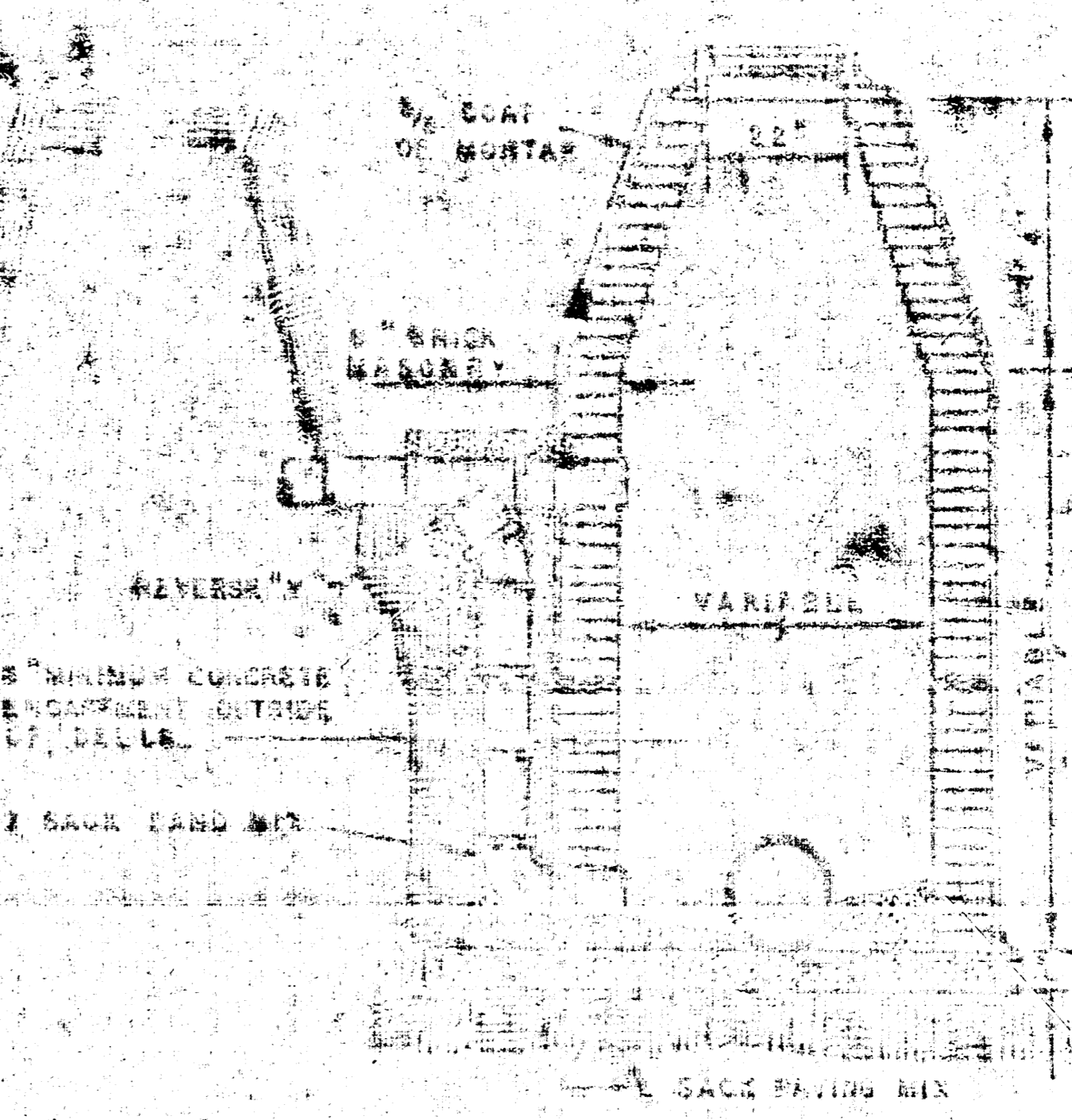
STANDARD MANHOLE TYPE "B"



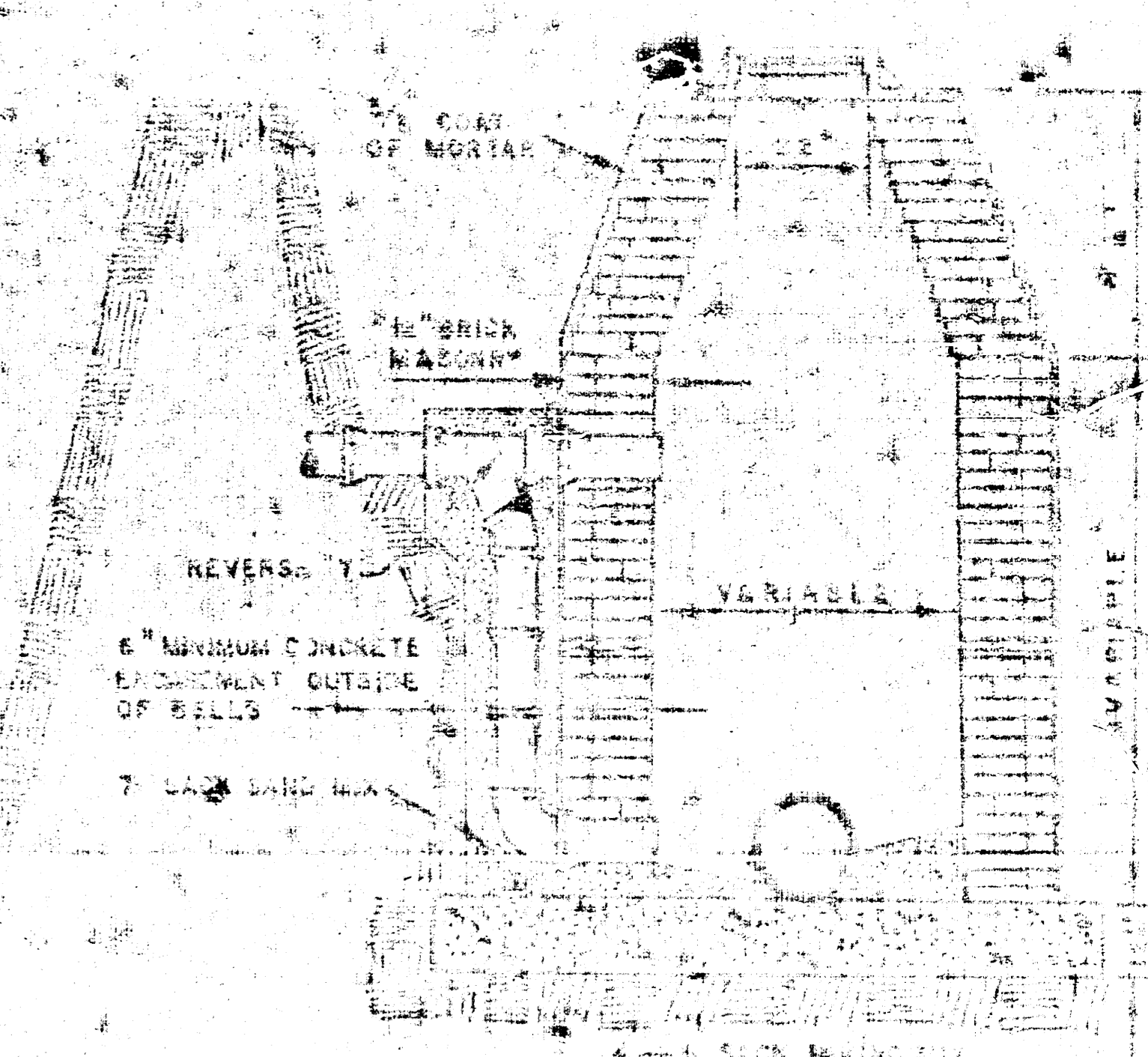
DROP MANHOLE TYPE "A"



DROP MANHOLE TYPE "B"

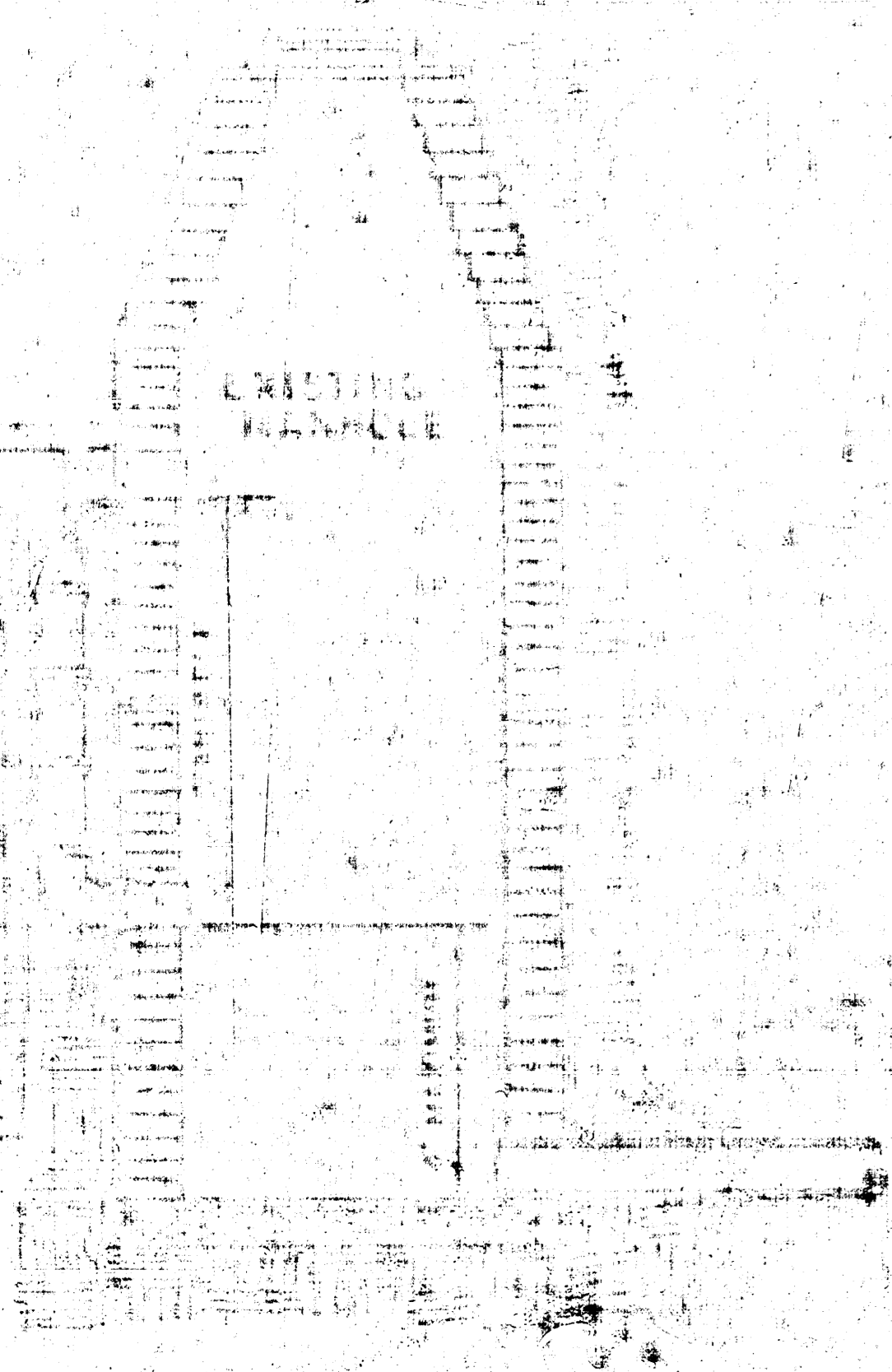


OUTSIDE DROP MANHOLE TYPE "A"

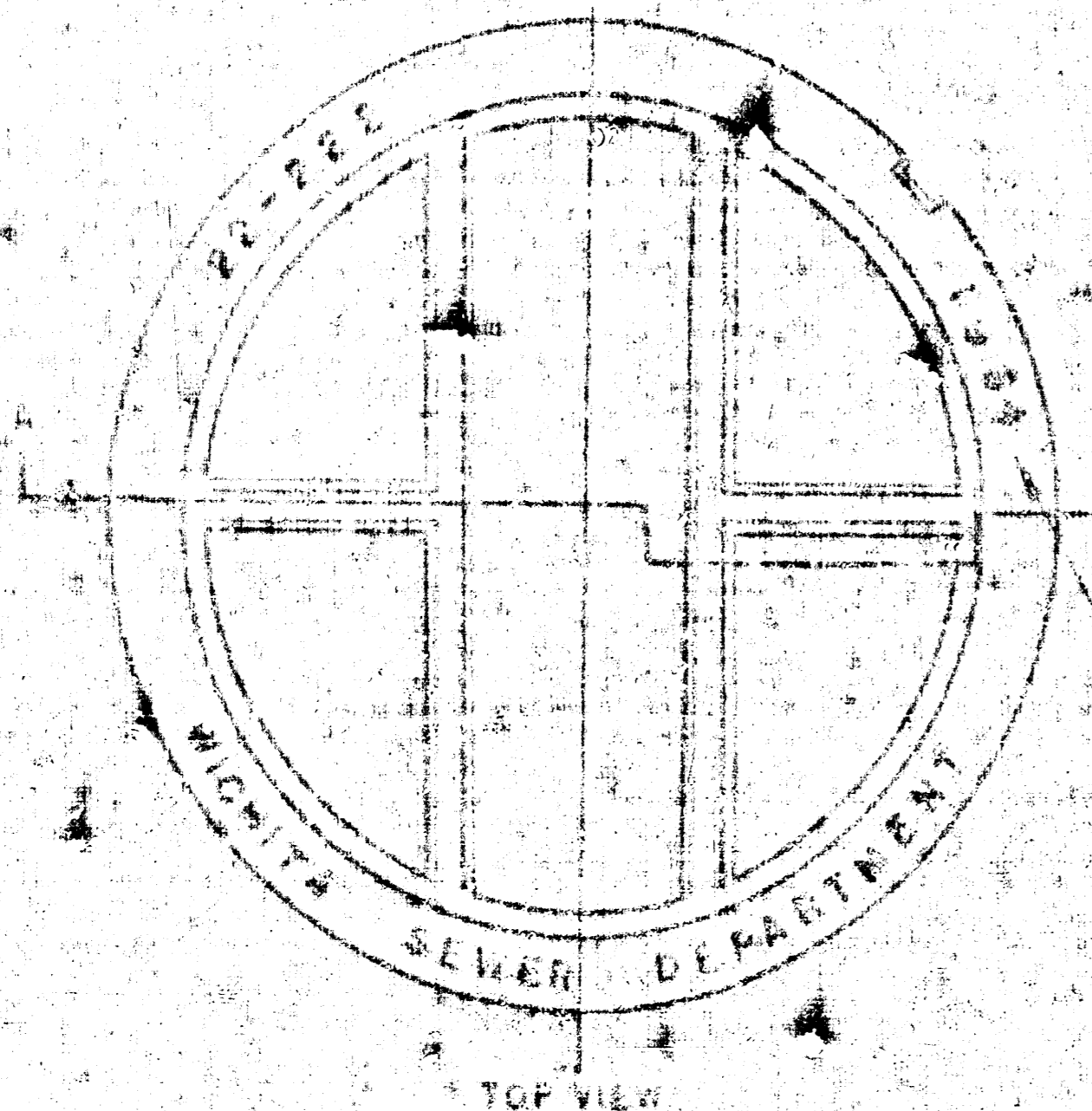


OUTSIDE DROP MANHOLE TYPE "B"

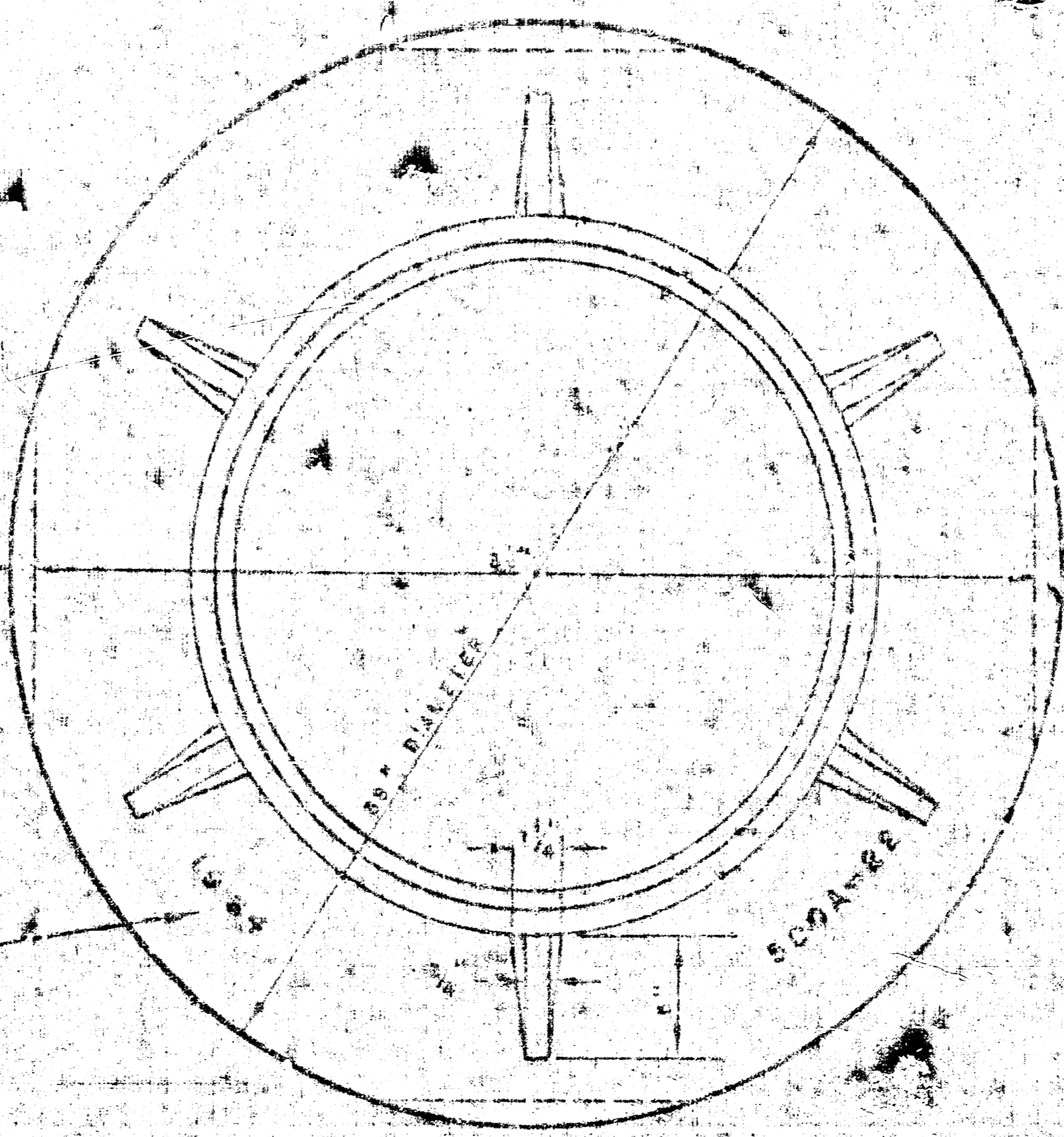
DRAWN UP ON 0-10-11-11



DETAIL OF DROP STACK FOR EXISTING MANHOLES IN CUTTING WATER

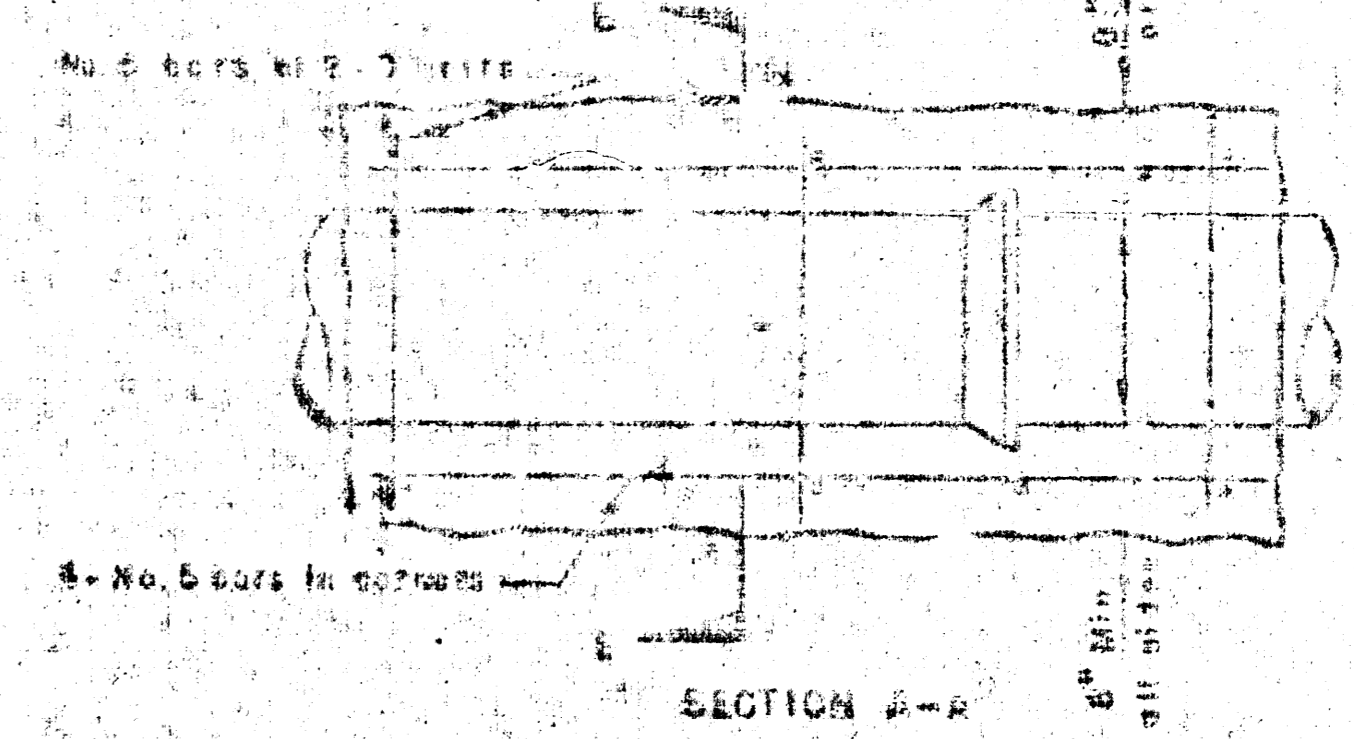


MANHOLE COVER WEIGHT 125 lbs.

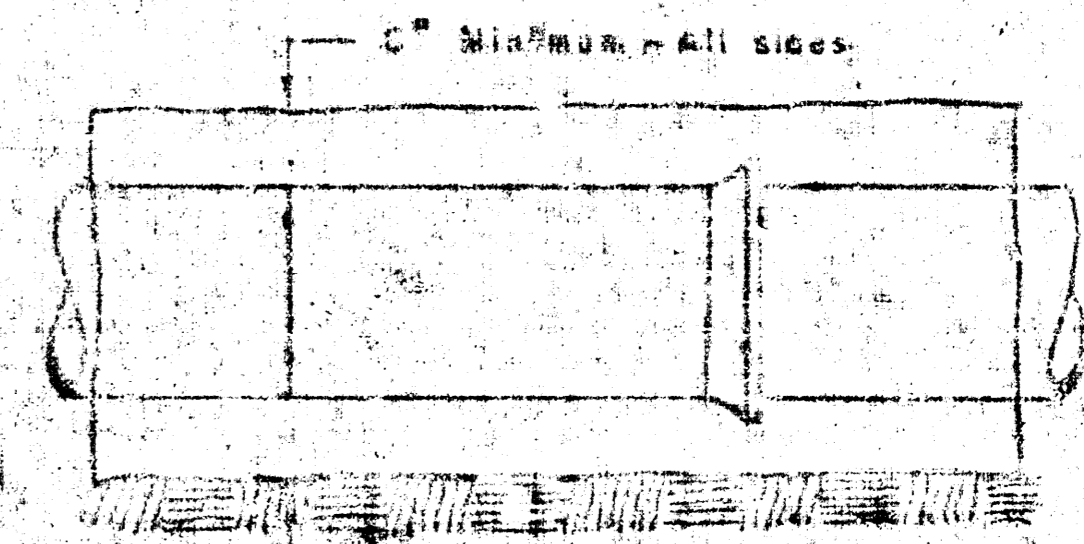
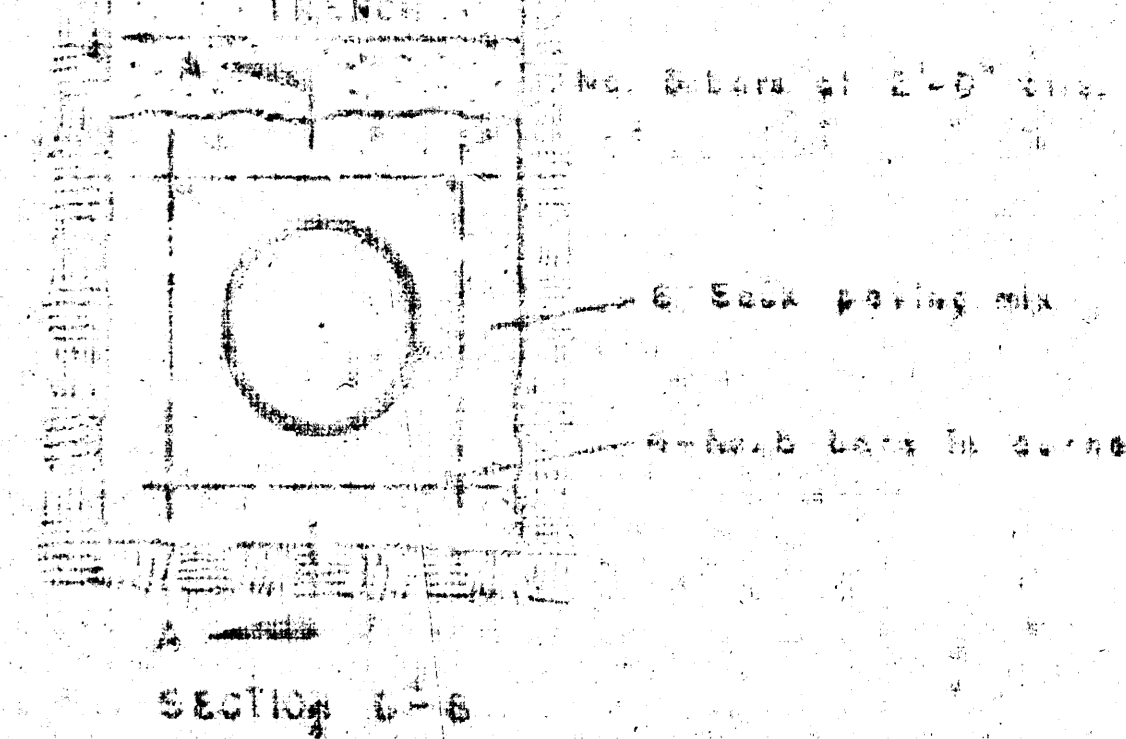


MANHOLE RING WEIGHT 305 lbs.

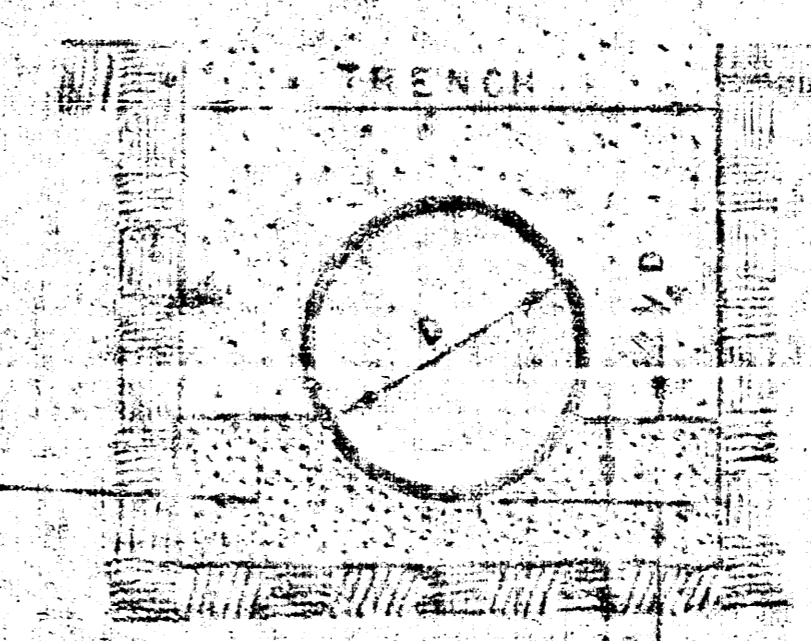
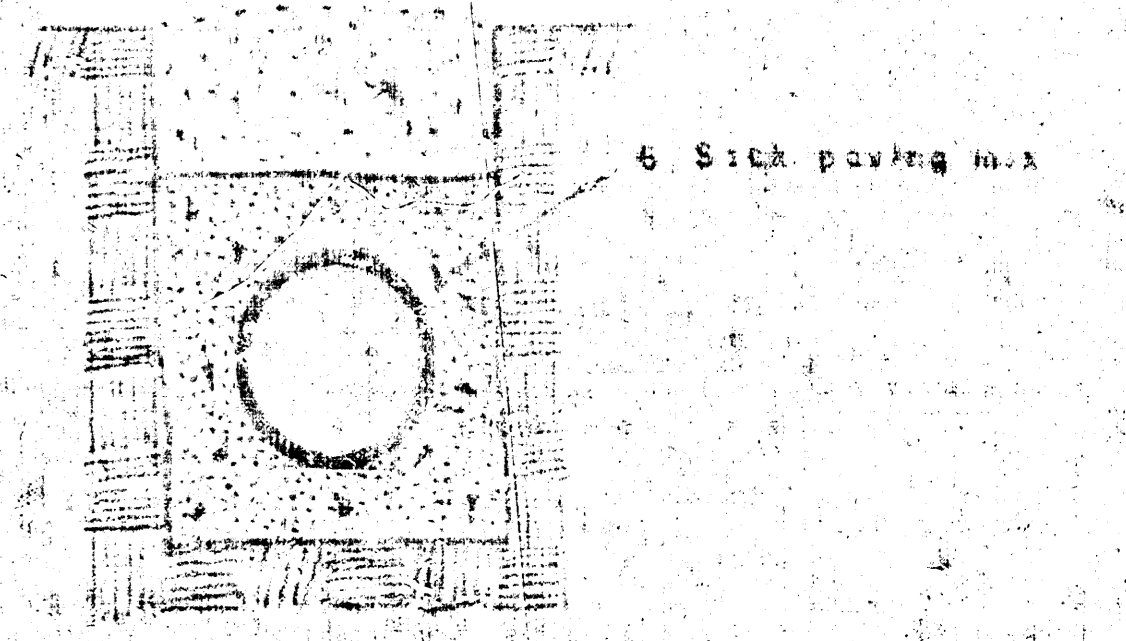
YEAR CASTING IS MADE



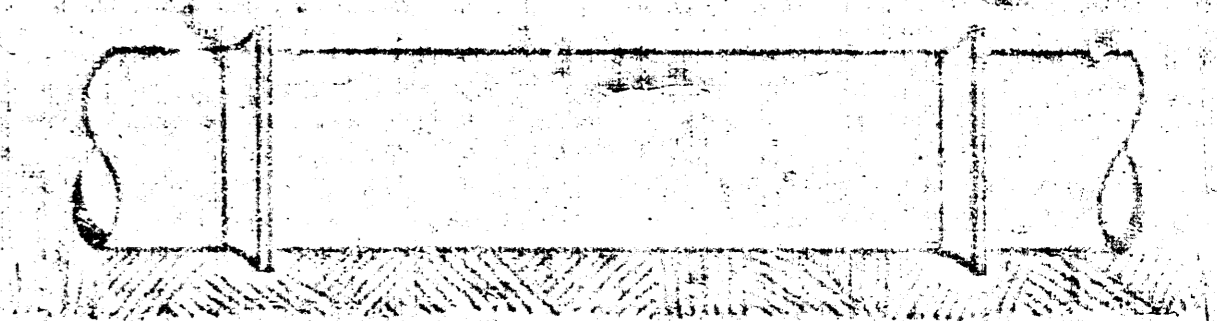
REINFORCED CONCRETE ENCASUREMENT FOR STRENGTH



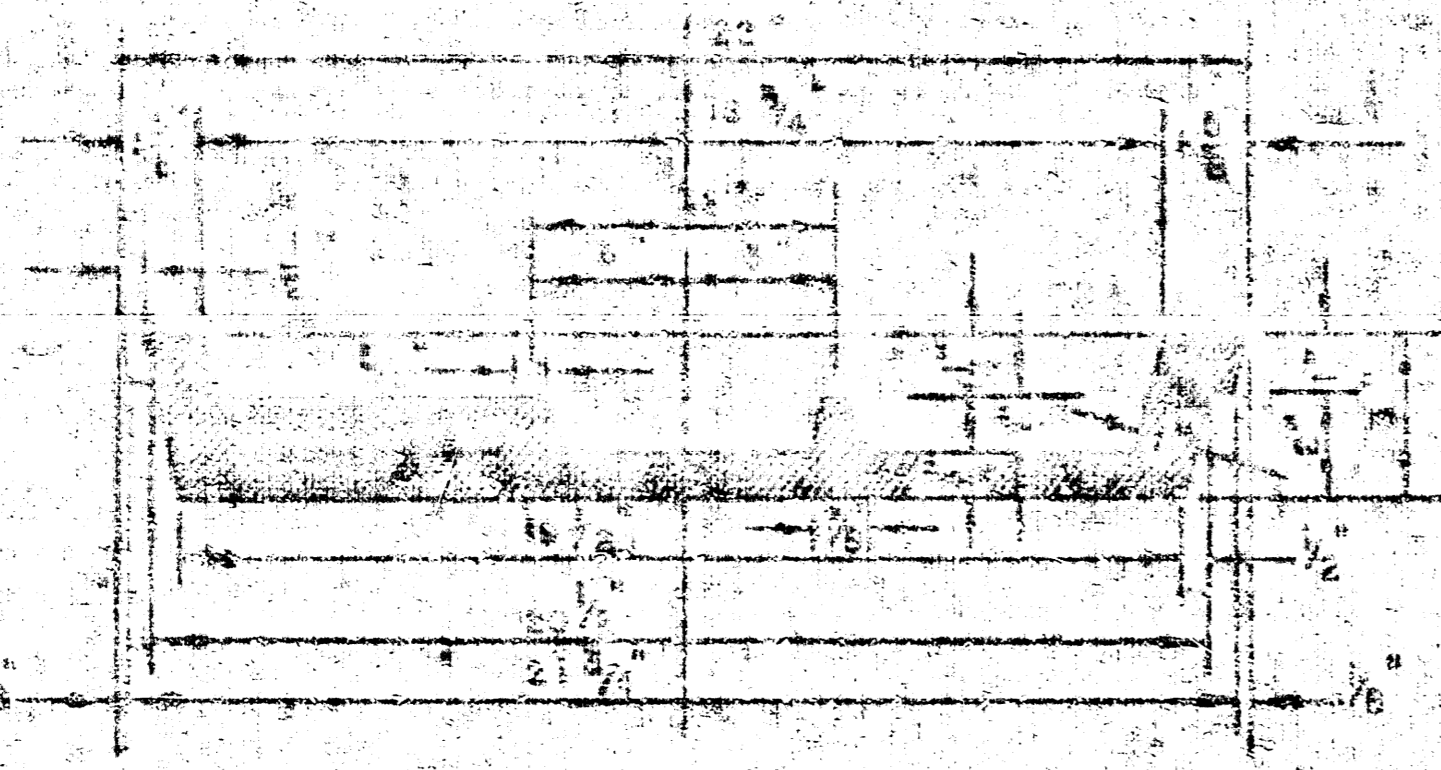
CONCRETE ENCASUREMENT FOR COVER



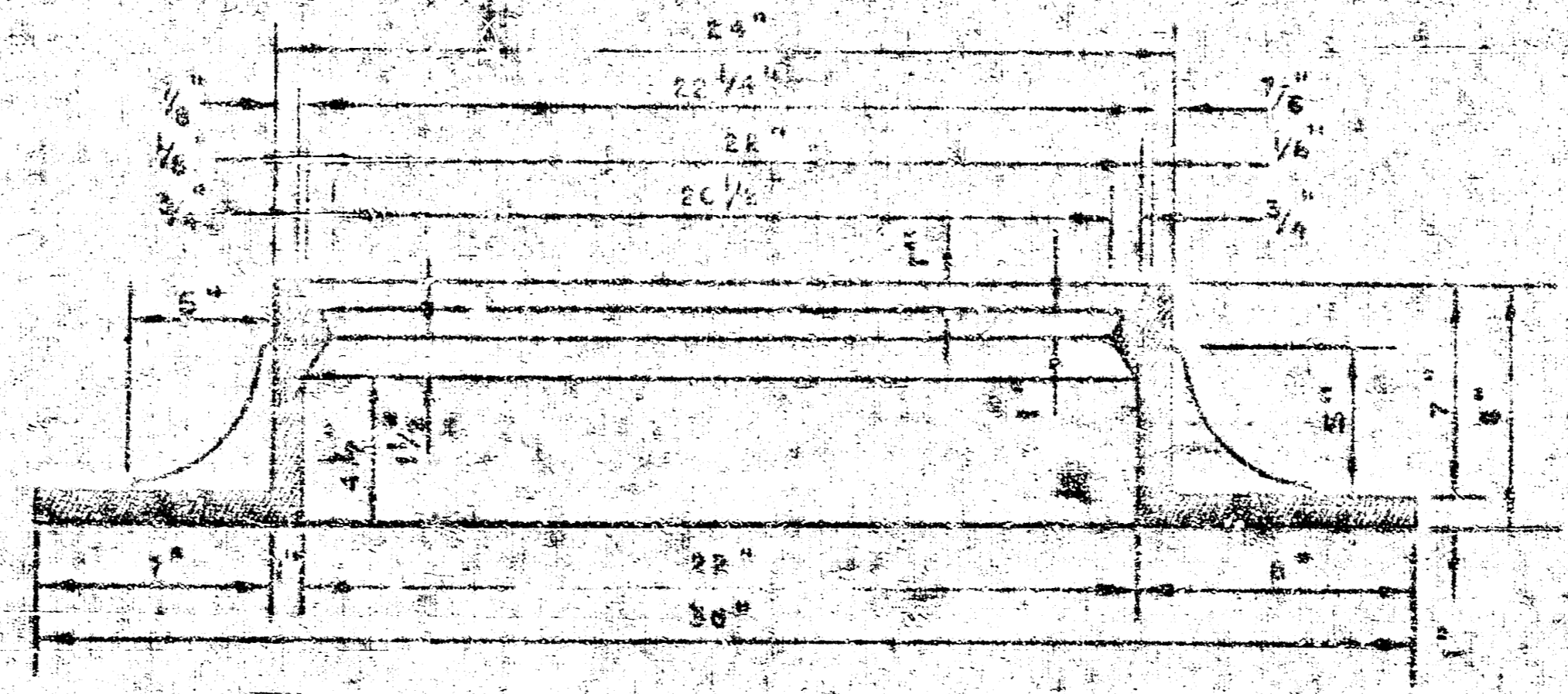
DETAIL OF CONCRETE CRADLE



ORDINARY BEDDING METHOD FOR CLAY PIPE

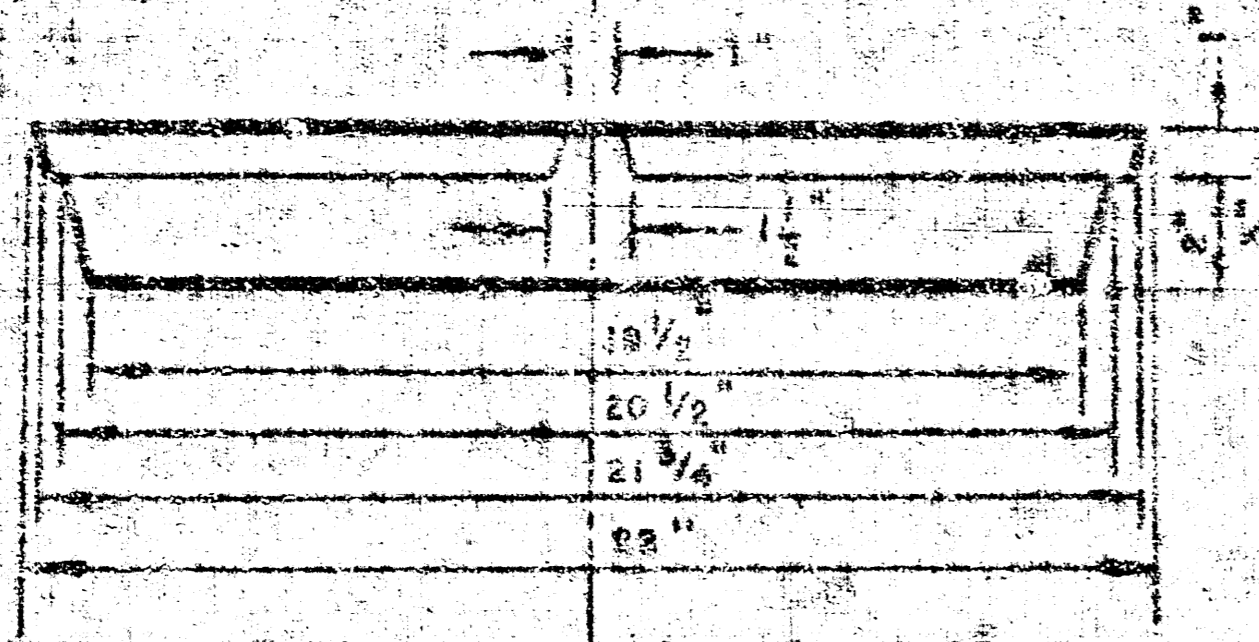


MANHOLE COVER

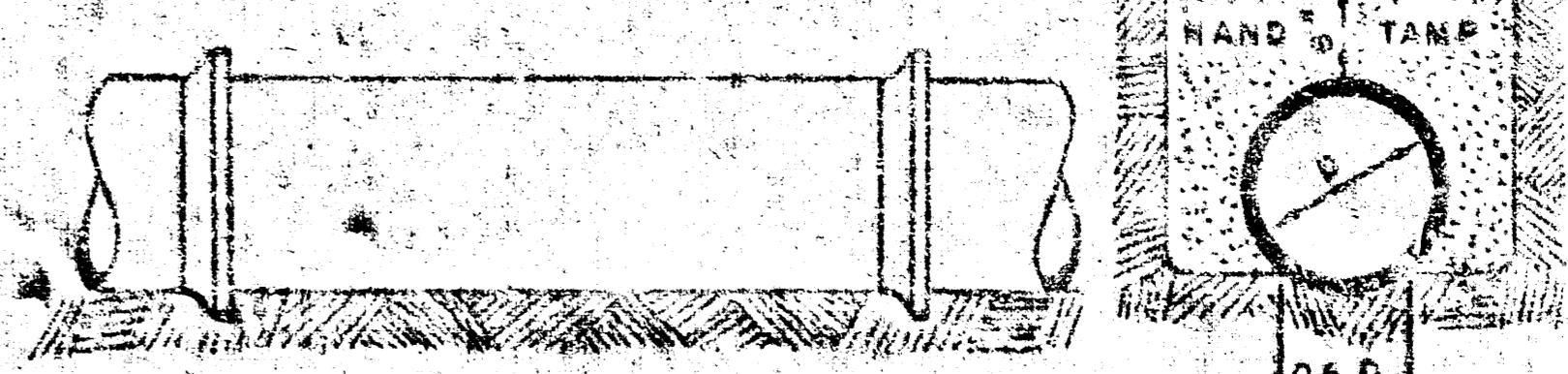


MANHOLE RING

OUTSIDE CIRCUMFERENCE OF COVER AND THE INNER FACE AND CENT OF RING TO BE MACHINE FIT.



MANHOLE COVER



ORDINARY BEDDING METHOD FOR REINFORCED CONCRETE PIPE

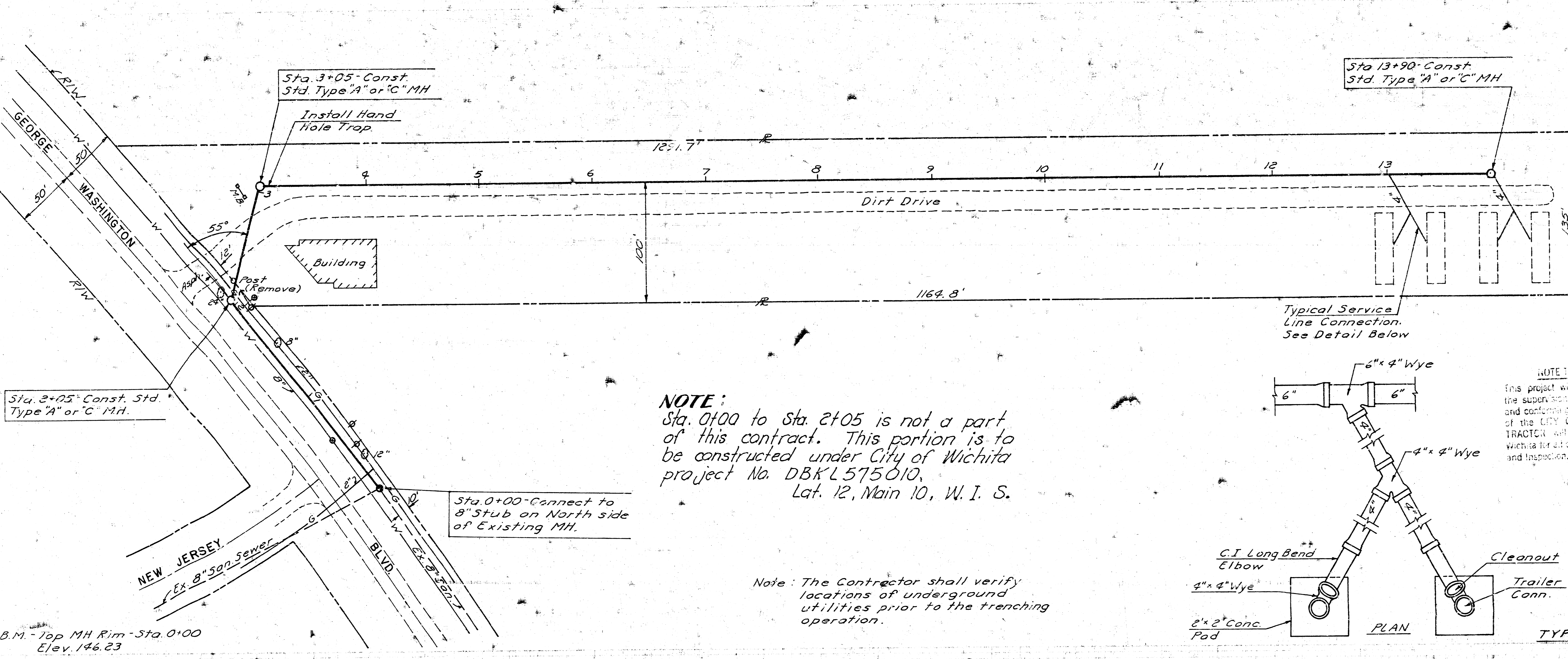
**MANHOLES**  
 THE CONCRETE USED FOR MORTAR IN MANHOLES SHALL CONTAIN 6 SACKS OF CEMENT PER CUBIC YARD.  
 STANDARD MANHOLES AND DROP MANHOLES, REGARDLESS OF DIAMETER SHALL BE BID AT ONE PRICE AS STANDARD MANHOLES.  
 SINGLE OR DOUBLE OUTSIDE DROP MANHOLES SHALL BE BID AT ONE PRICE AS OUTSIDE DROP MANHOLES.  
 ALL MANHOLES WITH PIPES LARGER THAN 24" SHALL BE 5' DIAMETER UNLESS OTHERWISE SPECIFIED ON PLAN. ALL M.H.'s WITH PIPES 24" & SMALLER SHALL BE 4' DIA.

DETAILS OF SEWER APPURTENANCE ADOPTED AS STANDARD DESIGN BY ENGINEERING DIVISION CITY OF WICHITA, KANSAS R. W. LINN CITY ENGINEER

2-25-75

APPROVED AS NOTED  
By CITY ENGINEER OF WICHITA  
Sanitary Sewers 6" 48" DE  
Storm Sewers  
Driveway Approaches

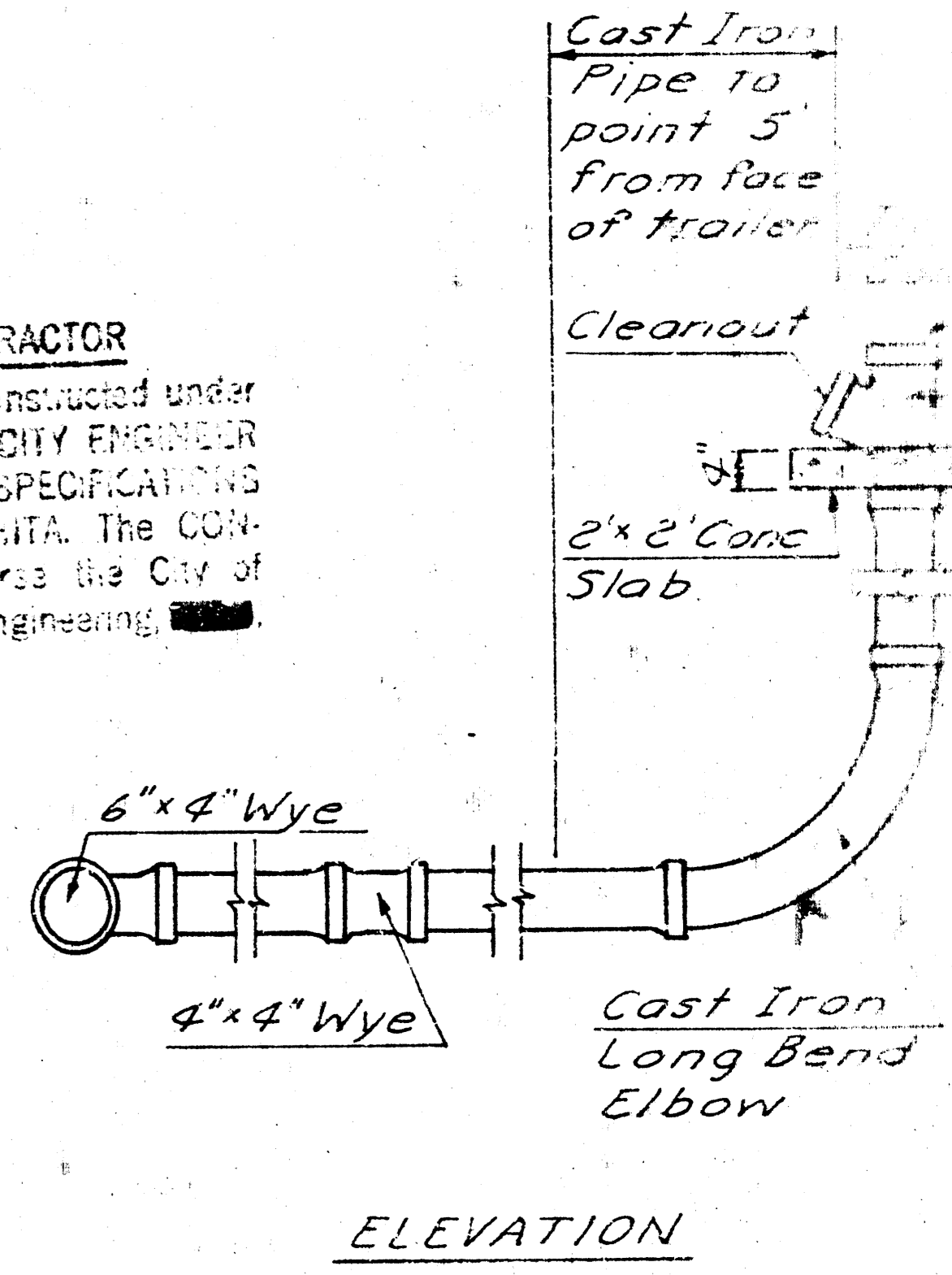
Scale: 1" = 50'



**NOTE:**  
Sta. 0+00 to Sta. 2+05 is not a part of this contract. This portion is to be constructed under City of Wichita project No. DBK L575010, Lat. 12, Main 10, W. I. S.

Note: The Contractor shall verify locations of underground utilities prior to the trenching operation.

**NOTE TO CONTRACTOR**  
This project will be constructed under the supervision of the CITY ENGINEER and conforming to the SPECIFICATIONS of the CITY OF WICHITA. The CONTRACTOR will reimburse the City of Wichita for all cost of engineering and inspection.



B.M. - Top MH Rim - Sta. 0+00  
Elev. 146.23

