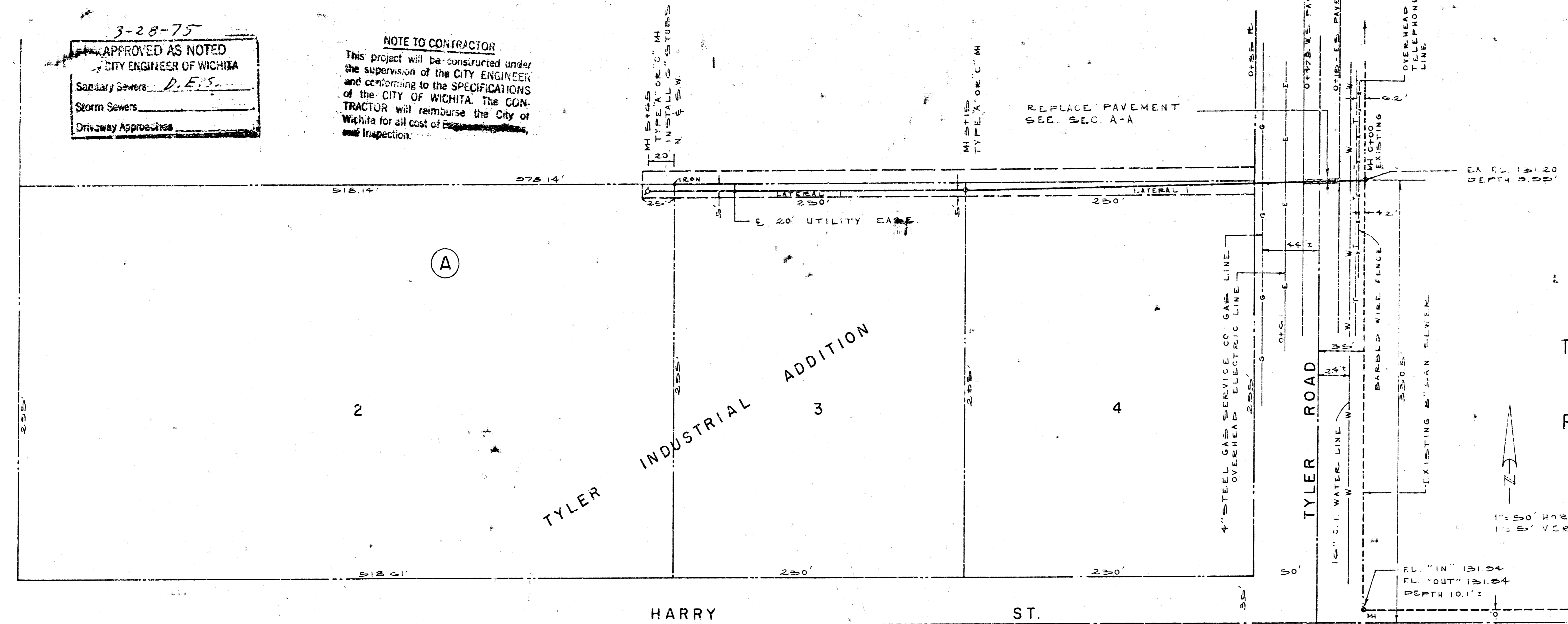


B.M. - ELEV. 141.15 - NORTH RIM OF EXISTING M.H. 0+00.

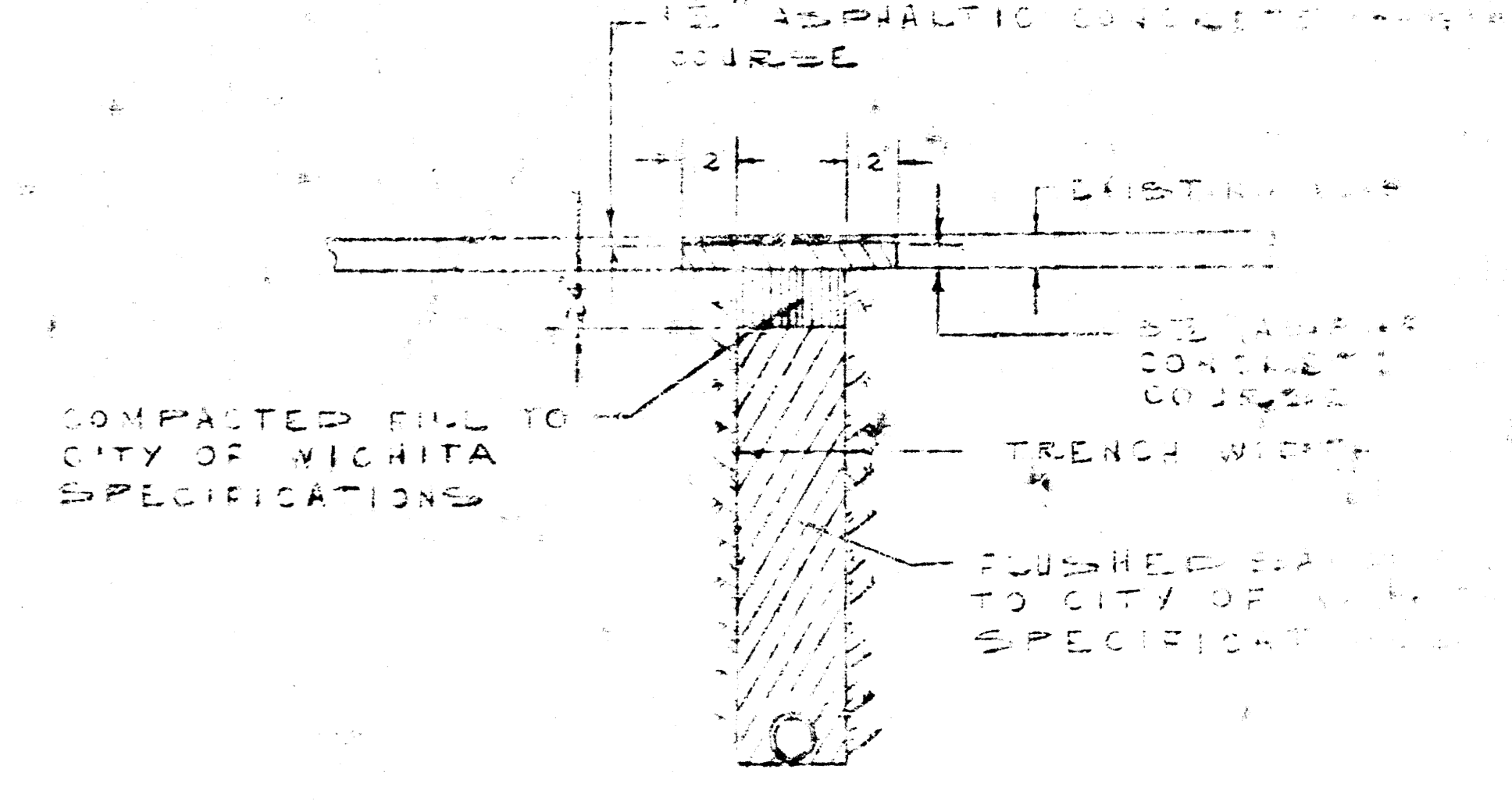
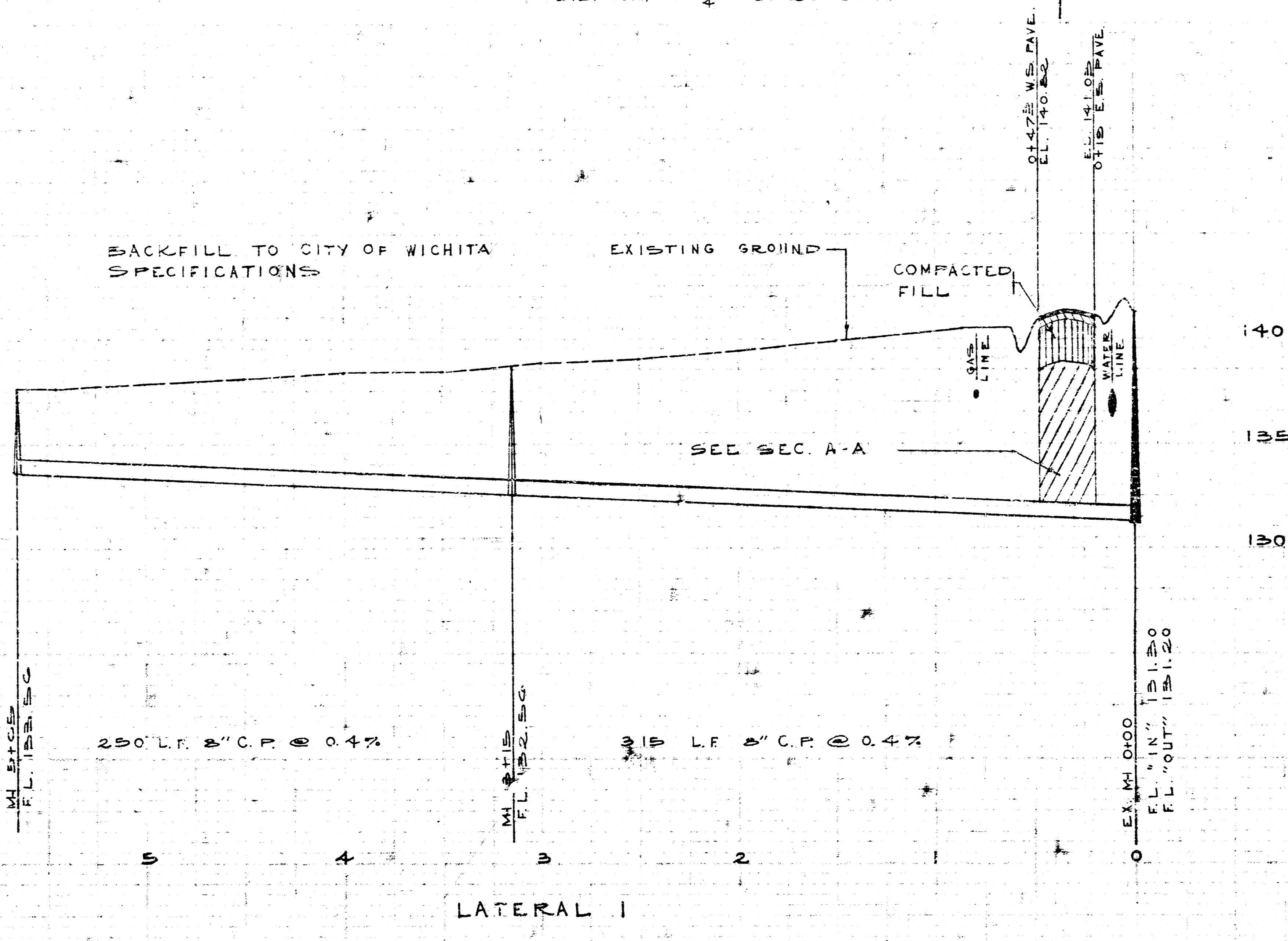
3-28-75
APPROVED AS NOTED
CITY ENGINEER OF WICHITA
Sanitary Sewers: D.E.S.
Storm Sewers
Driveway Approaches

NOTE TO CONTRACTOR
This project will be constructed under the supervision of the CITY ENGINEER and conforming to the SPECIFICATIONS of the CITY OF WICHITA. The CONTRACTOR will reimburse the City of Wichita for all cost of ~~design~~ ~~and~~ inspection.



TYLER INDUSTRIAL ADDITION
SANITARY SEWER
PROJECT NO. DBKW 705007

K.O. TAYLOR, P.E.
MARCH 25, 1975



CONTRACTOR MUST NOTIFY THE GAS SERVICE CO. AND THE CITY OF WICHITA WATER DEPARTMENT BEFORE COMMENCING WORK.