

SANITARY SEWER TO SERVE

Vilm Gardens Second Addition

BLOCK B, LOTS 1, 2, 3, 10, 11 & 12

Private Project #1239 PPS (607861)

CITY OF WICHITA, KANSAS
 Michael E. Lindebak, P.E. City Engineer
 May, 2002

Index

Cover/Plan/Profile Sheet	1
Standard Manhole Details	2
Ring & Cover Details	3
BMP Erosion Detail	4
Copy Of Plat	5

Legal Description:

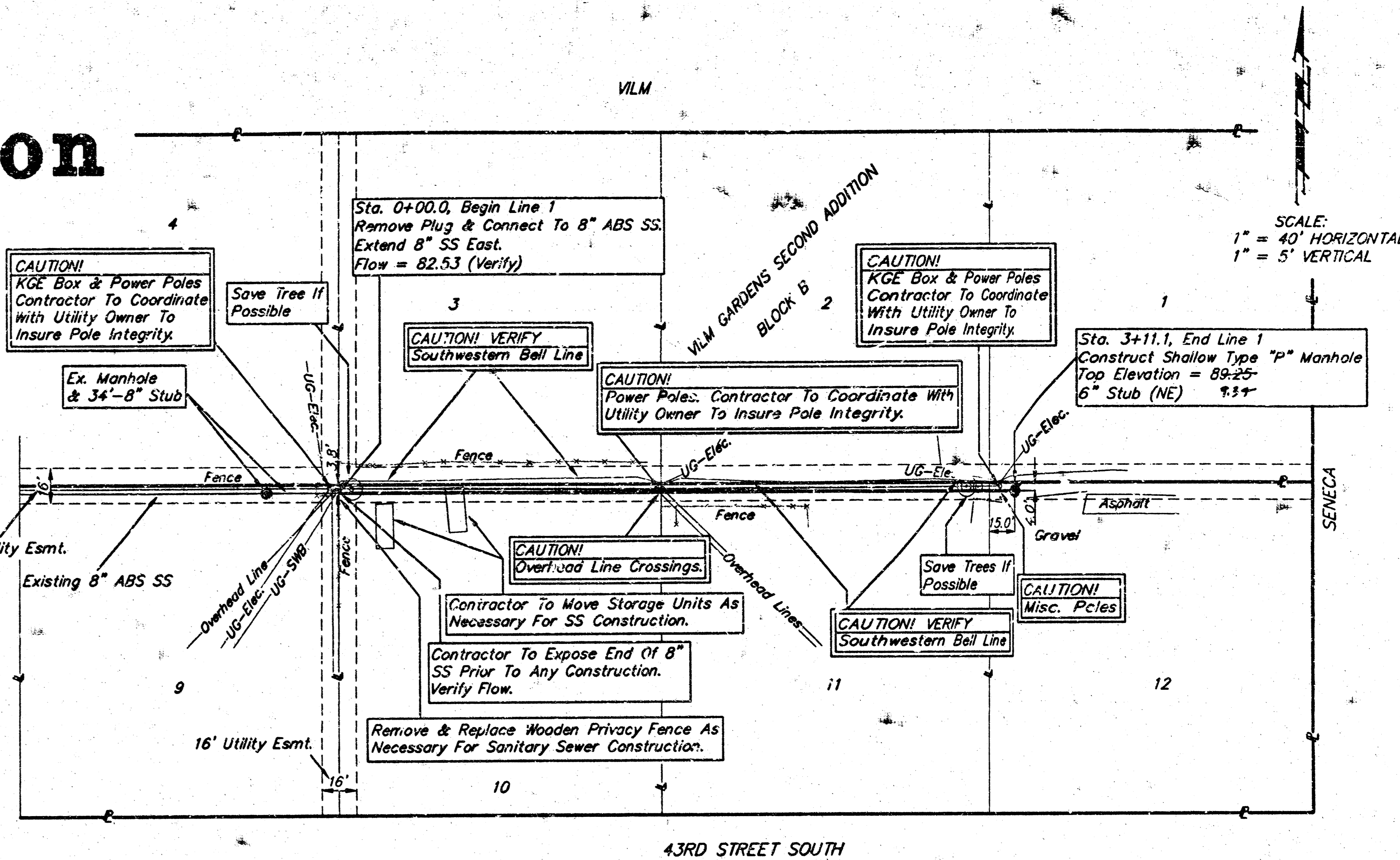
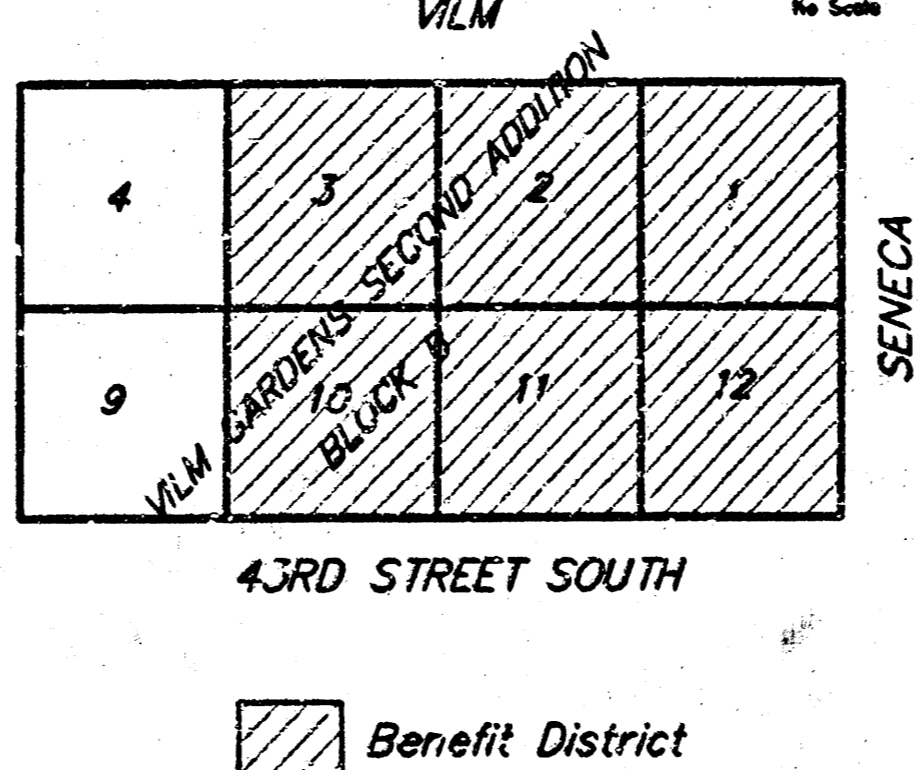
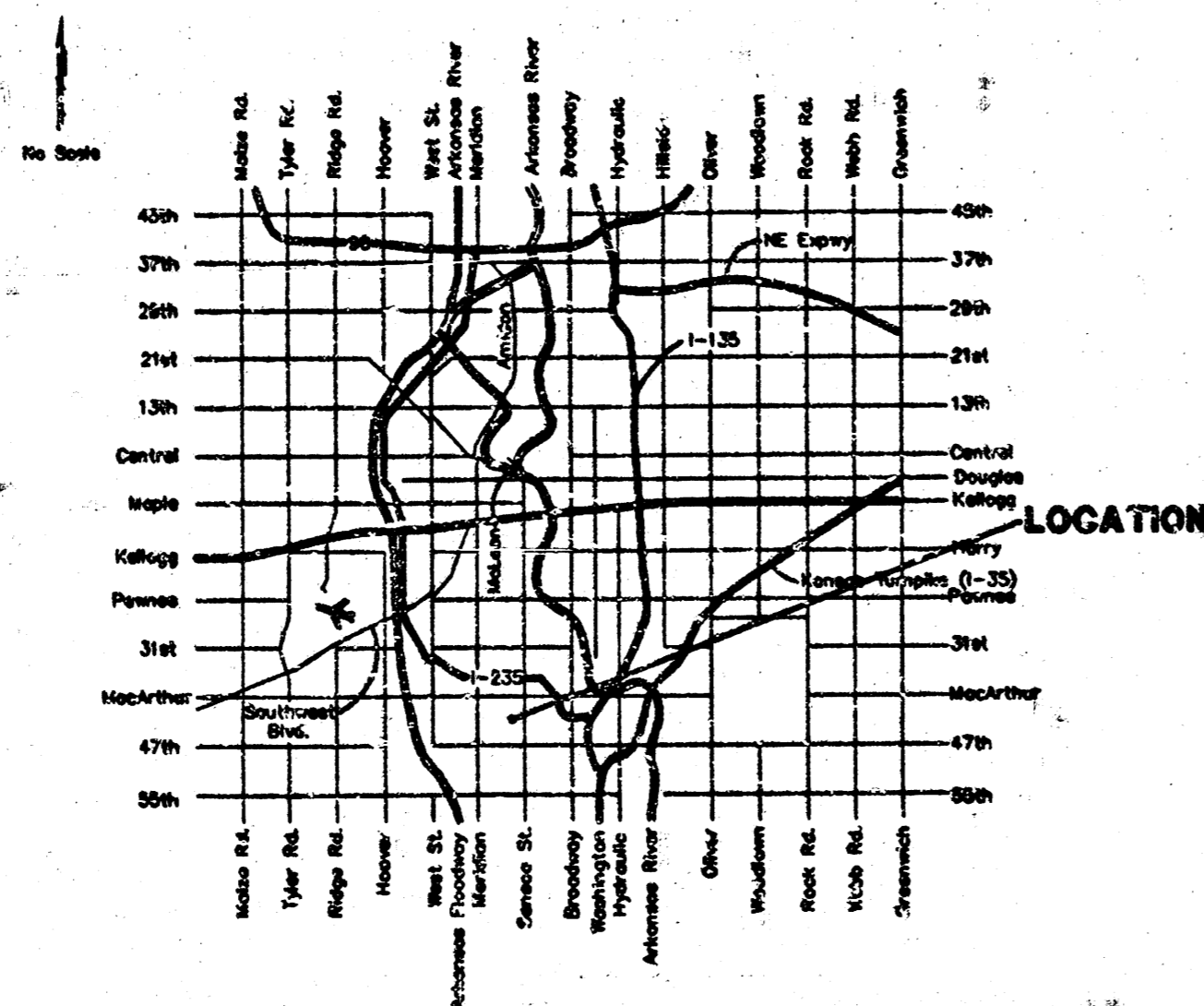
Lots 1 & 2, Block B, Vilm Gardens Second Addition
 Sedgwick County, Kansas

Bench Marks:

- Seneca and Vilm COW Bench Mark, SW corner of intersection, 20.10 ft. South of Center Line, 67.60 ft. West of center line, 4.50 ft. South of back of curb, Elevation = 87.62 (City Datum)
- notch in top of curb south of SW corner Lot 10, Block B, Vilm Gardens Second Addition, Elevation = 88.45 (City Datum)

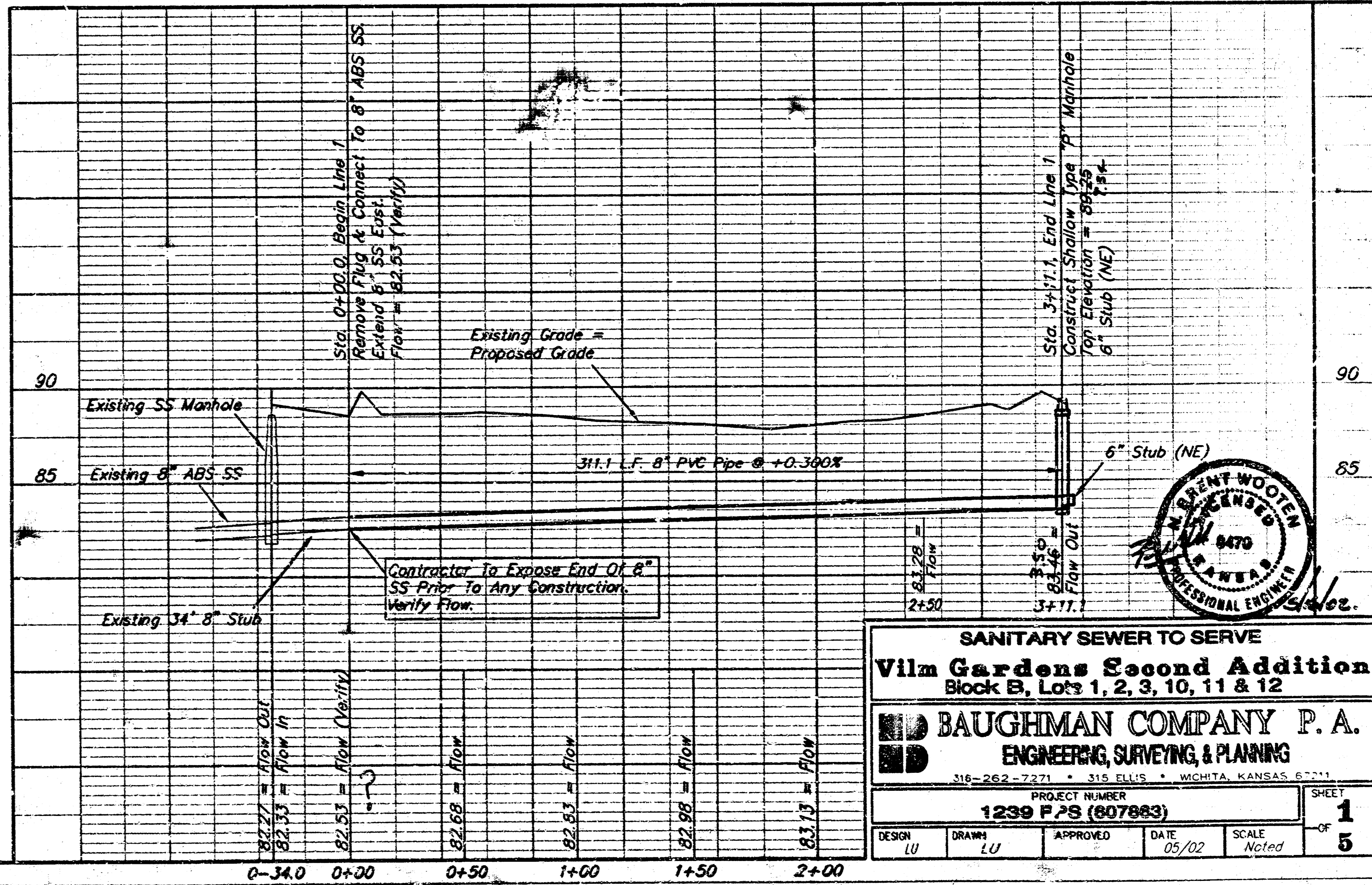
General Notes

- Contractor will be required to provide notice to utility companies a minimum of forty-eight (48) hours prior to any excavation, as follows:
 Kansas One-Call 687-2470
 The Contractor must notify the following in case of an emergency:
 Cox Communications 262-4270
 Kansas Gas Service Company 1-888-482-4950
 Westar Energy (Electric) 383-8650
 Aquila Energy (Gas) 1-800-303-0357
 Southwestern Bell Telephone Company 800-286-8313
 City of Wichita Water Dept. (Water) 268-4908
 City of Wichita Sewer Maint. (San. Sewer) 268-4024
 City of Wichita Storm Sewer Maint. 268-4090
 City of Wichita Traffic Maint. 268-4034
- Utility service lines, poles, valve boxes, meters, et cetera are to be adjusted as necessary by others prior to construction unless the plans specifically call for their adjustment by the Contractor or unless the plans specifically identify a utility to be adjusted by its owner during construction. Existing utilities and their location, as shown on the plans represent the best information obtainable for design and shall be field verified. The contractor will be required to work around existing utilities within the right-of-way which do not conflict with proposed construction.
- Contractor shall not start work on the project until the project inspector is assigned to the project and is present on the site. Contractor shall not start on the project until all necessary bonds and permits have been obtained. Any work done without inspection will be required to be uncovered for inspection.
- All R/W areas disturbed by construction operations shall be seeded with K-31 Fescue at a rate of 8 lbs. per 1000 sq. feet or as per city specs. Contractor to prepare ground to city specifications.
- All sanitary sewer mains and appurtenances shall be installed in accordance with the most recent edition of City of Wichita, Kansas Standard Specifications for the Construction of City Projects.
- Trees and shrubs in public right-of-way which are in direct conflict with proposed new construction shall be removed by the Contractor with the Engineer's approval. Trees and shrubs which are not in direct conflict with proposed new construction shall be saved and protected from damage.
- The Contractor shall give all property owners and/or tenants of developed property abutting the construction of this project a minimum of five (5) days advance notice prior to start of construction.
- Rubble from the removal of miscellaneous structures and excess excavation which is to be wasted shall be disposed of on sites to be provided by the Contractor. These sites shall be approved by the Engineer as to suitability, appearance and site location. Locations that, in the opinion of the Engineer, will leave an unsightly appearance will not be approved. All disposal sites must be approved by the Kansas Department of Health and Environment. Material either stockpiled or disposed of in a flood plain would require a Kansas State Board of Agriculture permit. Any material dumped in waters of the United States or wetlands is subject to U.S. Corps of Engineers permitting regulations. Any material buried or stockpiled beyond approved construction limits would require additional archaeological investigations unless buried in a previously approved borrow location.
- The Contractor shall be responsible for maintaining continuous flow of sewage through construction. Contractor's proposed method for maintaining sewage flow shall be approved by the Engineer. Cost of maintaining flow of sewage through construction will not be paid for directly and this cost shall be considered as subsidiary to the other pay items of work.



APPROVED AS NOTED
 BY CITY ENGINEER OF WICHITA
 Sanitary Sewers VRH 5/17/02
 NOTE TO CONTRACTORS
 Installation, inspection and testing for this project is to be provided by a Licensed Consulting Engineering Firm under contract with the Owner/Developer. Said inspection to be in accordance with the City of Wichita standard construction engineering practices and certified by a Licensed Professional Engineer. No work shall be performed in dedicated easements or public right-of-way by the Contractor without such inspection nor shall any work be commenced without written authorization by the City Engineer. All construction and materials shall comply with the City of Wichita Specifications and Standards (as file and available in the City Engineer's Office).

Booked
 P-226
 6-24-02
 ROL



As Built 6/02 KK

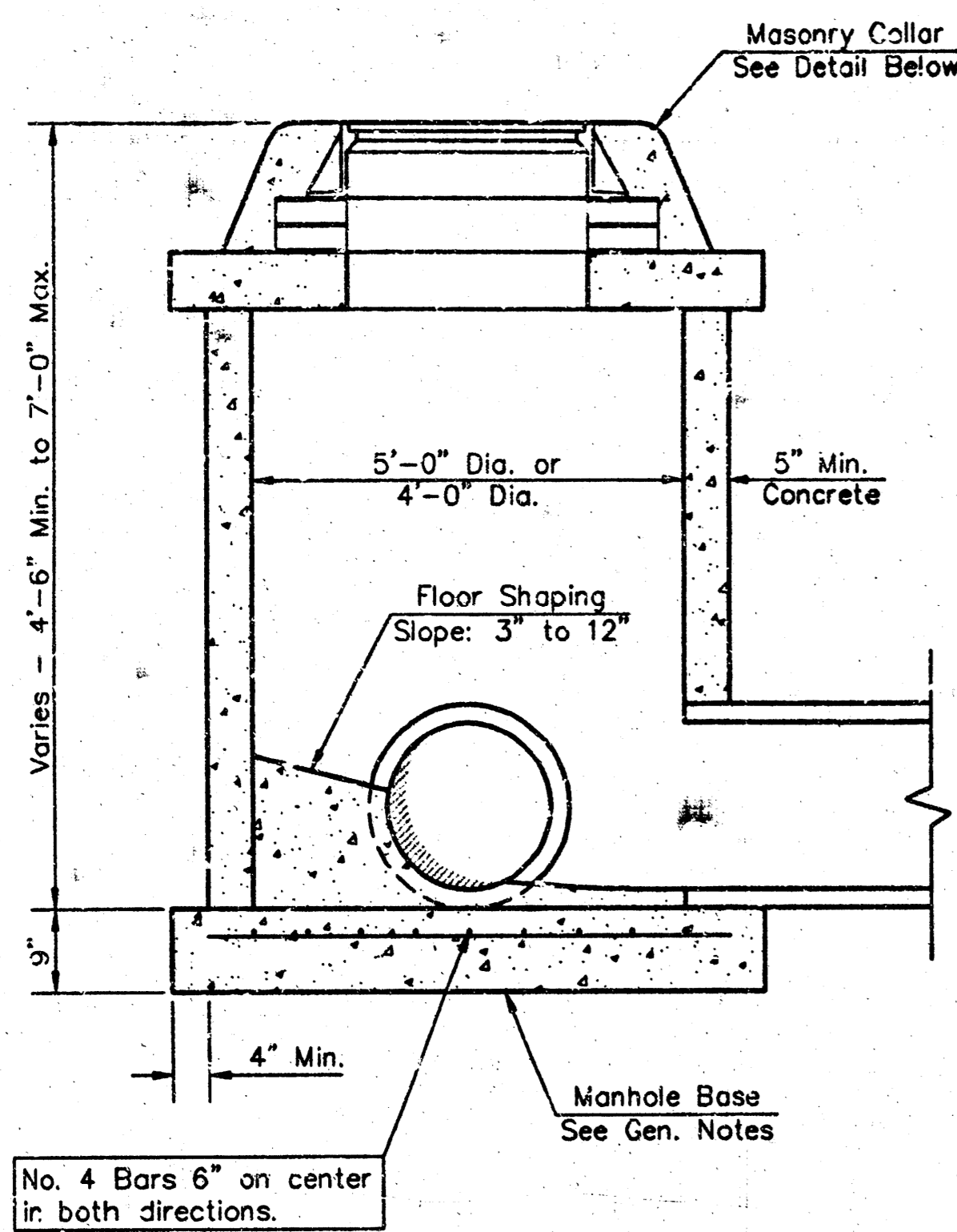
SANITARY SEWER TO SERVE
Vilm Gardens Second Addition
 Block B, Lots 1, 2, 3, 10, 11 & 12

BAUGHMAN COMPANY P.A.
 ENGINEERING, SURVEYING, & PLANNING
 315 ELLIS • WICHITA, KANSAS 67201
 PHONE: 262-7271 • FAX: 262-7275

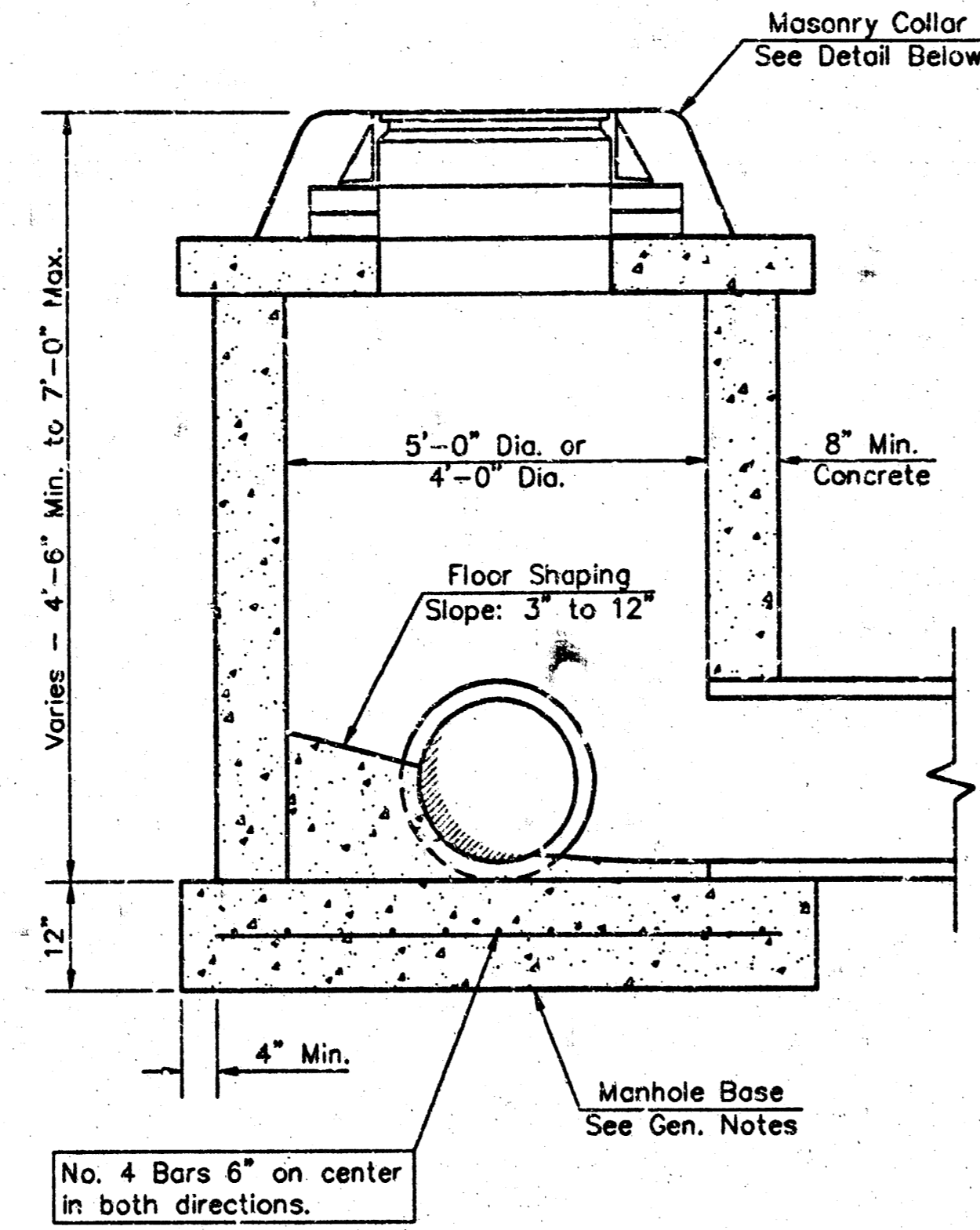
PROJECT NUMBER
1239 PPS (607861)

DESIGN LU DRAWN LU APPROVED DATE 05/02 SCALE Noted SHEET 1 OF 5

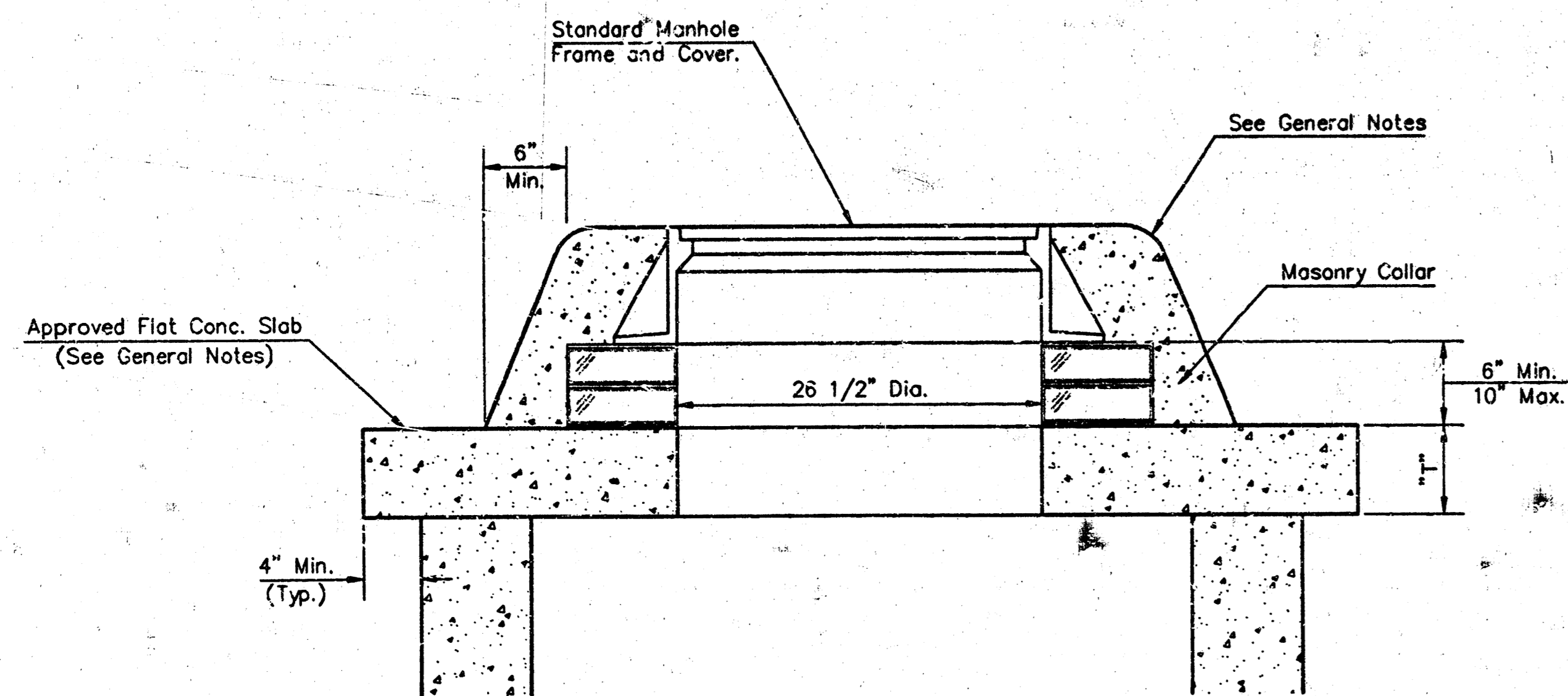
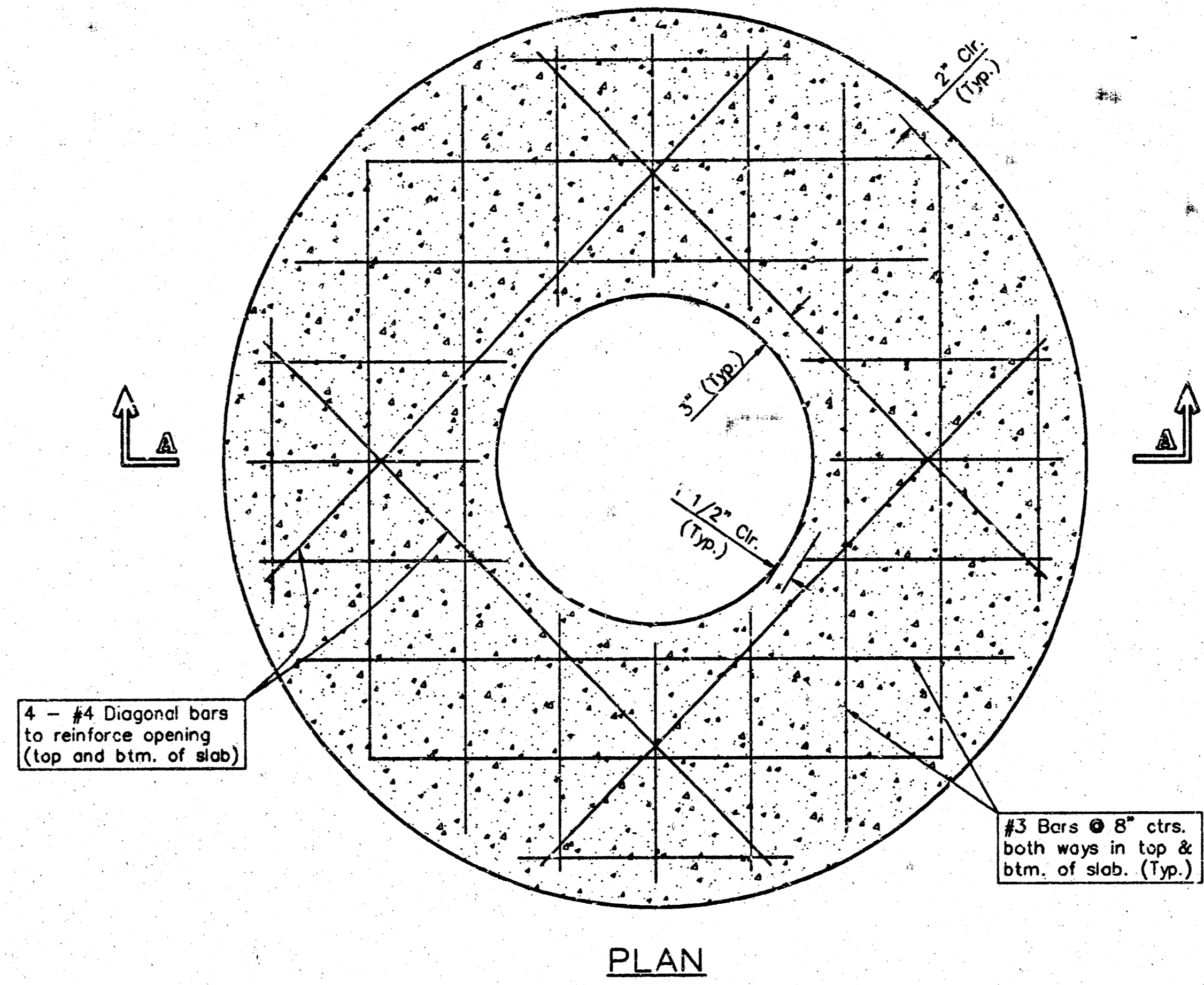
Contractor Shall Follow All
 Applicable Best Management Practices (BMP)
 For Erosion Control, See Sheet 4



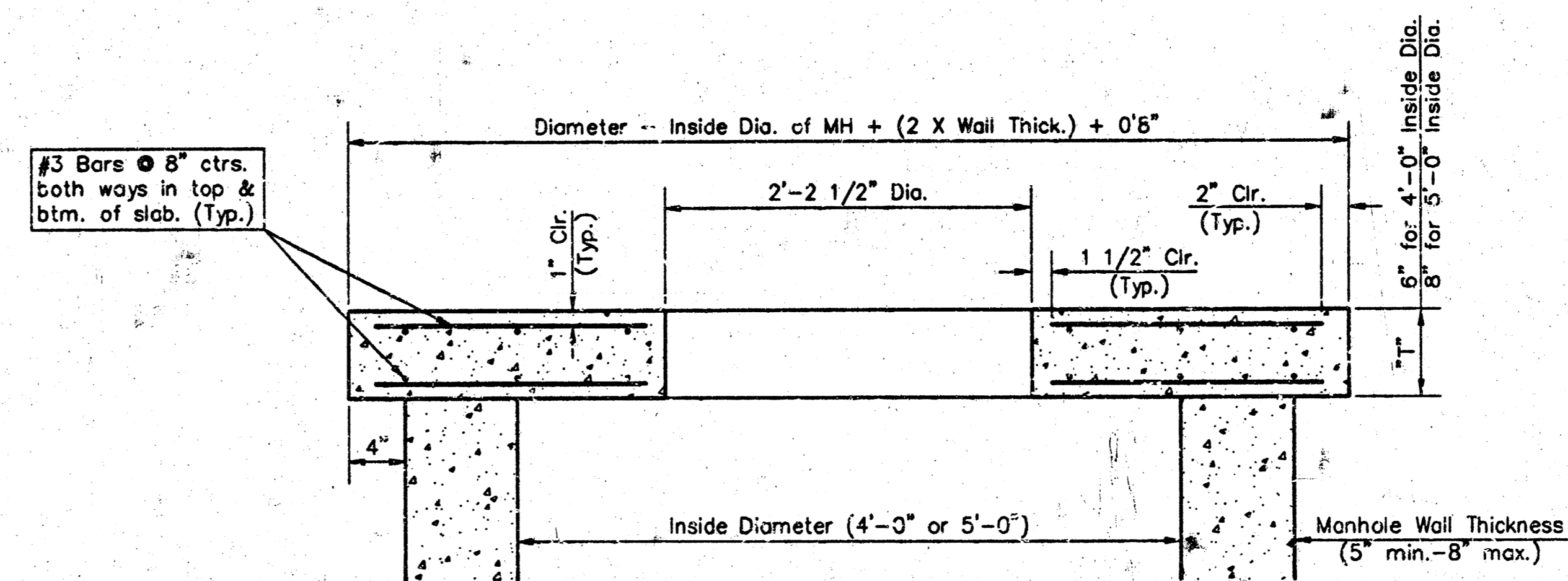
SHALLOW TYPE "P" MANHOLE



SHALLOW TYPE "C" MANHOLE



MASONRY COLLAR DETAIL



**SECTION A-A
FLAT CONCRETE SLAB DETAILS**

GENERAL NOTES

- Mortar used in masonry construction shall contain 8 sacks of cement per cubic yard. Concrete used in manhole bases shall conform to the requirements of concrete for concrete pavement construction as specified in the city standard paving specifications using city concrete cement mix without air entraining admixture. Mortar shall be placed around the manhole ring as shown on the drawings when manholes are constructed in unyielded areas. Manholes constructed where pipe sizes are smaller than 24" shall have an inside diameter of 4". Manholes constructed where pipe sizes are 24" or larger shall have an inside diameter of 5". Completed manhole shall be without leaks and water tight.
- Reinforcing steel shall be installed in the manhole bases and shall consist of no. 4 bars placed on 6" centers in both directions. The manhole base reinforcement shall be placed 6" above the bottom of the manhole base. All costs for furnishing and installing reinforcing steel shall be included in the unit price bid for the manhole.
- The floors of all manholes shall be shaped with flow channels such that the manholes will be self cleaning and free of areas where solids could be deposited as sewage flows through the manhole from all inlet pipes to the outlet pipe. Flow channels shall be formed to match the bottom halves of the inflowing pipes and the outflowing pipe as shown by the drawings. Manhole floors shall have slopes of 3 inches per foot in the areas outside of the flow channels sloped toward the flow channels. Pipes laid through manholes shall have the top half removed to neat lines for the full inside diameter of the manhole. Manhole floors shall then be shaped around the bottom half of the pipe which forms the flow channel.
- Pipes installed within the excavation made for the manhole shall be cradled with concrete to the limits of the manhole excavation. When clay pipe is used, the cradle shall extend to the first joint outside the manhole. The cradle shall be terminated at the clay pipe joint in a manner which will maintain the flexibility of the joint. Cost of cradle within manhole excavation or to clay pipe joints adjacent to manhole shall be included in the unit price bid for the manhole.
- Manhole cover castings and manhole frame castings shall conform to the requirements as indicated in the standard specifications and as shown in the standard detail drawings.
- The crowns of inflowing pipes shall never be set lower than the crown of the outflowing pipe.
- Standard shallow manholes type "P" and "C" shall be paid for at the unit price bid per each for the type and diameter indicated. All standard shallow manhole diameters will be 4' unless indicated otherwise.
- All brick used in manhole construction shall meet Grade SW of ASTM C652 or C62-87.

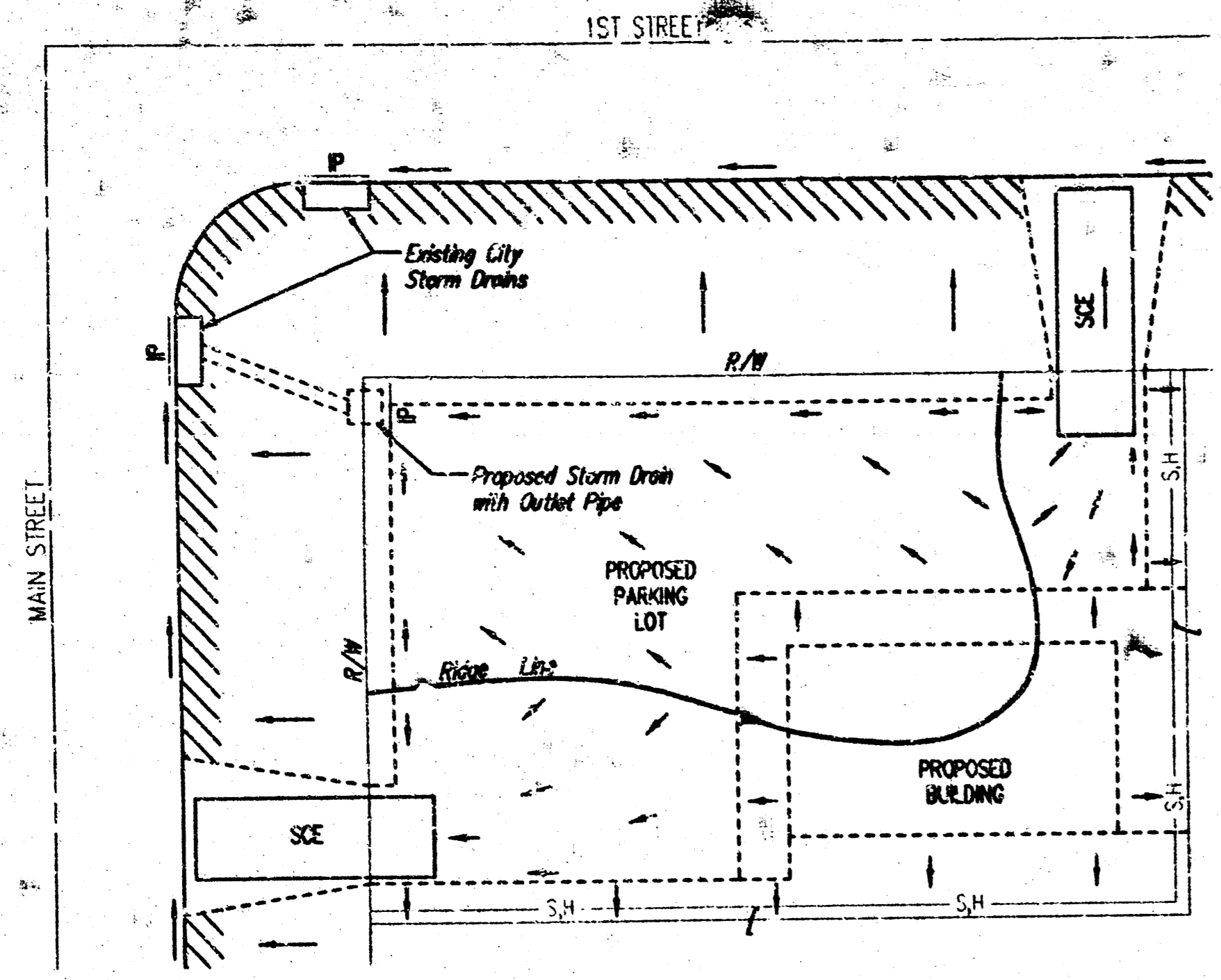
CITY OF WICHITA, KANSAS
STD. SHALLOW MANHOLES
 TYPE "P" AND TYPE "C"

BAUGHMAN COMPANY P.A.
 ENGINEERING, SURVEYING, & PLANNING
 316-262-7771 316-262-7772 WICHITA, KANSAS 67211

PROJECT NUMBER
1236 PPS (607891)

DESIGN STAFF DRAWN STAFF APPROVED STAFF DATE SCALE NONE

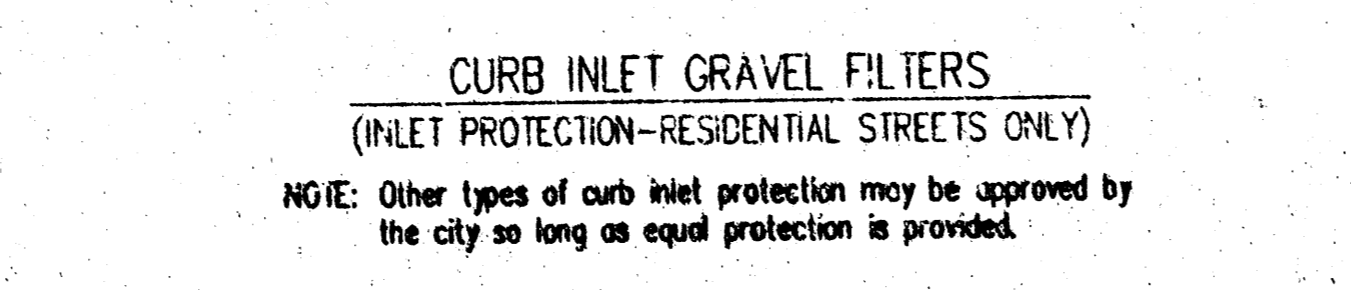
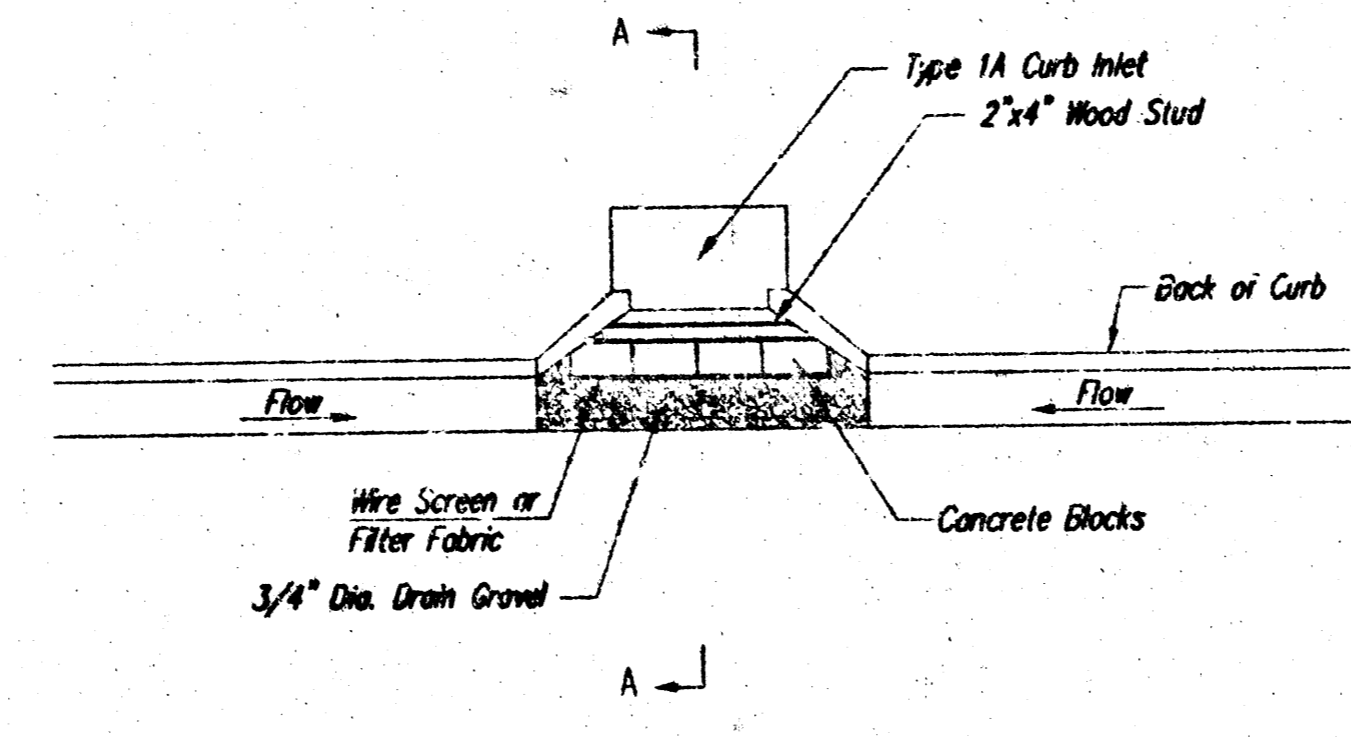
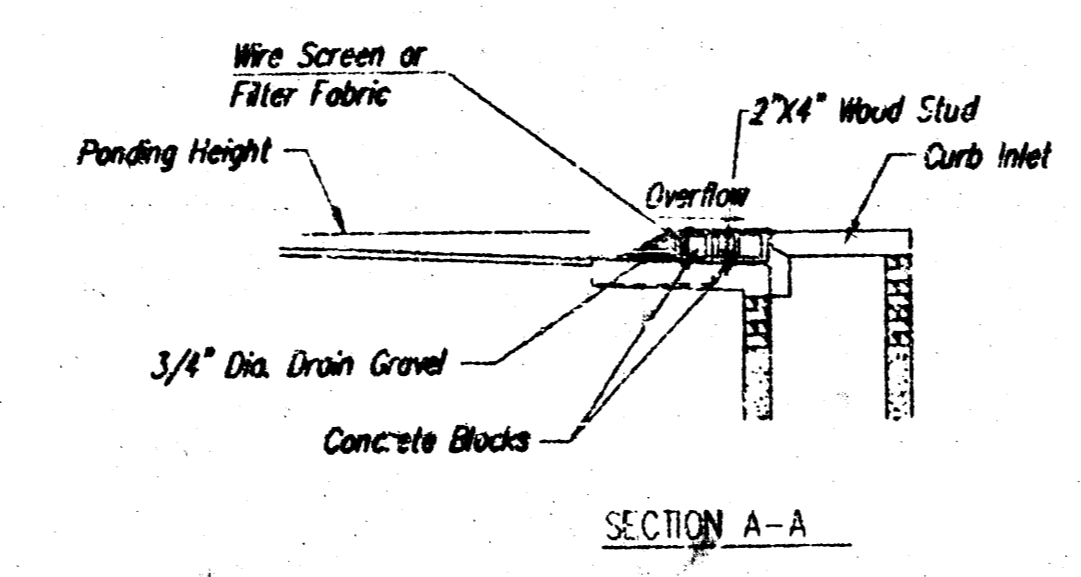
SHEET **2** OF **5**



- LEGEND**
- Flow Direction
 - IP Inlet Protection - to be provided at all inlets subject to all town runoff.
 - S.H.- Silt Fence or Hay Bale Barrier - to be installed along property lines where runoff from construction site can run onto other properties.
 - SCE Stabilized Construction Entrance - to be used at all locations where vehicles or equipment enter or exit property.
 - Back of Curb Protection - to be installed wherever curb is backfilled to less than 3 inches from top and disturbed earth exists adjacent thereto. (See City Standard Details.)

General Notes

1. This standard detail sheet is a part of your building permit. The BMP's shown on this sheet are considered minimum standards. Whenever sediment enters the streets, storm sewers, ditches, or ponds, contractor will install additional BMP's, as needed, to correct the problem.
2. Follow these general principles on all commercial building sites.
3. The soil erosion BMP's shown hereon must be in place at all times during construction until such time as the site is re-established with paving or grass.
4. Failure to install, protect, and maintain BMP's are violations of section 16.32 of the City Code and will subject the contractor to the penalties provided therein. Included with your permit is an orange "notice" sign that must be posted on-site in a conspicuous place at all times during construction. This sign is provided to assist you in the maintenance of BMP's.
5. Back of Curb Protection: Can include hay bales, silt fence, or Curlex barrier, as shown on City G&P standard details. This BMP must remain in place until the area between the curb and right-of-way line has been permanently stabilized.
6. The General Contractor is responsible for the installation and maintenance of all BMP's.
7. Should the site about a lot, BMP's will be installed to prevent sediment from entering the lot.
8. Any mud inadvertently tracked onto any street will be cleaned up by the general contractor at the end of each day's work.



CURB INLET GRAVEL FILTERS
(INLET PROTECTION-RESIDENTIAL STREETS ONLY)
NOTE: Other types of curb inlet protection may be approved by the city so long as equal protection is provided.

A gravel inlet filter shall be installed at sump locations on residential streets. This type of protection is not to be used on arterial or collector streets at any time that it would pose an undue traffic hazard.

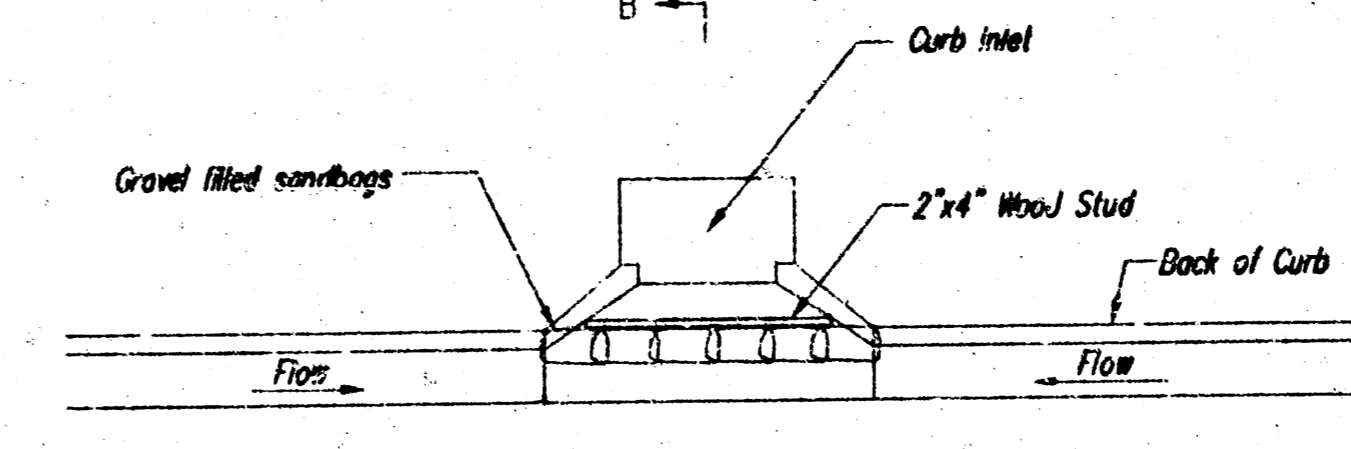
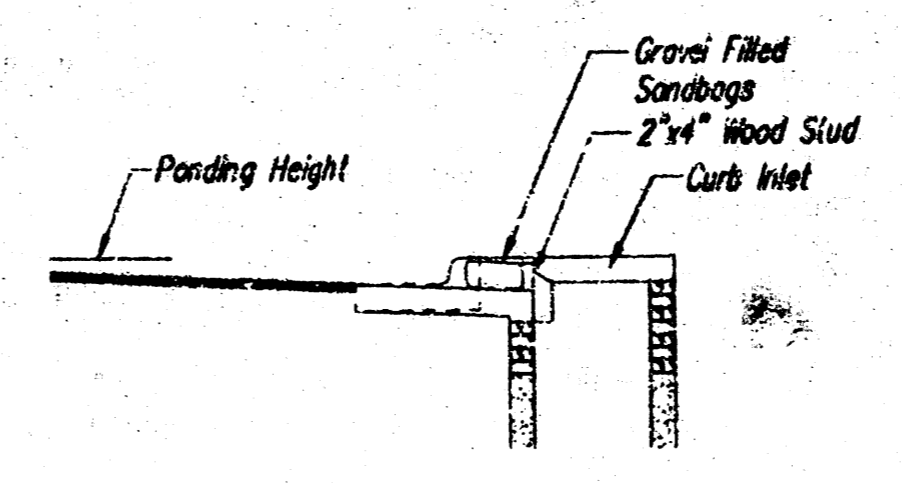
Instructions for installing:

- STEP 1: Place concrete blocks around the inlet as shown on drawing. Insert 2x4 board as shown.
- STEP 2: Wrap 1/2" mesh wire screen around the concrete blocks.
- STEP 3: Place 1" to 1-1/2" diameter rock around the blocks and wire screen. Be sure the rock extends down from the top of the concrete block.
- STEP 4: To prevent damage to vehicles, signs warning drivers about the structures may be necessary. An alternative installation is the use of gravel bags supported by a 2"x6" board to prevent collapsing.

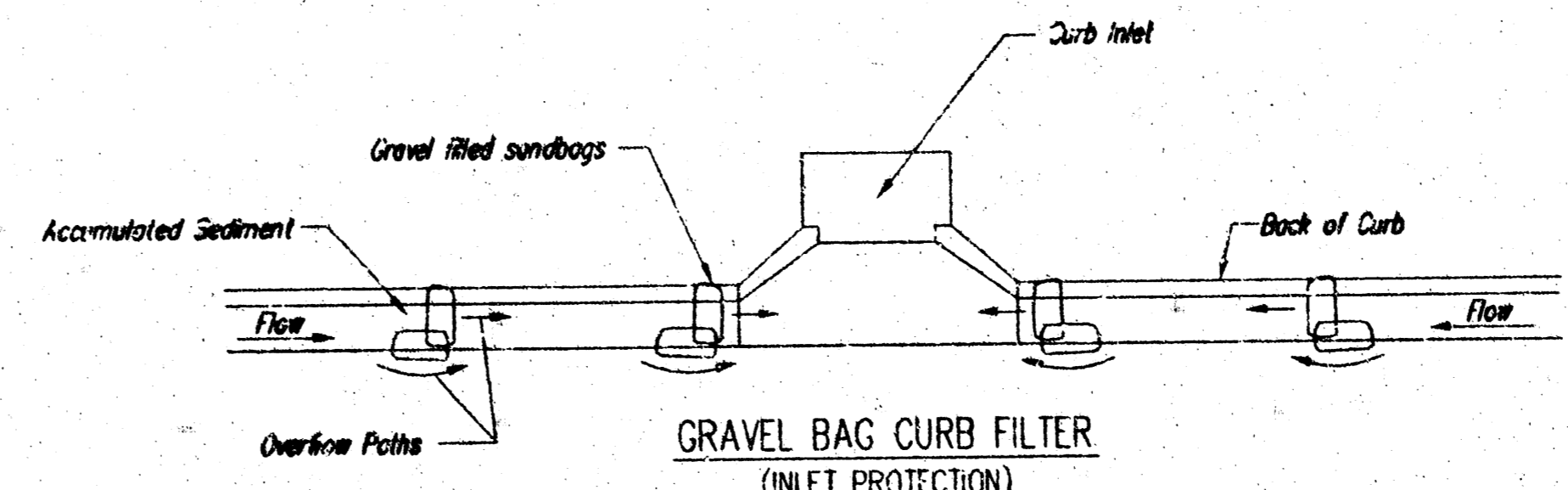
Use of rock with diameters smaller than 1" in the bag may result in clogging of pores and reduce the amount of water flowing into an inlet.

Maintenance:

All curb inlet gravel filters shall be inspected and repaired after each runoff event. Sediment deposits are to be removed once material is within 8 cm (3 inches) of the top of any block. Periodically, the gravel shall be raked to increase infiltration and filtering of runoff waters. Accumulated sediment is to be removed immediately from rock and streets.



CURB INLET SANDBAG FILTERS
(INLET PROTECTION)
NOTE: Other types of curb inlet protection may be approved by the City so long as equal protection is provided.



GRAVEL BAG CURB FILTER
(INLET PROTECTION)
NOTE: Place two or more sets of bags in a manner that results in maximum support. The flow line bag must be lower than top of curb.

CURB SEDIMENT TRAPS

When inlets are located on streets having a grade (i.e., sump conditions do not exist), installing gravel (or sand) bags in the gutter flow line to create small sediment traps can be considered. Gravel bags are recommended over sand bags to allow for drainage.

If the spacing between bags becomes too large, little sediment may be trapped. Spacing of bags should be completed using the table or graph that illustrates placement distances based upon street slope. When installed in the gutter, bag tops must be lower than the sidewalk.

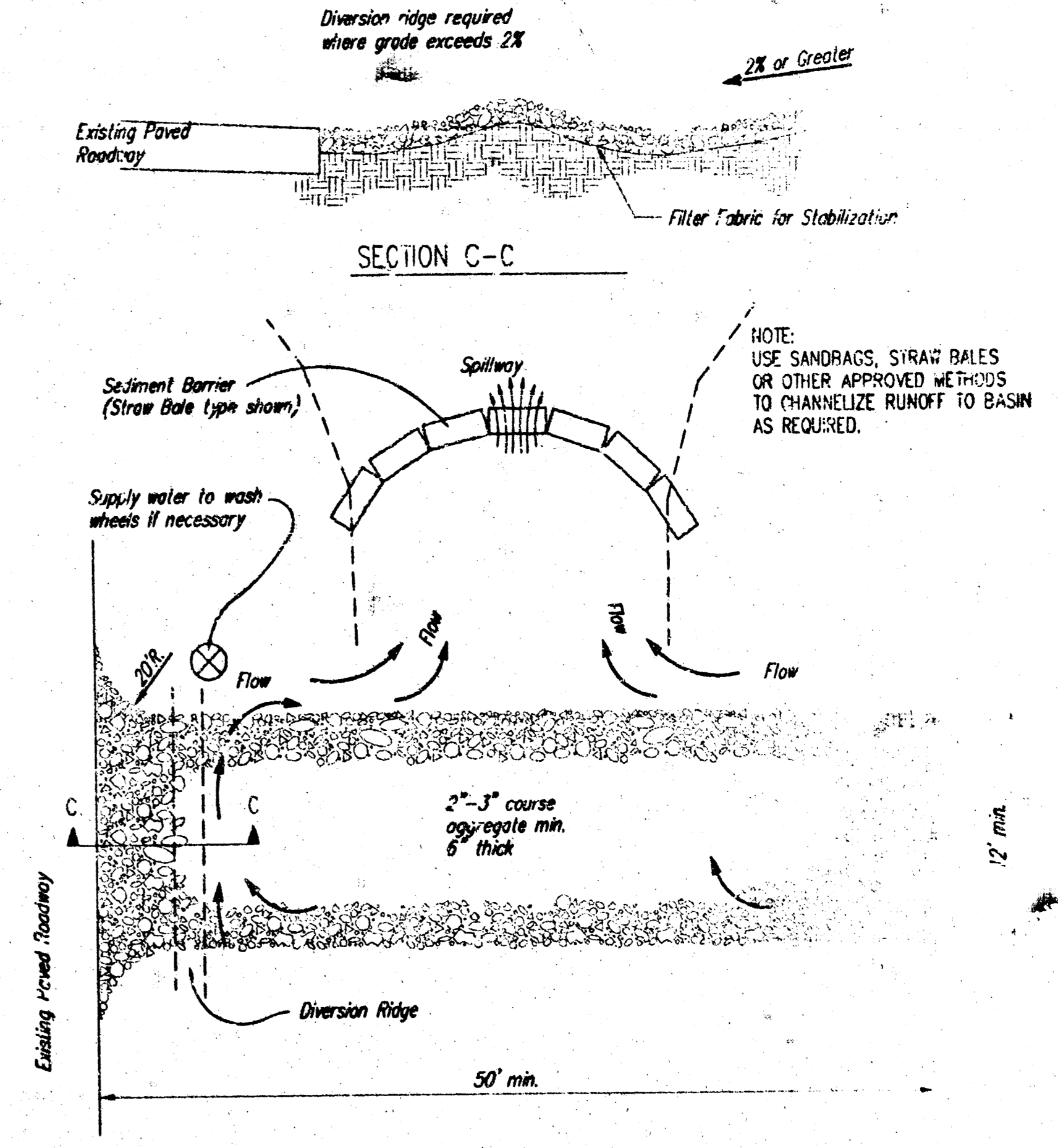
Spacing:

Gravel bags are to be placed according to street grades using the following table or graph that appears below.

GRADE (%)	SPACING (FEET)
0.5	75
1.0	45
2.0	18
3.0	12
4.0	9
5.0	6

Maintenance:

Collected sediment shall be removed after every runoff event. Bags that are destroyed by vehicular traffic or through natural deterioration are to be immediately replaced.



STABILIZED CONSTRUCTION ENTRANCE

NOTES:

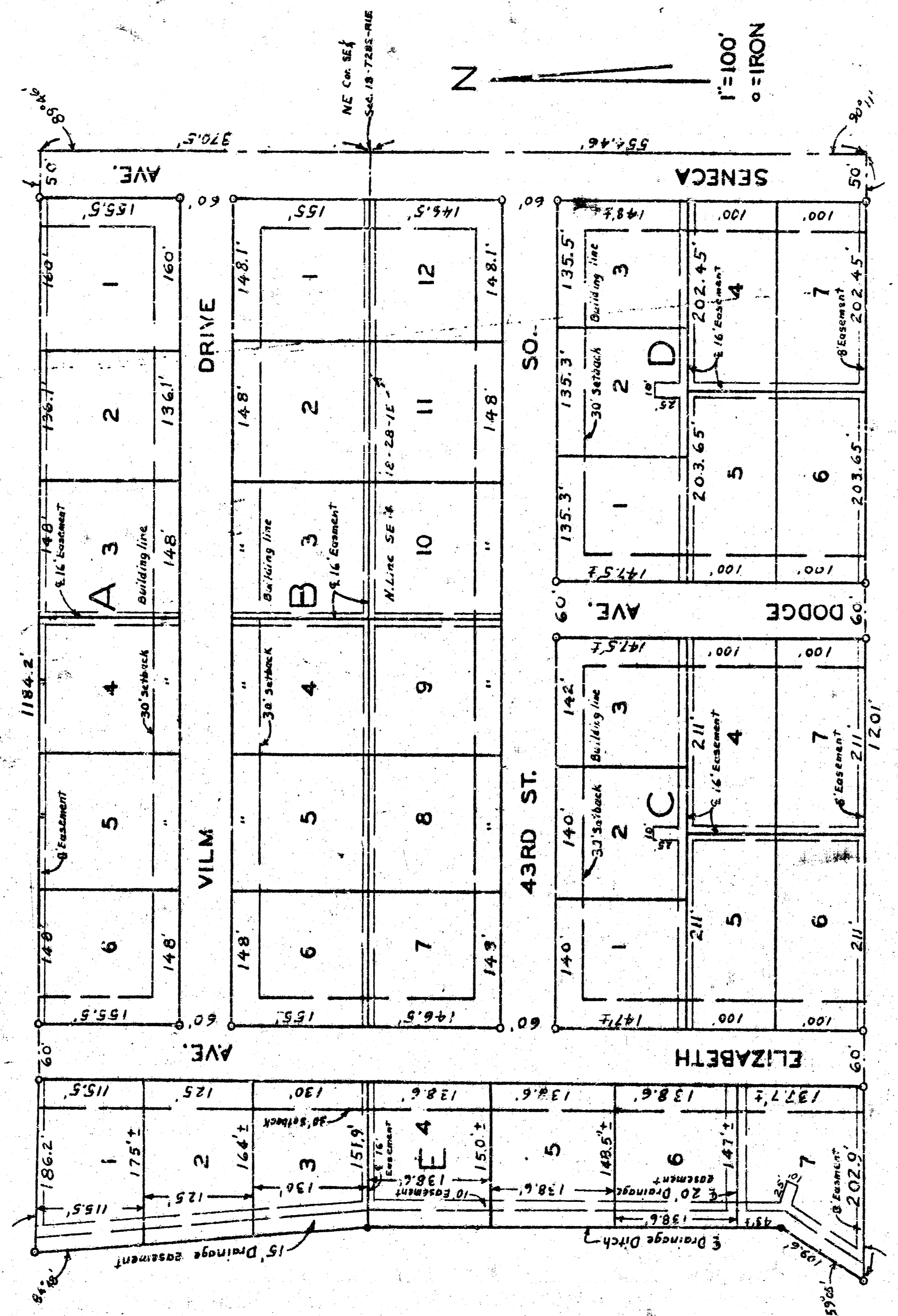
1. THE ENTRANCE SHALL BE MAINTAINED IN A CONDITION THAT WILL PREVENT TRACKING OR FLOWING OF SEDIMENT ONTO PUBLIC RIGHTS-OF-WAY. THIS MAY REQUIRE TOP DRESSING, REPAIR AND/OR CLEANOUT OF ANY MEASURES USED TO TRAP SEDIMENT.
2. WHEN NECESSARY, WHEELS SHALL BE CLEANED PRIOR TO ENTRANCE ONTO PUBLIC RIGHT-OF-WAY.
3. WHEN WASHING IS REQUIRED, IT SHALL BE DONE ON AN AREA STABILIZED WITH CRUSHED STONE THAT DRAINS INTO AN APPROVED SEDIMENT TRAP OR SEDIMENT BASIN, AS SHOWN ABOVE.
4. DRIVE ENTRANCES ONTO RESIDENTIAL LOTS WILL NOT BE REQUIRED TO HAVE THE SEDIMENT BARRIER SHOWN, BUT WHEEL WASHING MAY BE REQUIRED IF STABILIZED ENTRANCE IS NOT SUFFICIENT TO KEEP MUD FROM BEING TRACKED ONTO ADJACENT STREET. ENTRANCE SHALL EXTEND FROM BACK OF CURB TO DWELLING.

	SOIL EROSION BMP DETAILS	
	CHRISTOPHER M. CARRIER, P.E. STORM WATER ENGINEER	
	PROJECT NUMBER: 1239 PPS (607861)	NA
	DATE: 05/02	SHEET 4 OF 5

PLA 45 approved MIN 20201-2022 REC - 1108 04
299 P 11

14 03 05 04
Miss (postmark)

VILM GARDENS SECOND ADDITION SEDGWICK COUNTY, KANSAS



State of Kansas }
County of Sedgwick } ss

I, Kenneth D. Boyer, civil engineer in said state and county do hereby certify that I have surveyed and platted "VILM GARDENS SECOND ADDITION", Sedgwick County, Kansas, and that the accompanying plat is a true and correct exhibit of said survey described as follows: Beginning at the NE corner of the SE 1/4 of Sec. 18, T29S, R1E of the 6th P.M., thence south 58°44'44" east 338.44 feet; thence west 120 feet to the center of a ditch, thence NE along said ditch to a point 500 feet west of beginning, thence east 1150 feet to point of beginning, also 77.2 south 370.5 feet of VILM GARDENS, Sedgwick County, Kansas.

Men all men by these presents that we, Eff E. Vilm and Gladys M. Vilm his wife, and Earl L. Fraipont and Anita M. Fraipont his wife, have caused the land described in the civil engineers certificate to be platted into lots, blocks and streets to be known as "VILM GARDENS SECOND ADDITION", Sedgwick County, Kansas. Easements are hereby granted as indicated on the plat for the construction and maintenance of all public utilities. The sheets are hereby dedicated to and for the use of the public.

Walter M. Vilm, _____, Anita M. Fraipont, _____
Earl L. Vilm, _____, Earl S. Fraipont, _____

State of Kansas }
County of Sedgwick } ss

Be it remembered that on this 6 day of June, 1953, before me, a notary public came Eff E. Vilm and Gladys M. Vilm his wife, and Earl L. Fraipont and Anita M. Fraipont his wife, to me personally known to be the same persons who executed the foregoing instrument of writing and duly acknowledged the execution of same. In testimony whereof I have hereunto set my hand and affixed my notarial seal the day and year above written.

Edmund Seltz, _____, Notary Public
18447
18447

Kenneth C. Boyer, _____, Civil Engineer

This part of "VILM GARDENS SECOND ADDITION", Sedgwick County, Kansas, has been submitted to and approved by the City Planning Commission of the City of Wichita, Kansas, and is hereby approved by the Board of City Commissioners of the City of Wichita, Kansas with the recommendation that such plat be approved as proposed.
Dated this 19 day of May, 1953
The City Planning Commission of the City of Wichita, Kansas

By _____, Chairman
_____, Secretary
Approved by the Board of City Commissioners this 20th day of May, 1953

Walt Reeb, _____, Mayor
C. S. Anderson, _____, City Clerk
Approved by the Board of City Commissioners this 23rd day of July, 1953

Entered on master record this 27th day of July, 1953.
Edmund Seltz, _____, Notary Public

This is to certify that this instrument was filed in the register of deeds office on the 27th day of July, 1953, at 10 o'clock P.M., and is duly recorded.

C. S. Anderson, _____, Registrar
Henry A. Shivers, _____, Deput.

81-1