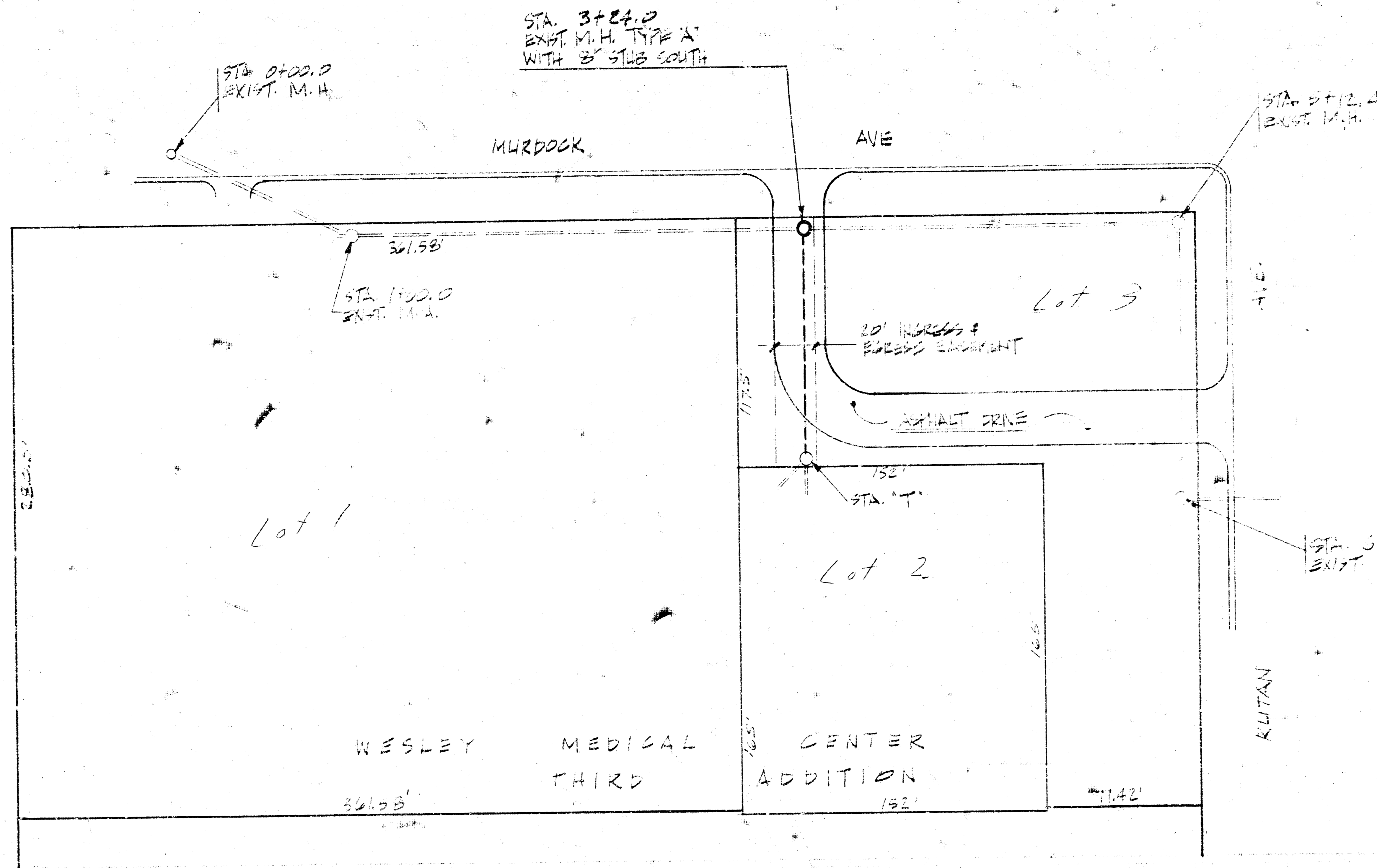


OUTSIDE DROP MANHOLE
TYPE "A" or "C"

HILLSIDE AVE.



STA. 3+24.0
EXIST. M.H. TYPE "A"
WITH 8" SLUB SOUTH

STA. 0+00.0
EXIST. M.H.

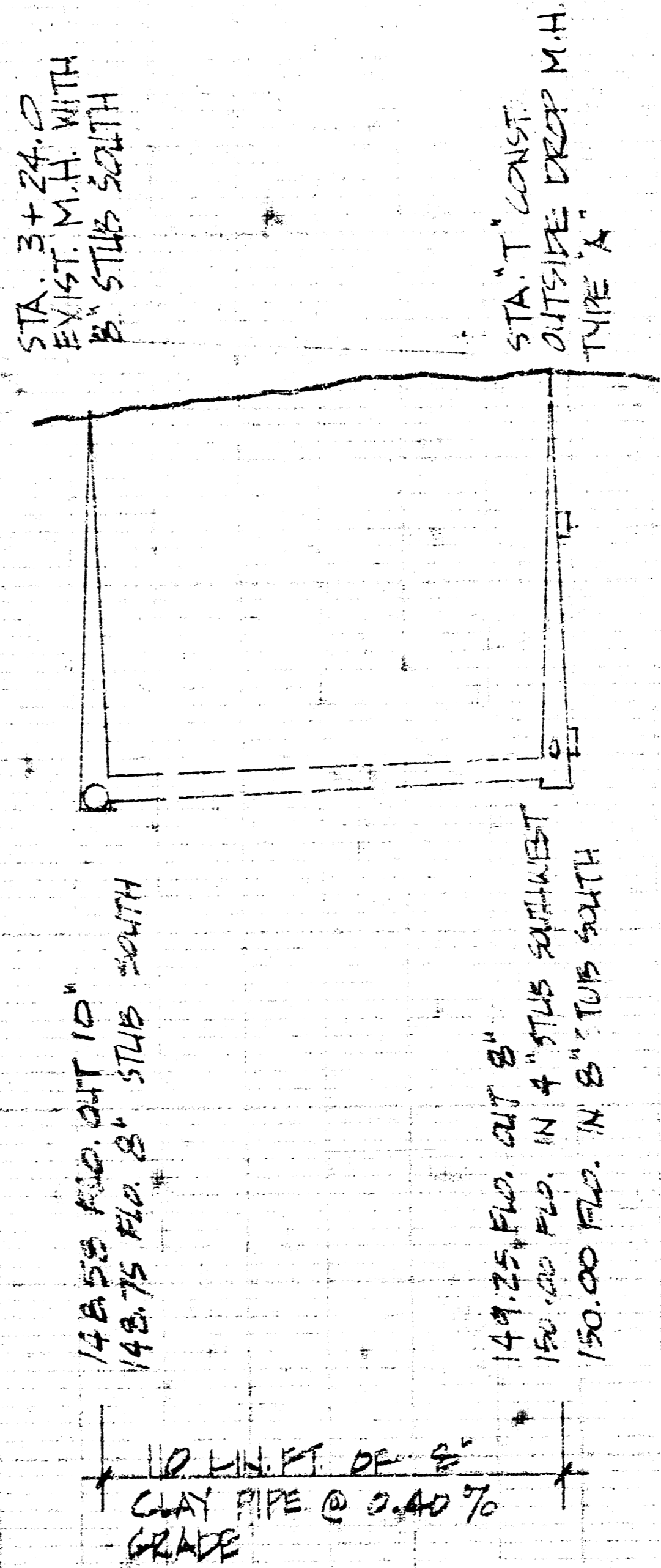
STA. 5+12.2
EXIST. M.H.

STA. 1+00.0
EXIST. M.H.

STA. 5+39.0
EXIST. M.H.

7-9-75
APPROVED AS NOTED
BY CITY ENGINEER OF WICHITA
Sanitary Sewers D. E. S.
Storm Sewers
Driveway Approaches

Central
Air Conditioning Co., Inc.
Mechanical Contractors



148.55 FLD. OUT 10"
148.75 FLD. 8" SLUB SOUTH

149.25 FLD. OUT 8"
150.00 FLD. IN 4" SLUB EXHIBIT
150.00 FLD. IN 8" SLUB SOUTH

10' LIFT OF 8"
CLAY PIPE @ 0.40%
GRADE

GENERAL NOTES:
1. ALL PIPING PER CITY
OF WICHITA STANDARDS
2. ALL EXCAVATION PER
CITY STANDARDS
3. ALL MANHOLE PER CITY
OF WICHITA STANDARDS

ADDITION TO A PART OF
DIST. M. S. S. NO. 12
CITY OF WICHITA, KANSAS
PROJECT NO. DRW 205 P. 2