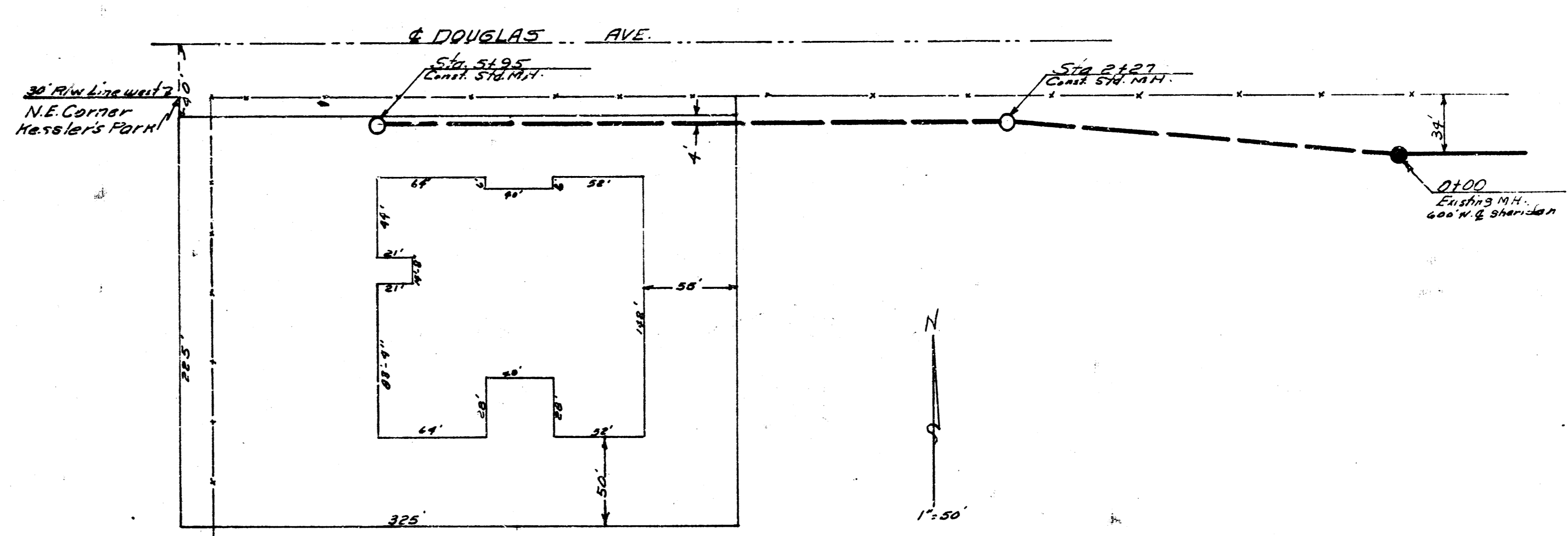
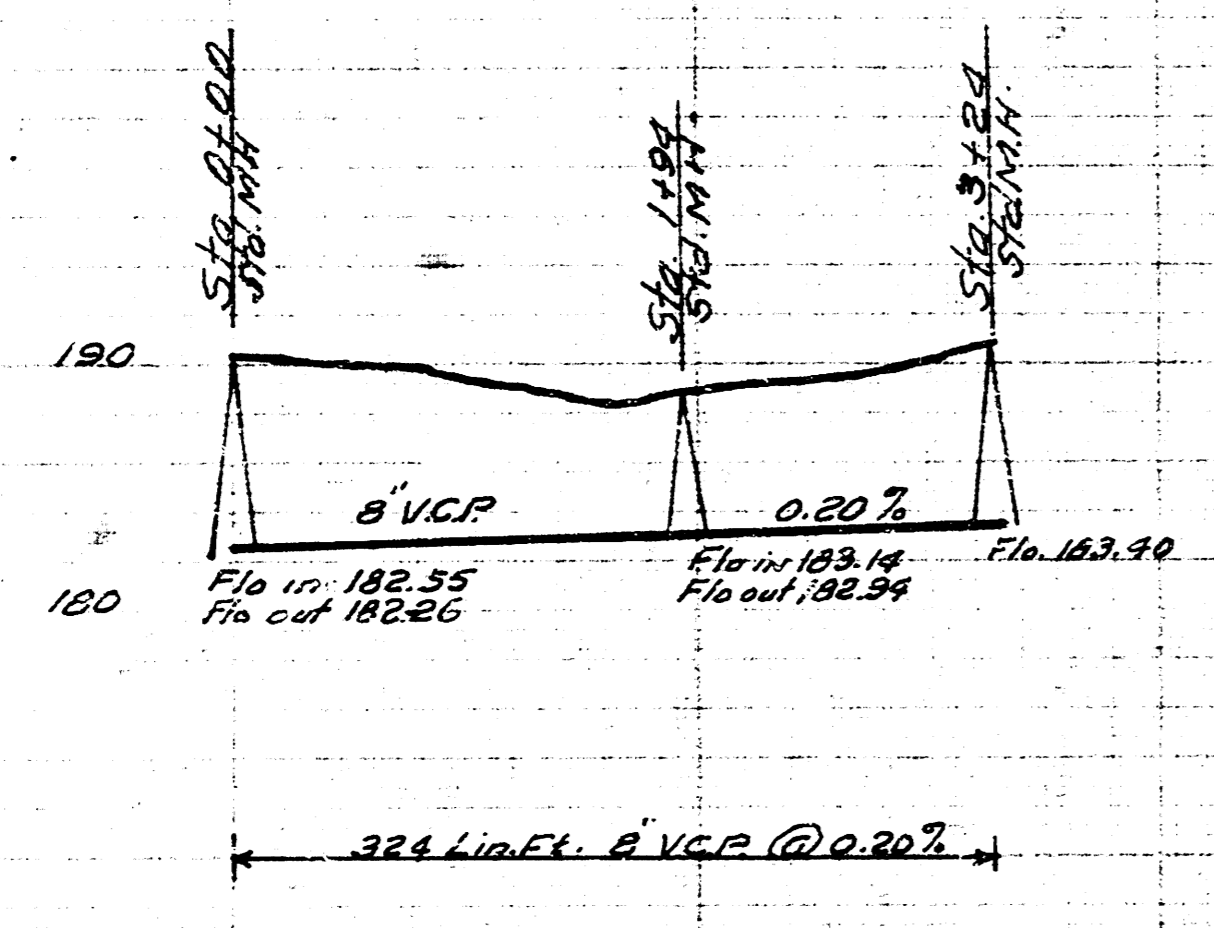


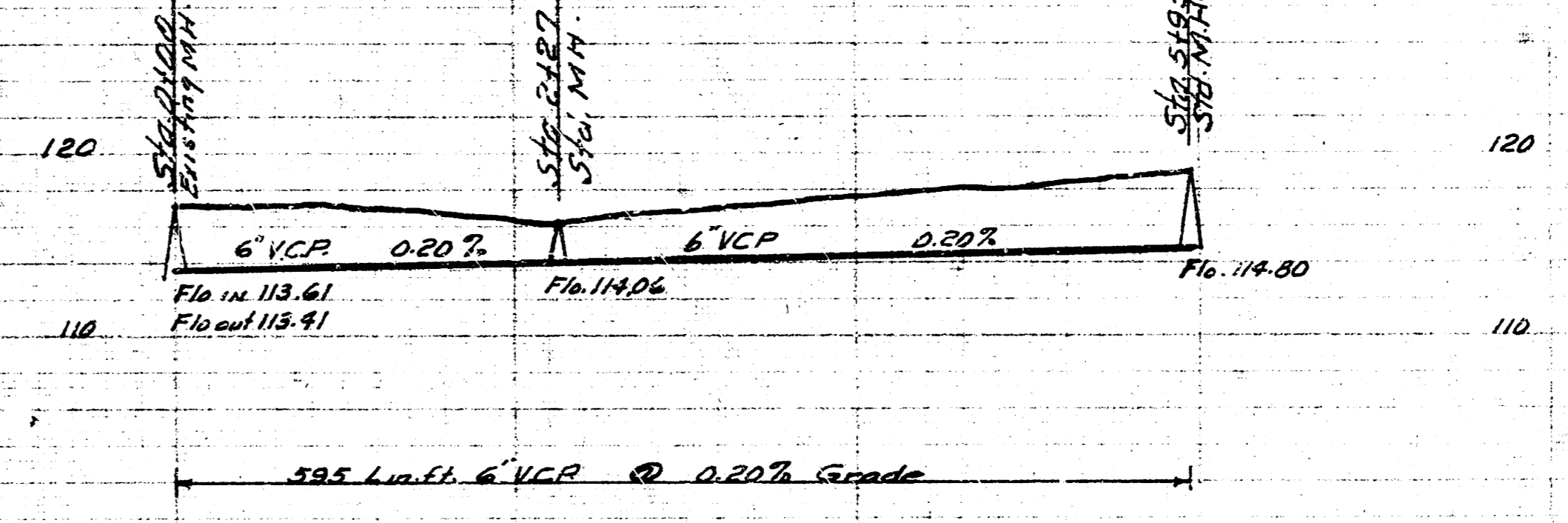
NOTE TO CONTRACTOR
 This project will be constructed under the supervision of the CITY ENGINEER and conforming to the SPECIFICATIONS of the CITY OF WICHITA. THE CONTRACTOR WILL REIMBURSE THE CITY OF WICHITA FOR ALL COSTS OF ENGINEERING, PLANS, AND INSPECTION.



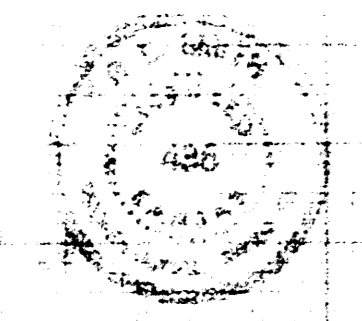
BM. 100.95 West rim NH & Elm West of Edgemoor



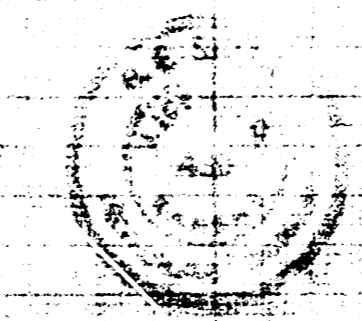
BM. 115.10 10' on radius SW. cor. Sheridan & Douglas



Date 10-6-59
 Plan by M. C. Klein
 Checked by B. E. Smith
 Book No. 31-31



EAST ARMORY SAN SEWER
CITY OF WICHITA KANSAS
 B. E. SMITH CITY ENGINEER
 Private Contract



EAST ARMORY SAN SEWER
CITY OF WICHITA KANSAS
 B. E. SMITH CITY ENGINEER
 Private Contract