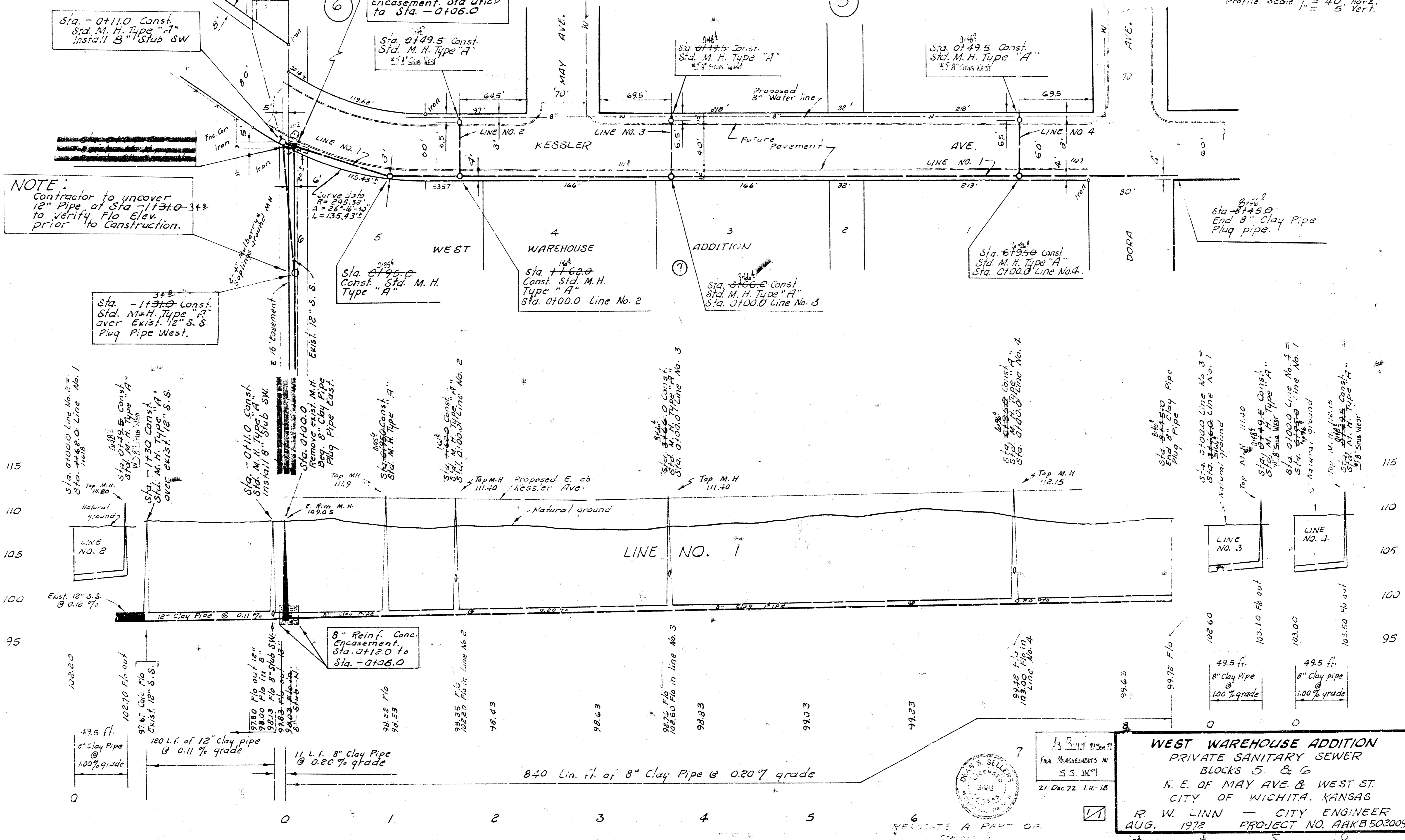


A. M. 102.82 R.R. Spk. S.S. H.L.P. 30' S. of N.L. 1
 1/2 mi. Ind. Adn. 4 70' E. of West St.

B. M. 109.07 R.R. Spk. E. face P.P. 30.5' N. of Ctr.
 May St. 38.9' W. of Ctr. West St.

C. M. 111.58 R.R. Spk. W. face tele. Pole NE cor.
 Dora and West.

Plan Scale 1" = 40'
 Profile Scale 1" = 4' Vert.

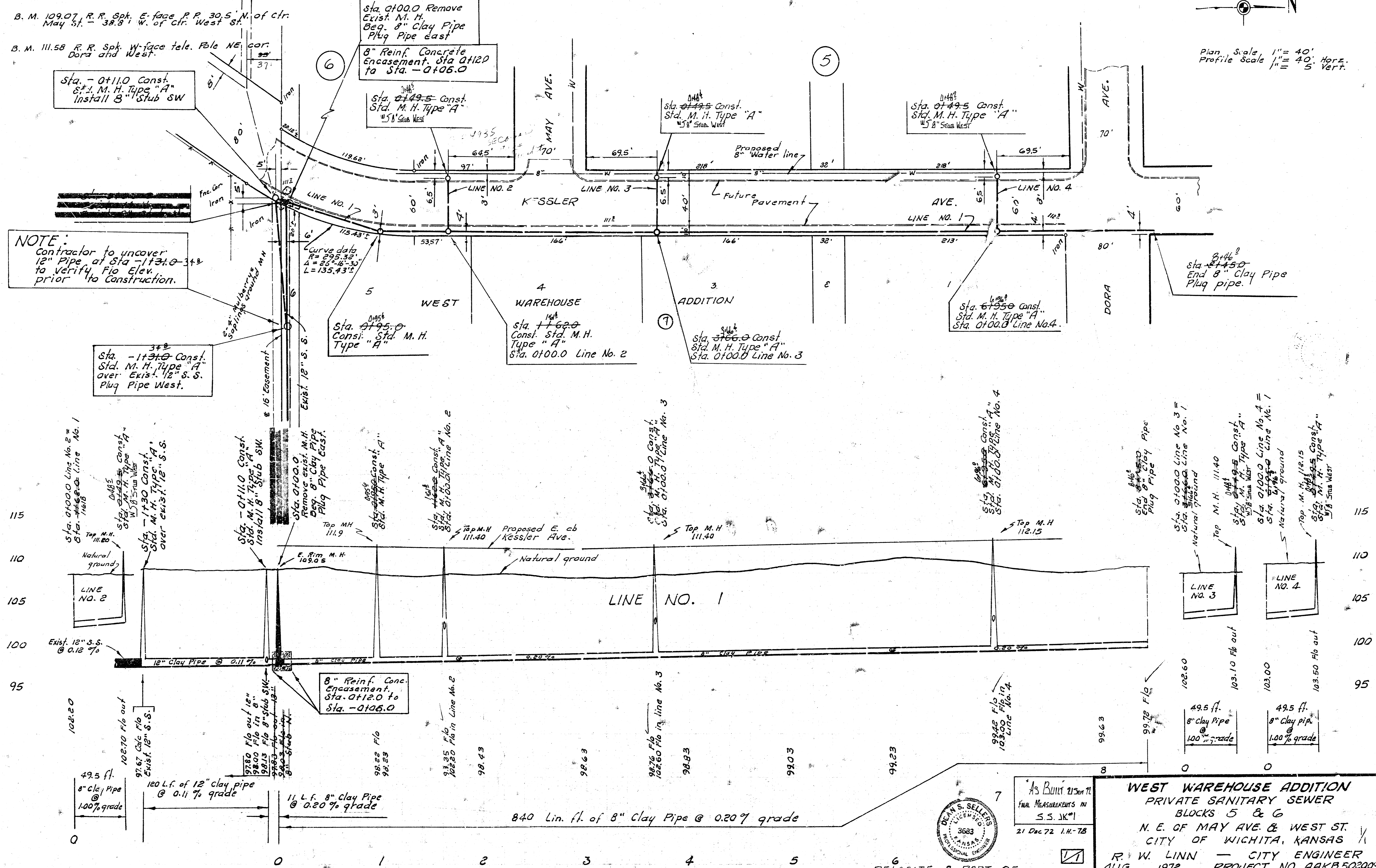


B. M. 109.82 R. R. Sph. S.S. H.L.P. 30' S. of N.L.
 Alcorn Ind. Bldg. 4 70' E. of West St.

B. M. 109.07 R. R. Sph. E. face P.P. 30.5' N. of ctr.
 May St. - 38.8' W. of ctr. West St.

B. M. 111.58 R. R. Sph. W. face tele. Pole NE. cor.
 Dora and West.

Plan Scale 1" = 40'
 Profile Scale 1" = 40' Horiz.
 1" = 5' Vert.



NOTE:
 Contractor to uncover
 12" Pipe at Sta. 113.0-348
 to verify Fio Elev.
 prior to construction.

Sta. -113.0 Const.
 Std. M. H. Type "A"
 over Exist. 12" S.S.
 Plug Pipe West.

Sta. 0+100.0 Remove
 Exist. M. H.
 Beg. 8" Clay Pipe
 Plug Pipe east

Sta. 0+149.5 Const.
 Std. M. H. Type "A"
 15' Sub West

Sta. 0+149.5 Const.
 Std. M. H. Type "A"
 15' Sub West

Sta. 0+149.5 Const.
 Std. M. H. Type "A"
 15' Sub West

Sta. 0+100.0 Const.
 Std. M. H. Type "A"
 Sta. 0+100.0 Line No. 4.

Sta. 0+450
 End 8" Clay Pipe
 Plug pipe.

Sta. 0+195.0
 Const. Std. M. H.
 Type "A"

Sta. 0+160.0
 Const. Std. M. H.
 Type "A"
 Sta. 0+100.0 Line No. 2

Sta. 0+160.0 Const.
 Std. M. H. Type "A"
 Sta. 0+100.0 Line No. 3

Sta. 0+100.0 Line No. 2 =
 Sta. 0+100.0 Line No. 1

Sta. 0+110.0 Const.
 Std. M. H. Type "A"
 15' Sub West

Sta. 0+130.0 Const.
 Std. M. H. Type "A"
 over exist. 12" S.S.

Sta. 0+110.0 Const.
 Std. M. H. Type "A"
 Install 8" Sub SW

Sta. 0+100.0
 Remove exist. M.H.
 8" Clay Pipe
 Plug Pipe East.

Sta. 0+100.0 Const.
 Std. M. H. Type "A"

Sta. 0+140.0 Const.
 Std. M. H. Type "A"
 Sta. 0+100.0 Line No. 2

Sta. 0+100.0 Const.
 Std. M. H. Type "A"
 Sta. 0+100.0 Line No. 3

Sta. 0+100.0 Const.
 Std. M. H. Type "A"
 Sta. 0+100.0 Line No. 4

Sta. 0+100.0 Line No. 3 =
 Sta. 0+100.0 Line No. 1

Sta. 0+149.5 Const.
 Std. M. H. Type "A"
 15' Sub West

Sta. 0+100.0 Line No. 4 =
 Sta. 0+100.0 Line No. 1

Sta. 0+110.0 Const.
 Std. M. H. Type "A"
 15' Sub West

Sta. 0+100.0 Line No. 3 =
 Sta. 0+100.0 Line No. 1

Sta. 0+100.0 Line No. 4 =
 Sta. 0+100.0 Line No. 1

Sta. 0+100.0 Line No. 3 =
 Sta. 0+100.0 Line No. 1

Sta. 0+100.0 Line No. 4 =
 Sta. 0+100.0 Line No. 1

Sta. 0+100.0 Line No. 3 =
 Sta. 0+100.0 Line No. 1



As Built 21 Dec 72
 FINAL MEASUREMENTS IN
 S.S. JK#1
 21 Dec 72 I.H.-78

WEST WAREHOUSE ADDITION
 PRIVATE SANITARY SEWER
 BLOCKS 5 & 6
 N. E. OF MAY AVE. & WEST ST.
 CITY OF WICHITA, KANSAS
 R. W. LINN - CITY ENGINEER
 AUG. 1972 PROJECT NO. AAKB 502009

RELOCATE A PART OF
 STA 0100.0
 NOV. 1972