

CENTRAL

AVE

NE Cor. NE
Sec. 20-27

201.96'

624.37'

469.83'

150'

150'

150'

RD

TYLER

Scale: H
V

AVE.

WESTLINK

25' Type 'C'
Access Easement

R=388.71'
L=135.05'
Δ=28°05'

Sta 0+00 Connect
To Exist. Manhole

Future Storm
Sewer Extension

Proposed
Pizza Hut

ST-21-R
Sta 4+00 Const.
Std. Type 'A' or 'C' MH
with 4" Stub N.

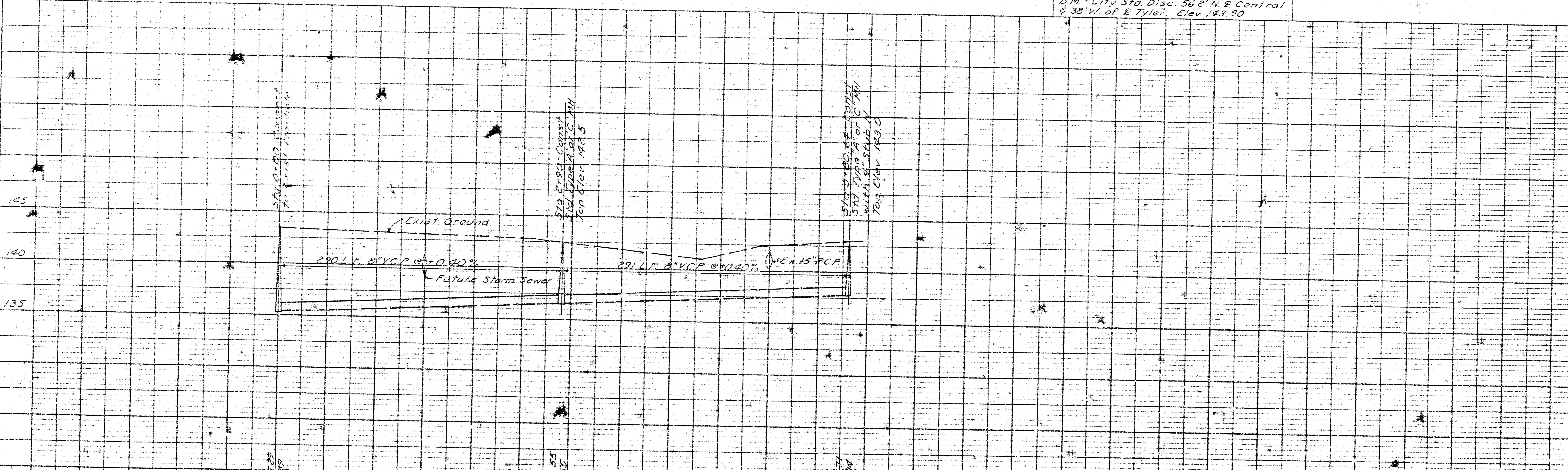
2+92.3
Sta 2+90 Const.
Std. Type 'A' or 'C' MH

LOT 1, WESTLINK CENTER

1-7-76

APPROVED FOR THE
By CITY ENGINEER
Sanitary Sewer D.E.S.
Storm Sewer _____
Drawn by _____

B.M. - City Std. Disc. 56.2' N. & Central
& 38' W. of E. Tyler. Elev. 143.90



Sta 0+00 Connect
To Exist. Manhole

Sta 2+90 Const.
Std. Type 'A' or 'C' MH
700 Elev. 142.5

Sta 4+00 Const.
Std. Type 'A' or 'C' MH
with 4\"/>

Exist. Ground

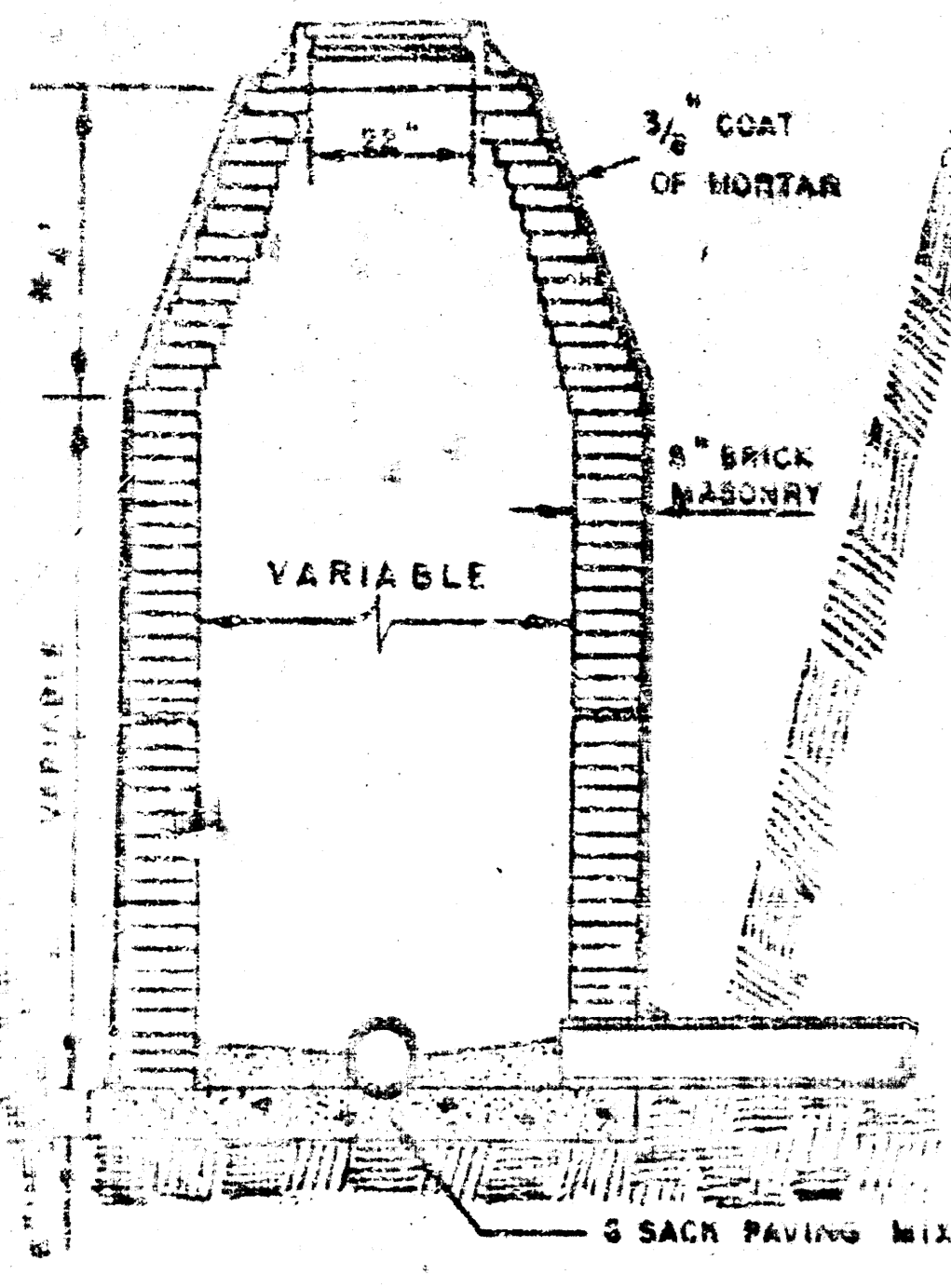
290.1 LF 8\"/>

Future Storm Sewer

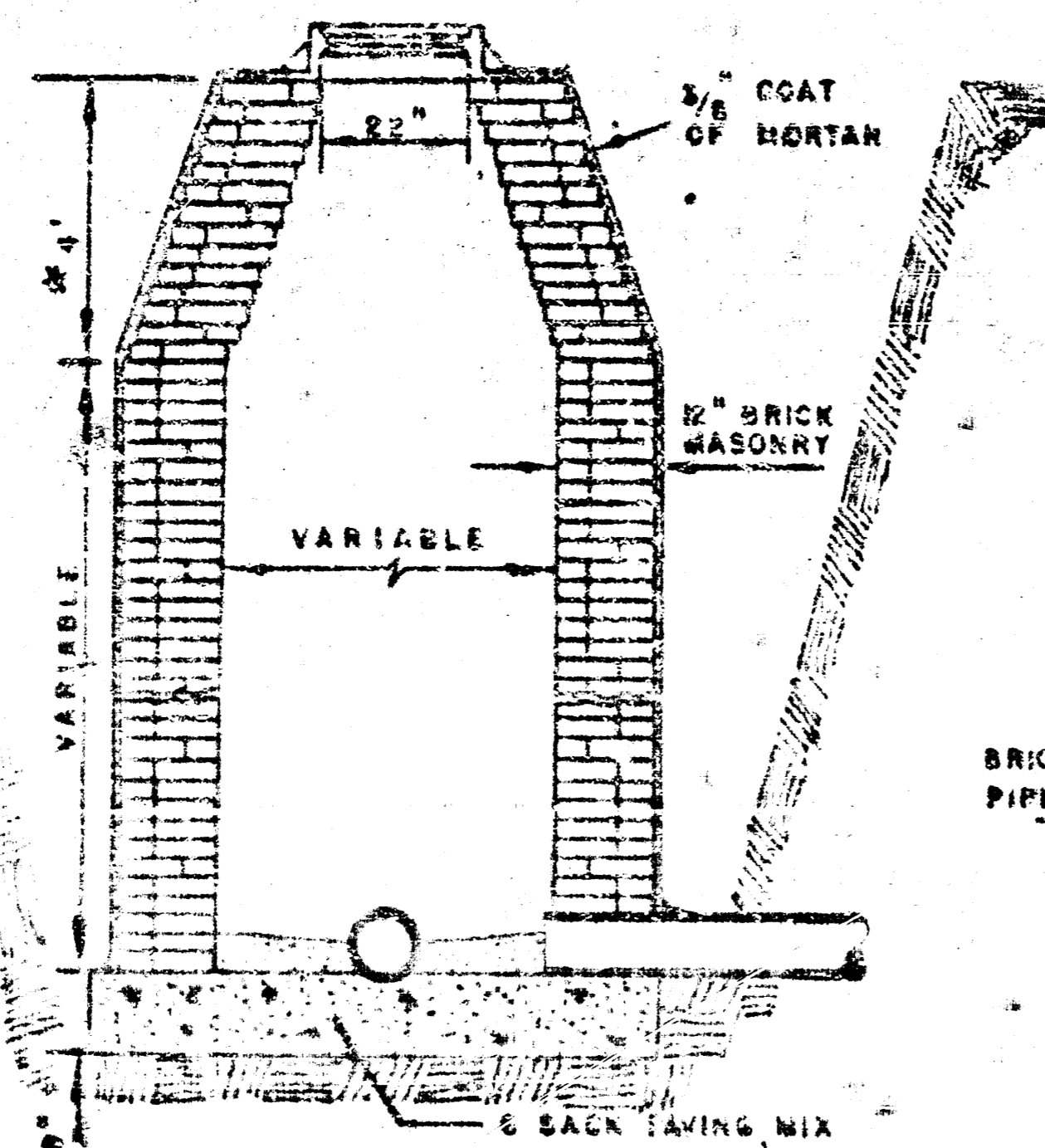
291.1 LF 8\"/>

EX 15\"/>

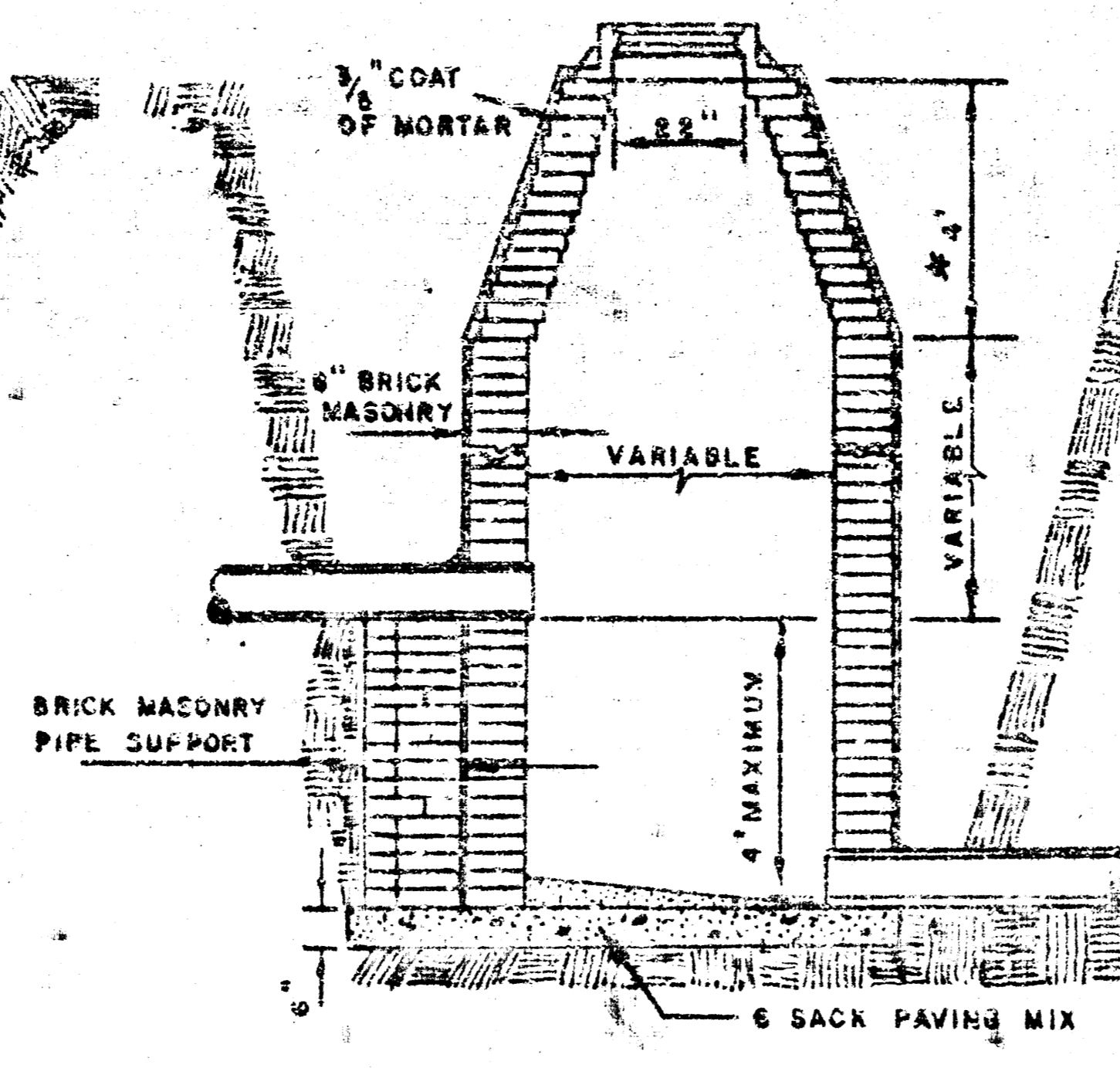
PROFILE
DATE 1-7-76
BY D.E.S.
CHECKED BY _____
NO. _____



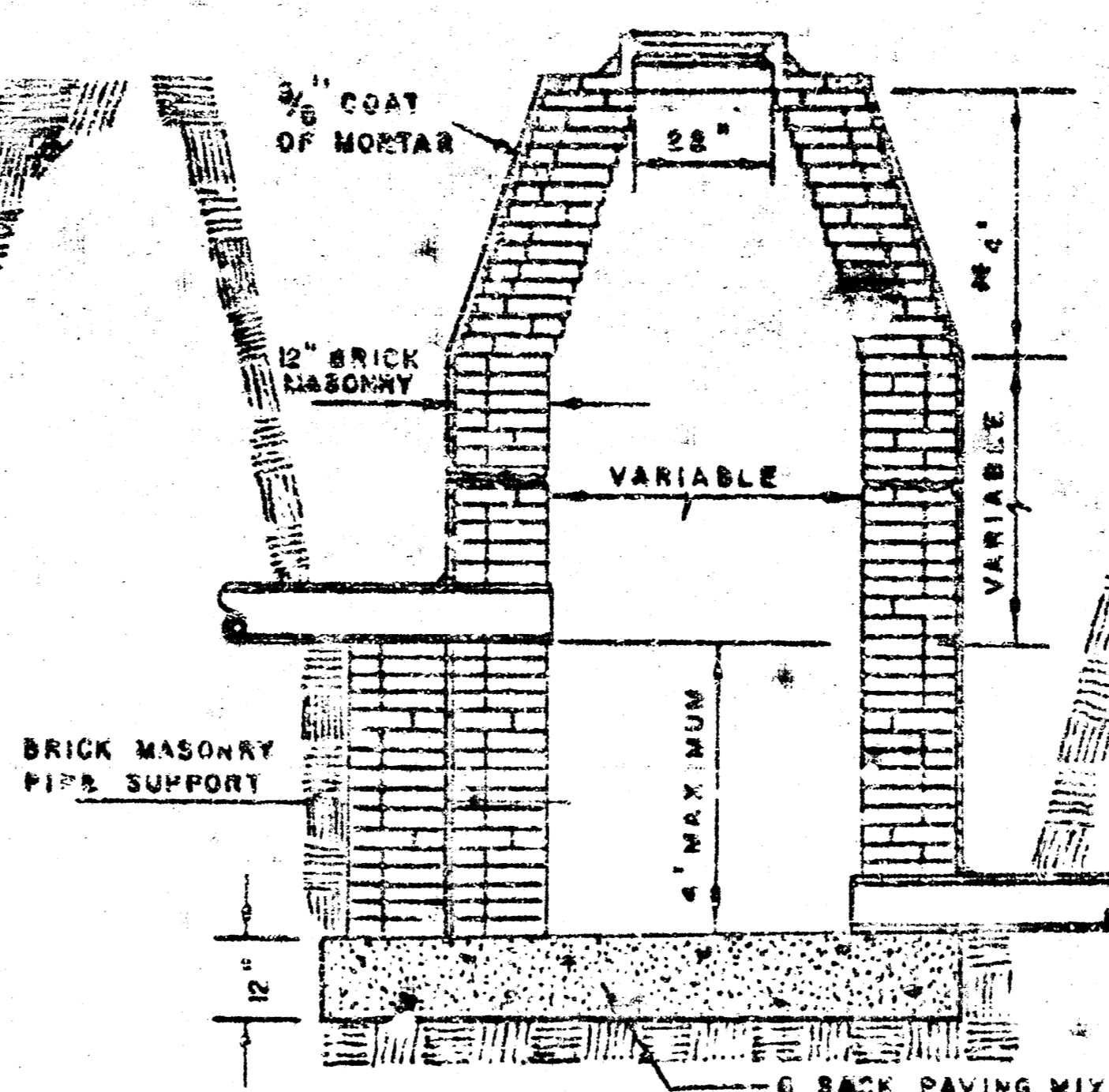
STANDARD MANHOLE
TYPE "A"



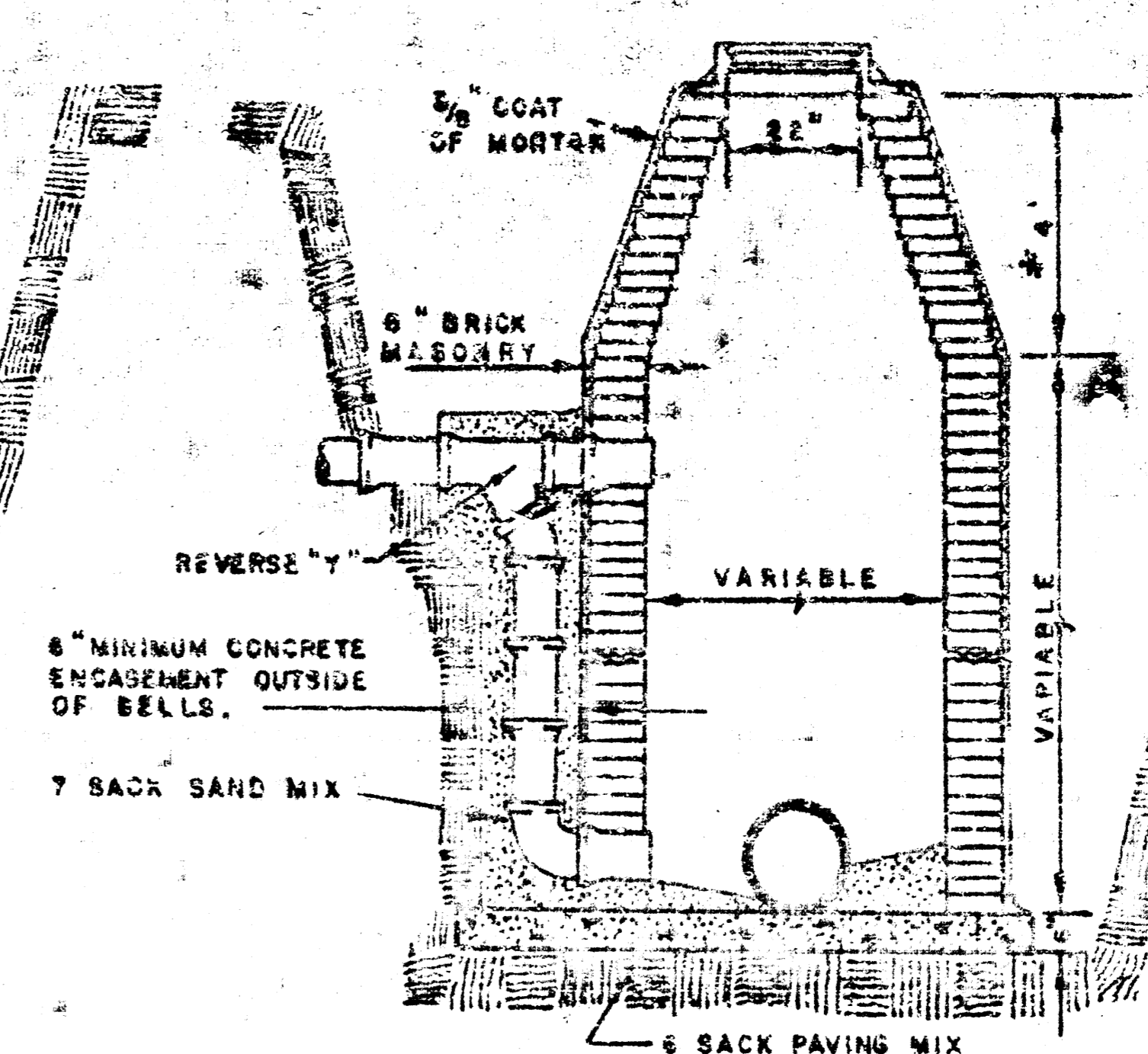
STANDARD MANHOLE
TYPE "B"



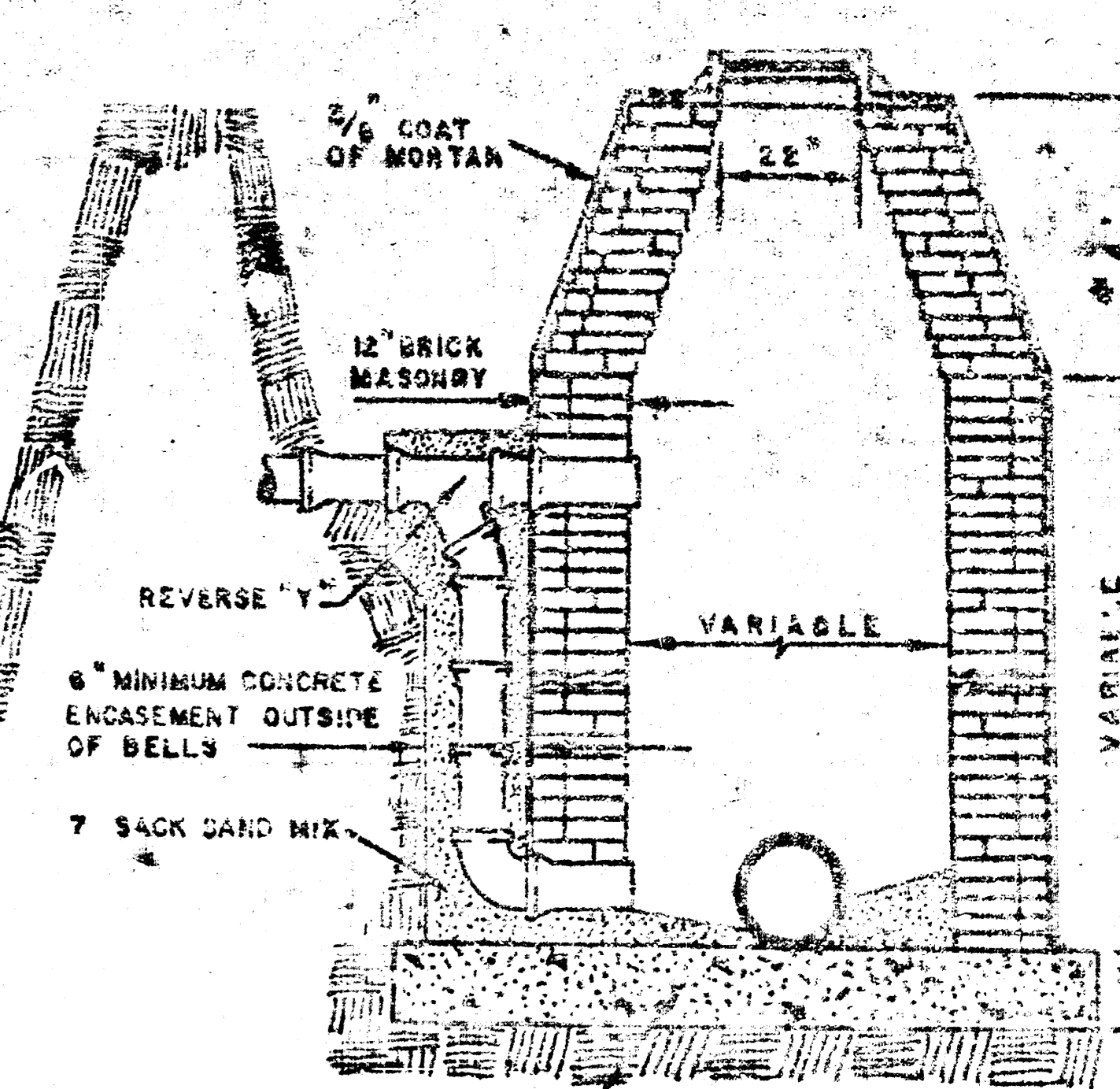
DROP MANHOLE
TYPE "A"



DROP MANHOLE
TYPE "B"

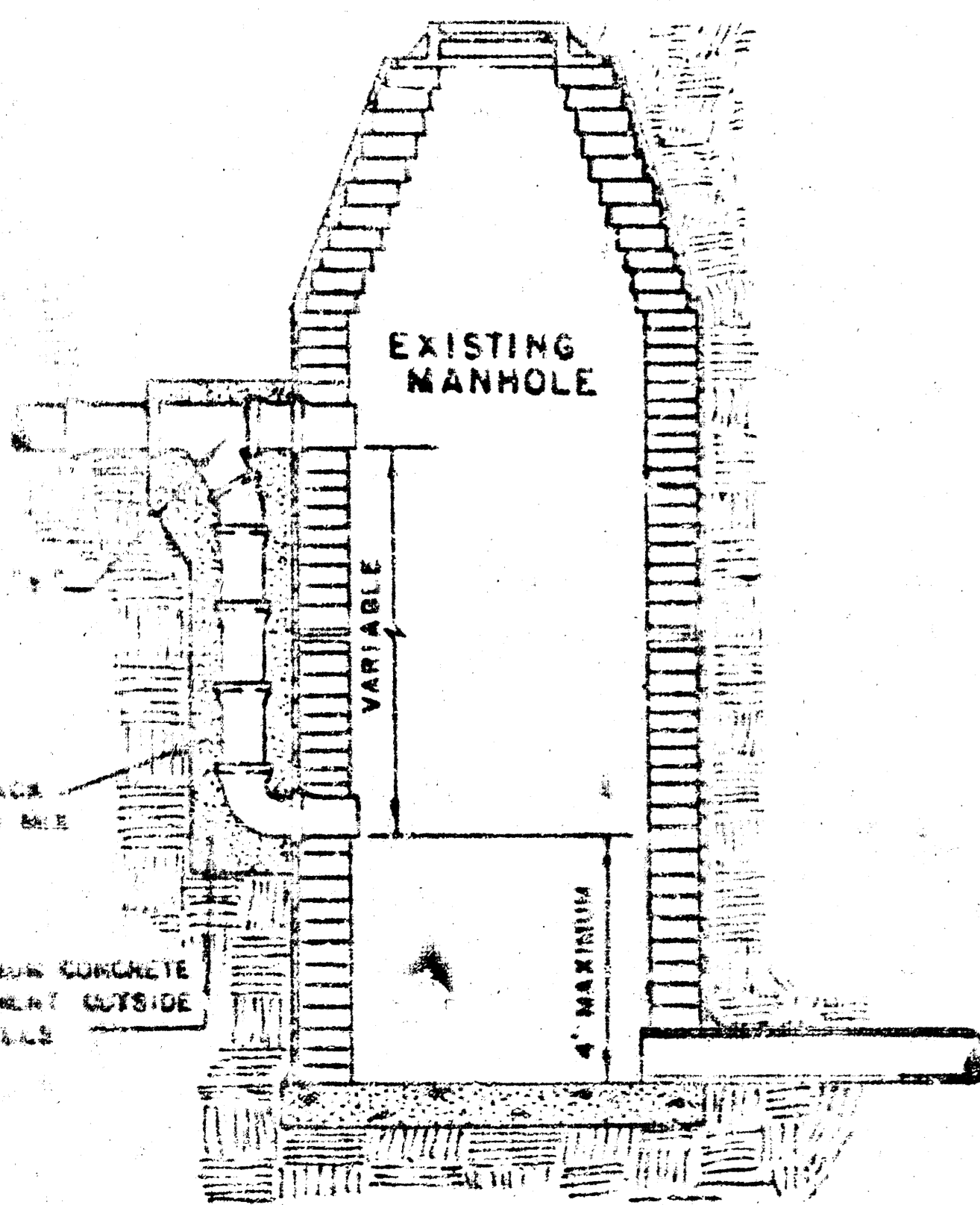


OUTSIDE DROP MANHOLE
TYPE "A"



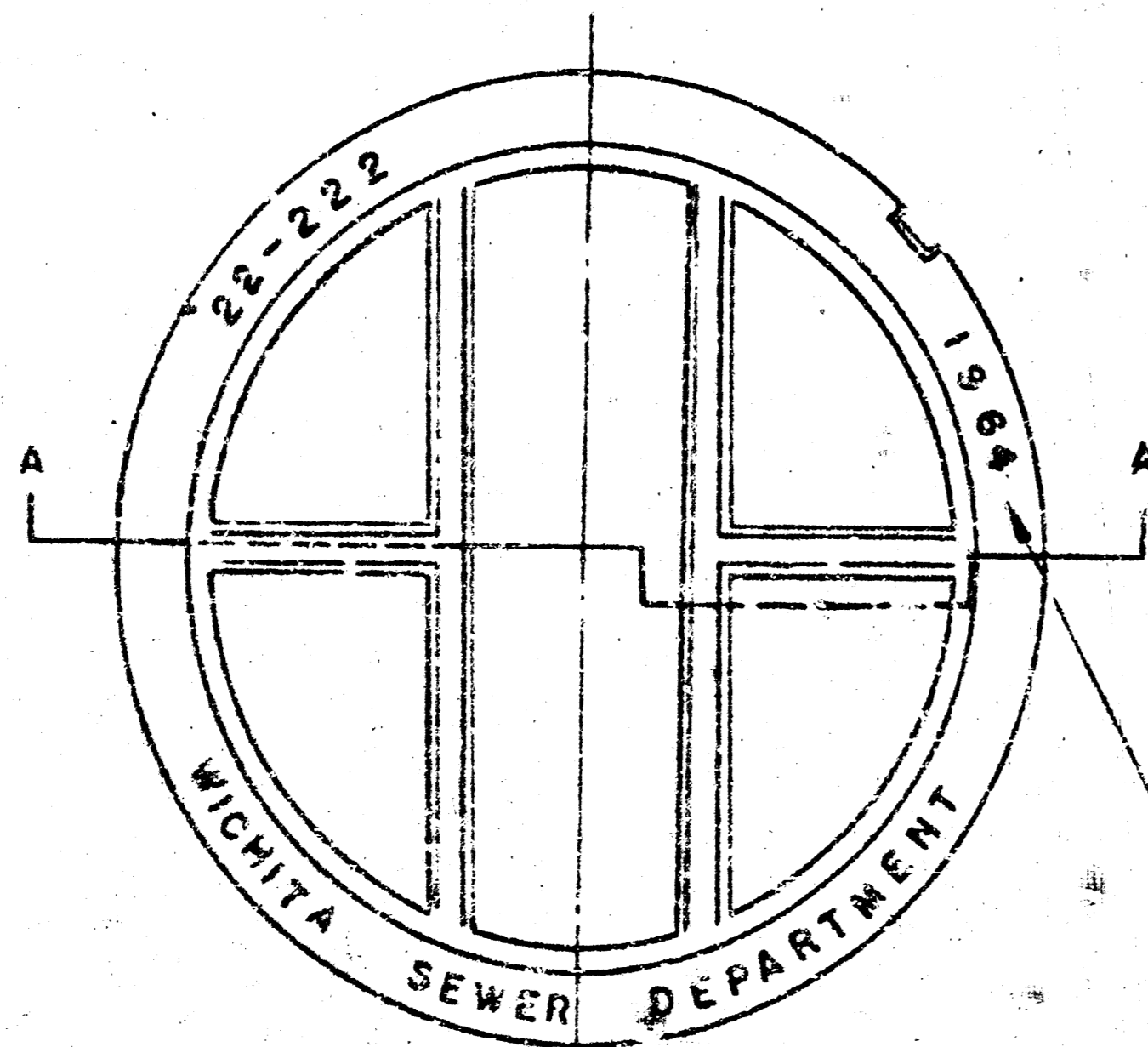
OUTSIDE DROP MANHOLE
TYPE "B"

* DRAW - 6' ON 5' DIA. M.H.

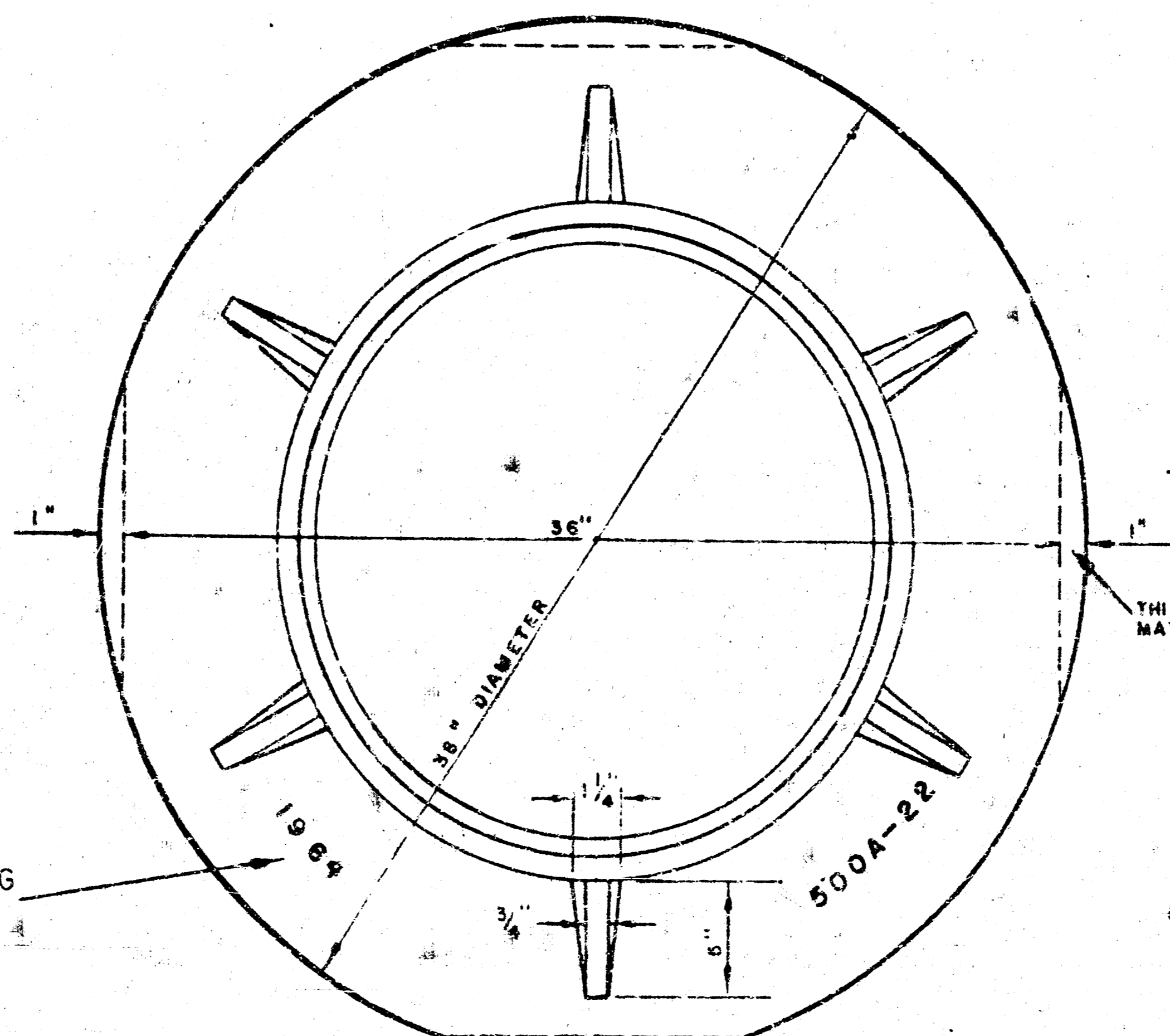


DETAIL OF DROP STACK

FOR EXISTING MANHOLES IN GROUND WATER



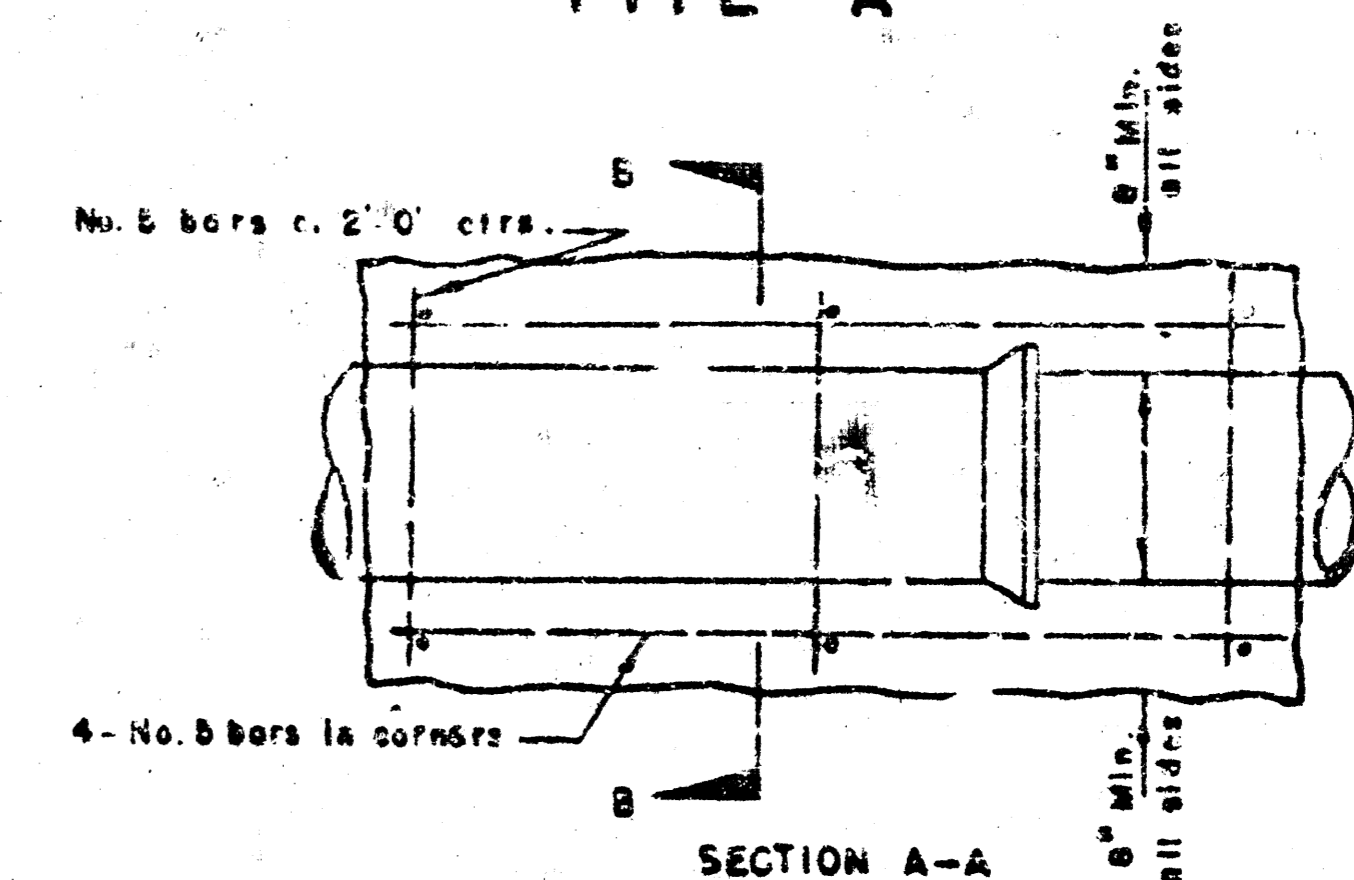
TOP VIEW
MANHOLE COVER
WEIGHT 110 lbs.



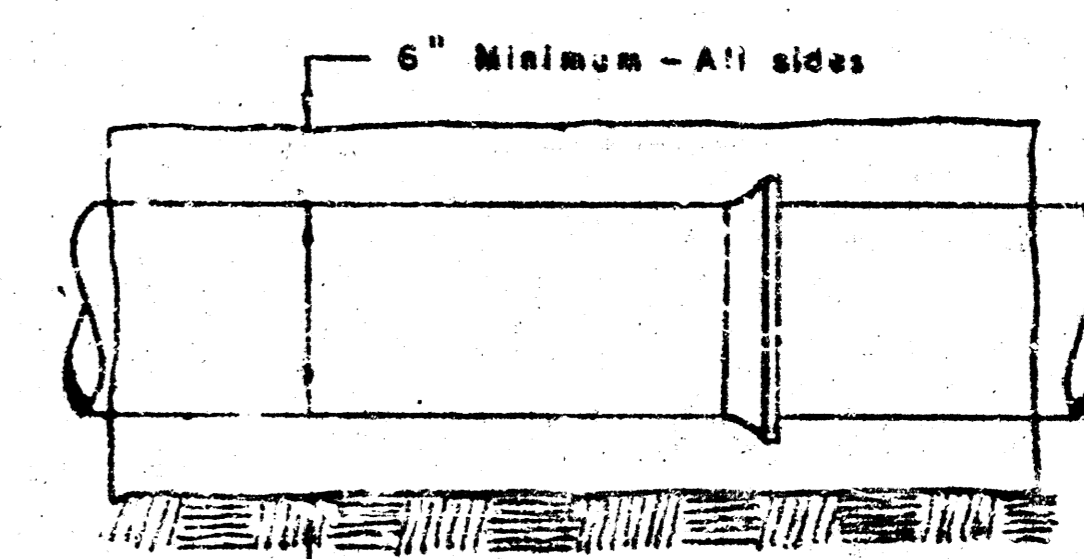
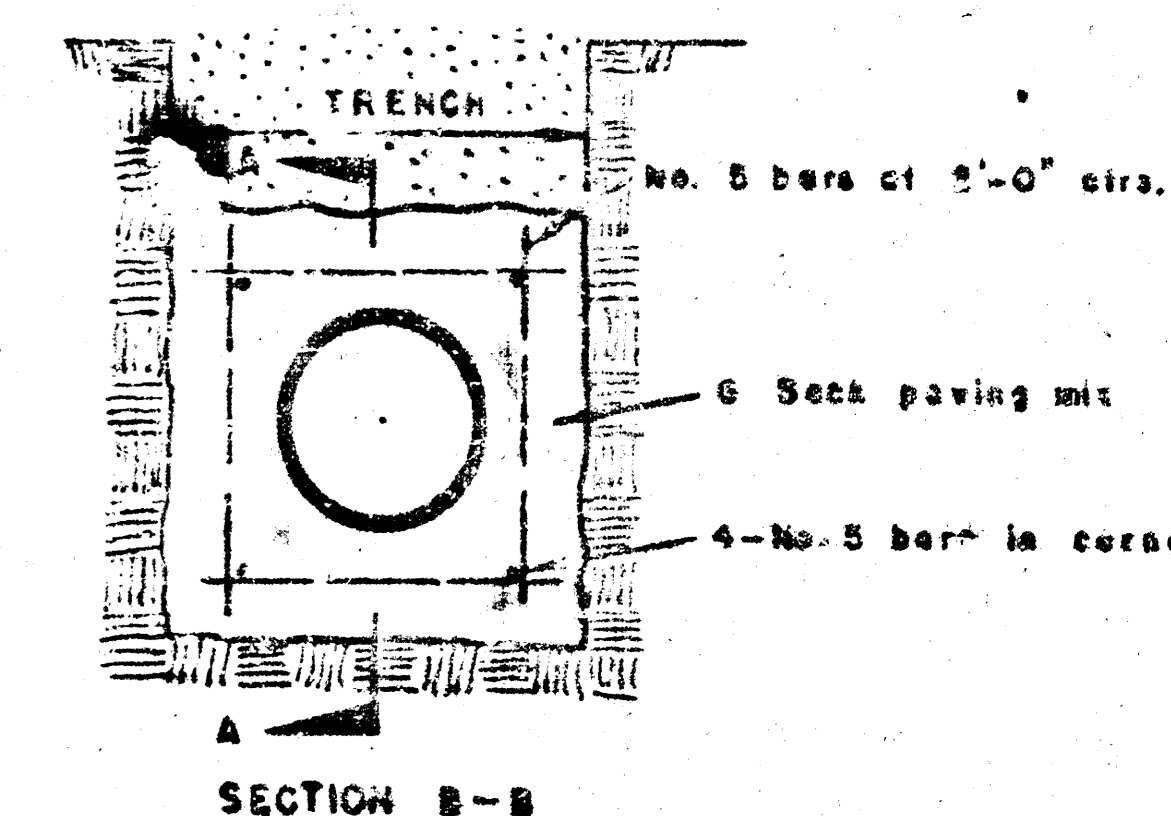
TOP VIEW
MANHOLE RING
WEIGHT 355 lbs.

YEAR CASTING IS MADE

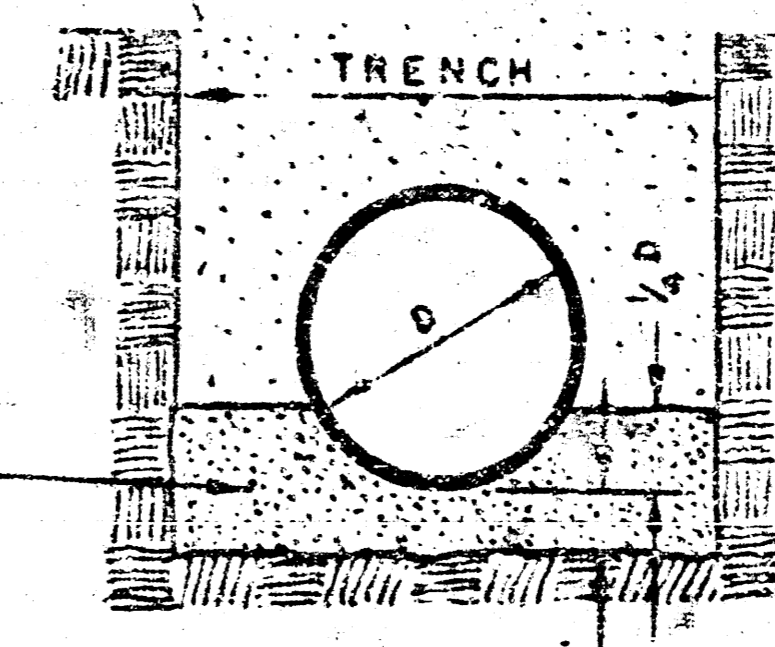
THIS PORTION OF FLANGE MAY BE OMITTED.



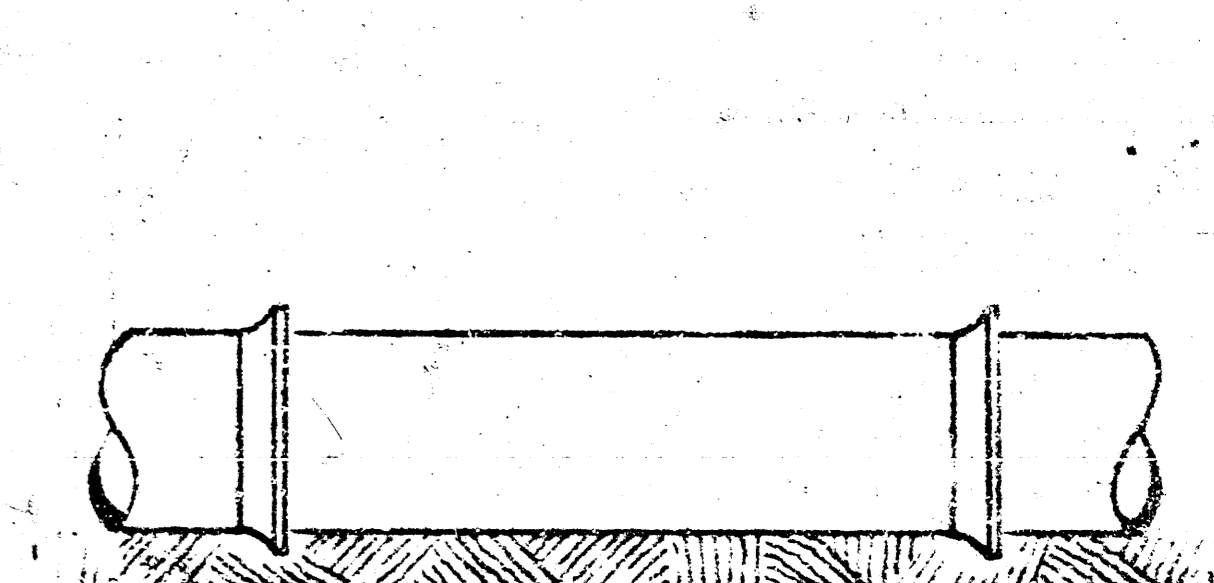
SECTION A-A
REINFORCED CONCRETE ENCASEMENT
FOR STRENGTH



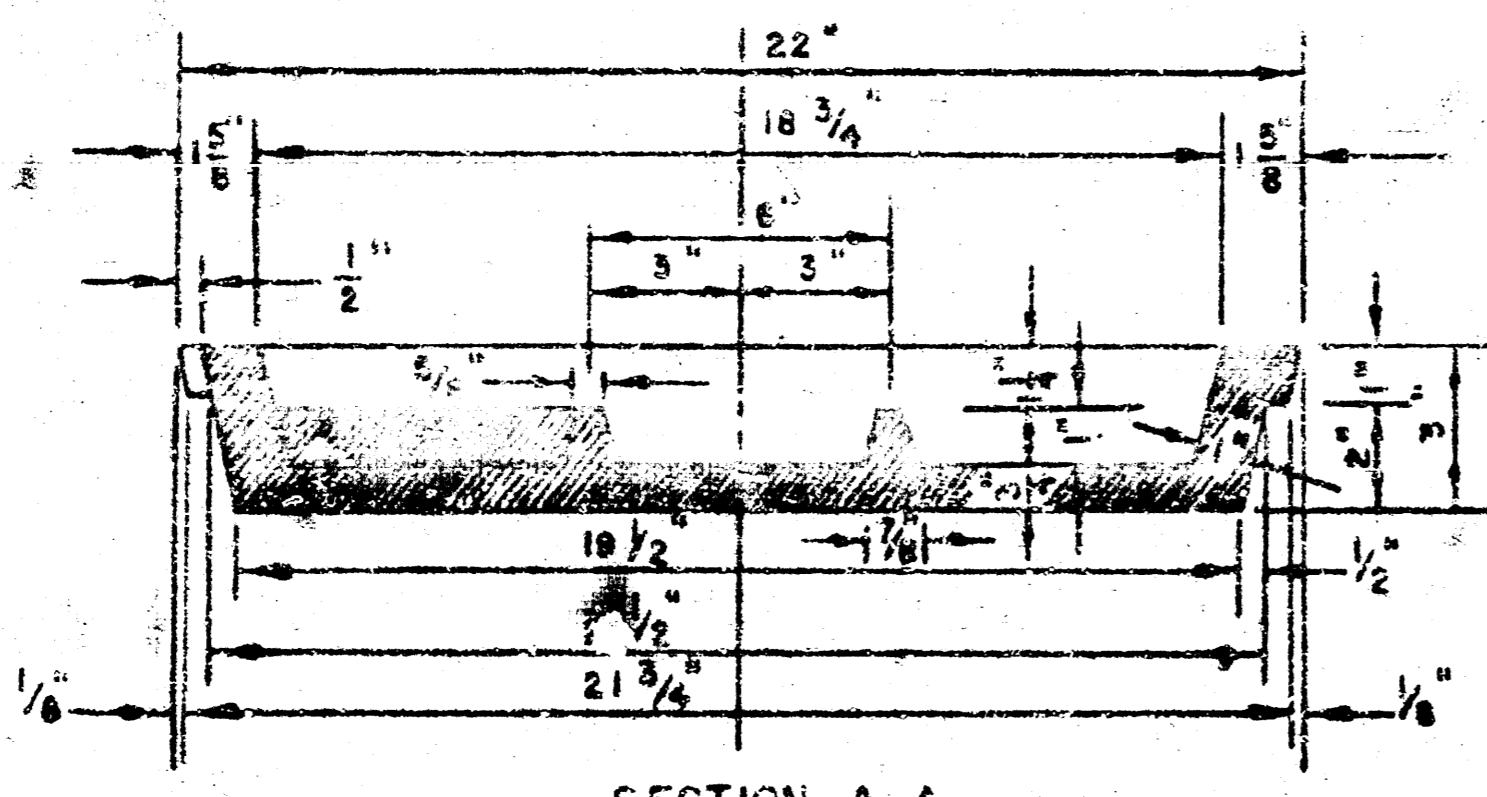
CONCRETE ENCASEMENT
FOR COVER



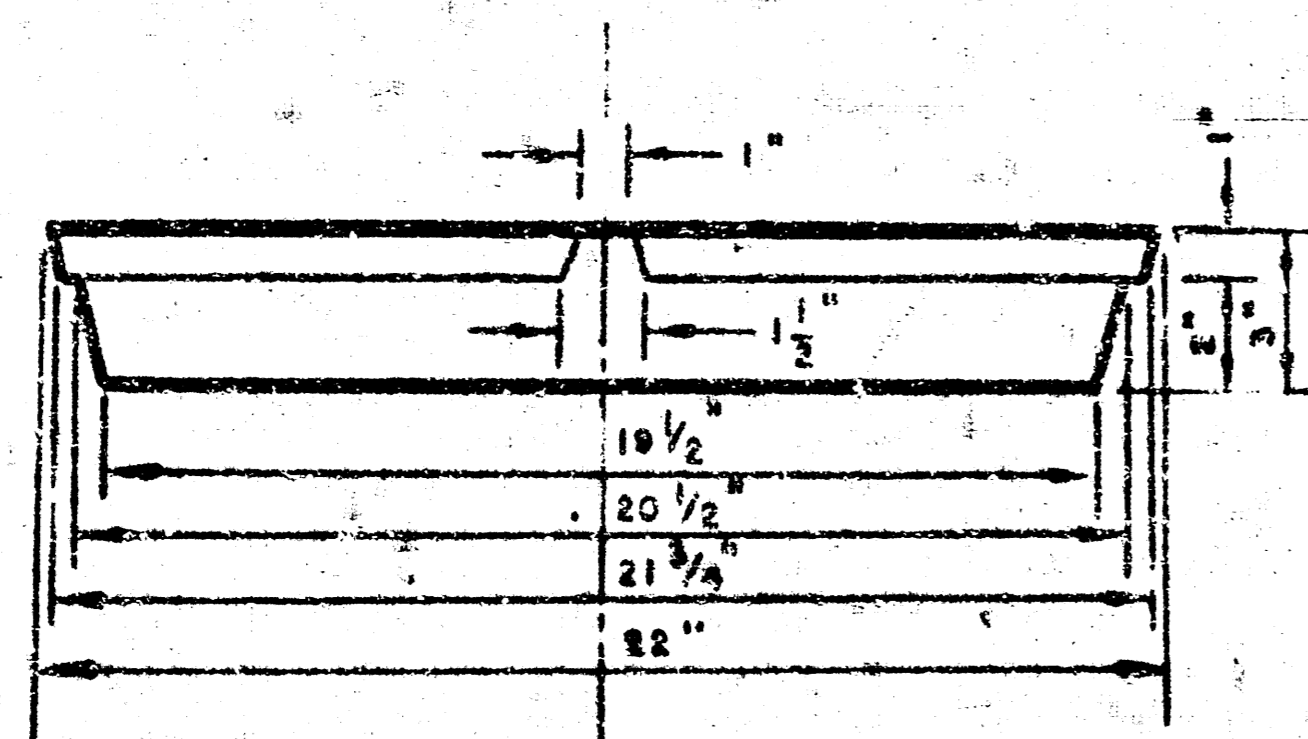
DETAIL OF CONCRETE CRADLE



ORDINARY BEDDING METHOD
FOR CLAY PIPE



SECTION A-A
MANHOLE COVER



SECTION
MANHOLE RING

OUTSIDE CIRCUMFERENCE OF COVER
AND THE INNER FACE AND SEAT OF

MANHOLES

THE CONCRETE USED FOR MORTAR IN MANHOLES SHALL CONTAIN 8 SACKS OF CEMENT PER CUBIC YARD.

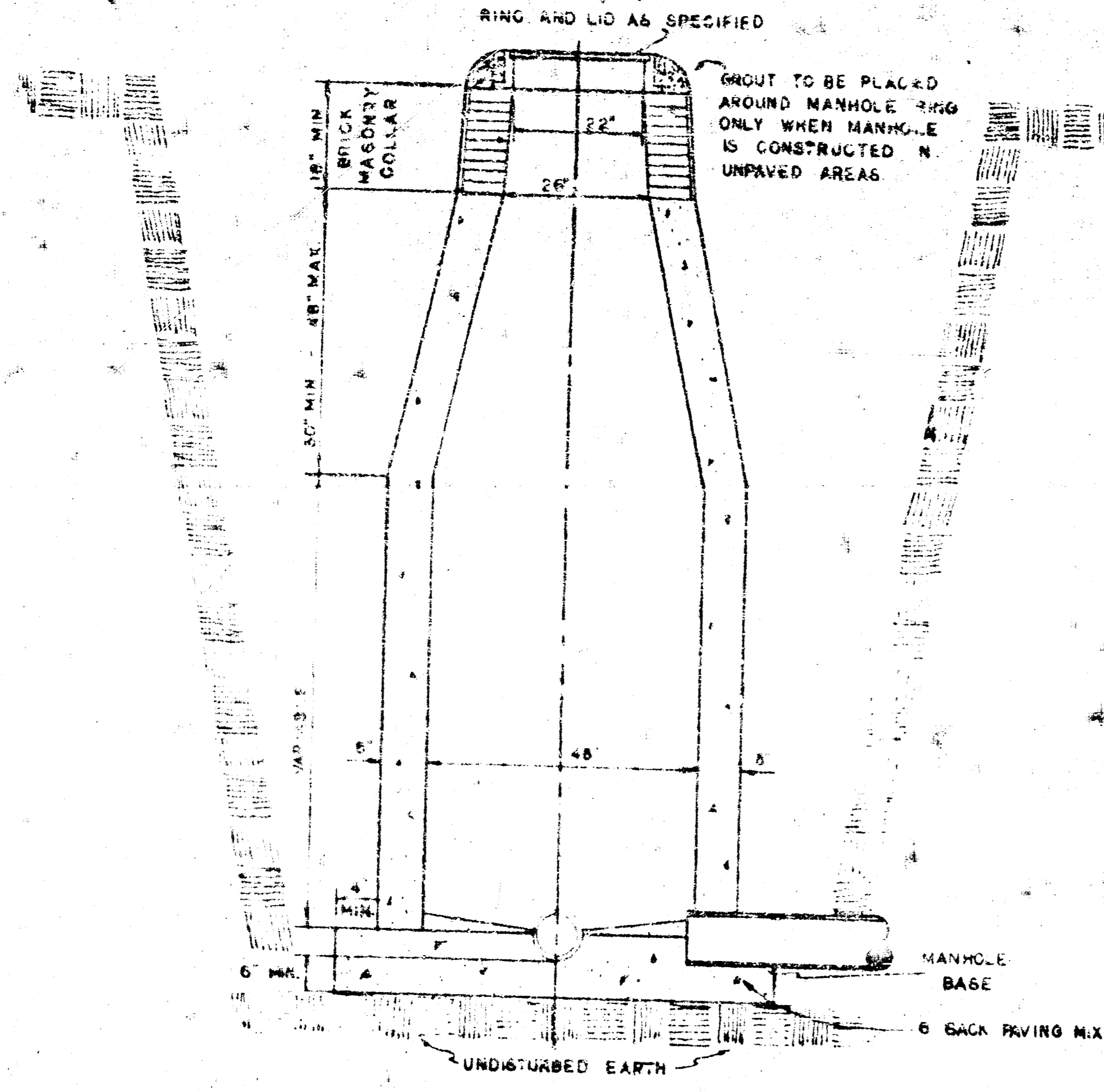
STANDARD MANHOLES AND DROP MANHOLES, REGARDLESS OF DIAMETER, SHALL BE BID AT ONE PRICE AS STANDARD MANHOLES.

SINGLE OR DOUBLE OUTSIDE DROP MANHOLES SHALL BE BID AT ONE PRICE AS OUTSIDE DROP MANHOLES.

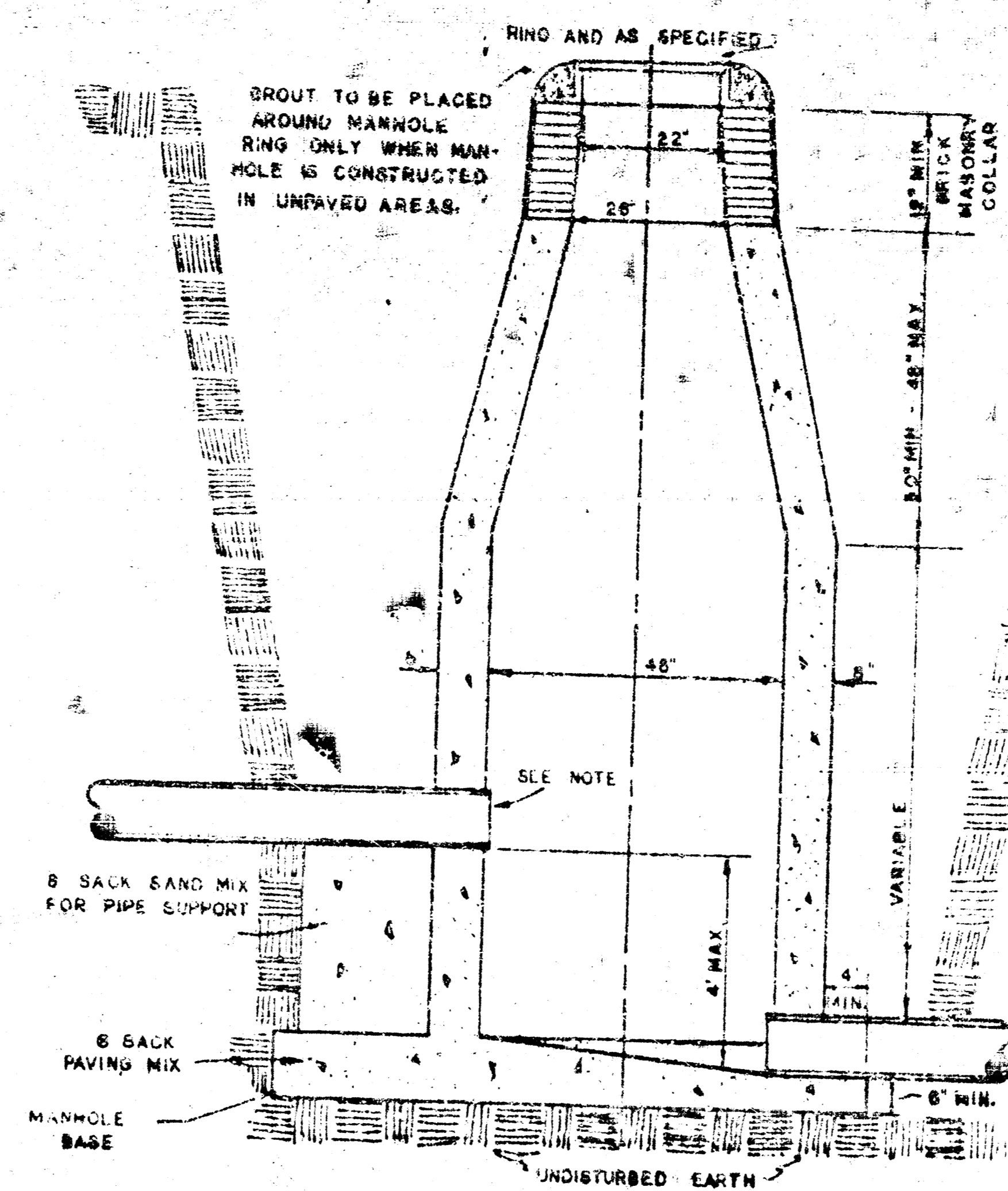
ALL MANHOLES WITH PIPES LARGER THAN 24" SHALL BE 5' DIAMETER UNLESS OTHERWISE SPECIFIED ON PLAN. ALL M.H.'S

DETAILS OF
SEWER APPURTENANCES
ADOPTED AS STANDARD DESIGN
BY
ENGINEERING DIVISION
CITY OF WICHITA, KANSAS

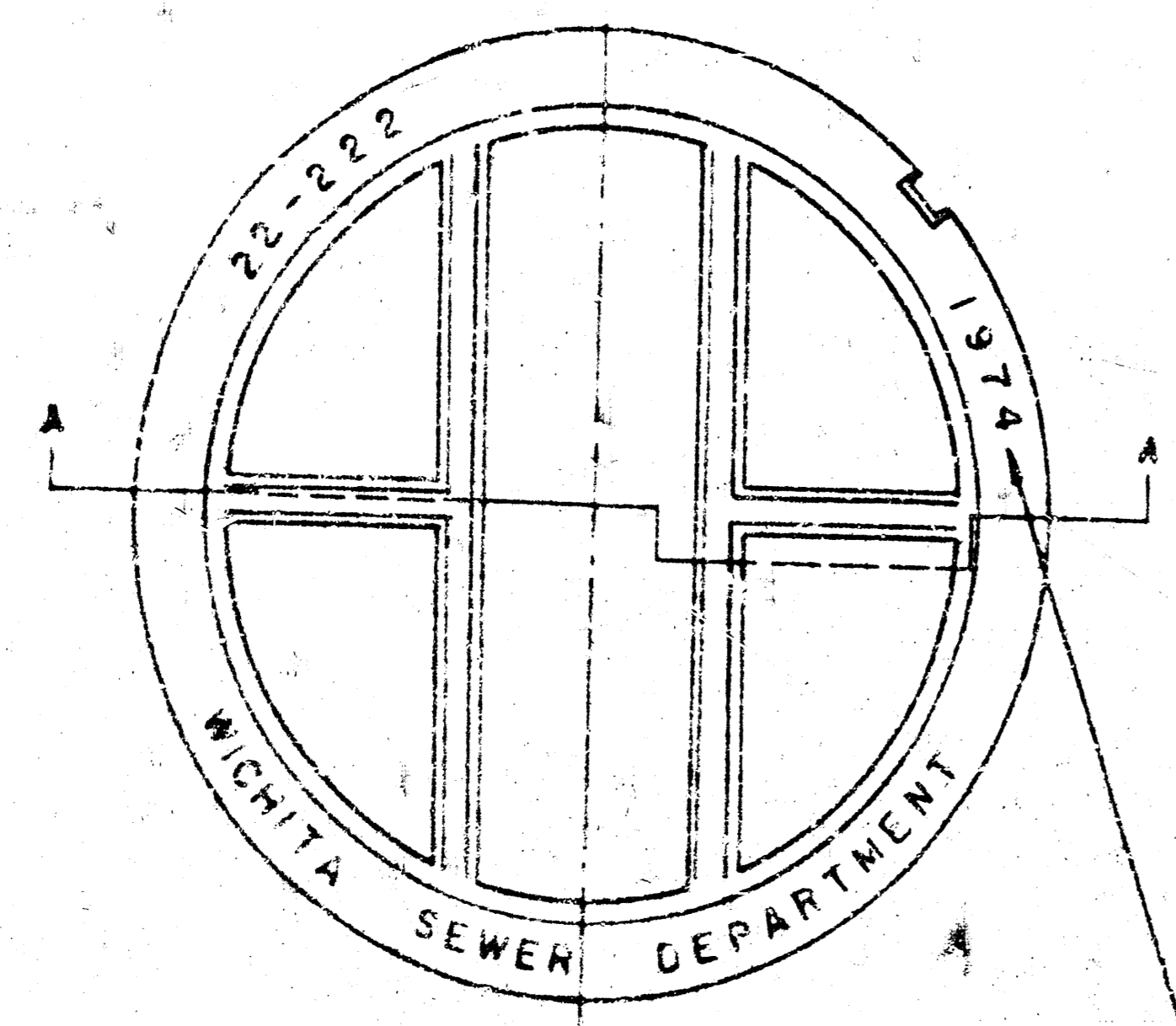
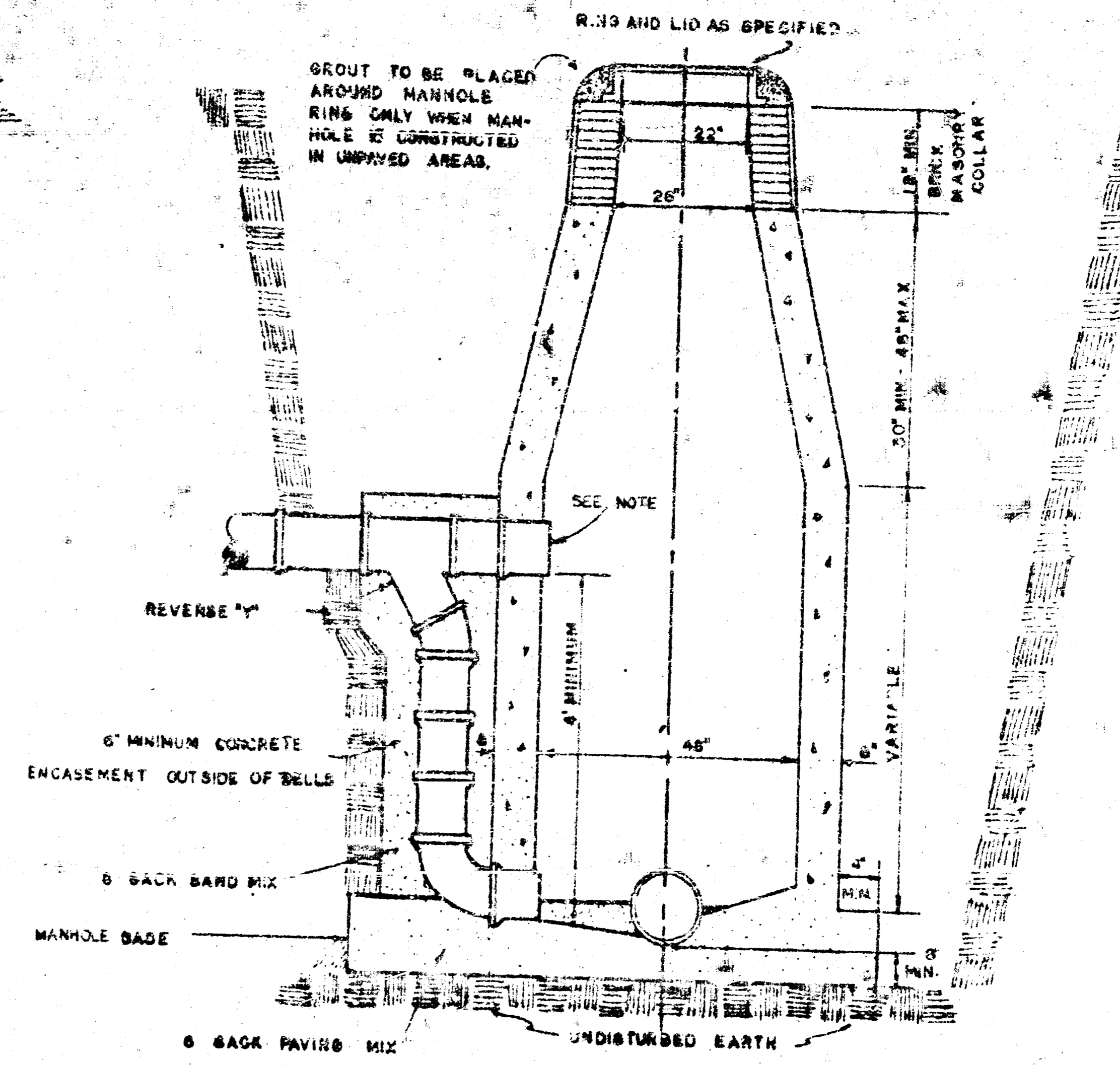
STANDARD MANHOLE, TYPE "C"



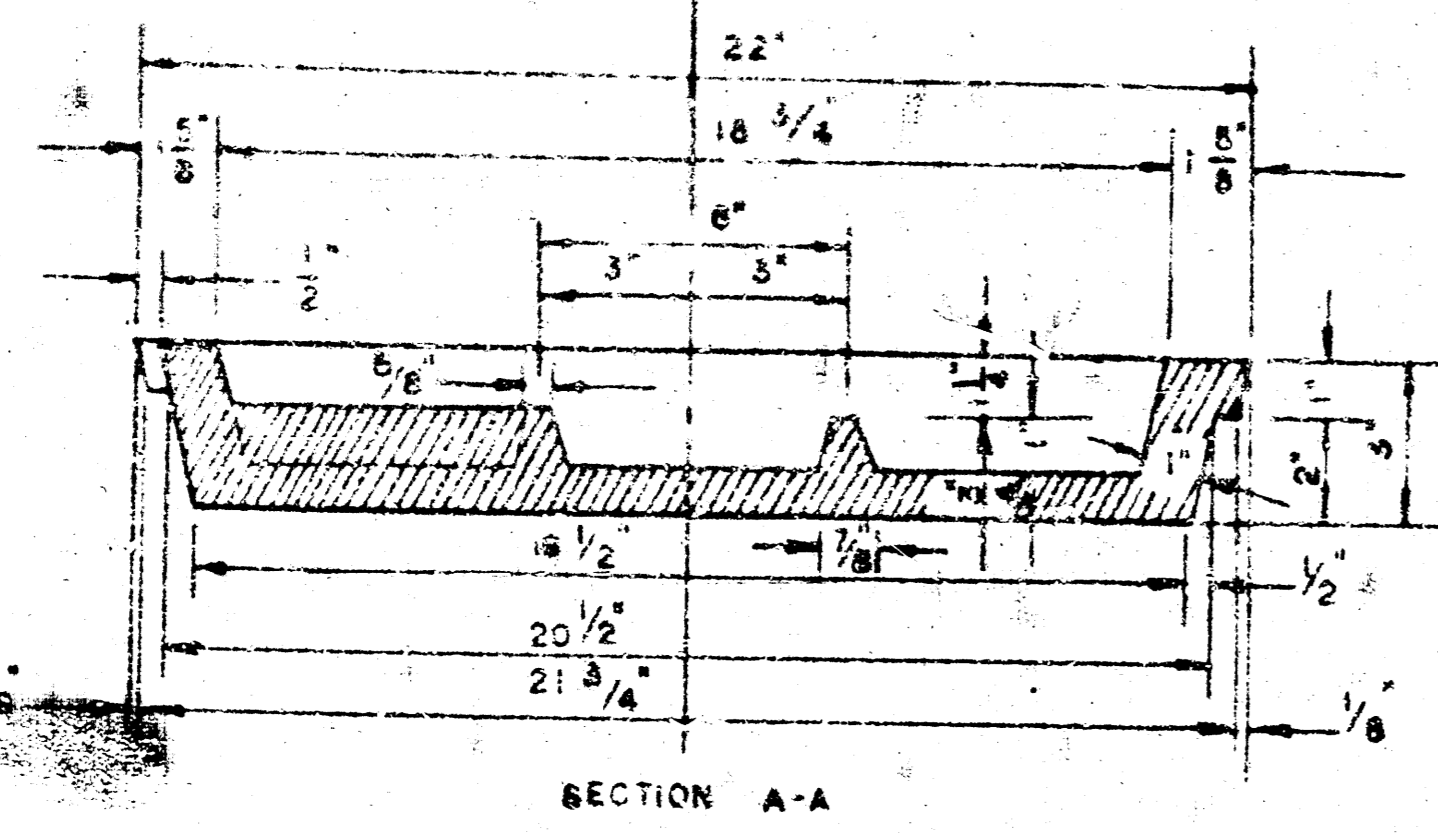
DROP MANHOLE, TYPE "C"



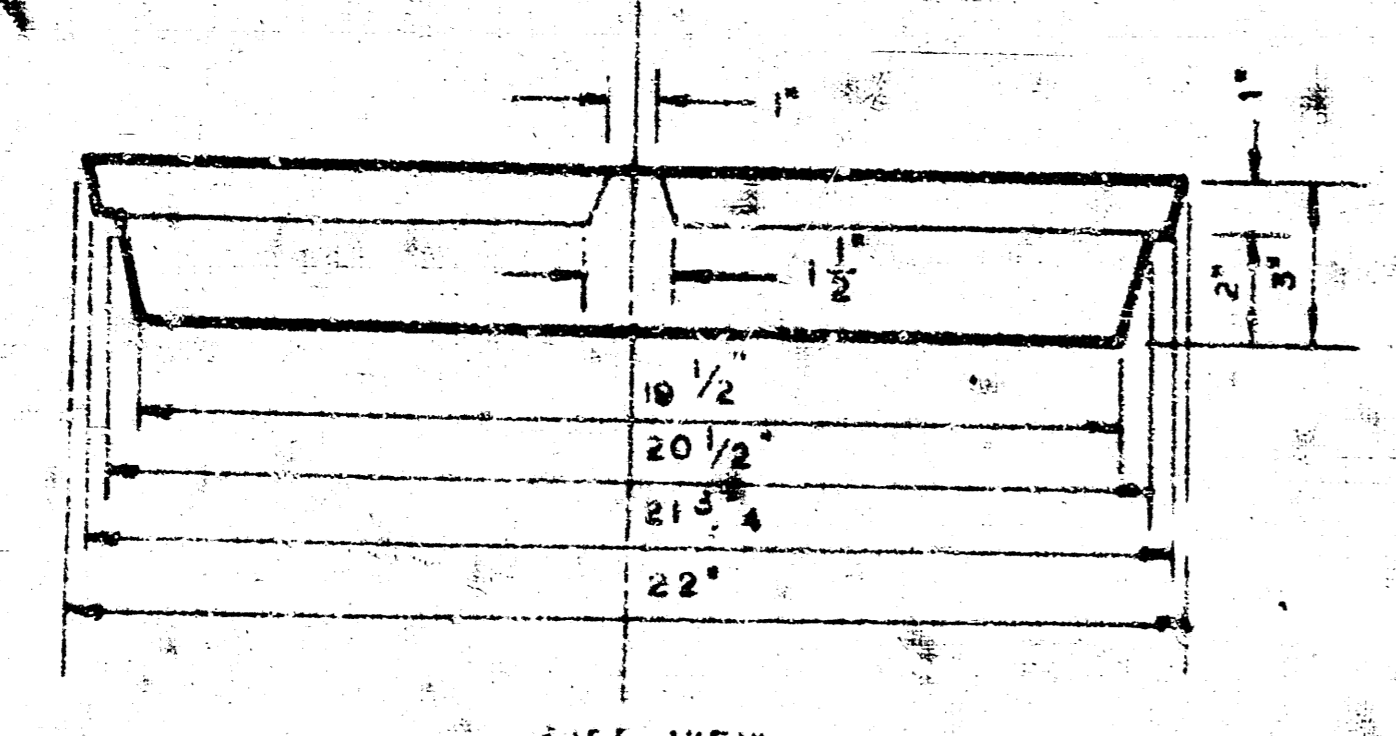
OUTSIDE DROP MANHOLE, TYPE "C"



TOP VIEW
MANHOLE COVER
WEIGHT 110 LBS.



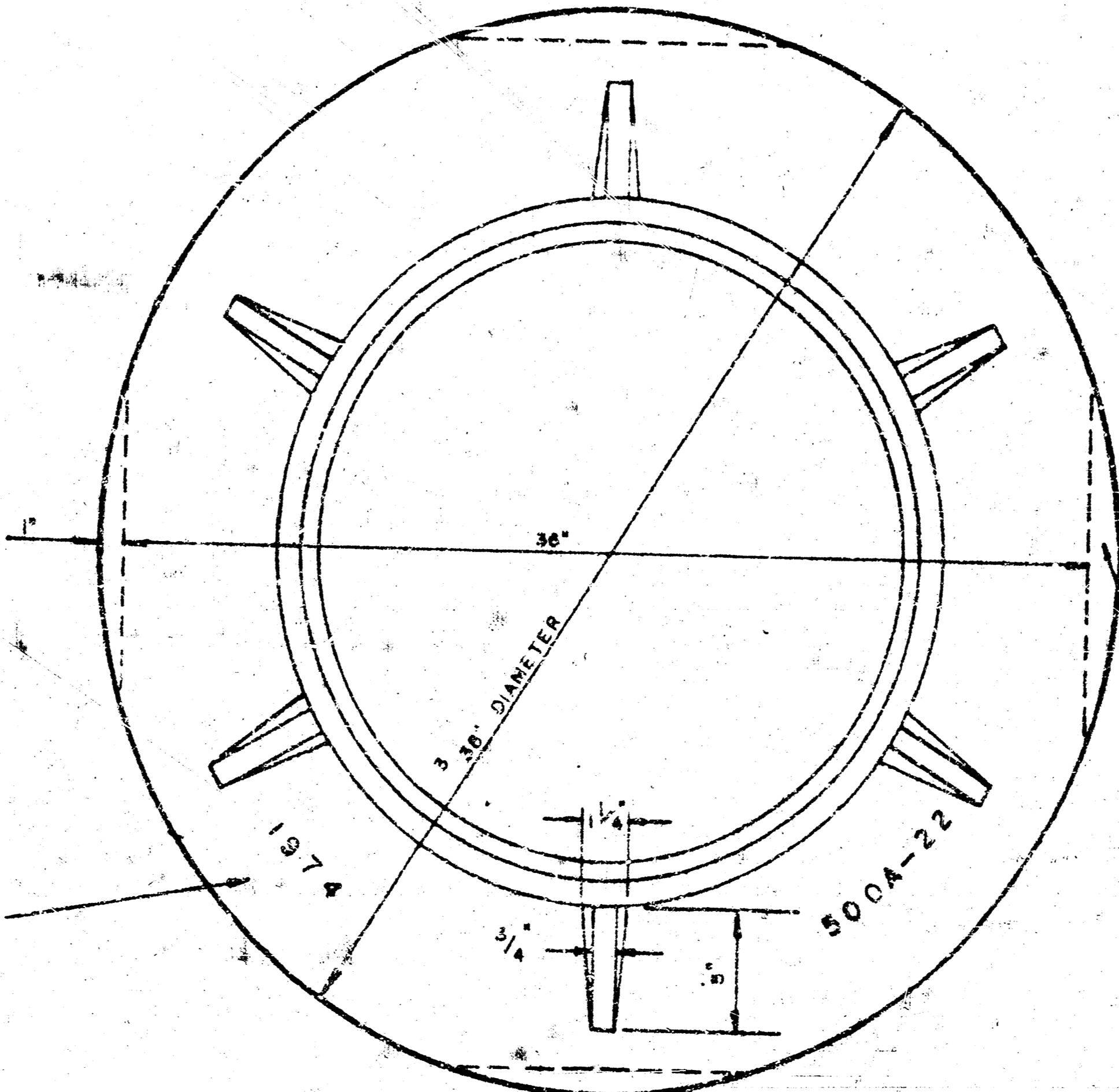
SECTION A-A
MANHOLE COVER



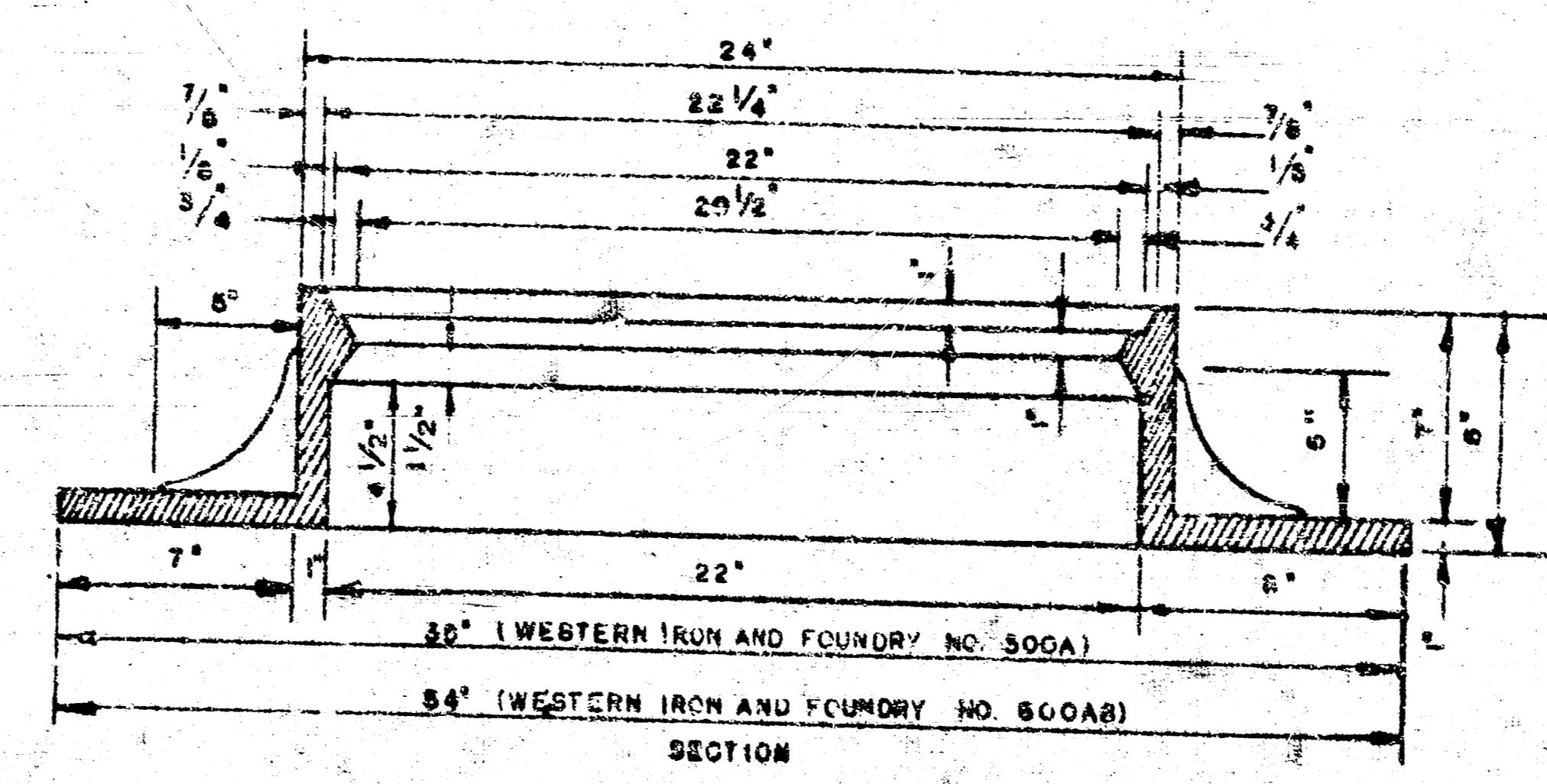
SIDE VIEW
MANHOLE COVER

YEAR CASTING IS MADE

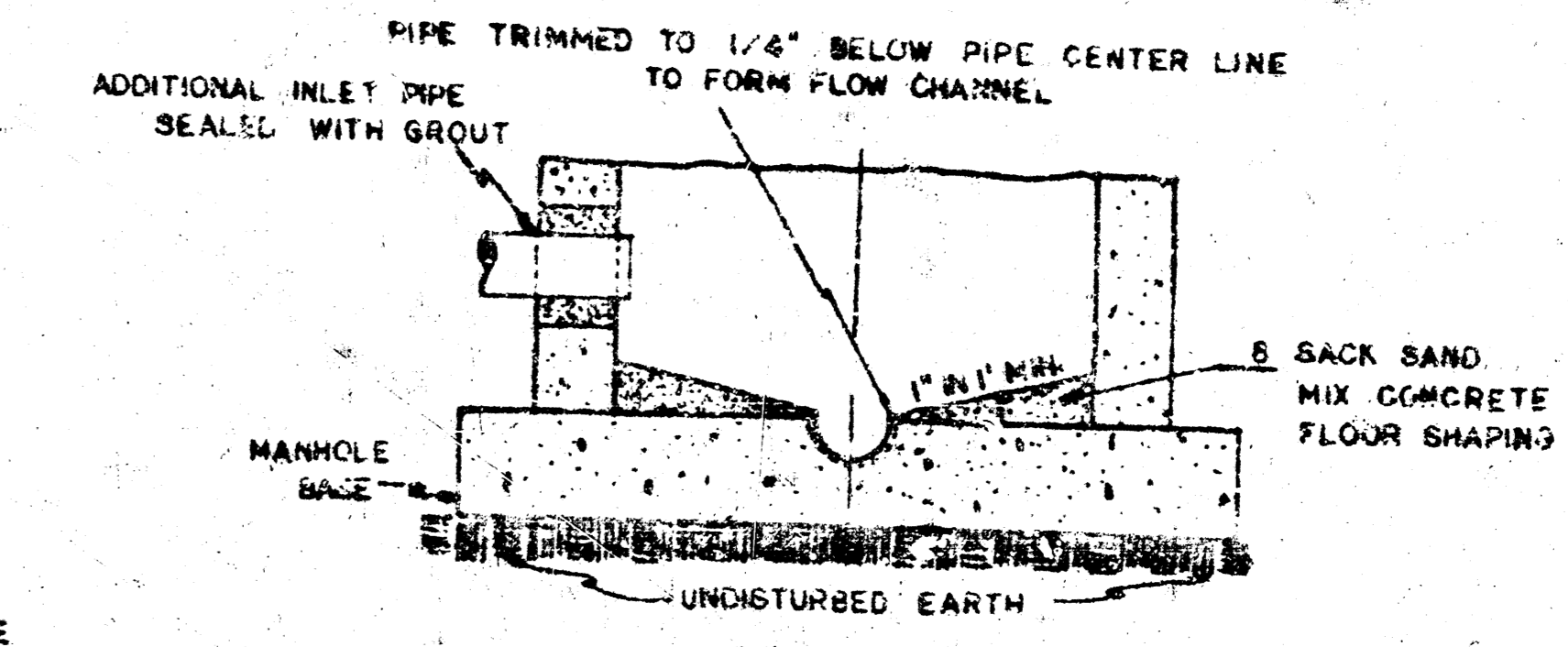
OUTSIDE CIRCUMFERENCE OF COVER AND THE INNER FACE AND SEAT OF RING TO BE MACHINE FIT.



TOP VIEW
MANHOLE RING
WEIGHT 325 LBS. RING NO. 500A
WEIGHT 800 LBS. RING NO. 500AB



SECTION
MANHOLE RING



SECTIONAL ELEVATION-INVERT

NOTE: OPENING FOR INLET PIPE CUT IN MANHOLE WALL AND PIPE GROUTED IN PLACE WITH NON-SHRINKING GROUT. EXTERIOR OF COMPLETED CONNECTION TO BE SEALED WITH APPROVED COATING.

GENERAL NOTES

MORTAR USED IN MASONRY CONSTRUCTION SHALL CONTAIN 8 SACKS OF PER CUBIC YARD.

STANDARD MANHOLES TYPE AND STANDARD DROP MANHOLES "C" SHALL BE BID AS STANDARD HOLES FOR THE TYPE AND DIAMETER INDICATED.

OUTSIDE DROP MANHOLES TYPE SHALL BE BID AS STANDARD OUTSIDE DROP MANHOLES FOR THE TYPE AND DIAMETER INDICATED. ALL MANHOLE DIAMETERS WILL BE 4 FT. UNLESS INDICATED OTHERWISE. MANHOLES WITH PIPE SIZES LARGER THAN 24" SHALL BE 5 FT. DIAMETER.

THE FLOORS OF ALL MANHOLES SHALL BE SHAPED TO INCREASE HYDRAULIC EFFICIENCY USING 8 SACK SAND MIX CONCRETE.

CAST IN PLACE CIRCULAR CONCRETE MANHOLES ARE TO BE CONSTRUCTED ONLY ON SEWERS NOT SUBJECT TO DETERIORATION OF CONCRETE DUE TO FORMATION OF HYDROGEN SULFIDE GAS AND IN LOCATIONS WHERE IT IS OBVIOUS THAT ANY ADJUSTMENT OF THE MANHOLE TOP ELEVATION WHICH MAY BE NECESSARY WILL REQUIRE MODIFICATION OF THE CONCRETE BARREL.

DETAILS OF
SEWER APPURTENANCES
ADOPTED AS STANDARD DESIGN
BY
ENGINEERING DIVISION
CITY OF WICHITA, KANSAS