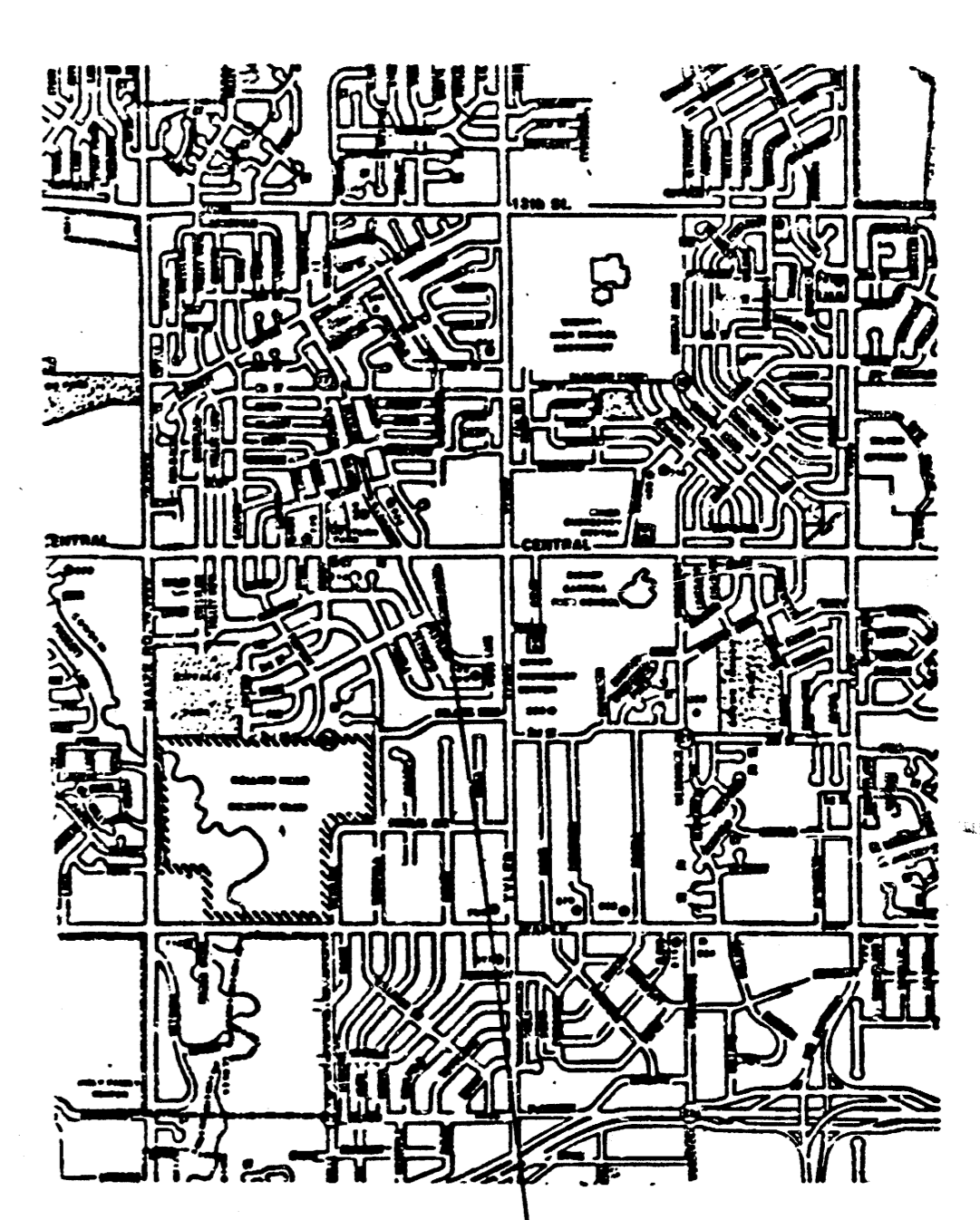
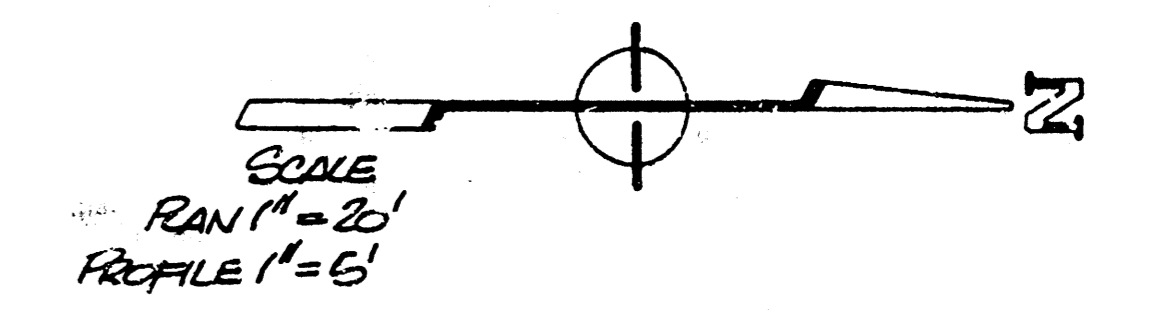
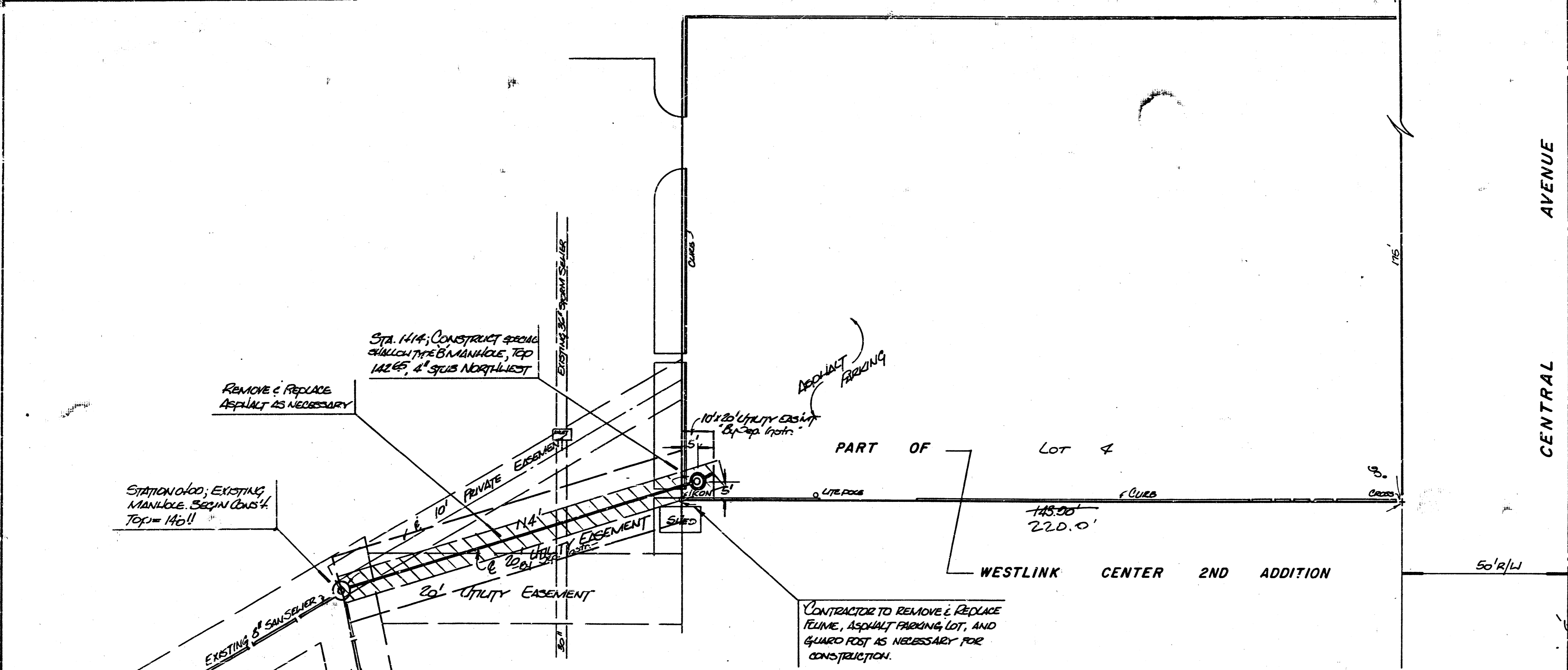


BENCH MARK: CITY STANDARD DOW TEE NORTH
 HORIZONTAL EAST END R.C.B. @ CENTRAL
 AND WESTLINK.
 ELEVATION 147.65 CITY DATUM

Westlink Ave. Drainage City

PLAN	DATE
REVISIONS	
NO. 1	
NO. 2	
NO. 3	
NO. 4	
NO. 5	
NO. 6	
NO. 7	
NO. 8	
NO. 9	
NO. 10	



LOCATION MAP

PROFILE	DATE
REVISIONS	
NO. 1	
NO. 2	
NO. 3	
NO. 4	
NO. 5	
NO. 6	
NO. 7	
NO. 8	
NO. 9	
NO. 10	



APPROVED AS NOTED
 BY CITY ENGINEER OF WICHITA
 Sanitary Sewers *[Signature]*
 Storm Sewers _____
 Driveway Approaches _____
 Water Mains _____
 Power _____

NOTE TO CONTRACTOR
 This project will be constructed under the supervision of the CITY ENGINEER and conforming to the SPECIFICATIONS of the CITY OF WICHITA. THE CONTRACTOR will pay the City of Wichita for all costs of plan review, inspection and booking per contract.



PRIVATE SAN SEWER TO SERVE
 LOT 4 EXCEPT THE S. 156'
 WESTLINK CENTER 2ND ADDITION
 PROJECT NO.
 468-78-245-8000-000-081
 MICHAEL J. BAUGHMAN COMPANY, P.A.
 SURVEYING & ENGINEERING
 1100 W. CENTRAL AVENUE, WICHITA, KANSAS 67202

PLATE 1-SINGLE PLAN AND PROFILE-FULL LINE
 PRINTED IN U.S.A.

10-3-3 1/1

FILMED FROM THE BEST AVAILABLE COPY