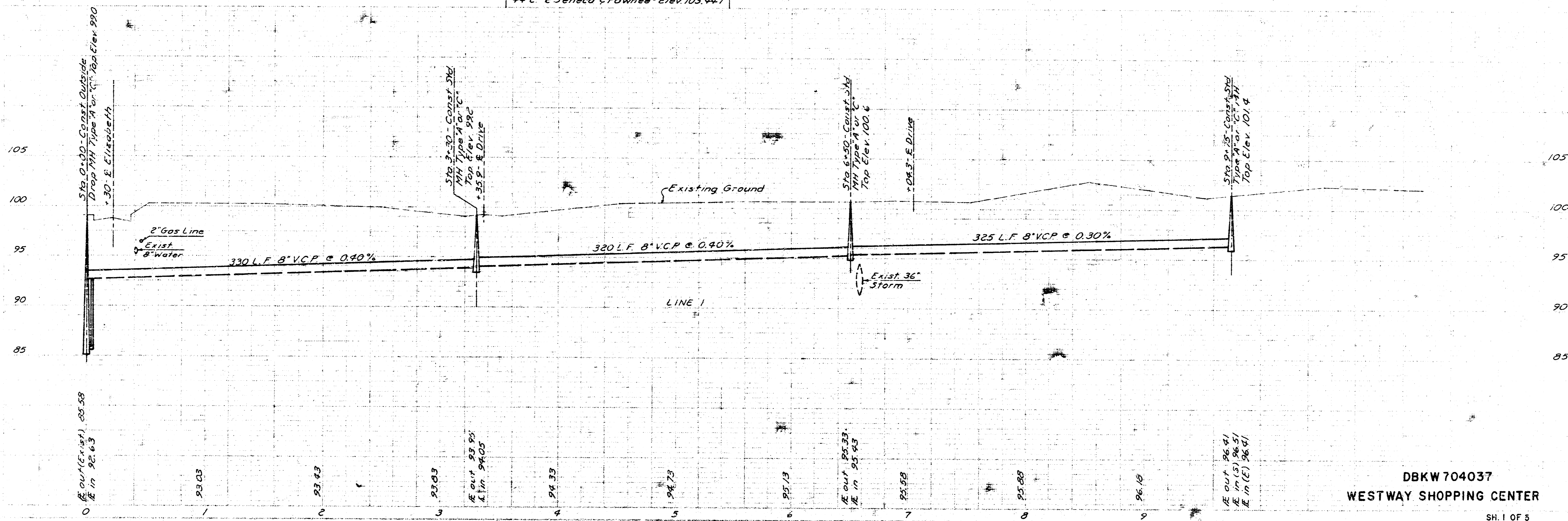
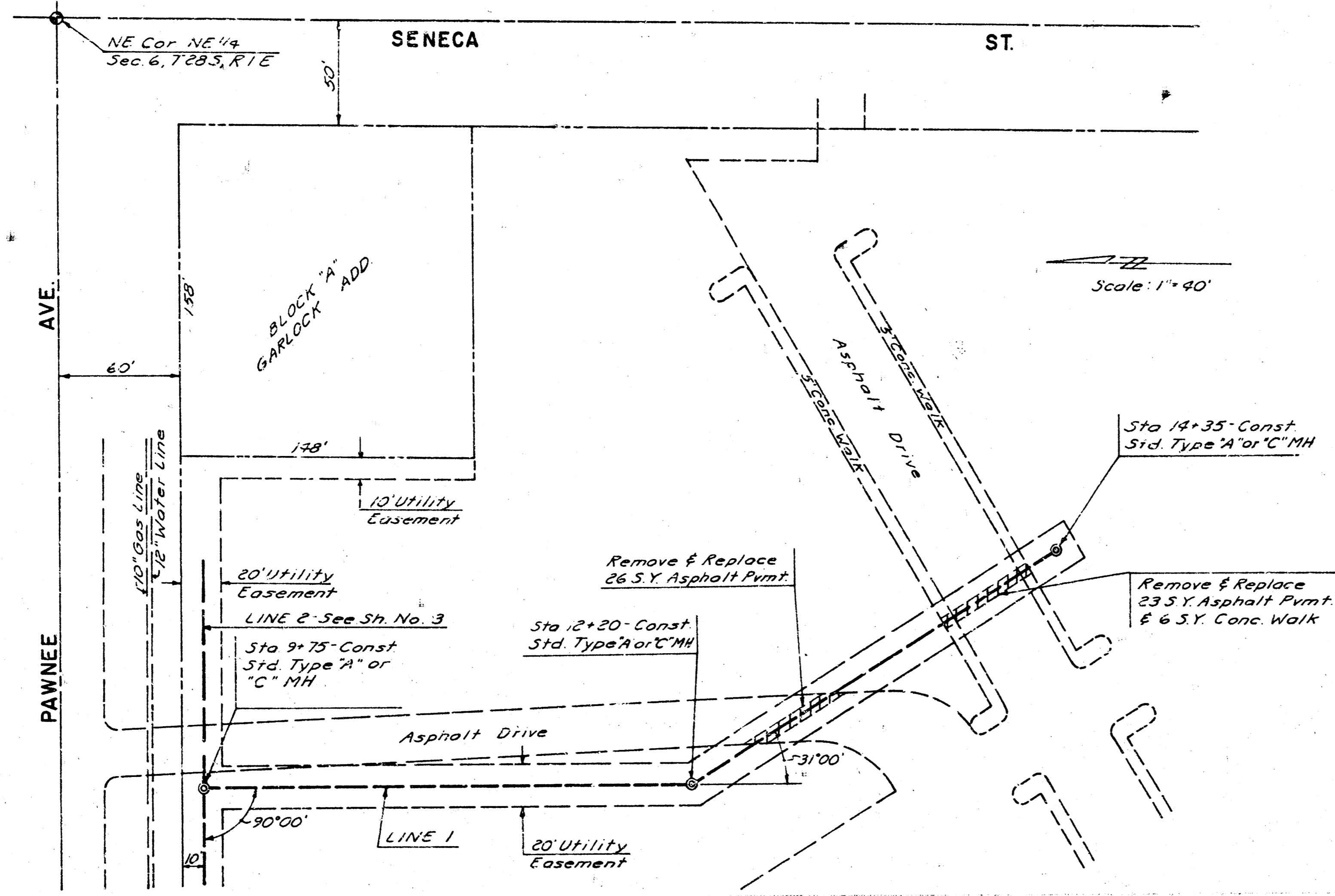


Note: Contractor shall verify locations of underground utilities prior to the trenching operation.

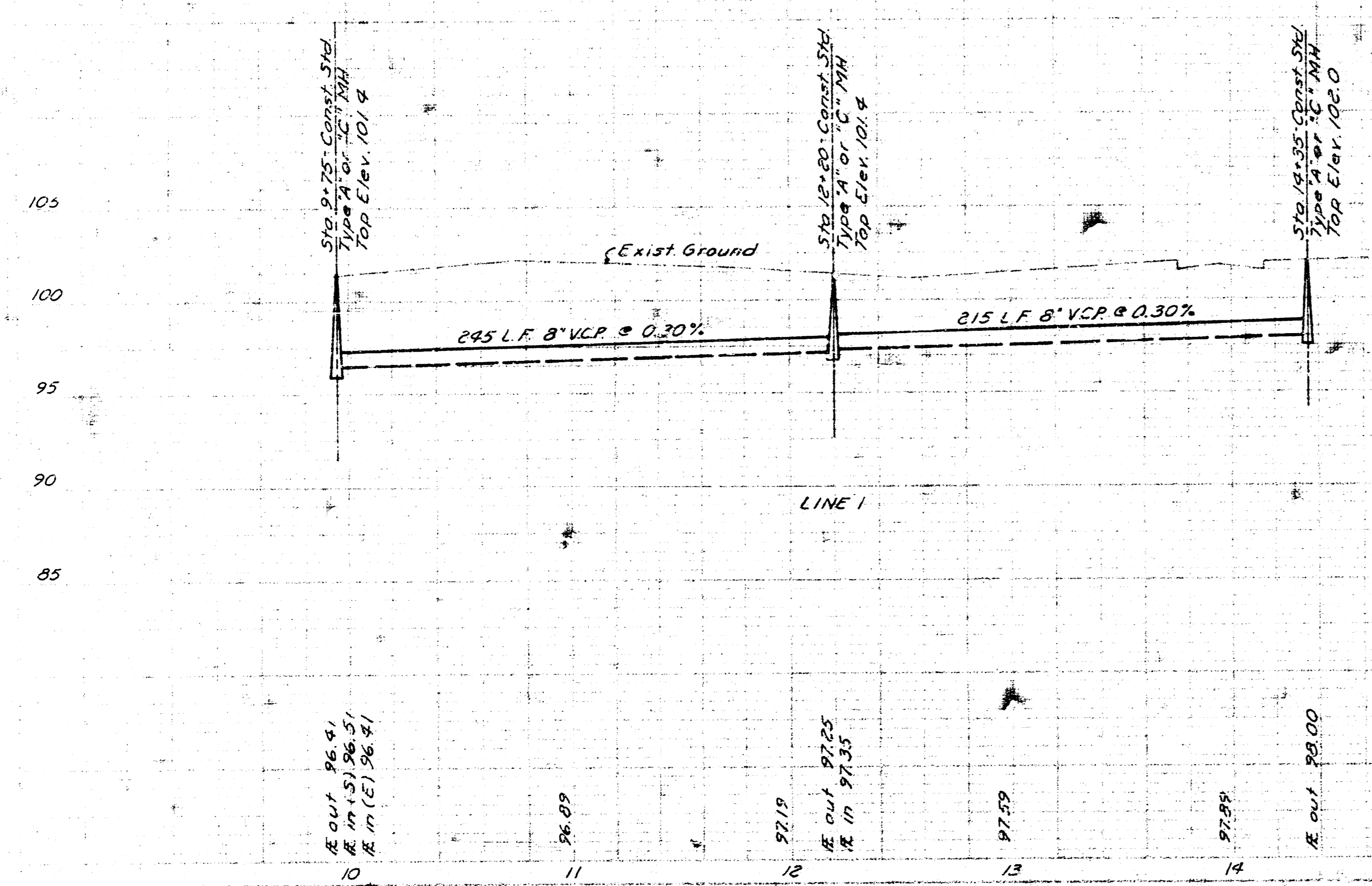
Bench Mark - City Std. Disc 58' N & 44' E & Seneca & Pawnee - Elev. 103.947





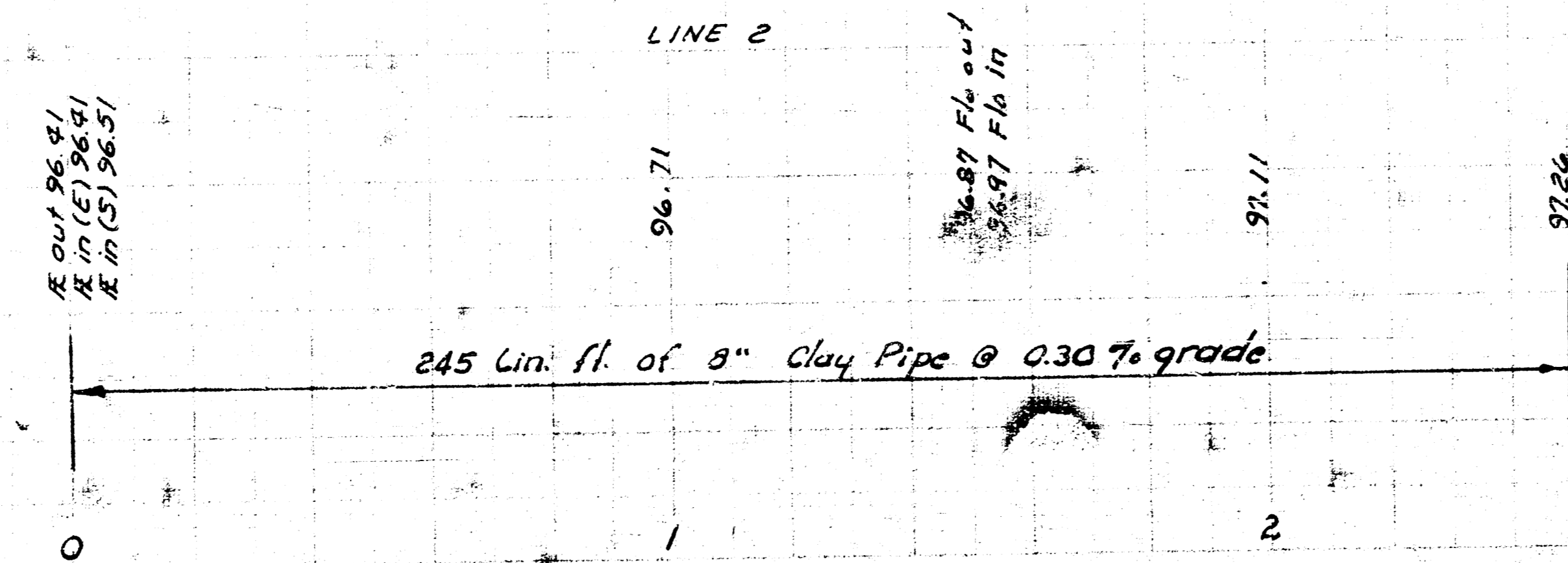
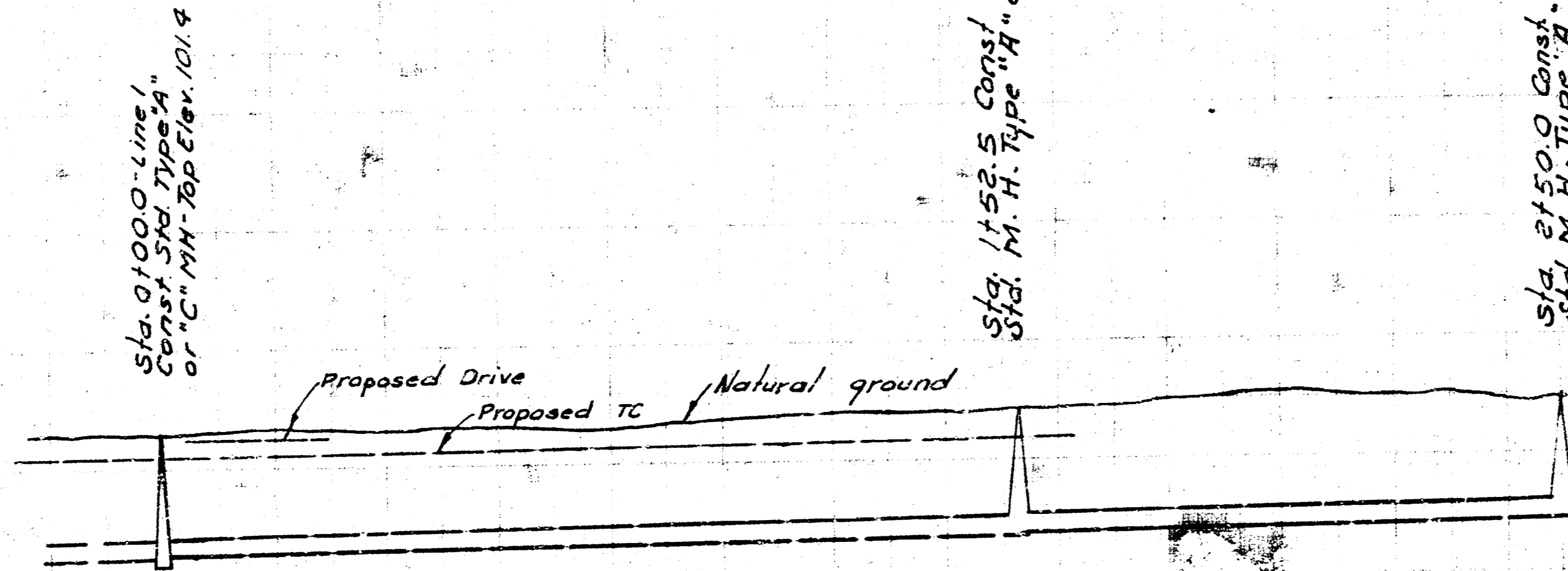
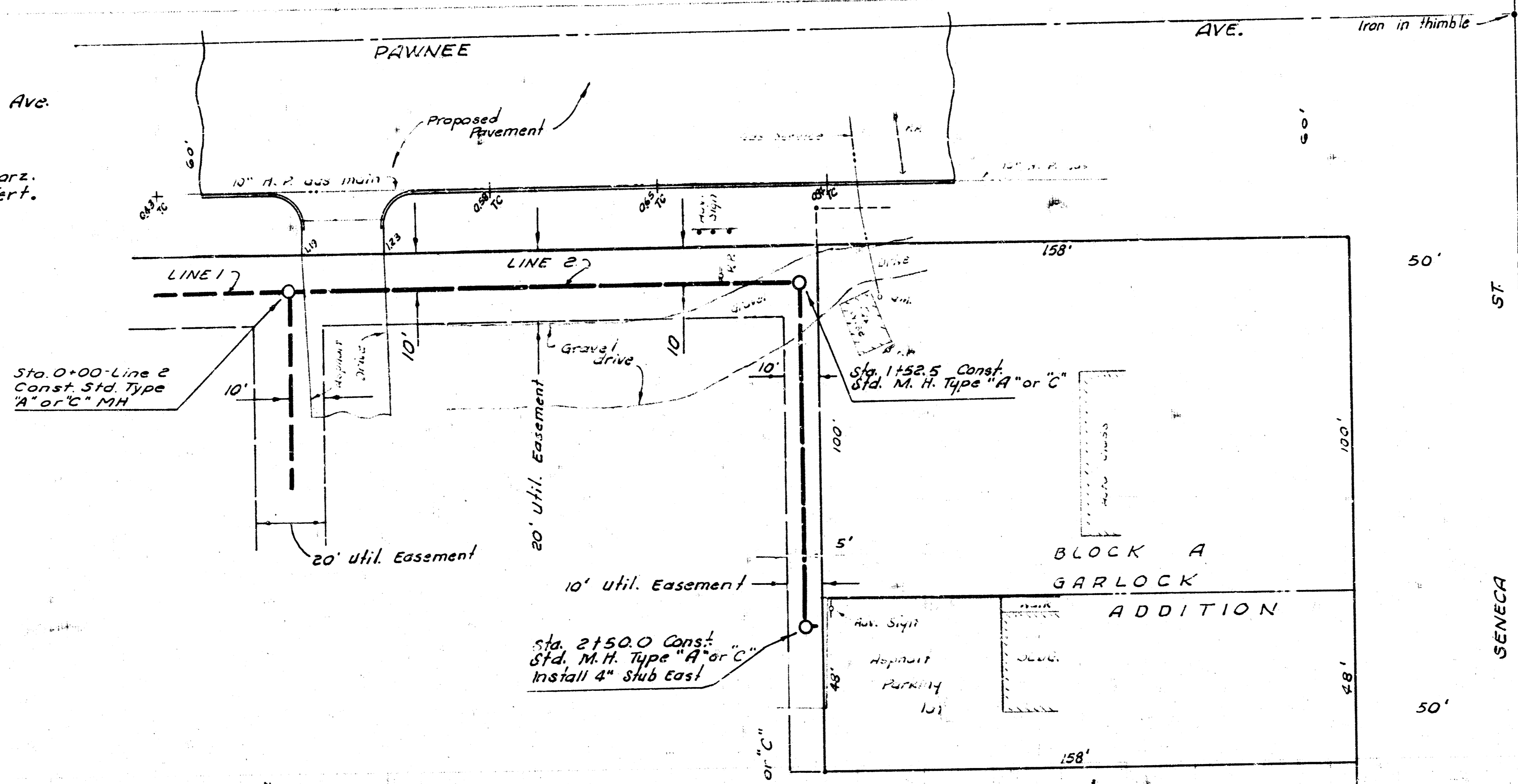
APPROVED AS NOTED
By CITY ENGINEER OF WICHITA
Sanitary Sewers 6-27-14 DBB
Storm Sewers _____
Driveway Approaches _____

NOTE TO CONTRACTOR
This project will be constructed under the supervision of the CITY ENGINEER and conforming to the SPECIFICATIONS of the CITY OF WICHITA. The CONTRACTOR will reimburse the City of Wichita for all cost of Engineering, Plans, and Inspection.

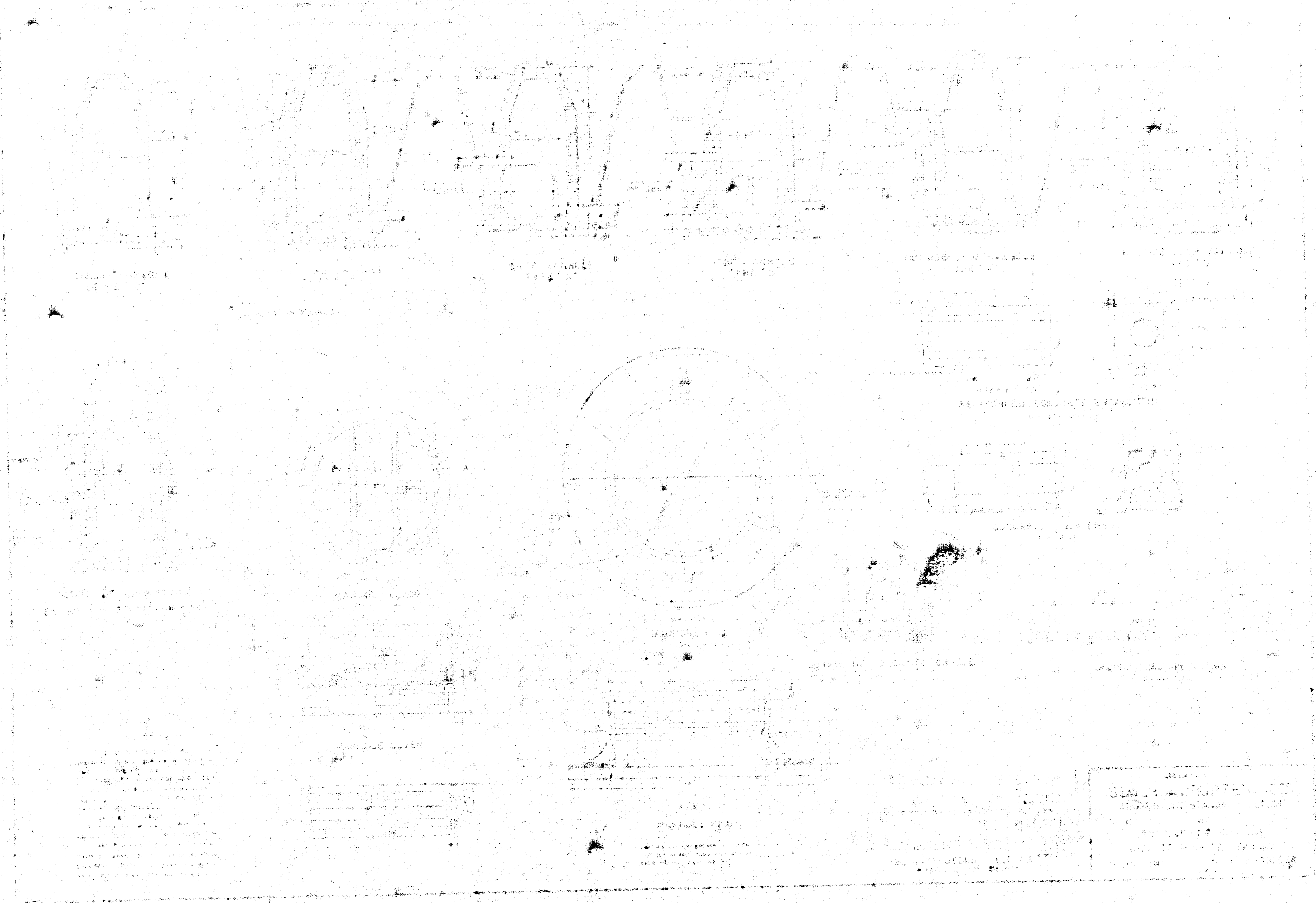


B. M. 103.45 Std. NE Cor.
Seneca St. and Pawnee Ave.

Plan Scale 1" = 20'
Profile Scale 1" = 20' Horiz.
1" = 5' Vert.



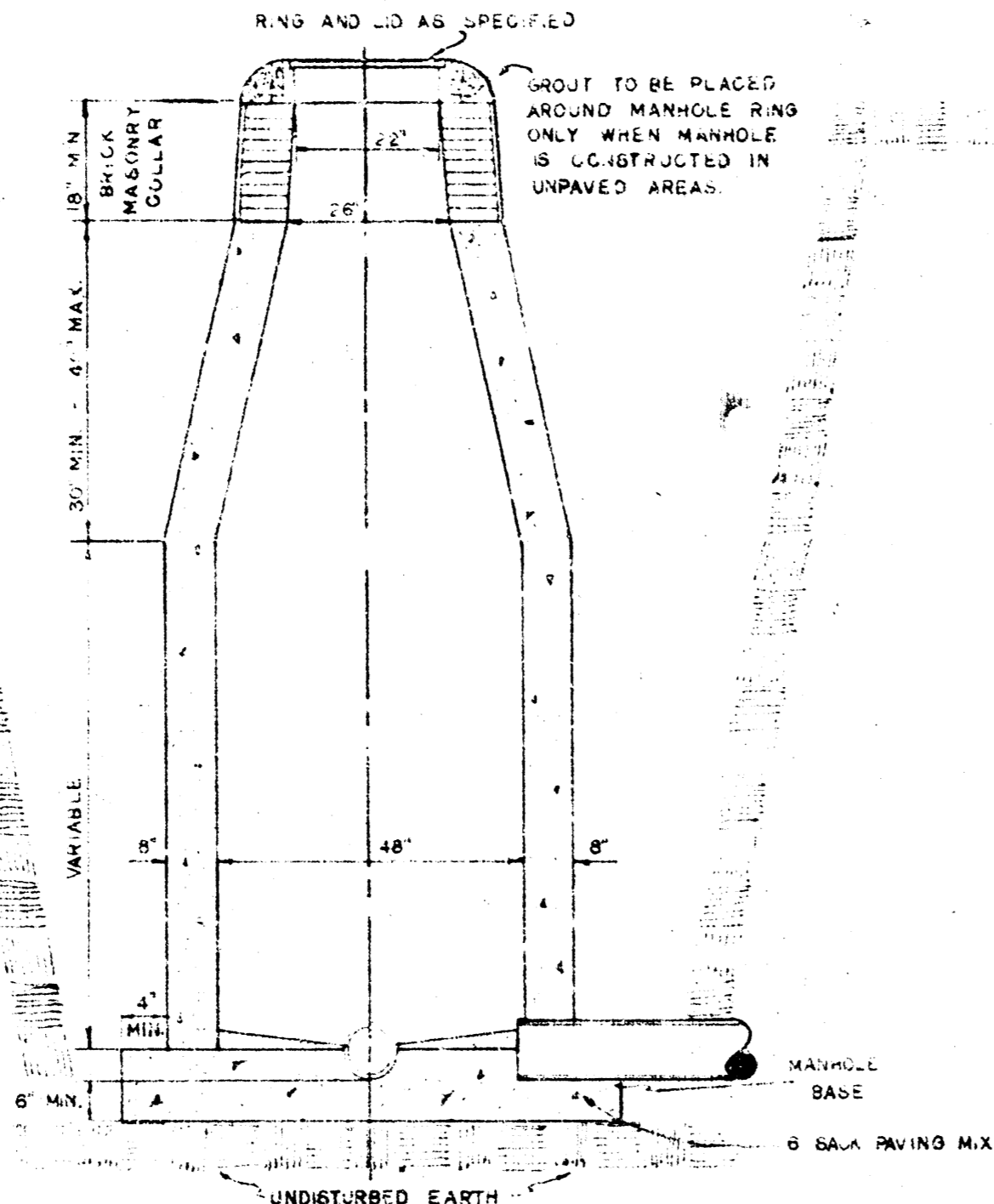
DBKW 704037
WESTWAY SHOPPING CENTER
SH 3 OF 5



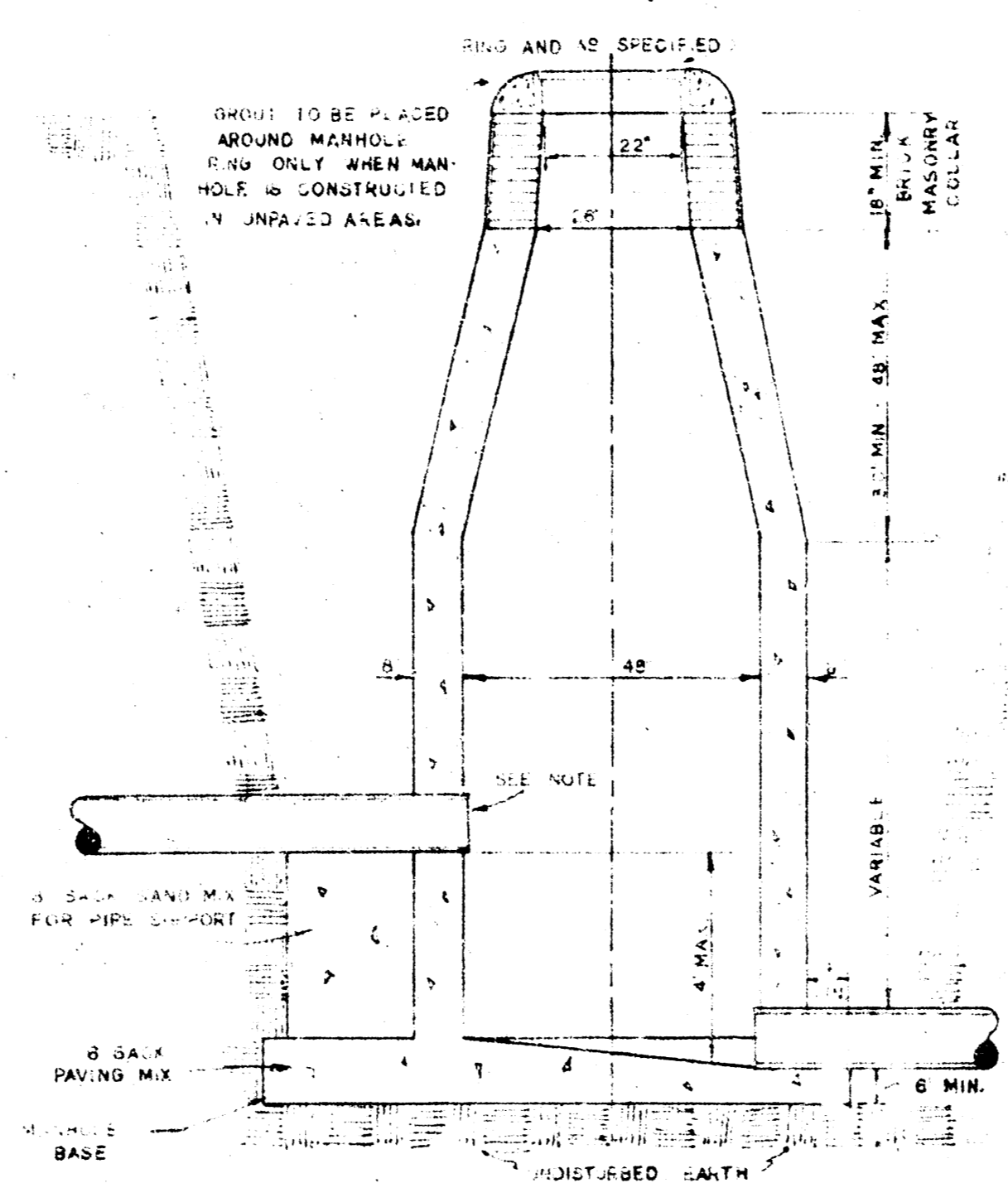
DBK'W 704037
WESTWAY SHOPPING CENTER

SH. 4 OF 5

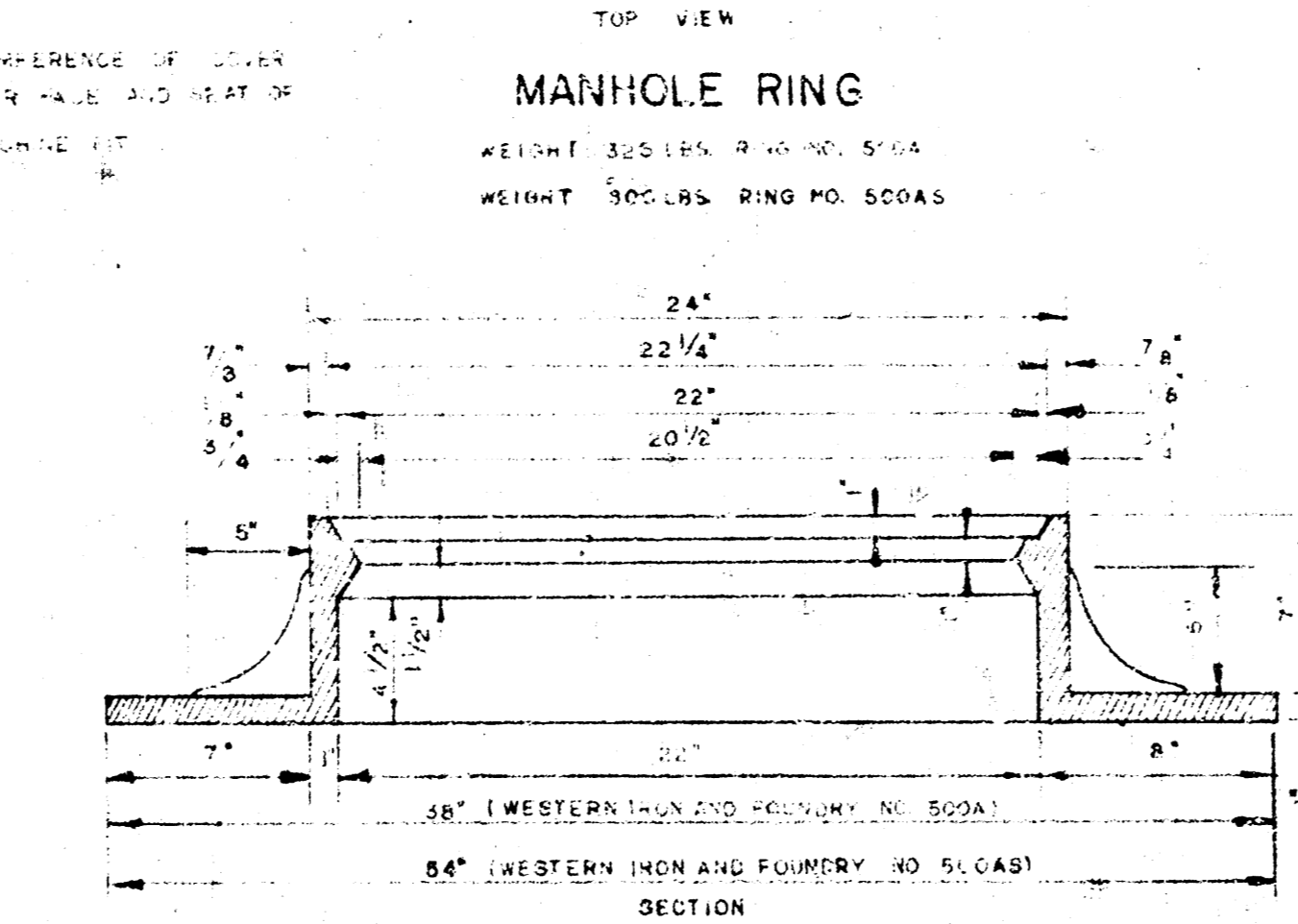
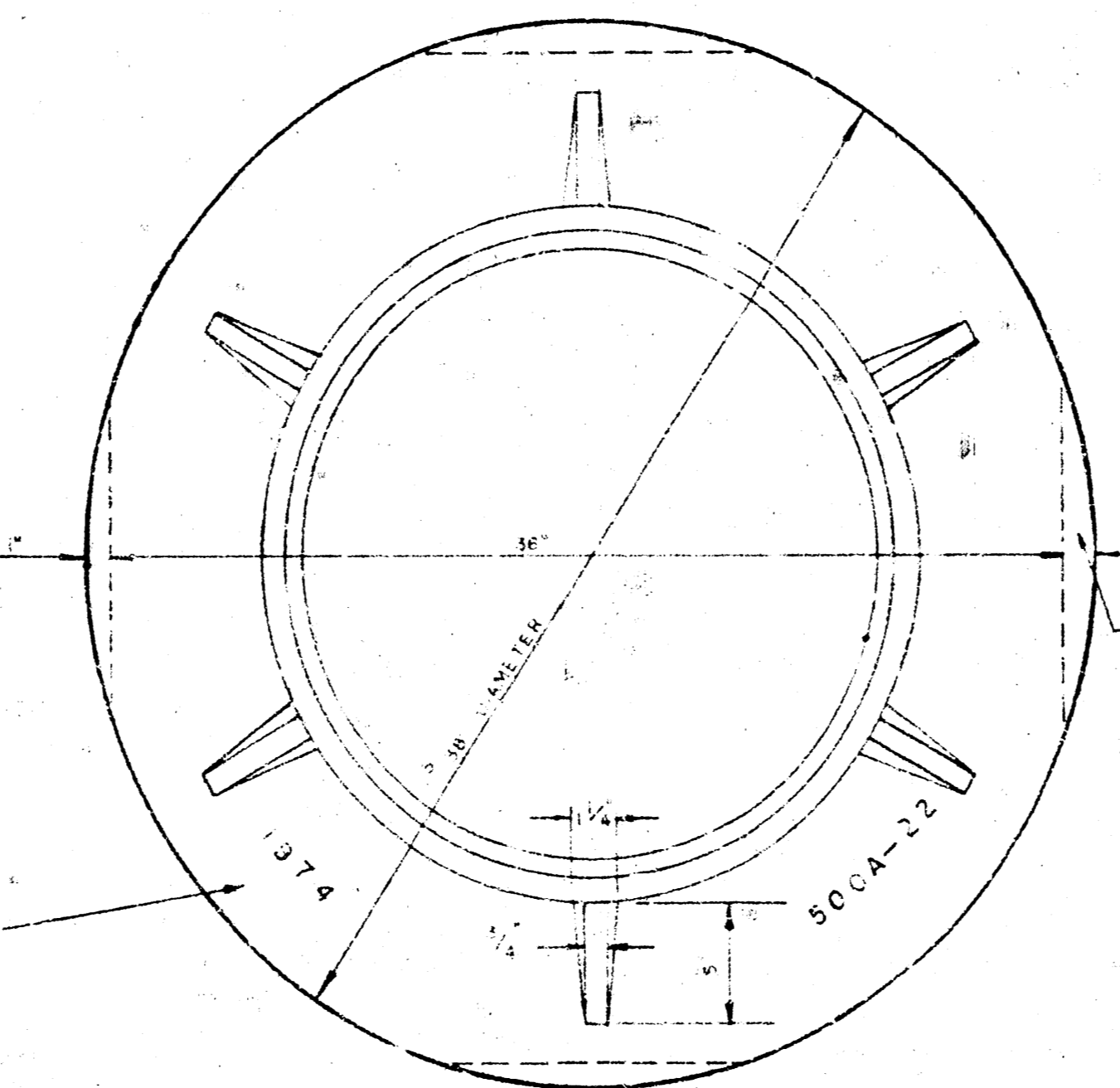
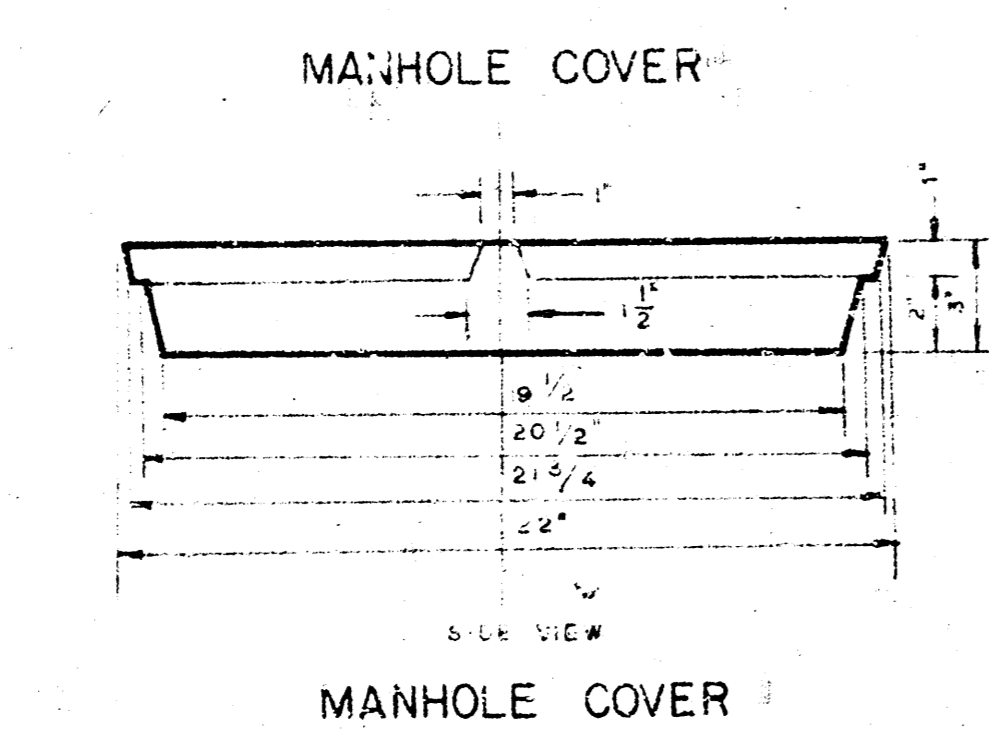
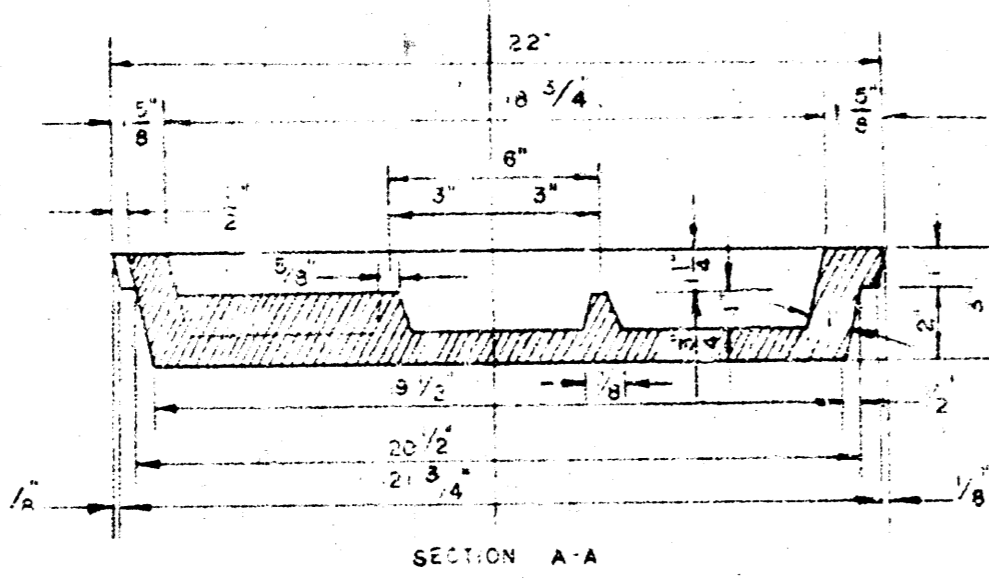
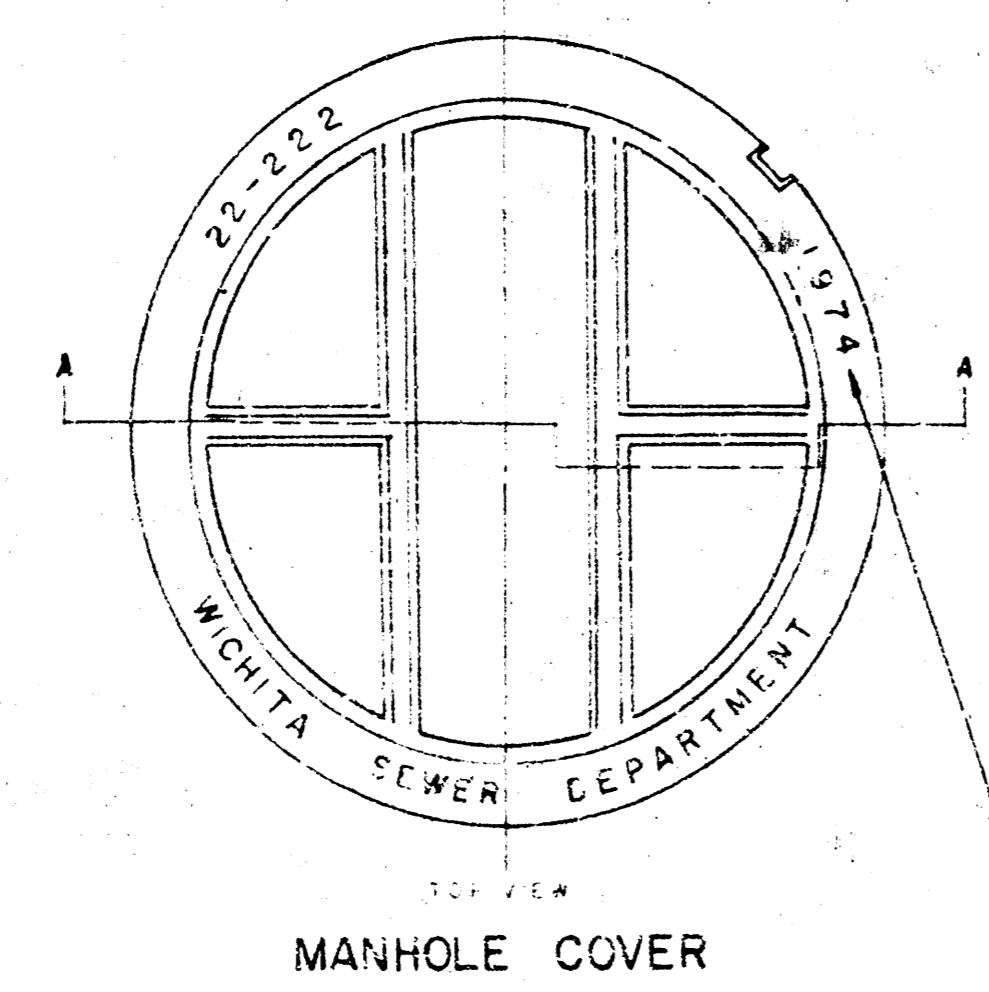
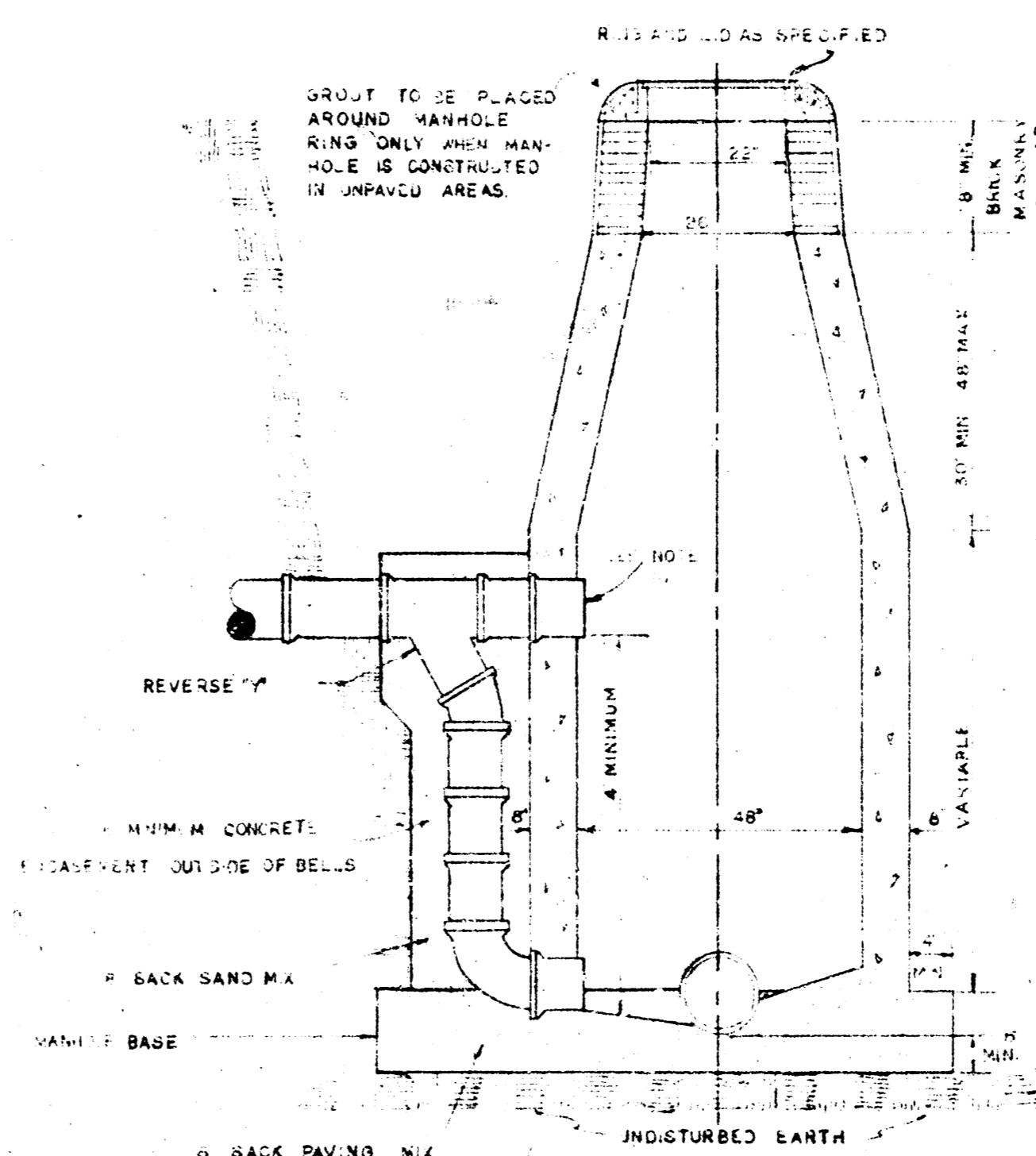
STANDARD MANHOLE, TYPE "C"



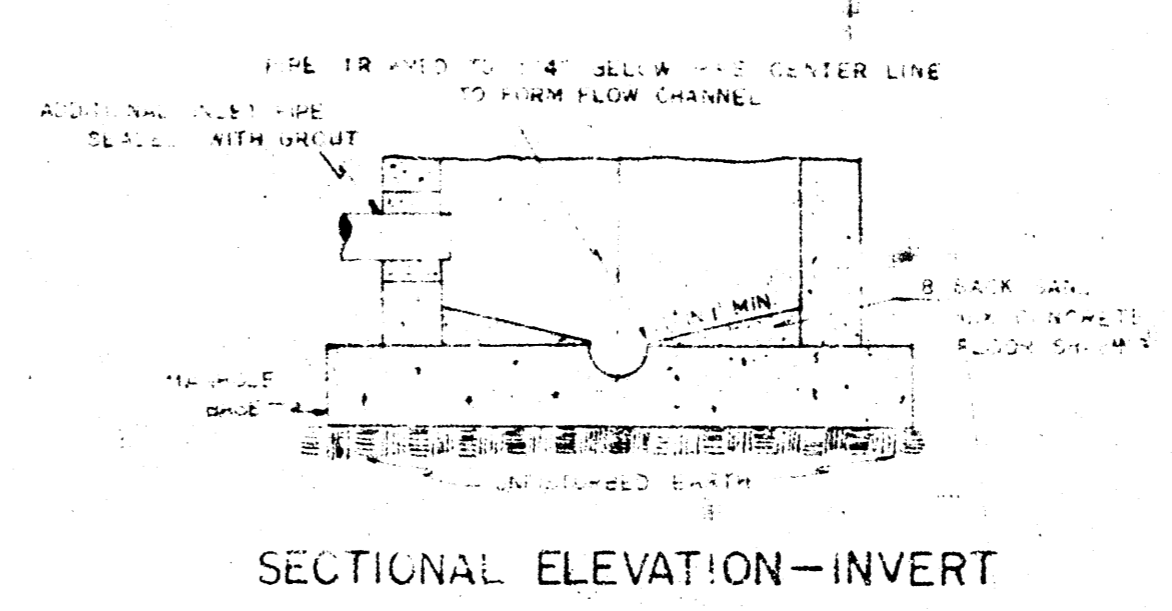
DROP MANHOLE, TYPE "C"



OUTSIDE DROP MANHOLE, TYPE "C"



MANHOLE RING



NOTE: OPENING FOR INLET PIPE CUT IN MANHOLE WALL AND PIPE GROUTED IN PLACE WITH NON-SHRINKING GROUT. EXTERIOR OF COMPLETED CONNECTION TO BE SEALED WITH APPROVED COATING.

GENERAL NOTES
 MORTAR USED IN MASONRY CONSTRUCTION SHALL CONTAIN 8 SACKS OF CEMENT PER CUBIC YARD.
 STANDARD MANHOLES TYPE "C" AND STANDARD DROP MANHOLES TYPE "C" SHALL BE BID AS STANDARD MANHOLES FOR THE TYPE AND DIAMETER INDICATED.
 OUTSIDE DROP MANHOLES TYPE "C" SHALL BE BID AS STANDARD OUTSIDE DROP MANHOLES FOR THE TYPE AND DIAMETER INDICATED. ALL MANHOLE DIAMETERS WILL BE 4 FT UNLESS INDICATED OTHERWISE. MANHOLES WITH PIPE SIZES LARGER THAN 24" SHALL BE 5 FT DIAMETER.
 THE FLOORS OF ALL MANHOLES SHALL BE SHAPED TO INCREASE HYDRAULIC EFFICIENCY USING 8 SACK SAND MIX CONCRETE.
 CAST IN PLACE CIRCULAR CONCRETE MANHOLES ARE TO BE CONSTRUCTED ONLY ON SEWERS NOT SUBJECT TO DETERIORATION OF CONCRETE DUE TO FORMATION OF HYDROGEN SULFIDE GAS AND IN LOCATIONS WHERE IT IS OBVIOUS THAT ANY ADJUSTMENT OF THE MANHOLE TOP ELEVATION WHICH MAY BE NECESSARY WILL NOT REQUIRE MODIFICATION OF THE CONCRETE BARREL.

DBKW 704037
 WESTWAY SHOPPING CENTER
 DETAILS OF
 SEWER APPURTENANCES
 ADOPTED AS STANDARD DESIGN
 BY
 ENGINEERING DIVISION
 CITY OF WICHITA, KANSAS
 R. W. LINN CITY ENGINEER
 1974 SH. 5 OF 5