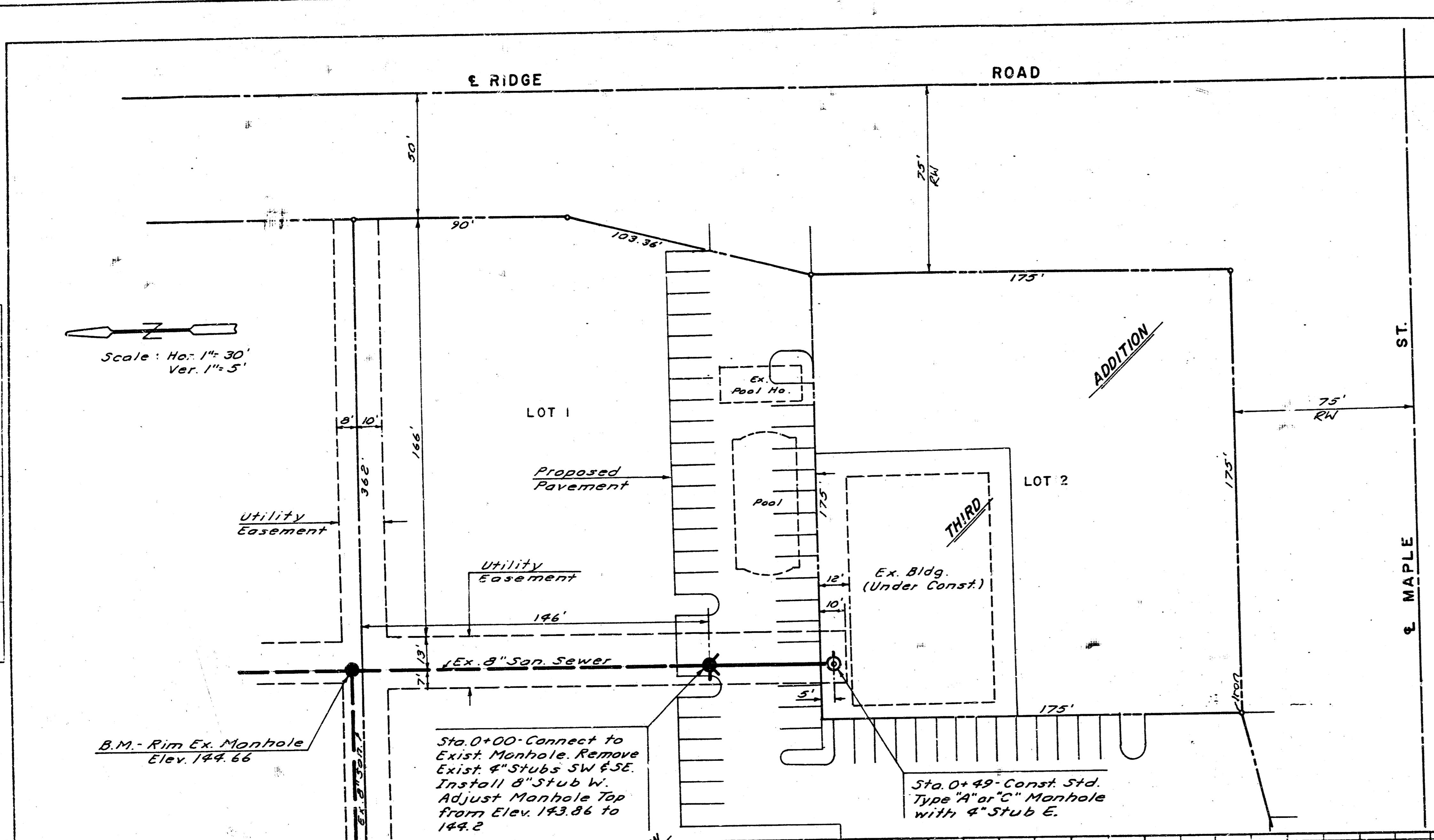


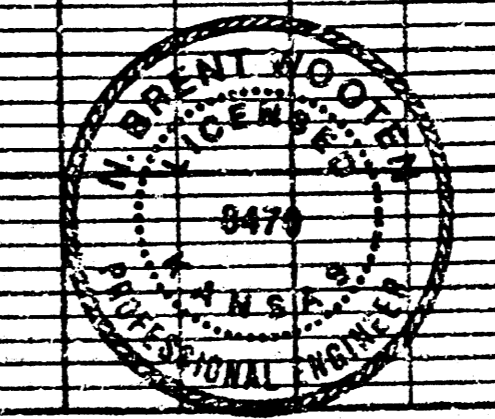
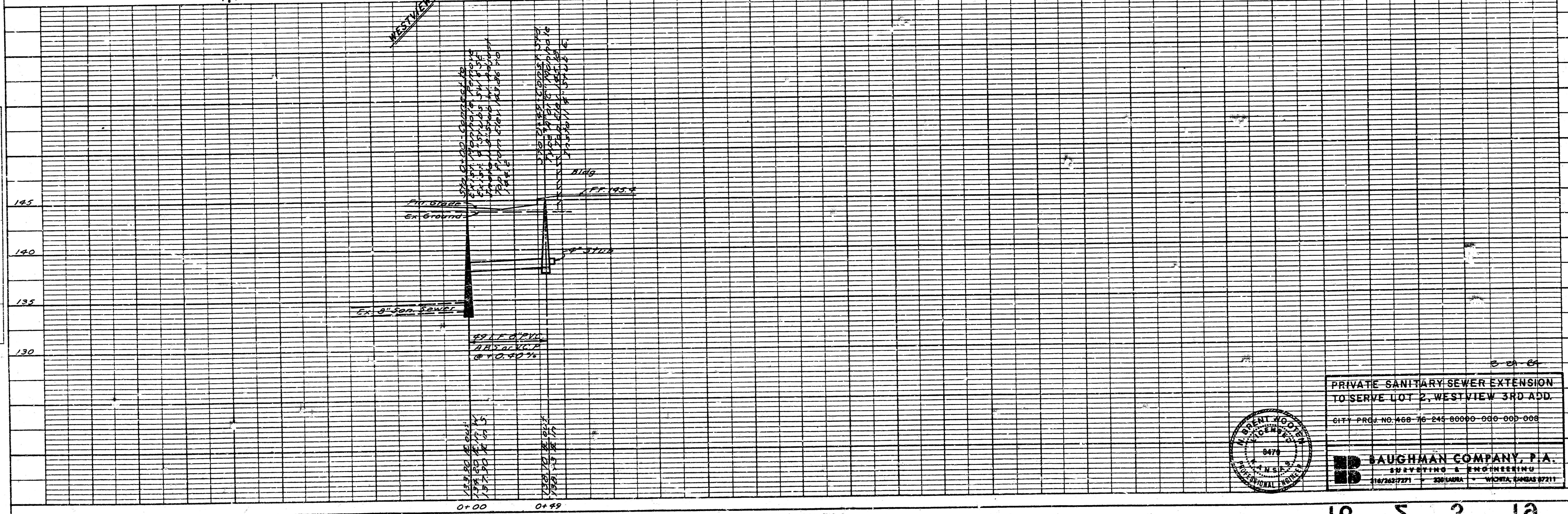
DATE: _____
 BY: _____
 CHECKED: _____
 IN CHARGE: _____
 NO. _____

DATE: _____
 BY: _____
 CHECKED: _____
 IN CHARGE: _____
 NO. _____



NOTE TO CONTRACTOR
 This project will be constructed under the supervision of the City Engineer of Wichita and the City Engineer of the City of Wichita. The City of Wichita will not be responsible for any costs of inspection.

3-29-84
APPROVED AS NOTED
 By CITY ENGINEER OF WICHITA
 Sanitary Sewers *[Signature]*
 Storm Sewers _____
 Driveway Approaches _____



PRIVATE SANITARY SEWER EXTENSION
 TO SERVE LOT 2, WESTVIEW 3RD ADD.
 CITY PROJ. NO. 468-76-245-80000-000-000-008
BAUGHMAN COMPANY, P.A.
 SURVEYING & ENGINEERING
 218/263-7271 220 LARNA WICHITA, KANSAS 67211