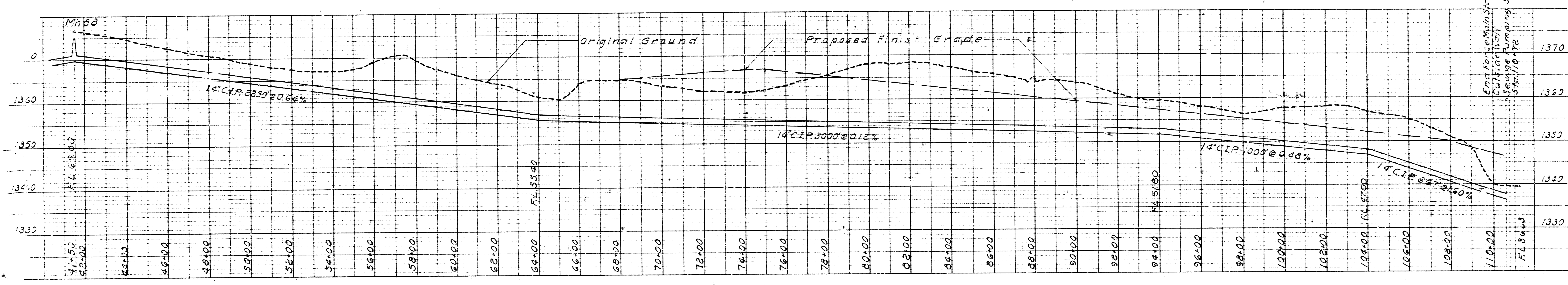
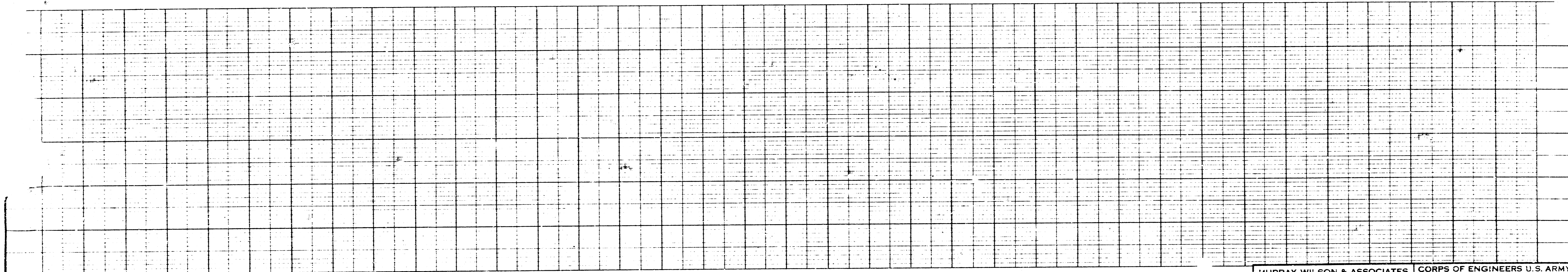


NOTE:
Top of Manholes 7 & 7a 32
is the minimum at 10' and a
max of 2' below finish
ground surface.

GRAVITY OUTFALL LINE

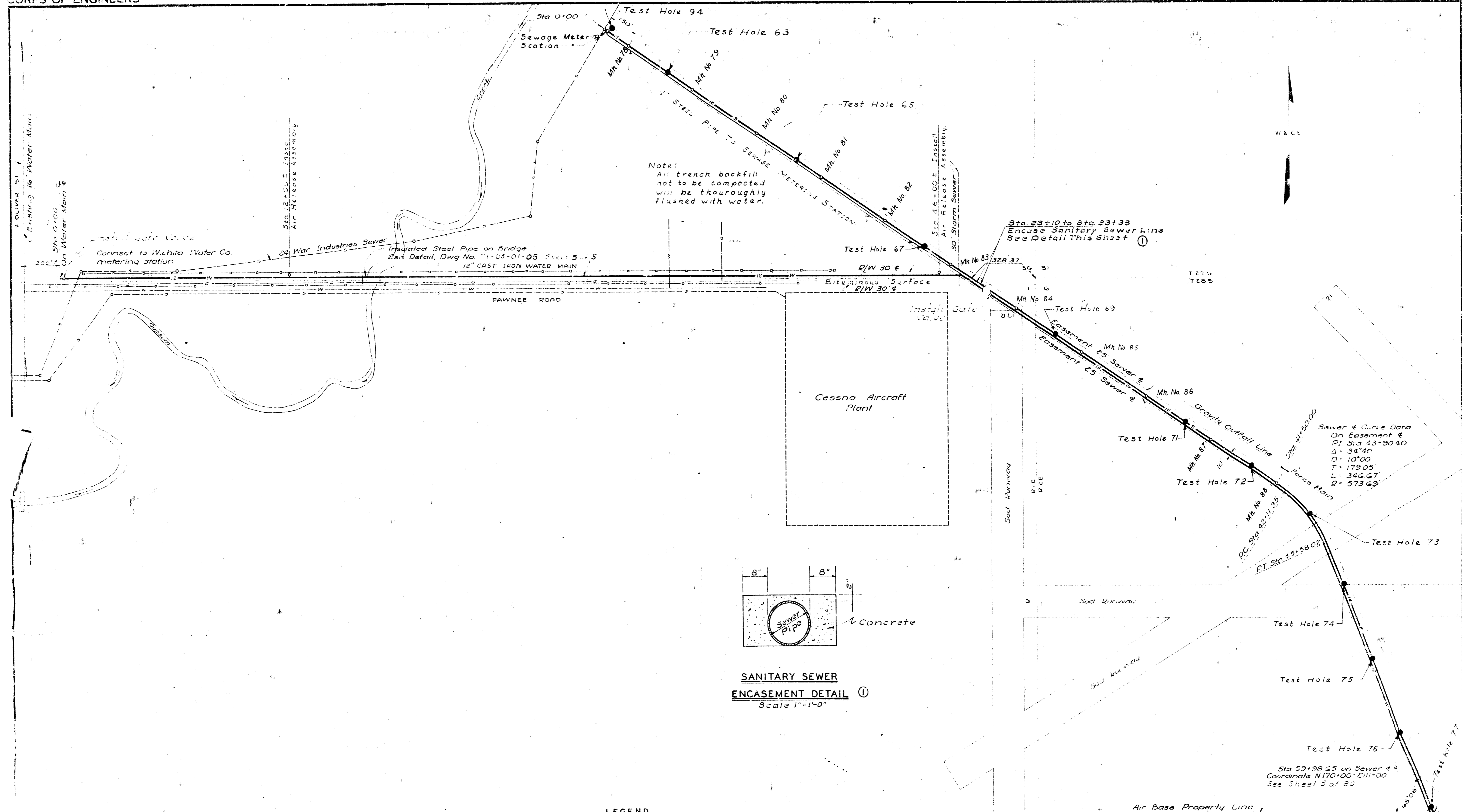


FORCE MAIN

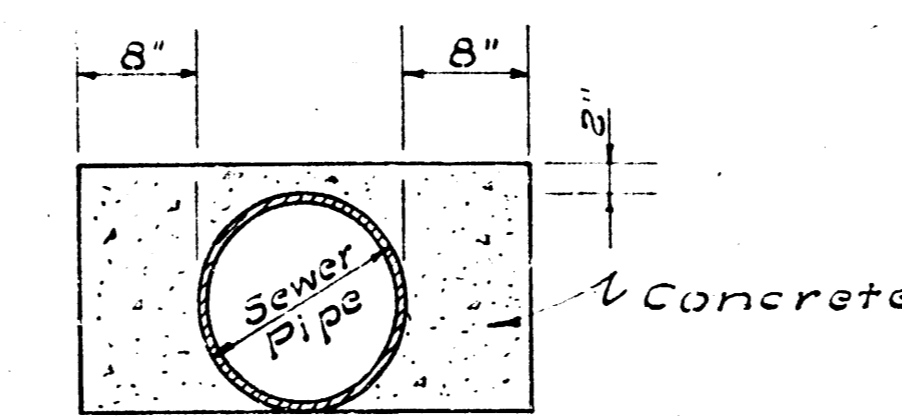


SCALE HORIZ 1 INCH = 200 FEET
VERT 1 INCH = 10 FEET

MURRAY WILSON & ASSOCIATES		CORPS OF ENGINEERS U.S. ARMY													
ARCHITECTS-ENGINEERS WICHITA KAN		OFFICE OF THE DISTRICT ENGINEER													
DRAWN BY: R.E.C.		KANSAS CITY DISTRICT													
TRACED BY: E.P.		KANSAS CITY, MO.													
CHECKED BY: L.T.H.		WICHITA AFB													
SUBMITTED: Murray Wilson		WICHITA KAN													
APPROVED: Murray Wilson		<p>UNDERGROUND UTILITIES SANITARY SEWER SYSTEM FORCE MAIN & OUTFALL PROFILES</p>													
APPROVED: Louis G. Felt		DATE: 2 JULY 1961													
APPROVED: [Signature]		SCALE: 1" = 100'													
APPROVED: [Signature]		DRAWING NUMBER: 71-07-01-01													
<table border="1"> <thead> <tr> <th>SYMBOL</th> <th>DESCRIPTION</th> <th>DATE</th> <th>APPROVAL</th> </tr> </thead> <tbody> <tr> <td> </td> <td> </td> <td> </td> <td> </td> </tr> <tr> <td> </td> <td> </td> <td> </td> <td> </td> </tr> </tbody> </table>		SYMBOL	DESCRIPTION	DATE	APPROVAL									SHEET 1 OF 1	
SYMBOL	DESCRIPTION	DATE	APPROVAL												



Note:
All trench backfill
not to be compacted
will be thoroughly
flushed with water.

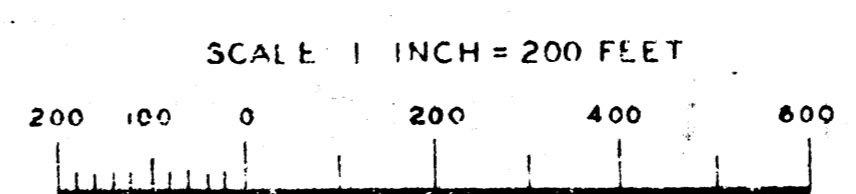


**SANITARY SEWER
ENCASEMENT DETAIL (1)**
Scale 1"=1'-0"

- LEGEND**
- EXISTING WATER LINE
 - WATER LINE TO BE CONSTRUCTED UNDER THIS CONTRACT
 - EXISTING SANITARY SEWER
 - SANITARY SEWER OUTFALL LINE TO BE CONSTRUCTED UNDER THIS CONTRACT
 - SANITARY SEWER FORCE MAIN TO BE CONSTRUCTED UNDER THIS CONTRACT
 - EXISTING GAS LINE
 - EXISTING TELEPHONE LINE
 - EXISTING POWER LINE

Bench Mark
Iron Pin at N 170+00
E 110+00. Elevation 1367.77

Bench Mark
Center Manhole Station 0+00
Elevation 1311.03



(1) SANITARY SEWER ENCASEMENT ADDED C.O. #1 9-1-51 M.A.W.

MURRAY WILSON & ASSOCIATES		CORPS OF ENGINEERS U.S. ARMY	
ARCHITECTS-ENGINEERS		OFFICE OF THE DISTRICT ENGINEER	
WICHITA, KAN.		KANSAS CITY DISTRICT	
WICHITA, KAN.		KANSAS CITY, MO.	
UNDERGROUND UTILITIES WATER SUPPLY LINE & SANITARY SEWER OUTFALL			
LAYOUT PLAN			
APPROVED: <i>Lawrence C. Bell</i>		DATE: 2 JULY 1951	
DRAWN: <i>L.J. Lincoln</i>		SCALE: AS SHOWN	
		71-08-01-04	