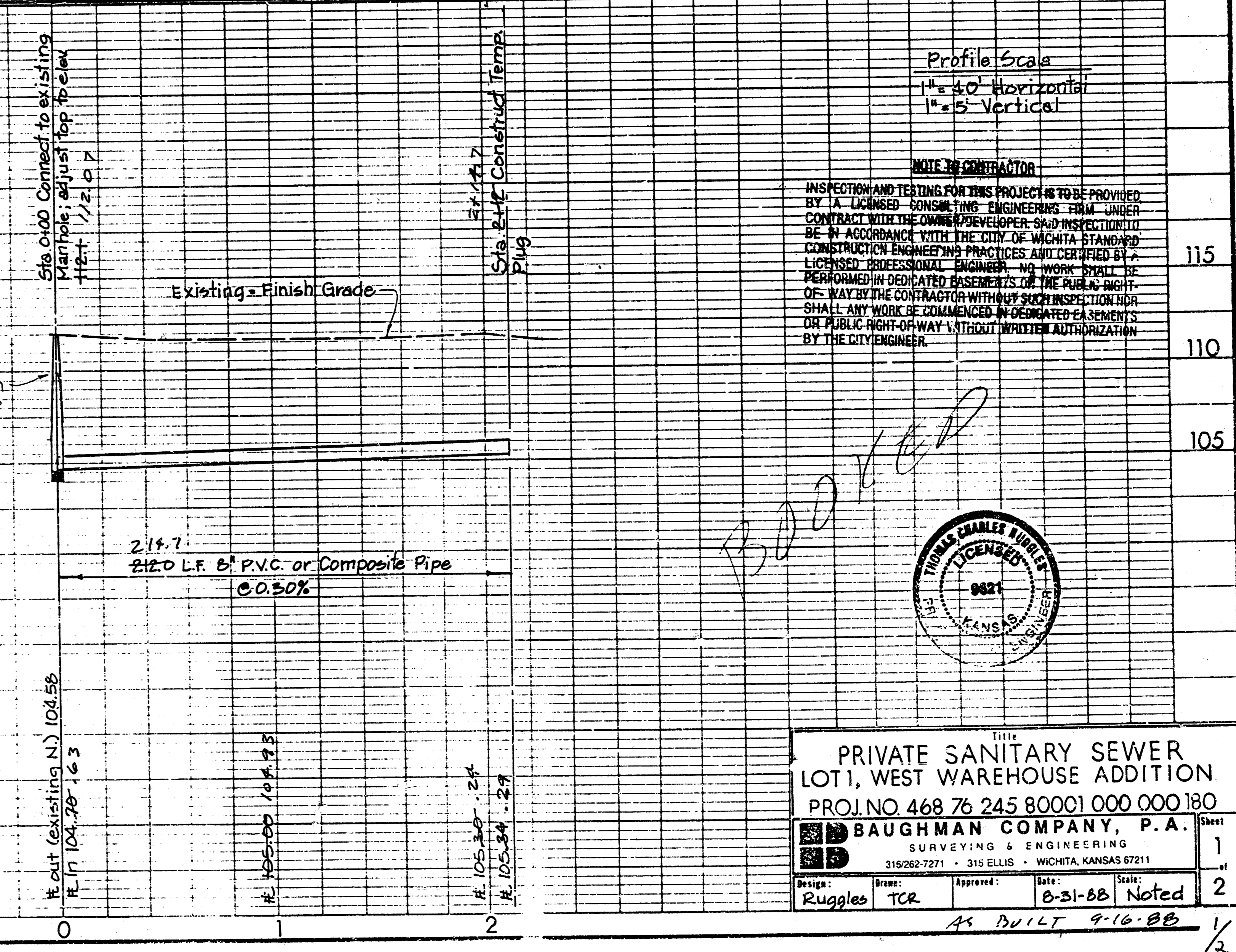


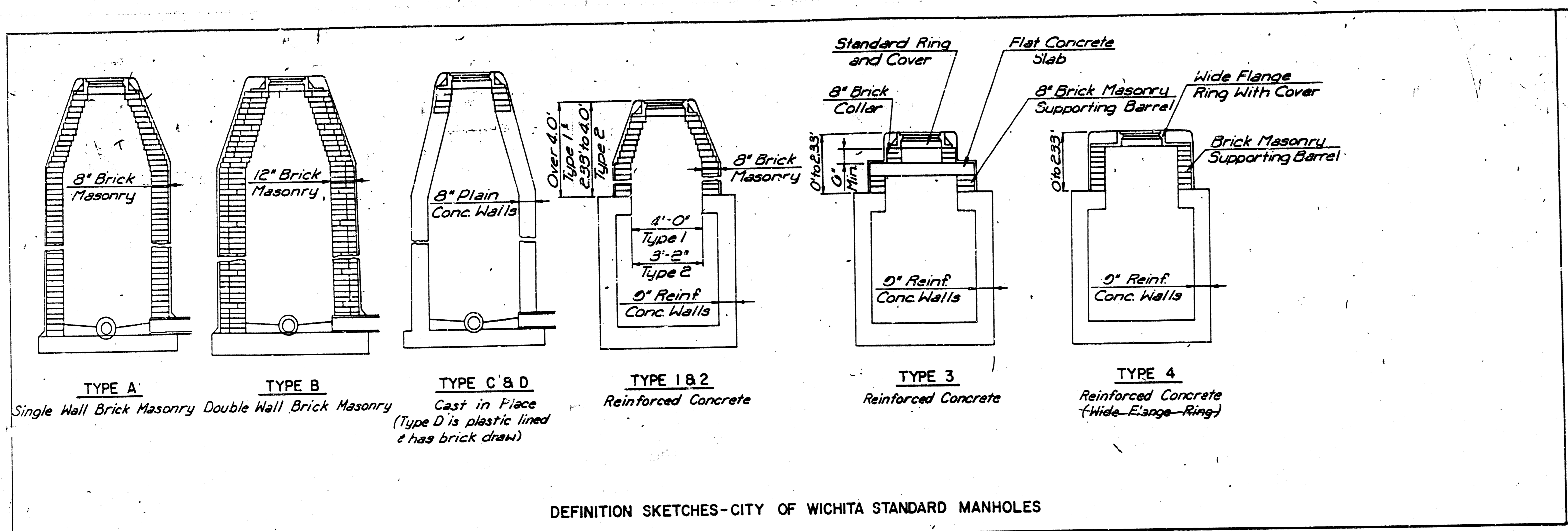
APPROVED AS NOTED
 By CITY ENGINEER OF WICHITA
 Sanitary Sewers *EBB 10/2/08*
 Storm Sewers _____
 Driveway Approaches _____
 Water Mains _____
 Paving _____

BENCH MARKS:
 City Sta. D10C, 55' W. of 43's. & Harry & West; elev. 111.77
 SW. Cor. of retaining wall on w. side of bldg., sta. 1+69, 110' rt.; elev. 113.32

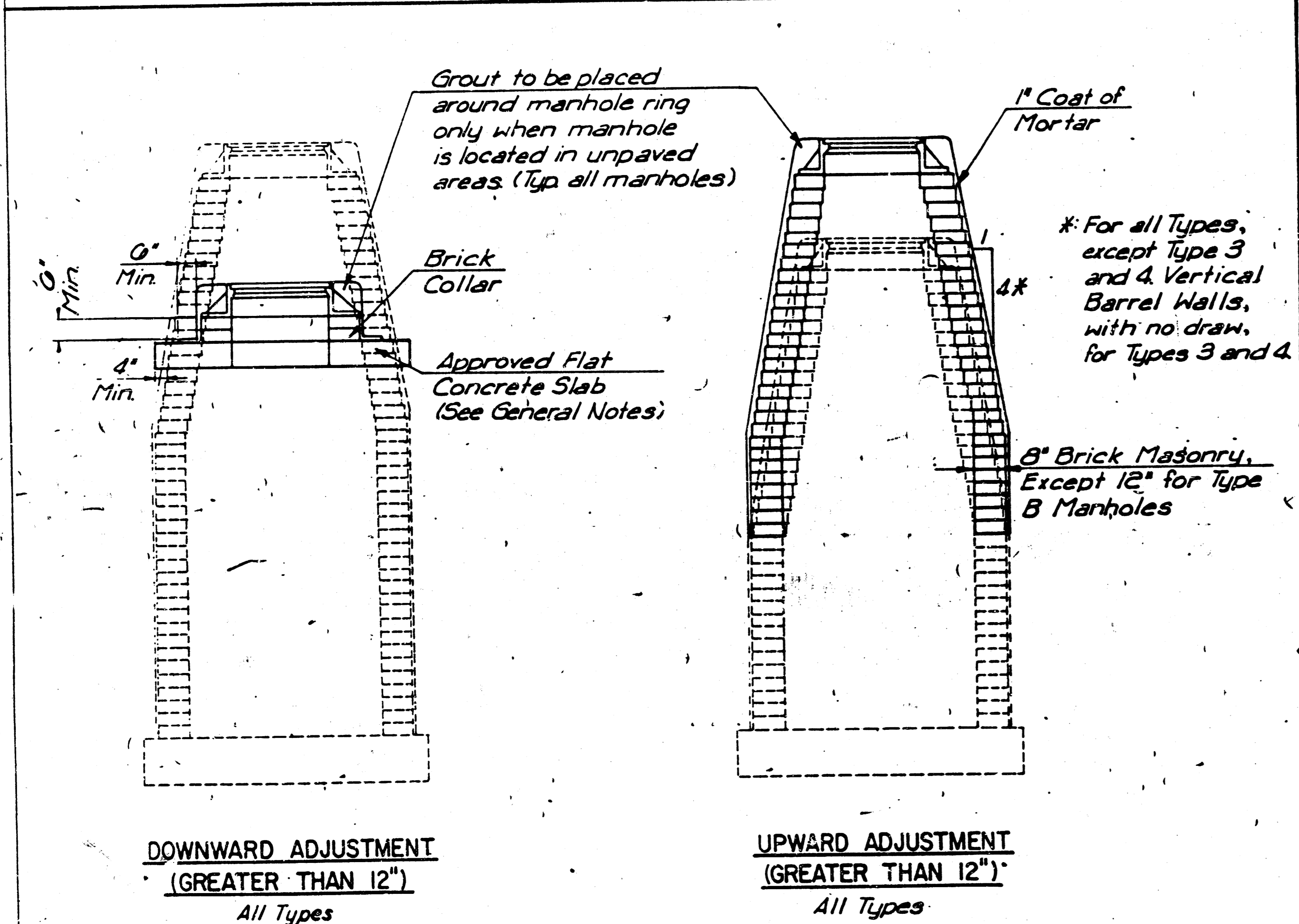


PRIVATE SANITARY SEWER LOT 1, WEST WAREHOUSE ADDITION
 PROJ. NO. 468 76 245 80001 000 000 180
BAUGHMAN COMPANY, P.A.
 SURVEYING & ENGINEERING
 315-282-7271 • 315 ELLIS • WICHITA, KANSAS 67211
 Design: Ruggles TCR Approved: _____ Date: 8-31-08 Scale: Noted
 AS BUILT 9-16-08

FILMED FROM THE BEST AVAILABLE COPY

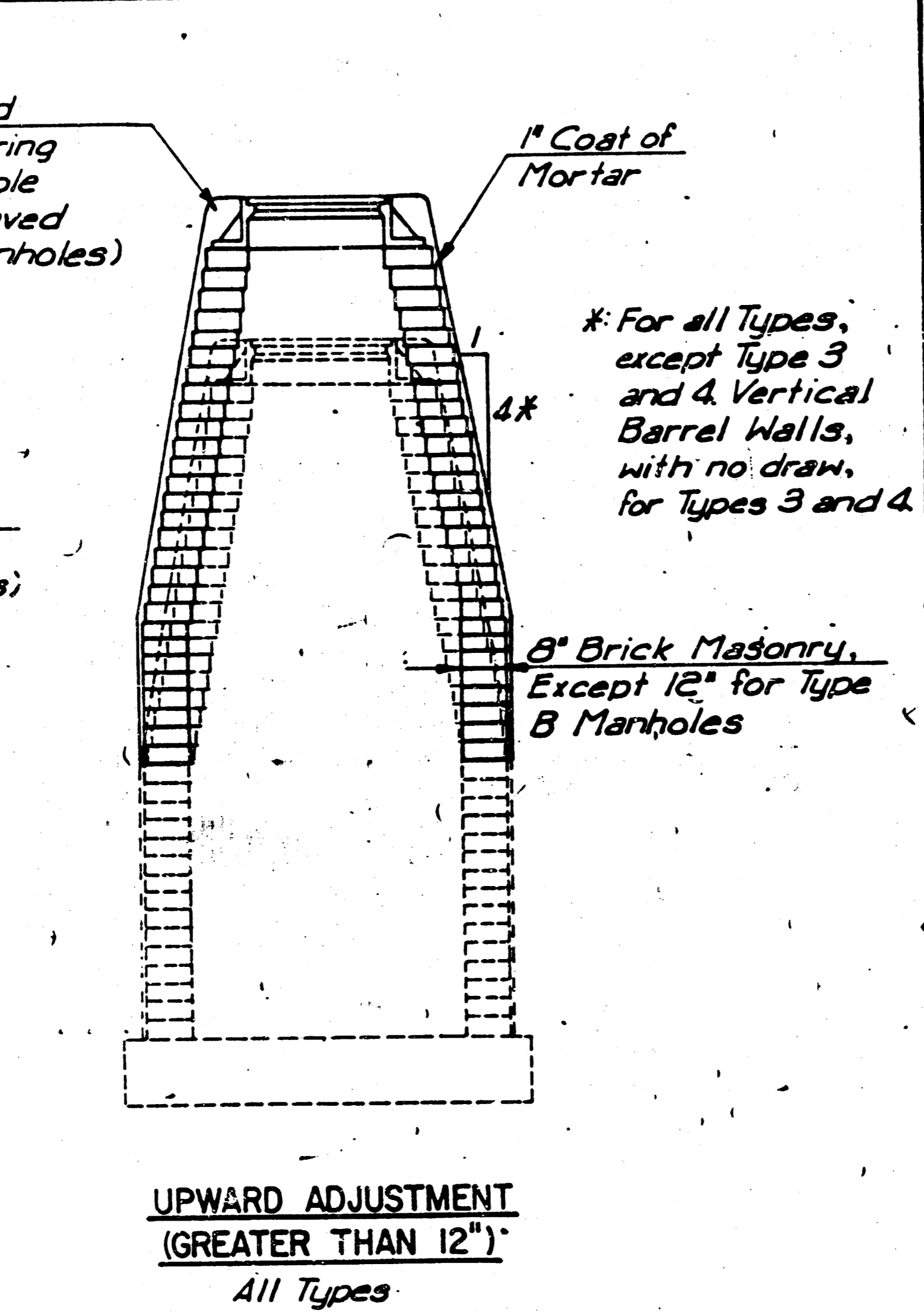


DEFINITION SKETCHES-CITY OF WICHITA STANDARD MANHOLES

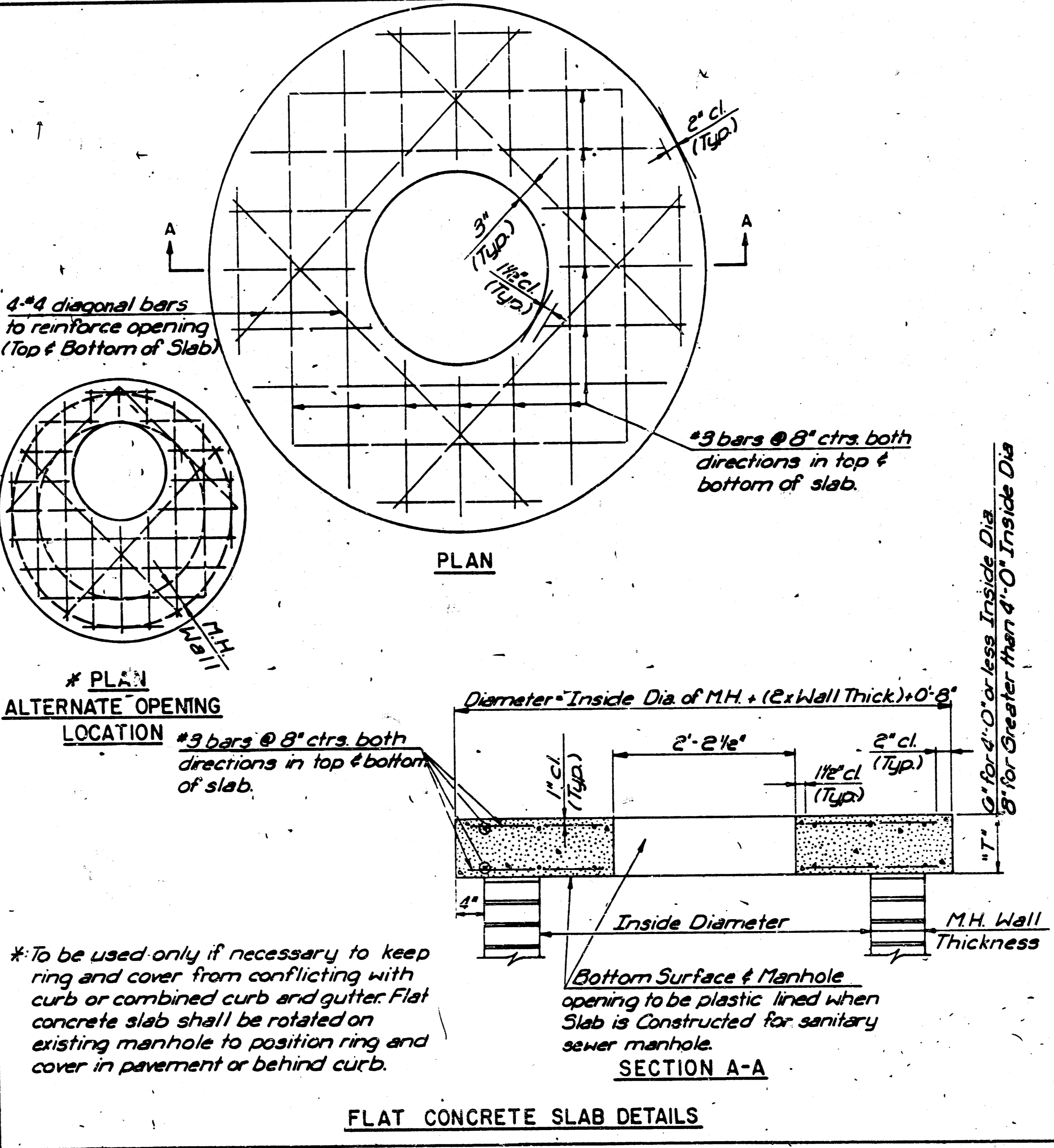


THE APPROPRIATE PORTIONS OF THE DRAW AND BARREL OF TYPE A, B, C, D, 1 AND 2 MANHOLES SHALL BE REMOVED, A FLAT CONCRETE SLAB SHALL BE PLACED AND THE RING AND COVER RESET. ALL WORK AND MATERIALS SHALL CONFORM TO THE DETAILS SHOWN AND THE GENERAL NOTES.

COURSES OF BRICK BARREL SUPPORTING THE WIDE FLANGE RING FOR TYPE 4 MANHOLES AND FLAT CONCRETE SLAB FOR TYPE 3 MANHOLES SHALL BE REMOVED AS NECESSARY PRIOR TO RESETTING THE WIDE FLANGE RING OR FLAT CONCRETE SLAB AND RING. ALL WORK AND MATERIALS SHALL CONFORM TO THE DETAILS SHOWN AND THE GENERAL NOTES.



THE ENTIRE DRAW OF TYPES A, B, C, D, 1 AND 2 MANHOLES SHALL BE REMOVED, THE MANHOLE BARREL RAISED THE APPROPRIATE AMOUNT, A NEW DRAW CONSTRUCTED, AND THE RING AND COVER RESET. THE UPPER PORTION OF TYPE 3 MANHOLES SHALL BE REMOVED TO THE BOTTOM OF THE FLAT CONCRETE SLAB, THE BRICK MASONRY BARREL SUPPORTING THE SLAB SHALL BE RAISED THE APPROPRIATE AMOUNT, AND THE SLAB AND RING AND COVER RESET. THE WIDE FLANGE RING AND COVER OF TYPE 4 MANHOLES SHALL BE REMOVED, THE BRICK MASONRY BARREL SUPPORTING THE RING SHALL BE RAISED THE APPROPRIATE AMOUNT AND THE RING AND COVER RESET. ALL WORK REQUIRED FOR A GREATER THAN TWELVE INCH (12\") UPWARD ADJUSTMENT OF ANY MANHOLE SHALL BE ACCOMPLISHED WITH BRICK MASONRY IN ACCORDANCE WITH THE DETAILS SHOWN AND THE GENERAL NOTES.



*To be used only if necessary to keep ring and cover from conflicting with curb or combined curb and gutter. Flat concrete slab shall be rotated on existing manhole to position ring and cover in pavement or behind curb.

MANHOLE ADJUSTMENT DETAILS	
PROJ. NO. 468 76 245 80001 000 000 180	
CITY OF WICHITA, KANSAS	
M. E. LINDEBAK - CITY ENGINEER	
Designed by	Checked by
Drawn by	Date
	JOB No.