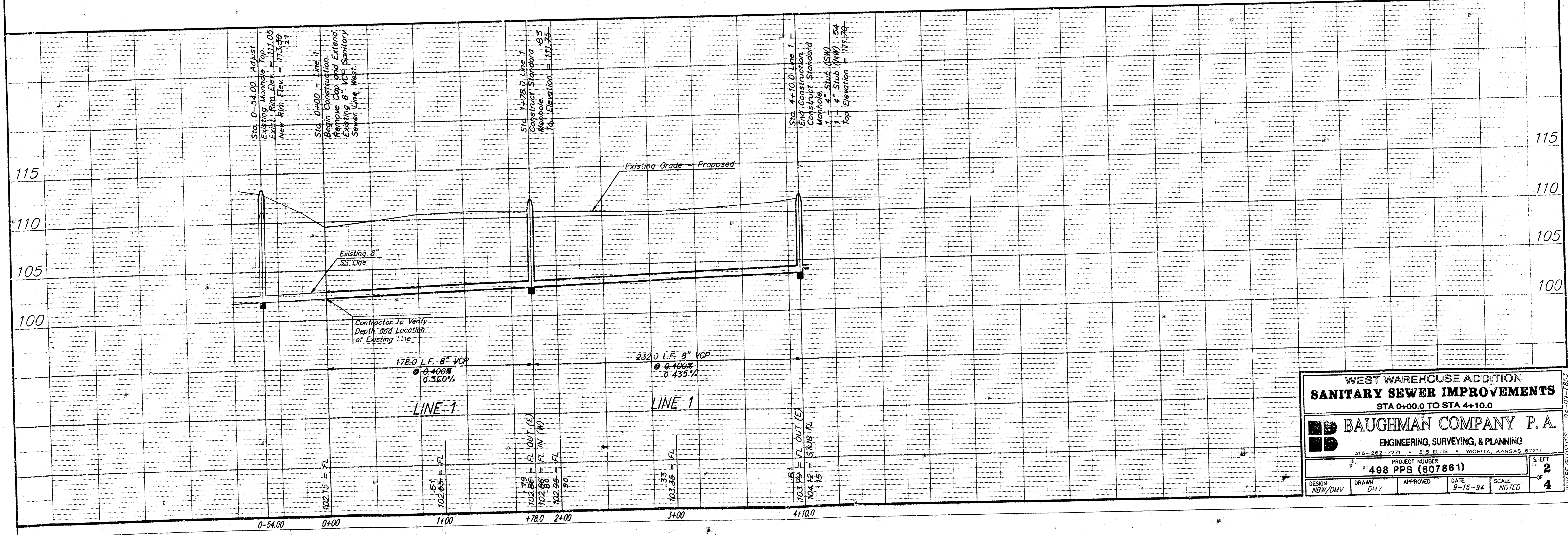


Scale:  
 1" = 40' Horizontal  
 1" = 5' Vertical  
 • = Iron

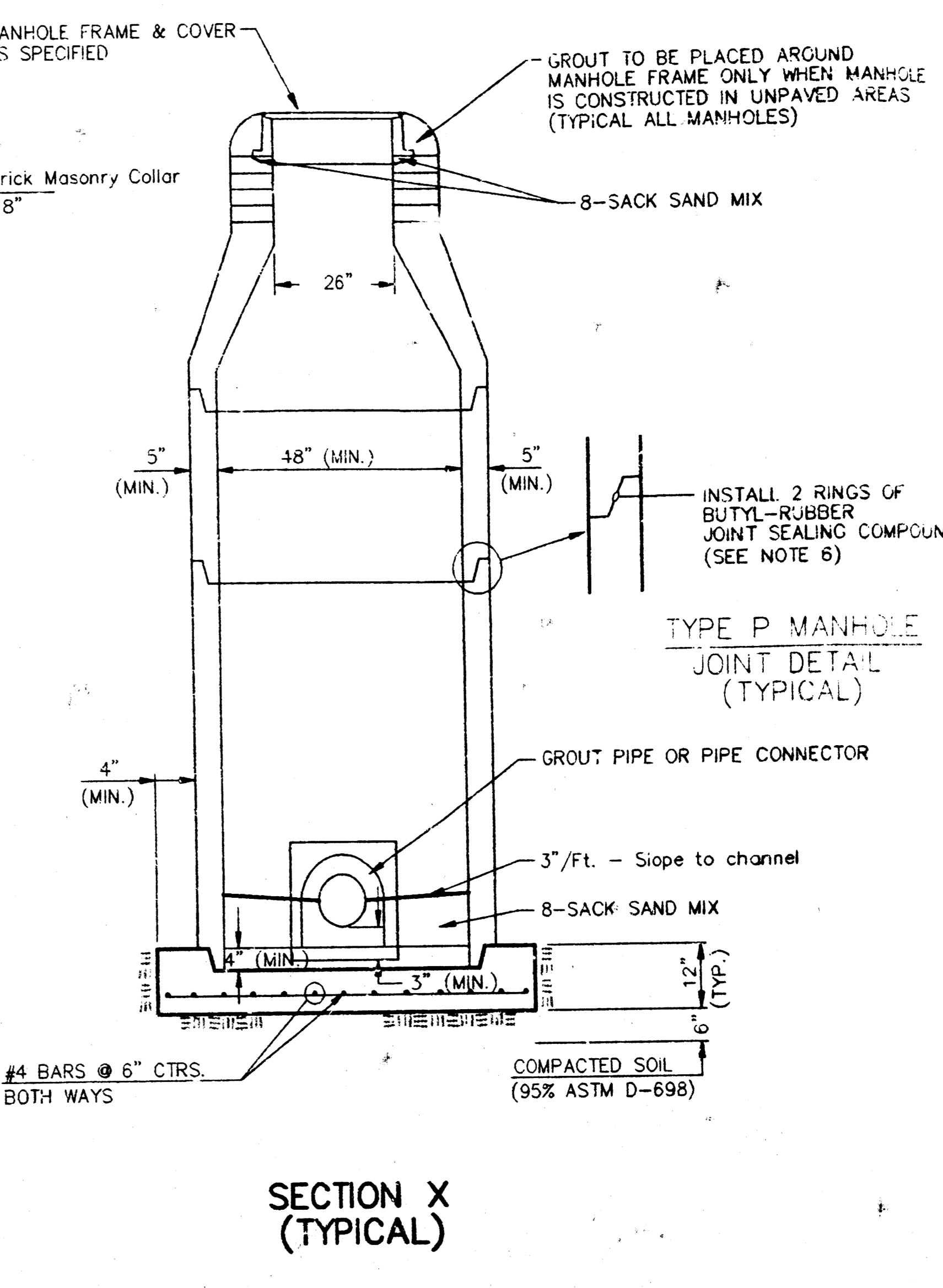
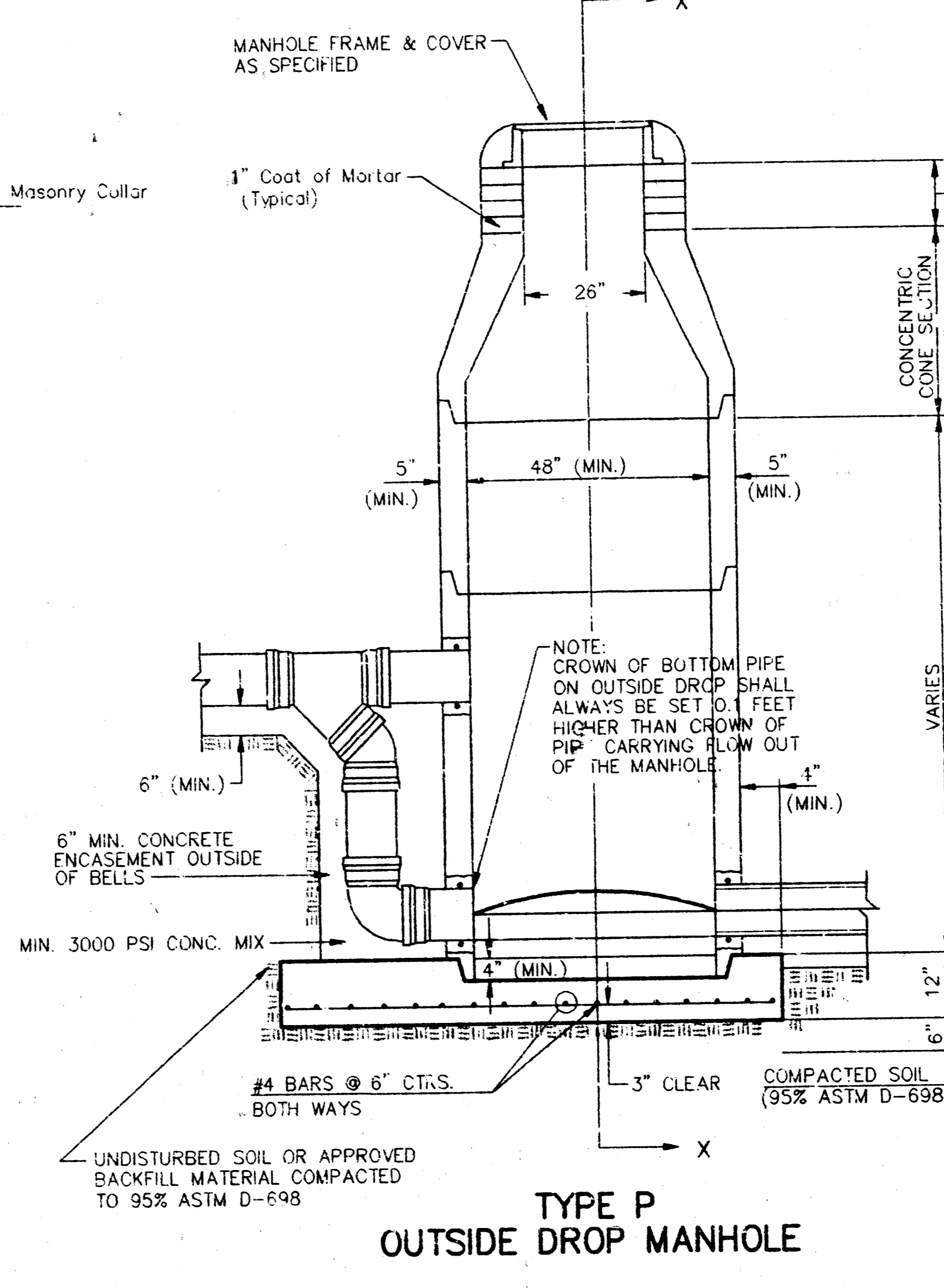
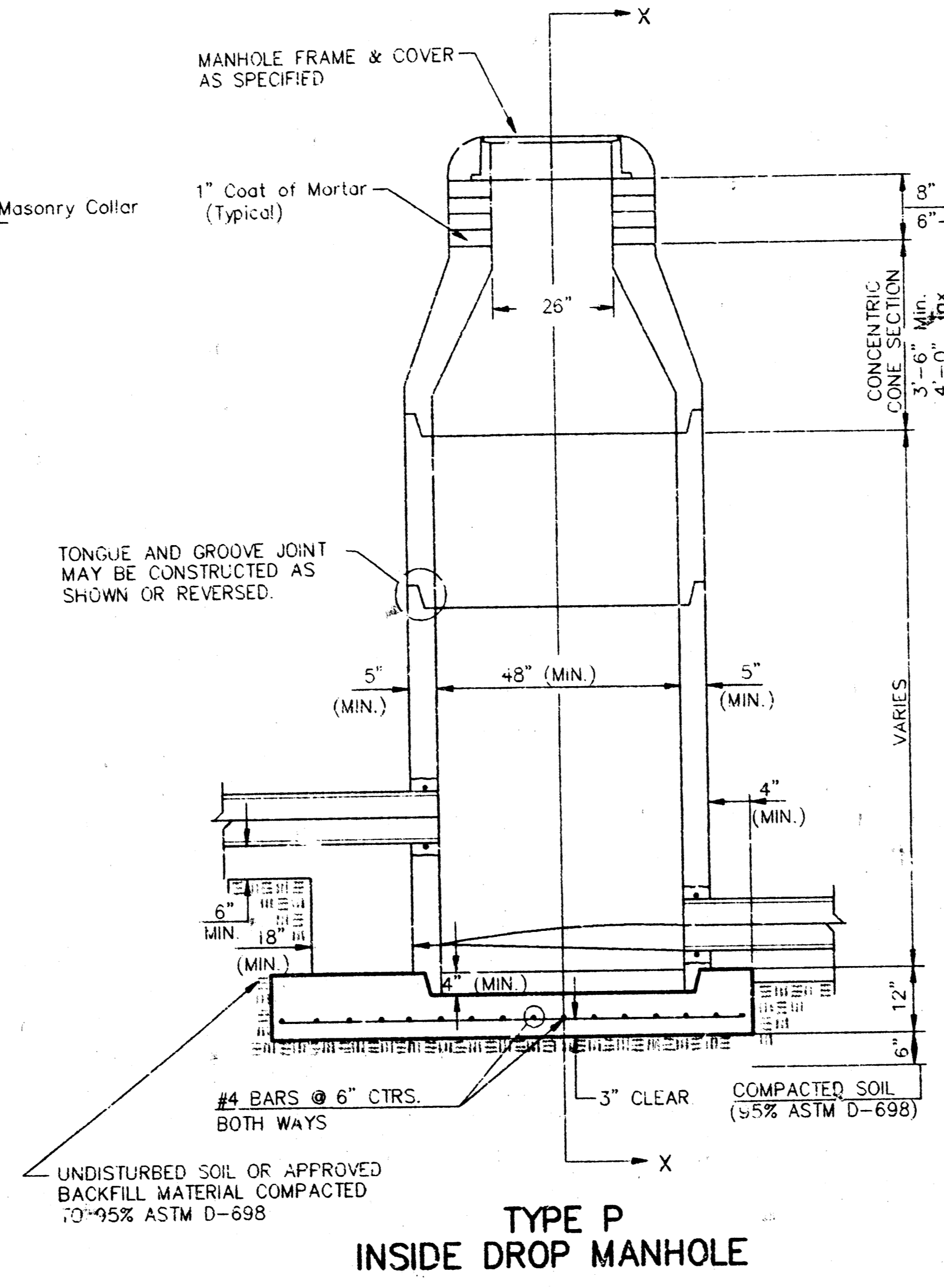
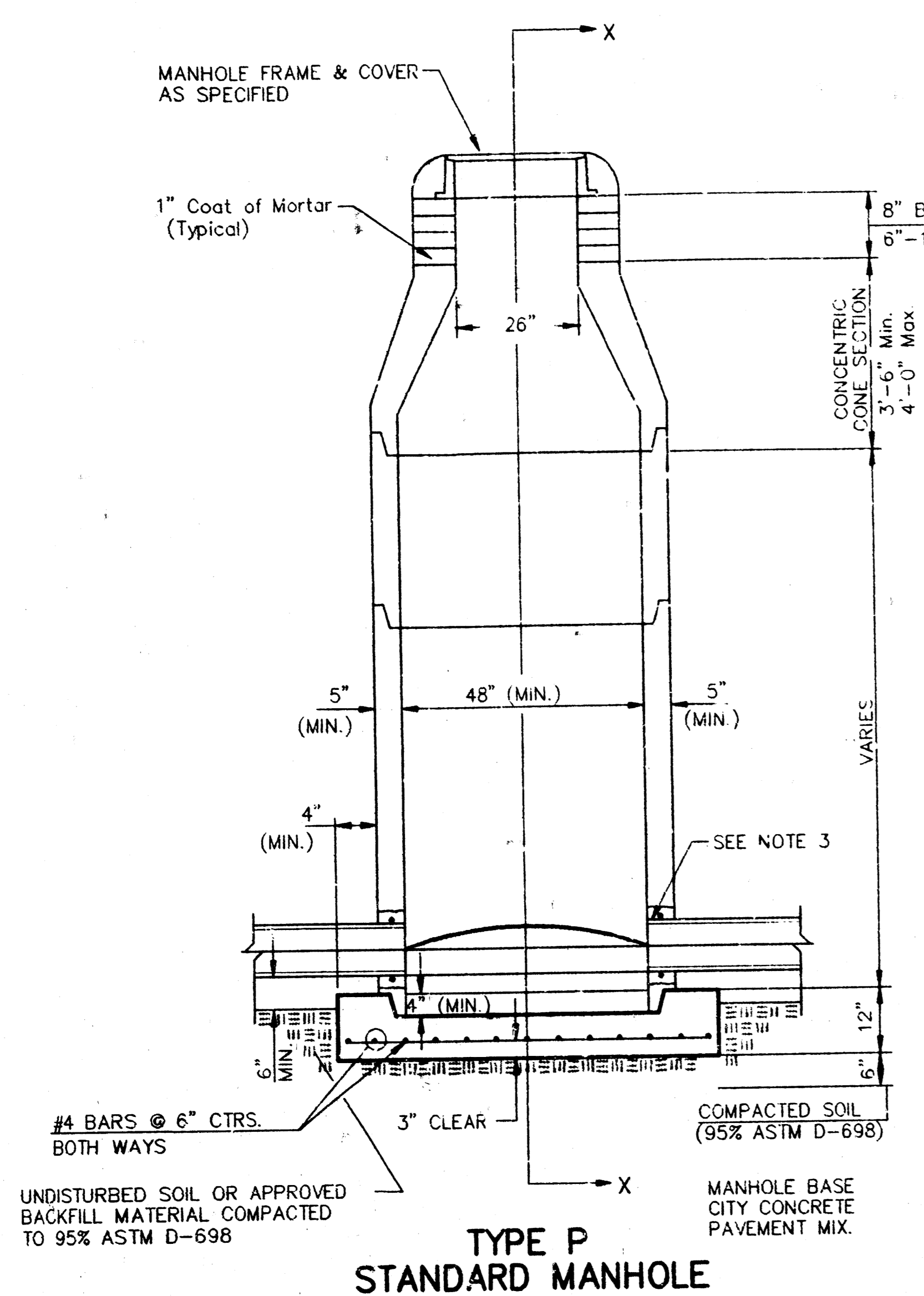
**BENCHMARKS:**  
 "C" Cut in Top of Curb Located 19' South and 5.5' West of Southwest Corner of Lot 8, Block 4, West Warehouse Addition.  
 Elevation = 110.91 City Datum  
 "D" Cut in Top of Curb Located 60' West of E of Kessler and 23' South of E of Dora.  
 Elevation = 111.99 City Datum

Note: Contractor to Verify Location and Flow of Existing 8" Sanitary Sewer.  
 Remove and Replace Chain Link Fence as Necessary for Construction. Cost of Removal and Replacement to be Incidental to Project Cost.



<b>WEST WAREHOUSE ADDITION</b> <b>SANITARY SEWER IMPROVEMENTS</b> STA 0+00.0 TO STA 4+10.0			
<b>BAUGHMAN COMPANY P. A.</b> ENGINEERING, SURVEYING, & PLANNING <small>316-262-2221 • 315 ELLIS • WICHITA, KANSAS 67211</small>			
PROJECT NUMBER <b>498 PPS (607861)</b>			SHEET <b>2</b> OF <b>4</b>
DESIGN NEW/DMV	DRAWN DMV	APPROVED	DATE 9-15-94 SCALE NOTED

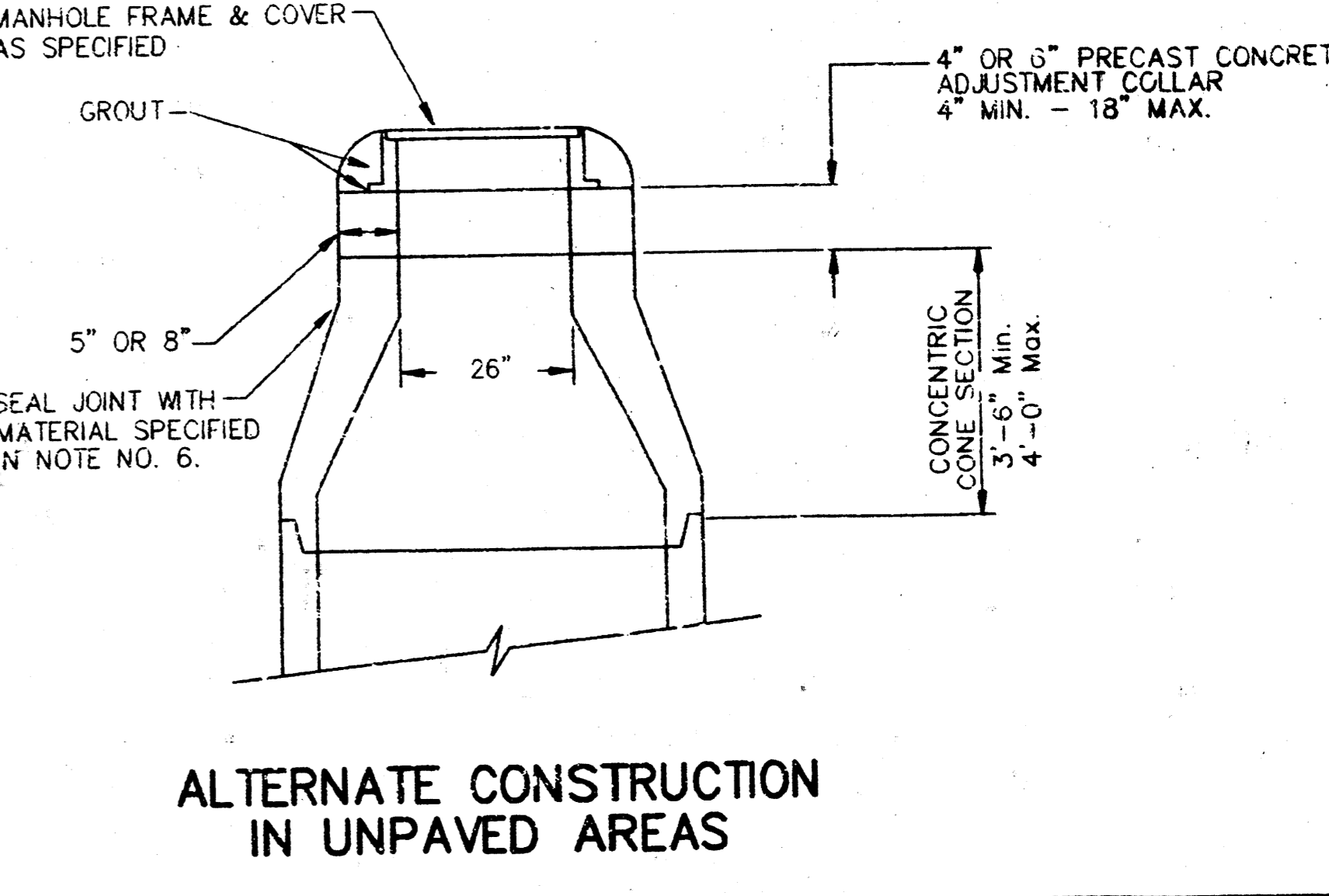
# SEWER APPURTENANCES DETAILS



- GENERAL NOTES**
- PRECAST MANHOLE NOTES**
- ALL PRECAST CONCRETE MANHOLE SECTIONS SHALL CONFORM TO THE LATEST REVISIONS OF A.S.T.M. C478 AS MODIFIED BY THE SPECIFICATIONS.
  - NON-SHRINK GROUT SHALL BE NON-METALLIC TYPE.
  - APPROVED FLEXIBLE WATERSTOP GASKETS SHALL BE INSTALLED TO JOIN THE SEWER TO THE MANHOLE WALL WHEN A.B.S. COMPOSITE PIPE OR P.V.C. PIPE IS USED. FOR OTHER TYPES OF PIPE THE SEWER SHALL BE GROUTED IN PLACE WITH NON-SHRINK GROUT. THE SEWER PIPE SHALL BE SUPPORTED WITH CONCRETE ENCASUREMENT A MINIMUM OF 3 FEET FROM THE MANHOLE WALL AND TO THE FIRST JOINT FOR V.C.P. SUCH THAT THE JOINT REMAINS FLEXIBLE.
  - ALL INSIDE SURFACES OF THE CONCRETE MANHOLE WHICH WOULD BE EXPOSED TO SEWER GAS SHALL BE COATED WITH 2 COATS INMEC SERIES 66 HI-BUILD EPOXYLINE, DRY THICKNESS OF 8 MILS (MIN.).
  - EXTERIOR MANHOLE WALLS SHALL BE COATED WITH 1 COAT MOBILARMA 633 BITUMINOUS COATING.
  - JOINT SEALING COMPOUND SHALL BE KENT SEAL NO. 2 OR APPROVED EQUAL.
  - PRECAST MANHOLES SHALL BE SET AT LEAST 4 INCHES INTO THE MANHOLE BASE.
  - TOP OF MANHOLE FLOOR SLAB SHALL BE AT LEAST 3 INCHES BELOW THE FLOW LINE OF THE OUTLET PIPE TO INSURE SUFFICIENT MINIMUM THICKNESS OF SHAPED INVERT.
  - LIFTING HOLES SHALL BE FILLED WITH NON-SHRINK GROUT AND THE INTERIOR SURFACE COATED AS SPECIFIED.
  - MORTAR USED IN MASONRY CONSTRUCTION SHALL CONTAIN 8 SACKS OF CEMENT PER CUBIC YARD. CONCRETE USED IN MANHOLE BASES SHALL CONFORM TO THE REQUIREMENTS OF CONCRETE FOR CONCRETE PAVEMENT CONSTRUCTION AS SPECIFIED IN THE CITY STANDARD PAVING SPECIFICATIONS USING CITY CONCRETE PAVEMENT MIX WITHOUT AIR ENTRAINING ADMIXTURE. MORTAR SHALL BE PLACED AROUND THE MANHOLE RING AS SHOWN ON THE DRAWINGS WHEN MANHOLES ARE CONSTRUCTED IN UNPAVED AREAS. MANHOLES CONSTRUCTED WHERE PIPE SIZES ARE SMALLER THAN 24" SHALL HAVE AN INSIDE DIAMETER OF 4". MANHOLES CONSTRUCTED WHERE PIPE SIZES ARE 24" OR LARGER SHALL HAVE AN INSIDE DIAMETER OF 5". COMPLETED MANHOLE SHALL BE WITHOUT LEAKS AND WATER TIGHT.

- REINFORCING STEEL SHALL BE INSTALLED IN THE MANHOLE BASES AND SHALL CONSIST OF NO. 4 BARS PLACED ON 6" CENTERS IN BOTH DIRECTIONS. THE MANHOLE BASE REINFORCEMENT SHALL BE PLACED AT LEAST 3" ABOVE THE BOTTOM OF THE MANHOLE BASE. ALL COSTS FOR FURNISHING AND INSTALLING REINFORCING STEEL SHALL BE INCLUDED IN THE UNIT PRICE BID FOR THE MANHOLE.
- OPENINGS SHALL BE CUT INTO THE MANHOLE WALL WHEN OUTSIDE DROPS ARE CONSTRUCTED ON EXISTING MANHOLES. SUCH OPENINGS CUT INTO EXISTING MANHOLES SHALL BE AS SMALL AS PRACTICAL TO FACILITATE INSTALLING AND GROUTING THE NEW PIPE IN PLACE. WATERSTOP GASKETS SHALL BE USED WITH P.V.C. AND A.B.S. COMPOSITE PIPE. THE NEW PIPE SHALL BE GROUTED INTO THE OPENING USING AN APPROVED NONSHRINK GROUT FOR THE FULL MANHOLE WALL THICKNESS. THE EXTERIOR OF THE COMPLETED CONNECTION SHALL BE SEALED WITH AN APPROVED BITUMINOUS COATING SUCH THAT THE CONNECTION WILL BE WATER TIGHT. FLOOR OF MANHOLE SHALL BE MODIFIED TO FORM NEW FLOW CHANNEL. FOR THE NEW CONNECTION AS INDICATED BY THE DRAWING. THIS WORK, INCLUDING MODIFICATION OF MANHOLE FLOOR, SHALL BE PAID FOR AT THE UNIT PRICE BID FOR OUTSIDE DROP STACK CONSTRUCTED ON EXISTING MANHOLE.
- THE FLOORS OF ALL MANHOLES SHALL BE SHAPED WITH FLOW CHANNELS SUCH THAT THE MANHOLES WILL BE SELF-CLEANING AND FREE OF AREAS WHERE SOLIDS COULD BE DEPOSITED AS SEWAGE FLOWS THROUGH THE MANHOLE FROM ALL INLET PIPES TO THE OUTLET PIPE. FLOW CHANNELS SHALL BE FORMED TO MATCH THE BOTTOM HALVES OF THE INFLOWING PIPES AND THE OUTFLOWING PIPE AS SHOWN BY THE DRAWINGS EXCEPT FOR INSIDE DROP MANHOLES. FLOW CHANNELS FOR INSIDE DROP MANHOLES SHALL BE CONSTRUCTED AS INDICATED BY THE DRAWING. AREAS OUTSIDE OF THE FLOW CHANNELS SLOPED TOWARD THE FLOW CHANNELS. PIPES LAID THROUGH MANHOLES SHALL HAVE THE TOP HALF REMOVED TO NEAT LINES FOR THE FULL INSIDE DIAMETER OF THE MANHOLE. MANHOLE FLOORS SHALL THEN BE SHAPED AROUND THE BOTTOM HALF OF THE PIPE WHICH FORMS THE FLOW CHANNEL.
- PIPES INSTALLED WITHIN THE EXCAVATION MADE FOR THE MANHOLE SHALL BE GRADED WITH CONCRETE TO THE LIMITS OF THE MANHOLE EXCAVATION. WHEN CLAY PIPE IS USED, THE CRADLE SHALL EXTEND TO THE FIRST JOINT OUTSIDE THE MANHOLE. THE CRADLE SHALL BE TERMINATED AT THE CLAY PIPE JOINT IN A MANNER WHICH WILL MAINTAIN THE FLEXIBILITY OF THE JOINT. COST OF CRADLE WITHIN MANHOLE EXCAVATION OR TO CLAY PIPE JOINTS ADJACENT TO MANHOLE SHALL BE INCLUDED IN THE UNIT PRICE BID FOR THE MANHOLE.

- MANHOLE COVER CASTINGS AND MANHOLE FRAME CASTINGS SHALL CONFORM TO THE REQUIREMENTS AS INDICATED IN THE STANDARD SPECIFICATIONS AND AS SHOWN IN THE STANDARD DETAIL DRAWING.
- THE VERTICAL DROP IN INSIDE DROP MANHOLES SHALL NOT EXCEED 2' FOR INFLOWING PIPES SIZED 12" OR SMALLER AND 2' FOR INFLOWING PIPES LARGER THAN 12". THE CROWNS OF INFLOWING PIPES SHALL NEVER BE SET LOWER THAN THE CROWN OF THE OUTFLOWING PIPE.
- STANDARD MANHOLES AND STANDARD INSIDE DROP MANHOLES SHALL BE BID AS STANDARD MANHOLES FOR THE TYPE AND DIAMETER INDICATED. OUTSIDE DROP MANHOLES SHALL BE BID AS STANDARD OUTSIDE DROP MANHOLES FOR THE TYPE AND DIAMETER INDICATED. ALL MANHOLE DIAMETERS WILL BE 4' UNLESS INDICATED OTHERWISE.
- A BRICK MASONRY COLLAR SHALL BE INSTALLED BETWEEN THE CAST IRON FRAME AND THE CONCENTRIC CONE. THE COLLAR WILL HAVE 8" WALLS AND A VERTICAL HEIGHT OF 6" MINIMUM AND 18" MAXIMUM. A 1" COAT OF MORTAR WILL BE PLASTERED ON THE OUTSIDE OF THE COLLAR. THE USE OF PRE-CAST CONCRETE SPACERS FOR MANHOLE TOP ADJUSTMENT IS ALSO ALLOWED.



**CITY OF WICHITA, KANSAS**  
**STANDARD MANHOLE DETAILS**  
**SEWER APPURTENANCES DETAILS**

**BAUGHMAN COMPANY P. A.**  
 ENGINEERING & SURVEYING  
 316/262-7271 • 315 ELLIS • WICHITA, KANSAS 67211

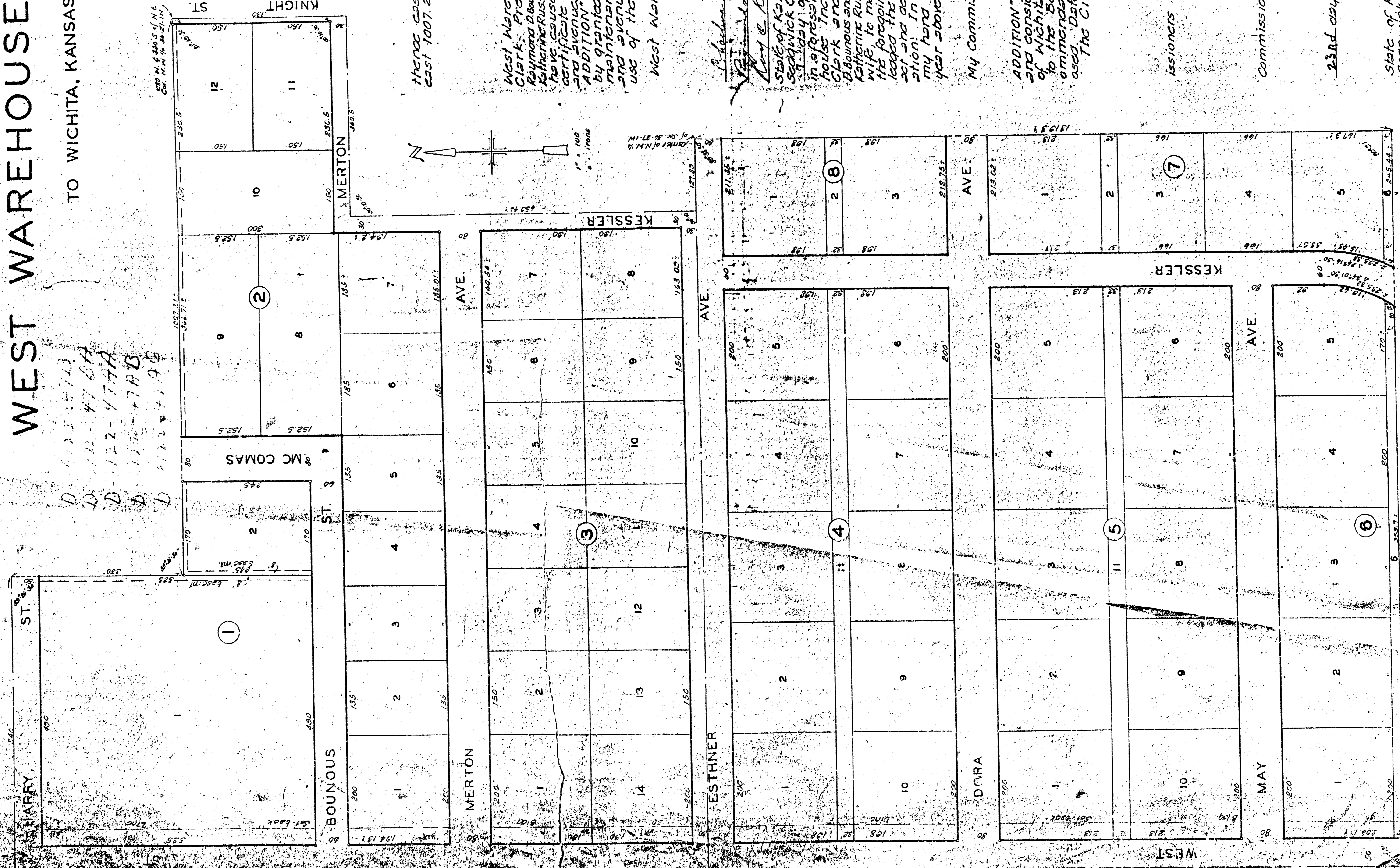
PROJECT NUMBER  
**498 PPS (607861)**

DESIGN DRAWN APPROVED DATE SCALE

REV. **NOV. 1993**  
 SHEET **3** OF **4**

# WEST WAREHOUSE ADDITION

TO WICHITA, KANSAS.



State of Kansas) ss. I, Clare M. Baughman  
 Surveyor in and for said county and state do  
 hereby certify that the survey and  
 plat of WEST WAREHOUSE ADDITION  
 to Wichita, Kansas, and that the accom-  
 panying plat is a true and correct exhib-  
 it of the property surveyed, described  
 as follows: All of the S.W. 1/4 of the N.W. 1/4  
 of Sec. 36, T. 27 S., R. 14 W., 2d Mer. that  
 part of the N.E. 1/4 of said 1/4 Sec. beginning  
 108 feet west and 330 feet south of the  
 N.E. Cor. of said 1/4 Sec. 36, 1/2 section  
 line with the east line of said 1/4 section  
 north line of said 1/4 Sec. 36, 1/2 section  
 there south parallel with the east line  
 of said 1/4 Sec. 16.50, 46 feet north of the  
 to the south line of said N.W. 1/4 there  
 west to the S.W. Cor. of said N.W. 1/4 there  
 north to the N.W. Cor. of said 1/4 Sec. 36  
 there east 540 feet; thence south 330 feet; thence  
 east 1007.21 feet, more or less to the piece of beginning.

Know all men by these presents  
 West Warehouse Inc., a corporation by U.R.  
 Clark, President and Frank M. Kessler, Secretary,  
 Raymond Dounous and Charlene Mounous, his wife, Roy C. Russell and  
 Katherine Russell, his wife, R.J. King and Roseline J. King, his wife,  
 have caused the being described in the survey  
 certificate to be platted into lots blocks streets  
 and avenues to be known as "WEST WAREHOUSE  
 ADDITION" to Wichita, Kansas. Essoements are her-  
 by granted as indicated for the construction, use  
 and maintenance of all public utilities. The streets  
 and avenues are hereby dedicated to and for the  
 use of the public.

West Warehouse Inc., a corporation  
W.R. Clark President  
Frank M. Kessler Secretary

State of Kansas) ss. As I remember that on this  
 23rd day of January, 1957, before me a Notary Public  
 in and for said county and state, came West Ware-  
 house Inc., a corporation by its President U.R.  
 Clark and Secretary Frank M. Kessler, and Raymond  
 Dounous and Charlene Mounous, his wife, Roy C. Russell and  
 Katherine Russell, his wife, R.J. King and Roseline J. King, his  
 wife, to me known to be the same persons who executed  
 the foregoing instrument of writing and duly acknowl-  
 edged the execution of the same as their voluntary  
 act and deed and as the act and deed of said corpo-  
 ration. In testimony whereof I have hereunto set my  
 hand and affixed my notarial seal the day and  
 year above written.

William Chastain Notary Public  
 My Commission Expires 10-21-58

This plat of WEST WAREHOUSE  
 ADDITION to Wichita, Kansas, has been submitted to  
 and considered by the City Planning Commission  
 of Wichita, Kansas, and is hereby transmitted  
 to the Board of City Commissioners with the rec-  
 ommendation that such plat be approved and  
 used. Dated this 18 day of January, 1957.

The City Planning Commission of Wichita,  
W. Chastain Chairman

Approved by the Board of City Comm-  
 issioners this 23rd day of January, 1957.

W. Chastain Mayor  
W. Chastain City Clerk

Approved by the Board of County  
 Commissioners this 23rd day of January, 1957.

W. Chastain County Clerk

Entered on transfer record, this  
 23rd day of January, 1957.

State of Kansas) ss. This is to certify that this plat  
 was filed for record in the office of the Register of  
 Deeds, this 23rd day of January, 1957, at 2:00 o'clock, P.  
 M., and is duly recorded.

Richard E. Dunning Register of Deeds