

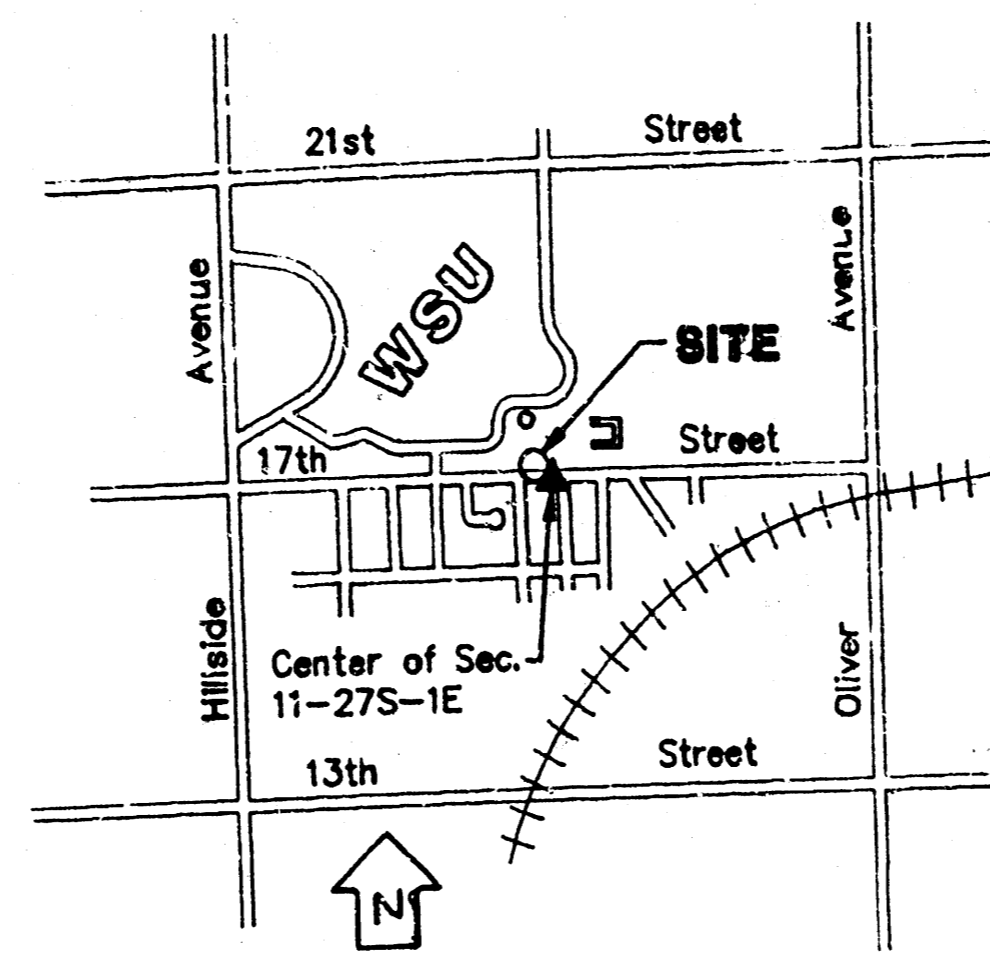
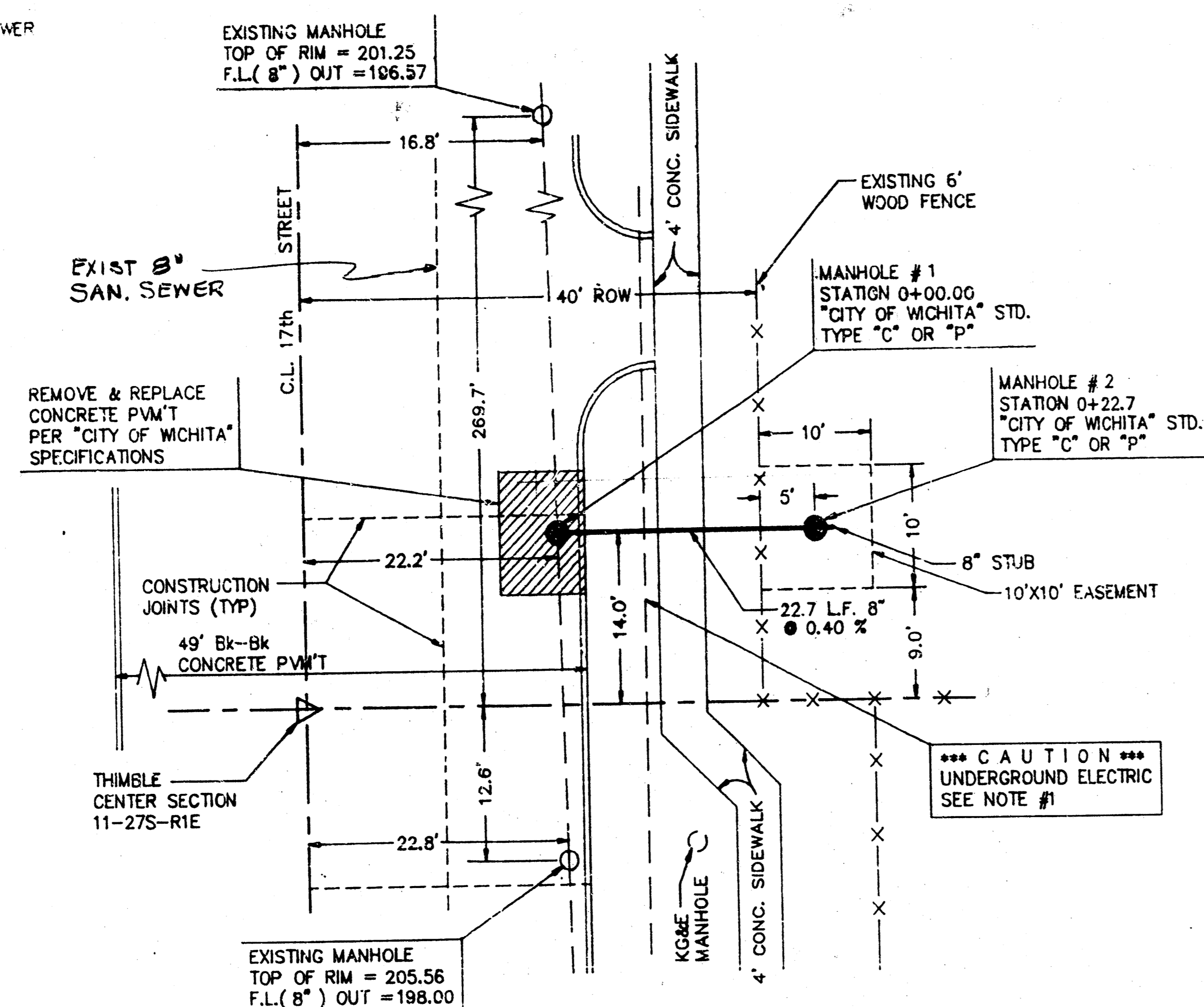
SANITARY SEWER PLANS
FOR WSU PHYSICAL PLANT
WICHITA, KANSAS

Law Kingdon, Inc.
 Architects & Engineers
 345 Riverview
 Wichita, Kansas
 (316) 268-0230

DATE: _____
 REVISION: _____

LEGEND

- EXISTING SANITARY SEWER
- NEW SANITARY SEWER
- EXISTING MANHOLE
- NEW MANHOLE
- ▨ REMOVE & REPLACE CONCRETE PAVEMENT



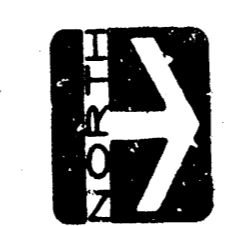
VICINITY MAP
 1"=200'

- GENERAL NOTES**
- Notify the following companies prior to any trenching:
 - Arkla Gas Co. 942-8050
 - Bell Telephone 571-2115
 - Cablevision 268-5317
 - Gas Service Co. 263-7511
 - Kansas Gas and Electric 261-6248
 - Kansas One Co. 1-800-244-7233
 - All block corners and control points will be protected. If removed during construction, contractor will have them replaced by a licensed land surveyor at his expense.
 - All sanitary sewer lines and manholes shall be installed in accordance with "City of Wichita" Standards and Specifications.
 - There is to be no work started by the Contractor prior to notification and approval of the Chief Engineer of Construction and Survey, City of Wichita Operations and Maintenance Department and the assignment and presence of a Sewer Inspector on the construction site. Should construction be started prior to these requirements being met, the Contractor will be required to re-open any ditches that may have been backfilled.
 - Pavement removal and replacement and backfill of trenches to meet "City of Wichita" standards and specifications. Contractor to make arrangements with the "City of Wichita" Traffic Engineering Department for traffic control while working on the existing street.

NOTE TO CONTRACTOR

This project will be constructed under the supervision of the CITY ENGINEER and conforming to the SPECIFICATIONS of the CITY OF WICHITA. The CONTRACTOR will pay the City of Wichita for all costs of plan, review, inspection and booking per contract.

APPROVED AS SHOWN
 By CITY ENGINEER OF WICHITA
 Sanitary Sewers VRH 11/10/87
 Storm Sewers _____
 Driveway Approaches _____
 Water Mains _____



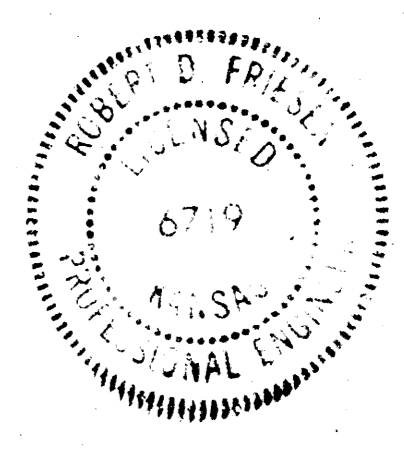
A

PLAN AND PROFILE

SCALE: PLAN — 1"=10'
 PROFILE — 1"=10' HORIZ.
 1"=5' VERT.

PRIVATE SAN. SEWER EXTENSION
 TO SERVE EXPANSION AT WSU
 468-76-245-80001-000-000-141

PROOFED



BM #1: CITY STD. DISC. 34" N & 34" E
 OF THE SW COR. NE 1/4 SEC. 11, T21S, R1E (E.L. = 207.54)

LINE 1

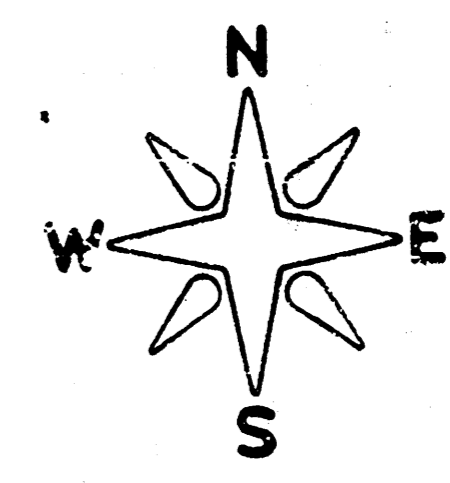


SANITARY SEWER PLANS

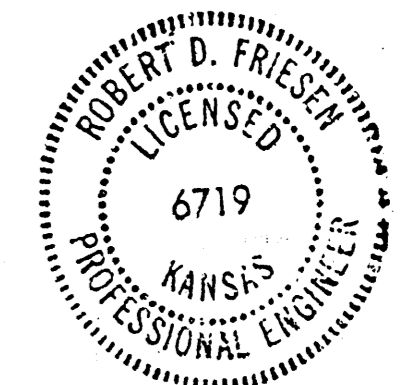
FOR WSU GOLF
MAINTENANCE BUILDING
WICHITA, KANSAS

LAW/KINGDON, INC.
ARCHITECTS & ENGINEERS
348 Riverside
Mobile, Kansas
(316) 268-0230

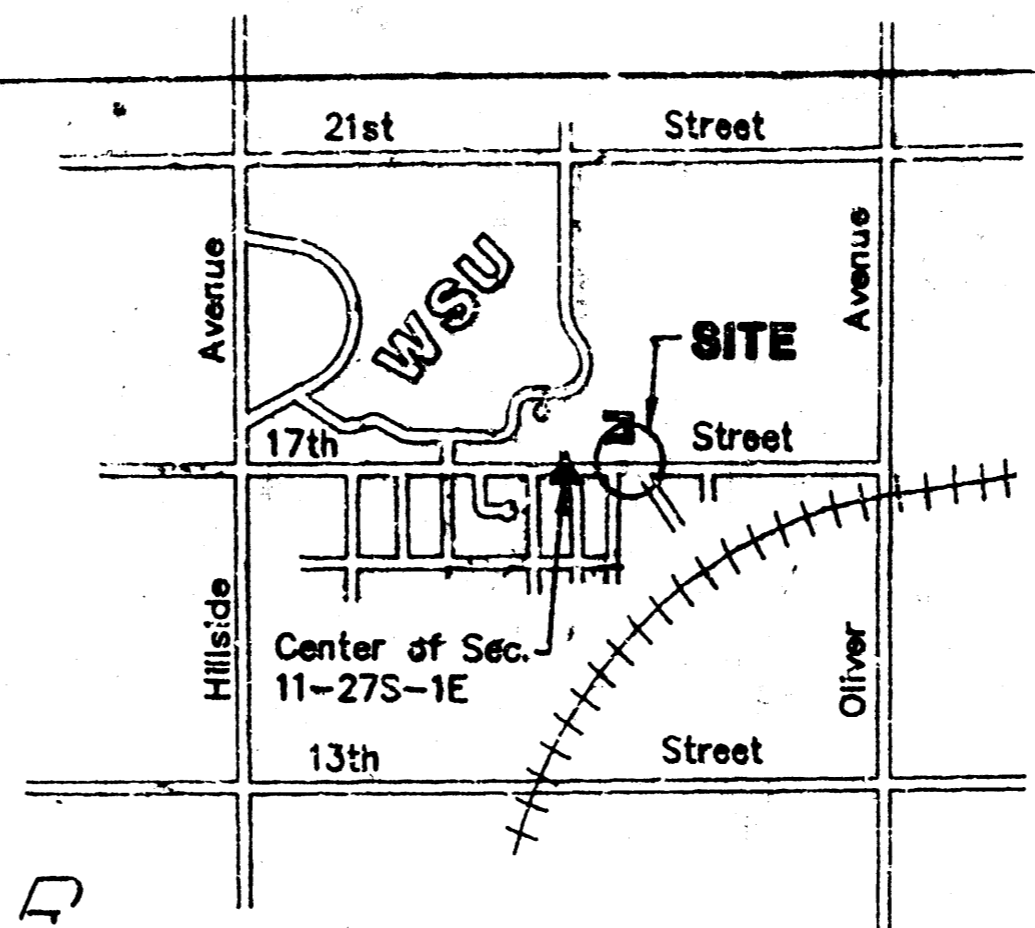
DATE: 10/2/87
SHEET OF: 40



- Legend -
- M.H. = Manhole
 - S.S. = Sanitary Sewer
 - O.E. = Overhead Electric
 - U.E. = Underground Electric
 - U.T. = Underground Telephone
 - USLC = Underground Street Light Circuit
 - PP = Power Pole
 - L.P. = Light Pole
 - SLC = Street Light Circuit



- GENERAL NOTES**
- Notify the following companies prior to any trenching.
 - Arkla Gas Co. 942-8350
 - Bell Telephone 571-2115
 - Cablevision 268-6817
 - Gas Service Co. 263-7511
 - Kansas Gas and Electric 261-6248
 - Kansas One Call 1-800-344-7233
 - All block corners and control points will be protected. If removed during construction, Contractor will have them replaced by a licensed engineer or land surveyor at his expense.
 - All sanitary sewer lines and manholes shall be installed in accordance with "City of Wichita" Standards and Specifications.
 - Make arrangements with Electric company to trench by the power pole and guy wires.
 - There is to be no work started by the Contractor prior to notification and approval of the Chief Engineer of Construction and Survey, City of Wichita Operations and Maintenance Department and the assignment and presence of a Sewer Inspector on the construction site. Should construction be started prior to these requirements being met, the Contractor will be required to re-open any ditches that may have been backfilled.

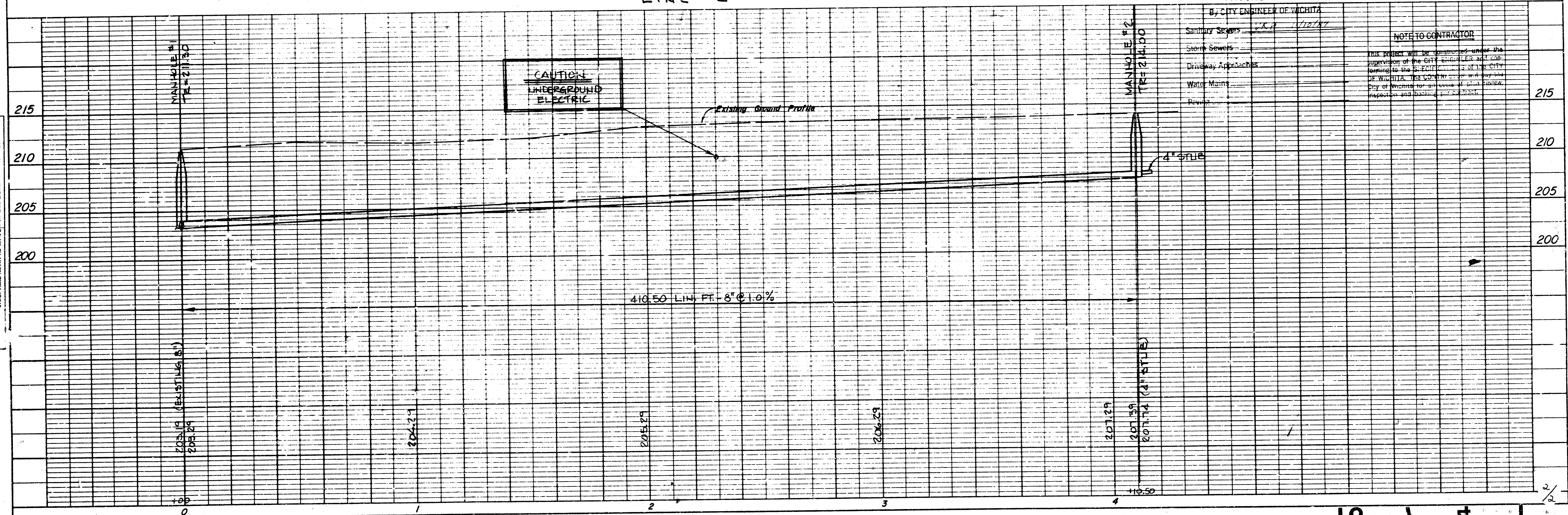
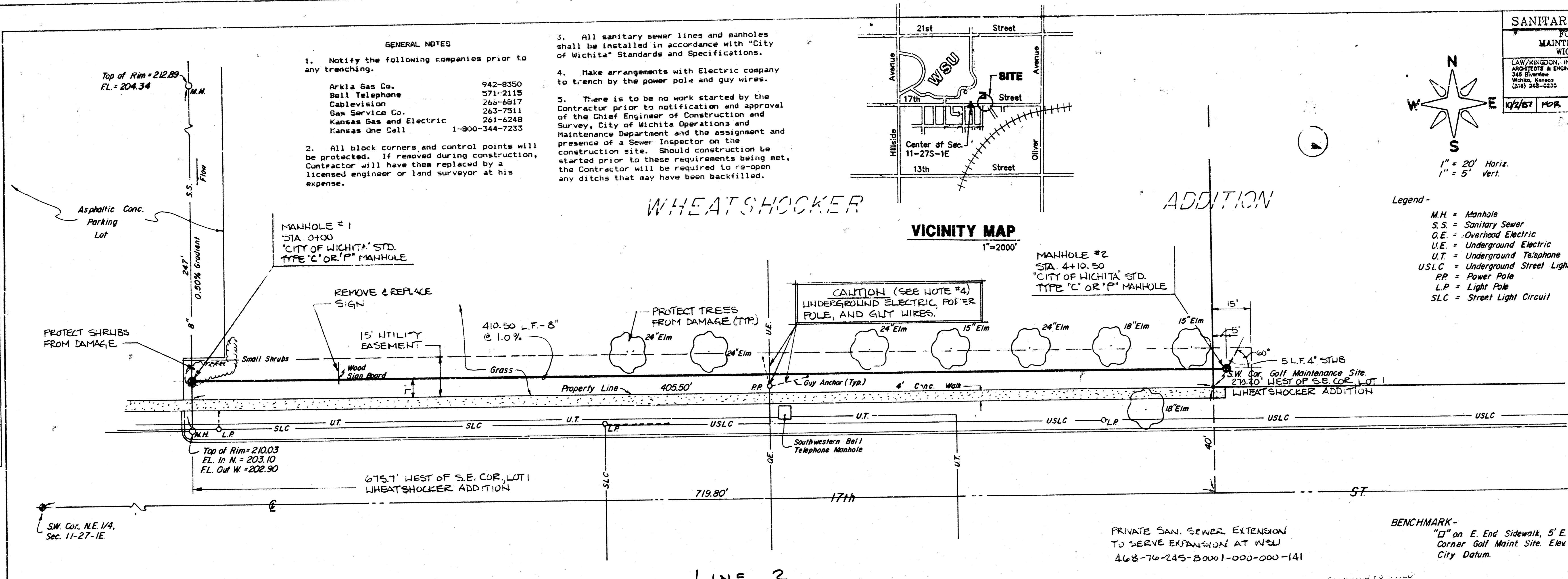


DATE: _____ BY: _____

PLAN: _____

NOTE BOOK: _____

NO. _____



By CITY ENGINEER OF WICHITA

Sanitary Sewers	10/2/87
Storm Sewers	
Driveway Approaches	
Water Mains	
Revised	

NOTE TO CONTRACTOR

This project will be constructed under the supervision of the City Engineer and will conform to the City of Wichita Standards and Specifications for Sanitary Sewers. The Contractor will be responsible for all utility relocation and protection.

FILMED FROM THE BEST AVAILABLE COPY....