

Plan Scale 1" = 40'

B. M. 154.28  
Linden & Douglas  
C. O. W. Bench Mark  
Disc. Top of E. End  
N. Abutment to R.C.B.  
W. of Linden.

Plan Sta. 1+53.94  
Remove exist. M.H. wall down  
to exist. ground surface.  
Const. new M.H. wall, encase M.H.  
with 6" Reinf. Conc. Encasement  
from 3' below exist. ground  
surface to top of manhole.

Plan Sta. 5+30.0  
Remove exist. M.H. wall down to  
exist. ground surface.  
Const. new M.H. wall, Encase M.H.  
with 6" Reinf. Conc. Encasement from  
below exist. Channel Flo line to top  
of manhole.

**NOTE:**  
Install No. 8 Wire mesh  
in Conc. Encasement.  
Wire mesh is to clear  
1 inch from outside  
surface.

**NOTE:**  
Salvage manhole  
rings and covers.

**NOTE:**  
Install No. 8 wire mesh  
in Conc. Encasement.  
Wire mesh is to clear 1 inch  
from outside surface.

As built 3-2-77

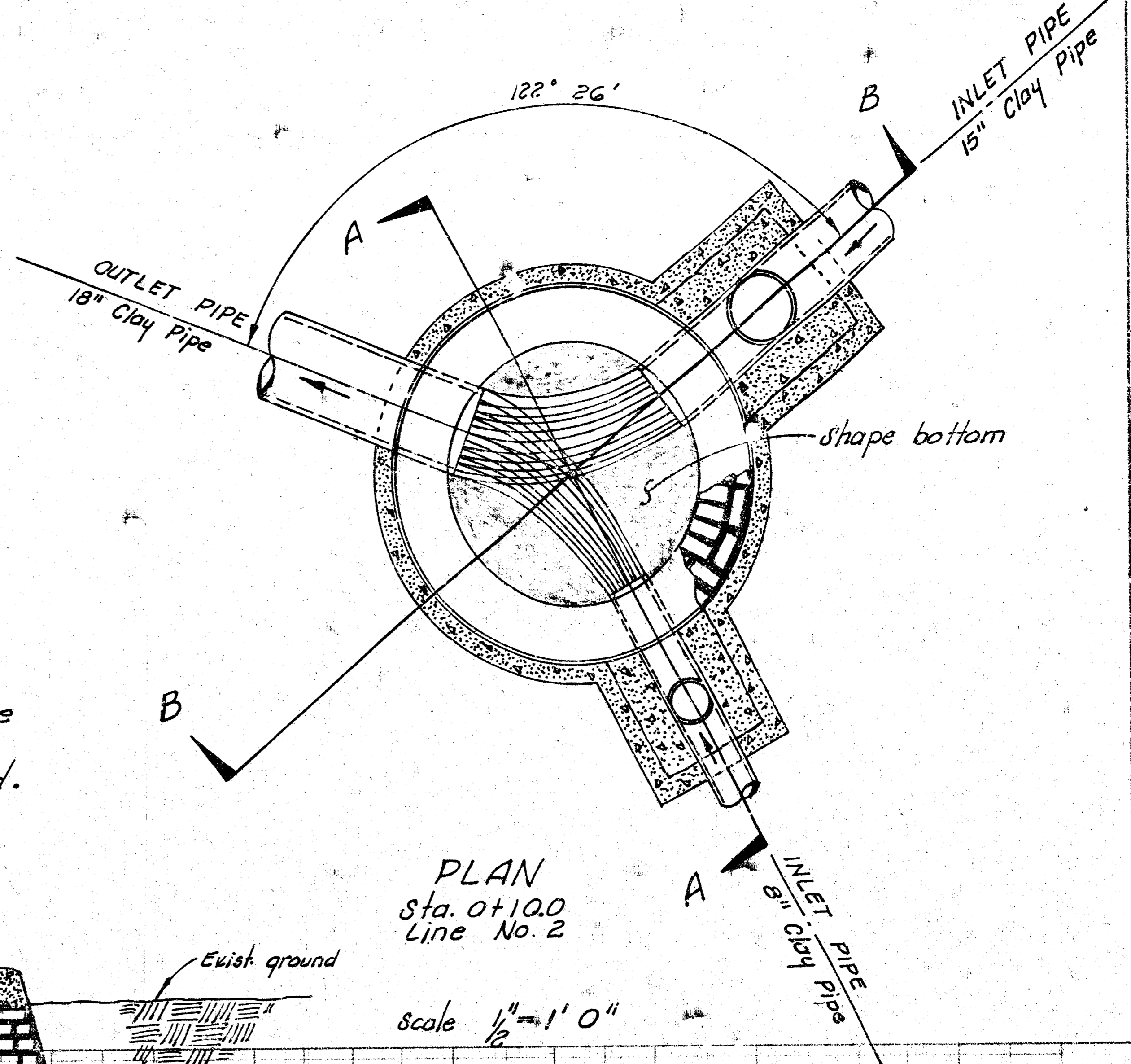
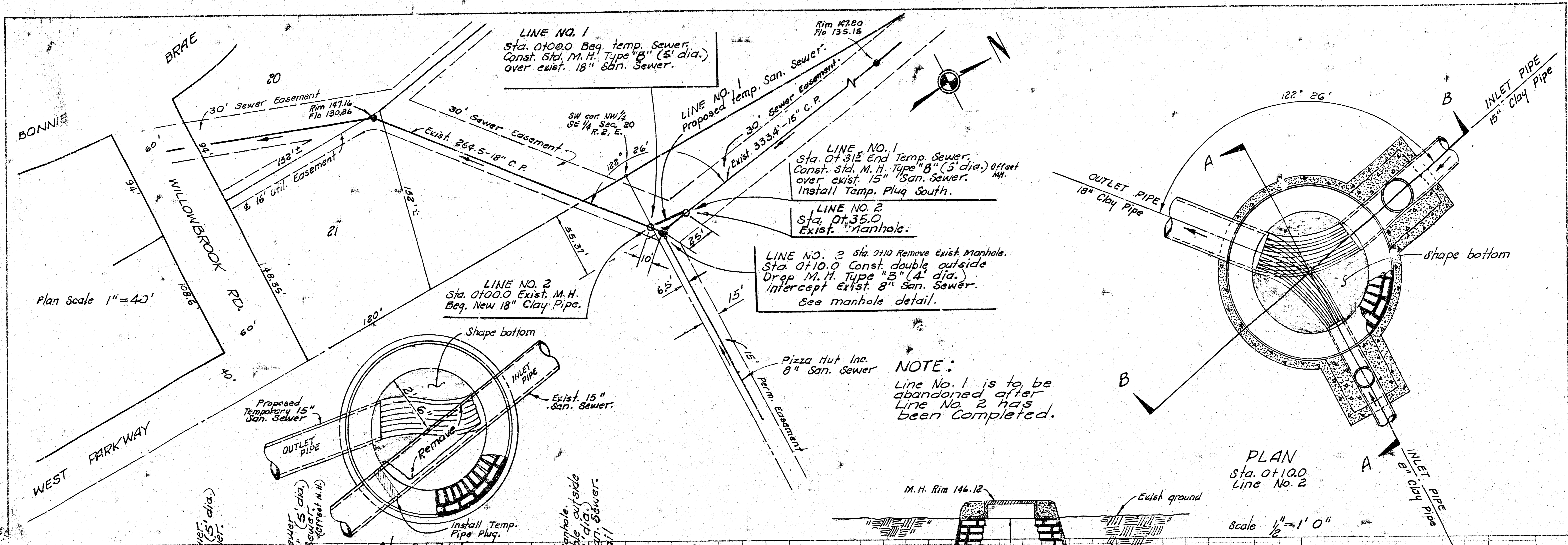
RECONSTRUCTION OF MANHOLES ON  
**THE WAR INDUSTRIES SEWER**  
NORTH OF WILLOWBROOK RD. AND EAST OF BONNIE BRAE  
CITY OF WICHITA, KANSAS  
R. W. LINN — CITY ENGINEER  
JUNE 1976 PROJECT NO. DBKJ 576029



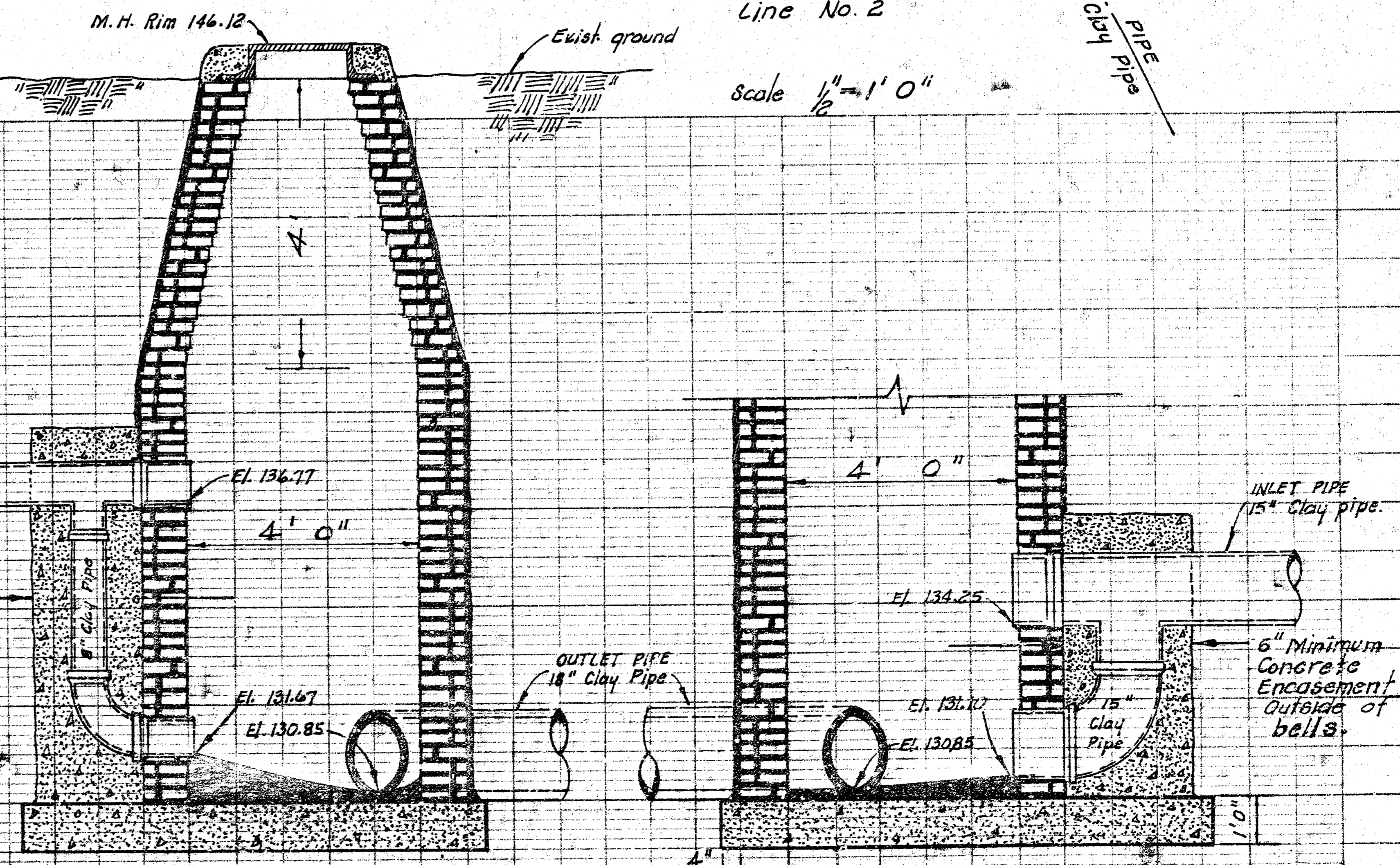
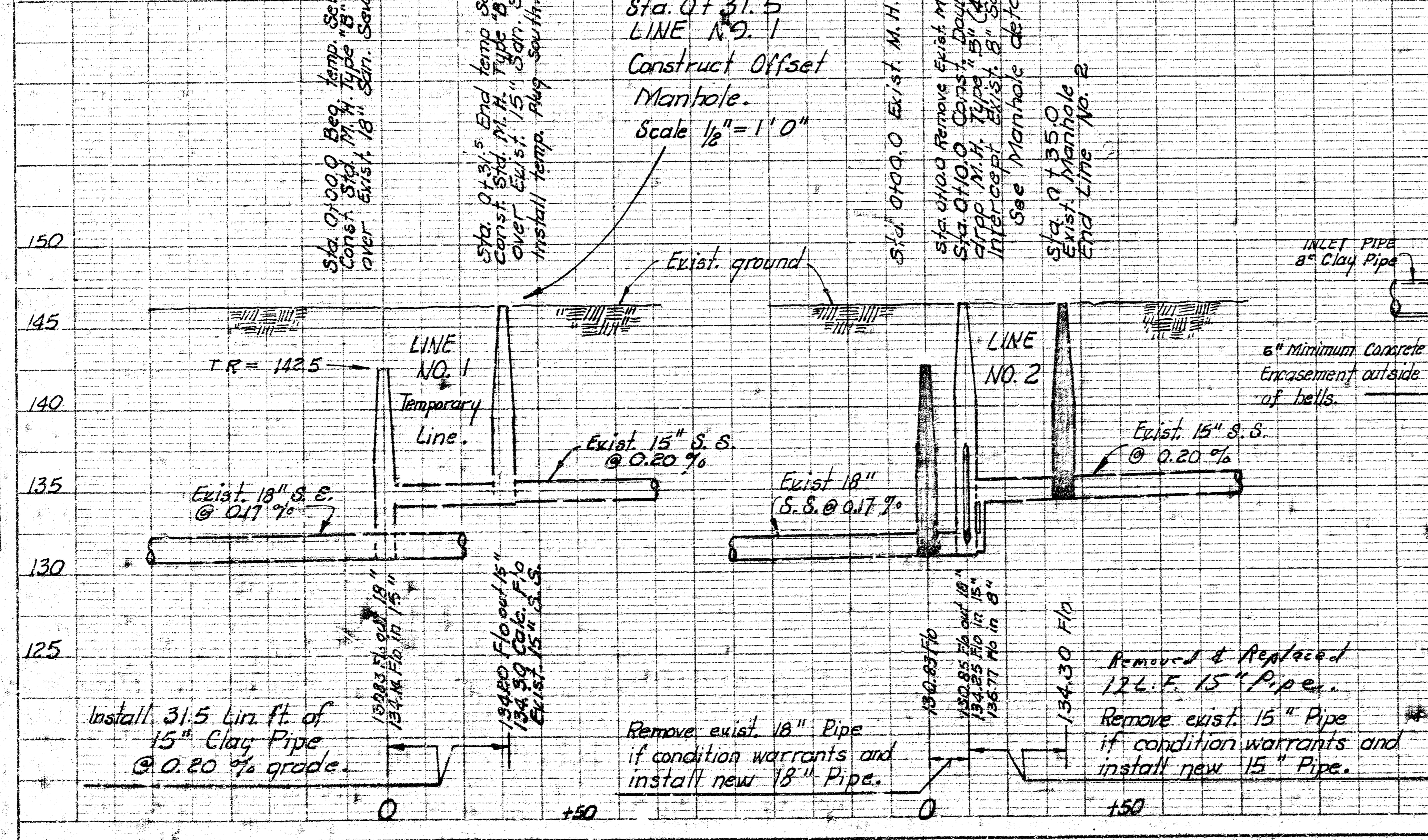
Scale 1/8" = 1' 0"

DATE	
BY	
CHECKED	
APPROVED	
SCALE	
PROJECT	
DESCRIPTION	
REVISIONS	

DATE	
BY	
CHECKED	
APPROVED	
SCALE	
PROJECT	
DESCRIPTION	
REVISIONS	



**NOTE:**  
Line No. 1 is to be abandoned after Line No. 2 has been completed.



**SECTION A-A**  
Sta. 01100 Line No. 2  
**DOUBLE OUTSIDE DROP MANHOLE**  
Type "B", 4' diameter  
Scale 1/4" = 1' 0"

**SECTION B-B**

RECONSTRUCTION OF MANHOLES ON  
THE WAR INDUSTRIES SEWER  
PROJECT NO. DBKJ 576029