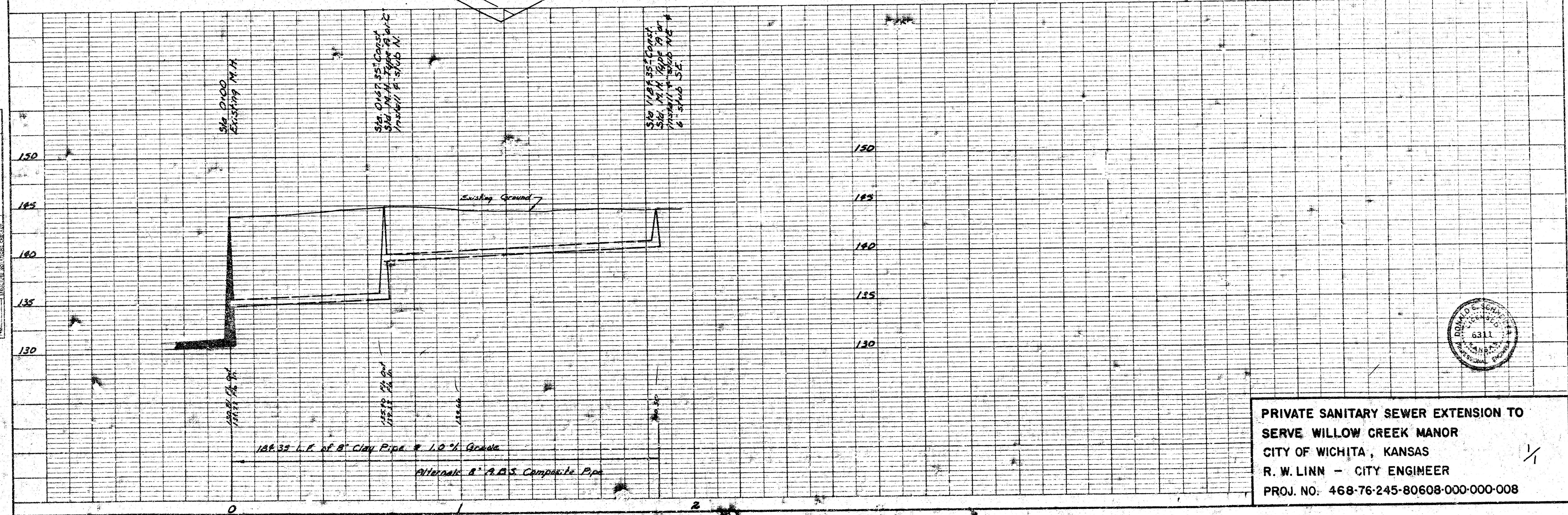
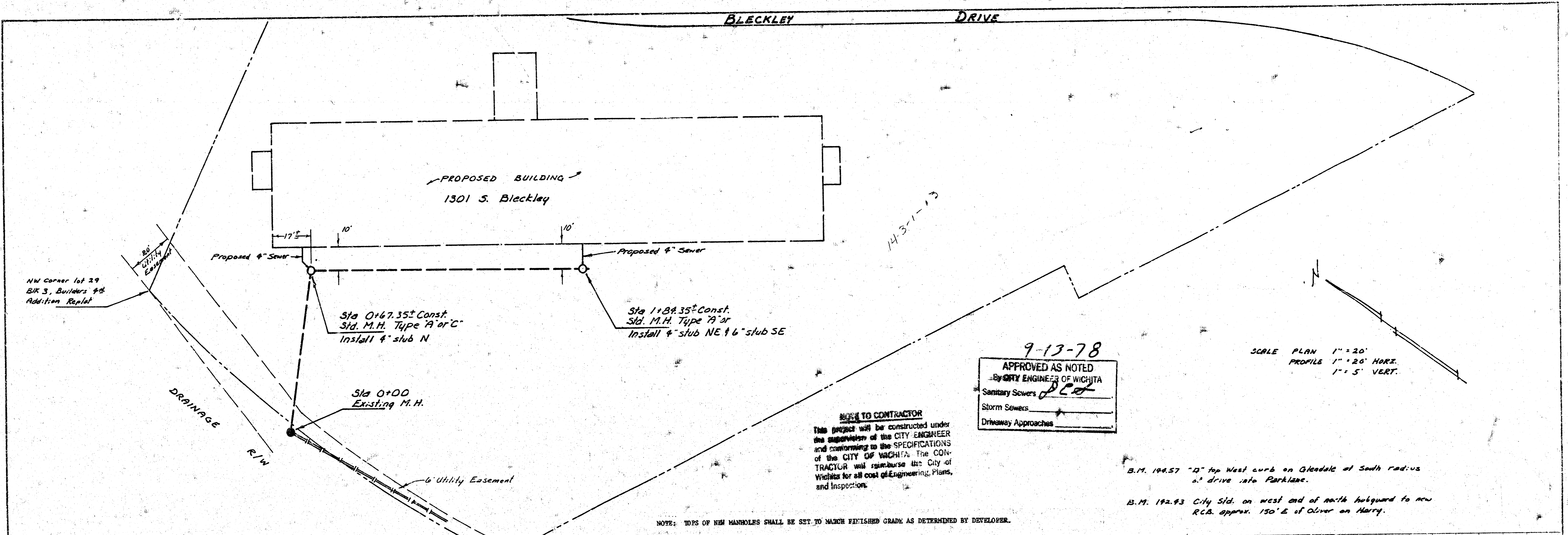


DATE	
PROJECT	Private Sanitary Sewer Extension
CLIENT	Willow Creek Manor
ENGINEER	R. W. Linn
CHECKED	
DATE	

DATE	
PROJECT	Private Sanitary Sewer Extension
CLIENT	Willow Creek Manor
ENGINEER	R. W. Linn
CHECKED	
DATE	



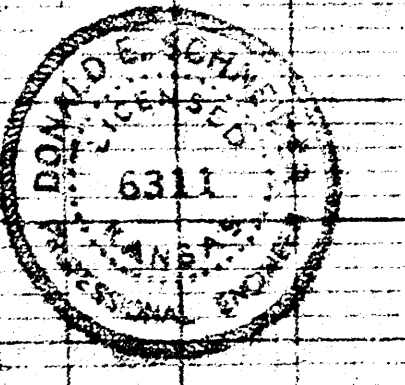
9-13-78
 APPROVED AS NOTED
 BY CITY ENGINEER OF WICHITA
 Sanitary Sewers
 Storm Sewers
 Driveway Approaches

NOTE TO CONTRACTOR
 This project will be constructed under the supervision of the CITY ENGINEER and conforming to the SPECIFICATIONS of the CITY OF WICHITA. The CONTRACTOR will reimburse the City of Wichita for all cost of Engineering, Plans, and Inspection.

NOTE: TOPS OF NEW MANHOLES SHALL BE SET TO MATCH FINISHED GRADE AS DETERMINED BY DEVELOPER.

SCALE PLAN 1" = 20'
 PROFILE 1" = 20' HORIZ.
 1" = 5' VERT.

B.M. 194.57 "D" top West curb on Gleendale at South radius
 6" drive into Parklasee.
 B.M. 192.93 City Sid. on west end of north highway to new
 R.C.B. approx. 150' E of Oliver on Harry.



PRIVATE SANITARY SEWER EXTENSION TO
 SERVE WILLOW CREEK MANOR
 CITY OF WICHITA, KANSAS
 R. W. LINN - CITY ENGINEER
 PROJ. NO. 468-76-245-80608-000-000-008