

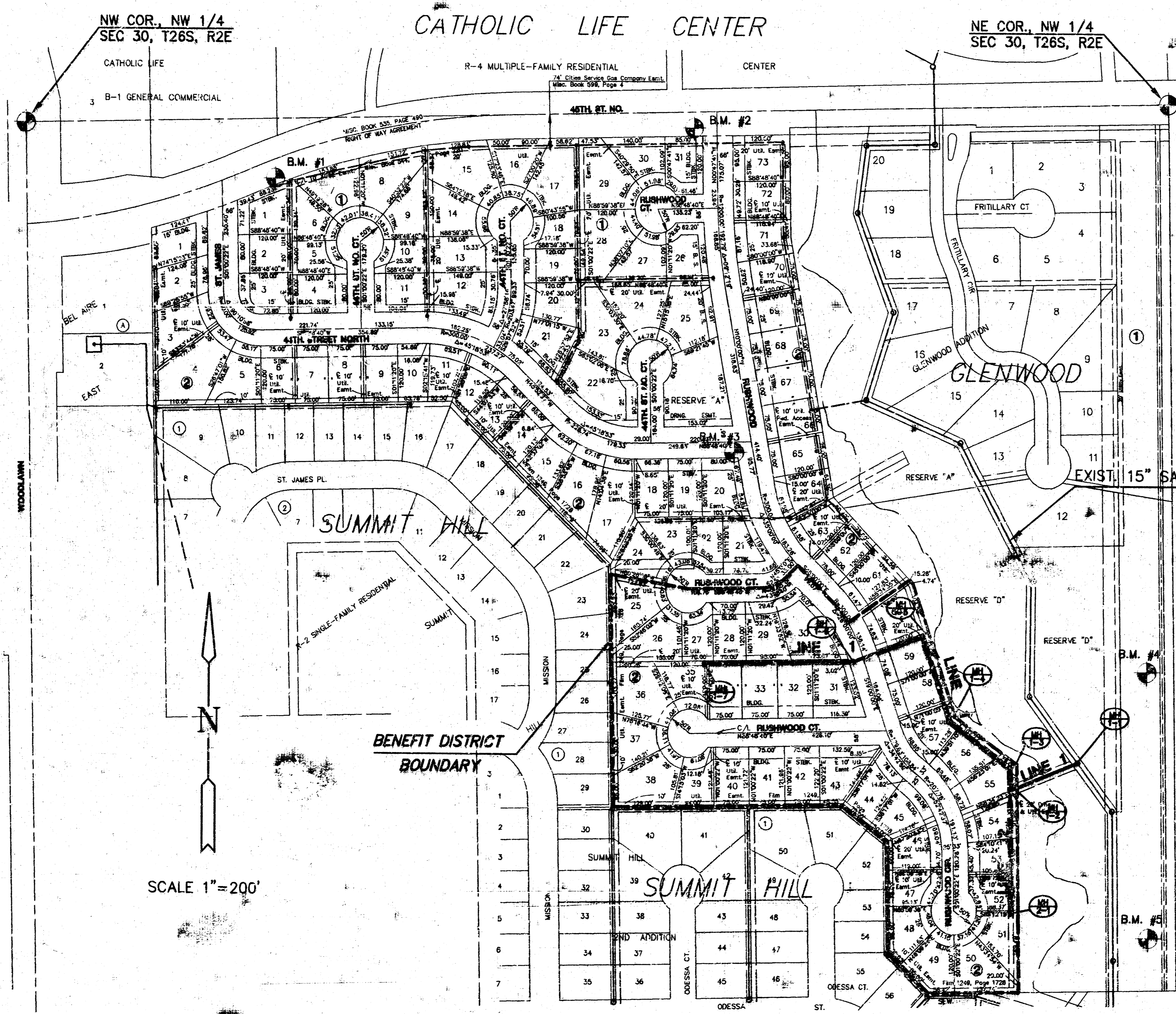
LOCATION MAP

**GENERAL NOTES**

1. THE CONTRACTOR SHALL BE RESPONSIBLE FOR PRESERVING PROPERTY IRONS. THE CONTRACTOR WILL BE REQUIRED TO RE-ESTABLISH ANY PROPERTY IRONS WHICH ARE DAMAGED OR DESTROYED BY HIS CONSTRUCTION OPERATIONS. SUCH IRONS SHALL BE RE-ESTABLISHED BY A LICENSED LAND SURVEYOR IN ACCORDANCE WITH STATE LAWS.
2. EXISTING UTILITIES AND THEIR LOCATIONS, AS SHOWN ON THE PLANS REPRESENT THE BEST INFORMATION OBTAINABLE FOR DESIGN. LOCATION INFORMATION HAS BEEN OBTAINED FROM THE VARIOUS UTILITY COMPANIES AND IS EITHER FROM COMPANY RECORD DRAWINGS OR COMPANY PROVIDED FIELD LOCATIONS. THE PLAN LOCATIONS SHOWN ARE NOT GUARANTEED. ADDITIONAL EXISTING UTILITIES MAY ALSO BE ENCOUNTERED.
3. CONTRACTOR WILL BE REQUIRED TO PROVIDE A MINIMUM ADVANCE NOTICE OF FORTY-EIGHT (48) HOURS TO UTILITY COMPANIES PRIOR TO STARTING ANY EXCAVATION AS FOLLOWS:  
  
 KANSAS ONE-CALL 1-800-344-7233  
 or 687-2470 (LOCAL WICHITA)  
  
 THE CONTRACTOR MUST NOTIFY THE FOLLOWING IN CASE OF AN EMERGENCY:  
 SOUTHWESTERN BELL TELEPHONE COMPANY 1-800-734-7590  
 CABLEVISION 263-2061  
 K&E (GAS & ELECTRIC) 383-8600  
 CITY OF WICHITA WATER & SEWER MAINTENANCE 268-4908  
 ARKLA GAS COMPANY 946-0096  
 CITY OF BEL AIRE (Terry Drilling) 744-2451
4. RUBBLE FROM THE REMOVAL OF MISCELLANEOUS STRUCTURES AND EXCESS EXCAVATION WHICH IS TO BE WASTED SHALL BE DISPOSED OF ON SITES TO BE PROVIDED BY THE CONTRACTOR. THESE SITES SHALL BE APPROVED BY THE ENGINEER AS TO SUITABILITY, APPEARANCE AND SITE LOCATION. LOCATIONS THAT, IN THE OPINION OF THE ENGINEER, WILL LEAVE AN UNSIGHTLY APPEARANCE WILL NOT BE APPROVED. ALL DISPOSAL SITES MUST BE APPROVED BY THE KANSAS DEPARTMENT OF HEALTH AND ENVIRONMENT. MATERIAL EITHER STOCKPILED OR DISPOSED OF IN A FLOOD PLAIN WOULD REQUIRE A KANSAS STATE BOARD OF AGRICULTURE PERMIT. ANY MATERIAL DUMPED IN WATERS OF THE UNITED STATES OR WETLANDS IS SUBJECT TO U.S. CORPS OF ENGINEERS PERMITTING REGULATIONS. ANY MATERIAL BURIED OR STOCKPILED BEYOND APPROVED CONSTRUCTION LIMITS WOULD REQUIRE ADDITIONAL ARCHAEOLOGICAL INVESTIGATIONS UNLESS BURIED IN A PREVIOUSLY APPROVED BORROW LOCATION.
5. COST OF EXCAVATION, HAULING, AND DUMPING OF EXCESS EXCAVATION SHALL BE SUBSIDIARY TO THE PROJECT.
6. A PORTION OF EXCESS EXCAVATED MATERIAL SHALL BE MOUNDDED AROUND MANHOLES WHICH EXTEND MORE THAN ONE (1) FOOT ABOVE THE EXISTING GROUND. SUCH MOUNDS SHALL BE CONSTRUCTED WITH A SIX (6) FOOT DIAMETER FLAT TOP WITH 4 TO 1 SIDE SLOPES DOWN TO THE ORIGINAL GROUND. THE ELEVATION OF THE FLAT TOP OF THE MOUND SHALL BE 0.4 FOOT BELOW THE TOP OF THE MANHOLE.
7. ALL STUBS AND PLUGGED PIPES SHALL BE LOCATED WITH GREEN PLASTIC TAPE IN THE SAME MANNER AS RISERS.
8. PRIOR TO LAYING SEWER LINES USING EXISTING STUBS IN EXISTING MANHOLES, THE CONTRACTOR SHALL EXPOSE AND VERIFY THE ELEVATION, GRADE AND ALIGNMENT OF EXISTING STUBS AND NOTIFY THE ENGINEER OF ANY DEVIATION FROM THE PLAN. WHERE CONNECTION TO AN EXISTING MANHOLE THAT DOES NOT HAVE AN EXISTING STUB OR THE STUB IS UNSUITABLE DUE TO ELEVATION OF GRADE OR ALIGNMENT, THE CONTRACTOR SHALL RESHAPE THE EXISTING MANHOLE INVERT TO PROVIDE SMOOTH FLOW. THE COST OF RESHAPING EXISTING MANHOLE INVERTS IS INCIDENTAL TO THE PROJECT.
9. TREES AND SHRUBS IN PUBLIC RIGHT-OF-WAY WHICH ARE IN DIRECT CONFLICT WITH PROPOSED NEW CONSTRUCTION SHALL BE REMOVED BY THE CONTRACTOR WITH THE ENGINEER'S APPROVAL. TREES AND SHRUBS WHICH ARE NOT IN DIRECT CONFLICT WITH PROPOSED NEW CONSTRUCTION SHALL BE SAVED AND PROTECTED FROM DAMAGE.
10. ALL DISTURBED AREAS TO BE SEEDDED WITH RYE GRASS AT A RATE OF 200 LBS./ACRE WITHIN 10 DAYS OF CONSTRUCTION. CONTRACTOR TO PREPARE GROUND PER CITY SPEC. COST IS SUBSIDIARY TO SITE PREPARATION AND RESTORATION.

**SANITARY SEWER PLANS FOR  
WILLOW CREEK ADDITION  
PHASE 2**

AN ADDITION TO  
CITY OF BEL AIRE  
SEDGWICK COUNTY, KANSAS  
MAY 1998



SCALE 1" = 200'

Booked  
1-26-99  
P-61  
RDL

AS BUILT: 12/10/98  
REVISED: 12/10/98



REVISED: 5-13-98

APPROVED AS NOTED  
BY CITY ENGINEER OF WICHITA

SANITARY SEWERS \_\_\_\_\_  
 STORM SEWERS \_\_\_\_\_  
 DRIVEWAY APPROACHED \_\_\_\_\_  
 WATER MAINS \_\_\_\_\_  
 PAVING \_\_\_\_\_

793PPS

NOTE TO CONTRACTOR  
 INSPECTION AND TESTING FOR THIS PROJECT IS TO BE PROVIDED BY A LICENSED CONSULTING ENGINEERING FIRM UNDER CONTRACT WITH THE OWNER/DEVELOPER. SAID INSPECTION TO BE IN ACCORDANCE WITH THE CITY OF WICHITA STANDARD CONSTRUCTION ENGINEERING PRACTICES AND CERTIFIED BY A LICENSED PROFESSIONAL ENGINEER. NO WORK SHALL BE PERFORMED IN DEDICATED EASEMENTS OR THE PUBLIC RIGHT-OF-WAY BY THE CONTRACTOR WITHOUT SUCH INSPECTION NOR SHALL ANY WORK BE CONSIDERED IN DEDICATED EASEMENTS OR PUBLIC RIGHT-OF-WAY WITHOUT WRITTEN AUTHORIZATION BY THE CITY ENGINEER.

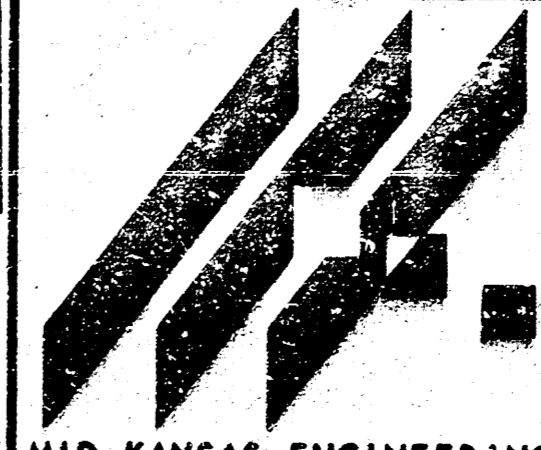
**INDEX TO DRAWINGS**

SHEET NO.	DESCRIPTION
1	TITLE SHEET
2	LINE 1
3	LINE 2
4-5	MANHOLE DETAILS
6	FINAL PLAT

**BENCHMARKS**

- B.M. #1 B.M. R.R. SPIKE IN N. FACE P.P., 548± EAST OF N.W. COR. 30-26S-2E ON S. SIDE 45TH ST. NORTH. ELEV. = 1405.22
- B.M. #2 "C" CUT ON S.W. COR. OF AREA DITCH INLET 30' S. & 54' W. OF E. 45TH & RUSHWOOD. ELEV. = 1382.71
- B.M. #3 "C" CUT ON TOP OF S. CURB 44TH ST. ± 40' W. OF E. RUSHWOOD. ELEV. = 1381.24
- B.M. #4 RR SPIKE IN THE W. FACE OF 2ND "H" POLE S. OF 45TH ST. NORTH. (ELEV. = 1378.46)
- B.M. #5 RR SPIKE IN THE W. FACE OF 3RD "H" POLE S. OF 45TH ST. NORTH. (ELEV. = 1373.12)

CITY OF WICHITA  
PRIVATE PROJECT NO. 793PPS (607861)



MID-KANSAS ENGINEERING CONSULTANTS, INC.  
411 N. WEBB ROAD  
WICHITA, KS. 67206  
316-684-9600

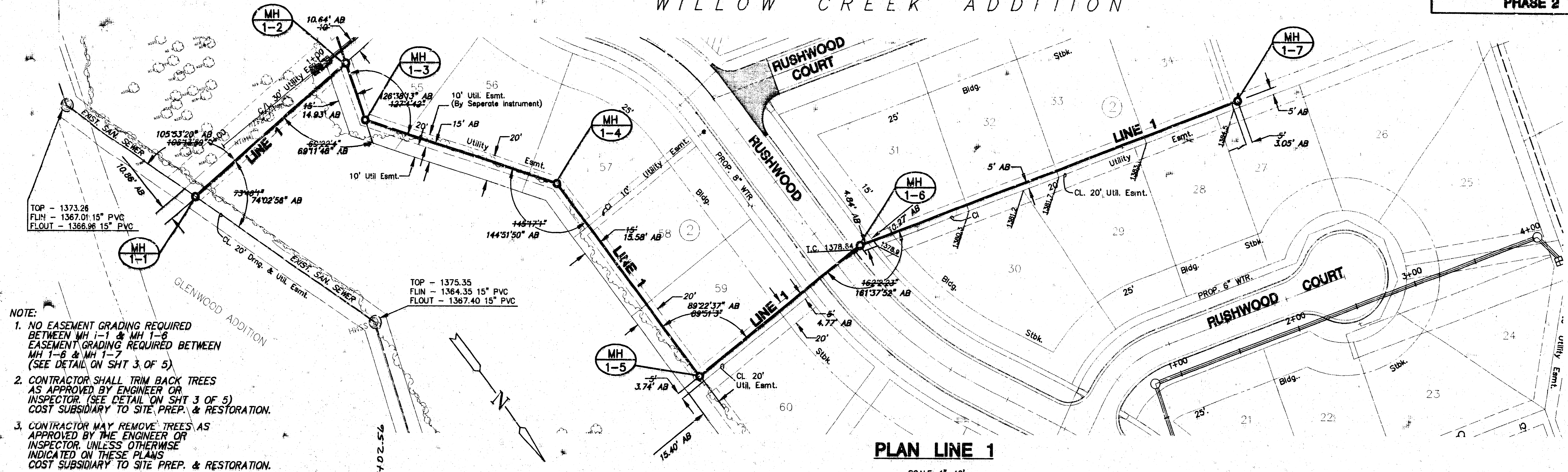
WILLOW CREEK ADDITION - PHASE 2  
PROJECT NAME

SANITARY SEWER PLANS  
SHEET TITLE

GJA	DP/AN	GJA/JTC
DESIGN BY:	DRAWN BY:	CHECKED BY:
MAY 1998	88045_BT	1 / 6
DATE	JOB NO.	SHEET/OF

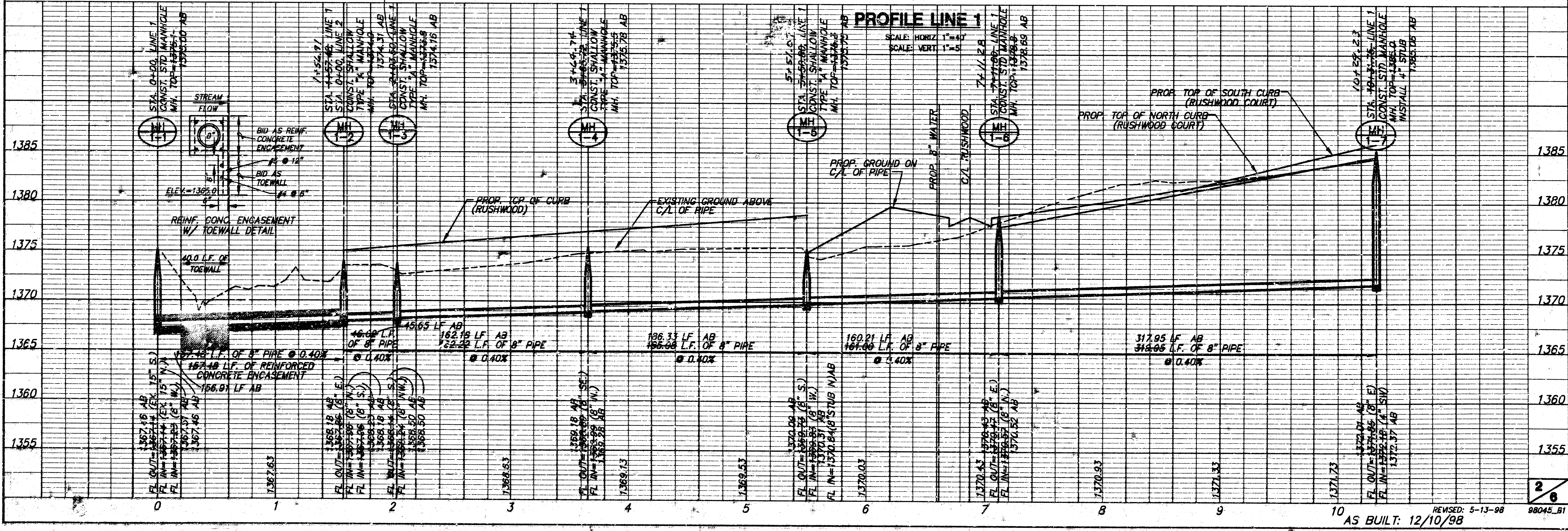
**WILLOW CREEK ADDITION  
SANITARY SEWER PLANS  
PHASE 2**

**WILLOW CREEK ADDITION**

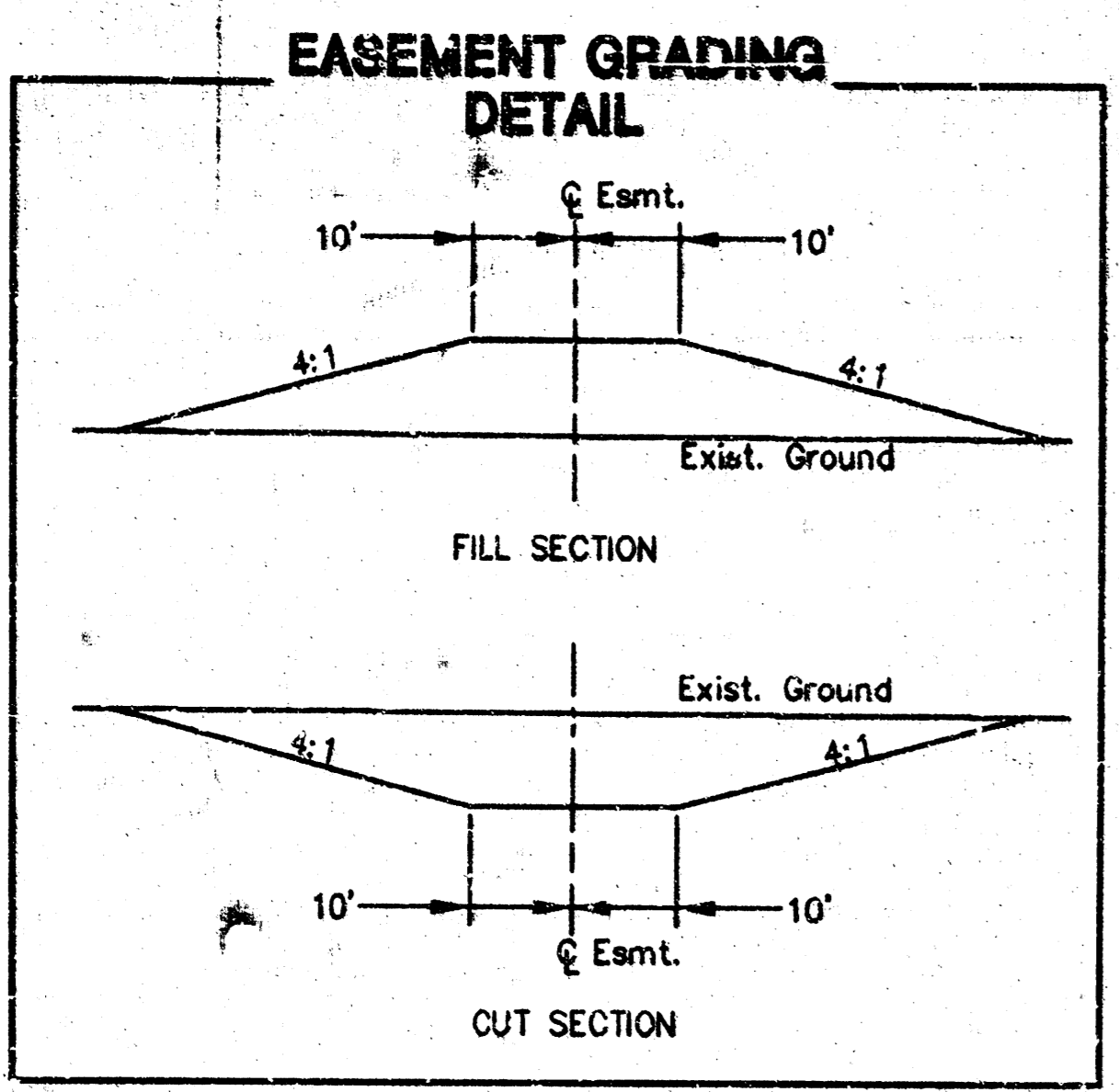


**PLAN LINE 1**

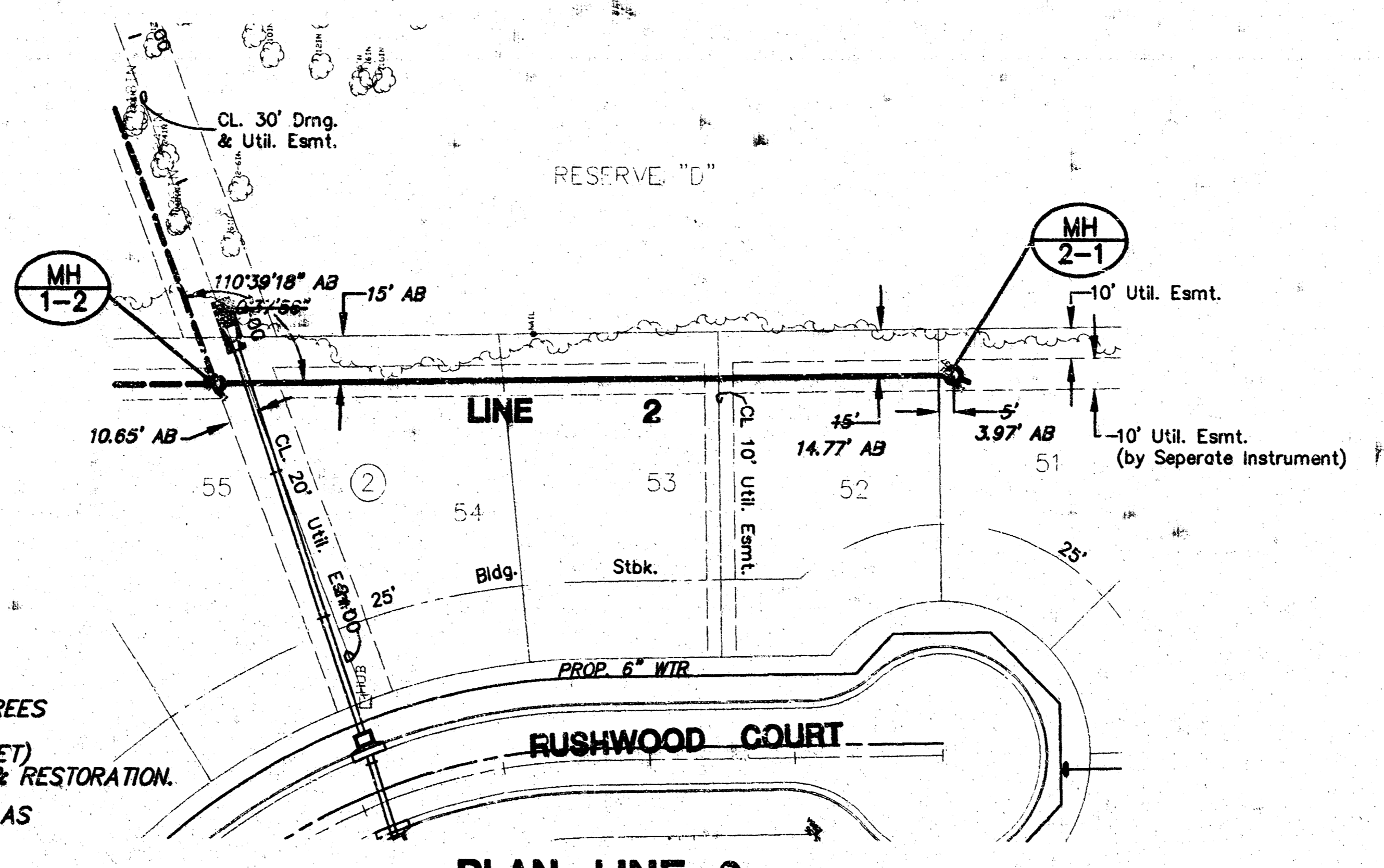
SCALE: 1"=40'



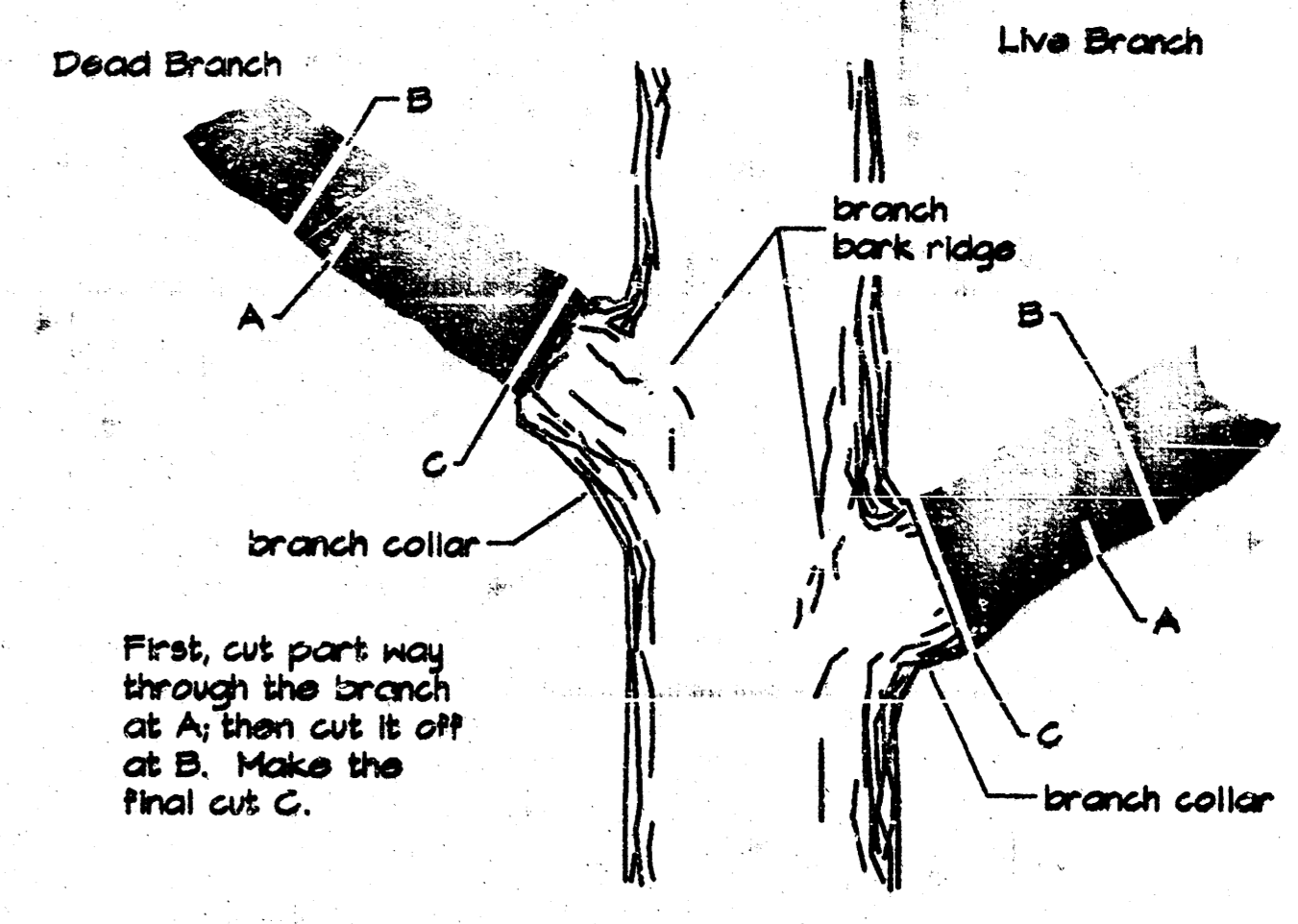
**WILLOW CREEK ADDITION  
SANITARY SEWER PLANS  
PHASE 2**



**GLENWOOD ADDITION**



- NOTE:**
1. NO EASEMENT GRADING REQUIRED
  2. CONTRACTOR SHALL TRIM BACK TREES AS APPROVED BY ENGINEER OR INSPECTOR. (SEE DETAIL THIS SHEET) COST SUBSIDIARY TO SITE PREP. & RESTORATION.
  3. CONTRACTOR MAY REMOVE TREES AS APPROVED BY THE ENGINEER OR INSPECTOR, UNLESS OTHERWISE INDICATED ON THESE PLANS. COST SUBSIDIARY TO SITE PREP. & RESTORATION.



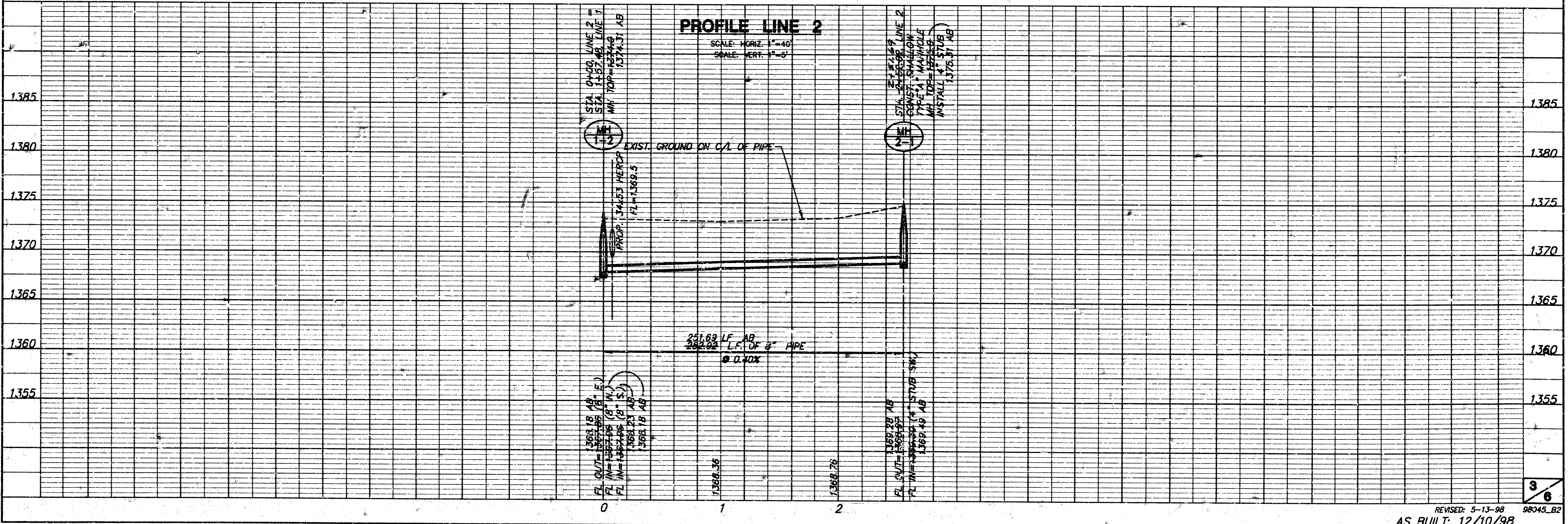
First, cut part way through the branch at A; then cut it off at B. Make the final cut C.

**TREE TRIMMING DETAIL**  
NOT TO SCALE

- NOTES**
1. TREES/SHRUBS ARE AN IMPORTANT ASSET TO THIS DEVELOPMENT. ONLY TREES/SHRUBS WITH TRUNKS LYING WITHIN THE ALIGNMENT AREA MAY BE REMOVED. EVERY EFFORT SHALL BE MADE TO SAVE ALL OTHERS.
  2. EQUIPMENT AND CONSTRUCTION MATERIALS SHALL REMAIN OUT OF AND AWAY FROM TREE DRUPLINES WHEREVER POSSIBLE SO AS TO NOT COMPACT THE ROOT ZONE OR DAMAGE THE TREE.
  3. CONTRACTOR SHALL COORDINATE WITH INSPECTOR AND ENGINEER ON THE REMOVAL OF TREES/SHRUBS ALIGNMENT PATH. NO TREES/SHRUBS SHALL BE REMOVED PRIOR TO A MEETING ON SITE WITH INSPECTOR AND ENGINEER.
  4. TREES AND SHRUBS REMOVAL & TRIMMING TO BE SUBSIDIARY TO SITE PREP. & RESTORATION.

**PLAN LINE 2**  
SCALE: 1"=40'

**PROFILE LINE 2**



1. VECTURE (8045) SAN 98045\_B2.DWG P1 D01 11.12.98 52 1998





