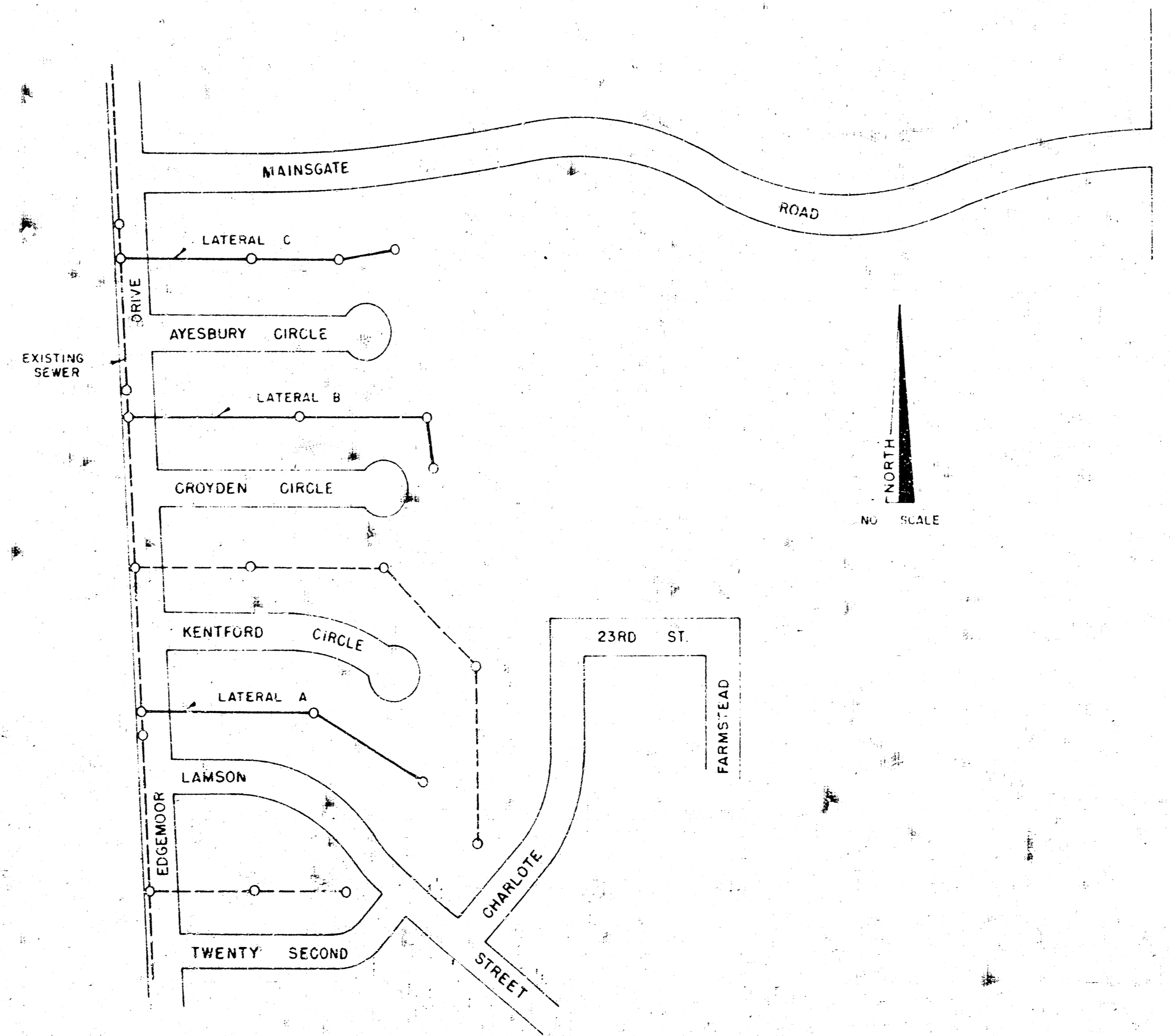


PLANS

SANITARY SEWER EXTENSIONS

PROJECT NO. DBKW 707022

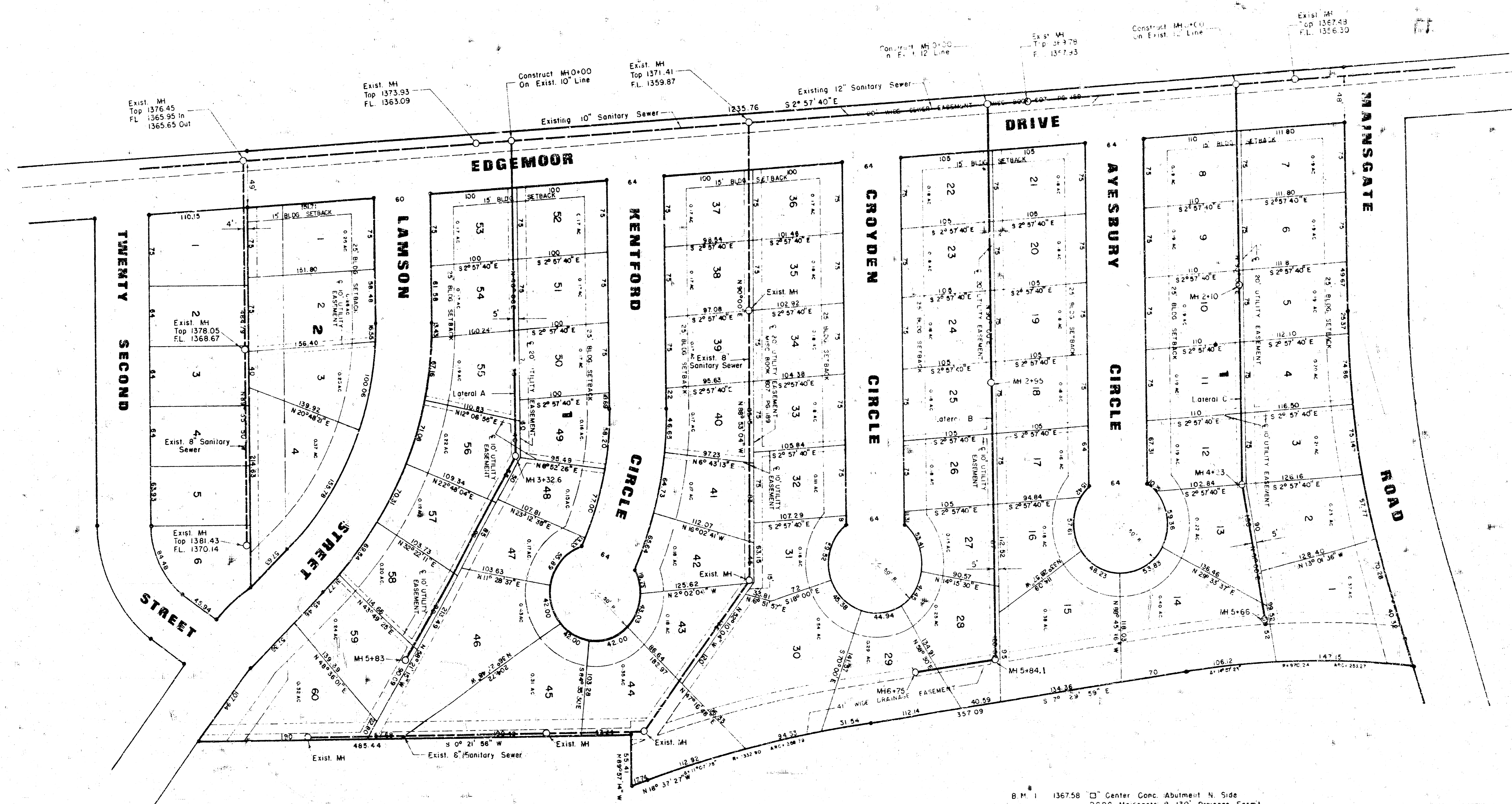
WOODLAWN PLACE 3rd ADDITION



REISS AND GOODNESS ENGINEERS

REISS & GOODNESS ENGINEERS
3140 WEST 21ST STREET
WICHITA, KANSAS 67204
(316) 632-6233

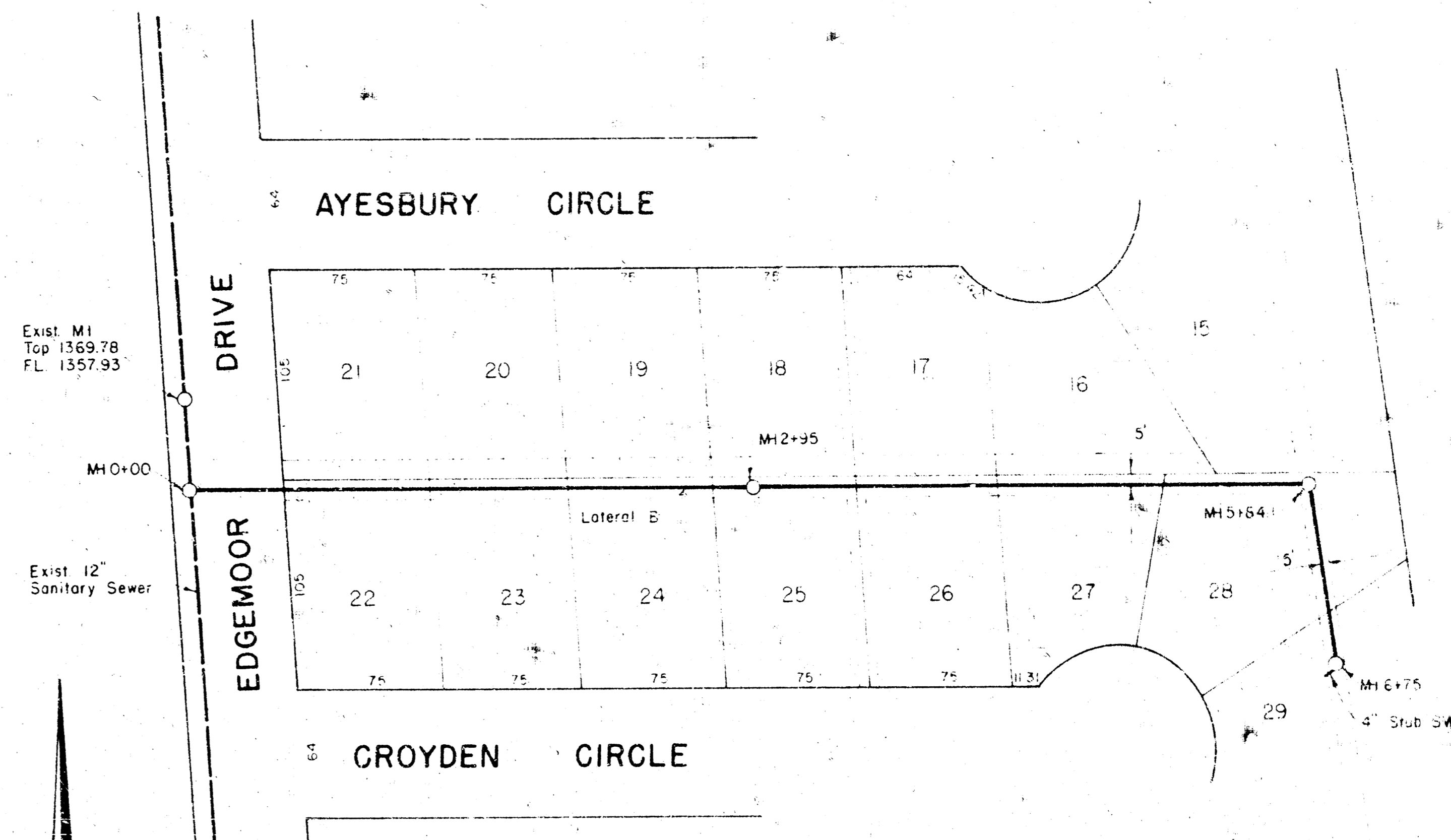
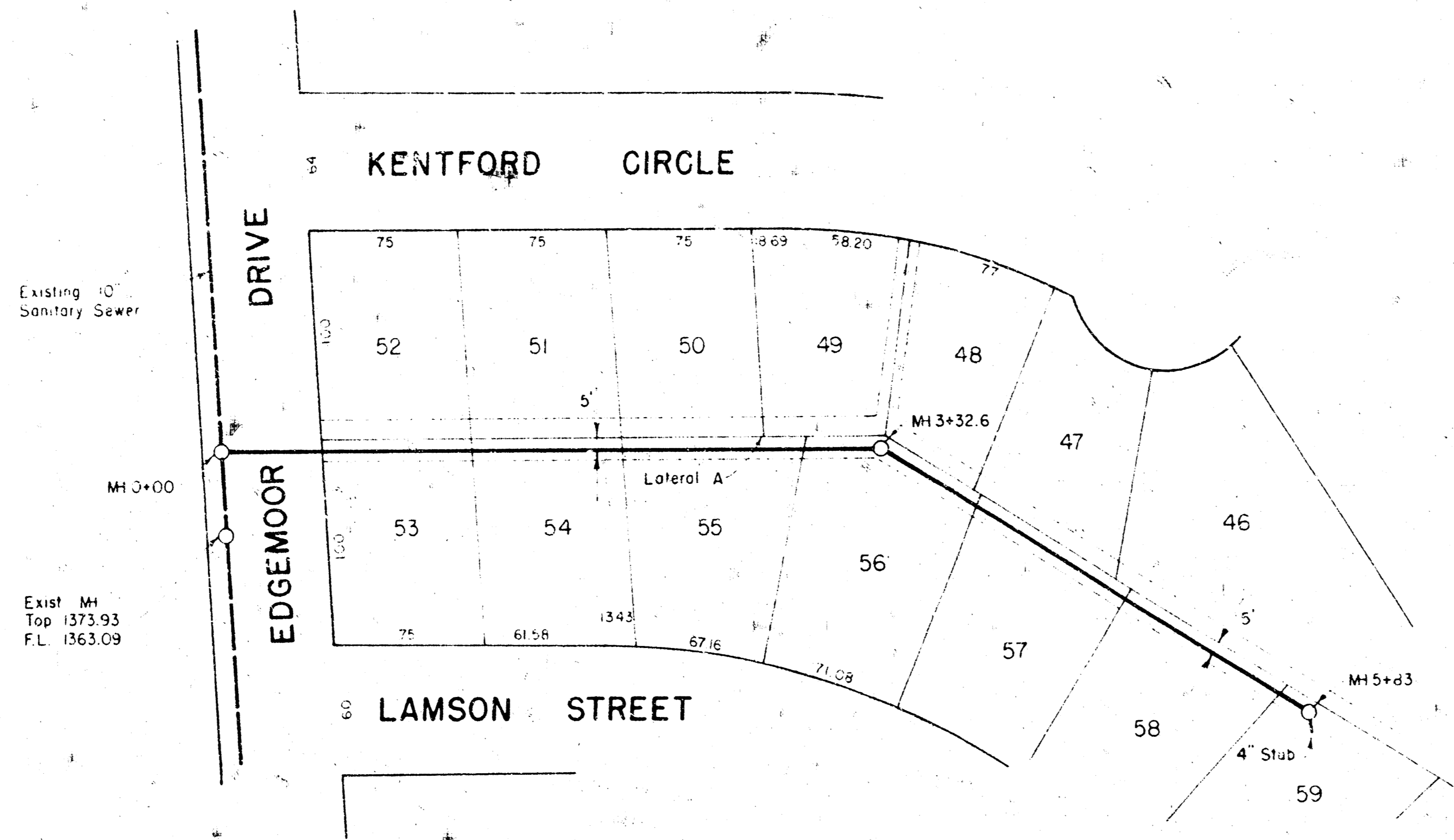
NORTH
Scale 1" = 60'



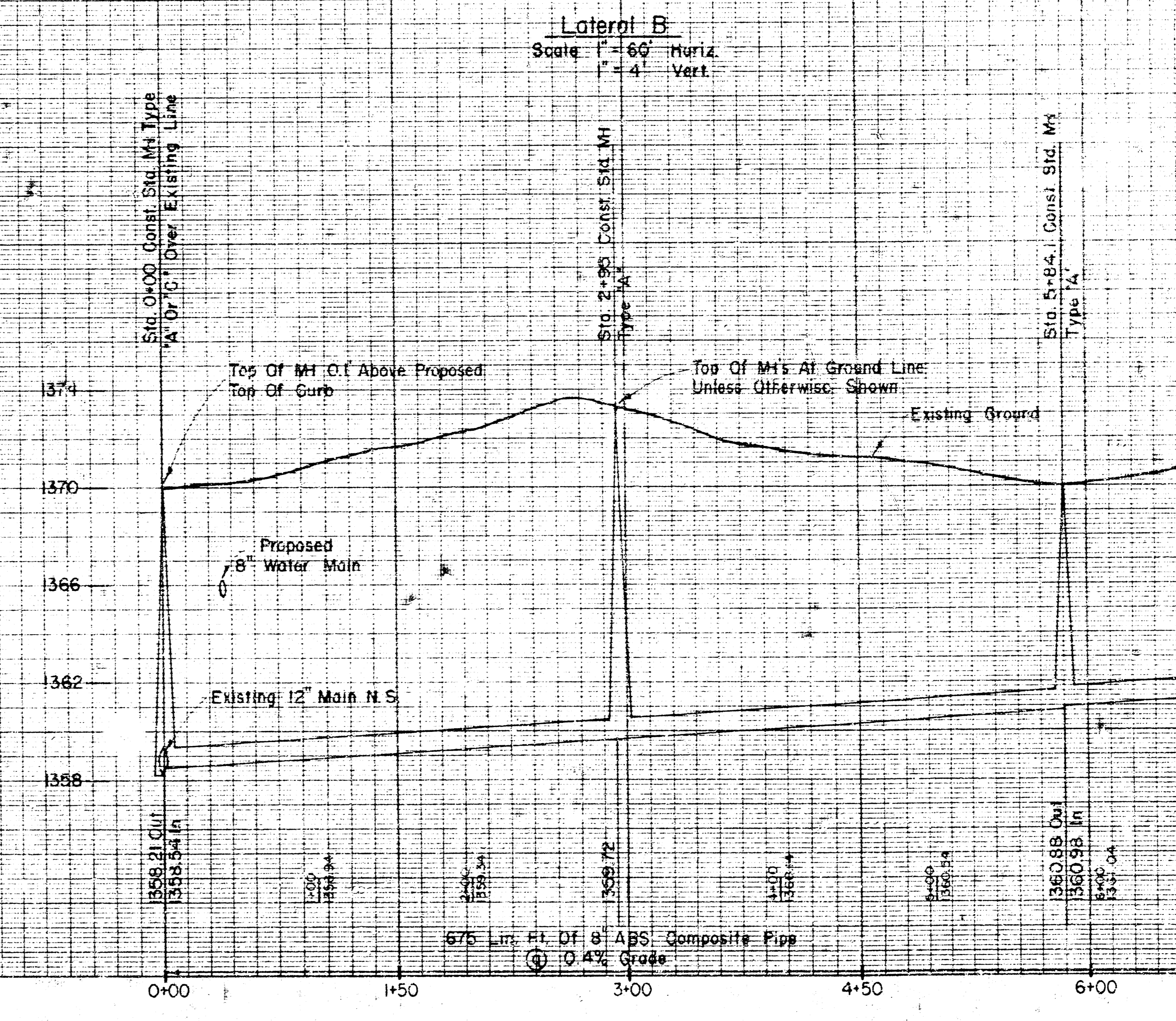
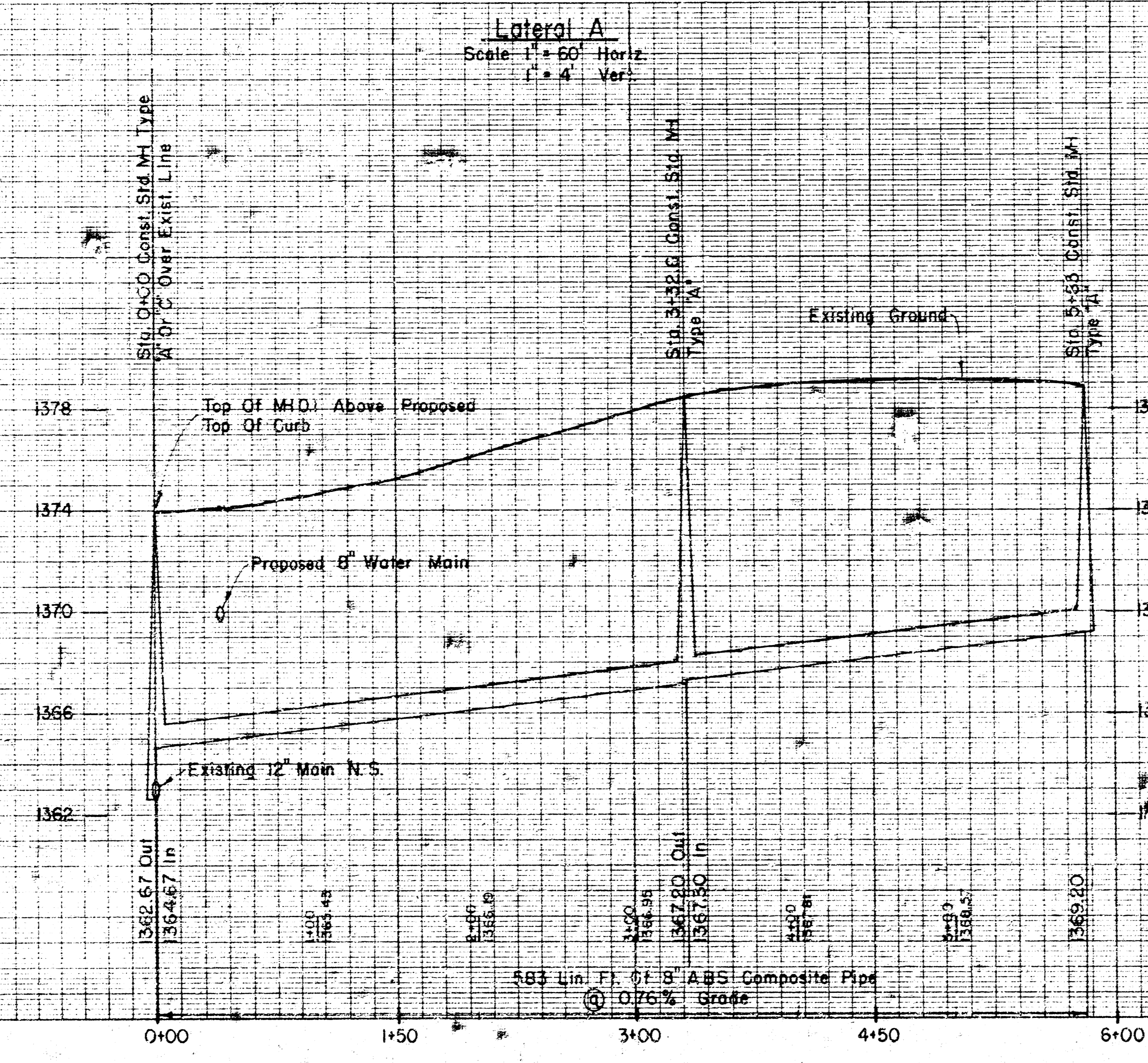
B.M. 1 1367.58 □ Center Conc. Abutment N. Side
R.C.B.C. Mainsgate @ 130' Drainage Easmt

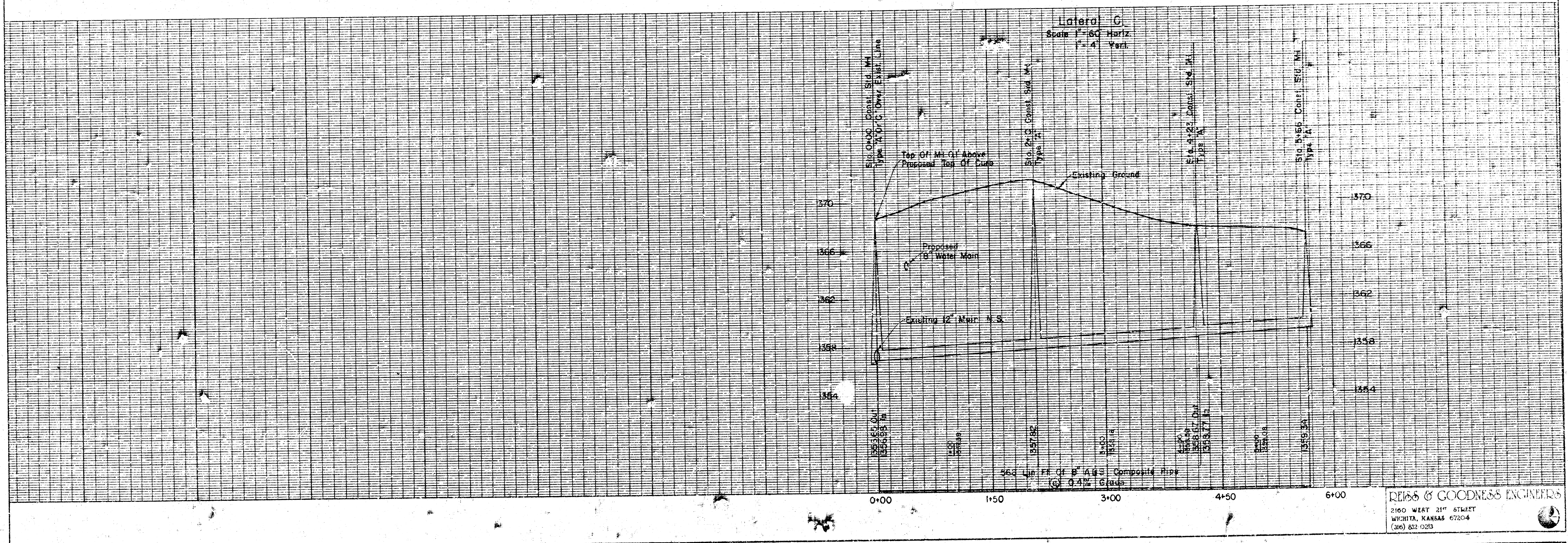
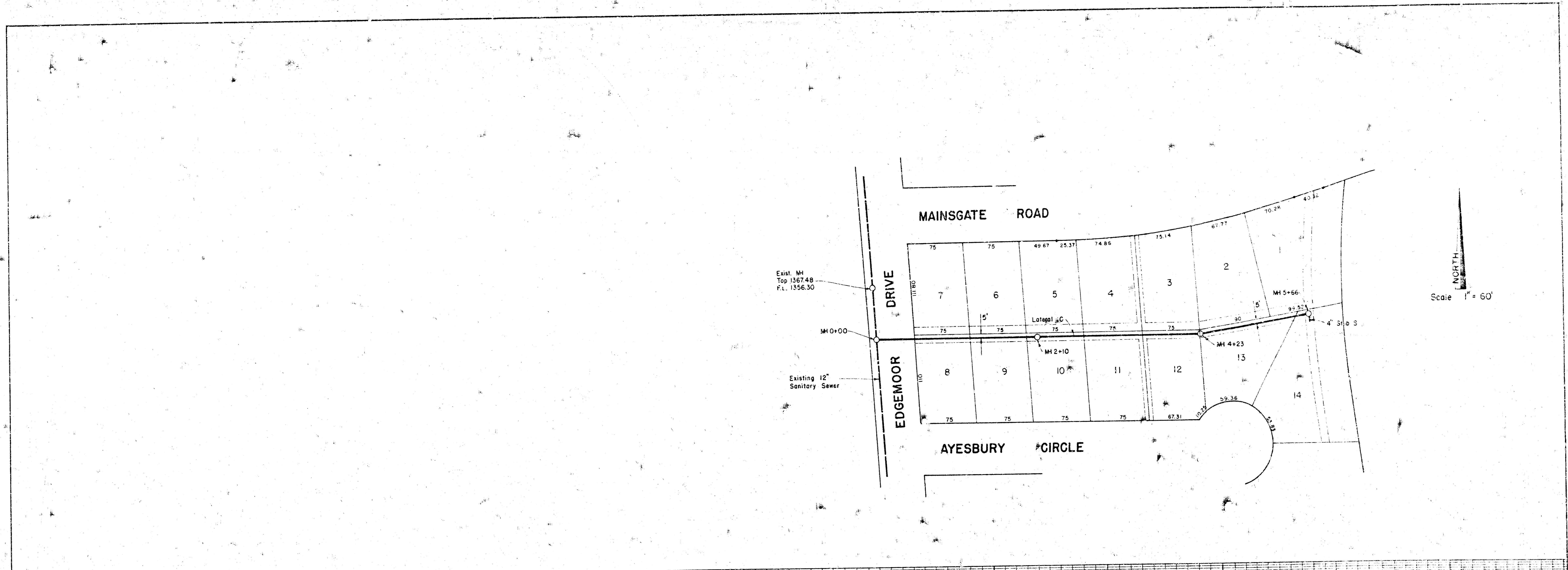
B.M. 2 1363.43 Top of Top Flange Bolt Mueller
Fire Hydrant At Mainsgate @ Edgemoor

REISS & GOODNESS ENGINEERS
2160 WEST 21ST STREET
WICHITA, KANSAS 67204
(316) 633-6200



NORTH
Scale 1" = 60'





REISS & GOODNESS ENGINEERS
 2100 WEST 21ST STREET
 WICHITA, KANSAS 67204
 (316) 832-0235