

Fig. 1620

Elev. 146.00

Elev. 141.0

Elev. 139.75

Elev. 138.91

CONCRETE SLAB
 3/8" Re-bars @ 18" c/c both ways
 SETTING CROSS SECTION



APPROVE BY _____ CITY ENG.
 APPROVED BY _____ STATE BOARD OF HEALTH

patents pending

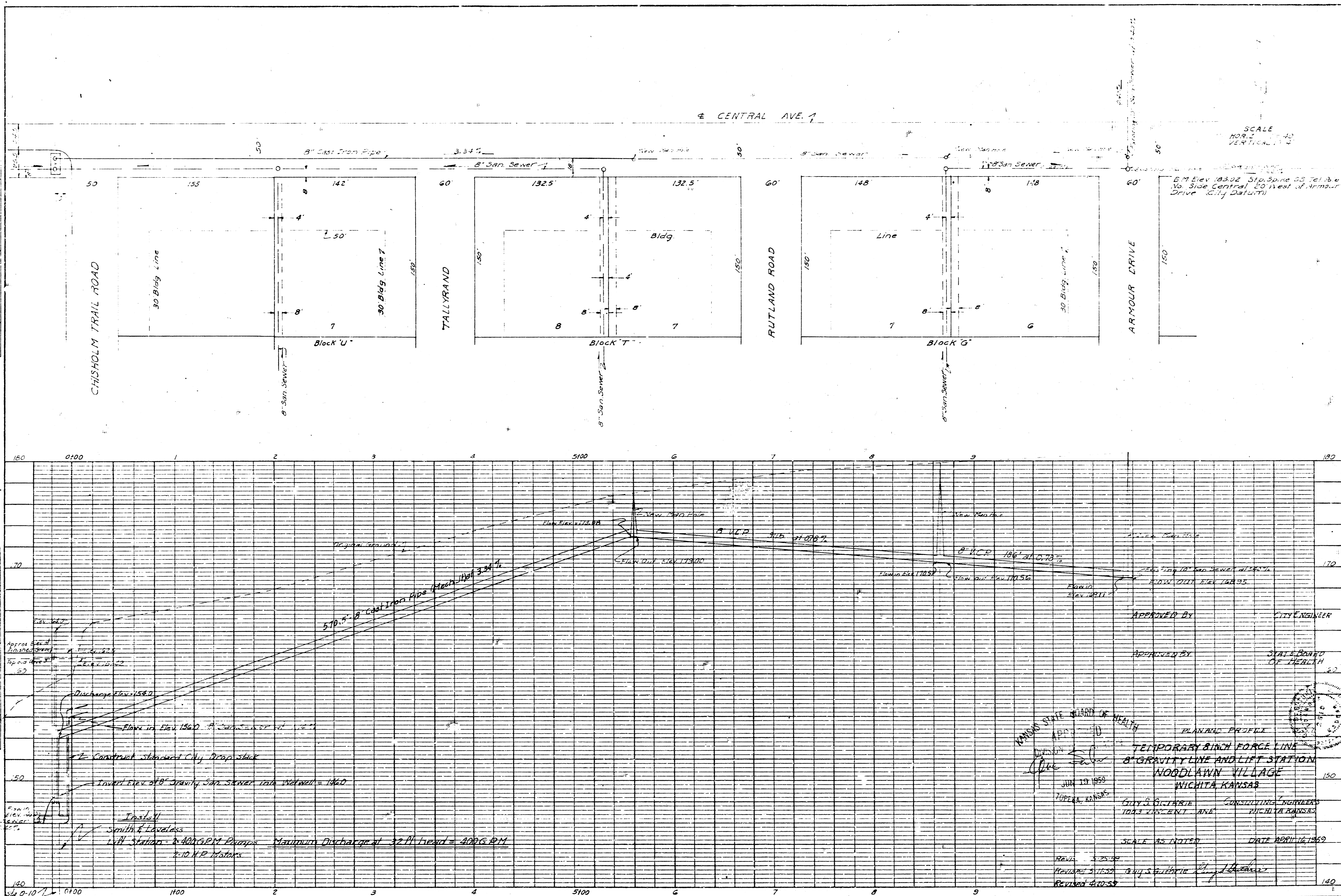
PLAN & ELEVATION OF LIFT STATION & WET WELL
 WOODLAWN VILLAGE, WILMOTA, ARKANSAS.

GUY S. GUTHRIE CONSULTING ENGINEERS
 Guy S. Guthrie
 Revised 4-22-53

APR 16 1953

PLAN
 SHEET NO. 10
 NOTE BOOK NO. 10
 DATE 4/16/69

PROFILE
 SHEET NO. 10
 NOTE BOOK NO. 10
 DATE 4/16/69

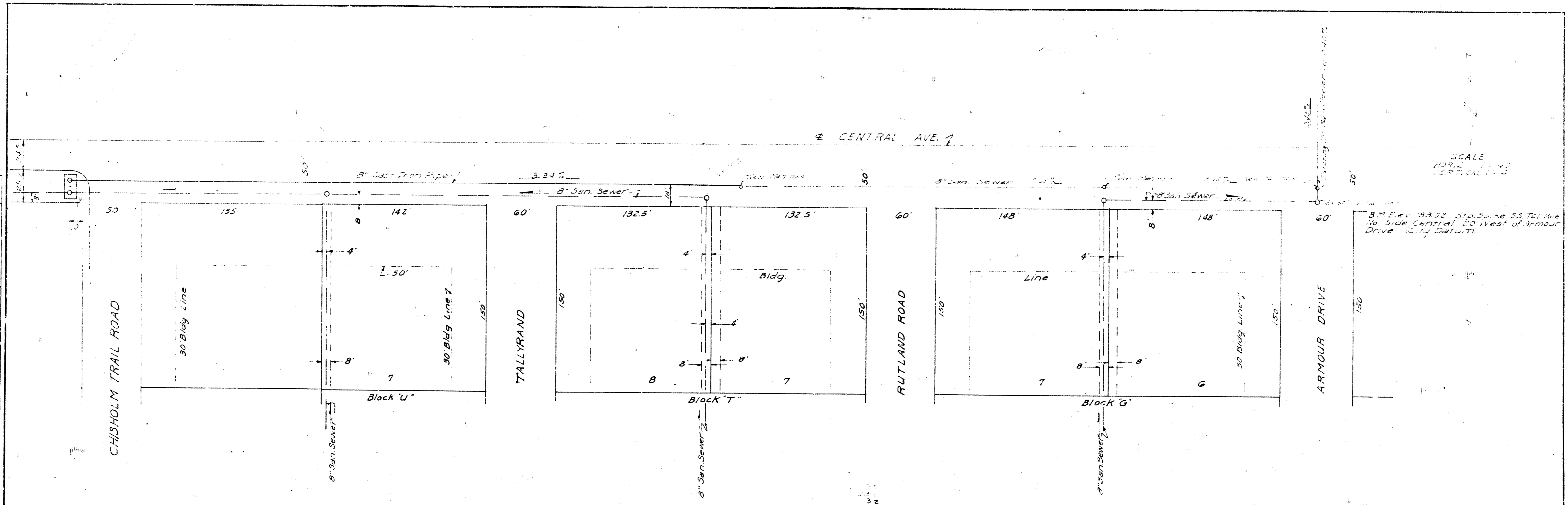


SCALE
 HORIZ. 1" = 40'
 VERTIC. 1" = 10'
 B.M. Elev. 183.02 Sta. 5+96.35
 30' Side Central 20' West of Armour Drive City of Wichita

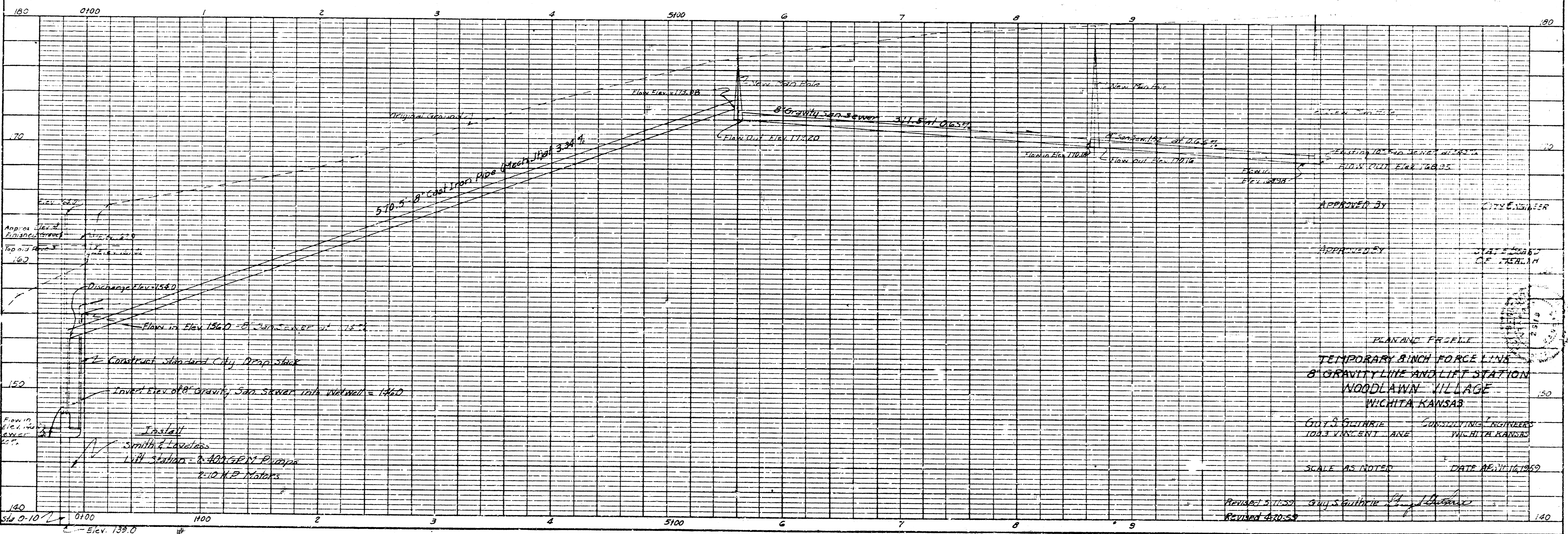
APPROVED BY
 CITY ENGINEER
 STATE BOARD OF HEALTH

PLANNED PROFILE
 TEMPORARY BUNCH FORCE LINE
 8" GRAVITY LINE AND LIFT STATION
 WOODLAWN VILLAGE
 WICHITA, KANSAS
 JULY 9, 1968
 CONSULTING ENGINEERS
 MICHAEL ROSSER
 DATE APRIL 16, 1969

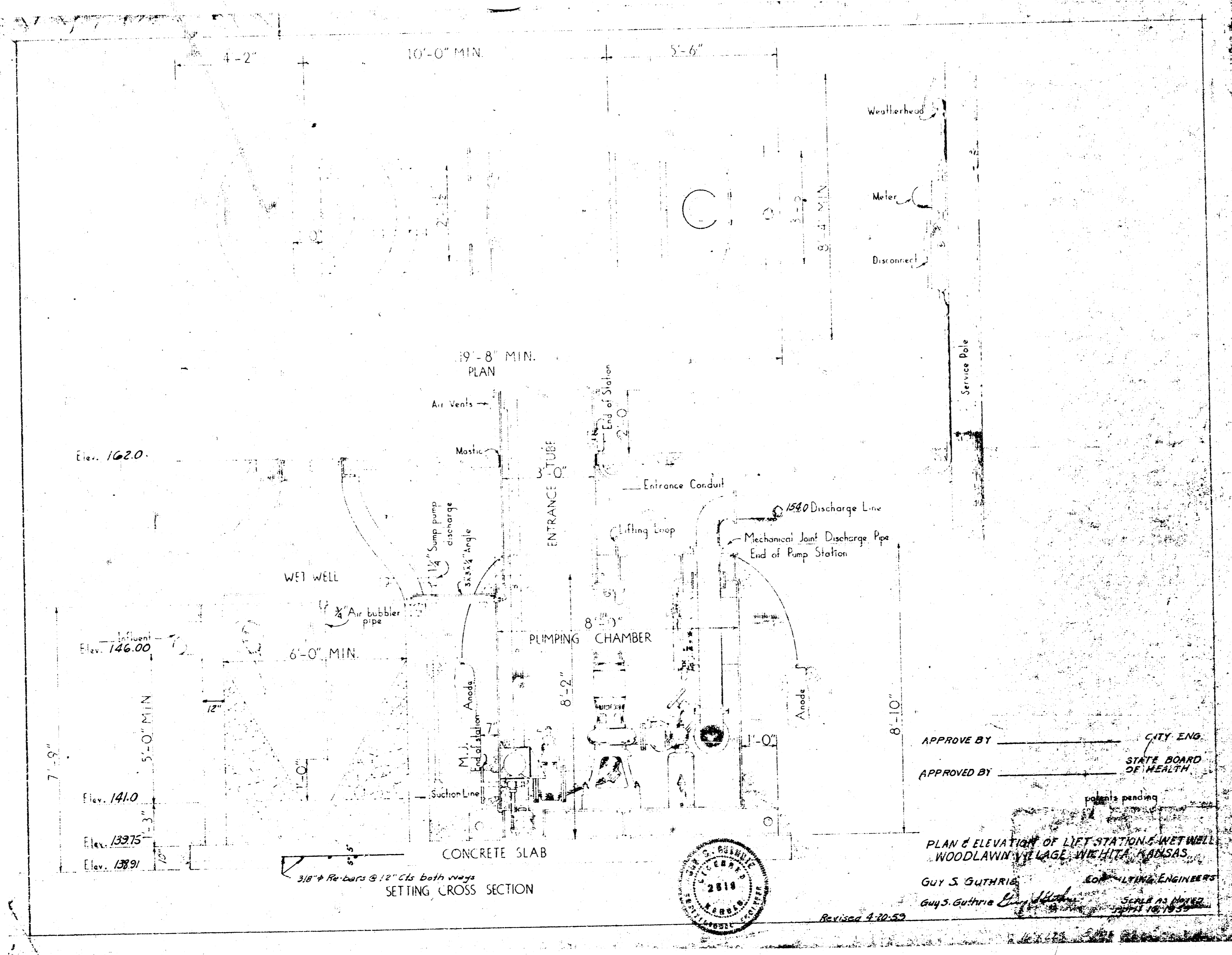
PLAN
 NOTE BOOK NO. 100001
 DATE 10-10-12



PROFILE
 NOTE BOOK NO. 100001
 DATE 10-10-12



APPROVED BY: [Signature]
 CITY ENGINEER
 APPROVED BY: [Signature]
 STATE ENGINEER OF WATER
 PLANNING FEE
 TEMPORARY 8 INCH FORCE MAIN
 8" GRAVITY LINE AND LIFT STATION
 WOODLAWN VILLAGE
 WICHITA KANSAS
 CITY OF WICHITA
 1003 VINCENT AVE
 WICHITA, KANSAS
 SCALE AS NOTED
 DATE 10/16/12



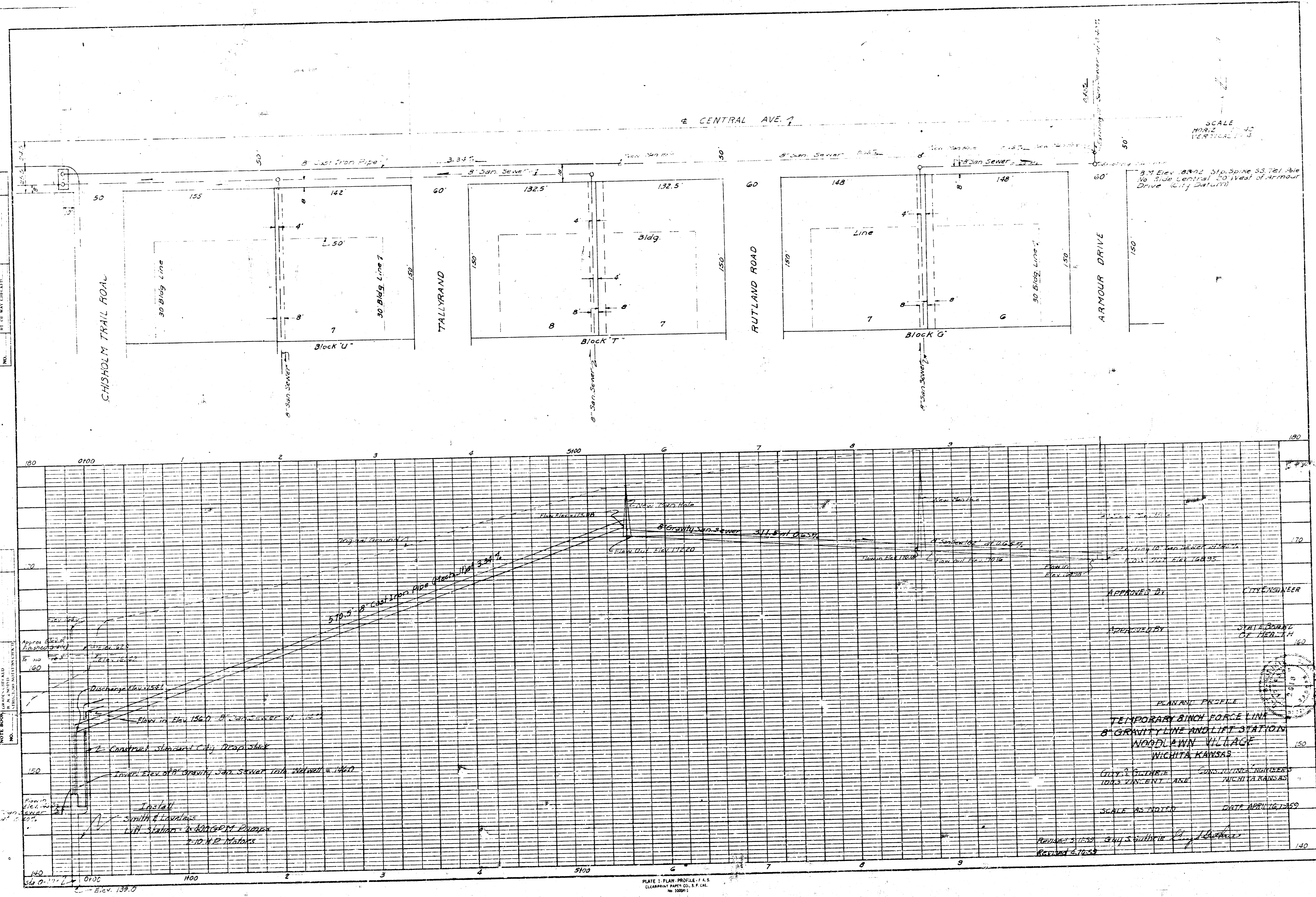
APPROVE BY _____ CITY ENG.
 APPROVED BY _____ STATE BOARD OF HEALTH

PLANS PENDING
 PLAN & ELEVATION OF LIFT STATION & WET WELL
 WOODLAWN VILLAGE, WICHITA, KANSAS.
 GUY S. GUTHRIE
 GUY S. GUTHRIE & ASSOCIATES
 CONSULTING ENGINEERS
 SCALE AS NOTED
 APRIL 18, 1950
 Revised 2-10-50



PLAN
 NOTE BOOK
 NO. 1000

PROFILE
 NOTE BOOK
 NO. 1000



APPROVED BY
 CITY ENGINEER

APPROVED BY
 STATE BOARD OF HEALTH

PLAN AND PROFILE
 TEMPORARY BINCH FORCE LINE
 8\" GRAVITY LINE AND LIFT STATION
 WOODLAWN VILLAGE
 WICHITA, KANSAS

CITY ENGINEER
 WICHITA, KANSAS

SCALE AS NOTED
 DATE APRIL 1950