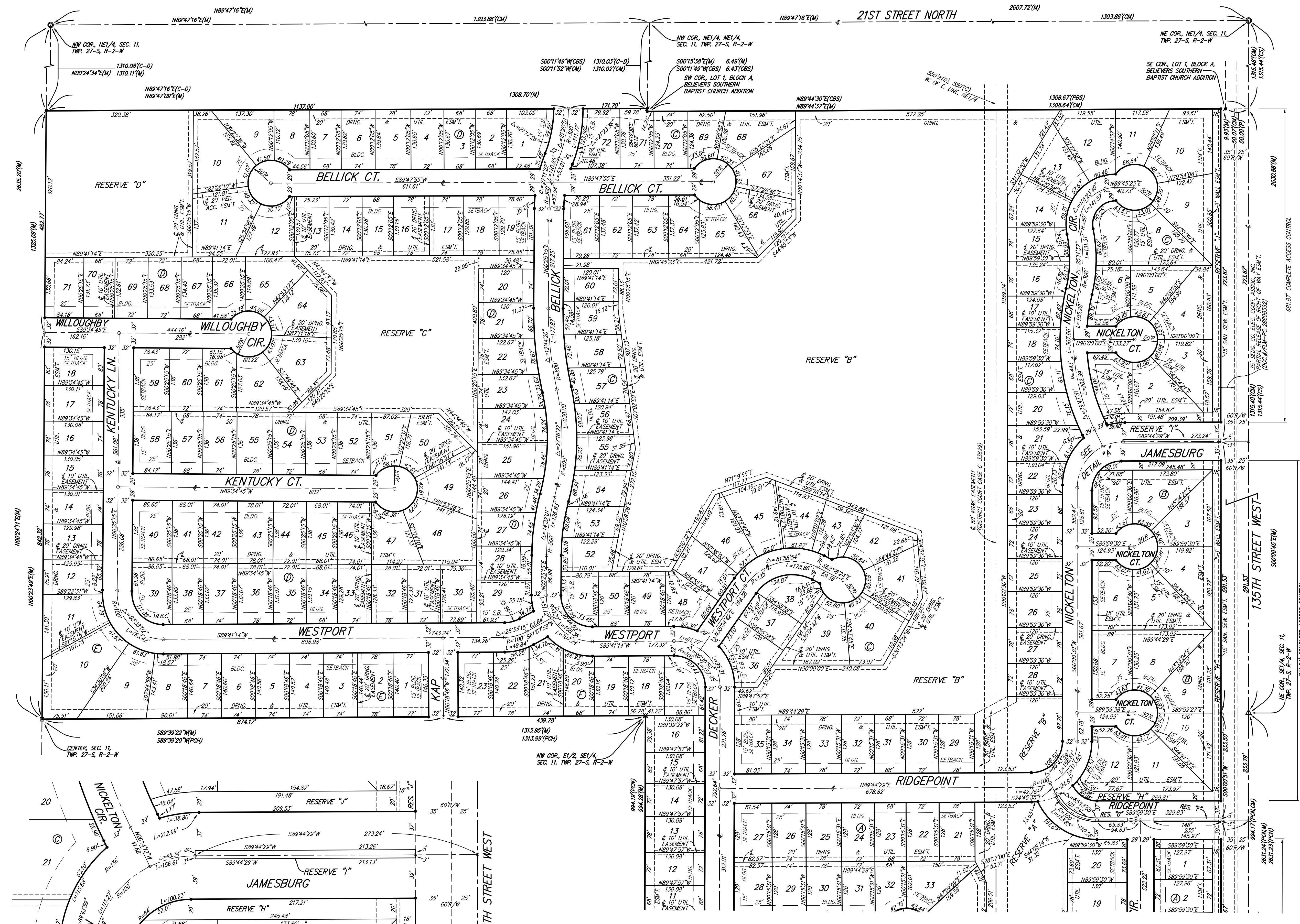


SILVERTON ADDITION WICHITA, SEDGWICK COUNTY, KANSAS



- = STONE (FOUND)
 - = #4 REBAR W/ "BAUGHMAN" CAP (FOUND)
 - = #4 IRON W/ COUNTY" CAP (FOUND)
 - ⊙ = #4 IRON IN THUMB (FOUND)
 - ⊗ = #4 REBAR W/ "BAUGHMAN" CAP (SET)
 - ⊗ = 1" IRON (FOUND)
- (M) = MEASURED
(P) = PLATTED
(PCN) = PLATTED INFO. PER COPPER GATE NORTH ADDITION
(PCH) = PLATTED INFO. PER CHERYL'S HOLLOW
(CM) = CALCULATED PER MEASURED INFO.
(CS) = FIGURES BASED ON CALCULATED SPLIT OF QUARTER SECTION
(PBS) = PLATTED INFO. PER BELIEVERS SOUTHERN BAPTIST CHURCH ADD.
(CBS) = CALCULATED INFO. PER BELIEVERS SOUTHERN BAPTIST CHURCH ADD.

LOT	BLOCK	ELEVATION
12-21, 33-37	A	1362.5
45-48	A	1362.5
12-36	C	1362.5
39-68	C	1362.5
10-11	D	1366.6
13-25	D	1364.0
49-53, 62-65	D	1364.0
67-71	D	1366.6
10-18	E	1366.6

135TH ST. W. & 13TH ST. N. - CITY OF WICHITA DISC AT SOUTHWEST CORNER OF INTERSECTION, 30.00' ± S. OF & OF 13TH ST. W. 35.00' ± W. OF & OF 135TH ST. W. ELEV. = 168.25 CITY DATUM (1355.65 NGVD29)

SMALL RAILROAD SPIKE IN 2ND HLP. W. OF 135TH ST. W. ON SOUTH SIDE OF 13TH ST. N. (N. FACE OF HLP). ELEV. = 1359.50 NGVD29

SMALL RAILROAD SPIKE IN 4TH HLP. W. OF 135TH ST. W. ON SOUTH SIDE OF 13TH ST. N. (N. FACE OF HLP). ELEV. = 1366.64 NGVD29

135TH ST. W. & 17TH ST. N. - CITY OF WICHITA DISC 28.00' ± OF & OF 135TH ST. W. ELEV. = 1357.73 NGVD29

DETAIL "A"
NO SCALE

NOTE:
A master grading plan for drainage has been developed for this subdivision and is on file with the City of Wichita, Kansas. All drainage easements, right-of-ways, or reserves shall remain at established grades or as modified with the approval of the City Engineer of the City of Wichita, Kansas. No obstructions which impede the flow of this drainage system shall be allowed.