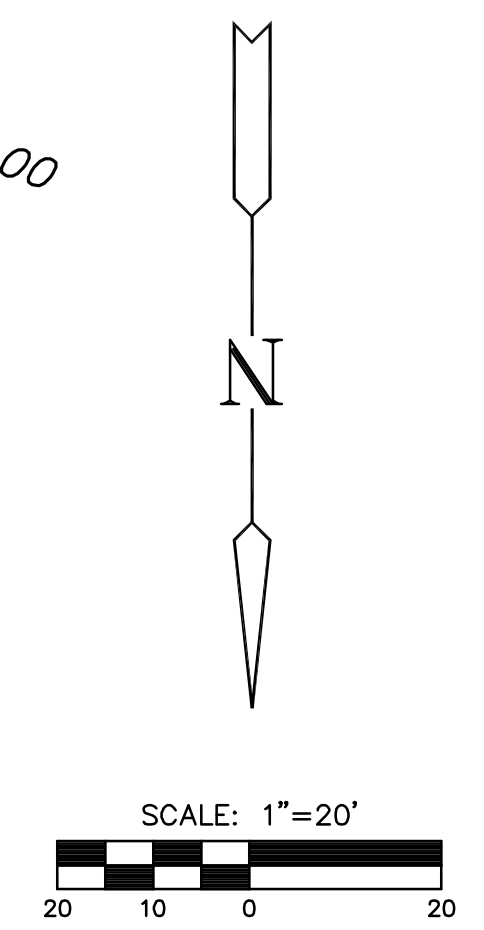
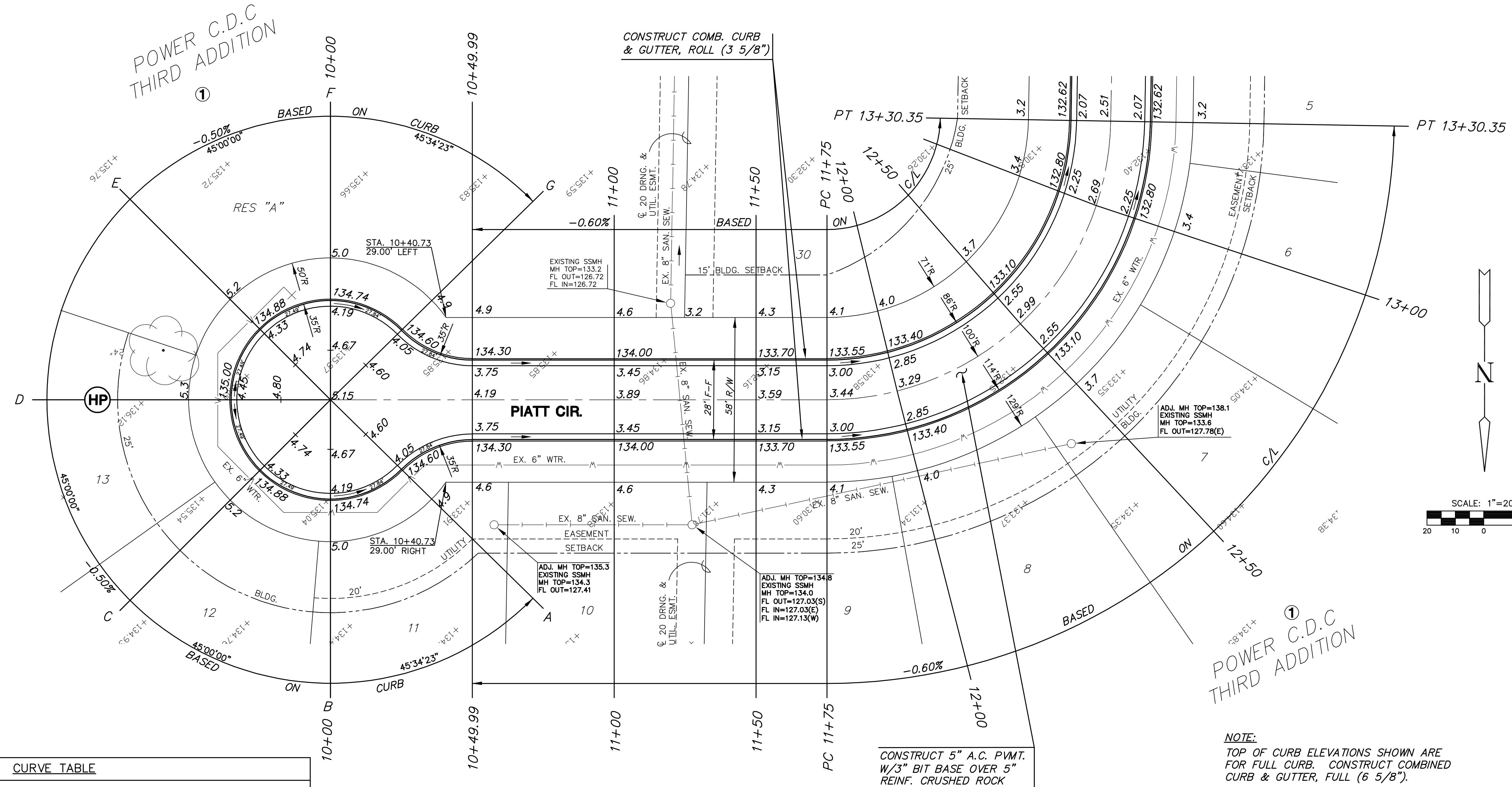


**PAVING AND INCIDENTAL DRAINAGE PLANS
POWER C.D.C. 3RD ADDITION**



CURVE TABLE					
$\Delta = 89^{\circ}00'00''$ $R = 100.00'$ $T = 98.27'$ $L = 155.33'$ $LC = 140.18'$					
CURVE DATA BASED ON CENTERLINE $\Delta/2 = 44^{\circ}30'00''$					
CHORD LENGTH					
STATION	ARC	8' Off LtCb	8' Off RtCb	DEFLECTION	TOTAL DEFLECTION
11+75.00	-	-	-	00°00'00"	00°00'00"
12+00.00	25.00'	19.45'	30.42'	07°09'43"	07°09'43"
12+25.00	25.00'	19.45'	30.42'	07°09'43"	14°19'26"
12+50.00	25.00'	19.45'	30.42'	07°09'43"	21°29'09"
12+75.00	25.00'	19.45'	30.42'	07°09'43"	28°38'52"
13+00.00	25.00'	19.45'	30.42'	07°09'43"	35°48'36"
13+25.00	25.00'	19.45'	30.42'	07°09'43"	42°58'19"
13+30.33	5.33'	4.16'	6.51'	01°31'41"	44°30'00"

Def/Ft = 17.18873 Min.

POWER C.D.C.
THIRD ADDITION

NOTE:
TOP OF CURB ELEVATIONS SHOWN ARE FOR FULL CURB. CONSTRUCT COMBINED CURB & GUTTER, FULL (6 5/8").

- LEGEND**
- STREET SIGN & SIGN LOCATION (SEE SIGN ASSEMBLY TABLE FOR TYPE & STATION OF SIGN)
 - PAVEMENT REMOVAL
 - 10' CURB TRANSITION

PIATT CIRCLE PAVING
SHEET TITLE
472-83774
PROJECT NUMBER

JTC
DESIGN BY
DDG
DRAWN BY
GJA
CHECKED BY

ISSUED
May 2008
REVISED

SHEET NO.
10 of 34

PLOTTED: Wednesday, May 07, 2008 @ 11:28AM

H:\CIVIL\02035\03084\DWG\PAVE\03084E3.DWG