

EASEMENT GRADING NOTES: **

- Easement Grading will be bid on a lump sum basis for grading the easements to the elevations shown on the Easement Grading Plan (this sheet). The Contractor shall figure the quantities when preparing the proposal.

**Graded widths and slopes may vary as approved by the Engineer to minimize conflict with existing trees and utilities.

GENERAL GRADING NOTES:

- Equipment and construction materials shall remain out of and away from tree driplines so as not to compact the root zone or damage trees. Chemical spill damage shall be prevented by filling gas tanks, cleaning tools and repairing equipment well outside tree protected root zones. Mixing trucks shall be rinsed off site. If a construction route or a proposed improvement occurs within a tree's protective root zone, it may be necessary, dependent upon the type of construction and equipment used, to install a root protection bridge or approved equivalent. This may be determined in the field at the direction of the owner's representative.
- Topsoil shall be replaced at a depth of 6" in reserve areas that have been disturbed. Note that the finished grade indicates the surface elevation after the topsoil layer has been replaced.

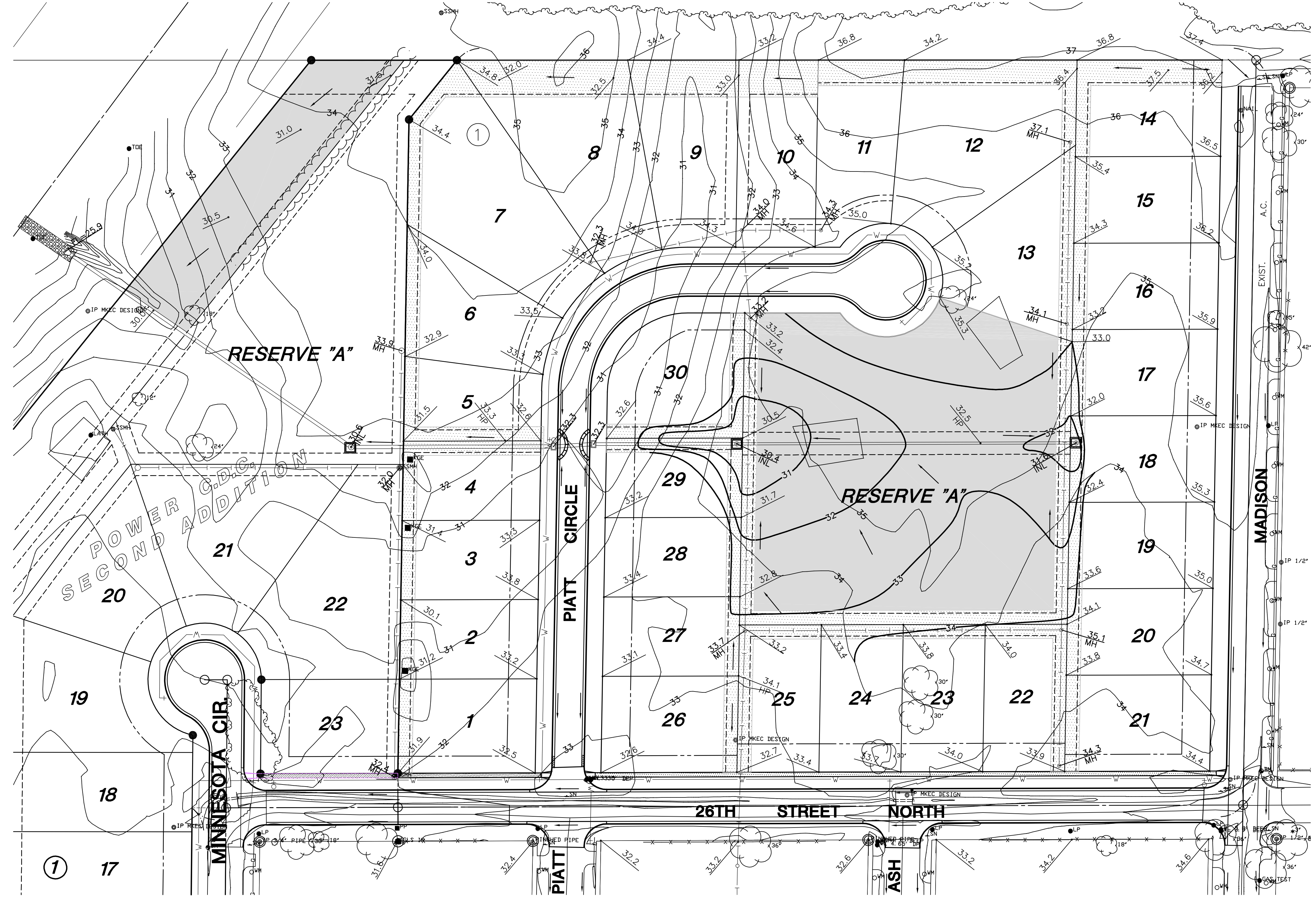


SCALE: 1" = 50'

LEGEND

- SILT FENCE (XXX L.F.)
- INLET SEDIMENT BARRIER
- EXISTING CONTOURS
- PROPOSED CONTOURS
- EASEMENT GRADING**
- HIGH POINT
- LOW POINT

NOTE:
RE-USE OR REPLACE EXISTING BACK YARD INLET FILTERS FROM PREVIOUS STORM SEWER PROJECT AS NEEDED. COST SUBSIDIARY TO PROJECT.



EASEMENT GRADING
SHEET TITLE
472-83774
PROJECT NUMBER

DESIGN BY: JWC
DRAWN BY: DDG
CHECKED BY: GJA

ISSUED: May 2008
REVISED:

SHEET NO.
20 of 34

PLOTTED: Wednesday, May 07, 2008 @ 11:28AM

H:\CIVIL\02035\03084.DWG\GRAD\03084_ESMT_GRAD.DWG