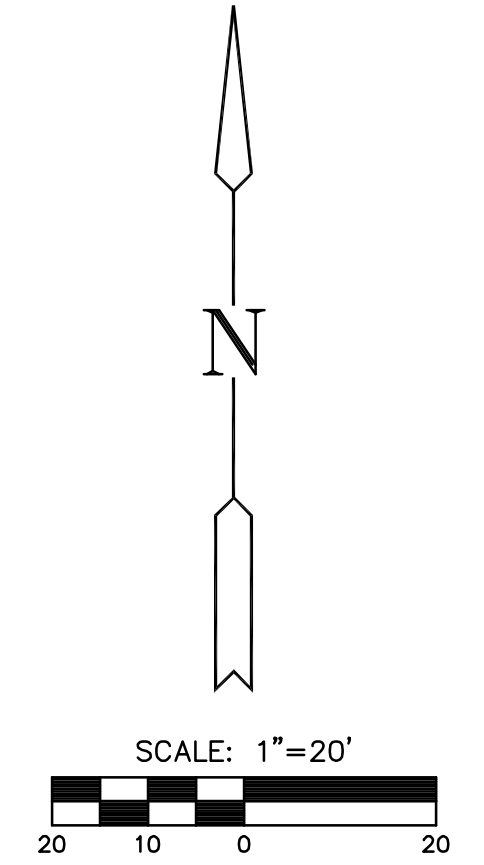
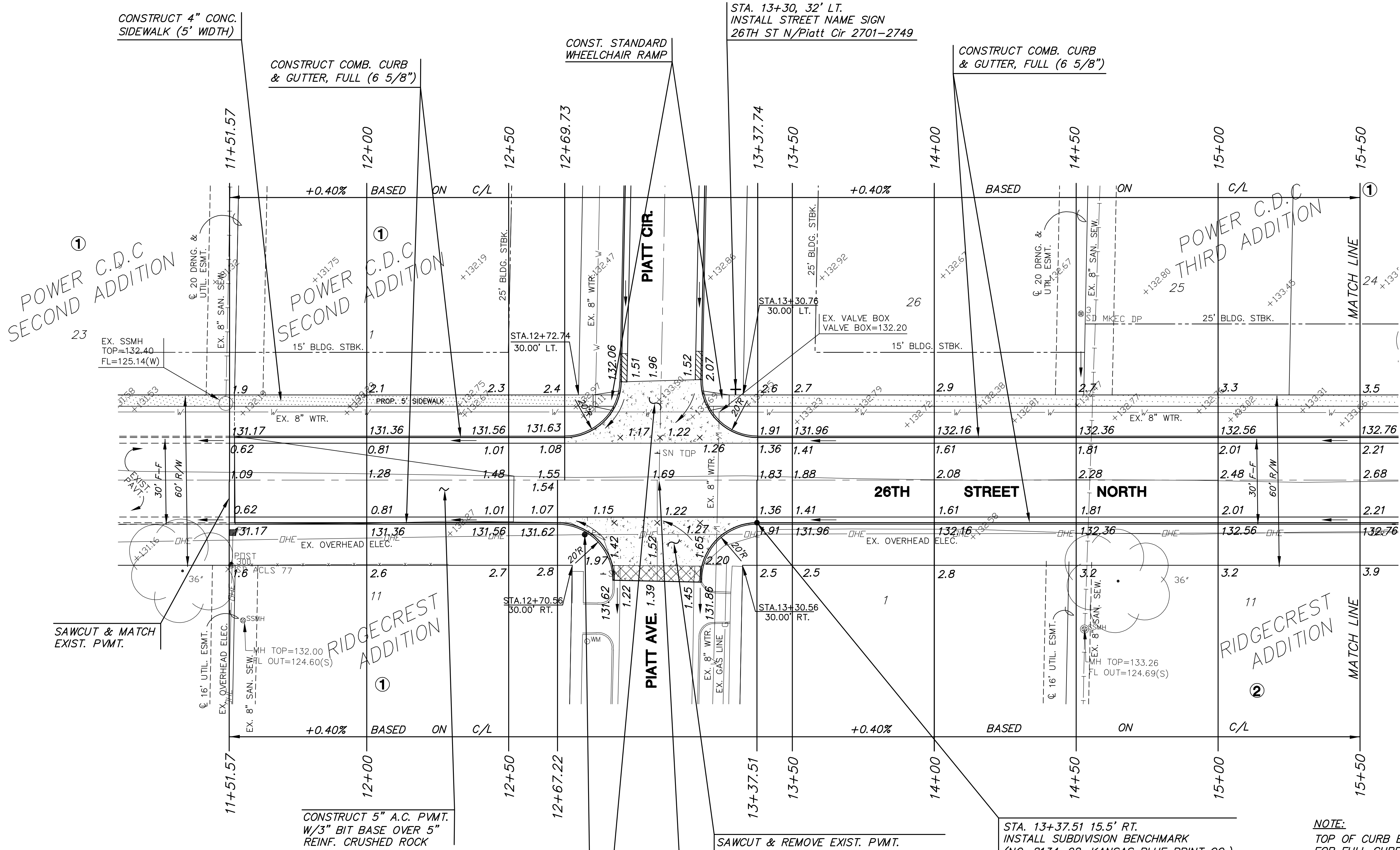


**PAVING AND INCIDENTAL DRAINAGE PLANS
POWER C.D.C. 3RD ADDITION**



LEGEND

- STREET SIGN & SIGN LOCATION (SEE SIGN ASSEMBLY TABLE FOR TYPE & STATION OF SIGN)
- PAVEMENT REMOVAL
- 10' CURB TRANSITION

NOTE:
TOP OF CURB ELEVATIONS SHOWN ARE FOR FULL CURB. CONSTRUCT COMBINED CURB & GUTTER, FULL (6 5/8").

SUBDIVISION BENCH MARKS				
NO.	STREET AND STATION	FROM CL	DESCRIPTION	ELEVATIONS
1	26TH ST. N., STA. 13+37.51	15.5' RT	TOP OF CURB AT SE. END OF CURB RETURN OF VALLEY GUTTER	131.90
2	26TH ST. N., STA. 18+63.04	15.5' LT	TOP OF CURB AT NW. END OF CURB RETURN OF VALLEY GUTTER	134.01
3	PIATT CIRCLE, STA. 13+78	14.0' RT	TOP OF CURB AT FIRE HYDRANT	132.33

NOTE: CONTRACTOR SHALL INSTALL SUBDIVISION BENCH MARKS ("FLAT SURVEY MARKERS NO. 8134-08 3" TOP DIAMETER" PROVIDED BY KANSAS BLUE PRINT CO., INC.) COSTS TO BE CONSIDERED SUBSIDIARY TO CONSTRUCTION OF COMBINED CURB AND GUTTER.

26TH ST. NO. PAVING
SHEET TITLE
472-83774
PROJECT NUMBER

JTC
DESIGN BY
DDG
DRAWN BY
GJA
CHECKED BY

ISSUED
May 2008
REVISED

SHEET NO.
8 of 34