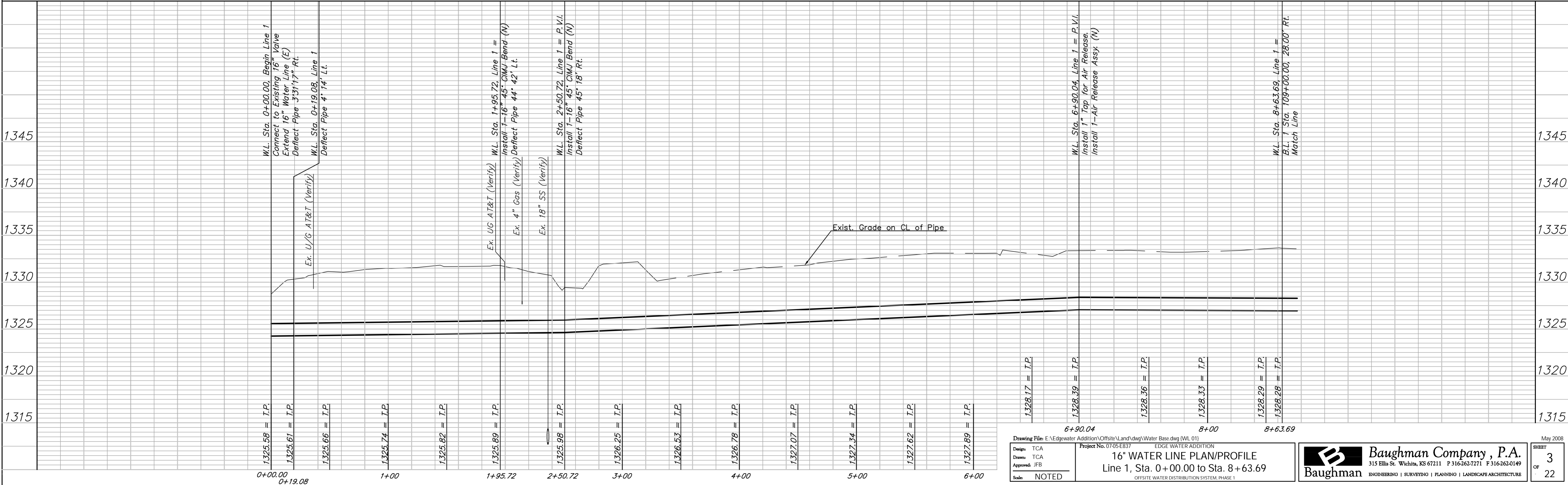
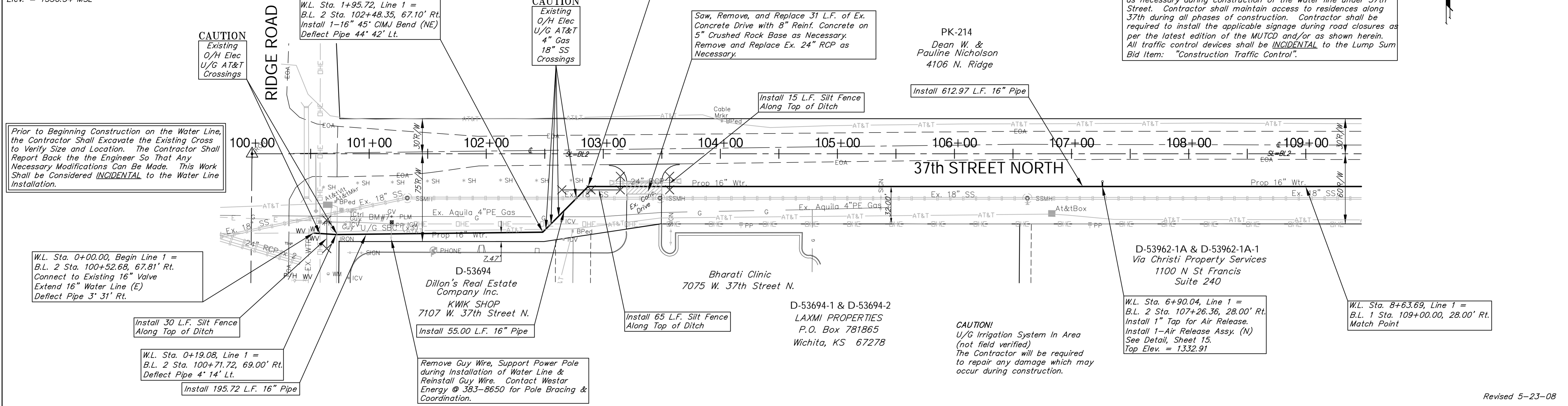
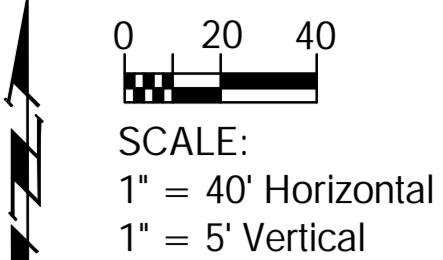


Benchmarks

BM #6: Ridge Port and 37th St. - N Rim of SS MH,
100' E of Centerline, 54' S of Centerline.
Elev. = 1332.71

BM #7 - Railroad Spike in the North Face of the
Second Power Pole East of Ridge Road on the South
Side of 37th Street North, Sta. 101+19.45, 59' Rt.
Elev. = 1330.54 MSL



Drawing File: E:\Edgewater Addition\Offsite\Land\dwg\Water Base.dwg (WL 01)
 Project No. 0705-EB37 EDGE WATER ADDITION
16" WATER LINE PLAN/PROFILE
 Line 1, Sta. 0+00.00 to Sta. 8+63.69
 OFFSITE WATER DISTRIBUTION SYSTEM, PHASE 1

Design: TCA
 Drawn: TCA
 Approved: JFB
 Scale: NOTED

Baughman Company, P.A.
 315 Ellis St. Wichita, KS 67211 P 316-262-7171 F 316-262-0149
 ENGINEERING | SURVEYING | PLANNING | LANDSCAPE ARCHITECTURE

May 2008
 SHEET 3 OF 22

Revised 5-23-08