

Benchmarks

BM #6: Ridge Port and 37th St. - N Rim of SS MH,
100' E of Centerline, 54' S of Centerline.
Elev. = 1332.71

BM #7 - Railroad Spike in the North Face of the
Second Power Pole East of Ridge Road on the South
Side of 37th Street North, Sta. 101+19.45, 59' Rt.
Elev. = 1330.54 MSL

Install 474 L.F. Fescue Sod as Measured
Along the Water Line from Sta. 8+64 to
Sta. 14+00. See General Note 12 for
More Information.

W.L. Sta. 12+05.45, Line 1 =
B.L. 2 Sta. 112+41.76, 28.00 Rt.
Install 1-16"x8" CIMJ Tee (S)
Install 1-8" Valve Assy. (S)
(Gate Valve)
Valve Box Elev. = 1334.87
Install 21.50 L.F. 8" Pipe (S)
Install 1-Swing Fire Hydrant Assy. (W)
L = 7.00'
Valve Box Elev. = 1334.87
Bury Line Elev. = 1334.92
Remove Ex. 2" Blowoff Assy
Connect to Ex. 8" Water

W.L. Sta. 14+66.46, Line 1 =
B.L. 2 Sta. 115+02.77, 28.00' Rt.
Install 1-16" 45° CIMJ Bend (S)
Install 1-16" 45° CIMJ Bend (S)
Defect Pipe 45'0" Rt.

Install 27.66 L.F. 16" Pipe

Reseed 372 L.F. According to General
Note 13 as Measured Along the Water
Line from Sta. 14+00 to Sta. 17+72.

CAUTION
Existing
18" SS
Crossing

W.L. Sta. 14+94.12, Line 1 =
B.L. 2 Sta. 115+22.33, 47.56' Rt.
Install 1-16" 45° CIMJ Bend (E)
Defect Pipe 45'51"14" Lt.

W.L. Sta. 17+71.79, Line 1 =
B.L. 2 Sta. 118+00.00, 46.00' Rt.
Match Point

W.L. Sta. 8+63.69, Line 1 =
B.L. 2 Sta. 109+00.00, 28.00' Rt.
Match Point

D-53962-1A & D-53962-1A-1
Via Christi Property Services
1100 N St Francis
Suite 240

Mid Kansas Pediatrics
6837 W. 37th N.

CAUTION
Existing
18" SS
Crossing

CAUTION
Existing
24" SWS
Crossing

Saw, Remove, & Replace 62 L.F. of
Ex. Asphalt Drive with 6" Asphalt on
6" Crushed Rock Base as Necessary.

Install 261.01 L.F. 16" Pipe

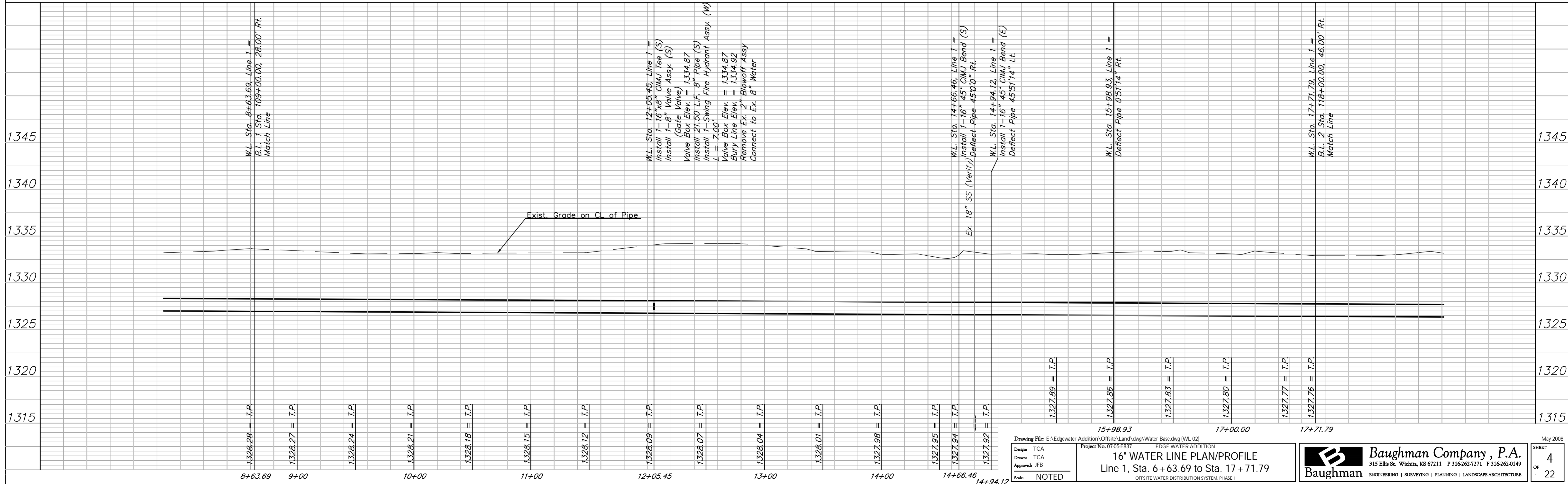
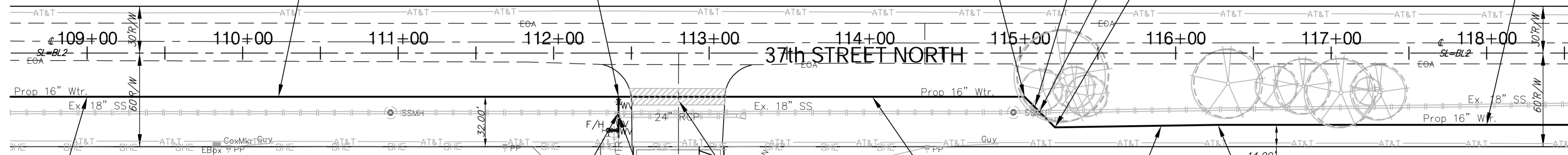
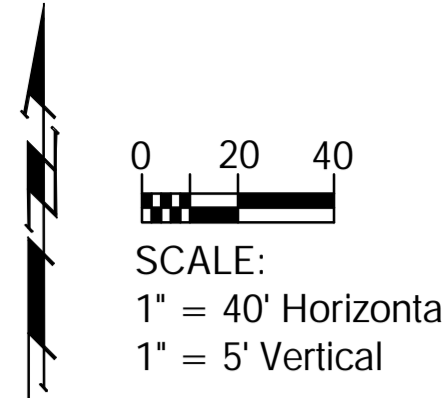
Install 277.67 L.F. 16" Pipe

Via Christi Property Services
1100 N St Francis
Suite 240

B.L. 2 Sta. 116+58.15,
91.10 Rt.
Cont. Point # 452

W.L. Sta. 15+98.93, Line 1 =
B.L. 2 Sta. 116+27.14, 46.00' Rt.
Defect Pipe 0'51"14" Rt.

CAUTION!
U/G Irrigation System In Area
(not field verified)
The Contractor will be required
to repair any damage which may
occur during construction.



Drawing File: E:\edgewater Addition\Offsite\Land\dwg\Water Base.dwg (WL 02)
Project No. 0705-EB37
16" WATER LINE PLAN/PROFILE
Line 1, Sta. 6+63.69 to Sta. 17+71.79
Scale: NOTED

Baughman Company, P.A.
315 Ellis St. Wichita, KS 67211 P 316-262-7171 F 316-262-0149
ENGINEERING | SURVEYING | PLANNING | LANDSCAPE ARCHITECTURE