

Benchmarks

BM #5: Hoover and 37th St. N - COW Benchmark at SW corner of Intersection, 16.40' W of PP, 7.40' n of PP, 3.00' E of 4' high chain link fence, 15.20' WNW of chain link fence corner, 48.50' SW of Section corner Iron, 17.20' S of Centerline, 48.00' W of Centerline.
Elev. = 1333.68

BM #6: Ridge Port and 37th St. - N Rim of SS MH, 100' E of Centerline, 54' S of Centerline.
Elev. = 1332.71

BM #7 - Railroad Spike in the North Face of the Second Power Pole East of Ridge Road on the South Side of 37th Street North, Sta. 101+19.45, 59' Rt.
Elev. = 1330.54 MSL

Reseed 751 L.F. According to General Note 13 as Measured Along the Water Line from Sta. 17+72 to Sta. 22+53 and Sta. 23+82 to Sta. 26+52.

W.L. Sta. 23+11.36, Line 1 =
B.L. 2 Sta. 123+39.57, 46.00' Rt.
Install 1-16" X 8" CIMJ Tee (S)
Install 1-16" Line Valve Assy (W) (Butterfly Valve)
Valve Box Elev. = 1333.54
Install 1-8" Valve Assy (S) (Gate Valve)
Valve Box Elev. = 1333.54
Remove Ex. 2" Blowoff Assy
Connect to Ex. 8" Water

Install 53 L.F. Fescue Sod as Measured Along the Water Line from Sta. 23+03 to Sta. 23+56. See General Note 12 for More Information.

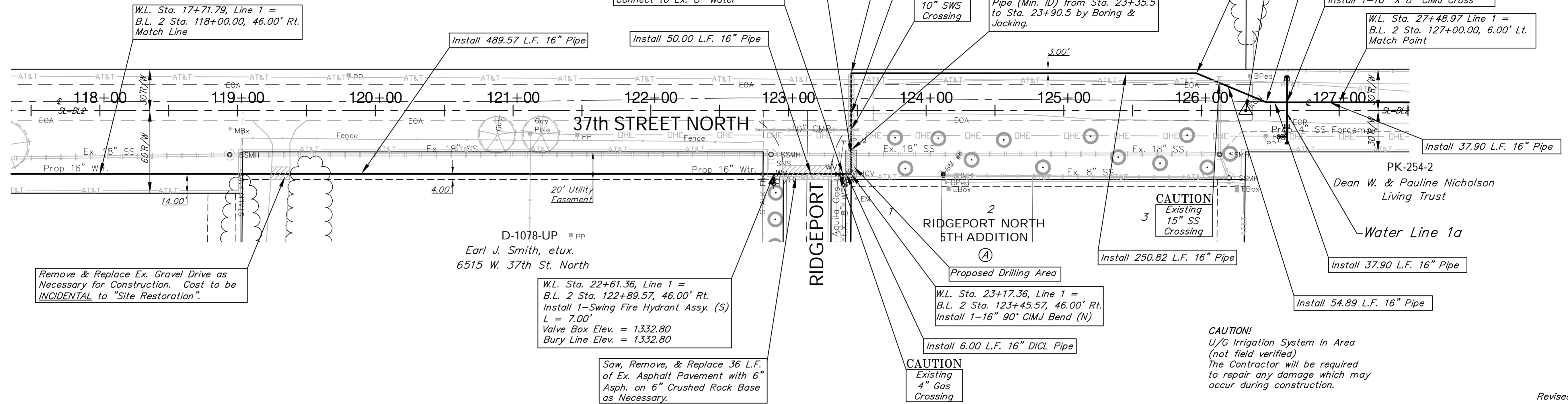
B.L. 2 Sta. 126+32.14 =
Cont. Point #5006
SW CORNER, SE 1/4
SEC. 27, TWP. 26 S. R1W

W.L. Sta. 26+41.18 Line 1 =
B.L. 2 Sta. 125+99.11, 27.00' Lt.
Install 1-16" 22.5" CIMJ Bend (Rt.)

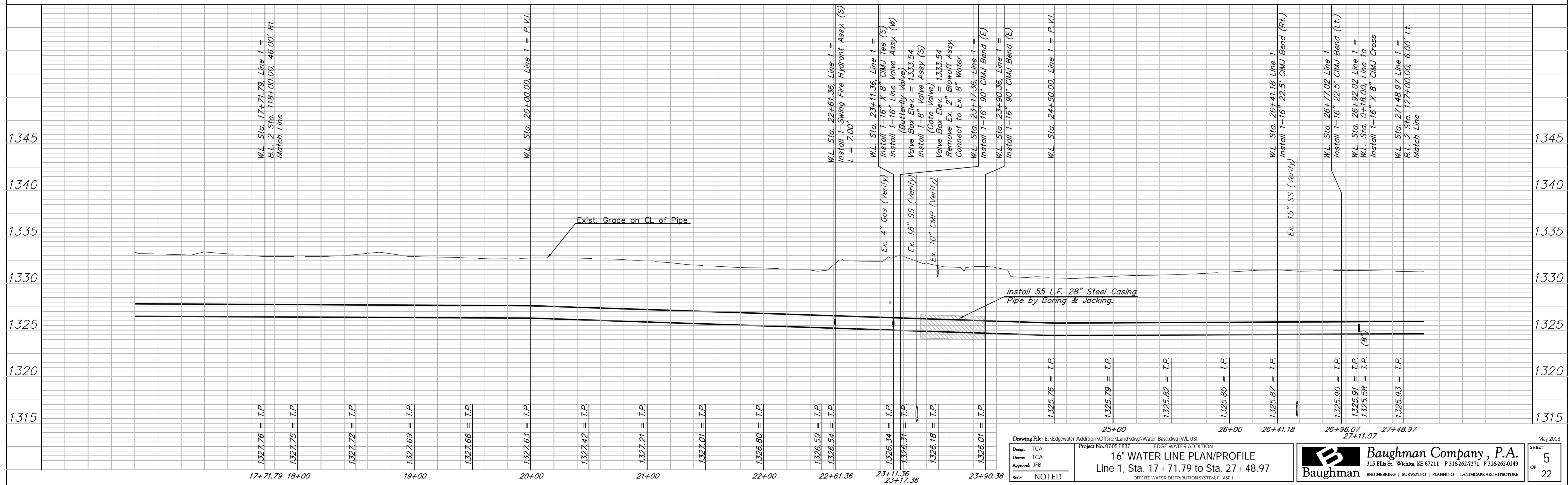
W.L. Sta. 26+96.07 Line 1 =
B.L. 2 Sta. 126+32.15, 6.00' Lt.
Install 1-16" 22.5" CIMJ Bend (Lt.)

W.L. Sta. 27+11.07 Line 1 =
W.L. Sta. 0+30.00, Line 1a =
B.L. 2 Sta. 126+62.10, 6.00' Lt.
Install 1-16" X 8" CIMJ Cross

W.L. Sta. 27+48.97 Line 1 =
B.L. 2 Sta. 127+00.00, 6.00' Lt.
Match Point



Revised 5-23-08



Drawing File: E:\edgewater Addition\Offsite\Land\dwg\Water Base.dwg (WL 03)
Project No. 0705-EB37
Scale: NOTED

Baughman Company, P.A.
315 Ellis St. Wichita, KS 67211 P 316-262-0149 F 316-262-0149
ENGINEERING | SURVEYING | PLANNING | LANDSCAPE ARCHITECTURE

May 2008
SHEET 5 OF 22