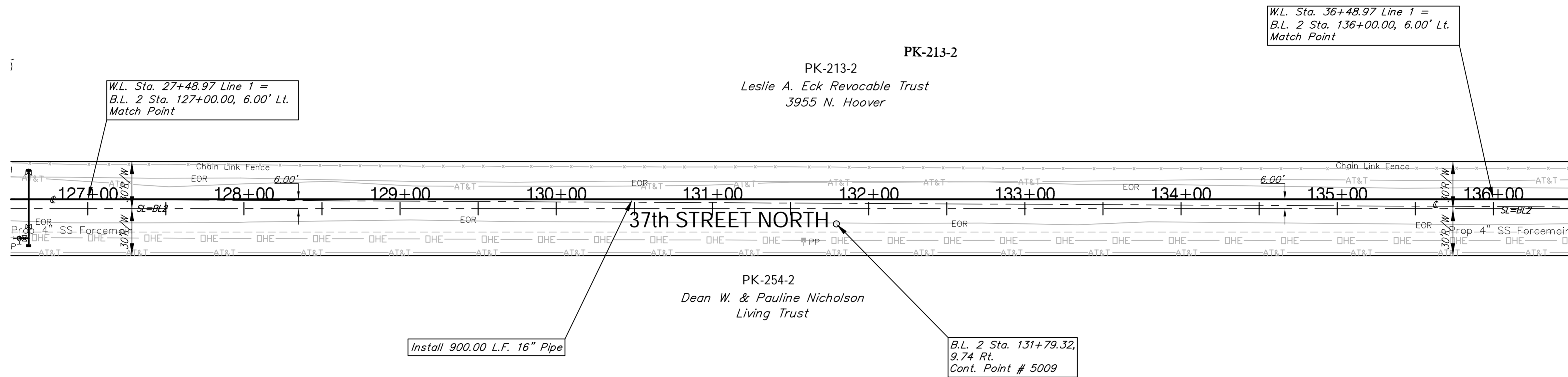
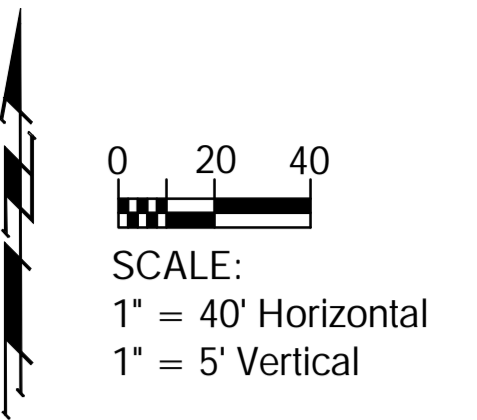


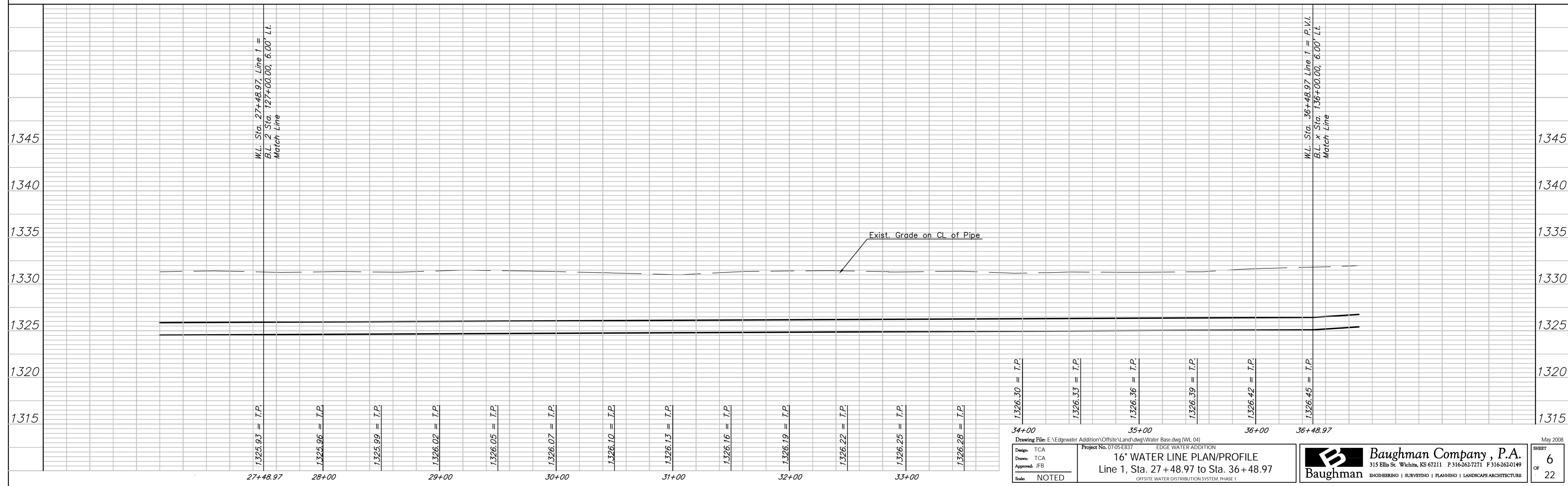
# Benchmarks

BM #5: Hoover and 37th St. N - COW  
 Benchmark at SW corner of Intersection, 16.40'  
 W of PP, 7.40' n of PP, 3.00' N of 4' high  
 chain link fence, 15.20' WNW of chain link  
 fence corner, 48.50' SW of Section corner Iron,  
 17.20' S of Centerline, 48.00' W of Centerline.  
 Elev. = 1333.68

BM #6: Ridge Port and 37th St. - N Rim of  
 SS MH, 100' E of Centerline, 54' S of  
 Centerline.  
 Elev. = 1332.71



Revised 5-23-08



Drawing File: E:\Edgewater Addition\Offsite\Land\dwg\Water Base.dwg (WL 04) Design: TCA Drawn: TCA Approved: JFB Scale: NOTED	Project No. 0705-EB37 <b>16" WATER LINE PLAN/PROFILE</b> Line 1, Sta. 27+48.97 to Sta. 36+48.97 OFFSITE WATER DISTRIBUTION SYSTEM, PHASE 1	Baughman Company, P.A. 315 Ellis St. Wichita, KS 67211 P 316-262-7171 F 316-262-0149 ENGINEERING   SURVEYING   PLANNING   LANDSCAPE ARCHITECTURE	May 2008 SHEET <b>6</b> OF <b>22</b>
---	---	--	--