

Benchmarks

BM #4: COW BM North R/W of K-96 and West R/W of North Hoover Road, 6.9' ESE of PP, and 42.5' west of centerline.
Elev. = 1333.14 MSL (145.74 City Datum)

BM #5: Hoover and 37th St. N - COW Benchmark at SW corner of Intersection, 16.40' W of PP, 7.40' n of PP, 3.00' N of 4' high chain link fence, 15.20' WNW of chain link fence corner, 48.50' SW of Section corner Iron, 17.20' S of Centerline, 48.00' W of Centerline.
Elev. = 1333.68

BM #6: Ridge Port and 37th St. - N Rim of SS MH, 100' E of Centerline, 54' S of Centerline.
Elev. = 1332.71

Reseed 860 L.F. According to General Note 13 as Measured Along the Water Line from Sta. 0+00 to Sta. 8+60.

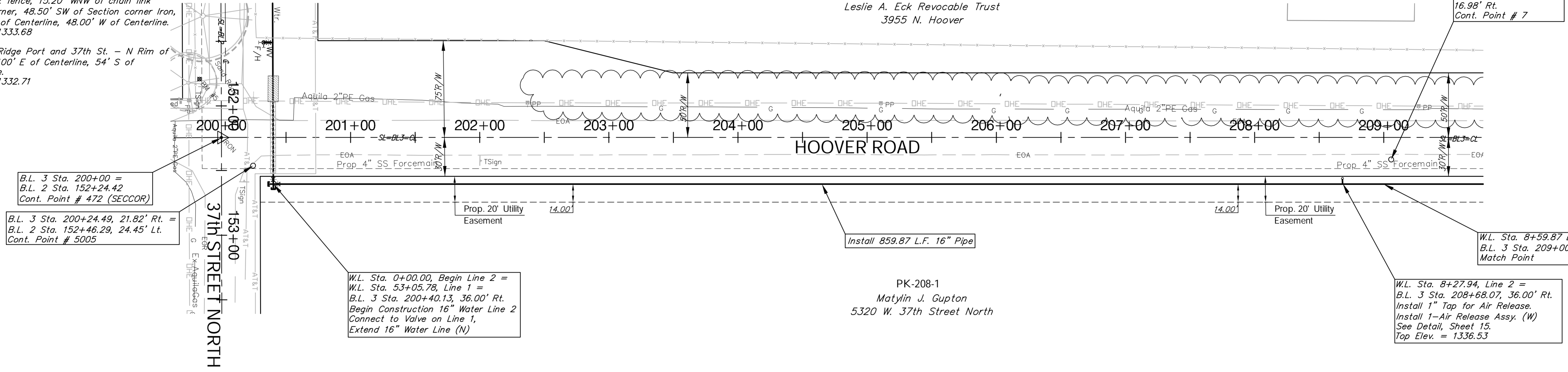
TRAFFIC CONTROL ON 37TH STREET NORTH

Contractor shall be required to maintain two-way traffic along Hoover Road during all phases of the Project.



0 20 40

SCALE:
1" = 40' Horizontal
1" = 5' Vertical



B.L. 3 Sta. 200+00 =
B.L. 2 Sta. 152+24.42
Cont. Point # 472 (SECCOR)

B.L. 3 Sta. 200+24.49, 21.82' Rt. =
B.L. 2 Sta. 152+46.29, 24.45' Lt.
Cont. Point # 5005

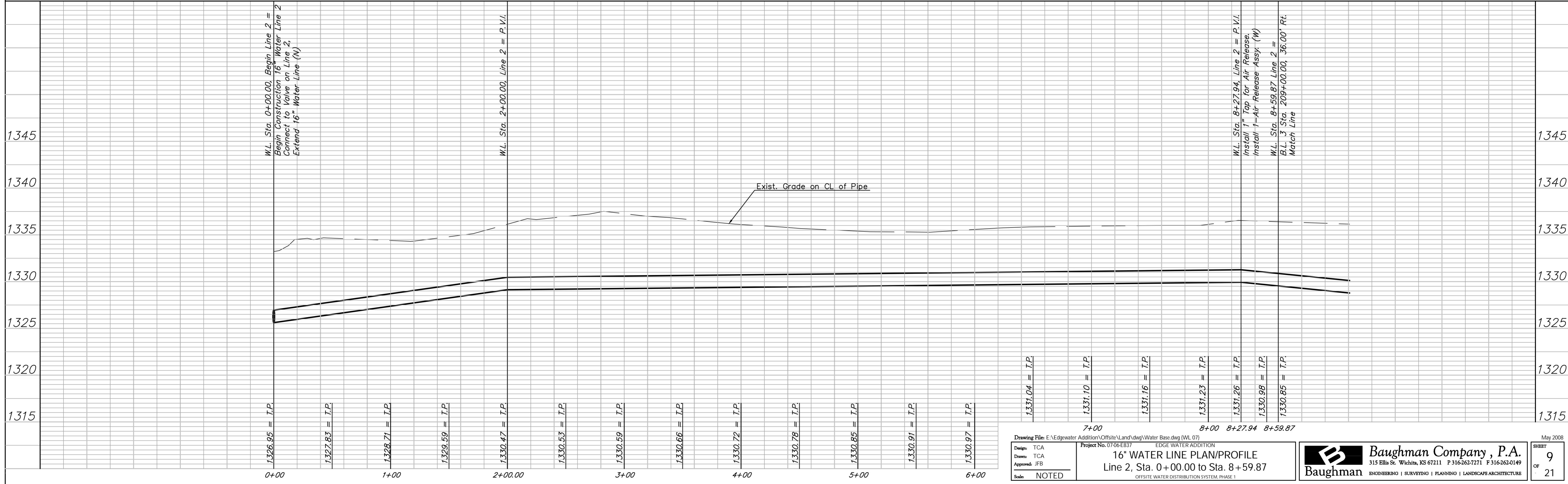
W.L. Sta. 0+00.00, Begin Line 2 =
W.L. Sta. 53+05.78, Line 1 =
B.L. 3 Sta. 200+40.13, 36.00' Rt.
Begin Construction 16" Water Line 2
Connect to Valve on Line 1,
Extend 16" Water Line (N)

Install 859.87 L.F. 16" Pipe

B.L. 3 Sta. 209+05.77,
16.98' Rt.
Cont. Point # 7

W.L. Sta. 8+59.87 Line 2 =
B.L. 3 Sta. 209+00.00, 36.00' Rt.
Match Point

W.L. Sta. 8+27.94, Line 2 =
B.L. 3 Sta. 208+68.07, 36.00' Rt.
Install 1" Tap for Air Release.
Install 1-Air Release Assy. (W)
See Detail, Sheet 15.
Top Elev. = 1336.53



Drawing File: E:\Edgewater Addition\Offsite\Land\dwg\Water Base.dwg (WL 07)
Project No. 0706-EB37
16" WATER LINE PLAN/PROFILE
Line 2, Sta. 0+00.00 to Sta. 8+59.87
Scale: NOTED

Baughman Company, P.A.
315 Ellis St. Wichita, KS 67211 P 316-262-7171 F 316-262-0149
ENGINEERING | SURVEYING | PLANNING | LANDSCAPE ARCHITECTURE

May 2008
SHEET 9 OF 21