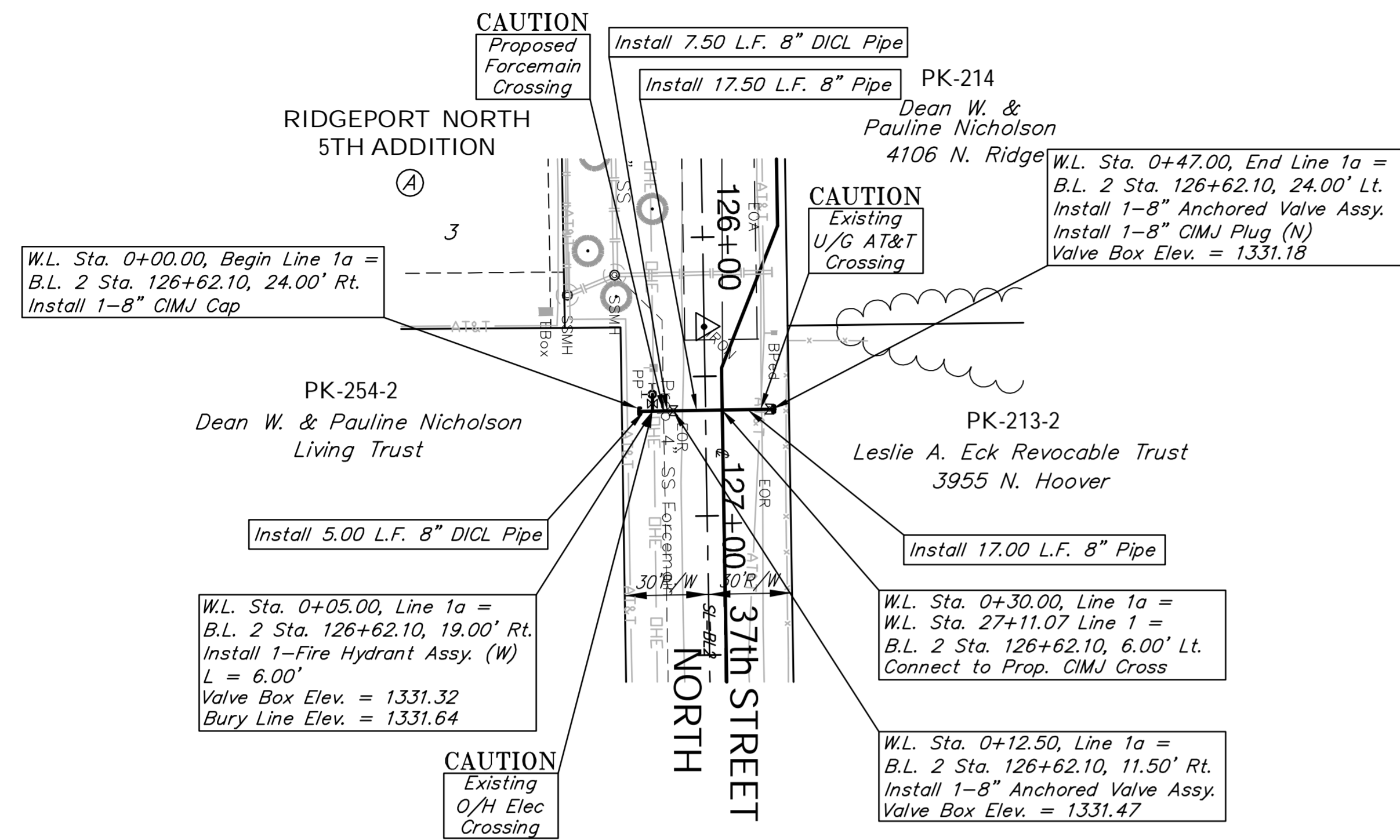
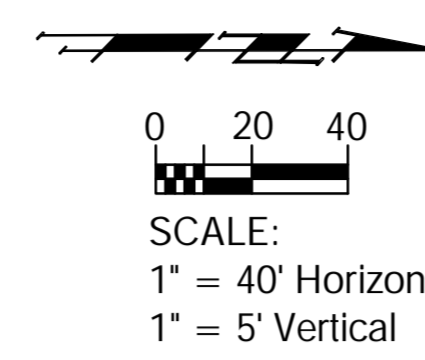


# Benchmarks

BM #6: Ridge Port and 37th St. - N Rim of SS MH, 100' E of Centerline, 54' S of Centerline. Elev. = 1332.71

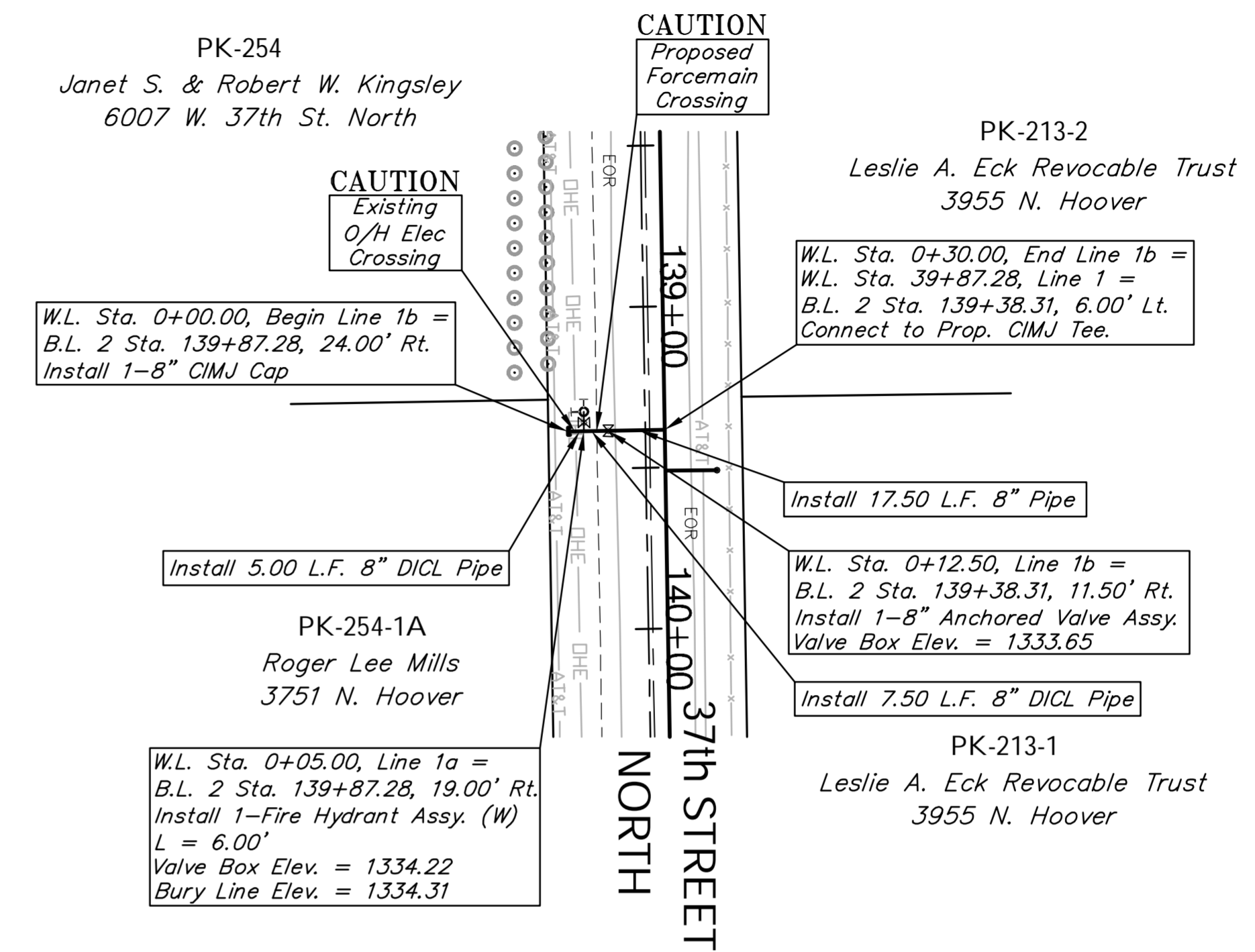
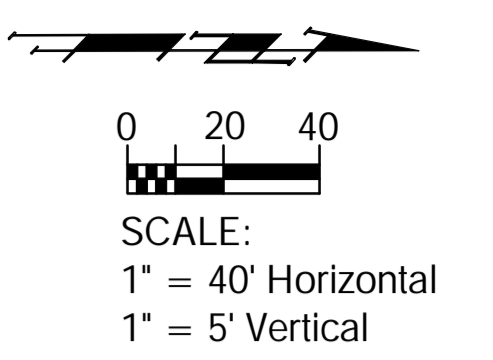
Reseed 16 L.F. According to General Note 13 as Measured Along the Water Line from Sta. 0+00 to Sta. 0+16.



# Benchmarks

BM #5: Hoover and 37th St. N - COW Benchmark at SW corner of Intersection, 16.40' W of PP, 7.40' n of PP, 3.00' N of 4' high chain link fence, 15.20' WNW of chain link fence corner, 48.50' SW of Section corner Iron, 17.20' S of Centerline, 48.00' W of Centerline. Elev. = 1333.68

Reseed 15 L.F. According to General Note 13 as Measured Along the Water Line from Sta. 0+00 to Sta. 0+15.



Revised 5-23-08

