

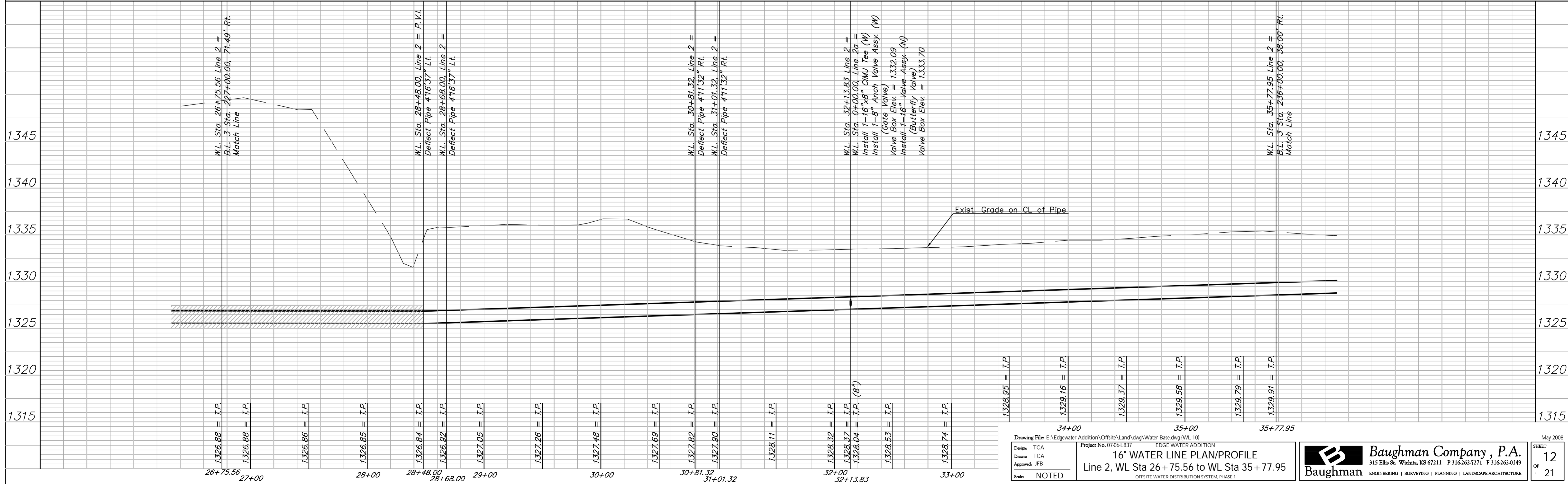
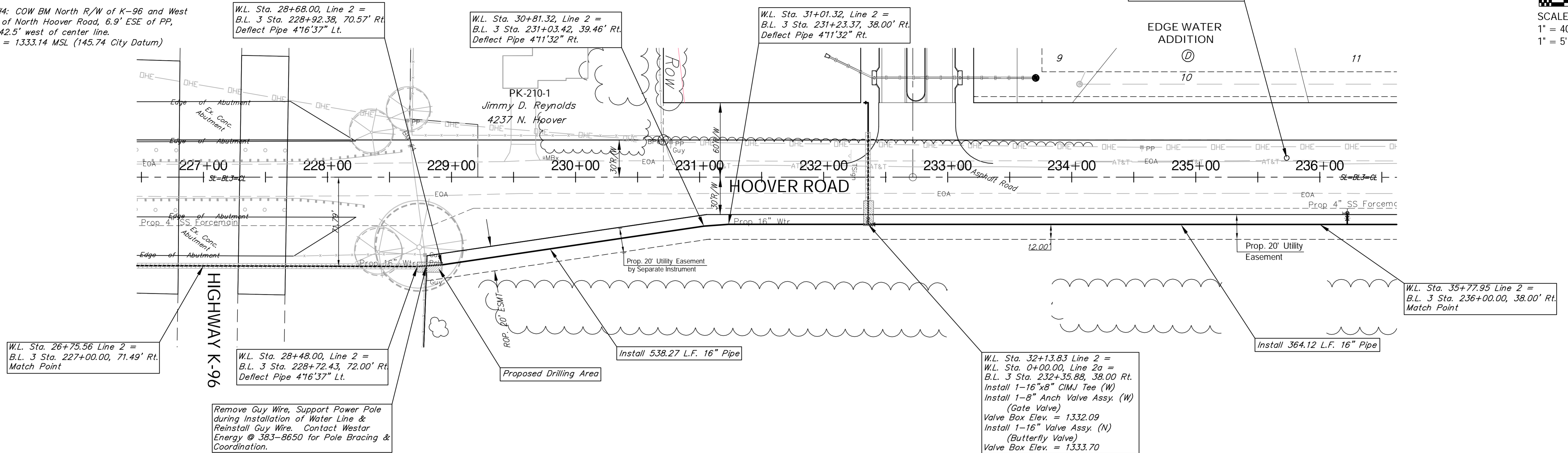
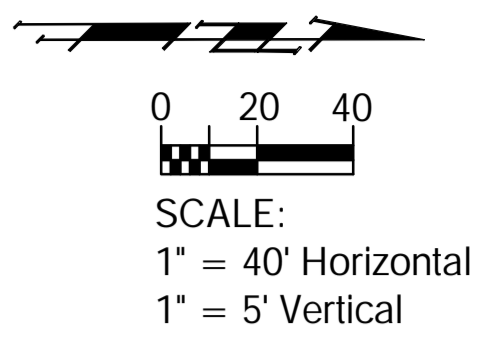
# Benchmarks

BM #3: 60d Nail in PP at the SE corner of exception on W side of Hoover St., South of 45th St. N.  
Elev. = 1335.26

BM #4: COW BM North R/W of K-96 and West R/W of North Hoover Road, 6.9' ESE of PP, and 42.5' west of center line.  
Elev. = 1333.14 MSL (145.74 City Datum)

Reseed 730 L.F. According to General Note 13 as Measured Along the Water Line from Sta. 28+48 to Sta. 35+78.

B.L. 3 Sta. 235+73.27, 15.56' Lt.  
Cont. Point # 5



Drawing File: E:\Edgewater Addition\Offsite\Land\dwg\Water Base.dwg (WL 10) Design: TCA Drawn: TCA Approved: JFB Scale: NOTED	Project No. 0706EB37 <b>16" WATER LINE PLAN/PROFILE</b> Line 2, WL Sta 26+75.56 to WL Sta 35+77.95 OFFSITE WATER DISTRIBUTION SYSTEM, PHASE 1	<b>Baughman</b> ENGINEERING   SURVEYING   PLANNING   LANDSCAPE ARCHITECTURE	May 2008 SHEET <b>12</b> OF <b>21</b>
---	--	--	---