

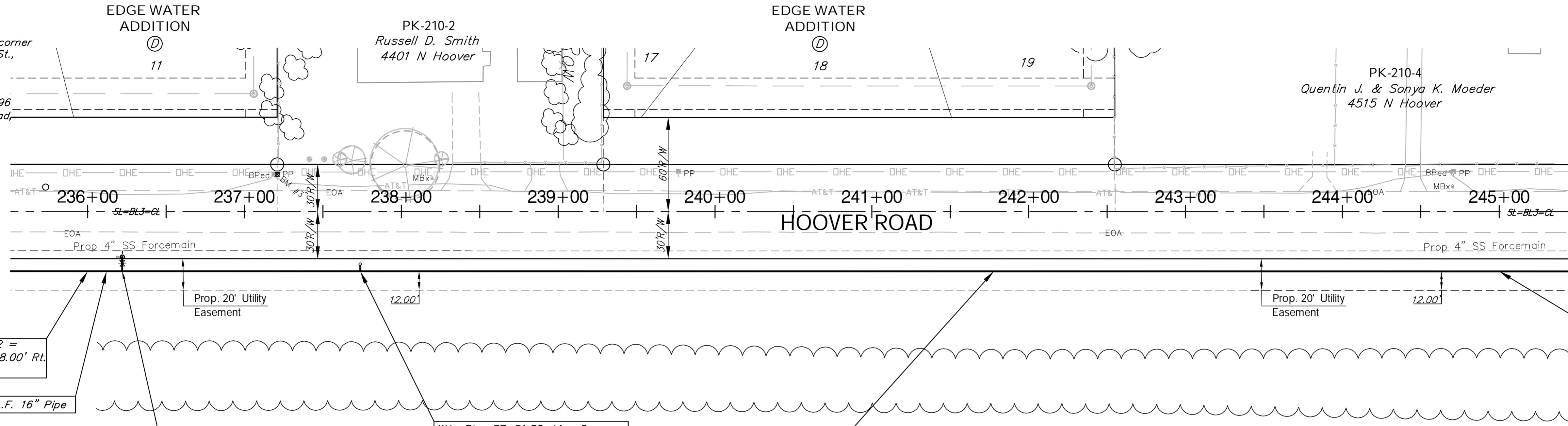
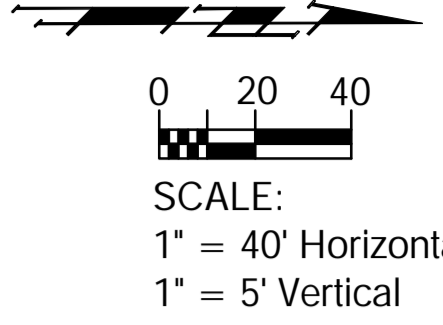
# Benchmarks

BM #1: Hoover and 45th St. N - COW  
Benchmark at NE corner of Intersection,  
10.20' SSE of PP, 58.80' ESE of PP on  
NW corner, 85.50' NE of gas line marker,  
59.00' N of gas line marker, 28.50' E of  
Centerline, 14.50' N of Centerline.  
Elev. = 1335.29 (NGVD 29)

BM #3: 60d Nail in PP at the SE corner  
of exception on W side of Hoover St.,  
South of 45th St. N.  
Elev. = 1335.26

BM #4: COW BM North R/W of K-96  
and West R/W of North Hoover Road,  
6.9' ESE of PP, and 42.5' west of  
center line.  
Elev. = 1333.14 MSL (145.74 City  
Datum)

Reseed 900 L.F. According to General  
Note 13 as Measured Along the Water  
Line from Sta. 35+78 to Sta. 44+78.



W.L. Sta. 35+77.95 Line 2 =  
B.L. 3 Sta. 236+00.00, 38.00' Rt.  
Match Point

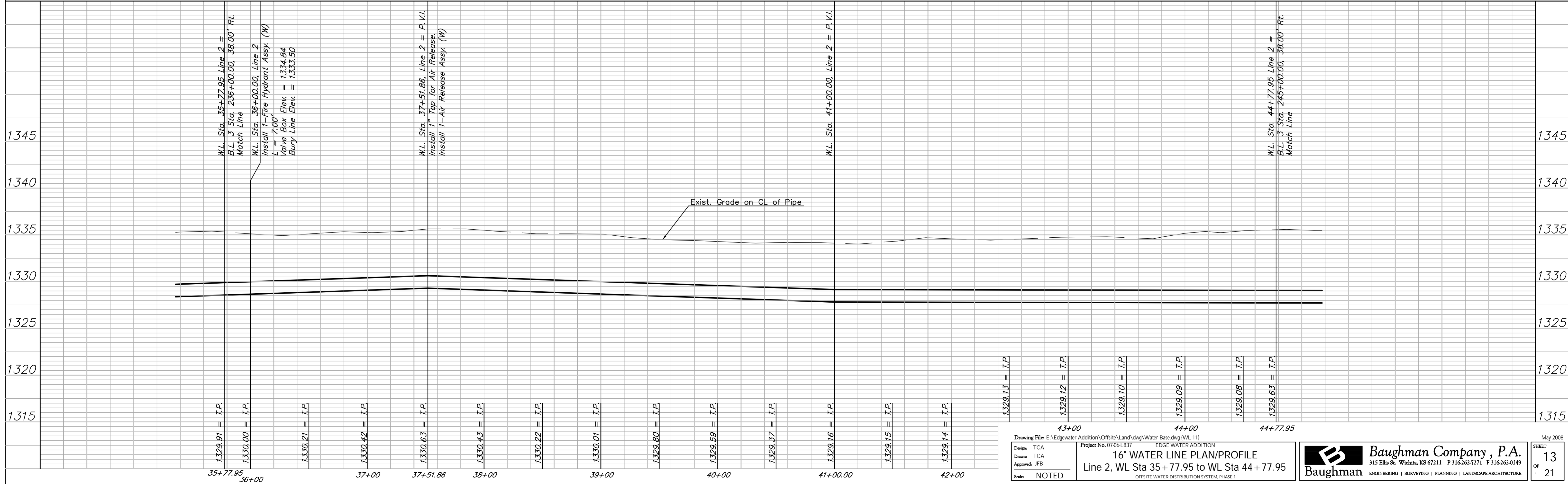
W.L. Sta. 44+77.95 Line 2 =  
B.L. 3 Sta. 245+00.00, 38.00' Rt.  
Match Point

Install 22.05 L.F. 16" Pipe

W.L. Sta. 36+00.00, Line 2 =  
B.L. 3 Sta. 236+22.06, 38.00' Rt.  
Install 1-Fire Hydrant Assy. (W)  
L = 7.00'  
Valve Box Elev. = 1334.84  
Bury Line Elev. = 1333.50

W.L. Sta. 37+51.86, Line 2 =  
B.L. 3 Sta. 237+73.91, 38.00' Rt.  
Install 1" Tap for Air Release.  
Install 1-Air Release Assy. (W)  
See Detail, Sheet 15.  
Top Elev. = 1335.63

Install 877.95 L.F. 16" Pipe



Drawing File: E:\Edgewater Addition\Offsite\Land\dwg\Water Base.dwg (WL 11)  
EDGE WATER ADDITION  
16" WATER LINE PLAN/PROFILE  
Line 2, WL Sta 35+77.95 to WL Sta 44+77.95  
OFFSITE WATER DISTRIBUTION SYSTEM, PHASE 1

**Baughman Company, P.A.**  
315 Ellis St. Wichita, KS 67211 P 316-262-7171 F 316-262-0149  
ENGINEERING | SURVEYING | PLANNING | LANDSCAPE ARCHITECTURE

May 2008  
SHEET 13 OF 21