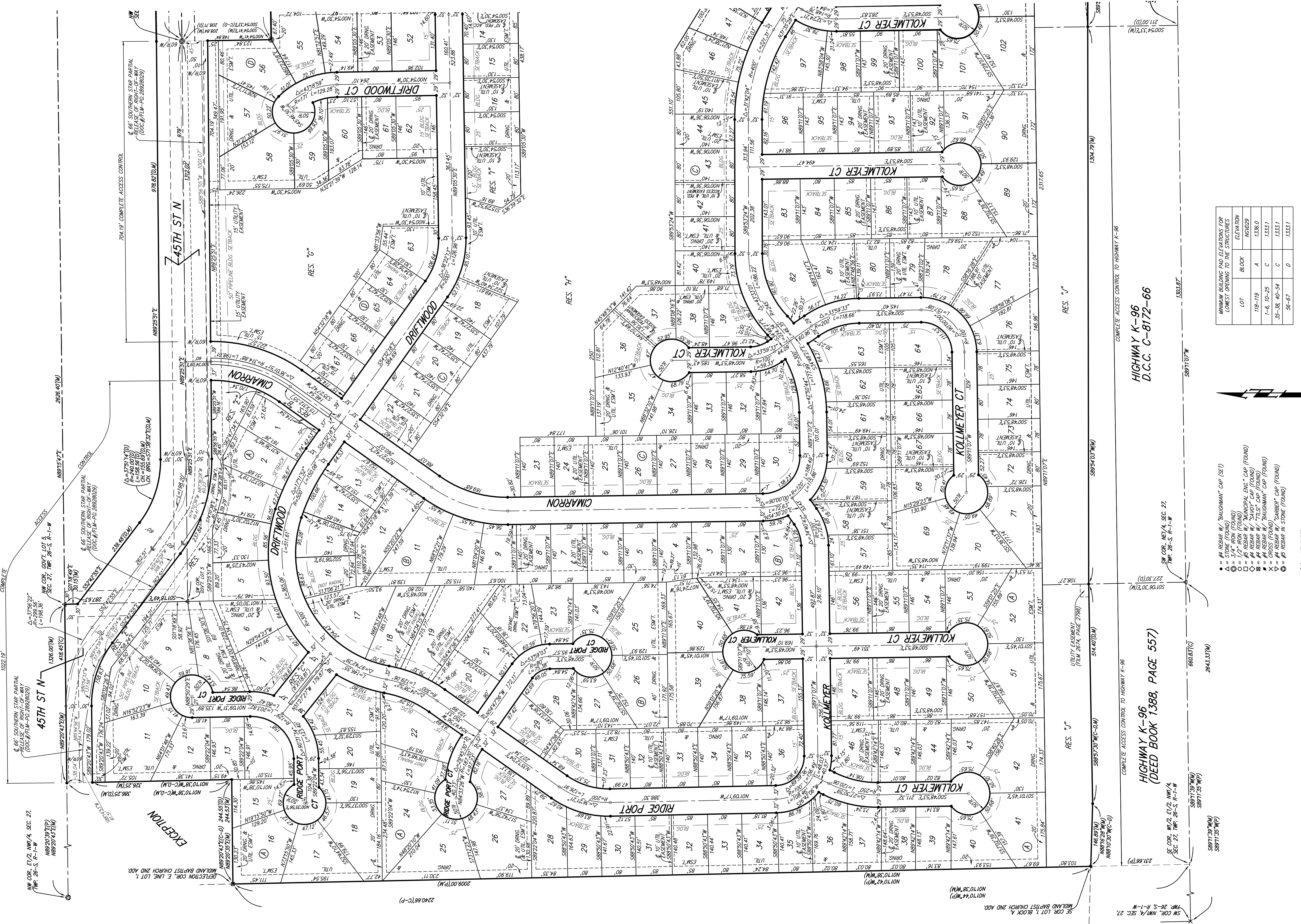


# EDGE WATER ADDITION WICHITA, SEDGWICK COUNTY, KANSAS



MINIMUM BUILDING PAD ELEVATIONS FOR LOWEST OPENINGS TO THE STRUCTURES

LOT	BLOCK	ELEVATION
118-119	A	1336.0
1-6, 10-25	C	1333.1
35-38, 40-54	C	1333.1
56-67	D	1333.1

- ⊙ = #4 REBAR W/ "BAUGHMAN" CAP (SET)
- ⊙ = STONE (FOUND)
- ⊙ = 3/4" IRON (FOUND)
- ⊙ = 1/2" IRON (FOUND)
- ⊙ = #6 REBAR W/ "MUNICIPAL ENG." CAP (FOUND)
- ⊙ = #6 REBAR W/ "TILT" CAP (FOUND)
- ⊙ = #4 REBAR W/ "BAUGHMAN" CAP (FOUND)
- ⊙ = CROSS (FOUND)
- ⊙ = #4 REBAR W/ "BARBER" CAP (FOUND)
- ⊙ = #6 REBAR W/ STONE (FOUND)
- (M) = MEASURED
- (D) = DESCRIBED
- (C) = CALCULATED
- (SM) = CALCULATED PER
- (C-1) = CALCULATED PER
- (C-2) = DESCRIBED INFO
- (C-P) = CALCULATED PER
- (P) = PLATTED INFO

NOTE: KANSAS GAS SUPPLY CORPORATION RIGHTS-OF-WAY MAP (MOG BOOK 558, PAGES 665, 493, AND 493), FIRST ASSIGNED TO CITIES SERVICE GAS COMPANY AND NOW ASSIGNED TO SOUTHERN STAR CENTRAL GAS PIPELINE COMPANY, ARE SHOWN FOR INFORMATION ONLY. THE CITY OF WICHITA, KANSAS, HAS REVIEWED AND APPROVED THE LOCATION OF THE GAS MAINS SHOWN ON THIS PLAN. THE CITY OF WICHITA, KANSAS, HAS REVIEWED AND APPROVED THE LOCATION OF THE GAS MAINS SHOWN ON THIS PLAN. THE CITY OF WICHITA, KANSAS, HAS REVIEWED AND APPROVED THE LOCATION OF THE GAS MAINS SHOWN ON THIS PLAN.

NOTE: A master grading plan for drainage has been developed for this subdivision and is on file with the City of Wichita, Kansas. All drainage easements, utility easements, and other easements shown on this plan are shown in accordance with the approved of the City Engineer of the City of Wichita, Kansas. No obstructions which impede the flow of this drainage system be allowed.