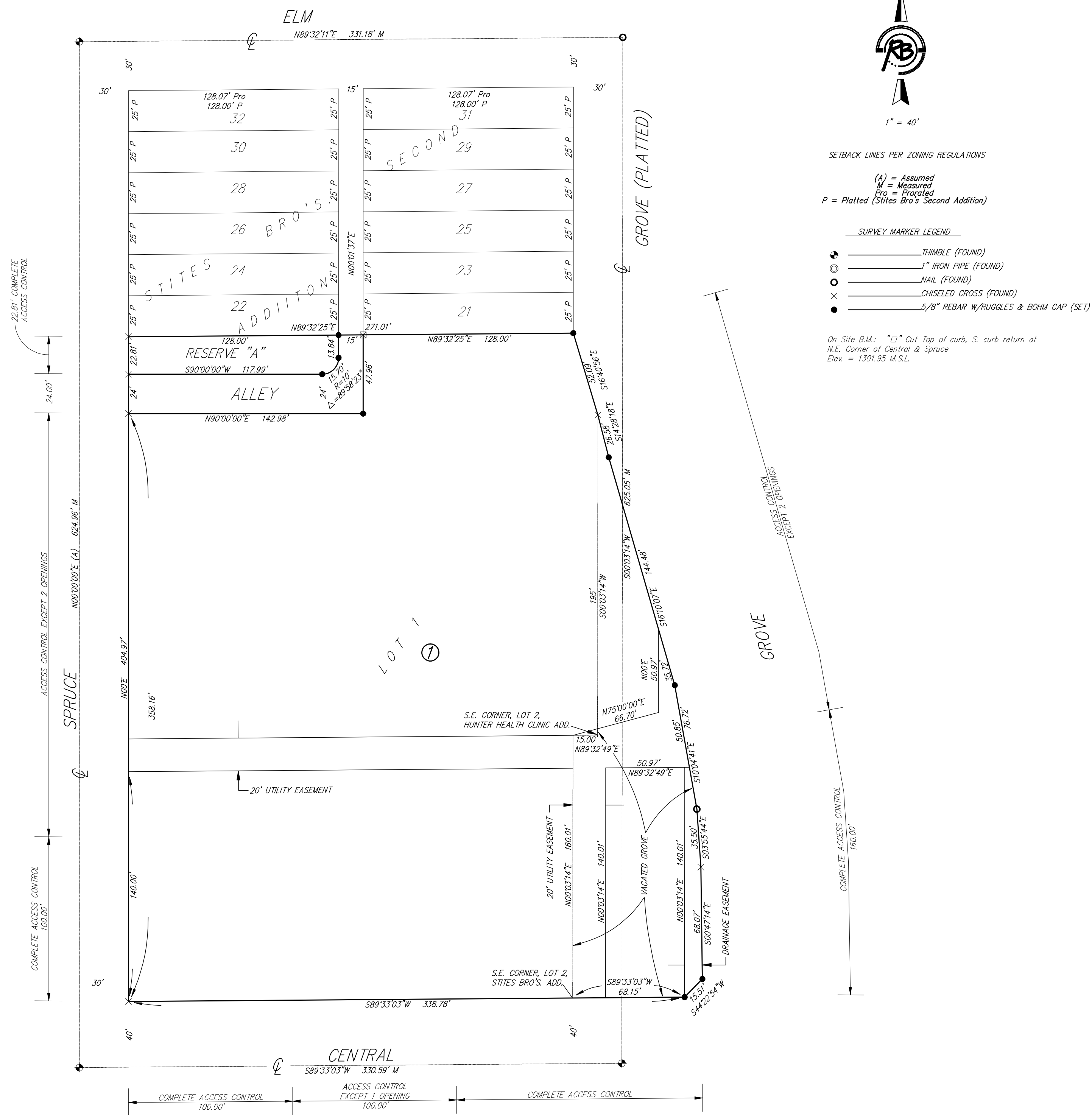


HUNTER HEALTH CLINIC 2ND ADDITION

Wichita, Sedgwick County, Kansas



1" = 40'

SETBACK LINES PER ZONING REGULATIONS

(A) = Assumed
M = Measured
Pro = Plotted (Stites Bro's Second Addition)

SURVEY MARKER LEGEND

- THIMBLE (FOUND)
- 1" IRON PIPE (FOUND)
- NAIL (FOUND)
- ⊗ CHISELED CROSS (FOUND)
- 5/8" REBAR W/RUGGLES & BOHM CAP (SET)

On Site B.M.: "□" Cut Top of curb, S. curb return at N.E. Corner of Central & Spruce
Elev. = 1301.95 M.S.L.

State of Kansas)
Sedgwick County) SS

We, Ruggles & Bohm, P.A., Land Surveyors in aforesaid county and state, do hereby certify that, under the supervision of the undersigned, we have surveyed and platted "HUNTER HEALTH CLINIC 2ND ADDITION", Wichita, Sedgwick County, Kansas, and that the accompanying plat is a true and correct exhibit of the property surveyed, described as follows:

Lots 2 and 4, the west 5.00 feet of the south 72.00 feet of Lot 18, the south 72.00 feet of Lots 20 and 22 on Central, 6 through 20 even on Spruce, Stites Bro's. Second Addition to Wichita, Kansas, Sedgwick County, Kansas, AND Lots 1 and 2, Hunter Health Clinic Addition, Wichita, Sedgwick County, Kansas, AND the Alleys lying between Spruce and Grove and between Central and the the extended north line of Lot 20, in said Stites Bro's. Second Addition, AND that part of Grove described as beginning at the S.E. corner of Lot 2 on Central, in said Stites Bro's. Second Addition; thence N00°03'14"E, along the east line of said Lot 2 and extended north, 160.01 feet to the south line of Lot 2, in said Hunter Health Clinic Addition; thence N89°32'49"E, along said south line, 15.00 feet to the S.E. corner of said Lot 2; thence N00°03'14"E, along the east line of said Lot 2, 195.00 feet to a point of intersection on said east line; thence S14°28'18"E, 26.58 feet; thence S16°10'07"E, 144.48 feet; thence S10°04'41"E, 76.72 feet; thence S03°55'44"E, 35.50 feet; thence S00°47'14"E, 68.07 feet; thence S44°22'54"W, 15.51 feet to the north line of Central; thence S89°33'03"W, along said north line, 68.15 feet to the place of beginning.

All public easements and dedications are hereby vacated by virtue of K.S.A. 12-512(b).

Ruggles & Bohm, P.A.

Thomas C. Ruggles
Land Surveyor

Know all men by these presents that we, the undersigned, have caused the land described in the surveyor's certificate to be platted into a Lot and a Block to be known as "HUNTER HEALTH CLINIC 2ND ADDITION", Wichita, Sedgwick County, Kansas. Access Controls as indicated are hereby granted to the appropriate governing body. Utility Easements are hereby granted for the construction and maintenance of all public utilities. A drainage plan has been developed for this plat; the property shall remain at established grades, or as modified with the approval of the City Engineer, and unobstructed to allow for the conveyance of storm water.

Hunter Health Clinic, Inc.

Susette M. Schwartz
CEO

State of Kansas)
Sedgwick County) SS

The foregoing instrument acknowledged before me, this _____ day of _____, 2007, by Susette M. Schwartz, CEO, on behalf of Hunter Health Clinic, Inc.

Mildred E. Franz
Notary Public

My appointment expires _____

We the undersigned, holders of a mortgage on a portion of the above described property, do hereby consent to this plat of "HUNTER HEALTH CLINIC 2ND ADDITION", Wichita, Sedgwick County, Kansas.

Southwest National Bank

Ron D. Heikes
Senior Vice President

State of Kansas)
Sedgwick County) SS

The foregoing instrument acknowledged before me this _____ day of _____, 2007, by Ron D. Heikes, Senior Vice President of Southwest National Bank, on behalf of the Bank.

Notary Public

My appointment expires _____

This plat of "HUNTER HEALTH CLINIC 2ND ADDITION", Wichita, Sedgwick County, Kansas, has been submitted to and approved by the Wichita-Sedgwick County Metropolitan Area Planning Commission, Wichita, Kansas.

Dated this _____ day of _____, 2007.

Wichita-Sedgwick County Metropolitan Area Planning Commission

Darrell A. Downing
Chair

John L. Schlegel
Secretary

This plat approved and all dedications shown hereon accepted by the

City Council of the City of Wichita, Kansas, this _____ day of _____, 2007.

At the Direction of the City Council

Carlos Mayans
Mayor

Karen Sublett
City Clerk

Reviewed in accordance with K.S.A. 58-2005 on this _____ day of _____, 2007.

Tricia L. Robello, LS #1246
Deputy County Surveyor
Sedgwick County Kansas

Entered on transfer record this _____ day of _____, 2007.

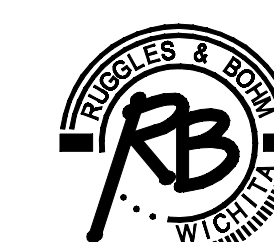
Don Brace
County Clerk

State of Kansas)
Sedgwick County) SS

This is to certify that this plat has been filed for record in the office of the Register of Deeds, this _____ day of _____, 2007, at _____ o'clock _____ M, and is duly recorded.

Bill Meek
Register of Deeds

Tonya Buckingham
Deputy



Ruggles & Bohm, P.A.
Engineering, Surveying, Land Planning

DWG FILE: SURVEY BASE
PROJECT NO. 2813P
JANUARY 4, 2006

924 North Main (316) 264-8008
Wichita, Kansas 67203 (316) 264-4621 fax
www.rbkansas.com E-mail: info@rbkansas.com