

WATER DISTRIBUTION SYSTEM IMPROVEMENTS

to serve

WOODLAND NORTH

CITY OF WICHITA, KANSAS

Jim Armour, P.E., City Engineer

Project Number
448-90359

O.C.A. Number
735420

GENERAL NOTES:

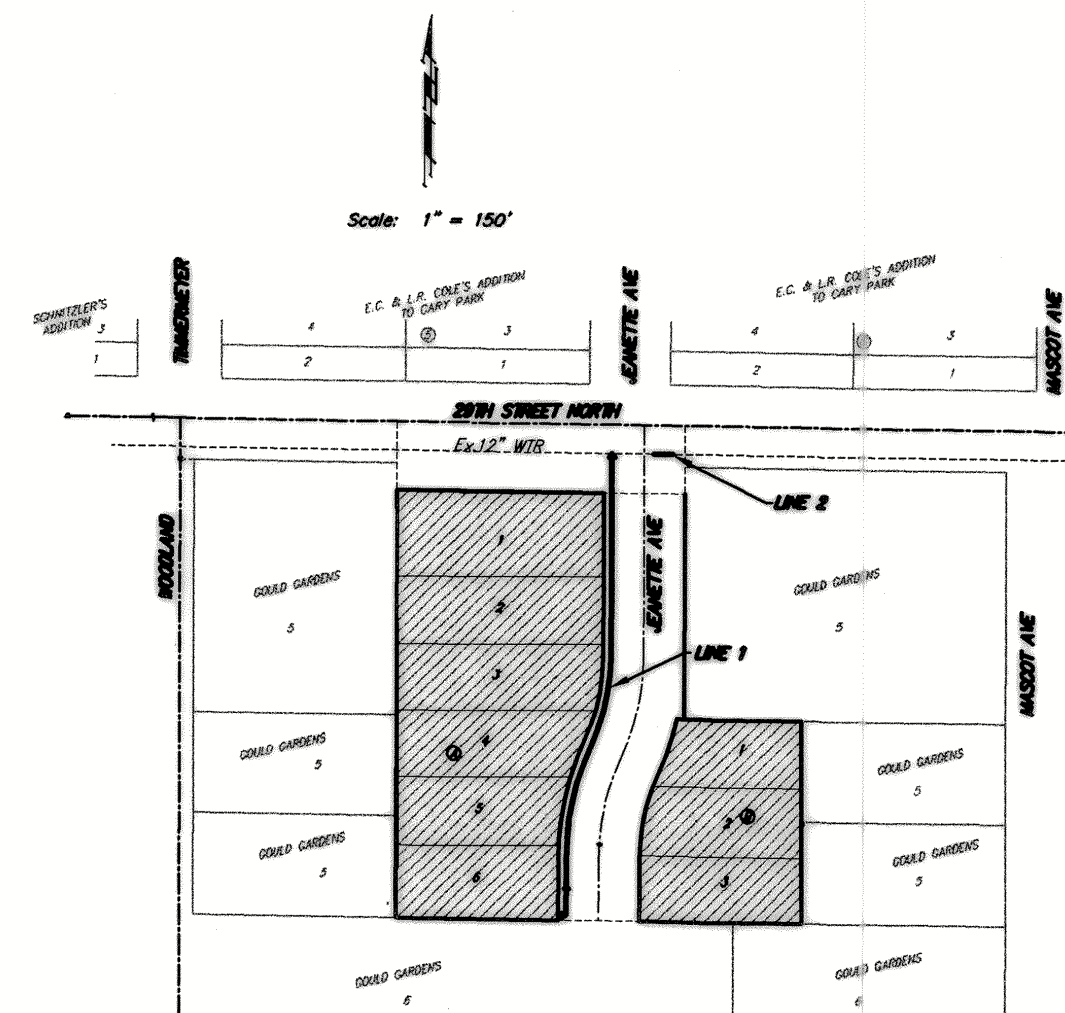
- Contractor will be required to provide notice to utility companies a minimum of forty-eight (48) hours prior to any excavation, as follows:

Kansas One-Call 687-2470

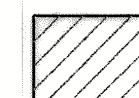
Contractor must notify the following in case of an emergency:

| | |
|------------------------------------|----------------|
| Cox Communications | 262-4270 |
| Kansas Gas Service | 1-888-482-4950 |
| Westar Energy | 383-8650 |
| Aquila Energy | 1-800-303-0357 |
| AT&T | 1-800-431-1411 |
| City of Wichita Water Dept. | 268-4563 |
| City of Wichita Sewer Maint. | 268-4024 |
| City of Wichita Storm Sewer Maint. | 268-4090 |
| City of Wichita Traffic Maint. | 268-4034 |
| Conoco Phillips Pipeline | 1-877-267-2290 |
| Southern Star Pipeline | 529-6600 |
| Kinder Morgan Pipeline | 1-888-844-5658 |

- Underground utility service lines and overhead utility pole lines are to be adjusted as necessary by others prior to construction unless the plans specifically call for their adjustment by the Contractor or unless the plans specifically identify a utility to be adjusted by its owner during construction. Existing utilities and their location, as shown on the plans, represent the best information obtainable for design. The Contractor will be required to work around existing utilities within the right-of-way which do not conflict with proposed construction.
- Trees and shrubs in public right-of-way which are in direct conflict with proposed new construction shall be removed by the Contractor with the Engineer's approval. Trees and shrubs which are not in direct conflict with proposed new construction shall be saved and protected from damage.
- The Contractor shall be responsible for preserving property irons. The Contractor will be required to re-establish any property irons which are damaged or destroyed by his construction operations. Such irons shall be re-established by a licensed land surveyor in accordance with state laws.
- The Contractor shall not start work on the project until the Project Inspector is assigned to the project and is present on the sight. Any work done without inspection will be required to be uncovered for inspection.
- All areas disturbed during construction shall be seeded at 300 lbs./acre with Rye Grass immediately following construction in that area. Contractor shall prepare ground per City Specifications.
- The Contractor shall adjust water valve boxes and fire hydrants as directed by the Engineer at the price bid for said adjustments. The Water Department shall field locate water valves one time during construction when requested by Contractor. It shall be the Contractor's responsibility to preserve such field locations during the construction process. Water valves, water valve boxes or fire hydrants damaged during construction shall be repaired by the Contractor at his own expense.
- All water mains and appurtenances shall be installed in accordance with City of Wichita, Kansas Standard Specifications for Water Main Installations No. 14533.
- Opening and closing of water valves shall be done slowly to prevent damage to the water distributions system from water hammer. All valves closed by the contractor must be reopened as new construction permits. Project inspector must ascertain that any valve closed by the Contractor is reopened. Contractor will be permitted to operate water valves only when the project inspector assigned to the project is present.



BENEFIT DISTRICT

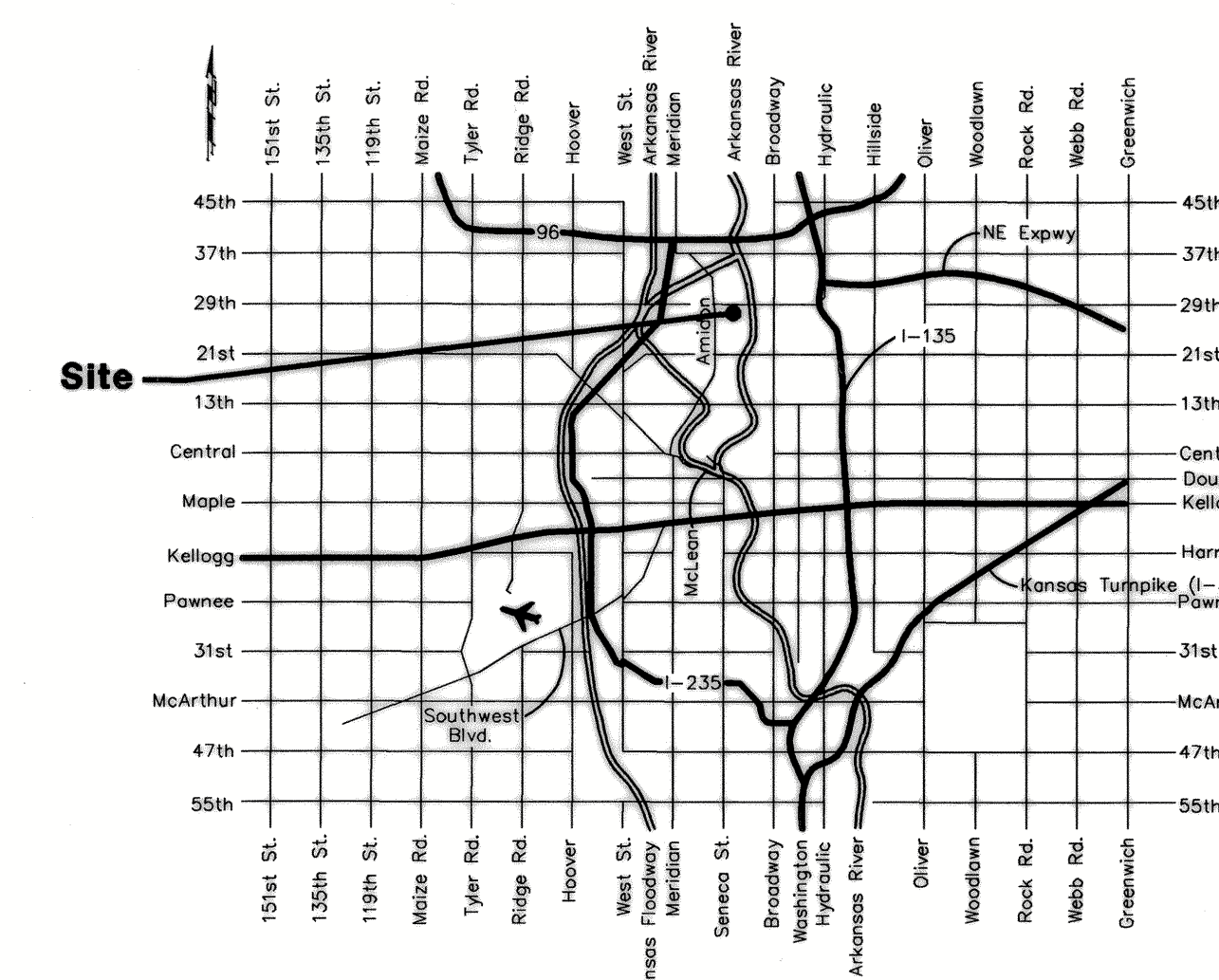


SHEET INDEX

| | |
|-----------------------|-----|
| Title Sheet | 1 |
| Standard Water Detail | 2 |
| Lines 1 & 2 | 3 |
| Erosion Control BMPs | 4-7 |
| Plat | 8 |

BENCHMARK

CITY OF WICHITA BENCHMARK AT THE
NE CORNER OF ARKANSAS AND 29TH
ST NORTH
ELEV. = 1316.81 NGVD29



VICINITY MAP



Baughman Company, P.A. 315 Ellis St. Wichita, KS 67211 P 316-262-7271 F 316-262-0149
ENGINEERING | SURVEYING | PLANNING | LANDSCAPE ARCHITECTURE