

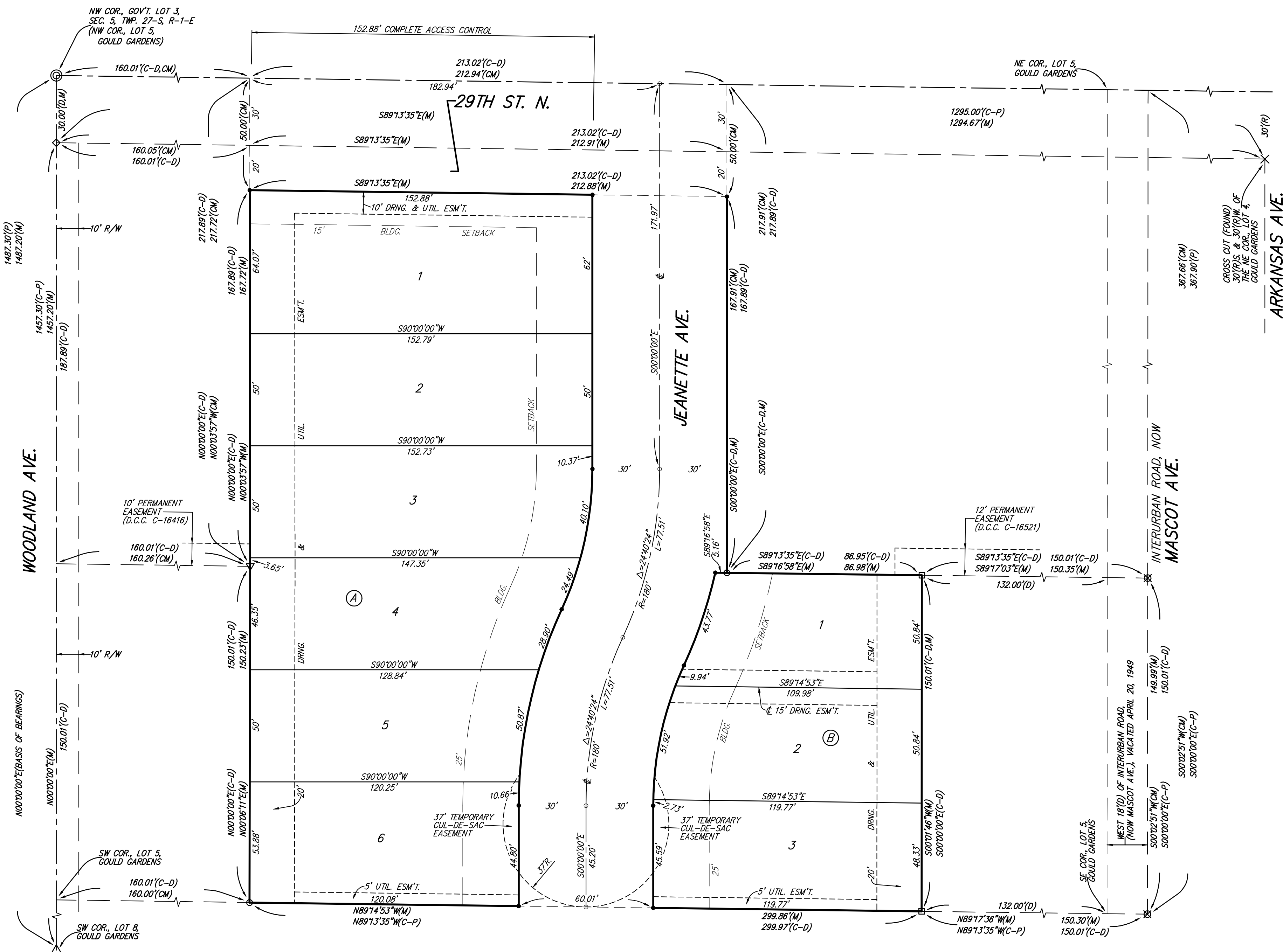
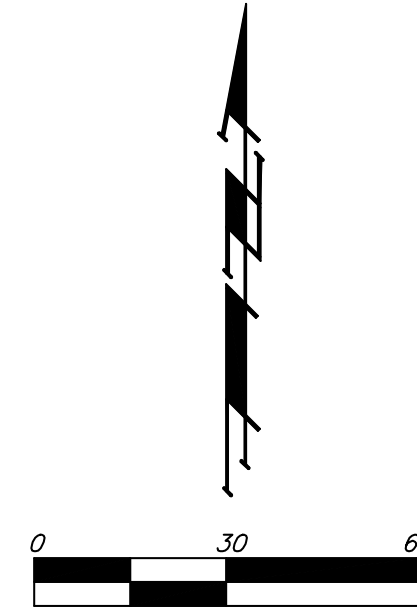
WOODLAND NORTH

WICHITA, SEDGWICK COUNTY, KANSAS

- #4 REBAR W/ "BAUGHMAN" CAP (SET)
- ⊗ = 1/2" IRON PIPE (FOUND)
- = "P-K" NAIL (FOUND)
- ⊙ = 1/2" IRON PIPE IN THIMBLE (FOUND)
- ⊕ = #5 REBAR IN THIMBLE (FOUND)
- × = CROSS CUT (FOUND)
- = #4 REBAR W/ "LS850" CAP (FOUND)
- ▽ = 3/4" IRON PIPE (FOUND)
- ◇ = MAG NAIL (FOUND)

- (M) = MEASURED
- (P) = PLATTED
- (D) = DESCRIBED
- (R) = RECORD
- (C) = CALCULATED PER MEASURED INFO
- (C-P) = CALCULATED PER PLATTED INFO
- (C-D) = CALCULATED PER DESCRIBED INFO

NOTE:
ALL LOTS WITHIN WOODLAND NORTH SHALL HAVE A 5 FOOT SIDE YARD BUILDING SETBACK.



NOTE:
A MASTER GRADING PLAN FOR DRAINAGE HAS BEEN DEVELOPED FOR THIS SUBDIVISION AND IS ON FILE WITH THE CITY OF WICHITA, KANSAS. ALL DRAINAGE EASEMENTS, RIGHTS-OF-WAY, OR RESERVES SHALL REMAIN AT ESTABLISHED GRADES OR AS MODIFIED WITH THE APPROVAL OF THE CITY ENGINEERS OF THE CITY OF WICHITA, KANSAS. NO OBSTRUCTIONS WHICH IMPEDE THE FLOW OF THIS DRAINAGE SYSTEM SHALL BE ALLOWED.

State of Kansas) SS We, Baughman Company, P.A., Surveyors in Sedgwick County) do hereby certify that we have surveyed and platted "WOODLAND NORTH", Wichita, Sedgwick County, Kansas and that the accompanying plat is a true and correct exhibit of the property surveyed, described as the east 213 feet of the west 373 feet of Lot 5, except the south 150 feet, and except the north 30 feet thereof, Gould Gardens, Sedgwick County, Kansas, together with the south 150 feet of Lot 5, except the west 160 feet and except the east 132 feet thereof, Gould Gardens, Sedgwick County, Kansas.

Existing public easements and dedications being vacated by virtue of K.S.A. 12-512(b).

All being situated in Government Lot 3, Sec. 5, Twp. 27-S, R-1-E of the 6th P.M., Sedgwick County, Kansas.

Baughman Company, P.A.

This plat of "WOODLAND NORTH", Wichita, Sedgwick County, Kansas has been submitted to and approved by the Wichita-Sedgwick County Metropolitan Area Planning Commission, Wichita, Kansas.

Dated this _____ day of _____, 2015.
Wichita-Sedgwick County Metropolitan Area Planning Commission

_____, Chair
Darrell A. Downing

_____, Secretary
John L. Schlegel

_____, Surveyor
Michael G. Conrey

This plat approved and all dedications shown hereon accepted by the City Council of the City of Wichita, Kansas, this _____ day of _____, 2015.

_____, Mayor
Carl Brewer

_____, City Clerk
Karen Sublett

Know all men by these presents that we, the undersigned, have caused the land in the surveyors certificate to be platted into Lots, Blocks, and Streets, to be known as "WOODLAND NORTH", Wichita, Sedgwick County, Kansas. The utility easements are hereby granted as indicated for the construction and maintenance of all public utilities. The drainage and utility easements are hereby granted as indicated for drainage purposes and for the construction and maintenance of all public utilities. The drainage easement is hereby granted as indicated for drainage purposes. The temporary cul-de-sac easement on Jeanette Ave. shall expire at such time as Jeanette Ave. is extended further south or terminated as a permanent cul-de-sac. The streets are hereby dedicated to and for the use of the public. Access controls shall be as depicted on the face of the plat and are hereby granted to the City of Wichita, Kansas.

Mennonite Housing Rehabilitation Services, Inc.,
a Kansas corporation

_____, President
Andrew L. Bias

Reviewed in accordance with K.S.A. 58-2005 on this _____ day of _____, 2015.

State of Kansas) SS The foregoing instrument acknowledged before me, this _____ day of _____, 2015, by Andrew L. Bias, President of the Mennonite Housing Rehabilitation Services, Inc., a Kansas corporation, on behalf of the corporation.

_____, Notary Public

My App't. Exp. _____

Entered on transfer record this _____ day of _____, 2015.

_____, County Clerk
Don Brace

We the undersigned holders of a mortgage on the above described property, do hereby consent to this plat of "WOODLAND NORTH", Wichita, Sedgwick County, Kansas.

Emprise Bank

_____, (Title)

State of Kansas) SS This is to certify that this plat has been filed for record in the office of the Register of Deeds, this _____ day of _____, 2015, at _____ o'clock _____ M.; and is duly recorded.

_____, Register of Deeds
Bill Meek

State of Kansas) SS The foregoing instrument acknowledged before me, this _____ day of _____, 2015, by _____, of Emprise Bank, on behalf of the bank.

_____, Notary Public

My App't. Exp. _____

_____, Deputy
Tonya Buckingham