

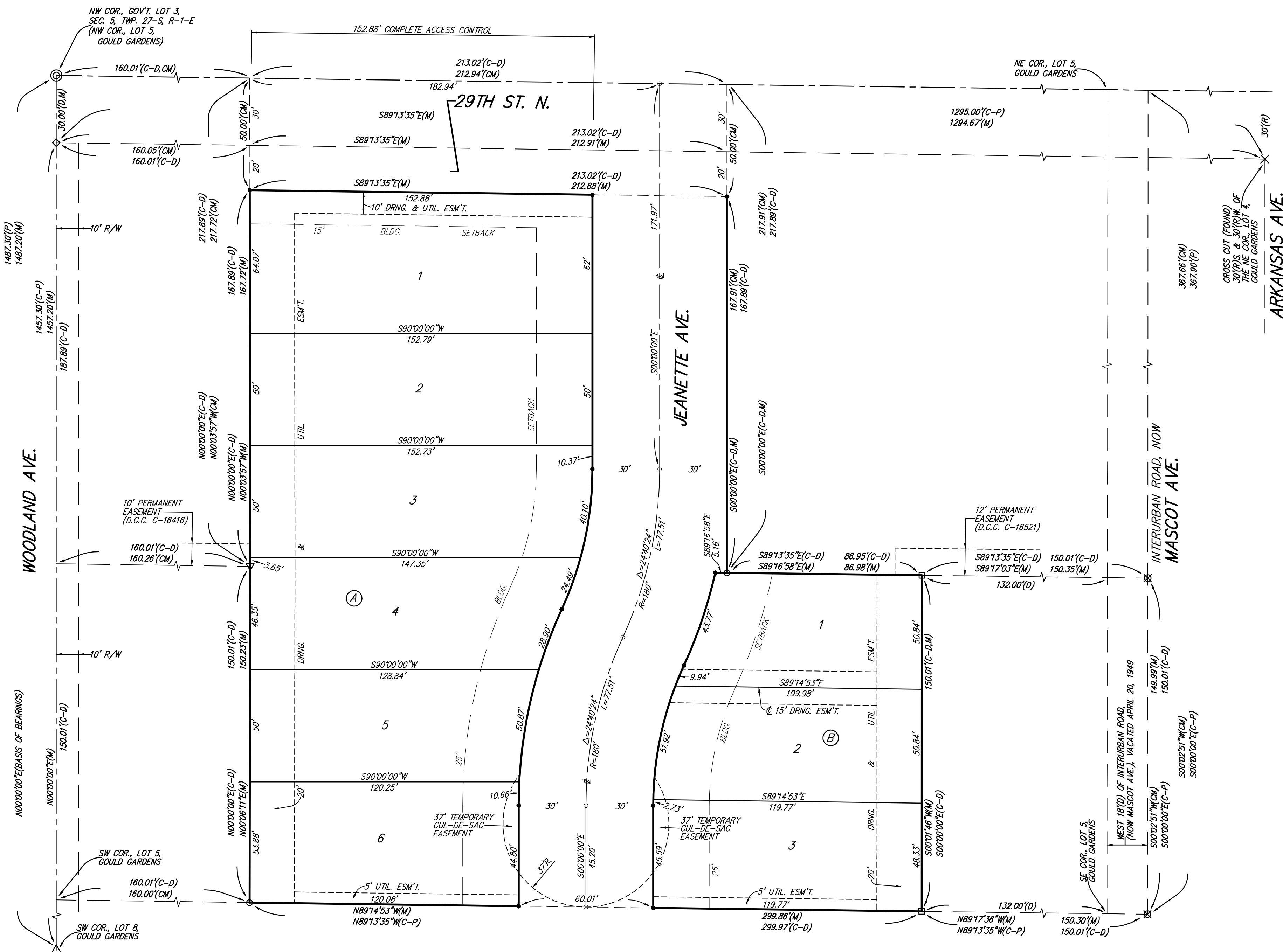
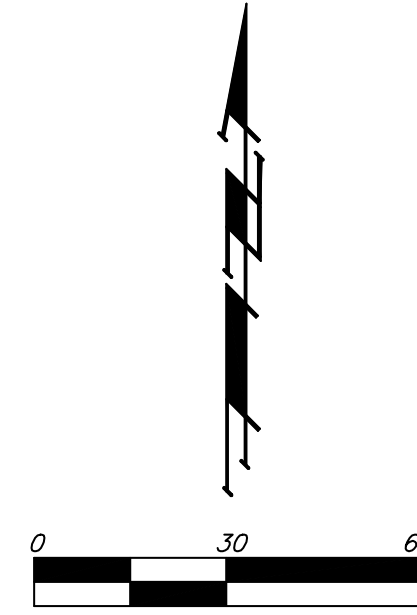
# WOODLAND NORTH

## WICHITA, SEDGWICK COUNTY, KANSAS

- #4 REBAR W/ "BAUGHMAN" CAP (SET)
- ⊗ = 1/2" IRON PIPE (FOUND)
- = "P-K" NAIL (FOUND)
- ⊙ = 1/2" IRON PIPE IN THIMBLE (FOUND)
- ⊕ = #5 REBAR IN THIMBLE (FOUND)
- × = CROSS CUT (FOUND)
- = #4 REBAR W/ "LS850" CAP (FOUND)
- ▽ = 3/4" IRON PIPE (FOUND)
- ◇ = MAG NAIL (FOUND)

- (M) = MEASURED
- (P) = PLATTED
- (D) = DESCRIBED
- (R) = RECORD
- (C) = CALCULATED PER MEASURED INFO
- (C-P) = CALCULATED PER PLATTED INFO
- (C-D) = CALCULATED PER DESCRIBED INFO

NOTE:  
ALL LOTS WITHIN WOODLAND NORTH SHALL HAVE A 5 FOOT SIDE YARD BUILDING SETBACK.



NOTE:  
A MASTER GRADING PLAN FOR DRAINAGE HAS BEEN DEVELOPED FOR THIS SUBDIVISION AND IS ON FILE WITH THE CITY OF WICHITA, KANSAS. ALL DRAINAGE EASEMENTS, RIGHTS-OF-WAY, OR RESERVES SHALL REMAIN AT ESTABLISHED GRADES OR AS MODIFIED WITH THE APPROVAL OF THE CITY ENGINEERS OF THE CITY OF WICHITA, KANSAS. NO OBSTRUCTIONS WHICH IMPEDE THE FLOW OF THIS DRAINAGE SYSTEM SHALL BE ALLOWED.

State of Kansas) SS We, Baughman Company, P.A., Surveyors in Sedgwick County and state do hereby certify that we have surveyed and platted "WOODLAND NORTH", Wichita, Sedgwick County, Kansas and that the accompanying plat is a true and correct exhibit of the property surveyed, described as the east 213 feet of the west 373 feet of Lot 5, except the south 150 feet, and except the north 30 feet thereof, Gould Gardens, Sedgwick County, Kansas, together with the south 150 feet of Lot 5, except the west 160 feet and except the east 132 feet thereof, Gould Gardens, Sedgwick County, Kansas.

Existing public easements and dedications being vacated by virtue of K.S.A. 12-512(b).

All being situated in Government Lot 3, Sec. 5, Twp. 27-S, R-1-E of the 6th P.M., Sedgwick County, Kansas.

Baughman Company, P.A.

This plat of "WOODLAND NORTH", Wichita, Sedgwick County, Kansas has been submitted to and approved by the Wichita-Sedgwick County Metropolitan Area Planning Commission, Wichita, Kansas.

Dated this \_\_\_\_\_ day of \_\_\_\_\_, \_\_\_\_\_  
Wichita-Sedgwick County Metropolitan Area Planning Commission

\_\_\_\_\_, Chair  
Darrell A. Downing

\_\_\_\_\_, Secretary  
John L. Schlegel

\_\_\_\_\_, Surveyor  
Michael G. Conrey

This plat approved and all dedications shown hereon accepted by the City Council of the City of Wichita, Kansas, this \_\_\_\_\_ day of \_\_\_\_\_, \_\_\_\_\_.

\_\_\_\_\_, Mayor  
Carl Brewer

\_\_\_\_\_, City Clerk  
Karen Sublett

Know all men by these presents that we, the undersigned, have caused the land in the surveyors certificate to be platted into Lots, Blocks, and Streets, to be known as "WOODLAND NORTH", Wichita, Sedgwick County, Kansas. The utility easements are hereby granted as indicated for the construction and maintenance of all public utilities. The drainage and utility easements are hereby granted as indicated for drainage purposes and for the construction and maintenance of all public utilities. The drainage easement is hereby granted as indicated for drainage purposes. The temporary cul-de-sac easement on Jeanette Ave. shall expire at such time as Jeanette Ave. is extended further south or terminated as a permanent cul-de-sac. The streets are hereby dedicated to and for the use of the public. Access controls shall be as depicted on the face of the plat and are hereby granted to the City of Wichita, Kansas.

Reviewed in accordance with K.S.A. 58-2005 on this \_\_\_\_\_ day of \_\_\_\_\_, \_\_\_\_\_.

Mennonite Housing Rehabilitation Services, Inc.,  
a Kansas corporation

\_\_\_\_\_, President  
Andrew L. Bias

Tricia L. Robello, L.S. #1246  
Deputy County Surveyor  
Sedgwick County, Kansas

State of Kansas) SS The foregoing instrument acknowledged before me, this \_\_\_\_\_ day of \_\_\_\_\_, \_\_\_\_\_, by Andrew L. Bias, President of the Mennonite Housing Rehabilitation Services, Inc., a Kansas corporation, on behalf of the corporation.

\_\_\_\_\_, Notary Public

Entered on transfer record this \_\_\_\_\_ day of \_\_\_\_\_, \_\_\_\_\_.

My App't. Exp. \_\_\_\_\_

\_\_\_\_\_, County Clerk  
Don Brace

We the undersigned holders of a mortgage on the above described property, do hereby consent to this plat of "WOODLAND NORTH", Wichita, Sedgwick County, Kansas.

Emprise Bank

State of Kansas) SS This is to certify that this plat has been filed for record in the office of the Register of Deeds, this \_\_\_\_\_ day of \_\_\_\_\_, \_\_\_\_\_ at \_\_\_\_\_ o'clock \_\_\_\_\_ M.; and is duly recorded.

\_\_\_\_\_, Register of Deeds  
Bill Meek

State of Kansas) SS The foregoing instrument acknowledged before me, this \_\_\_\_\_ day of \_\_\_\_\_, \_\_\_\_\_, by \_\_\_\_\_, \_\_\_\_\_ of Emprise Bank, on behalf of the bank.

\_\_\_\_\_, Deputy  
Tonya Buckingham

\_\_\_\_\_, Notary Public

My App't. Exp. \_\_\_\_\_

**B** Baughman Company, P.A.  
315 Ellis St. Wichita, KS 67211 P 316-262-7171 F 316-262-0149  
Baughman ENGINEERING | SURVEYING | PLANNING | LANDSCAPE ARCHITECTURE  
E:\PLAT\WOODLAND NORTH\DWG\29TH&WOODLANDE.DWG\MGC