

Benchmarks

BM #1: Hoover and 45th St. N - COW
 Benchmark at NE corner of Intersection, 10.20' SSE of PP, 58.80' ESE of PP on NW corner, 85.50' NE of gas line marker, 59.00' N of gas line marker, 28.50' E of Centerline, 14.50' N of Centerline.
 Elev. = 1335.29 (NGVD 29)

BM #2: small RR spike in 3rd PP W of Hoover St. on the N side of 45th St. N.
 Elev. = 1337.68

W.L. Sta. 4+35.25, Begin Line 1 =
 B.L. 1 Sta. 5+17.89, 37.50' Lt.
 Begin Construction 16" Water Line 1
 Install 1-Fire Hydrant Assy. (SW)
 L = 4.00'
 Valve Box Elev. = 1338.1
 Bury Line Elev. = 1338.25
 Install 1-16" Anch. Valve Assy. (NW)
 (Butterfly Valve)
 Valve Box Elev. = 1338.1
 Install 5.00 L.F. 16" DICL (NW)
 Install 1-16" MJ Cap (NW)

W.L. Sta. 6+53.82 Line 1 =
 B.L. 1 Sta. 7+36.43, 38.67' Lt.
 Deflect Pipe 4' 00' Lt.

W.L. Sta. 6+33.82 Line 1 =
 B.L. 1 Sta. 7+16.46, 37.50' Lt.
 Deflect Pipe 3' 21' Lt.

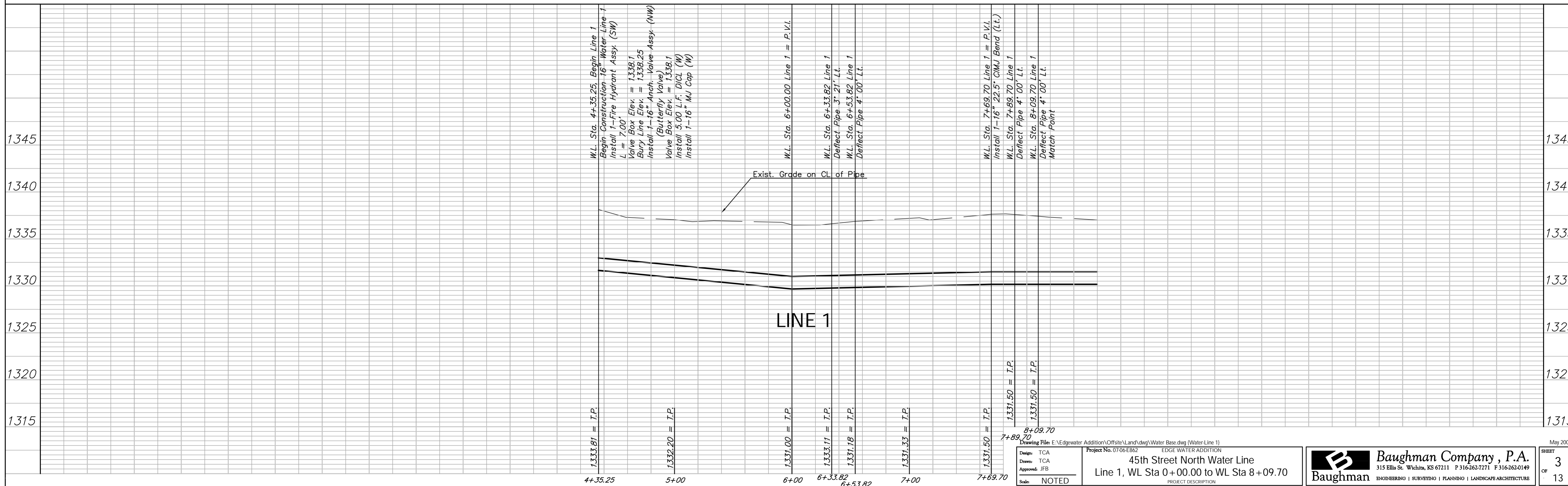
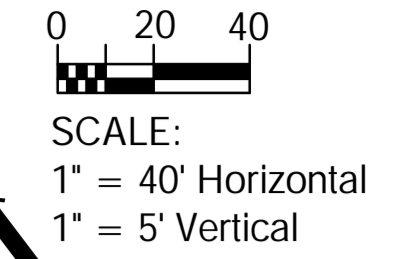
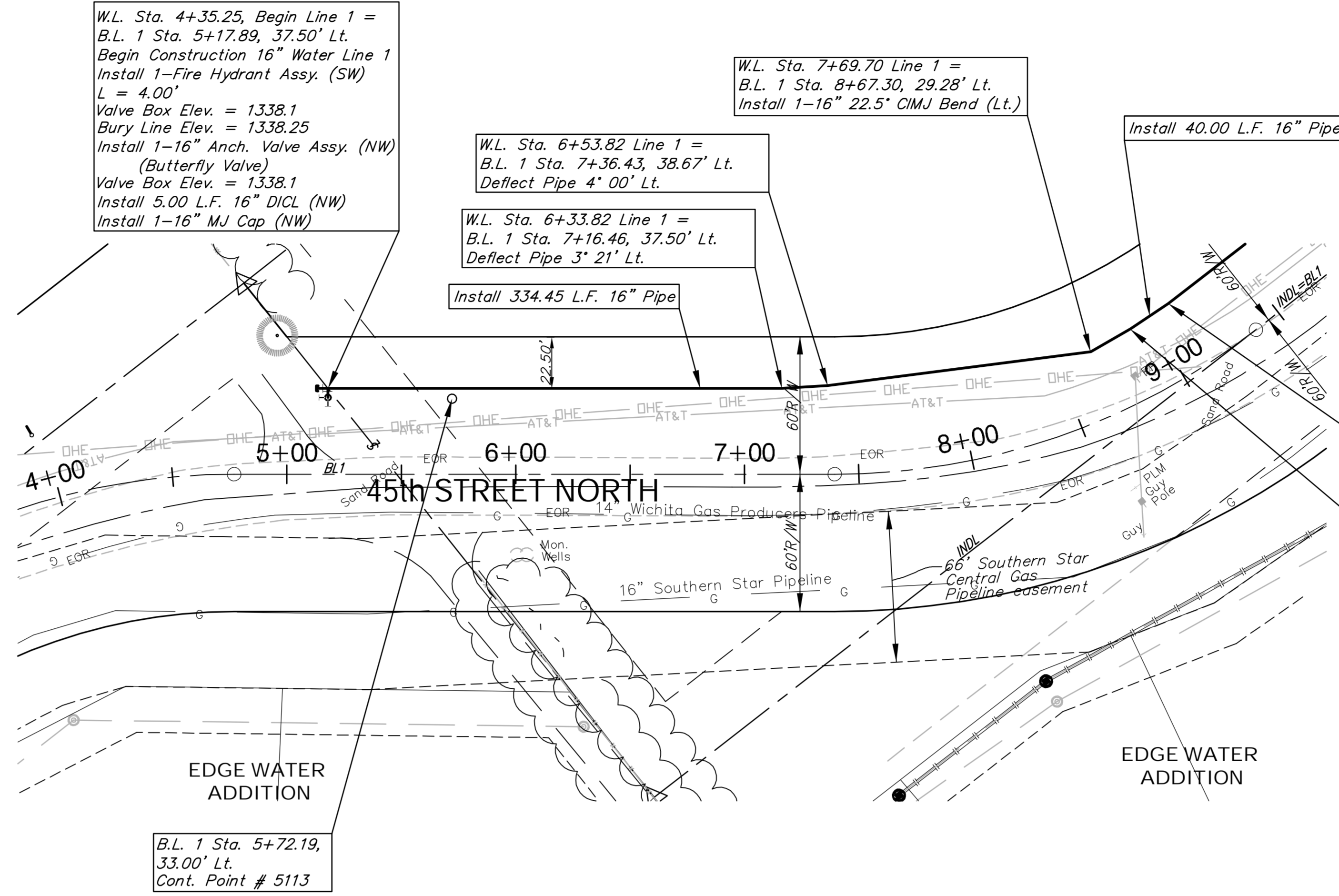
Install 334.45 L.F. 16" Pipe

W.L. Sta. 7+69.70 Line 1 =
 B.L. 1 Sta. 8+67.30, 29.28' Lt.
 Install 1-16" 22.5' CIMJ Bend (Lt.)

Install 40.00 L.F. 16" Pipe

W.L. Sta. 8+09.70 Line 1 =
 B.L. 1 Sta. 9+11.76, 31.50' Lt.
 Deflect Pipe 4' 00' Lt.
 Match Point

W.L. Sta. 7+89.70 Line 1 =
 B.L. 1 Sta. 8+89.48, 30.43' Lt.
 Deflect Pipe 4' 00' Lt.



W.L. Sta. 4+35.25, Begin Line 1
 Begin Construction 16" Water Line 1
 L = 7.00'
 Install 1-Fire Hydrant Assy. (SW)
 Valve Box Elev. = 1338.1
 Bury Line Elev. = 1338.25
 Install 1-16" Anch. Valve Assy. (NW)
 (Butterfly Valve)
 Valve Box Elev. = 1338.1
 Install 5.00 L.F. DICL (W)
 Install 1-16" MJ Cap (W)

W.L. Sta. 6+00.00 Line 1 = P.V.I.

W.L. Sta. 6+33.82 Line 1
 Deflect Pipe 3' 21' Lt.
 W.L. Sta. 6+53.82 Line 1
 Deflect Pipe 4' 00' Lt.

W.L. Sta. 7+69.70 Line 1 = P.V.I.
 Install 1-16" 22.5' CIMJ Bend (Lt.)
 W.L. Sta. 7+89.70 Line 1
 Deflect Pipe 4' 00' Lt.
 W.L. Sta. 8+09.70 Line 1
 Deflect Pipe 4' 00' Lt.
 Match Point

1333.81 = T.P.
 1332.20 = T.P.
 1331.00 = T.P.
 1333.11 = T.P.
 1331.18 = T.P.
 1331.53 = T.P.
 1331.50 = T.P.
 1331.50 = T.P.
 1331.50 = T.P.

4+35.25 5+00 6+00 6+33.82 6+53.82 7+00 7+69.70 7+89.70 8+09.70

Design: TCA
 Drawn: TCA
 Approved: JFB
 Scale: NOTED

Project No. 0706EB62

45th Street North Water Line
 Line 1, WL Sta 0+00.00 to WL Sta 8+09.70

PROJECT DESCRIPTION

Baughman Company, P.A.
 315 Ellis St., Wichita, KS 67211 P 316-262-7171 F 316-262-0149
 ENGINEERING | SURVEYING | PLANNING | LANDSCAPE ARCHITECTURE