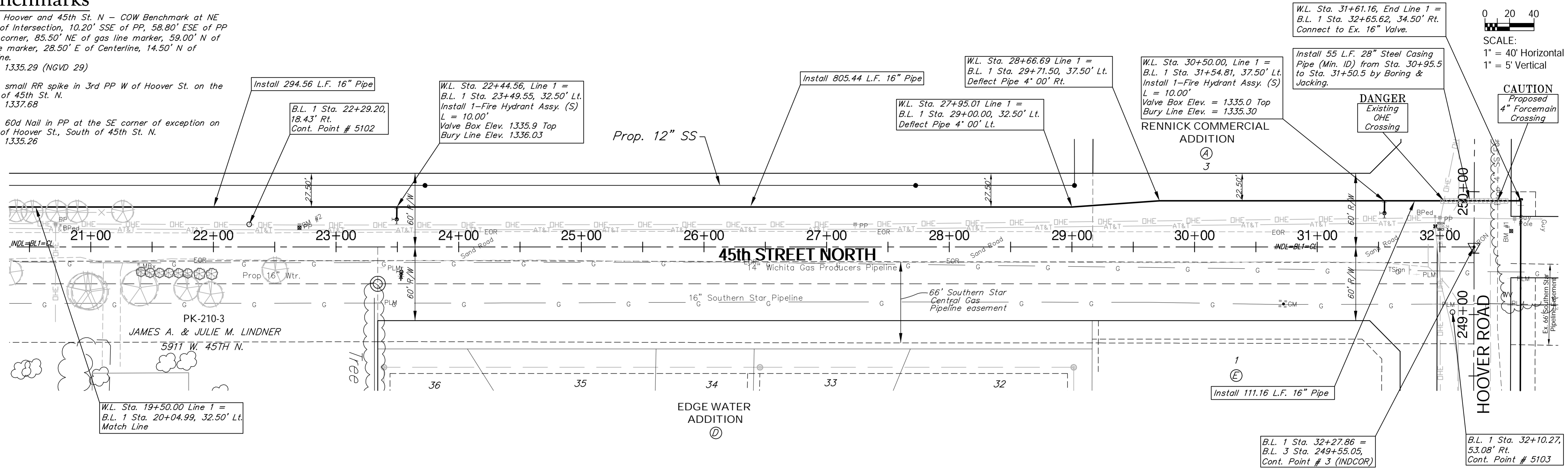


# Benchmarks

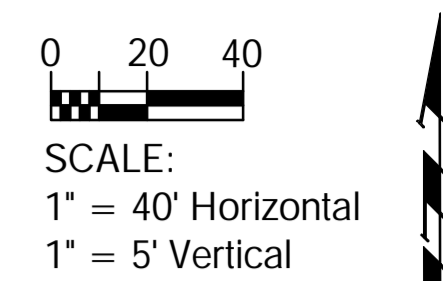
BM #1: Hoover and 45th St. N - COW Benchmark at NE corner of Intersection, 10.20' SSE of PP, 58.80' ESE of PP on NW corner, 85.50' NE of gas line marker, 59.00' N of gas line marker, 28.50' E of Centerline, 14.50' N of Centerline.  
Elev. = 1335.29 (NGVD 29)

BM #2: small RR spike in 3rd PP W of Hoover St. on the N side of 45th St. N.  
Elev. = 1337.68

BM #3: 60d Nail in PP at the SE corner of exception on W side of Hoover St., South of 45th St. N.  
Elev. = 1335.26



W.L. Sta. 31+61.16, End Line 1 = B.L. 1 Sta. 32+65.62, 34.50' Rt. Connect to Ex. 16" Valve.



**CAUTION**  
Proposed 4" Forcemain Crossing

**DANGER**  
Existing OHE Crossing

W.L. Sta. 30+50.00, Line 1 = B.L. 1 Sta. 31+54.81, 37.50' Lt. Install 1-Fire Hydrant Assy. (S) L = 10.00' Valve Box Elev. = 1335.0 Top Bury Line Elev. = 1335.30

W.L. Sta. 28+66.69 Line 1 = B.L. 1 Sta. 29+71.50, 32.50' Lt. Deflect Pipe 4' 00' Rt.

W.L. Sta. 27+95.01 Line 1 = B.L. 1 Sta. 29+00.00, 32.50' Lt. Deflect Pipe 4' 00' Lt.

W.L. Sta. 22+44.56, Line 1 = B.L. 1 Sta. 23+49.55, 32.50' Lt. Install 1-Fire Hydrant Assy. (S) L = 10.00' Valve Box Elev. 1335.9 Top Bury Line Elev. 1336.03

B.L. 1 Sta. 22+29.20, 18.43' Rt. Cont. Point # 5102

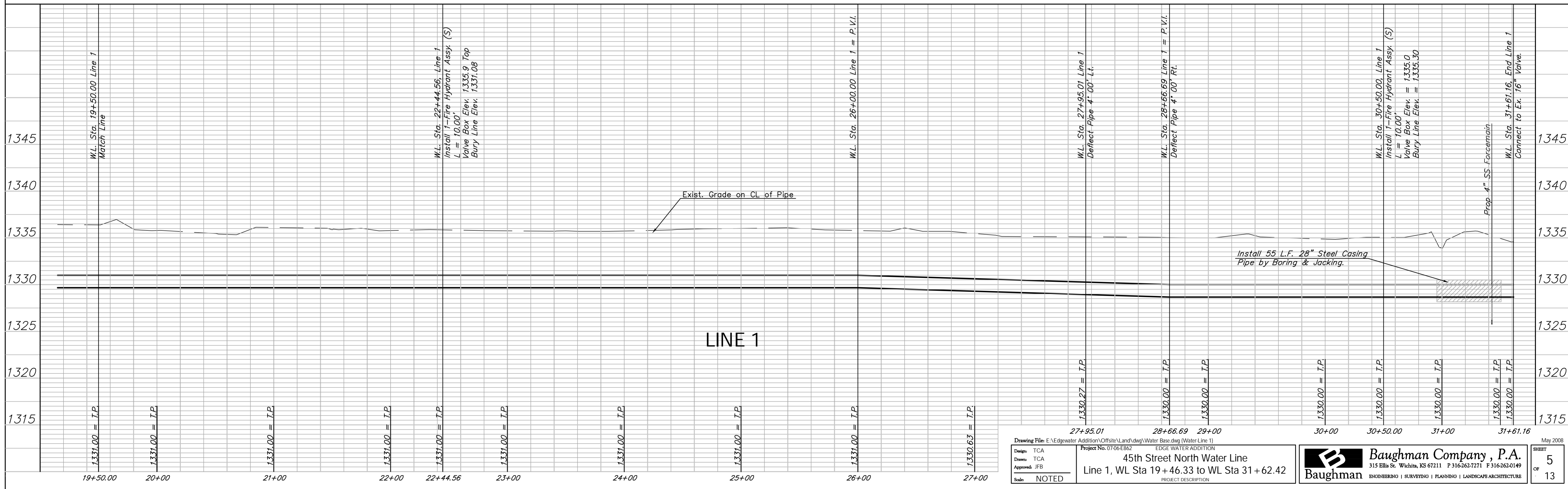
Install 294.56 L.F. 16" Pipe

Install 805.44 L.F. 16" Pipe

W.L. Sta. 19+50.00 Line 1 = B.L. 1 Sta. 20+04.99, 32.50' Lt. Match Line

B.L. 1 Sta. 32+27.86 = B.L. 3 Sta. 249+55.05, Cont. Point # 3 (INDCOR)

B.L. 1 Sta. 32+10.27, 53.08' Rt. Cont. Point # 5103



Drawing File: E:\Edgewater Addition\Offsite\Land\dwg\Water Base.dwg (Water Line 1) Project No. 0706E862 PROJECT DESCRIPTION 45th Street North Water Line Line 1, WL Sta 19+46.33 to WL Sta 31+62.42		May 2008 SHEET 5 OF 13
Design: TCA Drawn: TCA Approved: JFB Scale: NOTED	Baughman Company, P.A. 315 Ellis St., Wichita, KS 67211 P 316-262-7171 F 316-262-0149 Baughman ENGINEERING   SURVEYING   PLANNING   LANDSCAPE ARCHITECTURE	