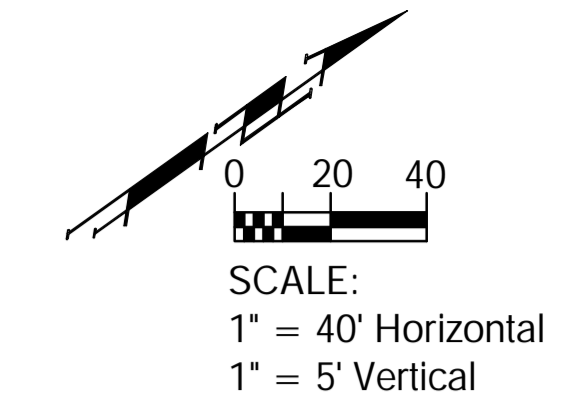


# Benchmarks

BM #1: Hoover and 45th St. N - COW  
 Benchmark at NE corner of Intersection, 10.20' SSE of PP, 58.80' ESE of PP on NW corner, 85.50' NE of gas line marker, 59.00' N of gas line marker, 28.50' E of Centerline, 14.50' N of Centerline.  
 Elev. = 1335.29 (NGVD 29)

BM #2: Small RR spike in 3rd PP W of Hoover St. on the N side of 45th St. N.  
 Elev. = 1337.68



W.L. Sta. 0+00.00, Begin Line 1a =  
 B.L. 1 Sta. 10+03.91, 320.34' Rt.  
 Install 1-8" X 8" CIMJ Cross  
 Install 3-8" Anch. Valve Assy. (E, W, & S)  
 Connect Ex. 8" Water Lines (E, W, & S)

W.L. Sta. 0+05.00, Line 1a =  
 B.L. 1 Sta. 10+06.85, 316.30' Rt.  
 Install 1" Tap for Air Release.  
 Install 1-Air Release Assy. (SW)  
 See Detail, This Sheet.  
 Top Elev. = 1337.20

W.L. Sta. 1+74.28 Line 1a =  
 B.L. 1 Sta. 11+00.46, 175.61' Rt.  
 Deflect Pipe 4' 00' Lt.

W.L. Sta. 1+94.28 Line 1a =  
 B.L. 1 Sta. 11+08.95, 157.34' Rt.  
 Deflect Pipe 4' 00' Lt.

W.L. Sta. 2+34.28 Line 1a =  
 B.L. 1 Sta. 11+20.95, 119.32' Rt.  
 Deflect Pipe 4' 00' Lt.

W.L. Sta. 2+54.28 Line 1a =  
 B.L. 1 Sta. 11+25.10, 99.76' Rt.  
 Deflect Pipe 4' 00' Lt.

W.L. Sta. 2+74.28 Line 1a =  
 B.L. 1 Sta. 11+27.89, 79.95' Rt.  
 Deflect Pipe 4' 00' Lt.

CAUTION  
 Existing U/G AT&T O/H Elec Crossings

DANGER  
 Existing Southern Star Central Gas Crossing

CAUTION  
 Proposed 18" SWS Crossing

DANGER  
 Existing Wichita Gas Producers Pipeline Crossing

45TH STREET NORTH

W.L. Sta. 10+24.48 Line 1 =  
 W.L. Sta. 3+66.78, Line 1a =  
 B.L. 1 Sta. 11+29.28, 32.50' Lt.  
 Connect to Prop. Valve

W.L. Sta. 3+46.78 Line 1a =  
 B.L. 1 Sta. 11+29.28, 7.50' Rt.  
 Install 1-22.5' CIMJ Bend (Rolled)

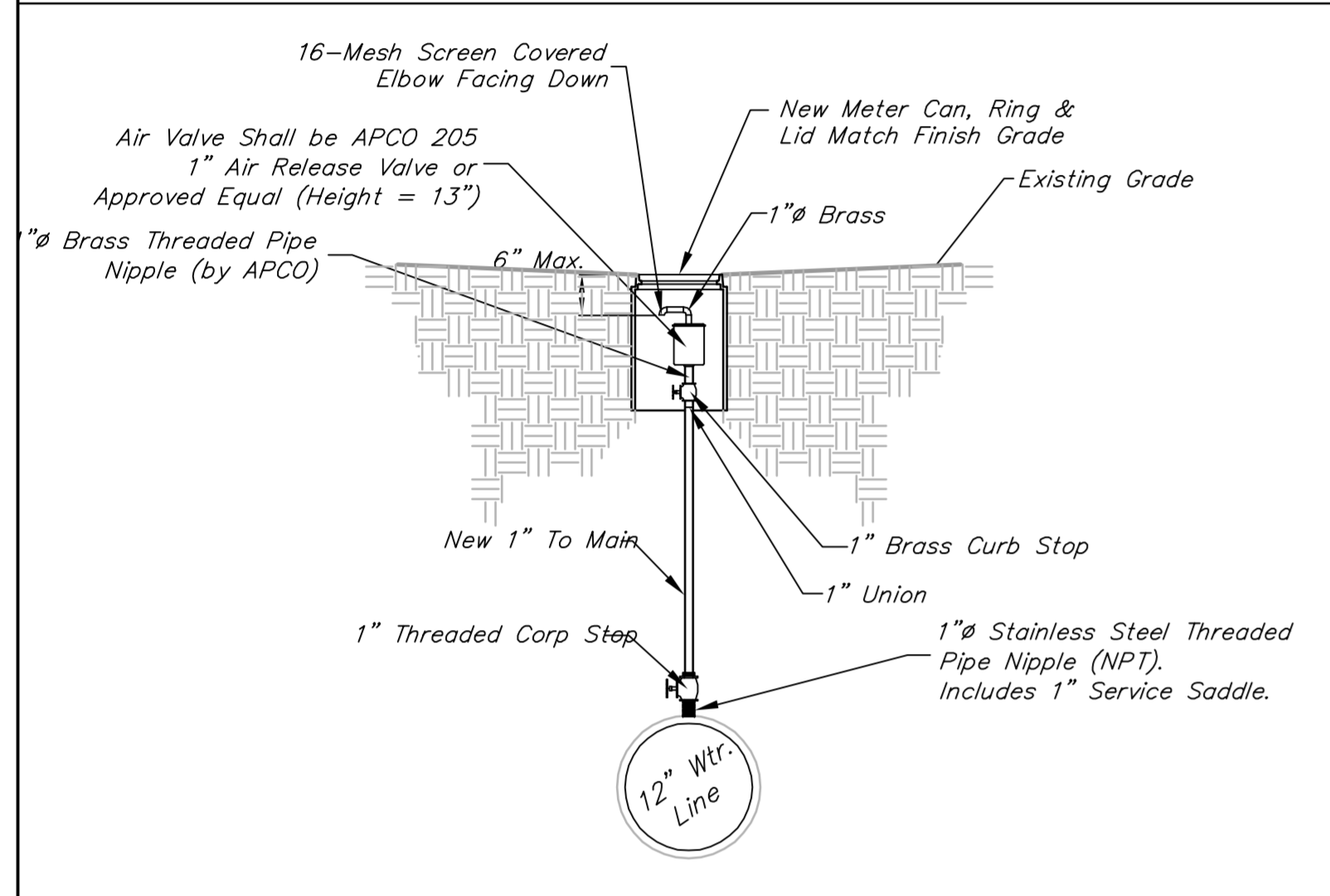
W.L. Sta. 3+29.75 Line 1a =  
 B.L. 1 Sta. 11+29.28, 24.53' Rt.  
 Install 1-22.5' CIMJ Bend (Rolled)

W.L. Sta. 3+10.34 Line 1a =  
 B.L. 1 Sta. 11+29.28, 43.94' Rt.  
 Install 1-22.5' CIMJ Bend (Rolled)

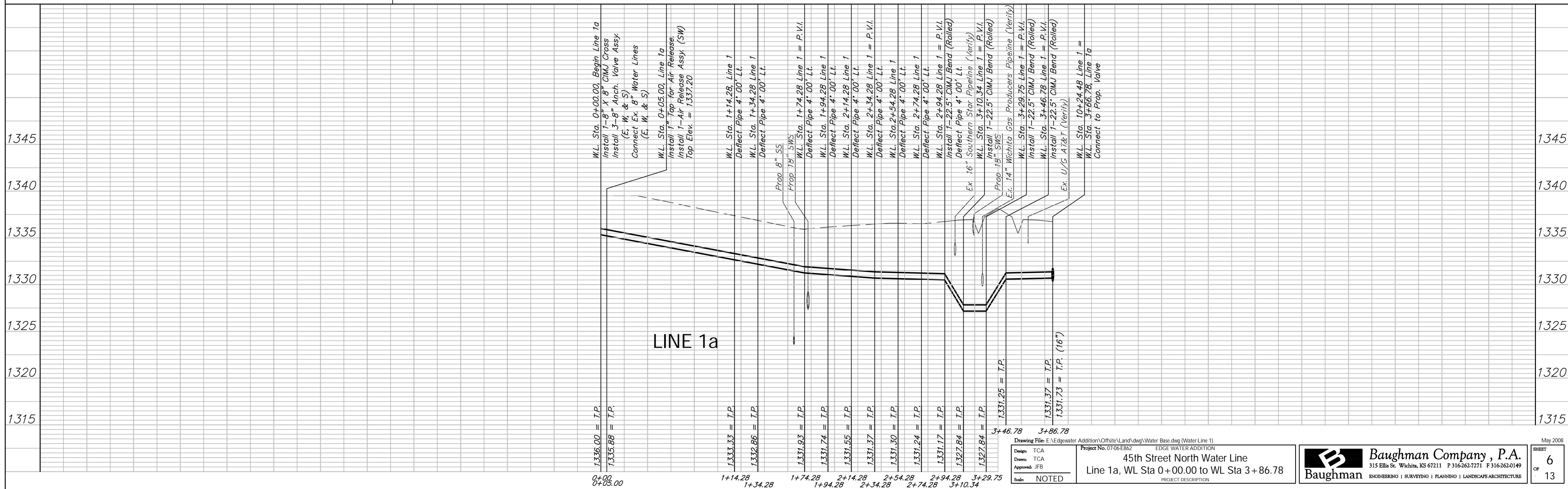
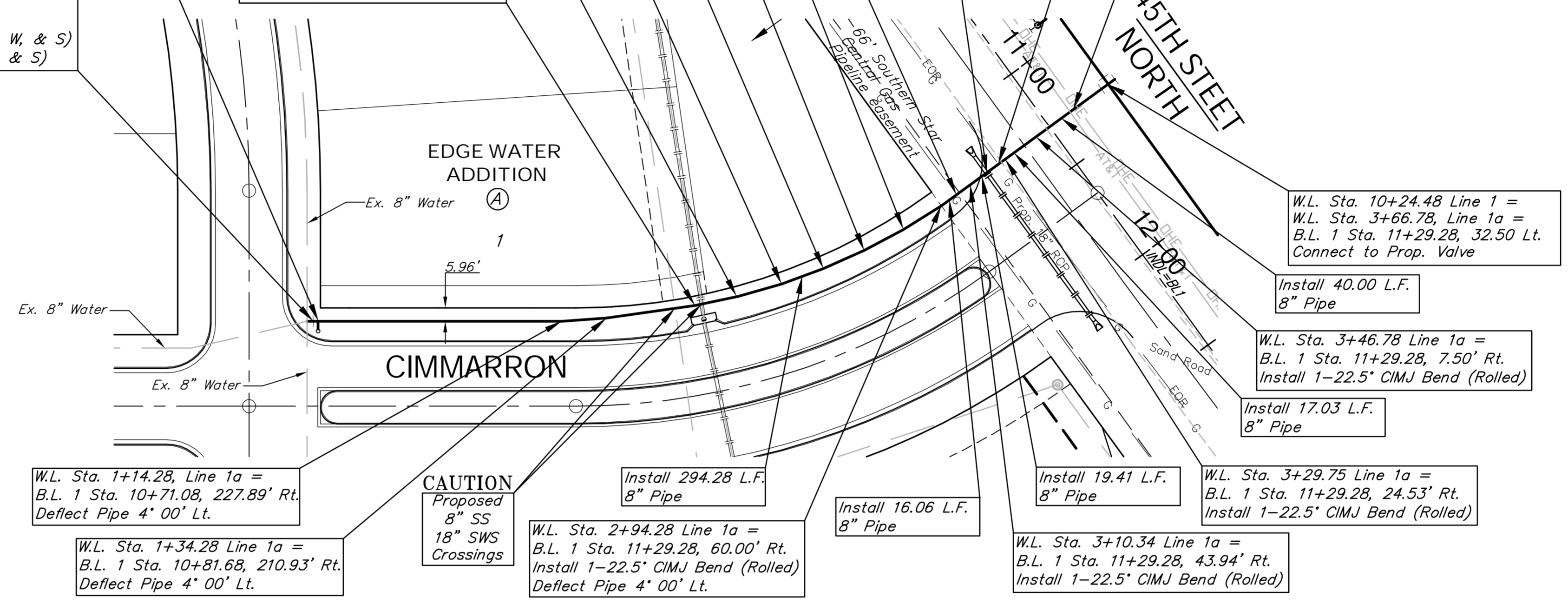
W.L. Sta. 2+94.28 Line 1a =  
 B.L. 1 Sta. 11+29.28, 60.00' Rt.  
 Install 1-22.5' CIMJ Bend (Rolled)

W.L. Sta. 1+34.28 Line 1a =  
 B.L. 1 Sta. 10+81.68, 210.93' Rt.  
 Deflect Pipe 4' 00' Lt.

W.L. Sta. 1+14.28, Line 1a =  
 B.L. 1 Sta. 10+71.08, 227.89' Rt.  
 Deflect Pipe 4' 00' Lt.



AIR RELEASE DETAIL



Drawing File: E:\EdgeWater Addition\Offsite\Land\dwg\Water Base.dwg (Water-Line 1)  
 Project No. 0706E862  
 EDGE WATER ADDITION  
 45th Street North Water Line  
 Line 1a, WL Sta 0+00.00 to WL Sta 3+86.78  
 Scale: NOTED

**Baughman Company, P.A.**  
 315 Ellis St., Wichita, KS 67211 P 316-262-7171 F 316-262-0149  
 ENGINEERING | SURVEYING | PLANNING | LANDSCAPE ARCHITECTURE  
 SHEET 6 OF 13  
 May 2008