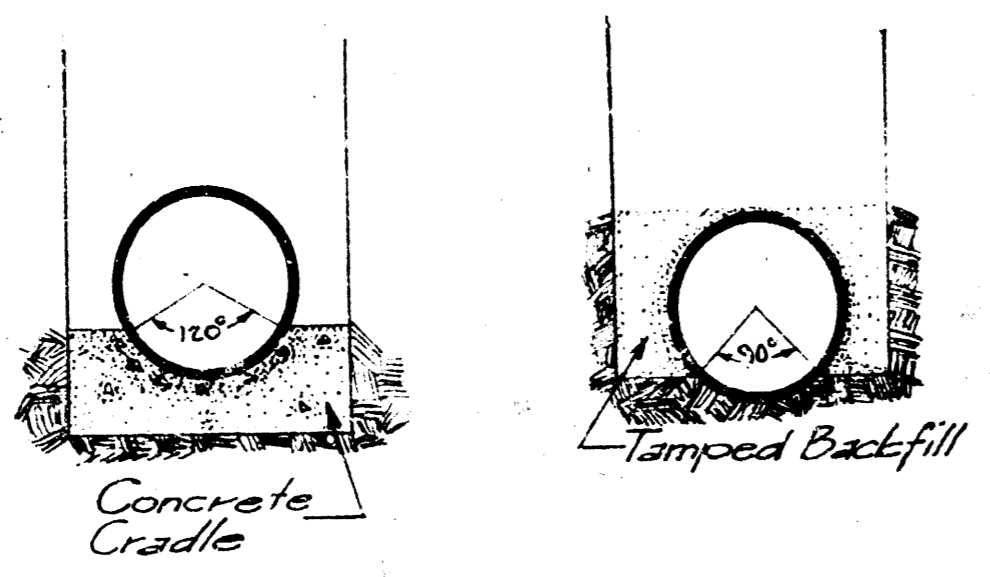
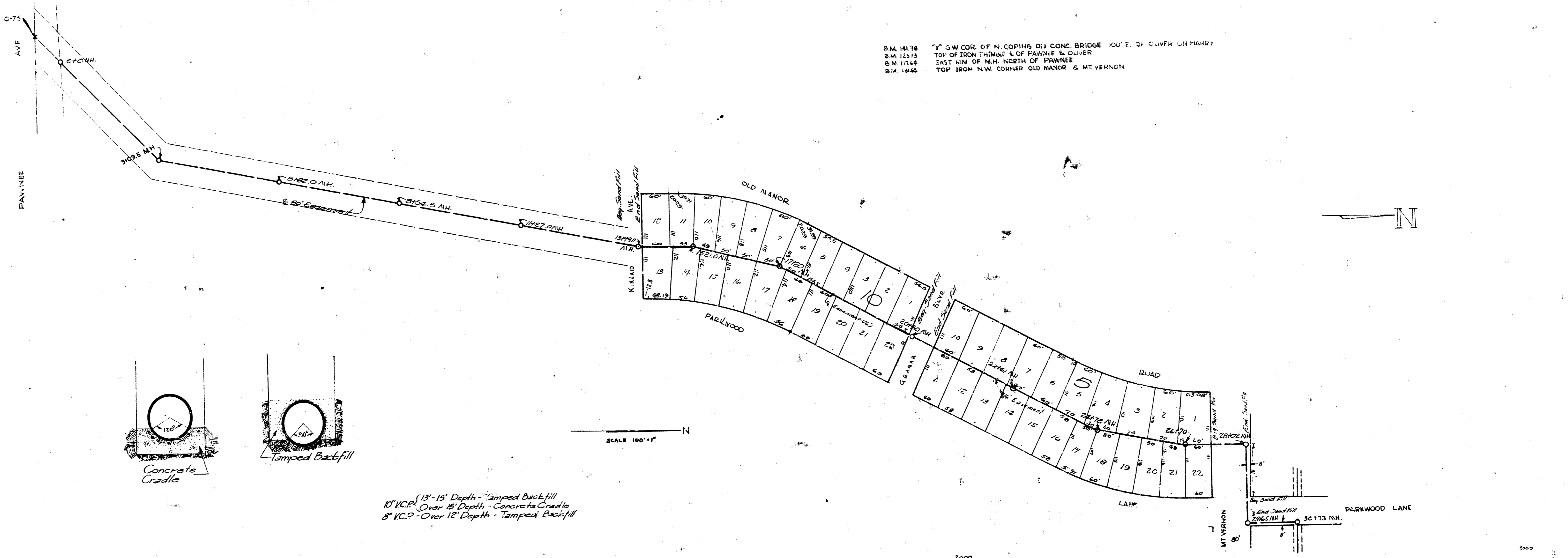
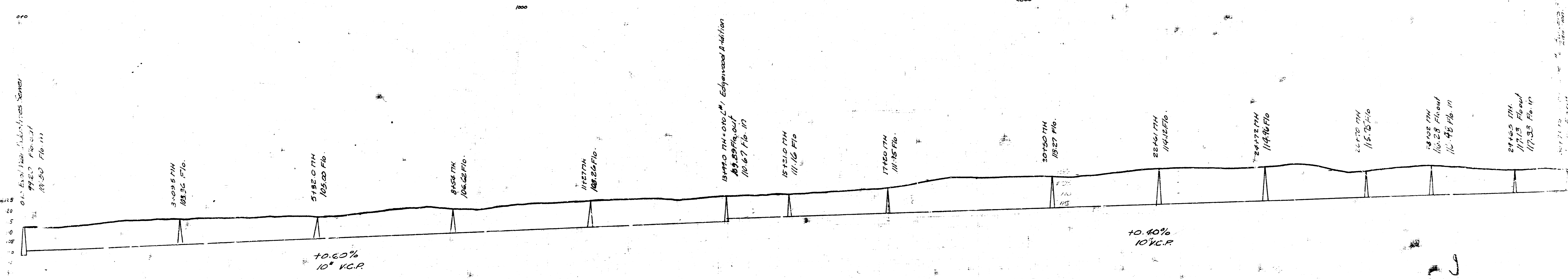


STA. 0+75 IS THE INTERSECTION OF THE PROPOSED SEWER LINE WITH THE MAINLINE WHICH PT. IS 1022.7 S. 74 & OLIVER

B.M. 14138 4" SW COR. OF N. COPING, OLD CONC. BRIDGE 100' E. OF OLIVER ON HARRY  
 B.M. 12313 TOP OF IRON THIMBLE & OF PAWNEE & OLIVER  
 B.M. 11748 EAST LIM OF M.H. NORTH OF PAWNEE  
 B.M. 11846 TOP IRON N.W. CORNER OLD MANOR & MT. VERNON



1' V.C.P. 13'-15' Depth - Tamped Backfill  
 8" V.C.P. Over 15' Depth - Concrete Cradle  
 8" V.C.P. Over 12' Depth - Tamped Backfill



SUBMAIN 1, WAR INDUSTRIES SEWER  
 City of Wichita, Kansas  
 L.E. White City Engineer  
 Date: 2-3-50 C-25-33

SHEET (1)

