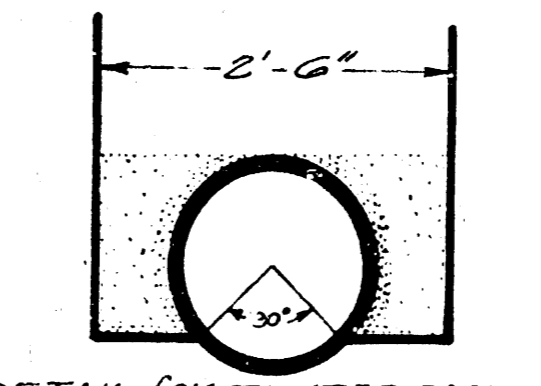
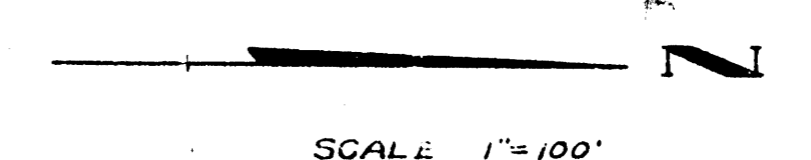


B.M. 131.65 Top Iron N.W. Corner Old Manor and Mt. Vernon Road.
 B.M. 142.38 R.R. Spike Top Hedge Stump 30' east of east line of Elpyco.
 B.M. 141.19 Iron S.E. corner Edgemoor and Finston.
 B.M. 145.48 R.R. Spike east Old Manor.
 B.M. 142.31 Top Iron N.E. corner Mt. Vernon & Elpyco.

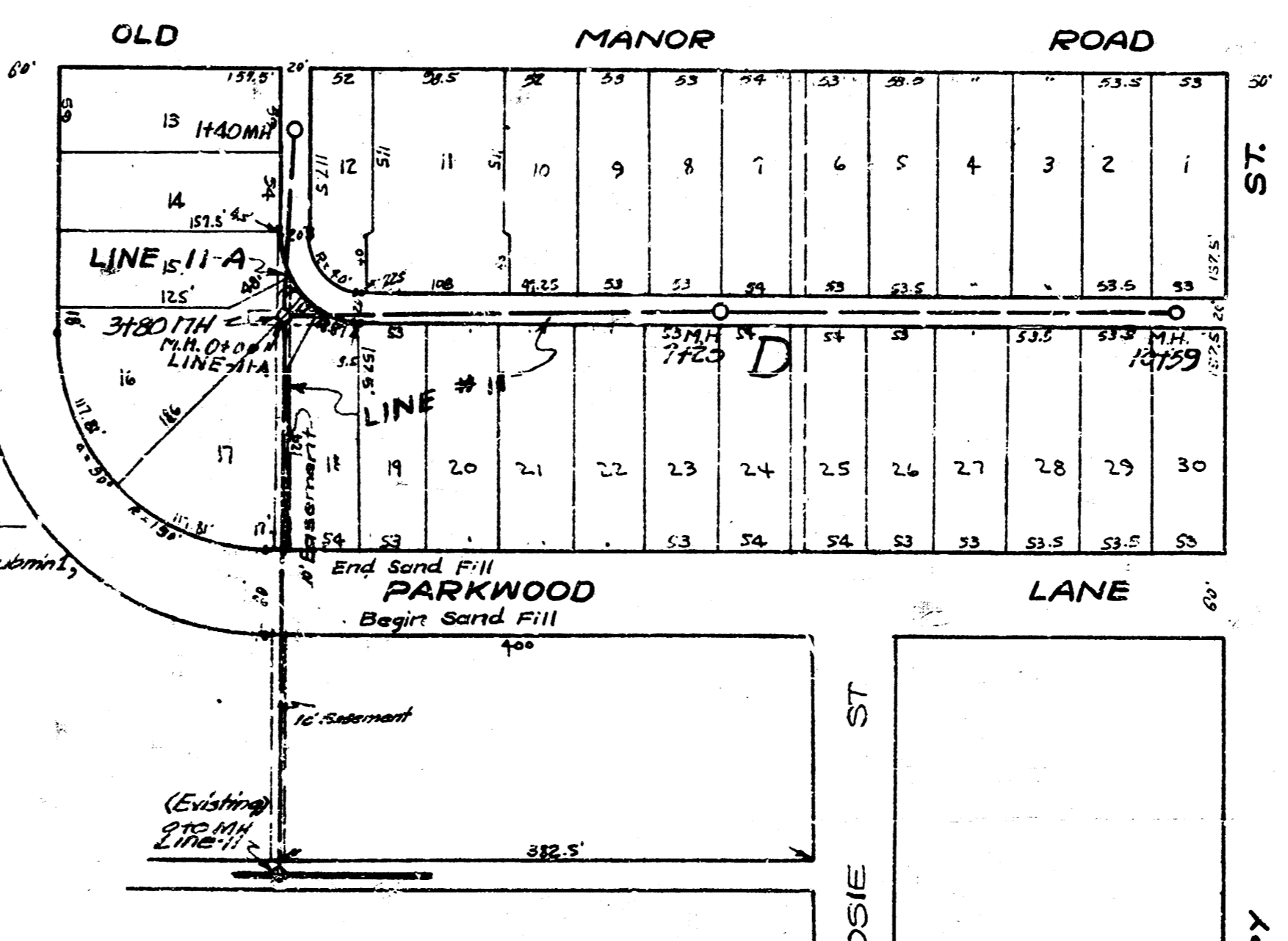
CONTRACT LIMITS
 LAT. 2 - Line 10, 11, & 11A
 LAT. 3 - Line 2 (Sta. 0+0 to Sta. 2+75) Line 2A
 Line 7 & 8
 Line 9 (Sta. 0+0 to Sta. 2+75) Line 9A
 LAT. 4 - Line 2 (Sta. 2+75 to Sta. 13+45)
 Line 3, 4, 5, 6, 6A
 Line 9 (Sta. 2+75 to Sta. 13+45) Line 9A

SCALE 1"=100'



DETAIL FOR TAMPED BACKFILL
 Note: 1/2 inches over 18" depth to be tamped backfill.

LATERALS - 2-3-4, DISTRICT I, WAR INDUSTRIES SEWER
 WICHITA, KANSAS



LAT. 4, DIST. 1, W.I.S., LAT. 3, DIST. 1, W.I.S.
 LAT. 2, DIST. 1, W.I.S.
 CITY OF WICHITA, KANSAS
 L. E. White City Engineer
 Date 3-3-00. C27-52-53-56

Start Cap Line 2 at Sta. 0+00
 Refer to Contract of Lat. 3
 Submain, War Industries Sewer

Existing 10" VCP @ 40' 0" 2"

End Cap Line 2 at Sta. 2+75
 Refer to Contract of Lat. 4, Submain,
 War Industries Sewer.

File
 March 15-1950

