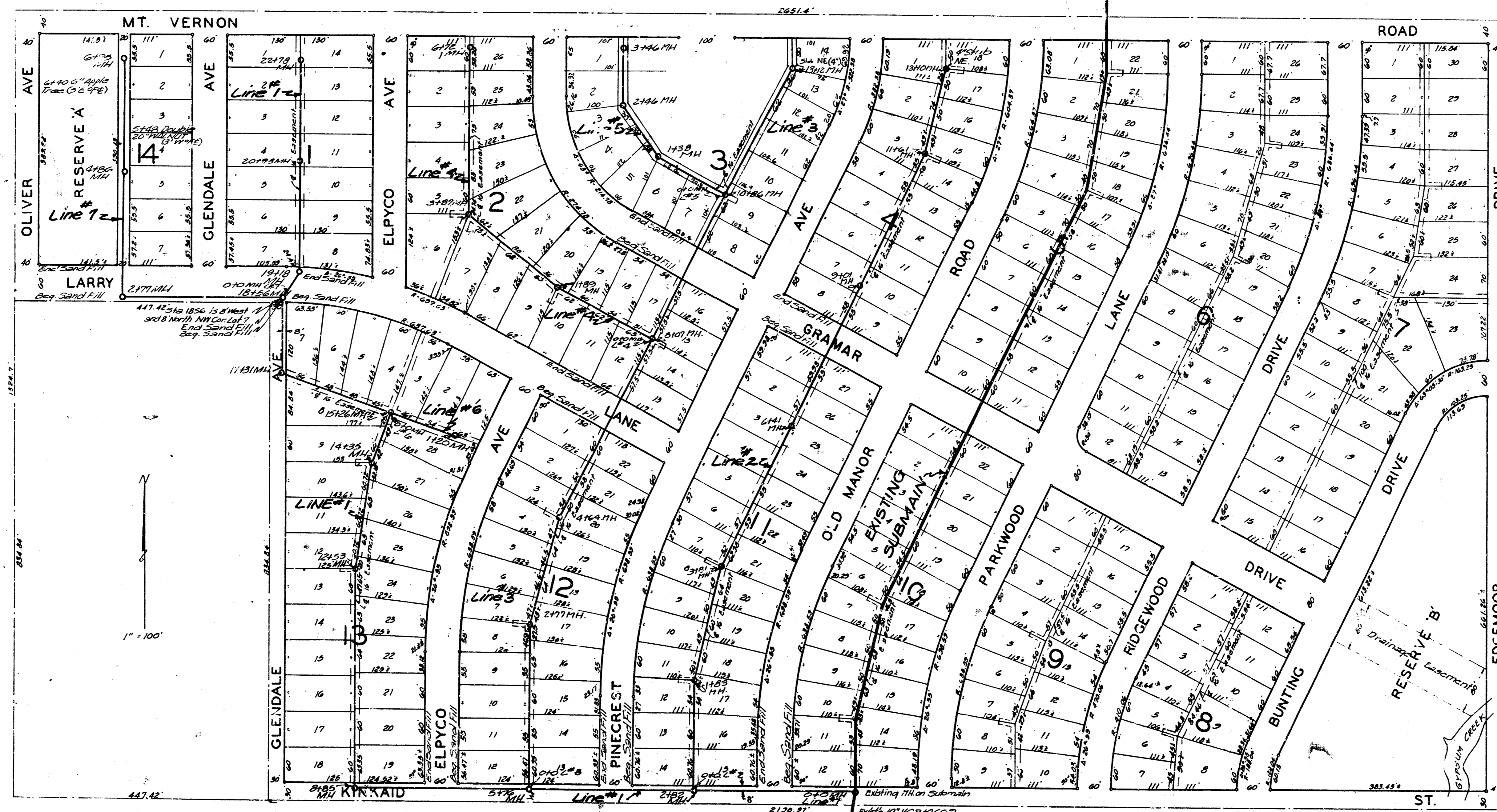
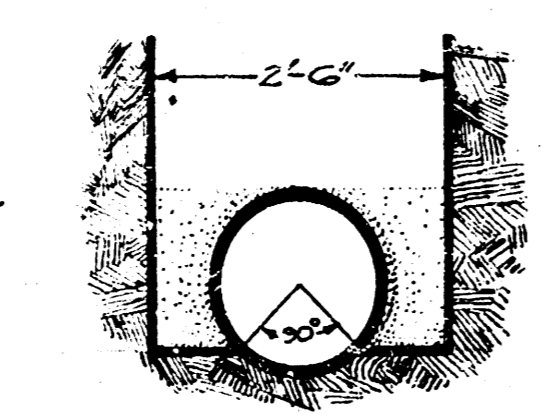
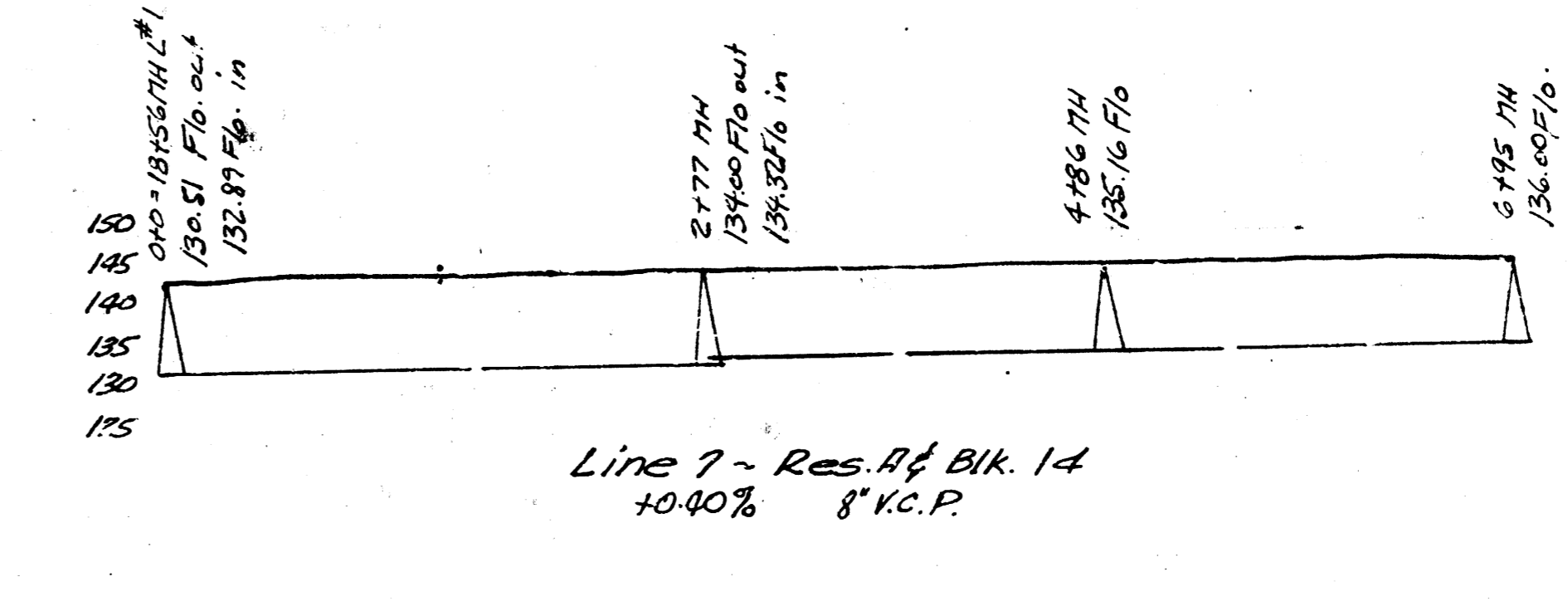
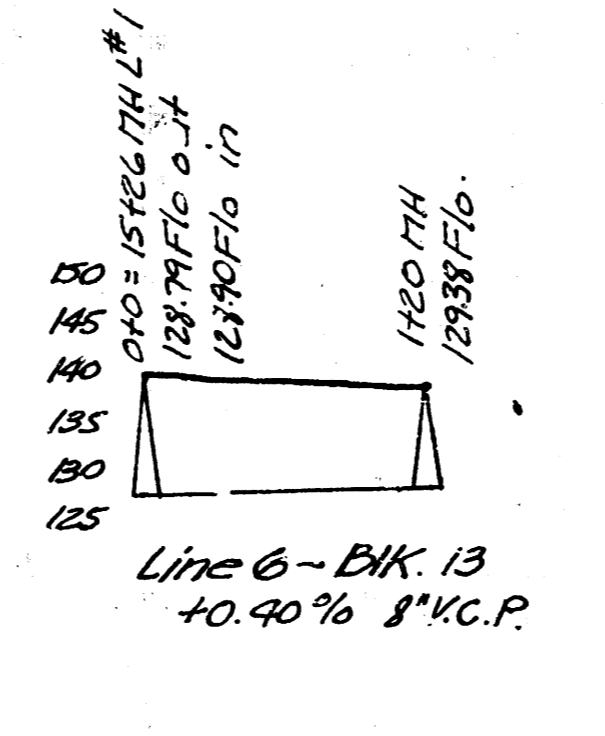
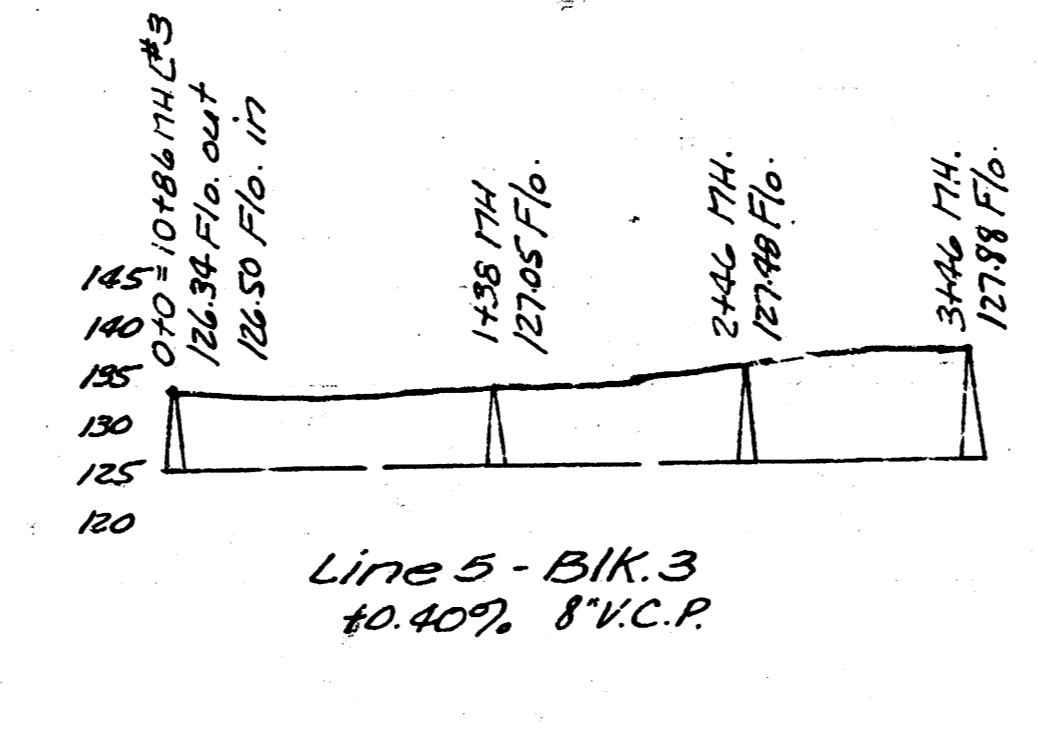
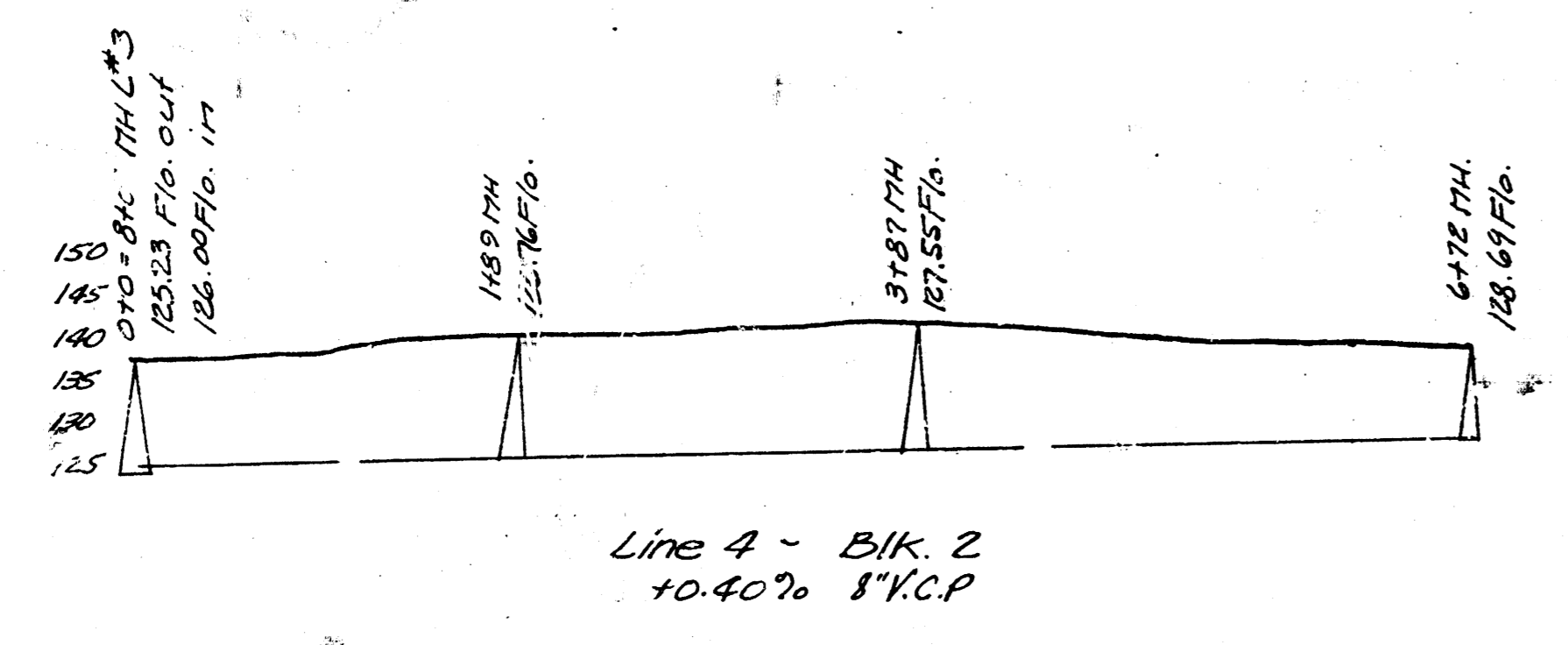
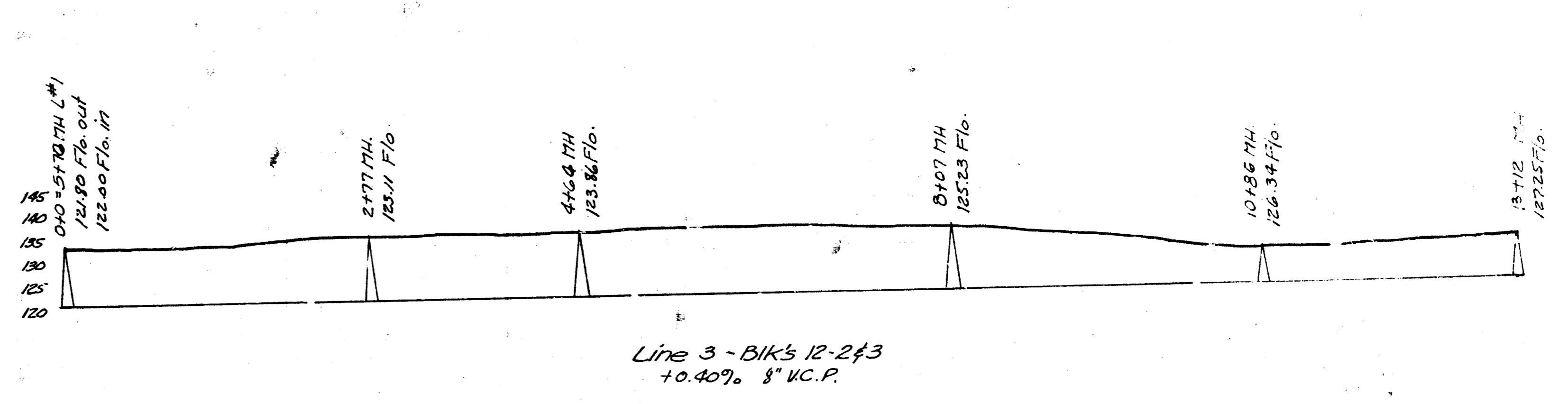
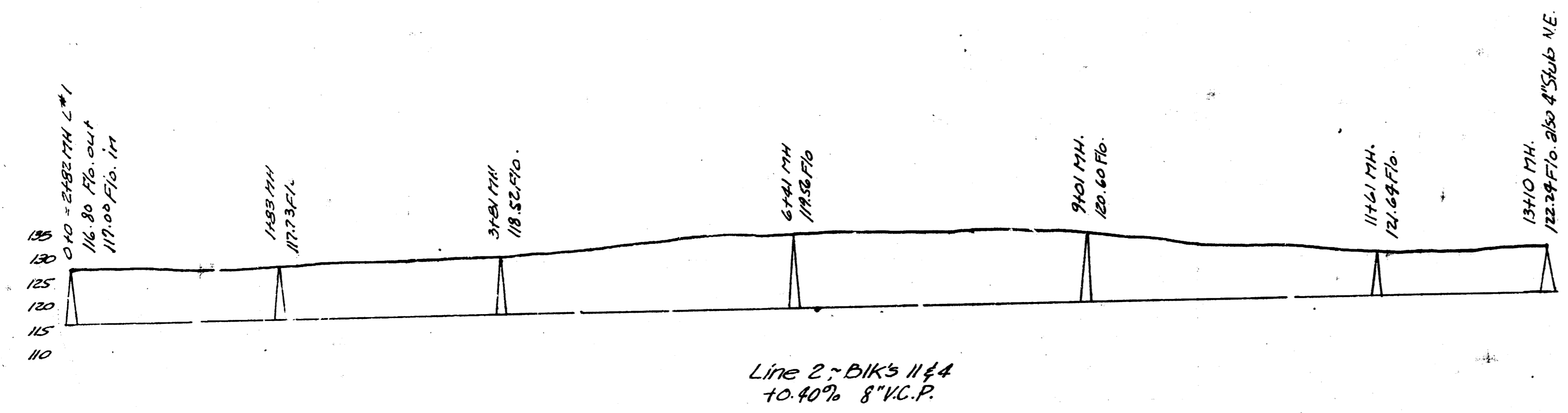
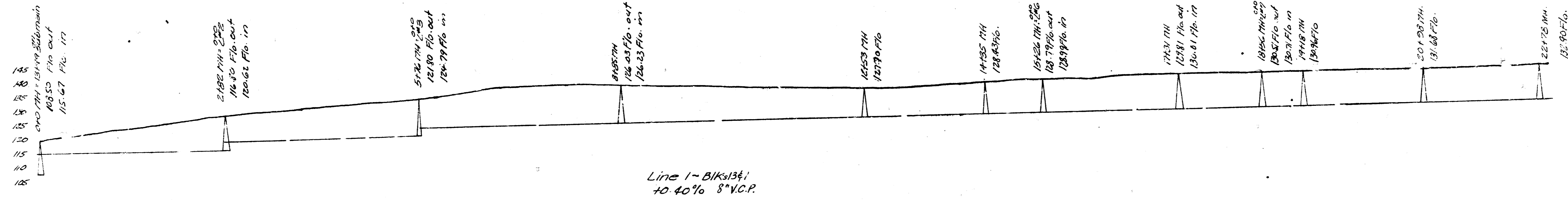


LATERAL 5, DISTRICT I, WAR INDUSTRIES SEWER
WICHITA, KANSAS
1950





DETAIL OF TAMPED BACKFILL
 Note -
 Ditches over 13' in depth, to be
 tamped backfill

LAT. 8, SUBMAIN 1, WAR INDUSTRIES SEWER
 CITY OF WICHITA KANSAS
 L. K. WHITE - CITY ENGINEER
 DATE: 4-6-51, PROJ. NO. C21-3

LAT. 5, DIST. 1, War Industries Sewer
 PROFILE'S FOR EDGEWOOD ADDITION
 City of Wichita, Kansas
 L. K. White - City Engineer
 Date: 3-2-50 C 20-4

Hand-drawn signature and date: 11-10-50